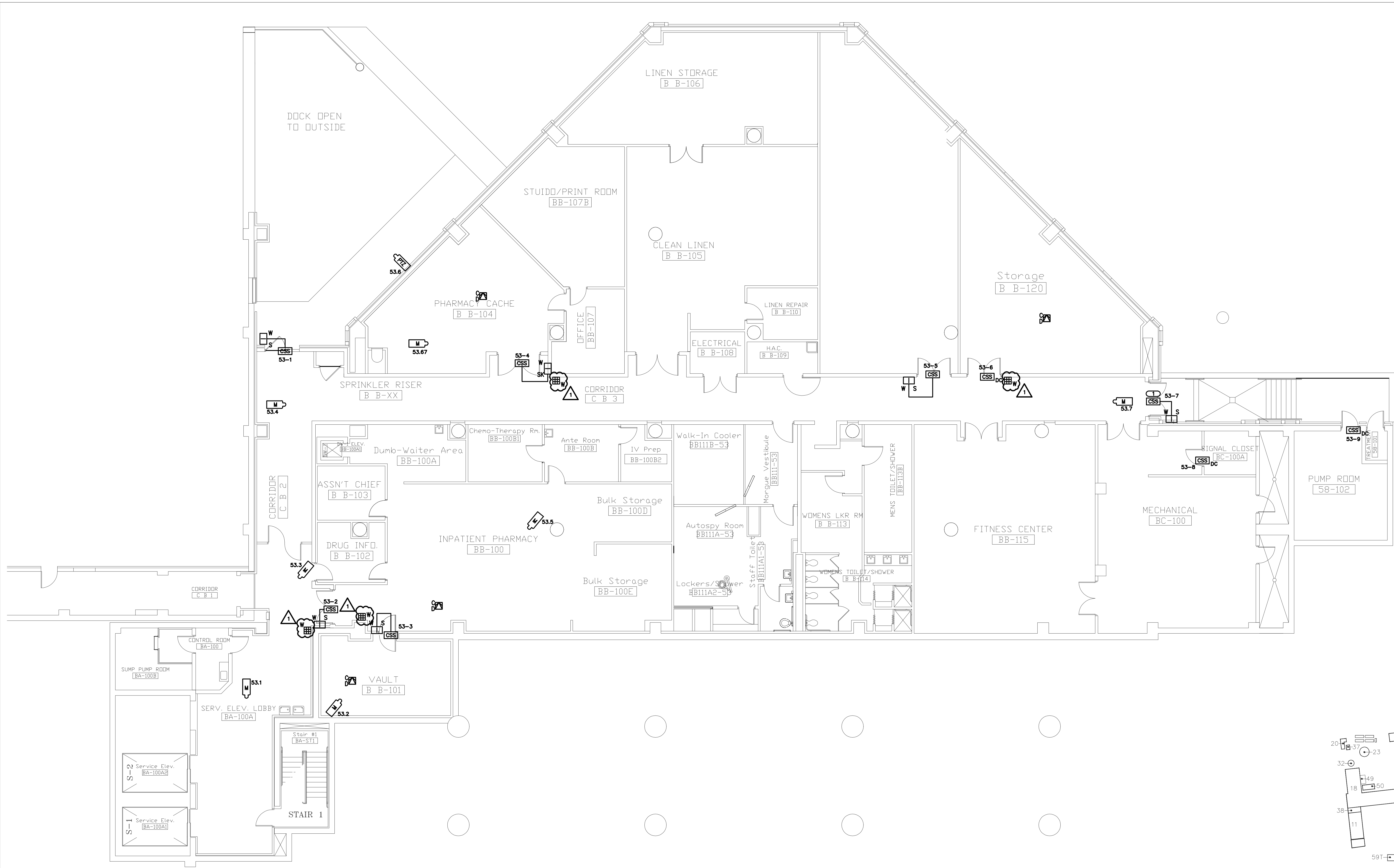


one eighth inch = one foot  
0 4 8 12 16  
one quarter inch = one foot  
0 4 8  
three eighths inch = one foot  
0 4 8  
one half inch = one foot  
0 4 8  
one half inch = one foot  
0 4 8  
three quarters inch = one foot  
0 4 8  
one inch = one foot  
0 6 12  
one and one half inches = one foot  
0 6 12  
two inches = one foot  
0 6 12  
three inches = one foot  
0 6 12  
four inches = one foot  
0 6 12  
five inches = one foot  
0 6 12  
six inches = one foot  
0 6 12  
seven inches = one foot  
0 6 12  
eight inches = one foot  
0 6 12  
nine inches = one foot  
0 6 12  
ten inches = one foot  
0 6 12  
eleven inches = one foot  
0 6 12  
twelve inches = one foot  
0 6 12



**BASEMENT**  
SCALE: 1/8" = 1'-0"  
N

