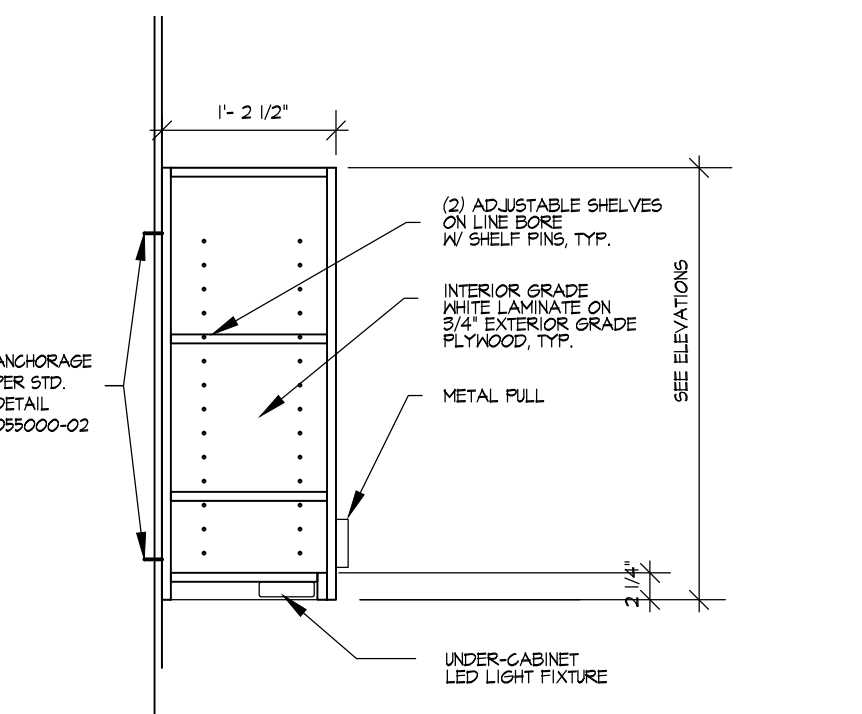
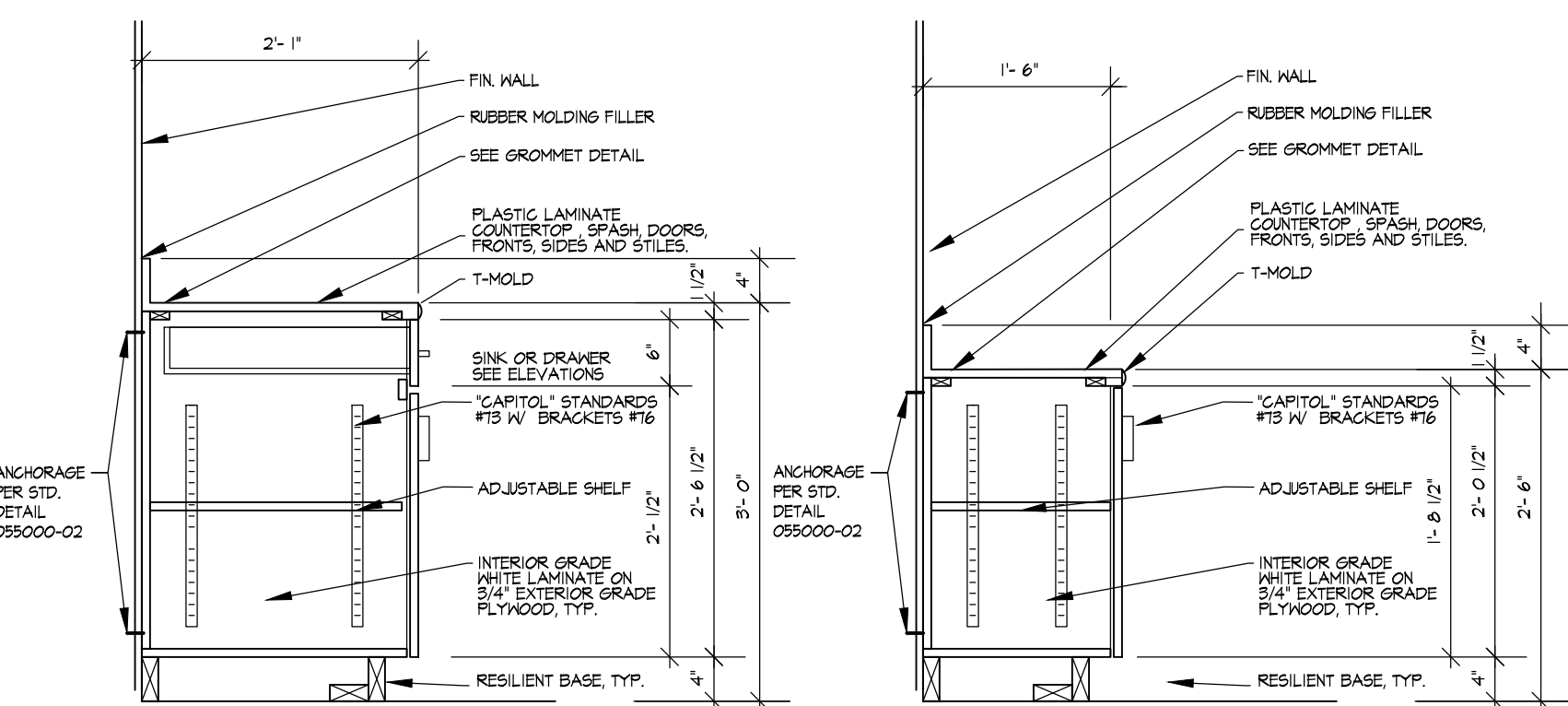


three inches = one foot  
one and one half inches = one foot  
one inch = one foot  
three quarters inch = one foot  
one half inch = one foot  
one quarter inch = one foot  
three eighths inch = one foot  
one eighth inch = one foot

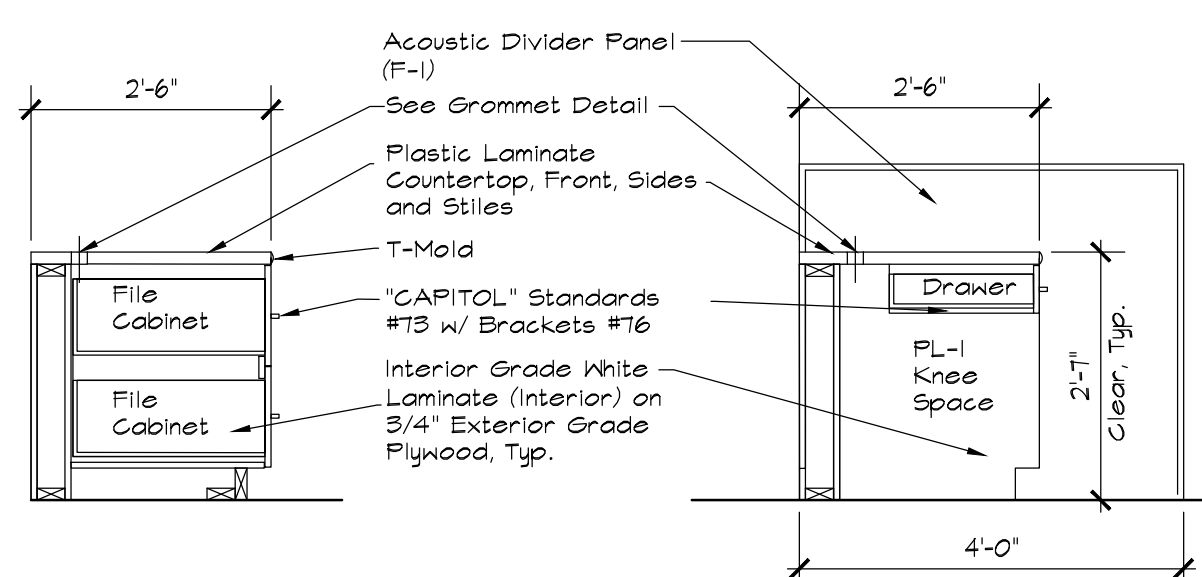


9 TYPICAL WALL CABINET  
SCALE: 3/4" = 1'-0"

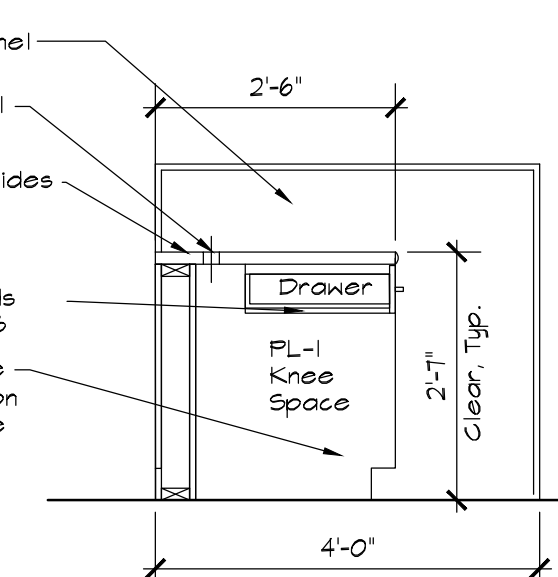


7 TYPICAL BASE CABINET  
SCALE: 3/4" = 1'-0"

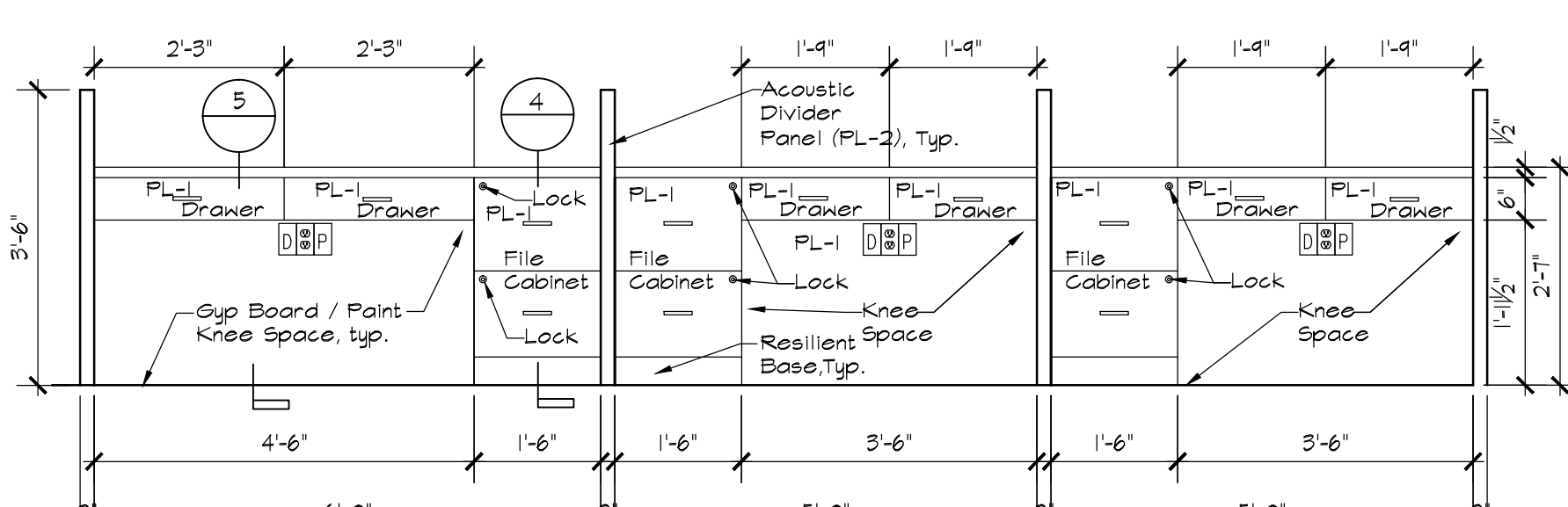
8 TYPICAL BASE CABINET  
SCALE: 3/4" = 1'-0"



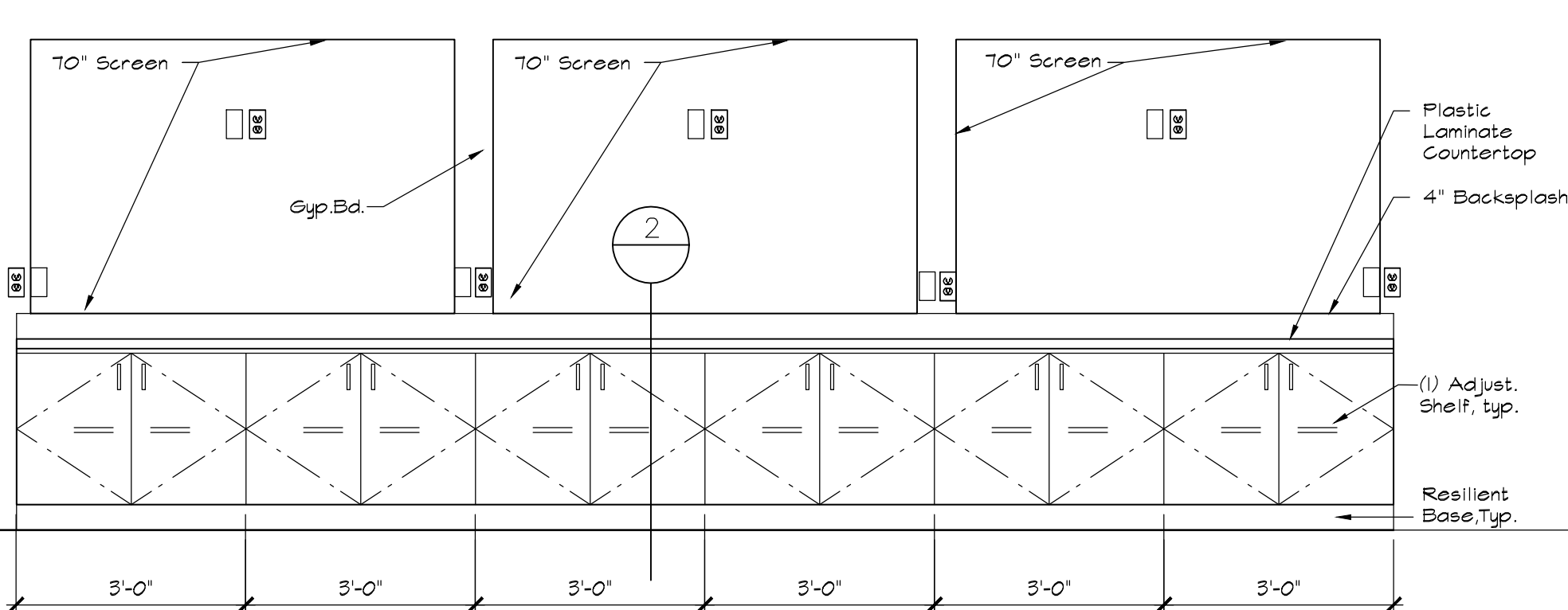
4 DETAIL A DESK SECTION  
SCALE: 1/2" = 1'-0"



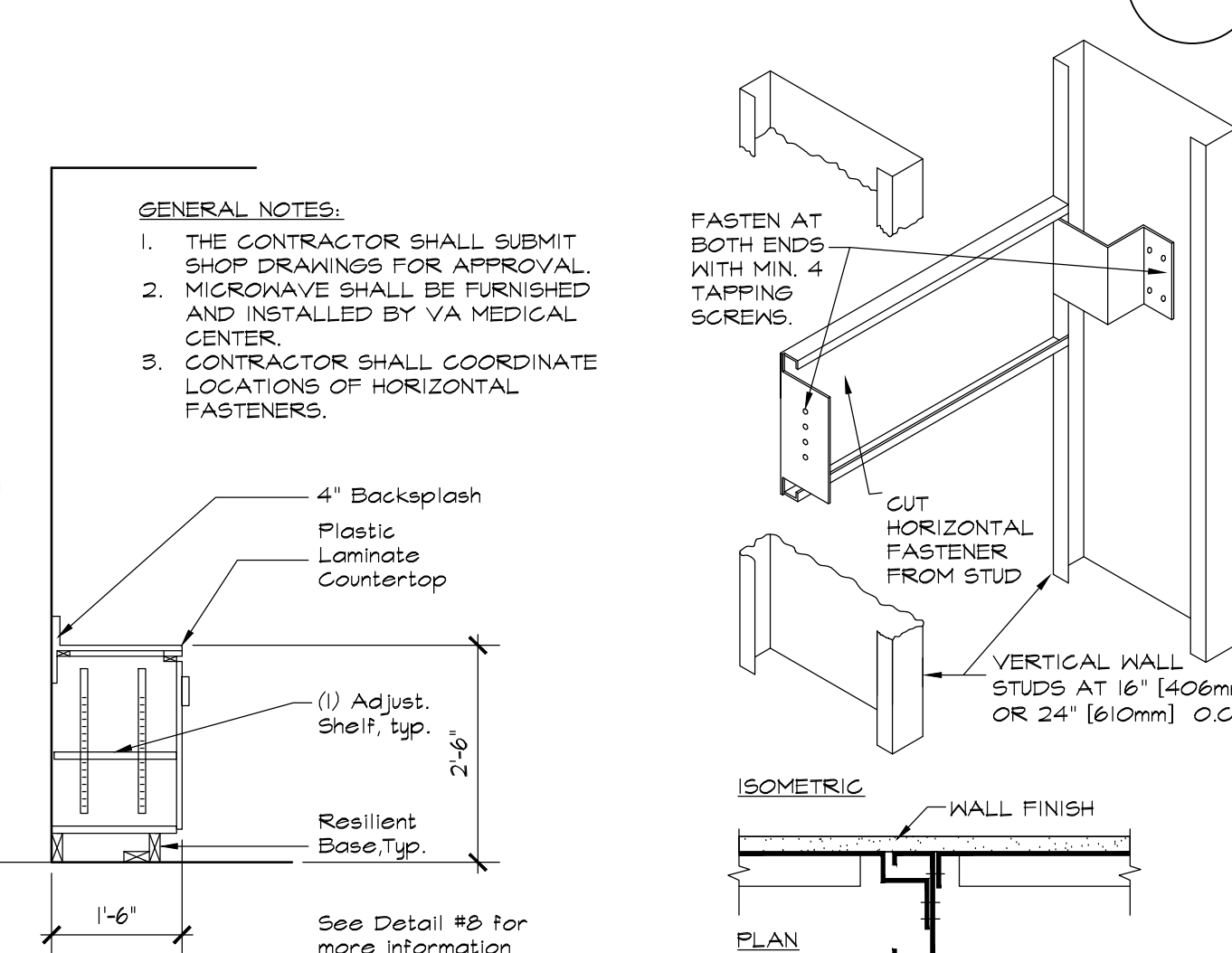
5 DETAIL B DESK SECTION  
SCALE: 1/2" = 1'-0"



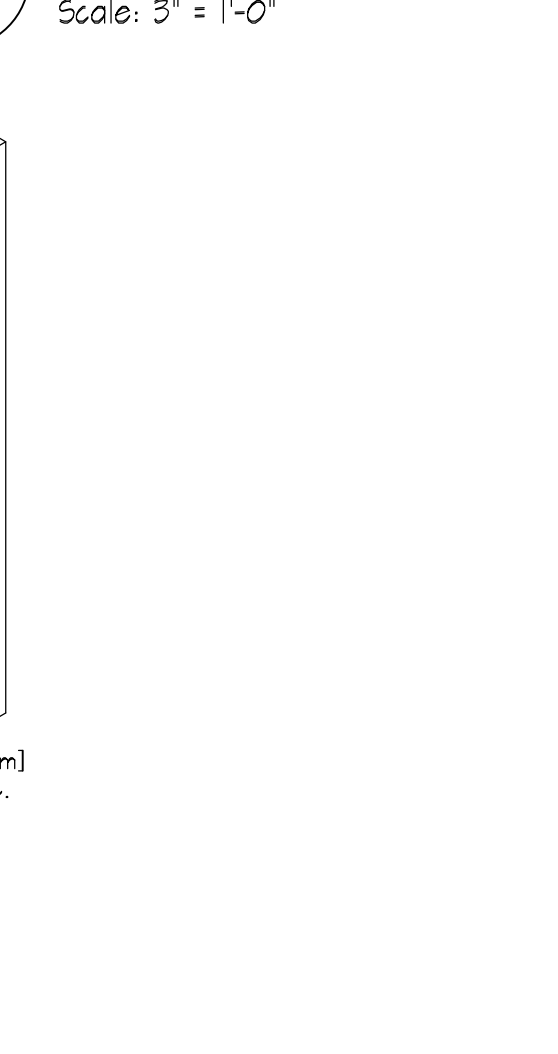
6 CASEWORK ELEVATION B-B  
SCALE: 1/2" = 1'-0"



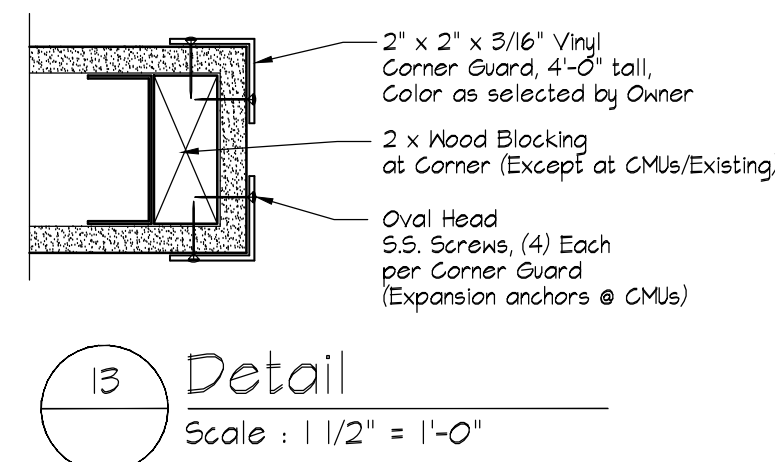
1 CASEWORK ELEVATION A-A  
SCALE: 1/2" = 1'-0"



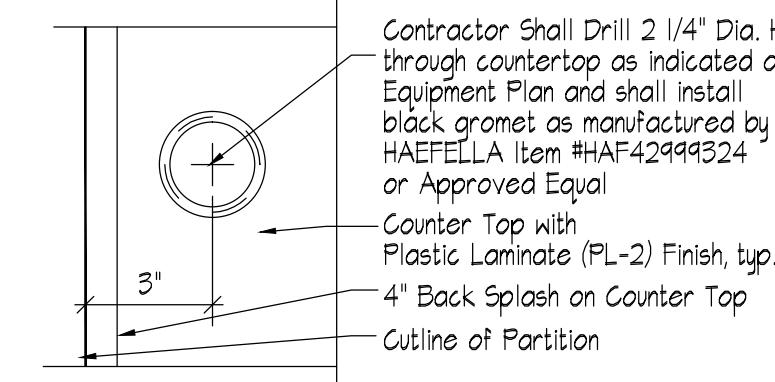
2 SECTION  
SCALE: 1/2" = 1'-0"



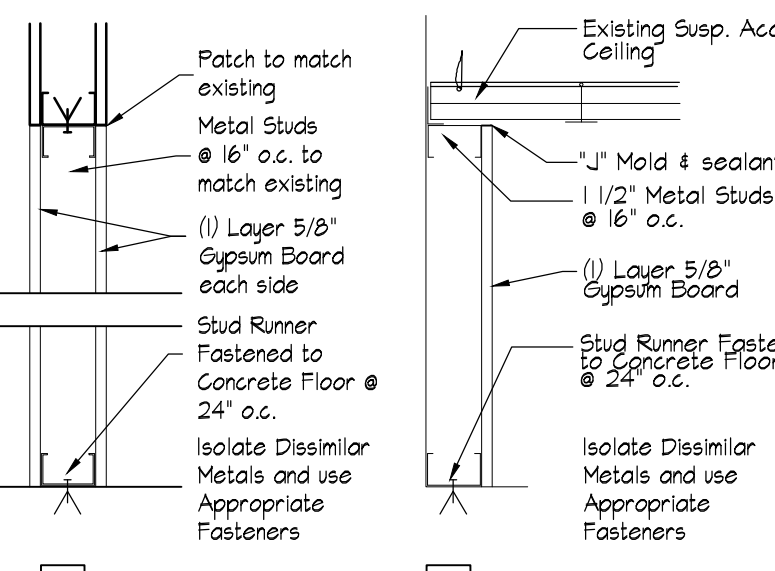
3 ANCHORAGE - CABINETS  
SCALE: 1/2" = 1'-0"



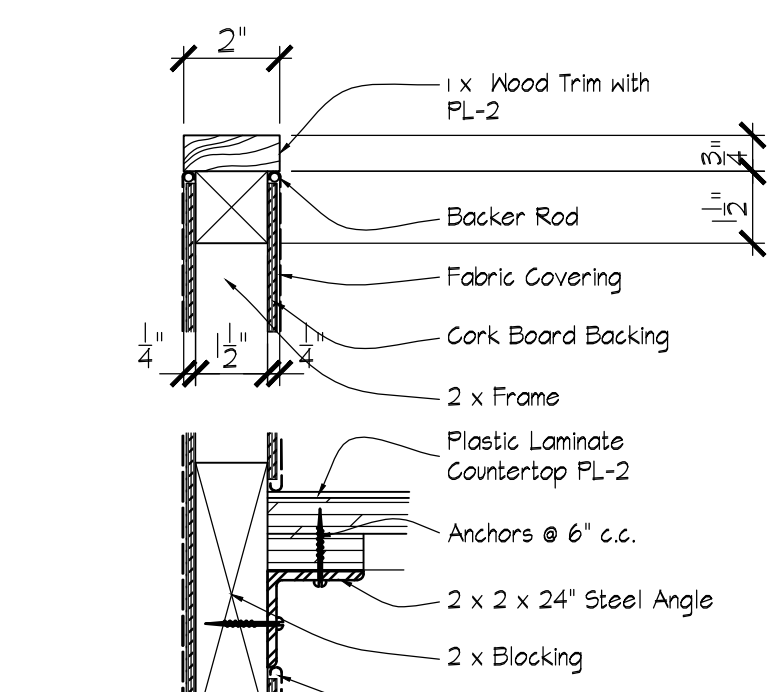
13 Detail  
Scale: 1 1/2" = 1'-0"



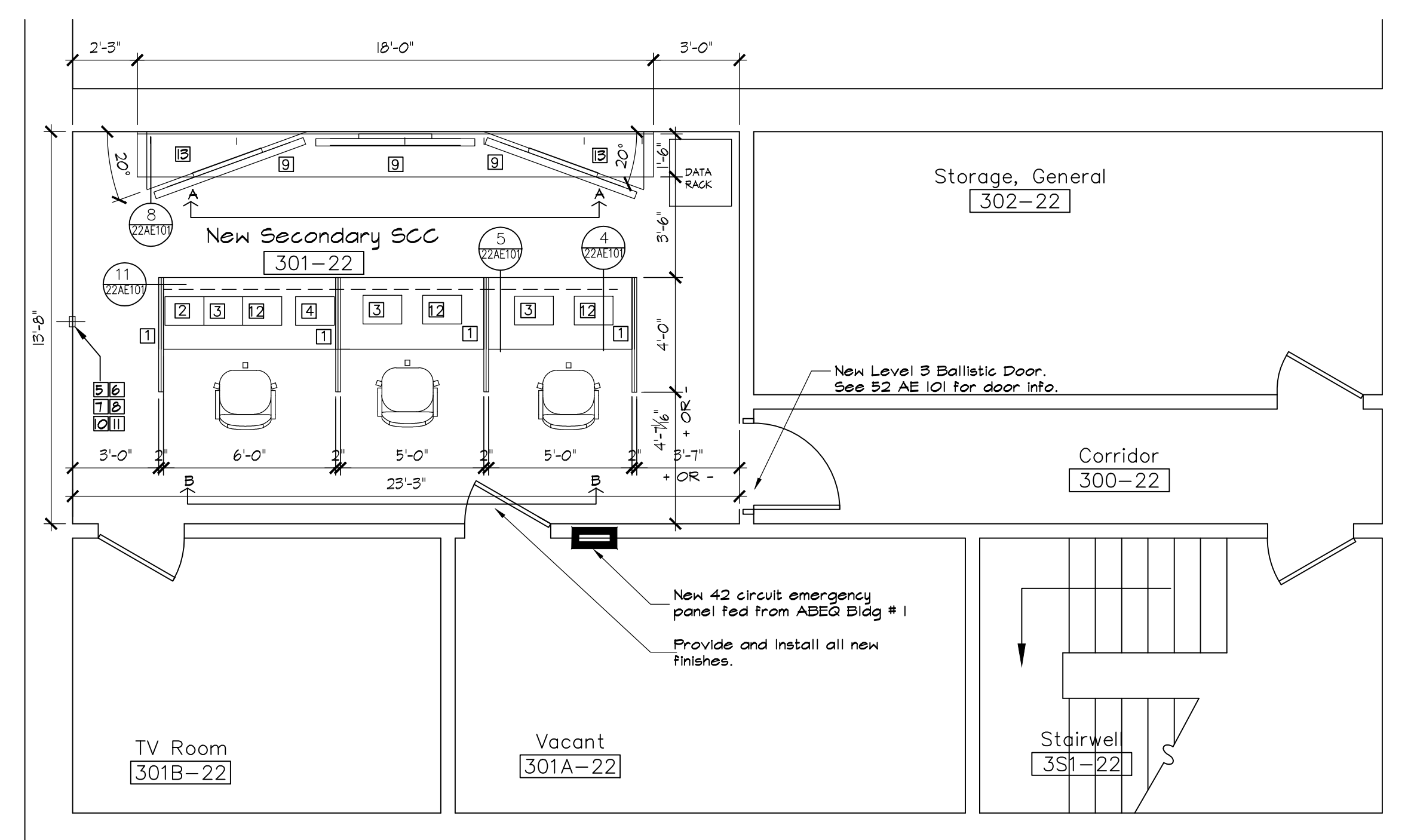
12 Grommet Detail  
Scale: 3" = 1'-0"



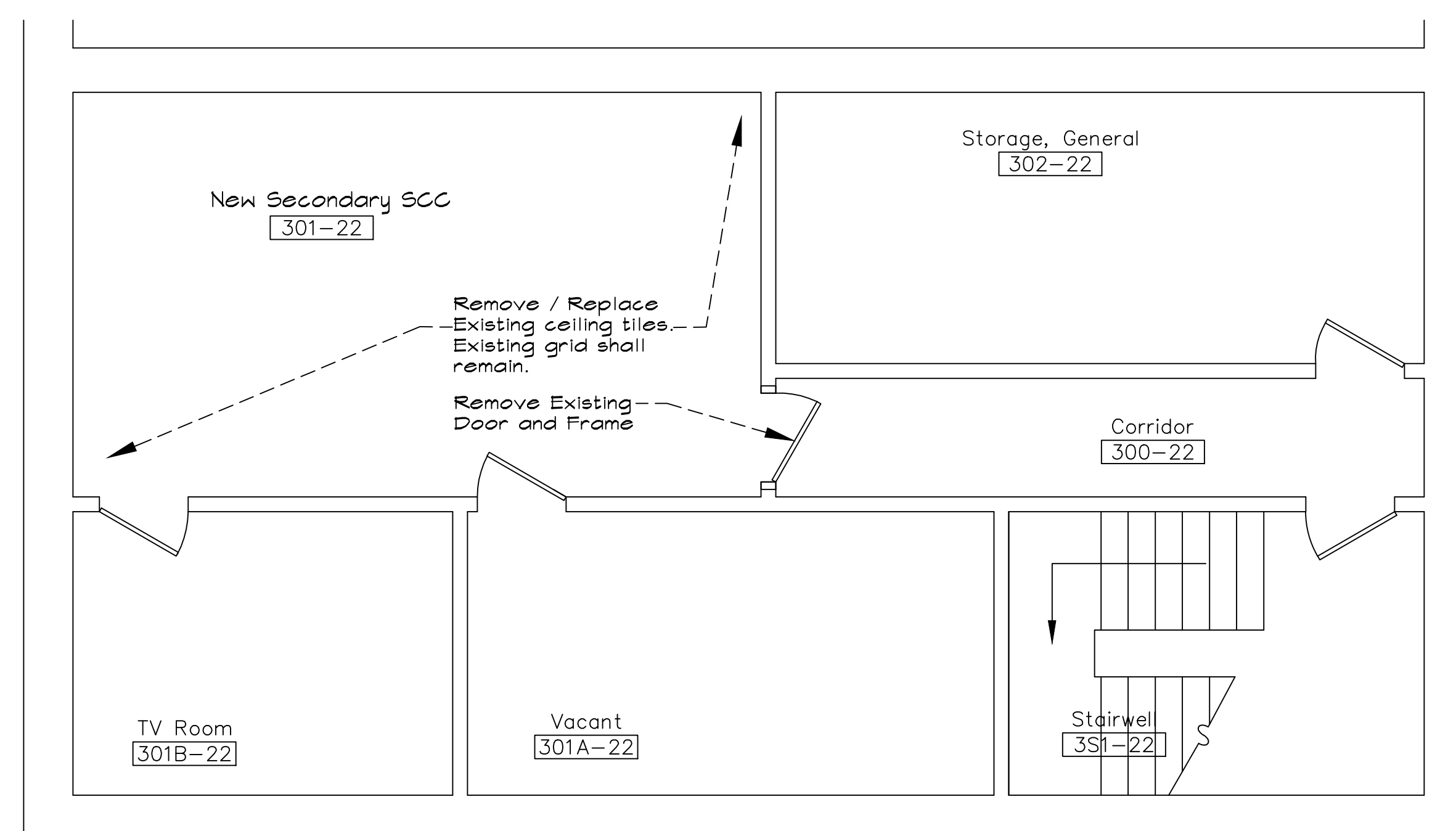
Partition Types  
(See Plans for location of Partition Types)



11 ACOUSTIC PANEL DETAIL  
Scale: 3" = 1'-0"



PARTIAL FLOOR PLAN  
SCALE: 1/4" = 1'-0"

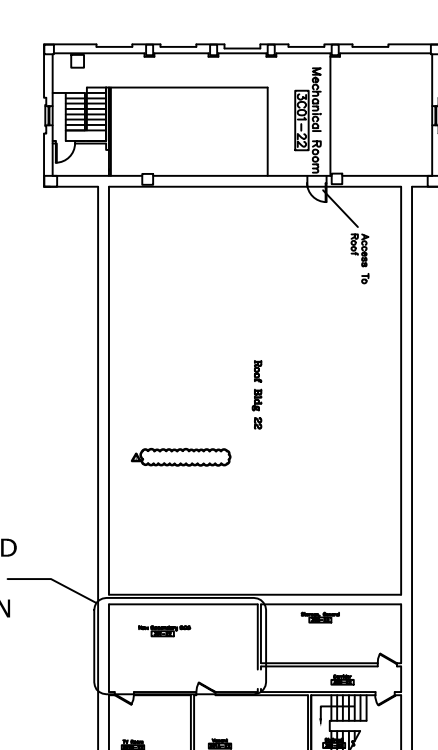


DEMOLITION FLOOR PLAN  
SCALE: 1/4" = 1'-0"

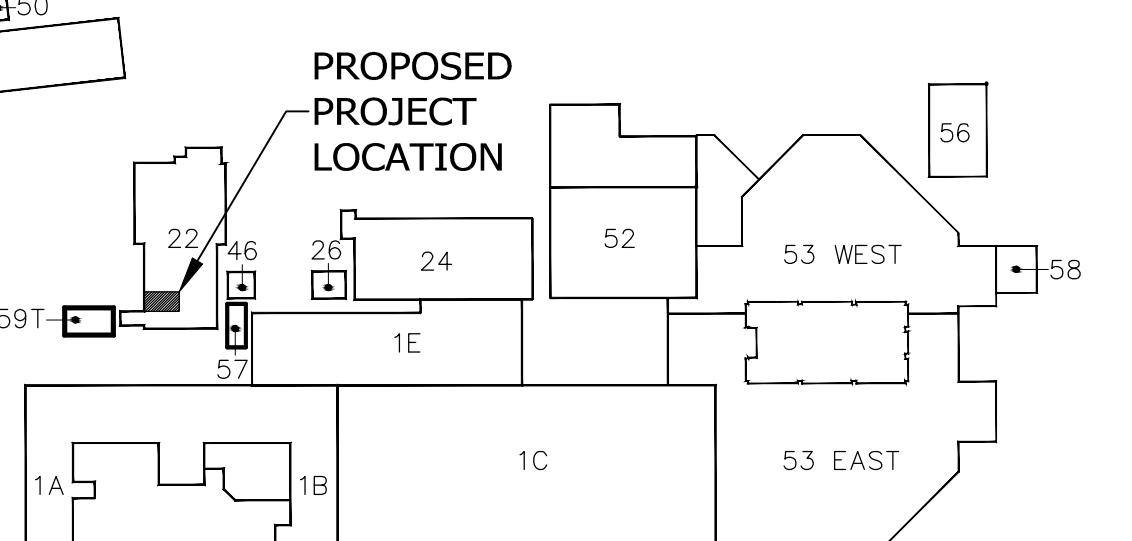
MATERIAL SCHEDULE					
ITEM NO.	ABBR	MATERIAL	MANUFACTURER	PRODUCT NO.	PRODUCT INFO.
1	E	EXISTING	-	-	-
2	C1	COMMERCIAL CARPET TILE	MOHAWK	SET IN MOTION 24"x24" TILE	100% NYLON, 17 OZ. STYLE# PATTERN LOOP COLOR: BLUE STEAM
3	VCT1	COMPOSITION TILE	ARMSTRONG	52505 EXCELON HARLEQUIN WHITE	12" X 12" X 1/8" THICK
4	P1	INTERIOR GRADE LATEX PAINT	SHERWIN - WILLIAMS	SW6106 KILIM BEIGE	EGGSHELL FINISH ON WALLS, SEMI-GLOSS ON DOORS AND TRIM
5	P2	INTERIOR GRADE LATEX PAINT	SHERWIN - WILLIAMS	SW0031 DUTCH TILE BLUE	EGGSHELL FINISH ON WALLS, SEMI-GLOSS ON DOORS AND TRIM
6	VB1	VINYL WALL BASE	ARMSTRONG	TBD FROM MFR STD	x
7	ACT1	ACOUSTICAL CEILING TILE	CERTAINTED	ECHOPHON HYGIENE PROTEC A	SQUARE EDGE 24" X 48" X 9/16" GRID WHITE-FINE TEXTURE
8	PL-1	HIGH-PRESSURE PLASTIC LAMINATE	WILSONART	7936 WILLIAMSBURG CHERRY	MEDIUM CHERRY WOOD GRAIN
9	PL-2	HIGH PRESSURE PLASTIC LAMINATE	WILSONART	7955 CHARDONNAY	LIGHT WOOD GRAIN
10	PL-3	HIGH PRESSURE PLASTIC LAMINATE	WILSONART	1570 WHITE	CABINET INTERIORS ONLY
11	FAB	ACOUSTIC FABRIC	ACOUSTICAL SOLUTIONS, INC.	BLUE / GREY	ADHESIVE APPLIED TO CORK BACKING.

- GENERAL NOTES
- All dispatch / operator functions and equipment in Primary Security Control Center shall be duplicated in Secondary Security Control Center.
  - All items shall be provided and installed to have equivalent functionality to the existing items in SCC 1D15T.

PLAN KEYED NOTES	
1	New Acoustic Divider and Desk
2	Equipment and cabling over finished floor. Over installed. Construction contractor shall provide electrical power provision as shown on electrical prints.
3	Surveillance System Computer Work Station
4	Fire Alarm Control Center
5	Durress Alarm Light 5th Floor Psych
6	IMPACT Digital Alarm System Surgery Med Gas Alarm
7	AMIGO Med Gas Alarm Panel Bldg 145B
8	Code Orange Alarm Panel Disaster Plan Alarm
9	70" Monitor
10	FCI Common alarm panel
11	Hostcell - Code Blue Station
12	VA Computer Work Station, O.F.O.I.
13	Provide and install UNISTRUT frame to support monitor in orientation indicated



BUILDING 22 - THIRD FLOOR  
BUILDING PLAN  
SCALE: 1" = 30'-0"



KEY PLAN

No.	Description	Date
1	ADDENDUM #7	2014/12/12

CONSULTANTS:  
**KJW ENGINEERING CONSULTANTS**  
KYLE J. WILSON, P.E.  
1001 S. WILSON BLVD., SUITE 104  
ST. LOUIS, MISSOURI 63104  
314.445.1173  
www.kjw-engineering.com

ARCHITECTS/ENGINEERS:  
**303rd Engineering Group, LLC**  
A Service Disabled Veteran-Owned Small Business  
1935 ARCADE STREET  
ST. LOUIS, MISSOURI 63113  
PHONIC: 314.644.3333  
HTTP://WWW.303ENGINEERING.COM

Dept. of Veterans Affairs  
Jack C. Montgomery  
Medical Center  
1011 Honor Height Drive  
Muskogee, Oklahoma 74401

APPROVED: CHIEF VA POLICE	APPROVED: President A.F.G.E. 2250	APPROVED: Energy Engineer	APPROVED: Medical Center Director
APPROVED:	APPROVED:	APPROVED: Safety Manager	APPROVED: Associate Director
APPROVED:	APPROVED:	APPROVED: Infection Control Nurse	APPROVED: Chief of Staff
APPROVED:	APPROVED:	APPROVED: Industrial Hygienist	APPROVED: Chief of Engineering Service

Drawing Title:  
**BLDG.22  
THIRD FLOOR  
SECONDARY SCC**  
Scale:  
**AS SHOWN**  
Building Number:  
**22**

Project Title:  
**REPLACE  
SURVEILLANCE  
SYSTEM**  
Date: MM - DD - YY  
**08 - 23 - 13**  
Project No.  
**623.12.105**  
Drawing No.  
**22 AE 101**  
Dwg. 03 of 122  
Approved: TWC - JCM/VAMC  
Checked By: CKF  
Drawn By: WMW  
Location: Jack C. Montgomery  
VA Medical Center - Muskogee, OK

Department of  
Veterans Affairs