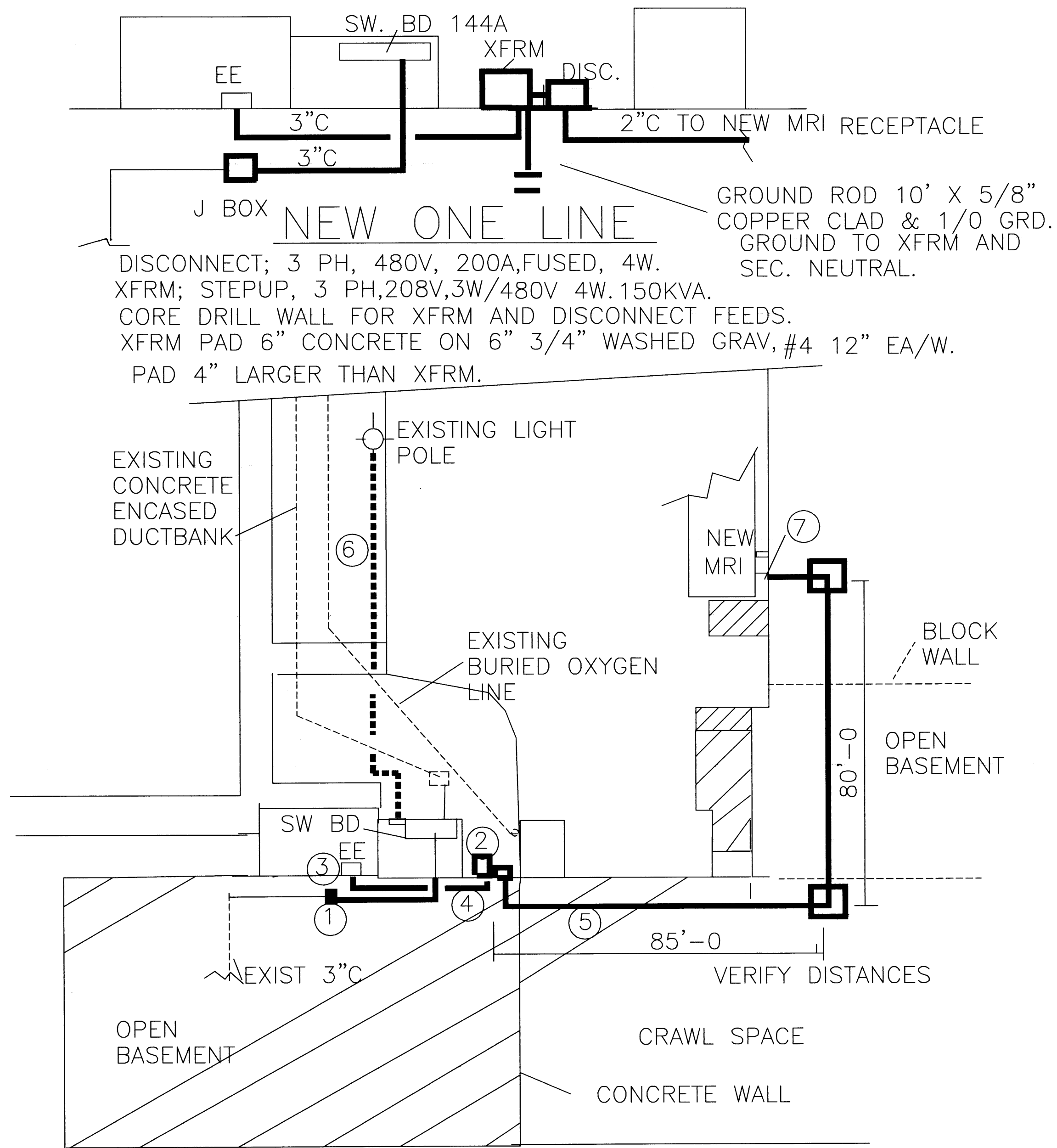


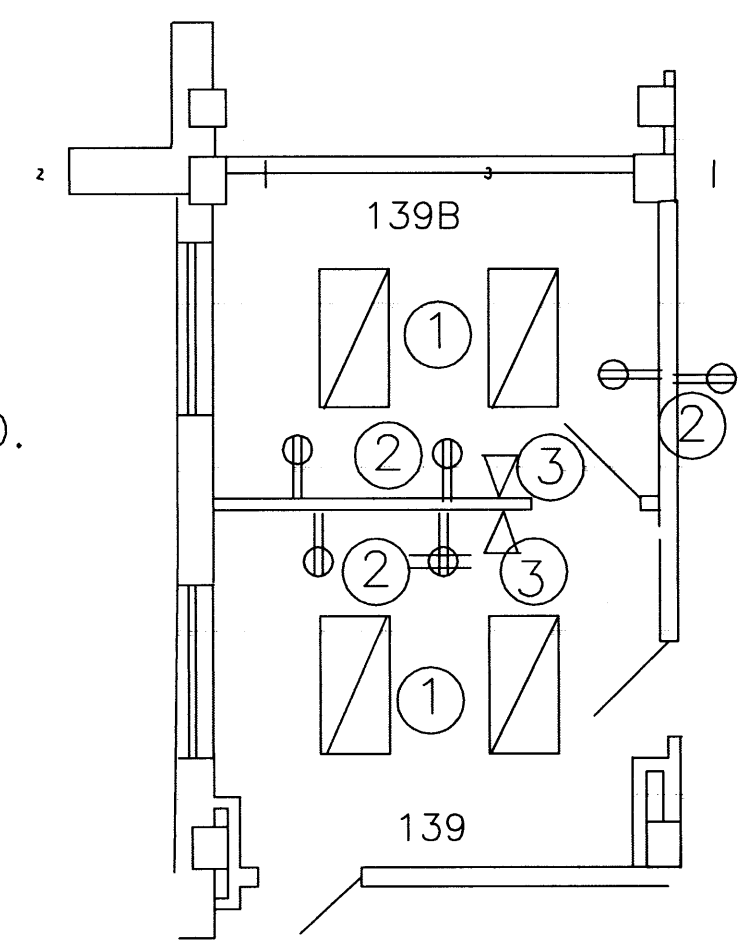
SITE ELECTRICAL DEMO

1. REMOVE CONDUCTORS/SLACK SPAN. REMOVE BACK TO FEED PANEL.
2. REMOVE OUTLETS FROM POLE.
3. REMOVE POWER POLE.
4. DISCONNECT MRI CONDUCTORS FROM CIRCUIT BREAKER IN EE PANEL. DISCONNECT/SEPARATE MRI CONDUIT IN BASEMENT & PULL CONDUCTORS BACK INTO BASEMENT.RELOCATE 200 AMP MRI CIRCUIT BREAKER TO NORMAL SWITCH BOARD 144A.



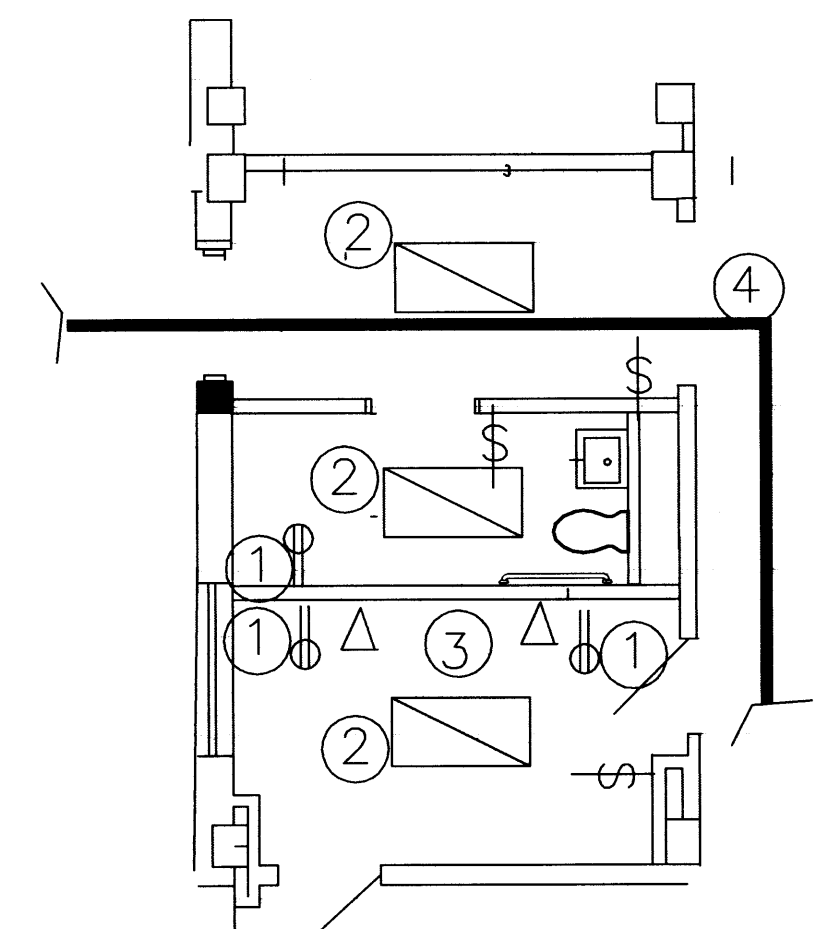
NEW SITE ELECTRICAL

1. INSTALL NEW JBOX ON EXISTING 3\"C. INSTALL NEW 3\"C TO EXIST 3\" CONDUIT STUB FROM SW BD 144A. INSTALL NEW 250 MCM CABLES (3) FROM J BOX TO RELOCATED 300 AMP CB IN SW BD 144A. SPLICE CABLES W/POLARIS CONNECTORS.
2. INSTALL NEW DISCONNECT ON EXT WALL. INSTALL NEW XFRM ON CONCRETE PAD.
3. INSTALL NEW 400 AMP CIRCUIT BREAKER IN EE PANEL.
4. INSTALL NEW 3\" CONDUIT FROM EXIST CONDUIT STUB FROM EE PANEL TO NEW XFRM.INSTALL 3- 500 MCM CONDUCTORS FROM 400 A CB IN EE TO XFRM.
5. INSTALL NEW 2\" CONDUIT W/3- 3/0, 1 -3/0 N & 1- #6 GRD FROM XFRM TO DISCONNECT AND DISCONNECT TO MRI POWER FEED PLUG.
6. INSTALL 2- #12 & 1- #12 N, 1- #12 GRD IN 1/2\" RIDGID EXPOSED AND 1/2\" PVC BURIED 24\" FROM 144A HOUSE PANEL TO LIGHT POLE. CONNECT CIRCUITS TO SPARE CB'S AND TO LIGHT POLE AND SPRINKLER CONTROLLER.
7. INSTALL/MOUNT RECEPT ON WALL; RUSSELL STOW DF2504FRAB0. INSTALL 10' X 5/8\" COPPER CLAD GROUND ROD AND CONNECT W/#6 GROUND.



ELECTRICAL DEMO

1. REMOVE LIGHT FIXTURES.
2. REMOVE RECEPTACLES SHOWN AND REMOVE WIRE CONDUIT BACK TO JBOX.
3. REMOVE TELECOM OUTLET. TO BE RELOCATED.



NEW ELECTRICAL

1. INSTALL RECEPTACLE, CONNECT TO EXISTING CIRCUIT.
2. INSTALL NEW LIGHT FIXTURE. 2'X4';DAYBRITE, 2SPG232FS01120 1/2EB. CONNECT TO EXIST CIRCUIT AND SWITCH LEG.
3. REINSTALL TELECOM OUTLETS.
4. INSTALL 4 CAT 5 TELECOM CABLES, PLENUM, FROM MRI BLDG TO TELCO RM 272. INSTALL 1V/3D JACKS IN OUTLET. MATCH EXISTING PLATES,ETC. TERMINATE AND TEST.

VA MONTANA HEALTHCARE SYSTEM
FT HARRISON, MT

ELECTRICAL WORK

APPROVED; CONSTRUCTION/ENGINEERING

Project Title
MRI BLDG
SITE PREP

Building Number
Checked
Drawn RD
Location
FT HARRISON, MT

Date
2-11-08
Project No.

DRAWING NO.
Dwg 4 of 5

DEPARTMENT OF
VETERANS AFFAIRS