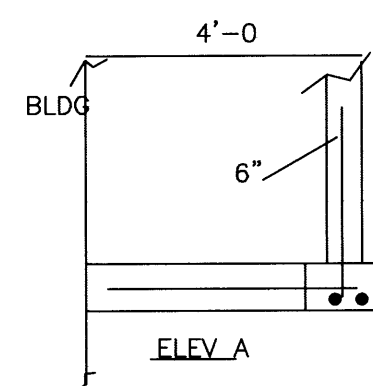
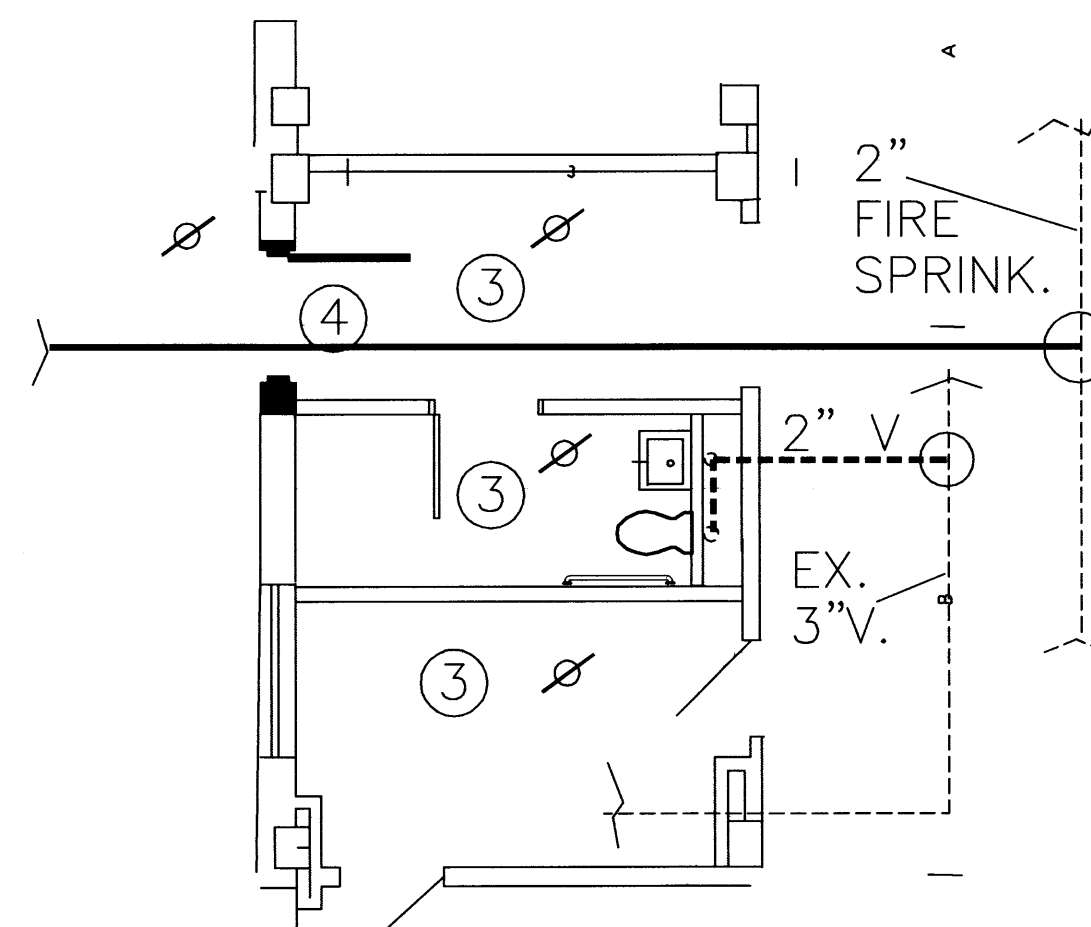


STAIR SECTION

MATCH EXISTING RAILING ON EXISTING DOCK. STAIR NOSING TO BE SAME TYPE AS ON CONNECTING CORRIDOR STAIR. INSTALL NEW RAILING AT EXISTING STAIR LOCATION.

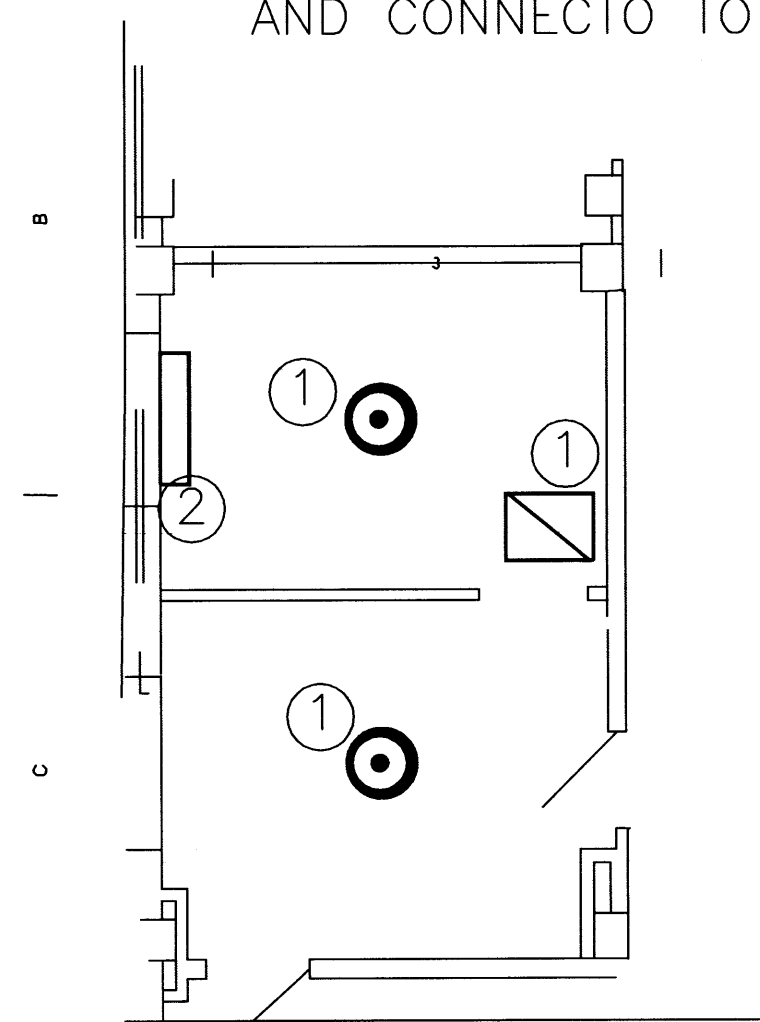


- ① INSTALL NEW CONCRETE CURB/GUTTER. ON 6" OF 2" MINUS BASE. BUTT CURB/GUTTER TO EXIST.
- ② INSTALL 5'-0" CHAIN LINK FENCE W/MOVABLE AND BURIED POSTS. BURY SOLID POSTS 2'-0" IN 1'-0" DIA CONCRETE. 1 5/8" dia posts w/ standard connections. Locking hasp on gate. 12 gage chain link.
- ③ INSTALL NEW CONCRETE STAIR. MATCH SIZE OF EXISTING AND RAILINGS.
- ④ INSTALL 4" ASPHALT ON 8" OF 2" MINUS BASE.



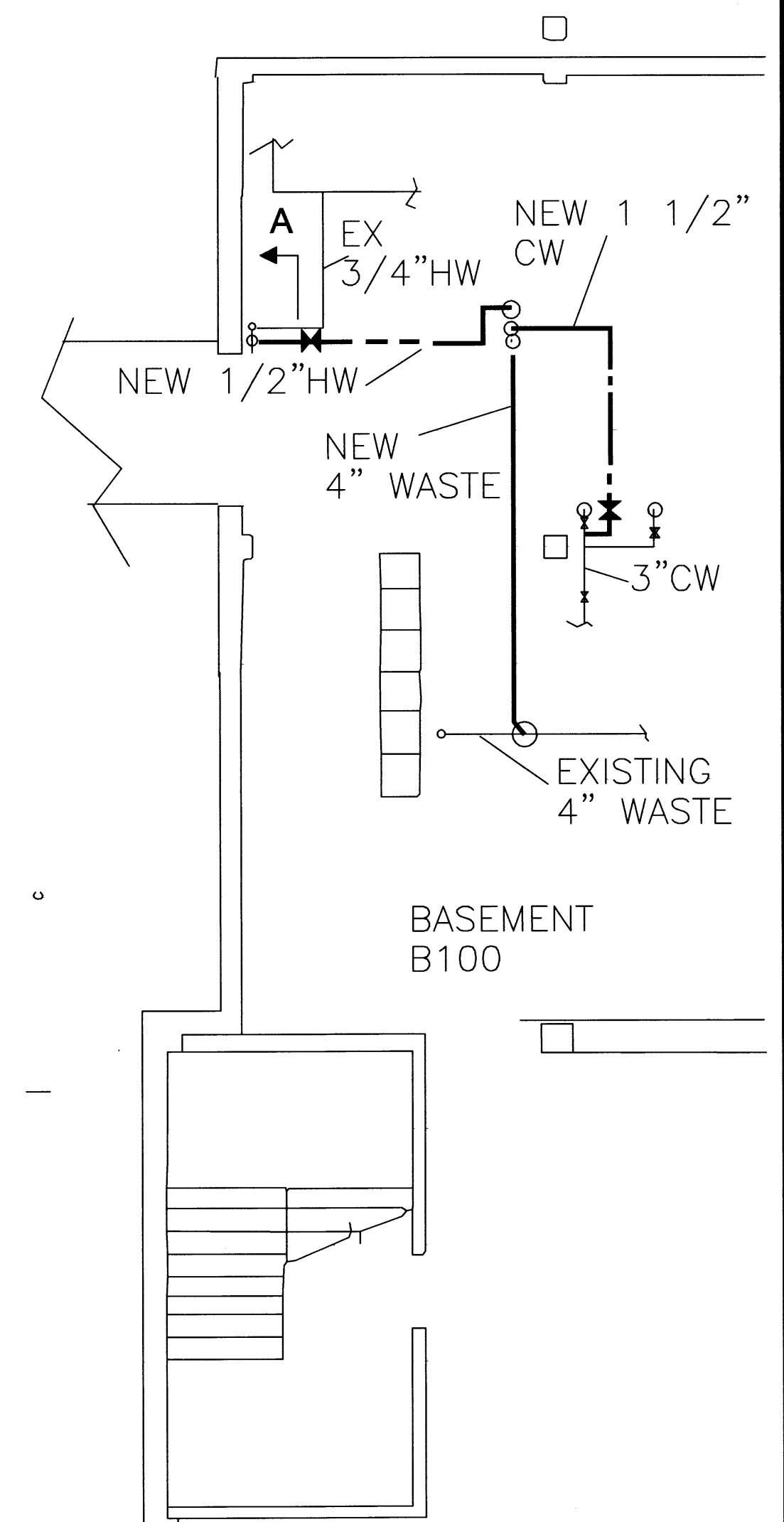
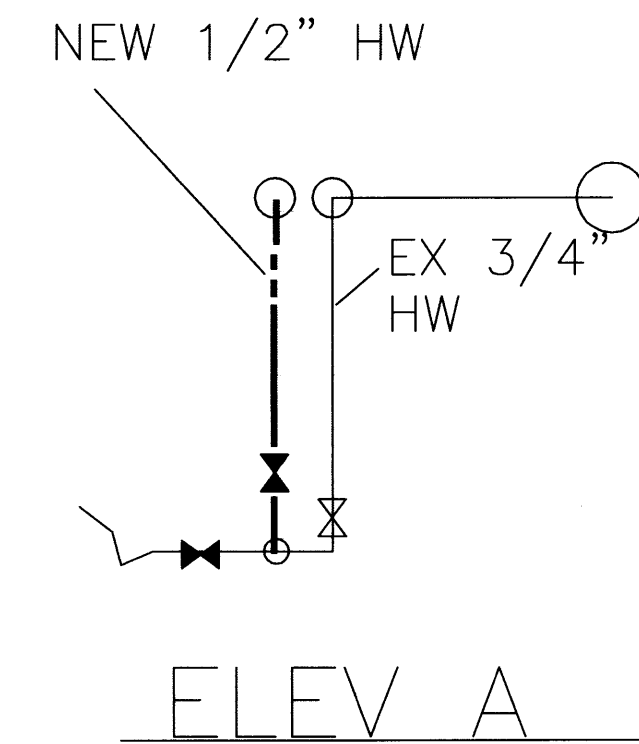
NEW PLUMBING

- ① INSTALL NEW SINK; KOHLER K2005 W/FAUCET AM.STANDARD WRIST BLADE 5500.170. INSTALL NEW TOILET/WATER CLOSET KOHLER K4330, FLUSH VALVE, JAY SMITH 0410Y WATER CLOSET.
- ② INSTALL NEW C&HW, VENT, WASTE AS SHOWN ON PLUMBING PLAN. ALL BRANCH LINES TO HAVE BALL VALVES.
- ③ REMOVE EXISTING SPRINKLER HEADS AND REINSTALL EXISTING HEADS/NEW HEADS WHERE SHOWN. INSTALL NEW SPRINKLER LINE TO NEW BLDG AND CONNECT.
- ④ INSTALL NEW FIRE SPRINK LINE FROM EXIST 2" AND CONNECT TO MRI BLDG CONNECTION.

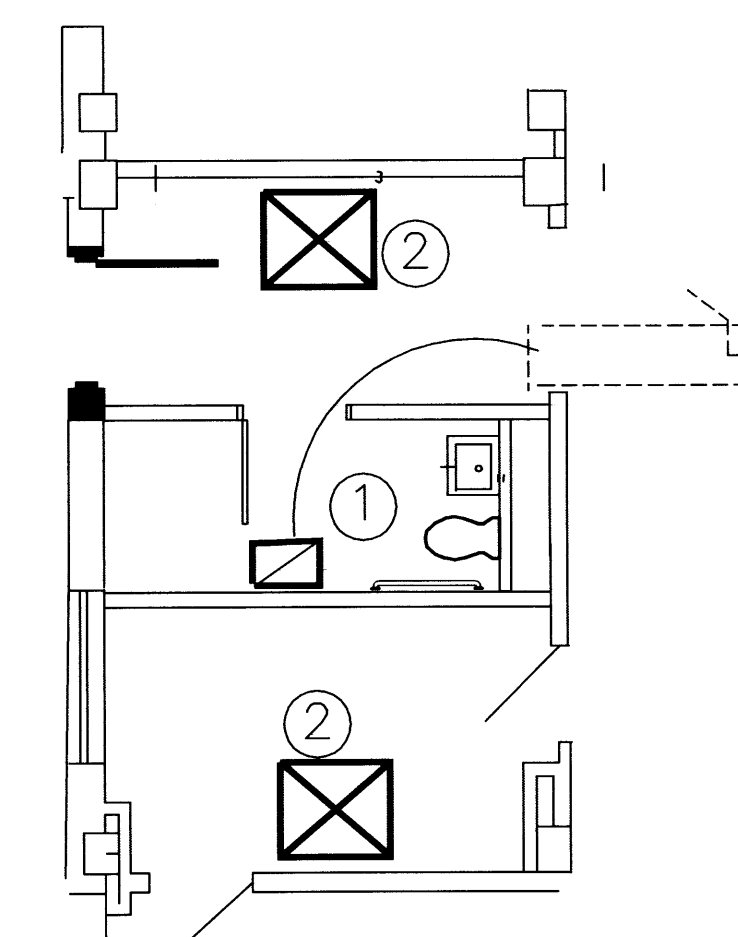


MECHANICAL DEMO

1. REMOVE S/A DIFFUSOR OR EXHAUST GRILL AND BRANCH DUCT. CAP DUCT.
2. REMOVE CONVECTOR AND CAP OFF STEAM RUN OUTS BELOW FLOOR. SEAL HOLES.



BASEMENT NEW PLUMBING



NEW MECHANICAL

- ① INSTALL 2'X2' LAYIN EXHAUST W 8" RD NECK. CONNECT TO EXHAUST DUCT W/8" FLEX AND VOL DAMPER.
- ② INSTALL 2'X2' LAY IN SUPPLY AIR DIFFUSOR W/8" RD NECK. CONNECT TO SA DUCT WITH 8: FLEX AND VOL DAMPER.

VA MONTANA HEALTHCARE SYSTEM
FT HARRISON, MT

Drawing Title
NEW SITE, MECH DEMO
NEW MECH/PLUMB.

APPROVED: CONSTRUCTION/ENGINEERING

Project Title
MRI BLDG SITE
PREP

Building Number

Checked

Drawn

RD

Location

FT HARRISON, MT

Date
2-11-08

Project No.

DRAWING NO.

Rev 3

DEPARTMENT OF
VETERANS AFFAIRS