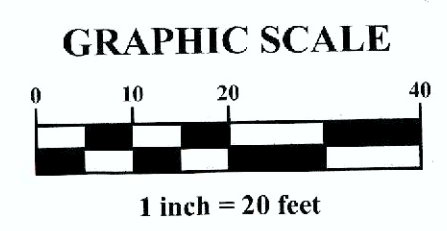
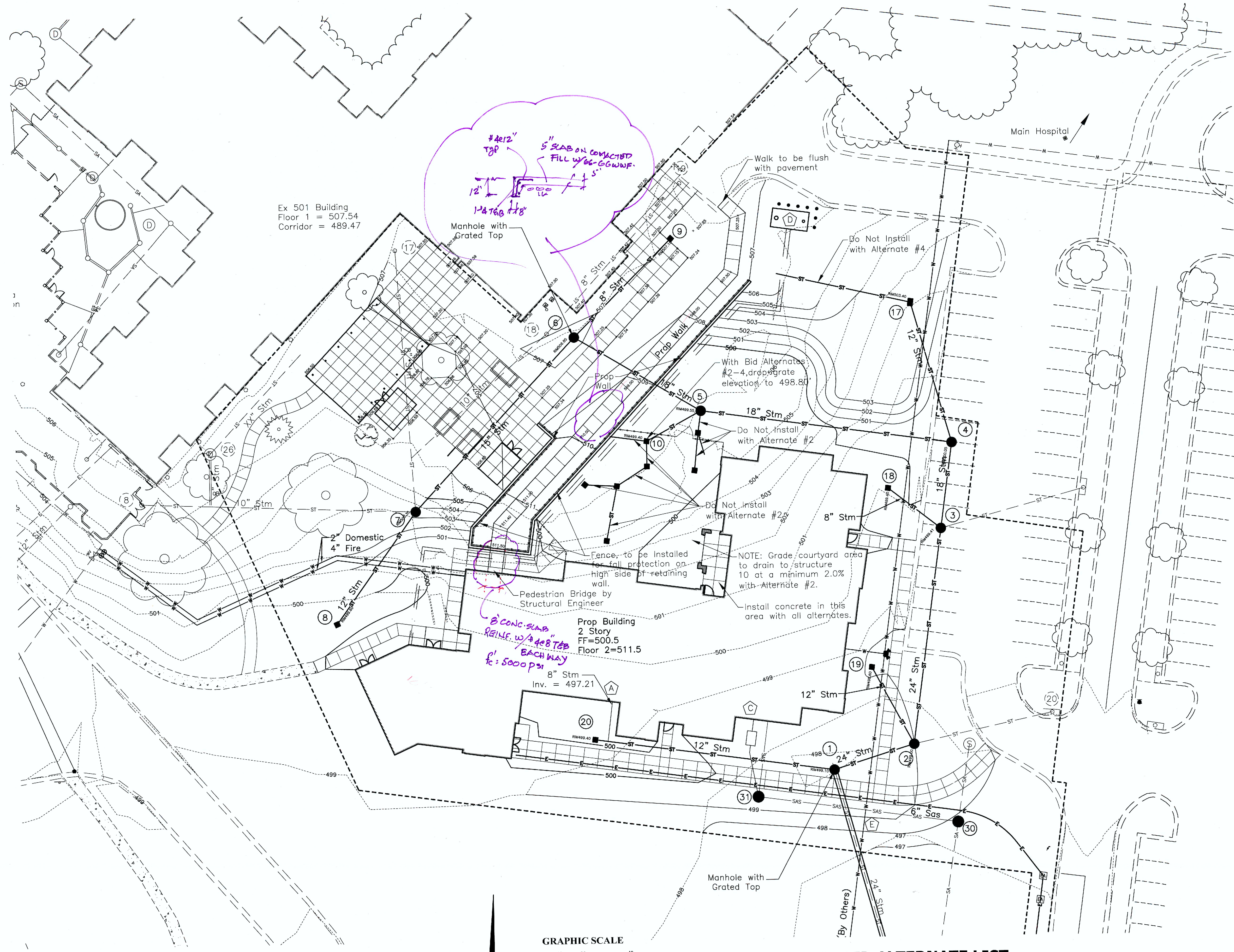


one and one half inches = one foot  
one inch = one foot  
three quarters inch = one foot  
one half inch = one foot  
one quarter inch = one foot  
one eighth inch = one foot



**SITE BID ALTERNATE LIST:**

- BID ALTERNATE #1:**  
ELIMINATE LOADING DOCK PAVING AND LOCATION OF THE REMOTE FUEL STORAGE TANK AND BOLLARDS AS SHOWN ON CS108. DUE TO REMOVAL OF LOADING DOCK PAVING THE LIMITS OF DEMOTION (CS105) AND PAVEMENT REPLACEMENT (CS108) ARE MODIFIED. SEE LP106 FOR MODIFIED LANDSCAPE PLANTINGS.
- BID ALTERNATE #2:**  
ELIMINATE TEMPORARY CONSTRUCTION ACCESS AND CONCRETE WALKS, STEPS, RAMPS, PLANTER WALLS, UNDERDRAINS, RAINWATER HARVESTING SYSTEM AND IRRIGATION IN COURTYARD AREA AS SHOWN ON SHEET LP105. SIDEWALK TO REMAIN INCLUDES WALK ON SOUTH AND EAST SIDES OF BUILDING AND PORTIONS EXITING THE NORTH SIDE OF THE ELEVATOR LOBBY AREA. SEE CS109A FOR CLARIFICATION ON ANY SIDEWALKS TO REMAIN IN CONTRACT.
- BID ALTERNATE #3:**  
EXTEND LIMITS OF GRADING TO SINGLE WIDE CORRIDOR (SEE ARCHITECTURAL DRAWINGS FOR LIMITS OF SINGLE WIDE CORRIDOR).
- BID ALTERNATE #4:**  
DELETE CONNECTING CORRIDOR, ADD RETAINING WALL AND PEDESTRIAN WALK BRIDGE (SEE STRUCTURAL PLANS FOR DETAILS). ADD 6' WIDE WALK CONNECTION FROM 501 BUILDING TO PROPOSED BUILDING, REDUCE LIMITS OF UPPER COURTYARD CONCRETE INSTALLATION. FOR GRADING MODIFICATIONS AND CLARIFICATION OF SCOPE, SEE CS109A. INSTALL LOW VOLTAGE DUCT BANK PER MECHANICAL PLANS.

**LEGEND**

**Existing**

- Sanitary Sewer
- Storm Sewer
- Water Main
- Electric
- Fire Hydrant
- Water Valves
- Electric Pull Box
- Electric Outlet
- Electric Pedestal Box
- Wooden Light Pole
- Metal Light Pole
- Mailbox
- Fence Post
- Sign
- Trees
- Bushes
- Contours
- Structure Number

**Proposed**

- Contours
- Spot Elevation
- Limits of Disturbance (1.91 Acres)
- Storm Structure Number
- Water Line
- Water Valve
- Fire Department Connection
- Storm Line
- Storm Manhole
- Storm Catch Basin
- Storm Yard Inlet
- Sanitary Service
- Sanitary Main (By Others)
- Sanitary Manhole (By Others)
- Electric Line
- Electric Manhole
- Gas Line

**Key Notes**

- Roof Drain Connection Location (Sitework limits to 5' outside building)
- Rainwater Collection System Roof Drainage Connection Location
- Sanitary Sewer Connection Location (Sitework limits to 5' outside building)
- Fuel Oil Tank
- Contractor to Verify As-Built Water Elevations and ensure 24" clearance to sanitary lateral

**Notes**

- Location of existing utilities indicated on these plans is approximate. Contractor shall verify location of all existing utilities prior to construction.
- No blasting is allowed on-site.
- See Detail C, CS104 for patching of existing pavement associated with proposed utility work.
- See Specification 31 20 11 for backfill requirements with utility excavation.
- Reference CS109 for grading in areas not impacted by deduct alternates.

CONSULTANTS:		ARCHITECT/ENGINEERS:		Drawing Title		Project Title		Project Number		Office of Construction and Facilities Management Department of Veterans Affairs	
EMHT		C.C. HODGSON ARCHITECTURAL GROUP		ALTERNATE GRADING AND UTILITY PLAN		RELOCATE DEMENTIA UNIT		VA PN 613-207			
Evans, Melchior, Hamilton & Horn, Inc. Engineers • Surveyors • Planners • Scientists 5500 New Albany Road, Columbus, OH 43244 Phone: 614/775-6500 • Fax: 614/775-3449 emht.com		Professional Engineer Seal		Approved: Project Director		Location VAMC, MARTINSBURG		Building Number 513			
						Date 01/17/2014		Checked JAM		Drawing Number CS109A	
								Drawn SBO		Dwg. 9 of 17	