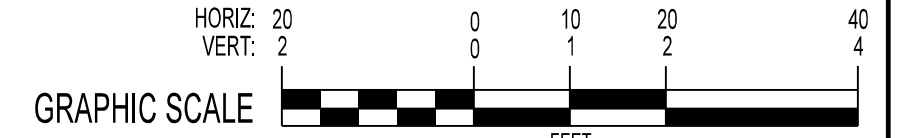
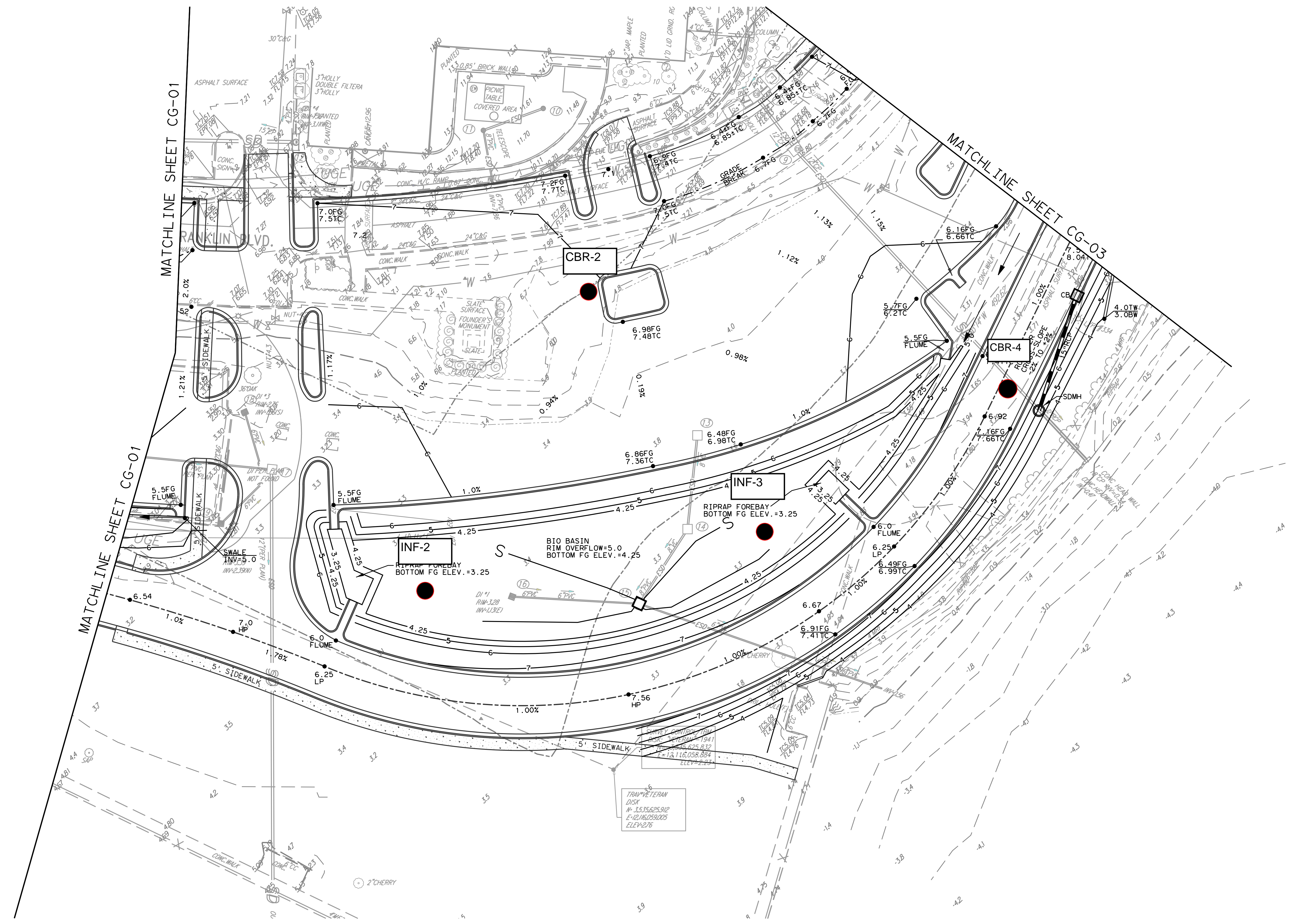


		<b>CONSULTANTS:</b>   <b>HAMPTON</b>  DEPARTMENT OF VETERANS AFFAIRS				<b>ARCHITECT/ENGINEERS:</b>   104 Gillespie Street Fayetteville, NC 28301 Ph: 910.486.0700 Fax: 910.486.8900 www.callsignengineers.com NC Firm License No. C-3485		Drawing Title DESIGN DEVELOPMENT 2  GRADING AND DRAINAGE PLAN  Approved Project Director		Project Title FRANKLIN BLVD. REALIGNMENT  Location HAMPTON, VA.  Date JULY 16, 2014		Project Number VET_0001E  Building Number  Drawing Number SHEET CG-01  Day 12 of 20		Office of Construction and Facilities Management   Department of Veterans Affairs	
--	--	---	--	--	--	--	--	---	--	---	--	---	--	--	--



one eighth inch = one foot  
one quarter inch = one foot  
three eighths inch = one foot  
one half inch = one foot  
three quarters inch = one foot  
one inch = one foot  
one and one half inches = one foot  
two inches = one foot  
three inches = one foot



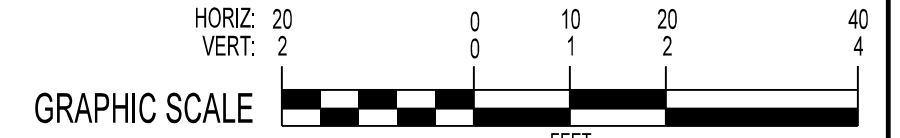
<div>CONSULTANTS:</div> <div> <b>HAMPTON</b> DEPARTMENT OF VETERANS AFFAIRS</div>	<div>ARCHITECT/ENGINEERS:</div> <div><b>CALL SIGN ENGINEERS</b> 104 Gillespie Street Fayetteville, NC 28301 Ph: 910.486.0700 Fax: 910.486.8900 www.callsignengineers.com NC Firm License No. C-3485</div>	<div>Drawing Title</div> <div>DESIGN DEVELOPMENT 2</div> <div>GRADING AND DRAINAGE PLAN</div> <div>Approved Project Director</div>	<div>Project Title</div> <div>FRANKLIN BLVD. REALIGNMENT</div> <div>Location</div> <div>HAMPTON, VA.</div> <div>Date</div> <div>JULY 16, 2014</div> <div>Checked</div> <div>GAR</div> <div>Drawn</div> <div>JBR</div>	<div>Project Number</div> <div>VET_0000E</div> <div>Building Number</div> <div></div> <div>Drawing Number</div> <div>SHEET CG-02</div> <div>Page</div> <div>13 of 20</div>	<div>Office of Construction and Facilities Management</div> <div> Department of Veterans Affairs</div>
--	--	--	---	--	---



one eighth inch = one foot  
one quarter inch = one foot  
three eighths inch = one foot  
one half inch = one foot  
three quarters inch = one foot  
one inch = one foot  
one and one half inches = one foot  
two inches = one foot  
three inches = one foot



MATCHLINE SHEET CG-02



<div>CONSULTANTS:</div> <div><div>HAMPTON</div><div>DEPARTMENT OF VETERANS AFFAIRS</div></div>	<div>ARCHITECT/ENGINEERS:</div> <div><div>104 Gillespie Street Fayetteville, NC 28301 Ph: 910.486.0700 Fax: 910.486.8900 www.callsignengineers.com NC Firm License No. C-3485</div></div>	<div>Drawing Title</div> <div>DESIGN DEVELOPMENT 2</div> <div>GRADING AND DRAINAGE PLAN</div> <div>Approved Project Director</div>	<div>Project Title</div> <div>FRANKLIN BLVD. REALIGNMENT</div> <div>Location</div> <div>HAMPTON, VA.</div> <div>Date</div> <div>JULY 16, 2014</div> <div>Checked</div> <div>GAR</div> <div>Drawn</div> <div>JBR</div>	<div>Project Number</div> <div>VET_0000E</div> <div>Building Number</div> <div></div> <div>Drawing Number</div> <div>SHEET CG-03</div> <div>Day 14 of 20</div>	<div>Office of Construction and Facilities Management</div> <div>Department of Veterans Affairs</div>
---	--	--	---	--	--