

I:\CAD\2003\0124\01

one-eighth inch = one foot

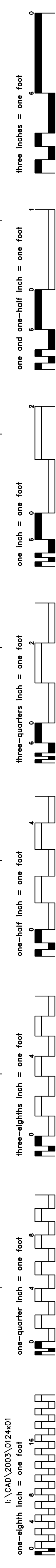
F

E

C

B

A



NOTES:

1. THIS SCHEDULE IS A STANDARD SCHEDULE. CERTAIN SYMBOLS & ABBREVIATIONS INDICATED ON THIS SCHEDULE MAY NOT APPEAR ON THE DRAWINGS.
2. EQUIPMENT SYMBOLS SHOWN DASHED ON THE DRAWINGS INDICATE EXISTING EQUIPMENT.
3. CERTAIN MOUNTING HEIGHTS INDICATED ON THIS DRAWING ARE TO BE USED AS A GUIDE ONLY AND MAY HAVE TO BE CHANGED TO COMPLY WITH REGULATIONS GOVERNING MOUNTING HEIGHTS OF EQUIPMENT FOR USE BY THE PHYSICALLY HANDICAPPED. CONSULT WITH THE AUTHORITY HAVING JURISDICTION BEFORE EQUIPMENT INSTALLATION AND INSTALL ACCORDINGLY.

ELECTRICAL SYMBOLS - POWER PLAN

MOTOR - SEE DRAWINGS FOR RATING OF MOTOR

JUNCTION BOX

HOMERUN TO PANEL - ARROWHEADS INDICATE QUANTITY OF CIRCUITS, WIRES INDICATED ARE GREEN GROUND, NEUTRAL AND THREE HOT LEGS (A DIFFERENT PHASE FOR EACH CIRCUIT). MAXIMUM THREE CIRCUITS PER CONDUIT. UNLESS NOTED OTHERWISE, PROVIDE 2 #12 & 1 #12 GRD IN 3/4" CONDUIT. FOR SINGLE PHASE WORK, 3 #12 & 1 #12 GRD. IN 3/4" CONDUIT. FOR THREE PHASE WORK.

DISCONNECT, RELOCATE AND RECONNECT

CROSSHATCHING INDICATES EQUIPMENT AND/OR WIRING TO BE RENDERED DEAD AND REMOVED BY EC

SWITCH LEG

BRANCH CIRCUIT

SWITCHED CIRCUIT

INDICATES KEYNOTE ELSEWHERE

ENCLOSED CIRCUIT BREAKER, RATING AS INDICATED

TRANSFORMER, RATING AS NOTED

PANELBOARD CABINET, SURFACE MOUNTED

RECEPTACLE, DUPLEX

RECEPTACLE, DUPLEX, CONNECTED TO THE NORAML/EMERGENCY SYSTEM

RECEPTACLE, DUPLEX, WITH GROUND FAULT CIRCUIT INTERRUPTER

RECEPTACLE, DUPLEX, WITH GASKETED WEATHERPROOF COVER

FINAL CONNECTION TO EQUIPMENT BY ELECTRICAL CONTRACTOR

FINAL CONNECTION BY EC TO ELEVATOR SHUNT TRIP MECHANISM

DISCONNECT SWITCH, FUSED, RATING AS NOTED ON DRAWINGS

DISCONNECT SWITCH, UNFUSED, RATING AS NOTED ON DRAWINGS

LIGHT FIXTURE, FLUORESCENT, SURFACE MOUNTED TO CEILING.

LIGHT FIXTURE, LED, WALL MOUNTED. SHADING INDICATES FIXTURE IS CONNECTED TO NORMAL/EMERGENCY POWER

SWITCH

BLANK = SINGLE POLE
3 = THREE-WAY
4 = FOUR-WAY
D = DIMMER
LV= LOW VOLTAGE
AB= INBOARD/OUTBOARD CONTROL
M = SINGLE POLE, MANUAL MOTOR SWITCH

COMMUNICATION SYMBOLS

OUTLET, DATA COMMUNICATION

OUTLET, WALL MOUNTED TELEPHONE OUTLET, MOUNTED @ 80" AFF

NOTE:

WHERE SYMBOLS ARE SHOWN, PROVIDE ONE CAT 6 CABLE FROM OUTLET TO TELECOM CLOSET SA102 LOCATED ON THE FIFTH FLOOR LEAVING 20' SLACK CABLE IN TELECOM CLOSET FOR TERMINATION BY OTHERS

FIRE ALARM SYSTEM SYMBOLS

ALARM, FIRE, CONTROL PANEL

ALARM, FIRE, TERMINAL CABINET.

ALARM, FIRE, MANUAL PULL STATION

FIRE ALARM SYSTEM CEILING MOUNTED SPEAKER/STROBE

VISUAL NOTIFICATION DEVICE, STROBE

ELECTROMAGNETIC TYPE DOOR HOLDER OUTLET

DETECTOR; PHOTOELECTRIC TYPE

DETECTOR; PHOTOELECTRIC TYPE. INTERM LIFE SAFETY DEVICE

DETECTOR; HEAT

ABBREVIATIONS

1PH	SINGLE-PHASE	MACH	MACHINE
1P	SINGLE POLE	MAX	MAXIMUM
2/C	TWO-CONDUCTOR	MECH	MECHANICAL
3/C	THREE-CONDUCTOR	MIN	MINIMUM
3PH	THREE-PHASE	MM	MULTI-MODE
4/C	FOUR-CONDUCTOR	MT	MOUNT
4W	FOUR-WIRE	MTD	MOUNTED
		MTG	MOUNTING
A/C UNIT	AIR CONDITIONING UNIT	NA	NOT APPLICABLE
A/E	ARCHITECT/ENGINEER	NEC	NATIONAL ELECTRICAL CODE
AB	ABOVE COUNTER	NEUT OR N	NEUTRAL
AC	ALTERNATING CURRENT OR ARMORED CABLE	NIC	NOT IN CONTRACT
ACC	ACCESSIBLE	NS	NO SCALE
ADDL	ADDITIONAL	NTS	NOT TO SCALE
ADJ	ADJACENT, ADJOINING	OC	ON CENTER
ADO	AUTOMATIC DOOR OPENER	OD	OUTSIDE DIAMETER
AFC	ABOVE FINISHED COUNTER		
AFF	ABOVE FINISHED FLOOR	P	POLE
AFG	ABOVE FINISHED GRADE	PA	PUBLIC ADDRESS
AHJ	AUTHORITY HAVING JURISDICTION	PB	PULL BOX, OR PUSHBUTTON
ALT	ALTERNATE	PBU	PREFABRICATED BEDSIDE PATIENT UNIT
AMB OR A	AMBIENT	PED	PEDESTAL
ARCH	ARCHITECT	PEND	PENDANT
ATS	AUTOMATIC TRANSFER SWITCH	PF	POWER FACTOR
AUTO	AUTOMATIC	PH	PHASE
AV	AUDIO VISUAL	PNL	PANELBOARD
		PVC	POLYVINYL CHLORIDE (PLASTIC)
BAT	BATTERY	PWR	POWER
BC	BARE COPPER	RCP	REFLECTED CEILING PLAN
BFC	BELOW FINISHED CEILING	REC	RECESSED
BFF	BELOW FINISH FLOOR	RECPT	RECEPTACLE
BLDG	BUILDING	RGS	RIGID GALVANIZED STEEL
BPIP	BOILER PLANT INSTRUMENTATION	RLA	RUNNING LOAD AMPS
BYP	BY PASS	RM	ROOM
		REQD	REQUIRED
C	CONDUIT	SF	SQUARE FOOT (FEET)
CAB	CABINET	SHT	SHEET
CALC	CALCULATE	SPD	SURGE PROTECTION DEVICE
CAP	CAPACITY	SPEC	SPECIFICATION
CAT	CATALOG	SURF	SURFACE
CATV	COMMUNITY ANTENNA TELEVISION	SW	SWITCH
CC	CRITICAL CARE	TEL	TELEPHONE
CCTV	CLOSED CIRCUIT TELEVISION	TP	TWISTED PAIR
CD	CONSTRUCTION DOCUMENTS	TPS	TWISTED PAIR SHIELDED
CF	CONTRACTOR FURNISHED	TTB	TELEPHONE TERMINAL BOARD
CF/CI	CONTRACTOR FURNISHED/CONTRACTOR INSTALLED	TV	TELEVISION
CF/CI	CONTRACTOR FURNISHED/OWNER INSTALLED	TV	TYPICAL
CFC	CONTRACTOR FURNISHED EQUIPMENT	UFD	UNDERFLOOR DUCT
CLG	CEILING	UGND	UNDERGROUND
CMU	CONCRETE MASONRY UNIT	UL	UNDERWRITERS LABORATORY
COAX	COAX CABLE	UNLESS NOTED OTHERWISE	
COMM	COMMUNICATION	UPS	UNINTERRUPTIBLE POWER SUPPLY
COMPT	COMPARTMENT	UTIL	UTILITY
CONC	CONCRETE		
CONT	CONTINUE	V	VOLT
CONTR	CONTRACTOR	WP	WEATHERPROOF
COORD	COORDINATE		
CRS	COLD ROLLED STEEL		
CTV	CABLE TELEVISION		
CU	COPPER		
CU FT	CUBIC FEET		
CUR	CURRENT		
DB	DECIBEL OR DIRECT BURIAL		
DC	DIRECT CURRENT		
DEG C	DEGREES CELSIUS		
DEG F	DEGREES FAHRENHEIT		
DEMO	DEMOLITION		
DIAG	DIAGRAM		
DISTR	DISTRIBUTION		
DN	DOWN		
DRSW	DOOR SWITCH		
DWG	DRAWING		
EC	EMPTY CONDUIT		
EE	ESSENTIAL EQUIPMENT		
EG	EQUIPMENT GROUND		
EL	ELEVATION		
ELEC	ELECTRIC OR ELECTRICAL		
ELEV	ELEVATOR		
EMER	EMERGENCY		
EMI	ELECTROMAGNETIC INTERFERENCE		
EMT	ELECTRICAL METALLIC TUBING		
ENCL	ENCLOSURE		
EPO	EMERGENCY POWER OFF		
ETR	EXISTING TO REMAIN		
EX OR	EXISTING		
EXIST	EXISTING		
FLEX	FLEXIBLE METALLIC CONDUIT		
FOUTT	TELEPHONE FLOOR OUTLET		
FP	FIRE PROTECTION		
FT	FEET OR FOOT		
FU SW	FUSED SWITCH		
G OR GND	GROUND OR GENERATOR		
GEN	GENERATOR		
GTB	GROUND TERMINAL BOX		
HOA	HAND-OFF-AUTOMATIC		
HPC	HIGH PAIR COUNT		
HT	HEIGHT		
HZ	HERTZ		
IMC	INTERMEDIATE METAL CONDUIT		
IR	INFRARED		
J-BOX	JUNCTION BOX		
LAN	LOCAL AREA NETWORK		
LF	LINEAR FEET (FOOT)		
LTG	LIGHTING		
LTNG	LIGHTNING		
LS	LIFE SAFETY		
LV	LOW VOLTAGE		
LVL(S)	LEVEL(S)		

FIRE RATED WALL LEGEND:

SMOKE BARRIER

1-HOUR FIRE RATED WALL

2-HOUR FIRE RATED WALL

GENERAL NOTES

1. ALL FINAL LOCATIONS AND ARRANGEMENTS OF LIGHTING FIXTURES SHALL BE COORDINATED IN THE FIELD AND MUST BE APPROVED BY THE VA HOSPITAL ENGINEERING REPRESENTATIVE.
2. EACH BRANCH CIRCUIT HOMERUN SHALL HAVE NO MORE THAN THREE CIRCUITS. EACH BRANCH CIRCUIT HOMERUN SHALL HAVE A SEPARATE GREEN INSULATED EQUIPMENT GROUNDING CONDUCTOR.
3. ALL ELECTRICAL WORK SHALL BE INSTALLED IN ACCORDANCE WITH THE LATEST NATIONAL ELECTRICAL CODE, IN PARTICULAR ARTICLE #617, AND ALL APPLICABLE FEDERAL, STATE, AND LOCAL CODES.
4. ALL WIRE, CONDUIT, CONNECTORS, OUTLETS BOXES, ETC. NECESSARY TO ACHIEVE A COMPLETE ELECTRICAL INSTALLATION SHALL BE PROVIDED. WHERE AN ELECTRICAL DEVICE IS REQUIRED BY CODE BUT NOT SHOWN SHALL BE PROVIDED AS THOUGH FULLY SHOWN AND SPECIFIED.
5. NEW OPENINGS, CHASES IN WALLS, FLOORS AND PARTITIONS FOR CONDUIT, HANGERS, SUPPORTS AND OTHER EQUIPMENT IN THE EXISTING BUILDING SHALL BE PROVIDED AS REQUIRED FOR THE NEW AND REMODELED INSTALLATION. NEW OPENINGS IN EXISTING CONSTRUCTION AND THE REPAIR OF SUCH OPENINGS FOR THE ENTRANCE OF NEW EQUIPMENT INTO THE BUILDING OR FOR THE REMOVAL OF EXISTING EQUIPMENT IN THE EXISTING BUILDING SHALL BE PROVIDED BY THE CONTRACTOR.
6. NO CUTTING OF BUILDING CONSTRUCTION SHALL BE DONE WHICH MAY IN ANYWAY AFFECT THE BUILDING STRUCTURALLY OR ARCHITECTURALLY WITHOUT FIRST SECURING THE VA ENGINEERING STAFFS CONSENT AND APPROVAL.
7. NO CONDUITS SHALL BE RUN THROUGH OR SUPPORTED FROM DUCTWORK.
8. AFTER CONSTRUCTION OF NEW RENOVATED AREAS IS COMPLETED, THE CONTRACTOR SHALL LABEL REUSED AND EXISTING UNUSED CIRCUIT BREAKERS IN ALL ELECTRICAL PANELS INVOLVED. SPARES SHALL BE MARKED SPARES.
9. IT IS CALLED TO THE CONTRACTOR'S ATTENTION THAT THE ENTIRE INSTALLATION MUST BE GROUNDED IN COMPLIANCE WITH THE NATIONAL ELECTRICAL CODE. ALL DEVICES, EQUIPMENT BOXES, ETC. MUST BE CONNECTED TO A SOLID, INSULATED GREEN, COPPER GROUNDING CONDUCTOR. THIS GROUNDING CONDUCTOR MUST BE CONTINUOUS WITHOUT SPLICES FROM POINT OF ORIGIN IN PANELBOARD TO ALL BOXES AND EQUIPMENT ON EACH BRANCH CIRCUIT. VERIFY GROUNDING VALUES AND SUBMIT A TYPEWRITTEN REPORT TO THE RESIDENT ENGINEER INDICATING TESTING RESULTS OF EACH CIRCUIT AT THE COMPLETION OF THE PROJECT.
10. FURNISH, INSTALL, & PERFORM ANY & ALL NECESSARY WORK AND EQUIPMENT ON A TEMPORARY BASIS TO ASSURE UNINTERRUPTED SERVICE TO THE ELECTRICAL, FIRE ALARM, TELEPHONE AND SIGNAL/DATA SYSTEMS UNTIL NEW EQUIPMENT CAN BE INSTALLED ON A PERMANENT BASIS FOR THESE SYSTEMS. ALL OUTAGES MUST BE SCHEDULED WITH THE COR PRIOR TO ANY INTERRUPTIONS OF THESE SYSTEMS.
11. FOR SINGLE PHASE CIRCUITS, UNLESS NOTED OTHERWISE, NEW WIRING INDICATED SHALL BE 2 #12 & 1 #12 GROUND IN 3/4" CONDUIT. FOR THREE PHASE CIRCUITS, UNLESS NOTED OTHERWISE, NEW WIRING INDICATED SHALL BE 3 #12 & 1 #12 GROUND IN 3/4" CONDUIT. FOR CIRCUITS THAT REQUIRE LONG TRAVEL DISTANCES, REFER TO VOLTAGE DROP NOTE BELOW.
12. THE CONTRACTOR SHALL FIRESTOP ALL EXISTING CONCEALED AND ACCESSIBLE CONDUITS WITHIN THE LIMITS OF THE CONTRACT WORK AREA. THE CONTRACTOR SHALL FIRESTOP ALL NEW AND EXISTING CONDUITS AS PART OF THE REMODELING AND EXISTING SYSTEMS TO REMAIN. (REFER TO SPECIFICATIONS)
13. THE CONTRACTOR SHALL PROVIDE AND INSTALL APPROVED FIRE STOPPING AT ALL NEW AND EXISTING FLOOR SLAB/CEILING AND WALL PENETRATIONS WITHIN THE LIMITS OF CONTRACT WORK AREA TO MAINTAIN THE FIRE RATED CONSTRUCTION.

VOLTAGE DROP NOTE:

THE FOLLOWING LIST APPLIES TO ALL NEW BRANCH WIRING PROVIDED UNDER THIS CONTRACT. LISTS INDICATE THE NECESSARY GAUGE OF CONDUCTORS NECESSARY FOR BRANCH CIRCUITS ONE WAY FROM PANEL TO LAST OUTLET OR LIGHTING FIXTURE ON THE CIRCUIT:		
120/208V CIRCUITS	WIRE SIZE	277V CIRCUITS
0 - 100 FEET	No. 12 AWG	0 - 150 FEET
101 - 250 FEET	No. 10 AWG	151 - 350 FEET
250 - 400 FEET	No. 8 AWG	351 - 500 FEET

JULY 8, 2014 - ISSUED FOR CONSTRUCTION

Revisions

Date

CONSULTANTS:

H.F. LENZ COMPANY
MEP Engineers
1407 Sculp Avenue
Johnstown, PA 15904
Phone 814.269.9300
Fax 814.269.9301

JI DCI Joint Venture 1

A SDVSB JOINT VENTURE

1211 Delaware Ave.
Wilmington, DE 19806

Office: 302.652.4221
Cell: 302.655.0397

Drawing Title

ELECTRICAL SYMBOLS, NOTES & ABBREVIATIONS

Approved: Division Chief

Approved: Service Director

Drawing Title

PHILADELPHIA VAMC MODERNIZATION OF CART LIFTS

Building Number

2

Checked

TME

Drawn

RJD

Location

VAMC Philadelphia, Pennsylvania

Date

7-8-14

Project No.

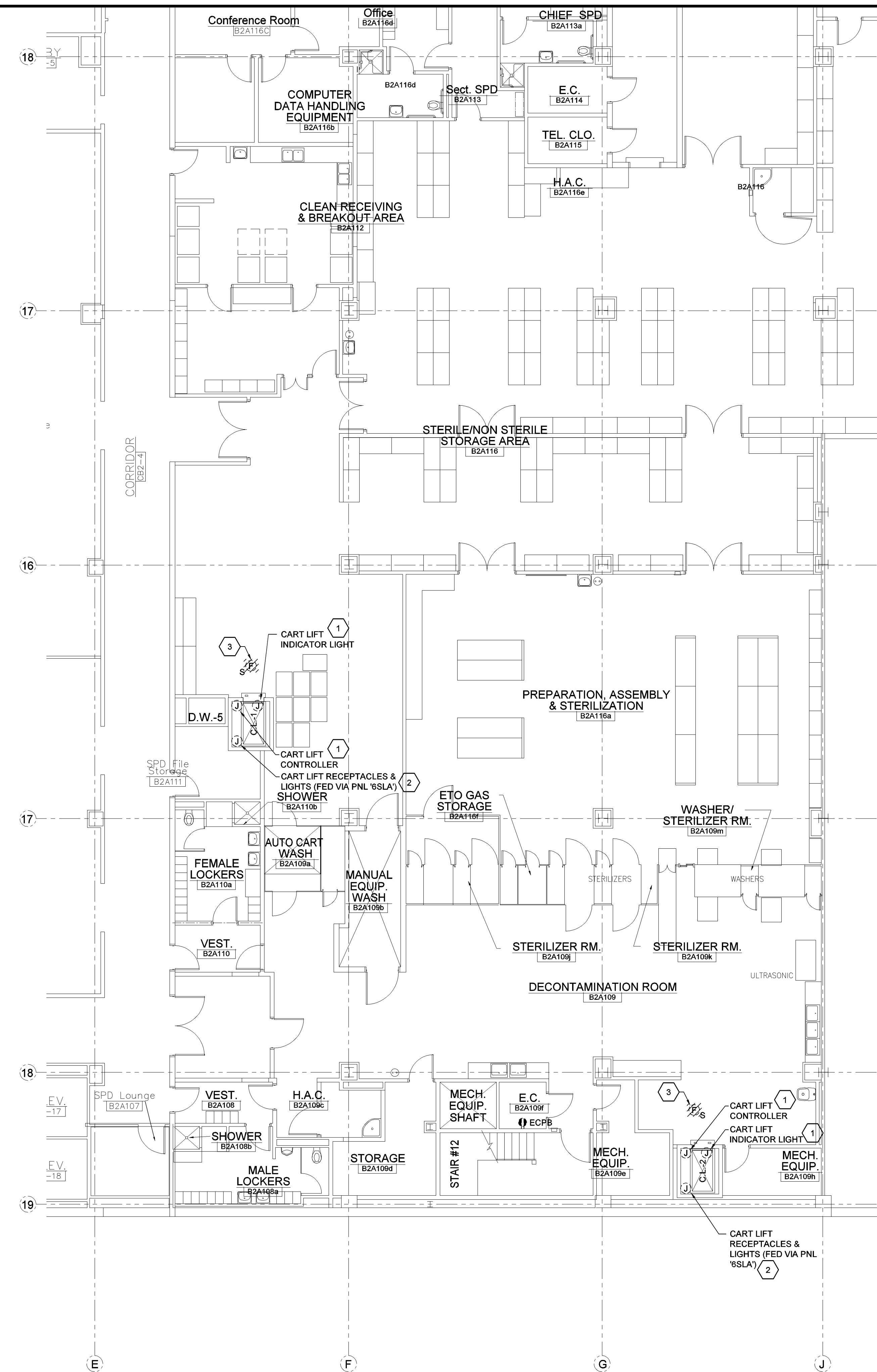
642-14-118

DRAWING NO.

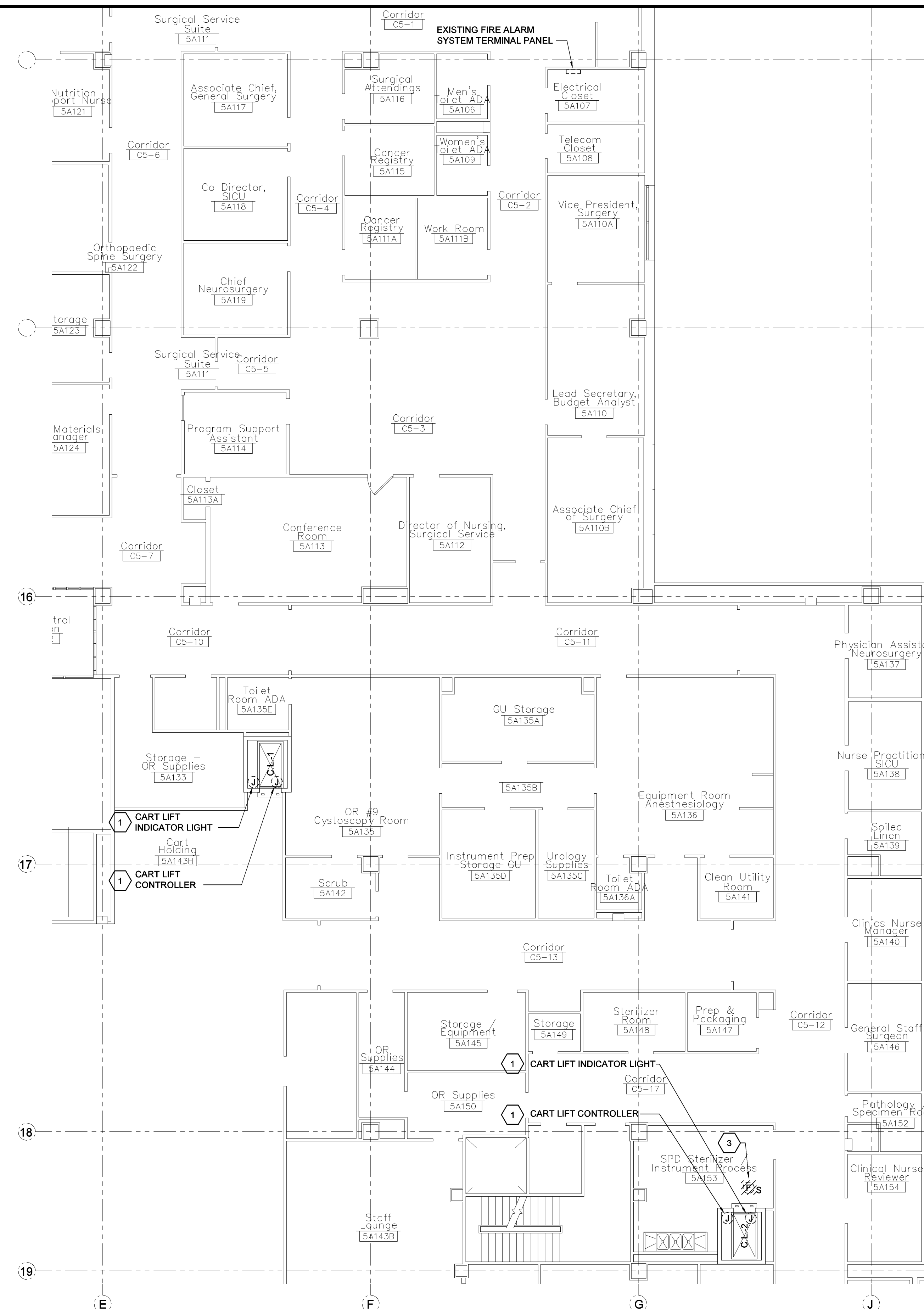
ES001

Dwg. 10 Of 16

Veterans Administration



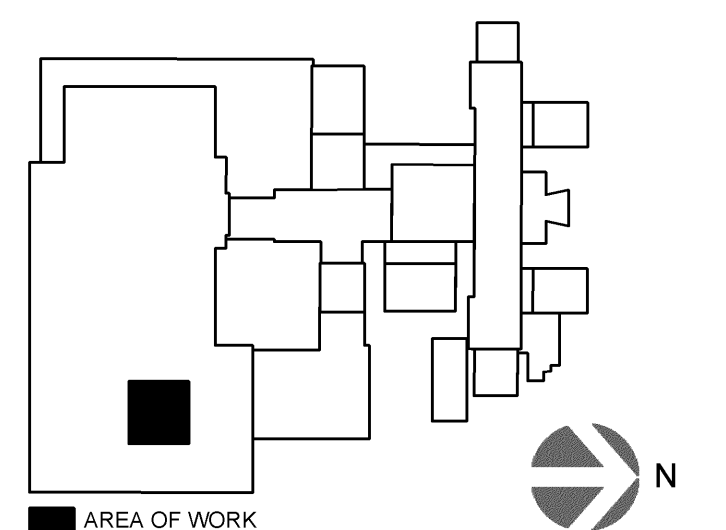
1 PARTIAL GROUND FLOOR PLAN - DEMOLITION
Scale: 1/8" = 1'-0"



2 PARTIAL FIFTH FLOOR PLAN - DEMOLITION

Scale: 1/8" = 1'-0"

- ## KEYNOTES THIS DRAWING:
- | | |
|---|---|
| 1 | WORK REQUIRED FOR CART LIFT CONTROL AND INDICATOR PANEL SHALL BE BY ELEVATOR CONTRACTOR |
| 2 | EXISTING CIRCUIT SHALL BE MODIFIED FOR CODE COMPLIANCE. SEE DRAWING ES201. |
| 3 | SHALL REMAIN DURING CONSTRUCTION, DEMOLISHED WHEN TEMPORARY ICRA WALLS (BY OTHERS) ARE REMOVED. |



JULY 8, 2014 - ISSUED FOR CONSTRUCTION

		CONSULTANTS:		<div><div>JI DCI Joint Venture 1</div><div>A SDVOSB JOINT VENTURE</div><div><div>1211 Delaware Ave. Wilmington, DE 19806</div><div><div>Office: 302.652.4221 Cell: 302.655.0397</div></div></div></div>		<div><div><div><div>COMMONWEALTH OF PENNSYLVANIA</div><div>PROFESSIONAL ENGINEER</div><div>TIMOTHY M. LECHARY</div><div>ENGINEER</div><div>REG. 0401287</div><div>PENNSYLVANIA</div></div><div><div>Signature</div></div></div></div>		<div><div><div>Drawing Title</div><div>PARTIAL ELECTRICAL GROUND & FIFTH FLOOR PLANS - DEMOLITION</div></div><div><div>Approved: Division Chief</div><div></div></div><div><div>Approved: Service Director</div><div></div></div></div>		<div><div><div>Project Title</div><div>PHILADELPHIA VAMC MODERNIZATION OF CART LIFTS</div></div><div><div>Building Number</div><div>2</div><div>Checked</div><div>TME</div><div>Drawn</div><div>RJD</div></div><div><div>Location</div><div>VAMC Philadelphia, Pennsylvania</div></div></div>		<div><div><div>Date</div><div>7-8-14</div></div><div><div>Project No.</div><div>642-14-118</div></div><div><div>DRAWING NO.</div><div>ES101</div><div>Dwg. 11 Of 16</div></div></div>	
Revisions		Date				Veterans Administration							

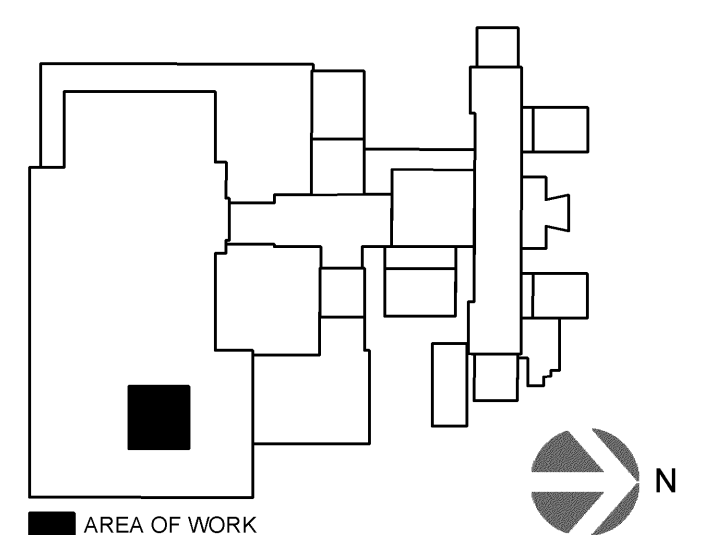
Veterans Administration

I: \CAD\2003\0124x01
one-eighth inch = one foot




PARTIAL SIXTH FLOOR PLAN - DEMOLITION

Scale: 1/8" = 1'-0"



JULY 8, 2014 - ISSUED FOR CONSTRUCTION

		CONSULTANTS:				<div>JI DCI Joint Venture 1</div> <div>A SDVOSB JOINT VENTURE</div> <div>1211 Delaware Ave. Wilmington, DE 19806</div> <div>Office: 302.652.4221 Cell: 302.655.0397</div>		<div></div>		<div><div>Drawing Title</div><div>PARTIAL ELECTRICAL SIXTH FLOOR PLAN - DEMOLITION</div><div>Approved: Division Chief</div><div>Approved: Service Director</div></div>		<div><div>Project Title</div><div>PHILADELPHIA VAMC MODERNIZATION OF CART LIFTS</div><div>Building Number 2</div><div>Location VAMC Philadelphia, Pennsylvania</div></div>		<div><div>Date</div><div>7-8-14</div><div>Project No. 642-14-118</div><div>DRAWING NO. ES102</div><div>Dwg. 12 Of 16</div></div>		<div>Veterans Administration</div>	
Revisions		Date															

Veterans Administration

I: \CAD\2003\0124x01
one-eighth inch = one foot

I:\CAD\2003\0124\01

one-eighth inch = one foot

three-eighths inch = one foot

one-half inch = one foot

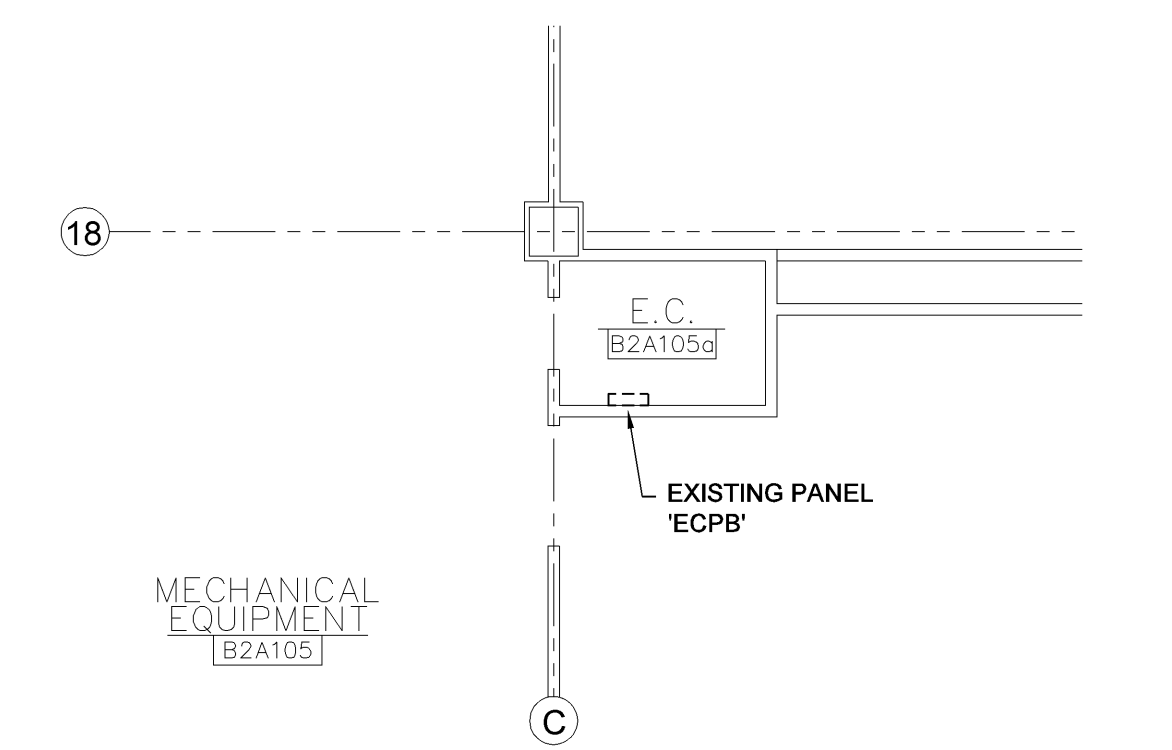
three-quarters inch = one foot

one inch = one foot

one and one-half inch = one foot

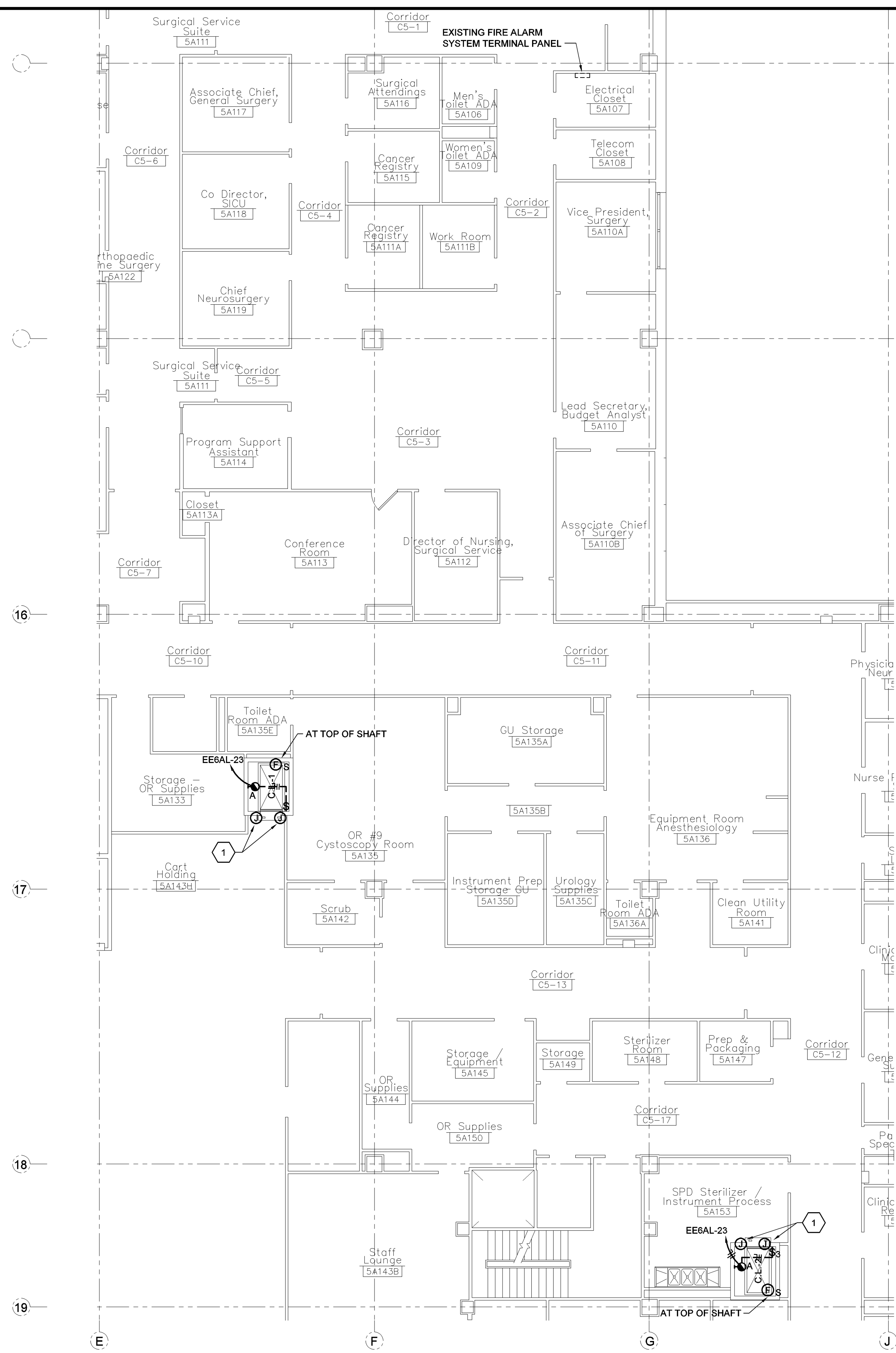
three inches = one foot

1 PARTIAL GROUND FLOOR PLAN - NEW WORK
Scale: 1/8" = 1'-0"

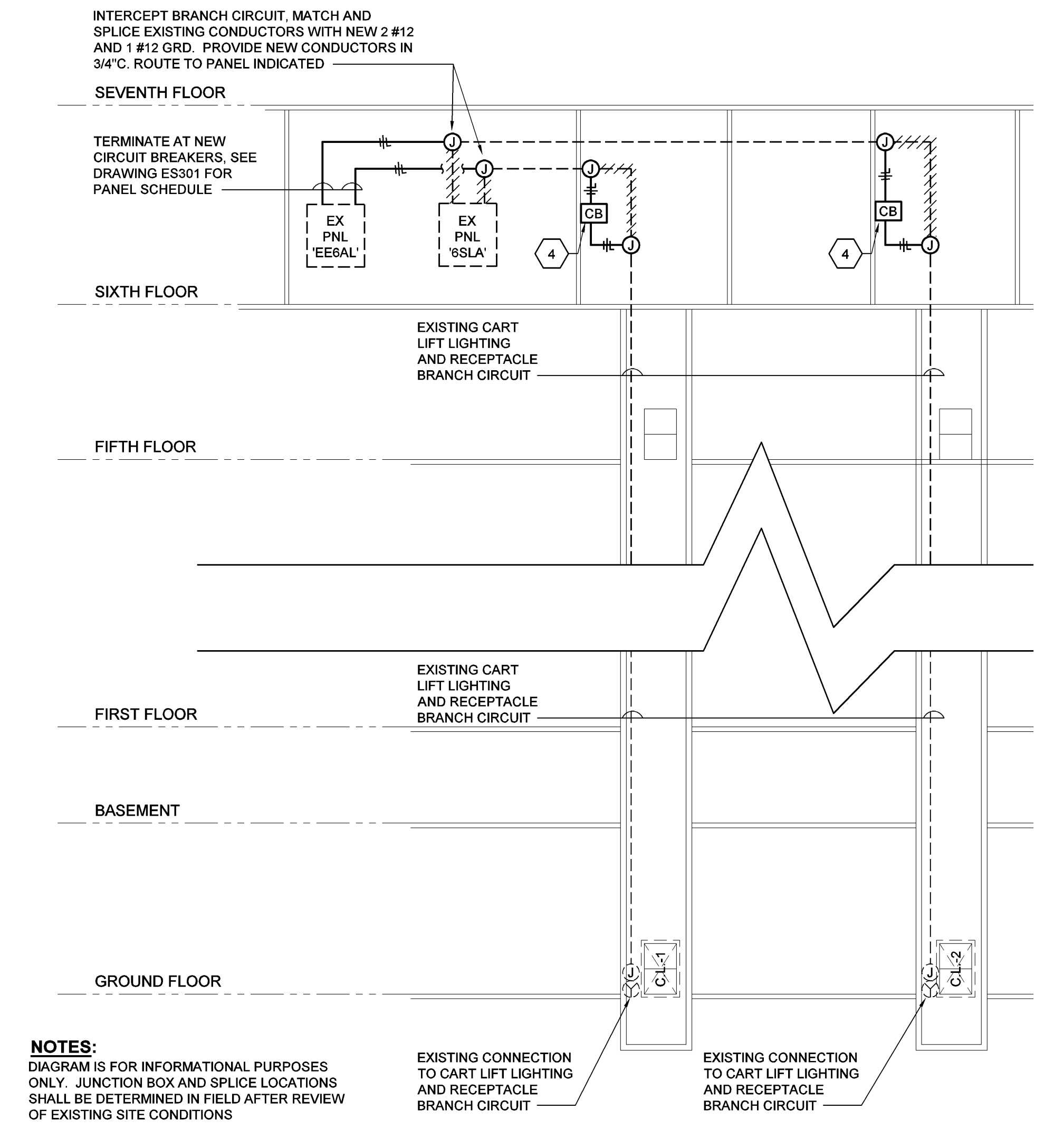


4 PARTIAL GROUND FLOOR ELECTRICAL REFERENCE PLAN
Scale: 1/8" = 1'-0"

2 PARTIAL FIFTH FLOOR PLAN - NEW WORK
Scale: 1/8" = 1'-0"



3 CART LIFT BRANCH CIRCUIT WIRING DIAGRAM
Not To Scale



- KEYNOTES ELSEWHERE THIS DRAWING**
- 1 WORK REQUIRED FOR CART LIFT CONTROL AND INDICATOR PANEL SHALL BE BY CART LIFT CONTRACTOR
 - 2 EXISTING CART LIFT LIGHTING AND RECEPTACLE BRANCH CIRCUIT, SHALL BE RE-FED FROM EXISTING NORMAL/EMERGENCY PANEL 'EE6AL'. SEE DIAGRAM THIS SHEET FOR ADDITIONAL INFORMATION.
 - 3 PROVIDE NEW SWITCH IN NEMA 4 ENCLOSURE AND AT ELEVATION 6" BELOW CART LIFT LANDING LEVEL.
 - 4 20A-1P ENCLOSED CIRCUIT BREAKER, SEE DRAWING ES202 FOR LOCATION. AS REQUIRED, MODIFY EXISTING WIRING (3 #12s IN 3/4" C) AND ROUTE BRANCH CIRCUIT THROUGH CIRCUIT BREAKER.

NOTES:
DIAGRAM IS FOR INFORMATIONAL PURPOSES ONLY. JUNCTION BOX AND SPLICE LOCATIONS SHALL BE DETERMINED IN FIELD AFTER REVIEW OF EXISTING SITE CONDITIONS

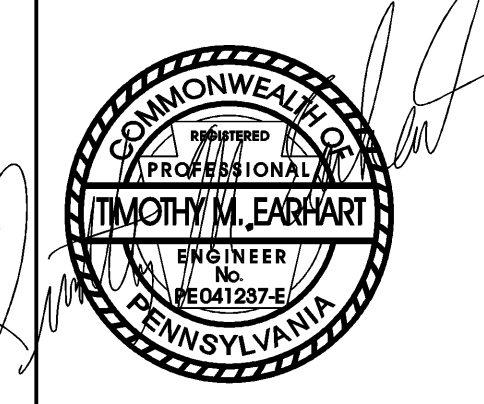
EXISTING CONNECTION TO CART LIFT LIGHTING AND RECEPTACLE BRANCH CIRCUIT

EXISTING CONNECTION TO CART LIFT LIGHTING AND RECEPTACLE BRANCH CIRCUIT

Revisions	Date

CONSULTANTS:	
H.F. LENZ COMPANY MEP Engineers 1407 Scalp Avenue Johnstown, PA 15904 Phone: 814.269.9300 Fax: 814.269.9301	

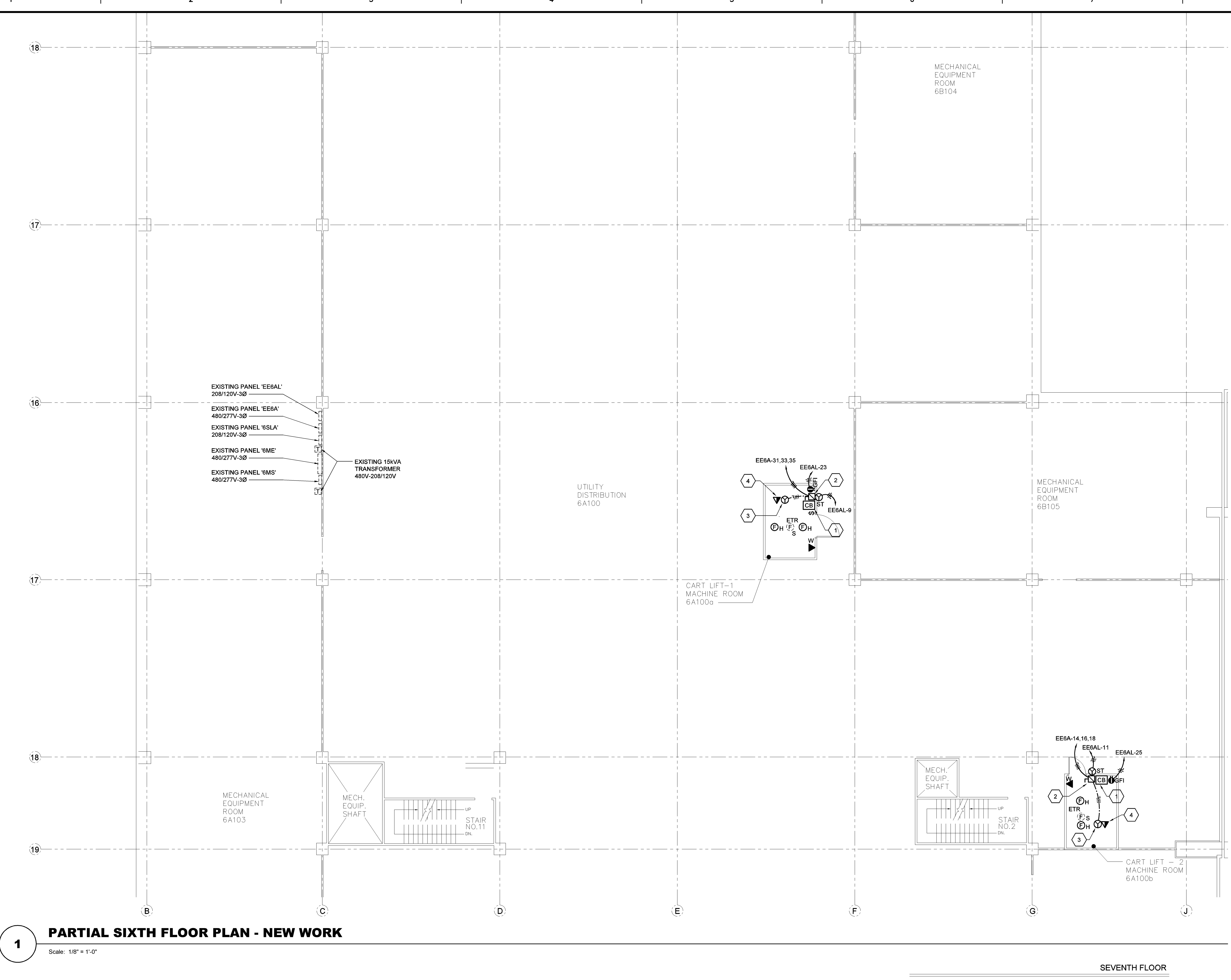
JI DCI Joint Venture 1
A SDVOSB JOINT VENTURE
1211 Delaware Ave.
Wilmington, DE 19806
Office: 302.652.4221
Cell: 302.655.0397



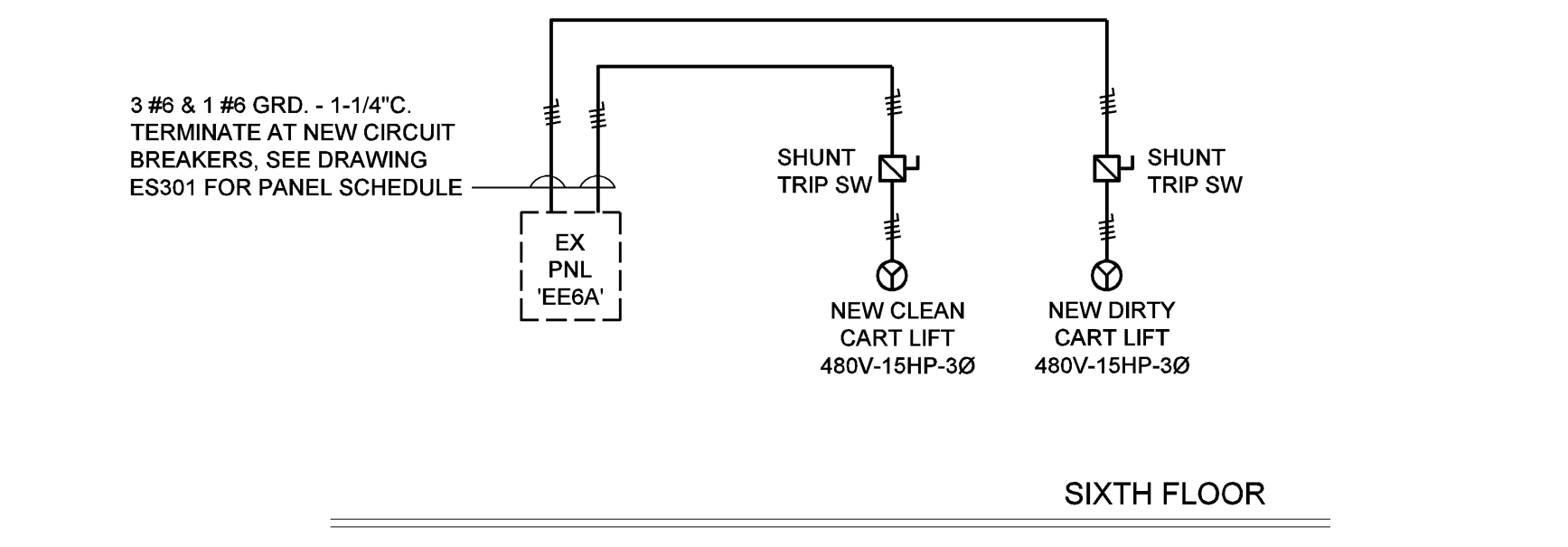
Drawing Title		Project Title		Date
ELECTRICAL PARTIAL GROUND & FIFTH FLOOR PLAN - NEW WORK		PHILADELPHIA VAMC MODERNIZATION OF CART LIFTS		7-8-14
Approved: Division Chief	Building Number 2	Checked TME	Drawn RJD	Project No. 642-14-118
Approved: Service Director	Location VAMC Philadelphia, Pennsylvania	DRAWING NO. ES201		Dwg. 13 Of 16

Veterans Administration

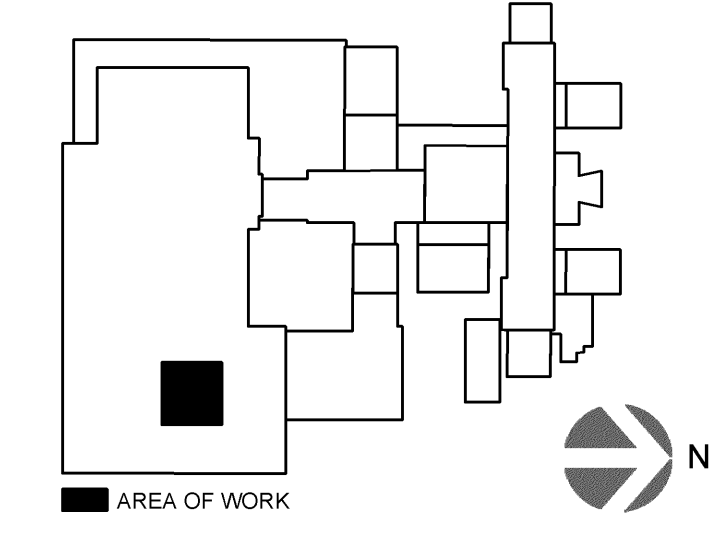
three inches = one foot
one and one-half inch = one foot
one inch = one foot
three-quarters inch = one foot
one-half inch = one foot
three-eighths inch = one foot
one-quarter inch = one foot
one-eighth inch = one foot



1 PARTIAL SIXTH FLOOR PLAN - NEW WORK
Scale: 1/8" = 1'-0"



2 PARTIAL ELECTRICAL RISER DIAGRAM
No Scale



JULY 8, 2014 - ISSUED FOR CONSTRUCTION

Revisions		Date		CONSULTANTS: H.F. LENZ COMPANY MEP Engineers 1407 Scarp Avenue Johnstown, PA 15904 Phone 814.269.9300 Fax 814.269.9301		JI DCI Joint Venture 1 A SDVSB JOINT VENTURE 1211 Delaware Ave. Wilmington, DE 19806 Office: 302.652.4221 Cell: 302.655.0397				Drawing Title		Project Title		Date		Veterans Administration				
										PARTIAL ELECTRICAL SIXTH FLOOR PLAN - NEW WORK		PHILADELPHIA VAMC MODERNIZATION OF CART LIFTS		7-8-14						
										Approved: Division Chief		Building Number 2		Checked TME			Drawn RJD		Project No. 642-14-118	
										Approved: Service Director		Location VAMC Philadelphia, Pennsylvania		DRAWING NO. ES202			Dwg. 14 Of 16			

1
2
3
4
5
6
7
8
9

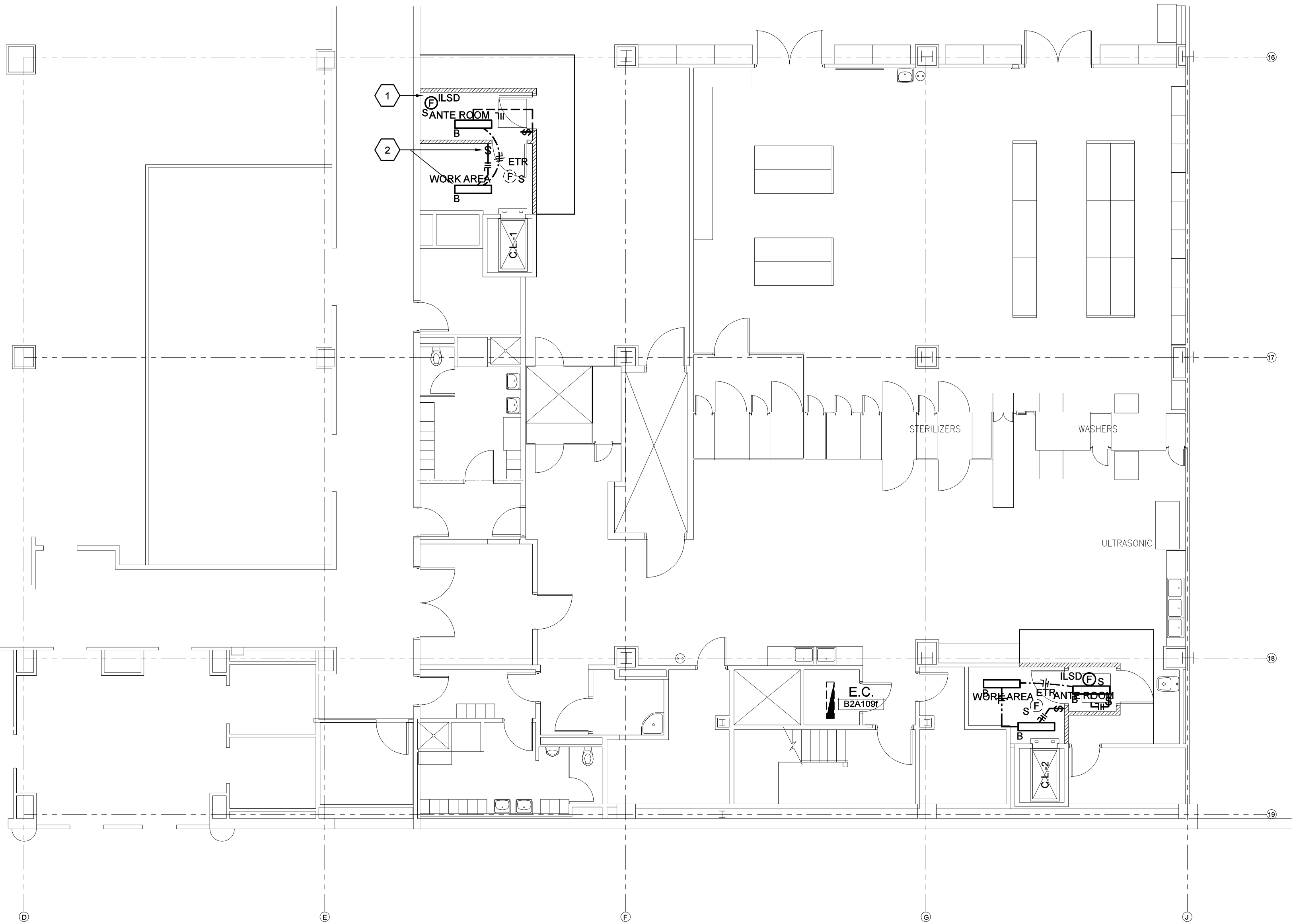
A
B
C
D
E
F

three inches = one foot
one and one-half inch = one foot
one inch = one foot
three-quarters inch = one foot
one-half inch = one foot
three-eighths inch = one foot
one-quarter inch = one foot
one-eighth inch = one foot

1
2
3
4
5
6
7
8
9

A
B
C
D
E
F

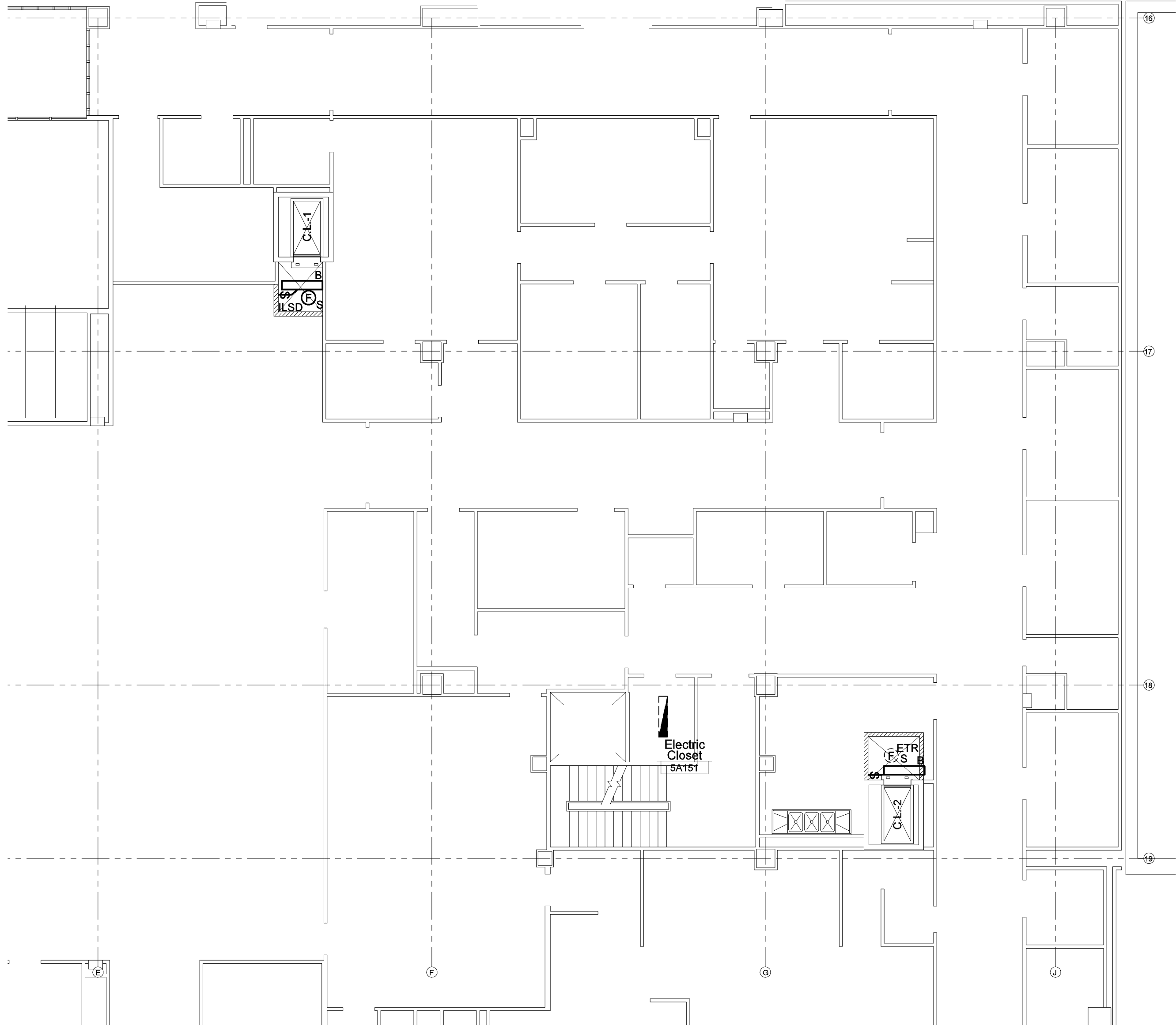
three inches = one foot
one and one-half inch = one foot
one inch = one foot
three-quarters inch = one foot
one-half inch = one foot
three-eighths inch = one foot
one-quarter inch = one foot
one-eighth inch = one foot



1 **PARTIAL GROUND FLOOR PLAN - TEMPORARY WORK**
Scale: 1/8" = 1'-0"

KEYNOTES THIS DRAWING:

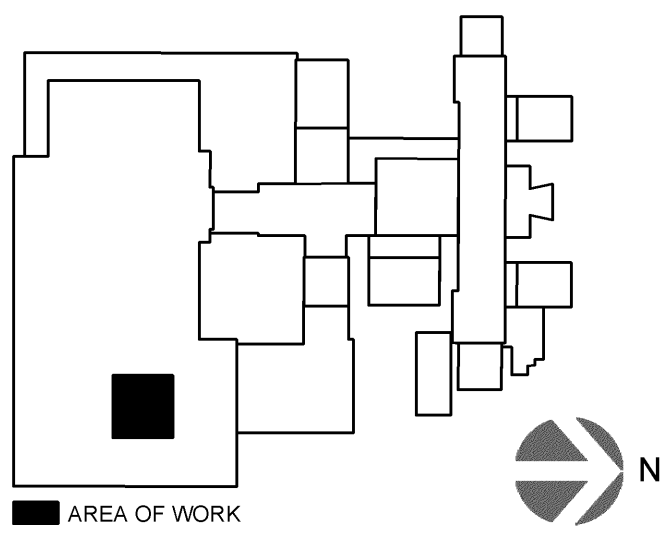
- 1 PROVIDE NEW INTERIM LIFE SAFETY SMOKE DETECTOR DEVICE, CONNECT TO NEAREST SMOKE DETECTOR CIRCUIT
- 2 PROVIDE NEW ICRA SPACE LIGHT FIXTURES AND TOGGLE SWITCH, CONNECT TO EXISTING LIGHTING CIRCUIT WITHIN ELECTRICAL ROOMS INDICATED (TYPICAL FOR ALL NEW LIGHTING DEVICES SHOWN ON THIS PLAN)



2 **PARTIAL FIFTH FLOOR PLAN - TEMPORARY WORK**
Scale: 1/8" = 1'-0"

GENERAL NOTES:

1. WORK SHOWN ON THIS DRAWING IS TEMPORARY IN NATURE AND SHALL BE REMOVED ONCE THE ICRA BARRIERS ARE NO LONGER REQUIRED.
2. COORDINATE WITH GC ON EXACT ELECTRICAL CHARACTERISTICS REQUIRED FOR HEPA FAN. EC SHALL PROVIDE ALL NECESSARY TEMPORARY SUPPORTS, CONNECTORS, DISCONNECTS, ETC. TO PROVIDE POWER TO FAN. CONNECT INTO EXISTING ROOM RECEPTACLE CIRCUIT.
3. COORDINATE ALL WORK IN NON-CONSTRUCTION SPACES WITH GC AND ICRA PLANS



JULY 8, 2014 - ISSUED FOR CONSTRUCTION

<div>Revisions</div> <div>Date</div>		<div>CONSULTANTS:</div> <div>H.F. LENZ COMPANY</div> <div>MEP Engineers</div> <div>1407 Scarp Avenue</div> <div>Johnstown, PA 15904</div> <div>Phone: 814.269.9300</div> <div>Fax: 814.269.9301</div>		<div>JI DCI Joint Venture 1</div> <div>A SDVOSB JOINT VENTURE</div> <div>1211 Delaware Ave.</div> <div>Wilmington, DE 19806</div> <div>Office: 302.652.4221</div> <div>Cell: 302.655.0397</div>		<div></div>		Drawing Title		Project Title		Date	
								PARTIAL ELECTRICAL FLOOR PLANS - TEMPORARY WORK		PHILADELPHIA VAMC MODERNIZATION OF CART LIFTS		7-8-14	
Approved: Division Chief		Building Number		Checked		Drawn		Approved: Service Director		Location		DRAWING NO.	
		2		TME		RJD				VAMC Philadelphia, Pennsylvania		ES203	
												Dwg. 15 Of 16	

Veterans Administration

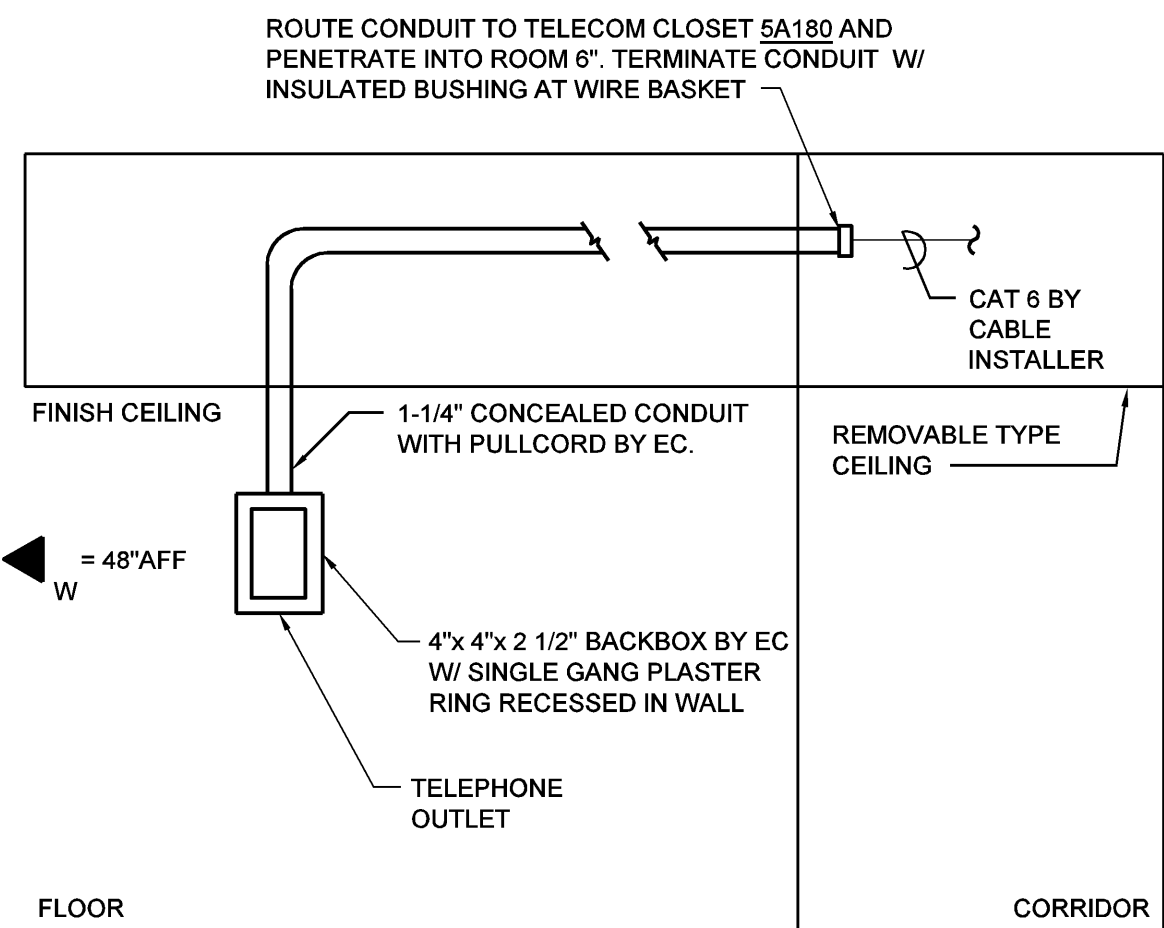
LIGHTING FIXTURE SCHEDULE							
SYMBOL	DESCRIPTION	MANUFACTURER	CATALOG NUMBER	VOLTAGE	LAMPS	MOUNTING	FOOTNOTES
A	13" ROUND, MARINE GRADE, LED SURFACE MOUNTED LOW PROFILE LIGHT FIXTURE W/ INTEGRAL HEAT SINKS, FLANGED INTERLOCKING HOUSING, HIGH IMPACT RESISTANT ACRYLIC LENS, AND SELF ADHESIVE GASKETING SEAL	KENALL OR APPROVED EQUAL	MR13FFL PP MB 20L50K SCC DV	120/277	20W 5000K LEDs	WALL/ SURFACE	IP 64 RATING
B	NARROW BODY, INJECTION MOLDED, 4'-0" STEEL WRAP AROUND W/ T8 LAMPS & ONE ELECTRONIC BALLAST	H.E. WILLIAMS LUMAX METALUX COLUMBIA	21-4-232-I (SEE SPEC)-UNV WA 232 48 (SEE SPEC) 9 SA WBI 232 IMA UNV (SEE SPEC) MWN4-232-I (SEE SPEC) U	120/277	2-32W T8	SURFACE	APPROX 9'-11" WIDE

GENERAL LIGHTING NOTES


1. FIXTURES SHALL BE DESIGNED, ARRANGED, FURNISHED AND INSTALLED COMPLETE WITH ALL ACCESSORIES FOR MOUNTING ON PLASTER CONSTRUCTION
2. ALL WORK SHALL BE COORDINATED WITH THE GENERAL CONTRACTOR, INCLUDING ALL DIMENSIONS.
3. LIGHTING FIXTURES SHALL BE FURNISHED FOR THE BRANCH CIRCUIT VOLTAGE INDICATED ON THE CONTRACT DOCUMENTS.
4. COLOR AND FINISH OF ALL LIGHTING FIXTURES AND COMPONENTS SHALL BE AS DIRECTED BY THE ARCHITECT.
5. ALL FIXTURES SHALL BE PAINTED AFTER FABRICATION

EXISTING PANEL EE6A					EMERGENCY EQUIPMENT	
MAIN 225 MLO		VOLTAGE 480 /277V		MOUNTING WALL		
BUSING 225 AMPS		3-Ph 4-W				
SCR EXISTING AIC						
NO	DESCRIPTION	CB/P	CB/P	DESCRIPTION	NO	
1	-	-	-	-	2	
3	EXISTING FAN - RAF-25	20/3	90/3	EXISTING ENERGY RECOVERY UNIT	4	
5	-	-	-	-	6	
7	-	-	-	-	8	
9	EXISTING FAN - AC-25	60/3	70/3	SPARE	10	
11	-	-	-	-	12	
13	-	-	-	-	14	
15	EXISTING FAN - AC-27	50/3	40/3	NEW DIRTY CART LIFT (CL-2)	16	
17	-	-	-	-	18	
19	-	-	-	-	20	
21	EX. XFRM FOR PANEL 'EE6AL'	20/3	50/3	EXISTING ENERGY RECOVERY UNIT	22	
23	-	-	-	-	24	
25	-	-	-	-	26	
27	EXISTING FAN - RAF-27	20/3	35/3	EX. ANGIO SUITE MECH EQUIPMENT	28	
29	-	-	-	-	30	
31	-	-	-	-	32	
33	NEW CLEAN CART LIFT (CL-1)	40/3	100/3	EXISTING FAN - SF-23	34	
35	-	-	-	-	36	
37	-	-	-	-	38	
39	EX. ANGIO SUITE MECH EQUIPMENT	45/3	100/3	EXISTING FAN - SF-24	40	
41	-	-	-	-	42	
SQUARE D MANUFACTURED PANEL, PROVIDE NEW BREAKER FOR NEW LOADS INDICATED						

EXISITING PANEL EE6AL					EMERGENCY EQUIPMENT	
MAIN 60 MCB		VOLTAGE 208 /120V		MOUNTING WALL		
BUSING 60 AMPS		3-Ph 4-W				
SCR EXISTING AIC						
NO	DESCRIPTION	CB/P	CB/P	DESCRIPTION	NO	
1	ACTIVE	20/1	20/1	ACTIVE	2	
3	ACTIVE	20/1	20/1	ACTIVE	4	
5	ACTIVE	20/1	20/1	ACTIVE	6	
7	ACTIVE	20/1	-	-	8	
9	SHUNT TRIP FOR CLEAN CART	20/1	15/3	ACTIVE	10	
11	SHUNT TRIP FOR DIRTY CART	20/1	-	-	12	
13	SPACE	-	-	-	14	
15	SPACE	-	15/3	ACTIVE	16	
17	ACTIVE	20/1	-	-	18	
19	ACTIVE	20/1	20/1	ACTIVE	20	
21	ACTIVE	20/1	-	SPACE	22	
23	NEW CLEAN CART SHAFT LIGHTING	20/1	-	SPACE	24	
25	NEW DIRTY CART SHAFT LIGHTING	20/1	-	SPACE	26	
27	NEW CLEAN CART CAR LIGHTING	20/1	-	SPACE	28	
29	NEW DIRTY CART CAR LIGHTING	20/1	-	SPACE	30	
NOTES:						
1) PANEL IS MANUFACTURED BY EATON, TYPE 'PR11A'.						
2) PROVIDE NEW BREAKER IN SPARE SPACE FOR INDICATED LOADS						

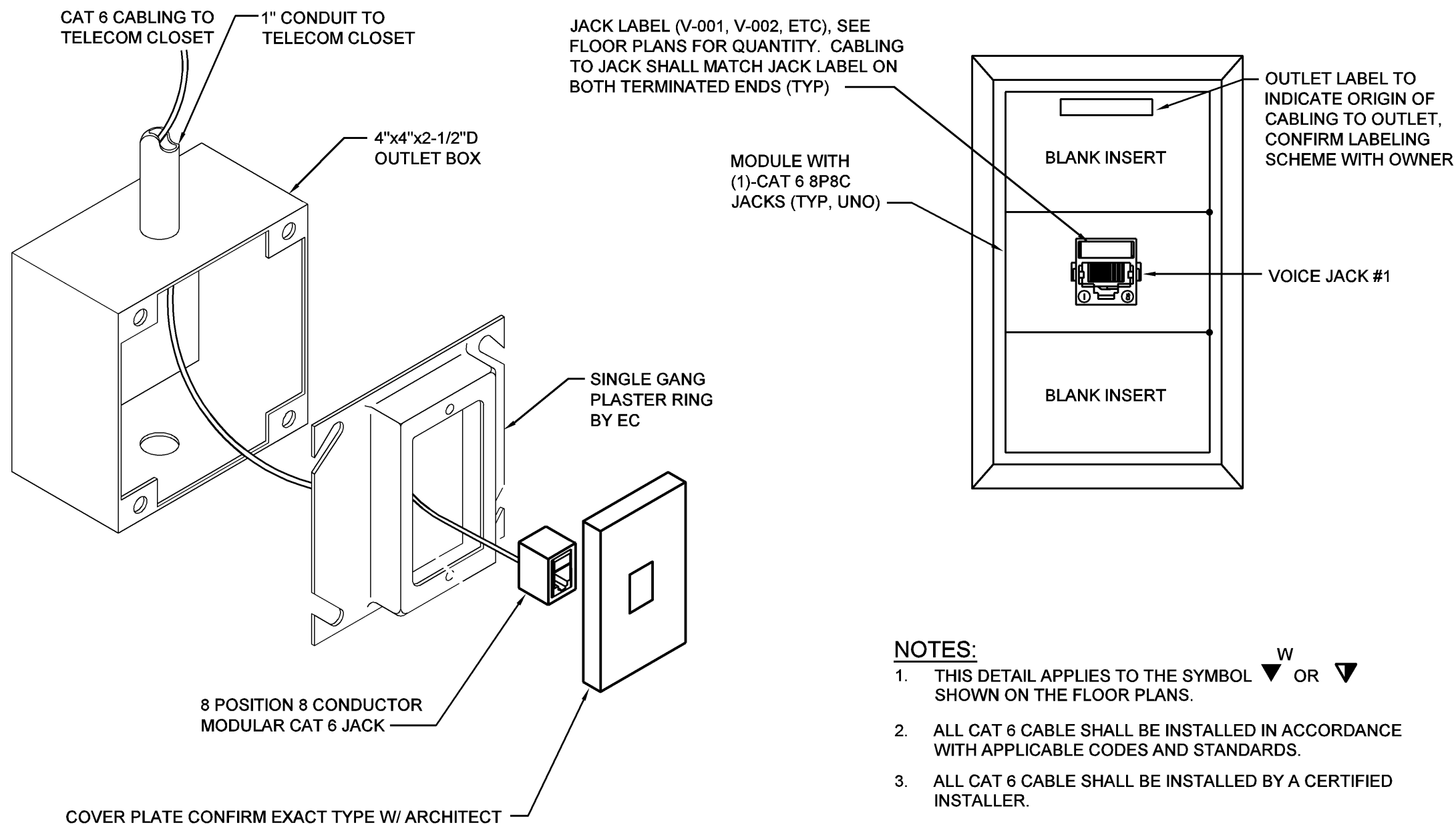


NOTES:



1. THIS DETAIL APPLIES TO THE SYMBOL  SHOWN ON THE FLOOR PLANS.
2. PROVIDE 20' SLACK CABLE INSIDE TELECOM CLOSET FOR TERMINATIONS BY OTHERS

WALL TELEPHONE ELEVATION DETAIL

NO SCALE

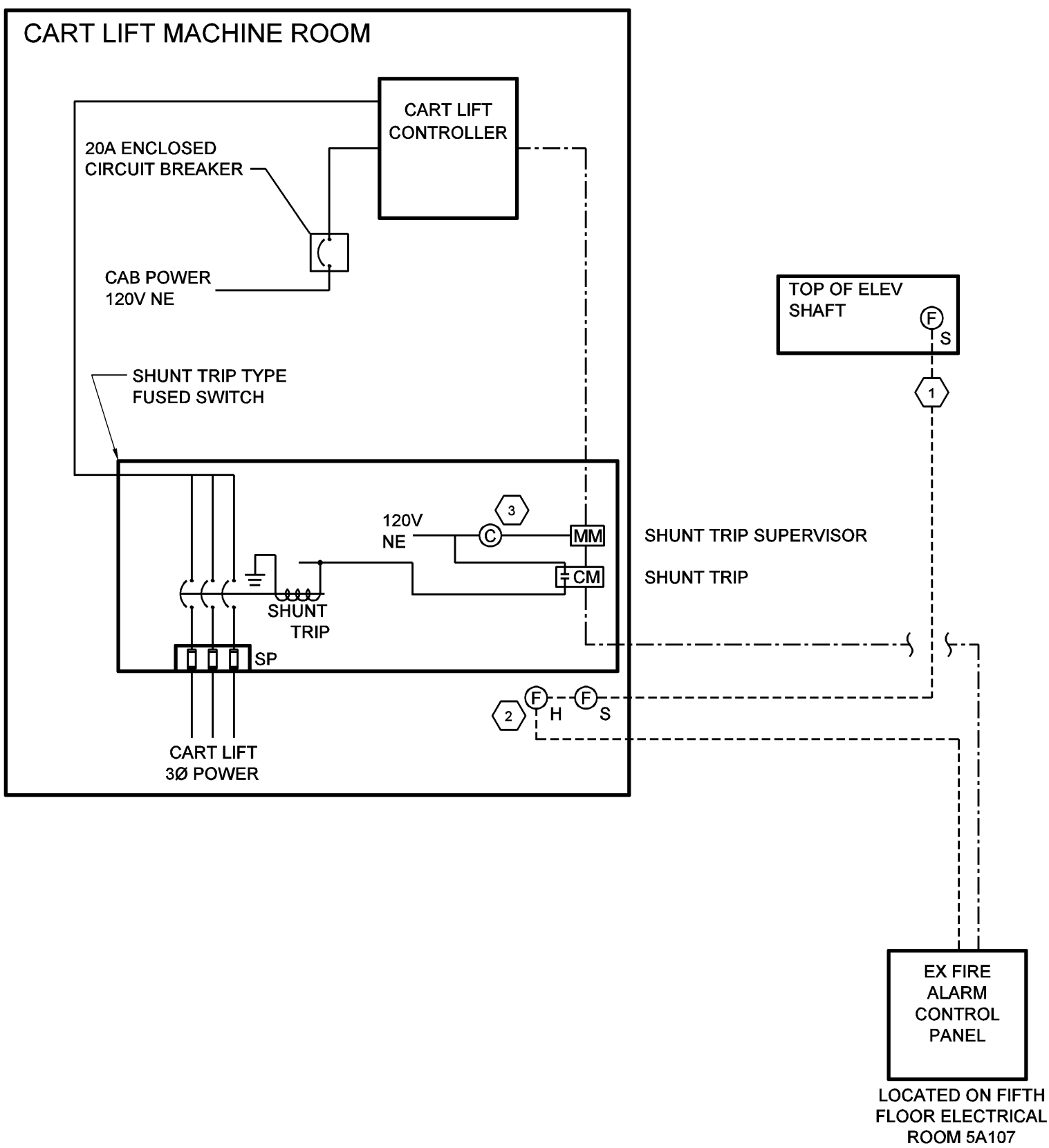


NOTES:

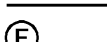



1. THIS DETAIL APPLIES TO THE SYMBOL  OR  SHOWN ON THE FLOOR PLANS.
2. ALL CAT 6 CABLE SHALL BE INSTALLED IN ACCORDANCE WITH APPLICABLE CODES AND STANDARDS.
3. ALL CAT 6 CABLE SHALL BE INSTALLED BY A CERTIFIED INSTALLER.
4. THIS DETAIL IS INTENDED TO ILLUSTRATE THE INTENT OF THE DATA HORIZONTAL WIRING AND DATA OUTLET CONFIGURATION ONLY. ACTUAL REQUIREMENTS AND CONDITIONS MAY VARY. IT SHALL BE THE RESPONSIBILITY OF THE ELECTRICAL CONTRACTOR TO VERIFY SITE CONDITIONS & COORDINATE INSTALLATION REQUIREMENTS WITH OWNER & ARCHITECT.

SINGLE TELECOMMUNICATIONS OUTLET DETAIL

NO SCALE



LEGEND:

-  135° ADDRESSABLE FIRE ALARM HEAT DETECTOR
-  ADDRESSABLE FIRE ALARM PHOTOELECTRIC SMOKE DETECTOR
-  ADDRESSABLE MODULE TO PROVIDE RELAYING FOR SHUNT TRIP.
-  ADDRESSABLE MONITOR MODULE TO PROVIDE NOTIFICATION IF SHUNT TRIP CIRCUIT IS DE-ENERGIZED
- FA WIRING
- SIGNAL WIRING
- POWER WIRING

GENERAL NOTES:

1. REFER TO FLOOR PLANS FOR INFORMATION ON FEEDER AND BRANCH CIRCUITS.
2. PROVIDE REMOVABLE, 600V-200KA SYM SURGE PROTECTIVE FUSES (SP) PROVIDED WITHIN BUT WIRED ELECTRICALLY BEFORE DISCONNECT SWITCH.

NOTES ELSEWHERE:

- 1) TYPICAL SMOKE DETECTOR AND/OR HEAT DETECTOR WIRING TO FIRE ALARM PANEL FOR NOTIFICATION.
- 2) HEAT DETECTORS SET AT 135° F. LOCATED WHERE INDICATED ON FLOOR PLANS SHALL PROVIDE SHUNT TRIPPING ON THE CART LIFT POWER DISCONNECT SERVING THE CART LIFT. A TIME DELAY SHALL BE PROGRAMMED TO ALLOW THE CART LIFT TO RECALL FROM THE FURTHEST POINT OF TRAVEL PRIOR TO THE SHUNT TRIP UNLESS THE RECALL IS DONE WITH RECALL BATTERIES. REFER TO REQUIREMENTS OF NFPA 72. HEAT DETECTORS MUST BE MOUNTED WITHIN TWO FEET (2') OF THE SPRINKLER HEADS.
- 3) PROVIDE NORMALLY OPEN RELAY TO SUPERVISE SHUNT TRIP POWER SOURCE AND ANNUNCIATE TROUBLE ALARM UPON LOSS OF POWER AS PER NFPA 72 3-9.4.4

CART LIFT WIRING DETAIL

NOT TO SCALE

Revisions		Date		CONSULTANTS:		H.F. LENZ COMPANY MEP Engineers 1407 Scalp Avenue Johnstown, PA 15904 Phone 814.269.9300 Fax 814.269.9301		JI DCI Joint Venture 1 A SDVOSB JOINT VENTURE 1211 Delaware Ave. Wilmington, DE 19806 Office: 302.652.4221 Cell: 302.655.0397		Drawing Title ELECTRICAL DETAILS AND SCHEDULES Approved: Division Chief Approved: Service Director		Project Title PHILADELPHIA VAMC MODERNIZATION OF CART LIFTS Building Number 2 Checked TME Drawn RJD Location VAMC Philadelphia, Pennsylvania		Date 7-8-14 Project No. 642-14-118 DRAWING NO. ES301 Dwg. 16 Of 16		JULY 8, 2014 - ISSUED FOR CONSTRUCTION		Veterans Administration	
-----------	--	------	--	--------------	--	--	--	--	--	---	--	---	--	--	--	--	--	-------------------------	--