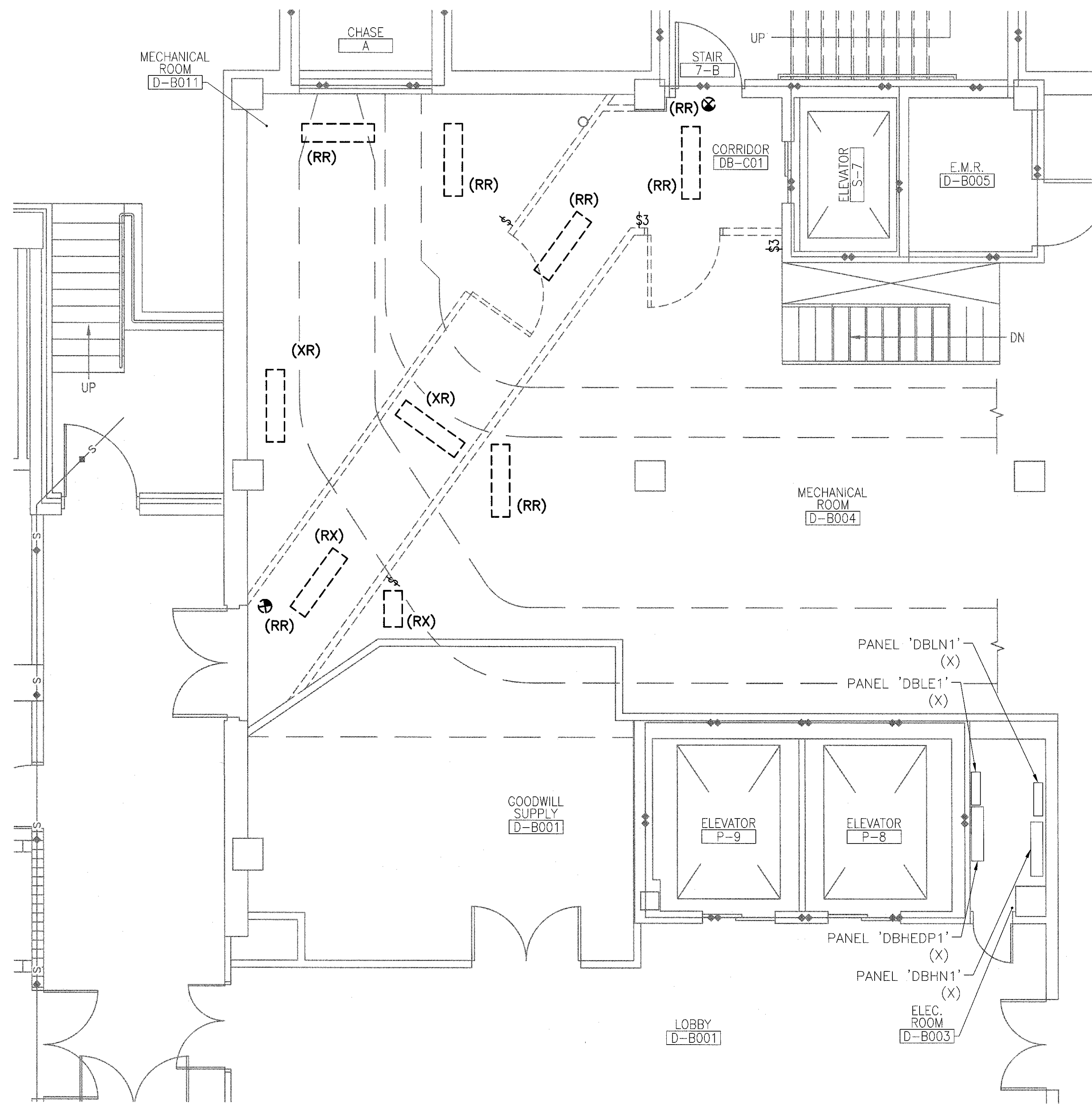
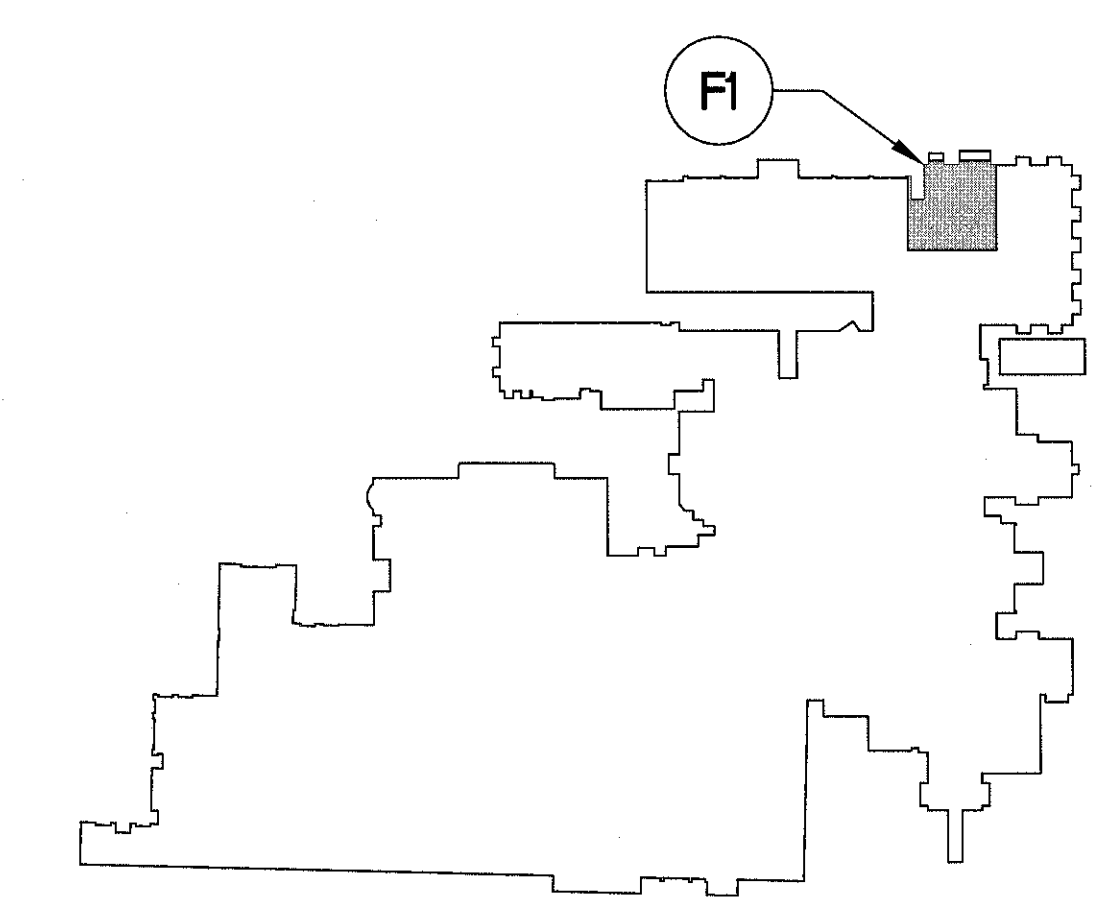


three inches = one foot  
one and one half inches = one foot  
one inch = one foot  
three quarters inch = one foot  
one half inch = one foot  
three eighths inch = one foot  
one quarter inch = one foot  
one eighth inch = one foot



**FI PARTIAL BASEMENT PLAN - DEMOLITION**  
SCALE: 1/4" = 1'-0"

- NOTES:**
- A. REFER TO SHEET E-001 FOR LEGEND, ABBREVIATIONS, AND GENERAL NOTES.
  - B. ALL EQUIPMENT IS EXISTING TO REMAIN UNLESS DENOTED AS NEW OR DESIGNATED TO BE REPLACED OR ALTERED (REFER TO KEY NOTES). ALL ITEMS SHOWN WITH DASHED LINES ARE TO BE REMOVED. REFER TO SPECIFICATIONS.
  - C. CARE SHOULD BE TAKEN BY ALL CONTRACTORS TO AVOID DAMAGING OR DISTURBING EXISTING CONSTRUCTION. CONTRACTORS SHALL BE RESPONSIBLE FOR MAKING ANY REPAIRS NECESSARY TO RECTIFY DAMAGE AND RESTORE EXISTING CONSTRUCTION TO UNDAMAGED STATE UPON COMPLETION OF WORK AT NO EXPENSE TO OWNER.
  - D. ALL CONTRACTORS SHALL THOROUGHLY FAMILIARIZE THEMSELVES WITH ALL PROJECT DRAWINGS AND DETAILS PRIOR TO BEGINNING CONSTRUCTION FOR COORDINATION OF ALL DEMOLITION WORK FOR EACH RESPECTIVE TRADE.
  - E. UNLESS NOTED, OR OTHERWISE SHOWN OR SPECIFIED, ALL MATERIALS AND EQUIPMENT REMOVED OR DEMOLISHED (EXCEPT THAT WHICH IS TO BE SALVAGED OR RELOCATED) AS DIRECTED BY DRAWINGS AND SPECIFICATIONS SHALL BECOME THE PROPERTY OF THE CONTRACTOR AND SHALL BE DISPOSED OF LEGALLY.
  - F. CONTRACTOR SHALL VISIT THE SITE TO DETERMINE THE SCOPE OF ELECTRICAL DEMOLITION WORK.
  - G. COORDINATE ALL DEMOLITION OPERATIONS WITH THE 01 00 00 SPECIFICATION AND THE OWNER AND PROCURE PRIOR APPROVAL FOR ALL DEMOLITION PROCEDURES, INCLUDING: USE OF BUILDING FACILITIES, PLACEMENT OF DUMPSTERS, REFUSE REMOVAL, AND PHASING.
  - H. AFTER DEMOLITION, ALL ABANDONED PENETRATIONS SHALL BE PATCHED AND FIRE PROTECTED ACCORDING TO CODE AND SPECIFICATIONS. ALL FIRESTOPPING PRODUCTS AND SYSTEMS SHALL BE AS MANUFACTURED BY HILTI. NO EXCEPTIONS.
  - I. RENOVATION NOTATIONS:
    - (R) LOCATION OF RELOCATED DEVICE OR EQUIPMENT
    - (RR) REMOVE AND RELOCATE EXISTING DEVICE OR EQUIPMENT
    - (RX) REMOVE EXISTING DEVICE OR EQUIPMENT
    - (X) EXISTING DEVICE OR EQUIPMENT TO REMAIN
    - (XR) EXISTING DEVICE OR EQUIPMENT TO BE REMOVED AND REPLACED AT SAME LOCATION



**KEY PLAN**  
NOT TO SCALE

<b>CONSULTANTS:</b>			<b>ARCHITECT/ENGINEERS:</b>		<b>Drawing Title</b> ELECTRICAL DEMOLITION LIGHTING PLAN		<b>Project Title</b> REPLACE FIRE PUMP BUILDING 1		<b>Project Number</b> 583-13-121		<b>Office of Construction and Facilities Management</b> 
			 200 Envoy Circle #201, Louisville KY 40299 - PH: 502.339.8511 - www.paradigmusa.com		<b>Approved Project Director</b>		<b>Location</b> RICHARD L. ROUDEBUSH VAMC 1481 W 10TH STREET, INDIANAPOLIS IN 46202		<b>Building Number</b> 1		
<b>Revisions:</b>						<b>Date</b> 12-2-2014		<b>Checked</b> BAM	<b>Drawn</b> BAM		