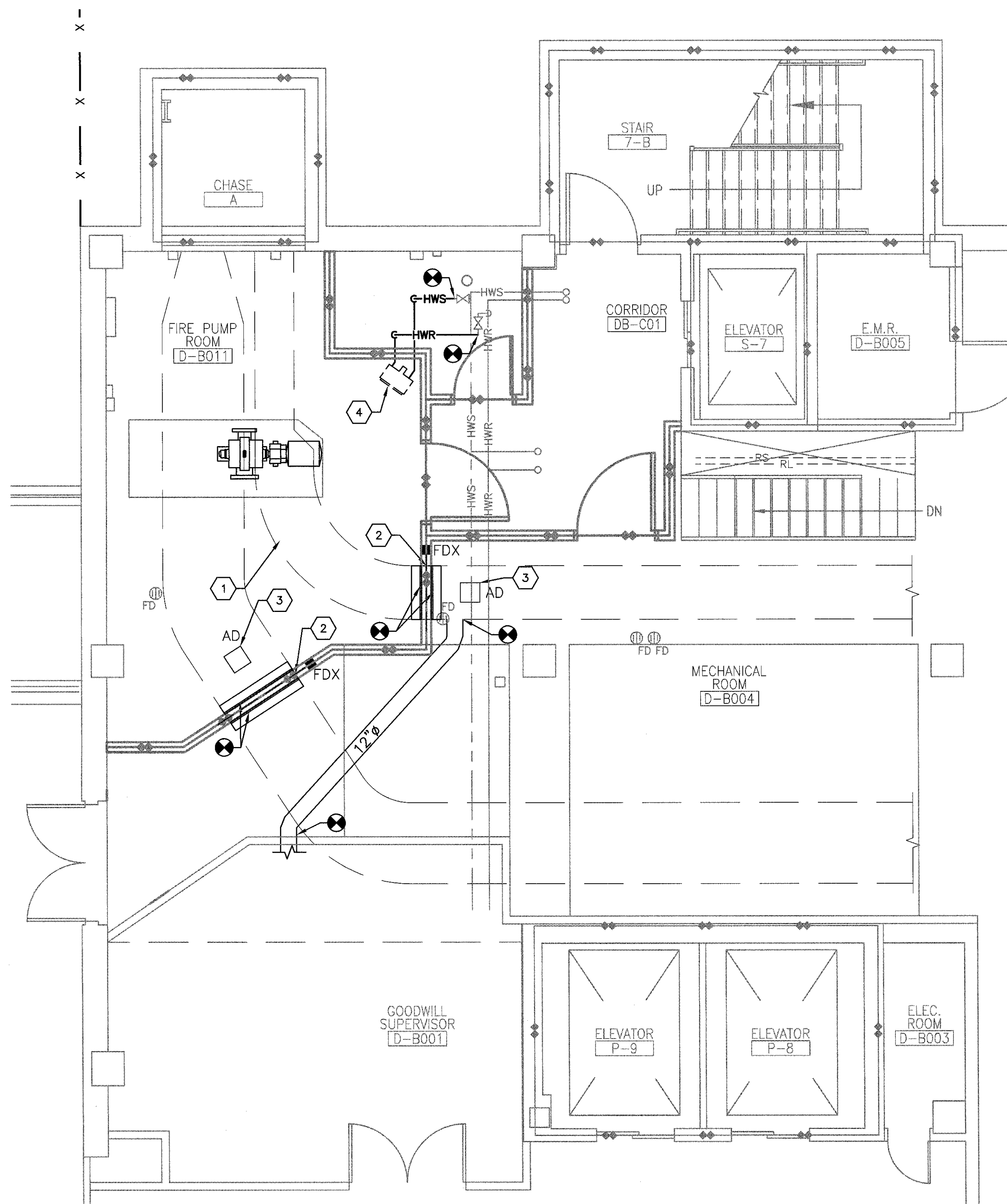
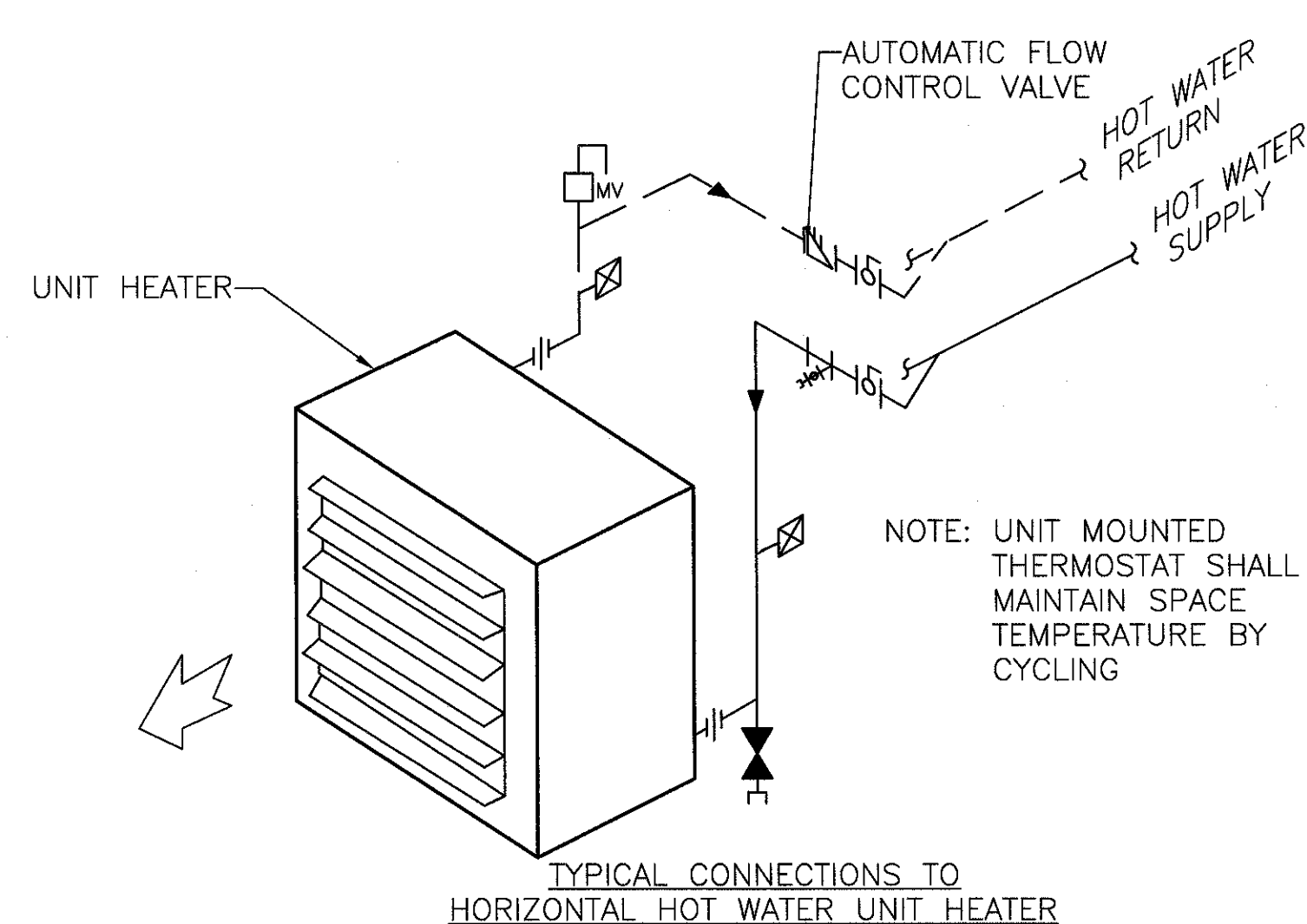


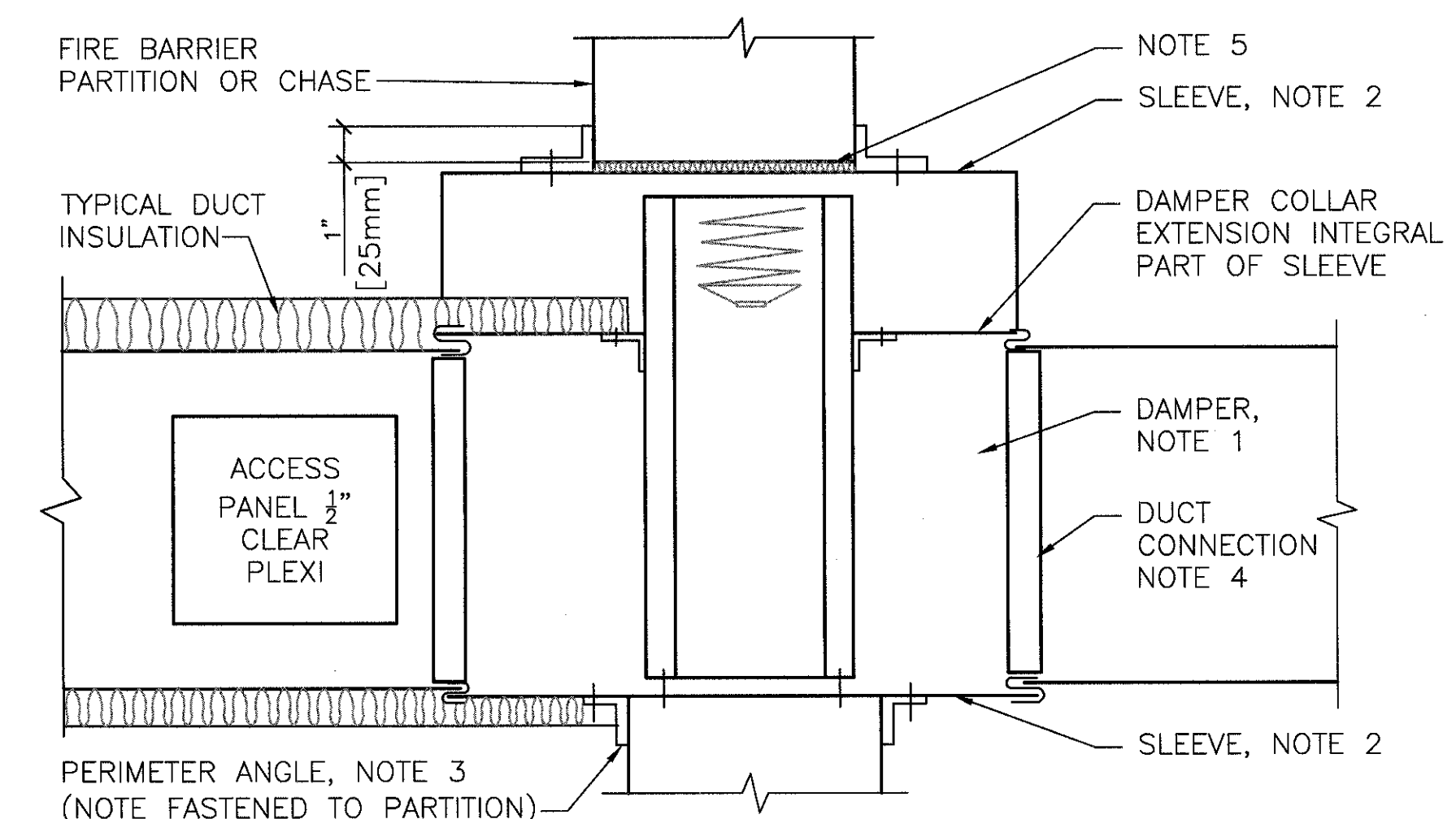
three inches = one foot
one and one half inches = one foot
one inch = one foot
three quarters inch = one foot
one half inch = one foot
three eighths inch = one foot
one quarter inch = one foot
one eighth inch = one foot



D1 PARTIAL BASEMENT PLAN - NEW WORK
SCALE 1/4" = 1'-0"



F1 UNIT HEATER - HOT WATER PIPING CONNECTIONS
NOT TO SCALE

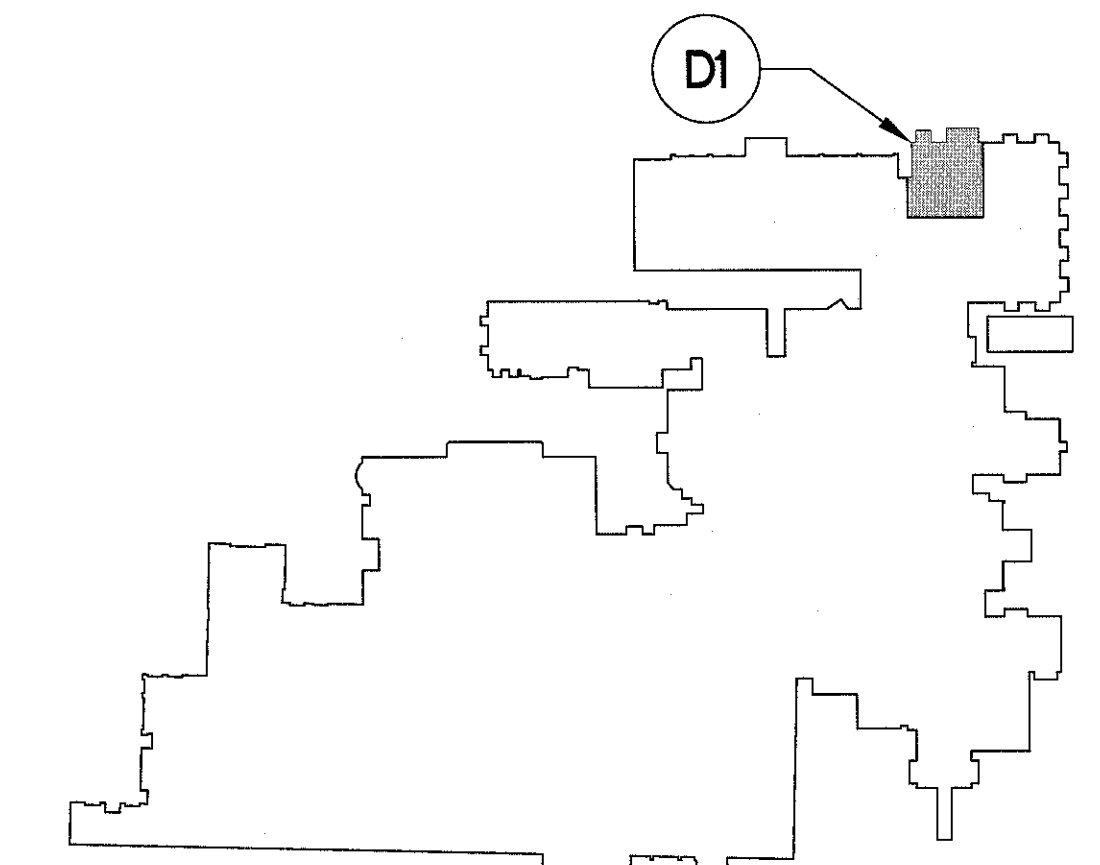


- NOTES:**
1. A VERTICAL DAMPER IS SHOWN. HORIZONTAL DAMPER INSTALLATION, IS SIMILAR. FOLLOW DAMPER MANUFACTURER'S INSTRUCTIONS, INCLUDING FASTENER OPTIONS AND GAGES FOR SLEEVE AND PERIMETER ANGLES. FIRE DAMPERS SHALL BE INSTALLED IN THE PARTITION AND NOT OUTSIDE THE PENETRATION.
 2. GALVANIZED SLEEVE: GAGE NOT LESS THAN CONNECTING DUCT. FASTEN SLEEVE TO DAMPER FRAME AND TO PERIMETER ANGLES.
 3. PERIMETER ANGLES: GALVANIZED STEEL, NOT LESS THAN 1 1/2"x1 1/2" [40x40mm], 14 GAGE, TO PROVIDE 1" [25mm] MINIMUM OVERLAP OF OPENING ON ALL 4 SIDES.
 4. BREAKAWAY DUCT CONNECTION: CONTRACTOR'S OPTION OF TYPES SHOWN IN SMACNA. ACCESS PANELS: SIZE AND LOCATION TO PERMIT SERVICING THE FUSIBLE LINK OR LINKS.
 5. PROVIDE 1/4" TO 1/2" [6 TO 15mm] CLEARANCE ON HEIGHT AND WIDTH. FILL OPEN SPACE WITH ROCK WOOL FIRESTOP FIBER.

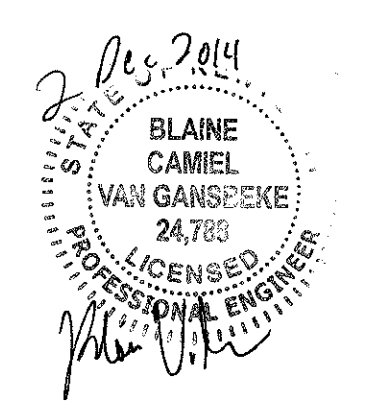

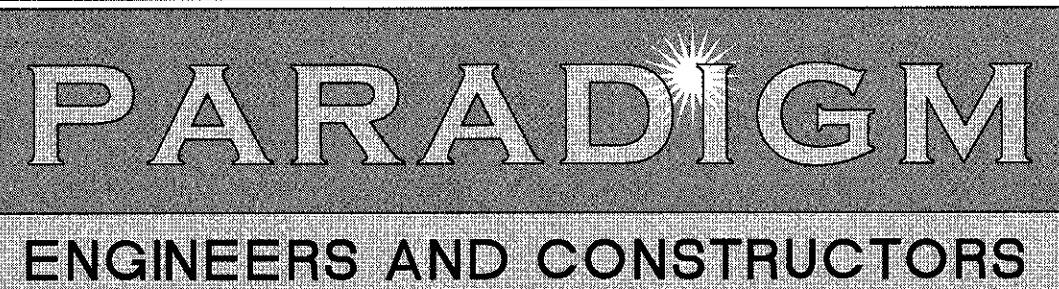
D4 SECTION THRU FIRE DAMPER INSTALLATION
NOT TO SCALE

- NOTES:**
- A. REFER TO SHEET M-001 FOR LEGEND, ABBREVIATIONS, AND GENERAL NOTES.
 - B. ALL EQUIPMENT IS EXISTING TO REMAIN UNLESS DENOTED AS NEW OR DESIGNATED TO BE REPLACED OR ALTERED (REFER TO KEY NOTES).
 - C. ALL FIRESTOPPING PRODUCTS AND SYSTEMS SHALL BE AS MANUFACTURED BY HILTI. NO EXCEPTIONS.

- KEY NOTES:**
1. PATCH METAL DUCT WHERE FLEX DUCT WAS REMOVED. REFER TO SHEET MD101.
 2. NEW FIRE DAMPER IN 2 HOUR RATED PARTITION, WITH SLEEVE AND ANGLE. REFER TO DETAIL D4/MH101.
 3. FURNISH AND INSTALL NEW DUCT ACCESS DOOR.
 4. RELOCATED UNIT HEATER. REFER TO SHEET MD101 AND DETAIL F1/MH101.



KEY PLAN
NOT TO SCALE

CONSULTANTS:			ARCHITECT/ENGINEERS:		Drawing Title MECHANICAL NEW WORK PLAN		Project Title REPLACE FIRE PUMP BUILDING 1		Project Number 583-13-121		Office of Construction and Facilities Management 
			 200 Envoy Circle #201, Louisville KY 40299 - PH: 502.339.8511 - www.paradigmusa.com		Approved Project Director		Location RICHARD L. ROUDEBUSH VAMC 1481 W 10TH STREET, INDIANAPOLIS IN 46202		Building Number 1		
Revisions:						Date 12-2-2014		Checked BAM	Drawn MMF		