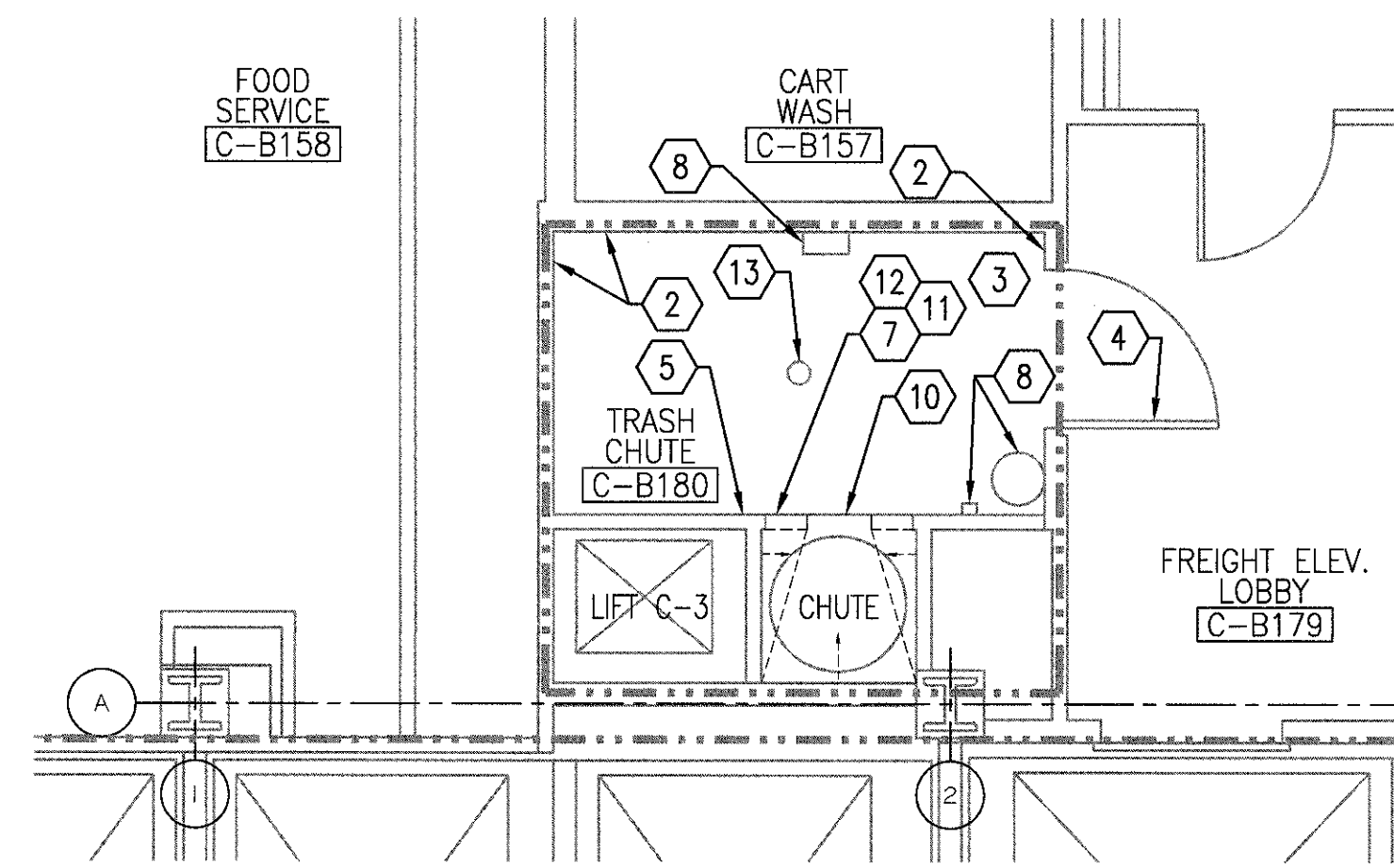
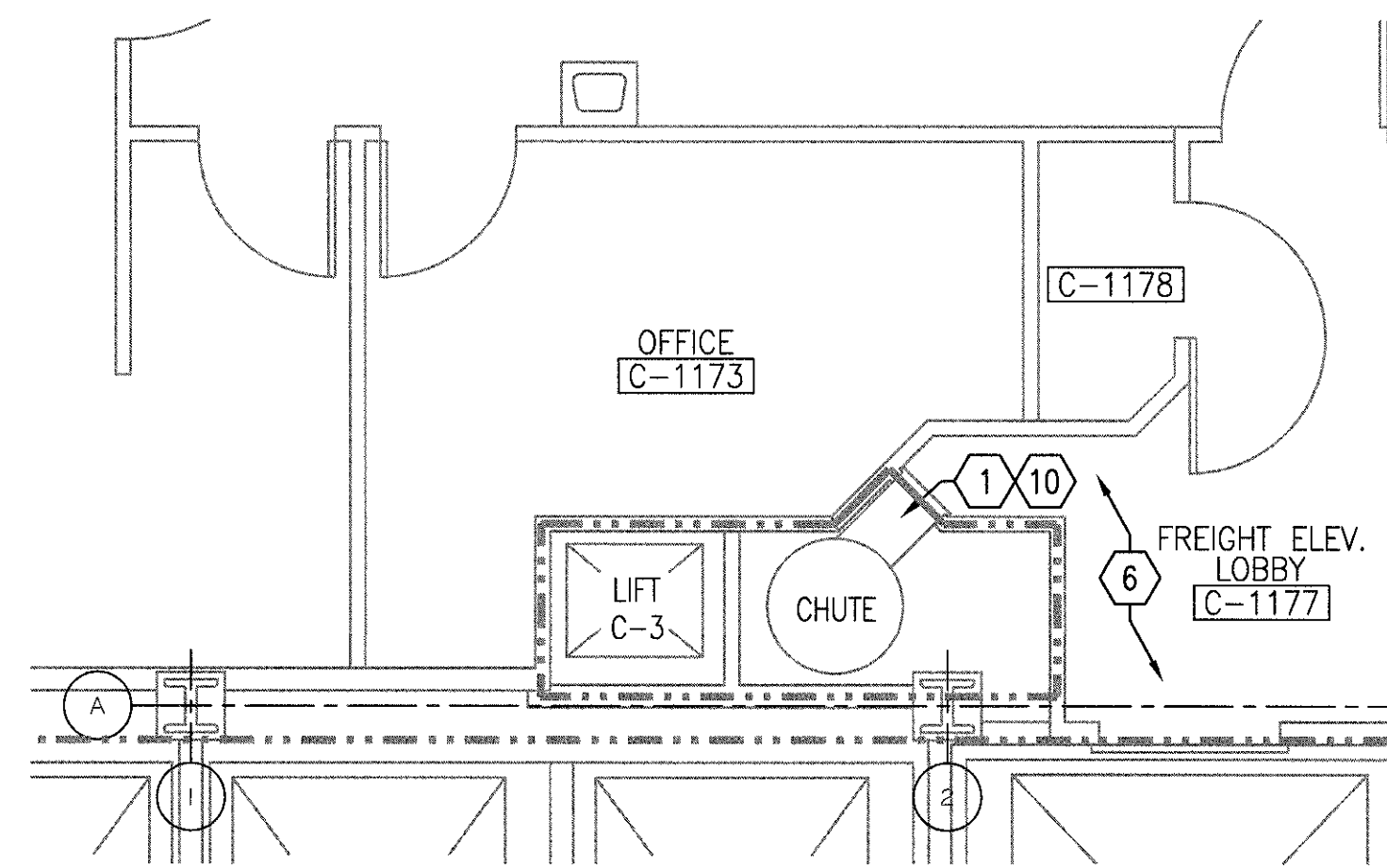


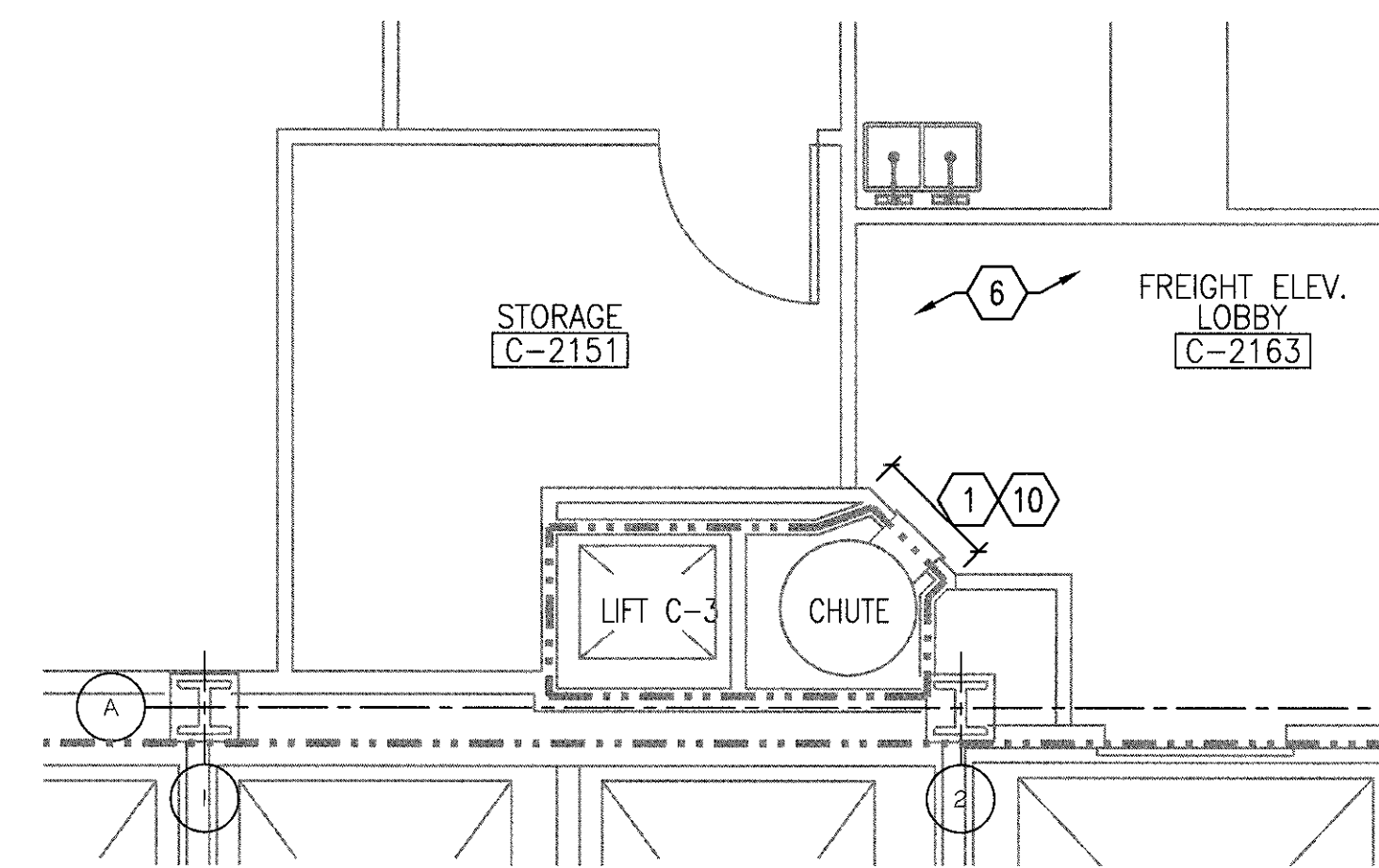
three inches = one foot
one and one half inches = one foot
one inch = one foot
three quarters inch = one foot
one half inch = one foot
three eighths inch = one foot
one quarter inch = one foot
one eighth inch = one foot



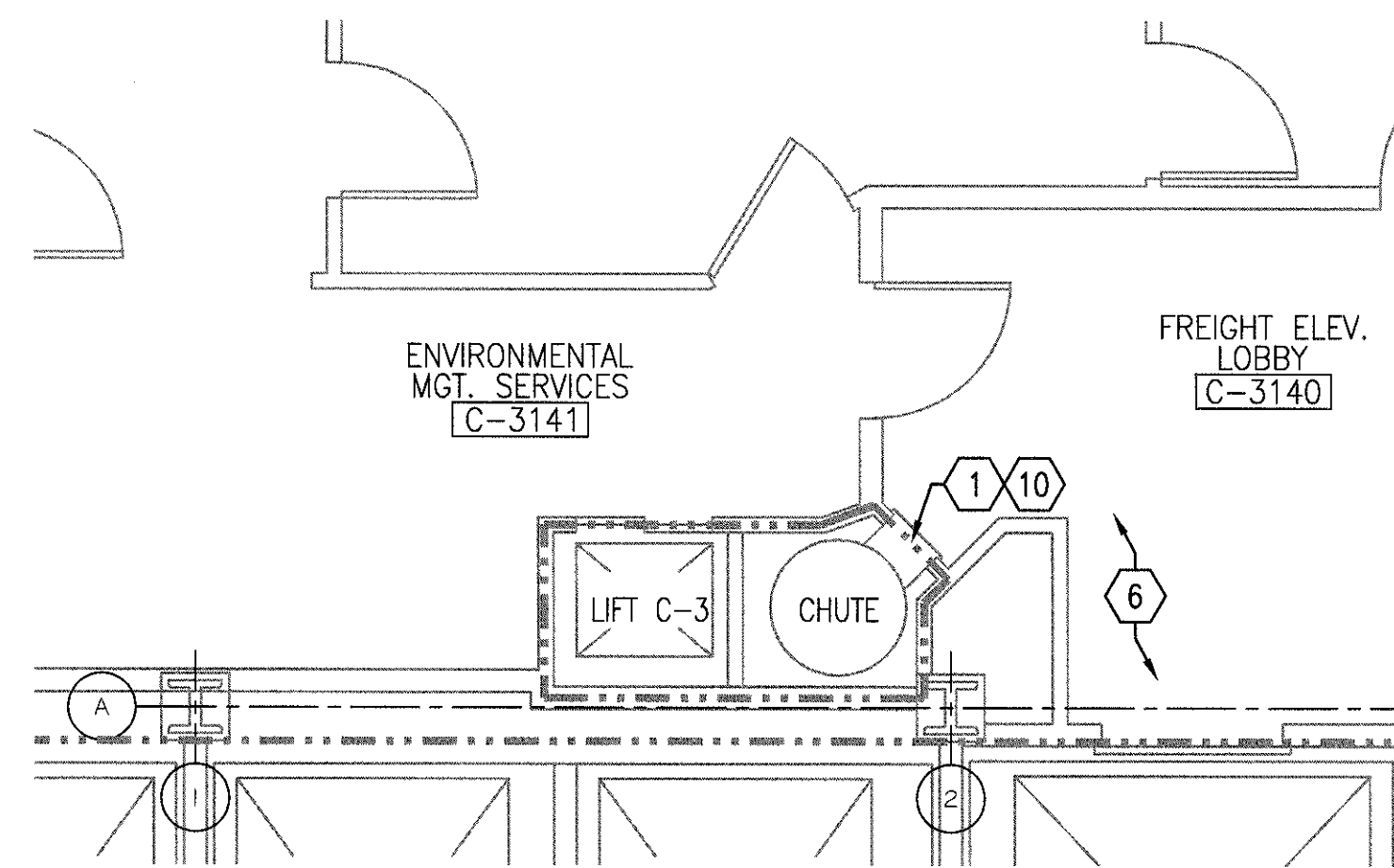
B1
1/4" = 1'-0"



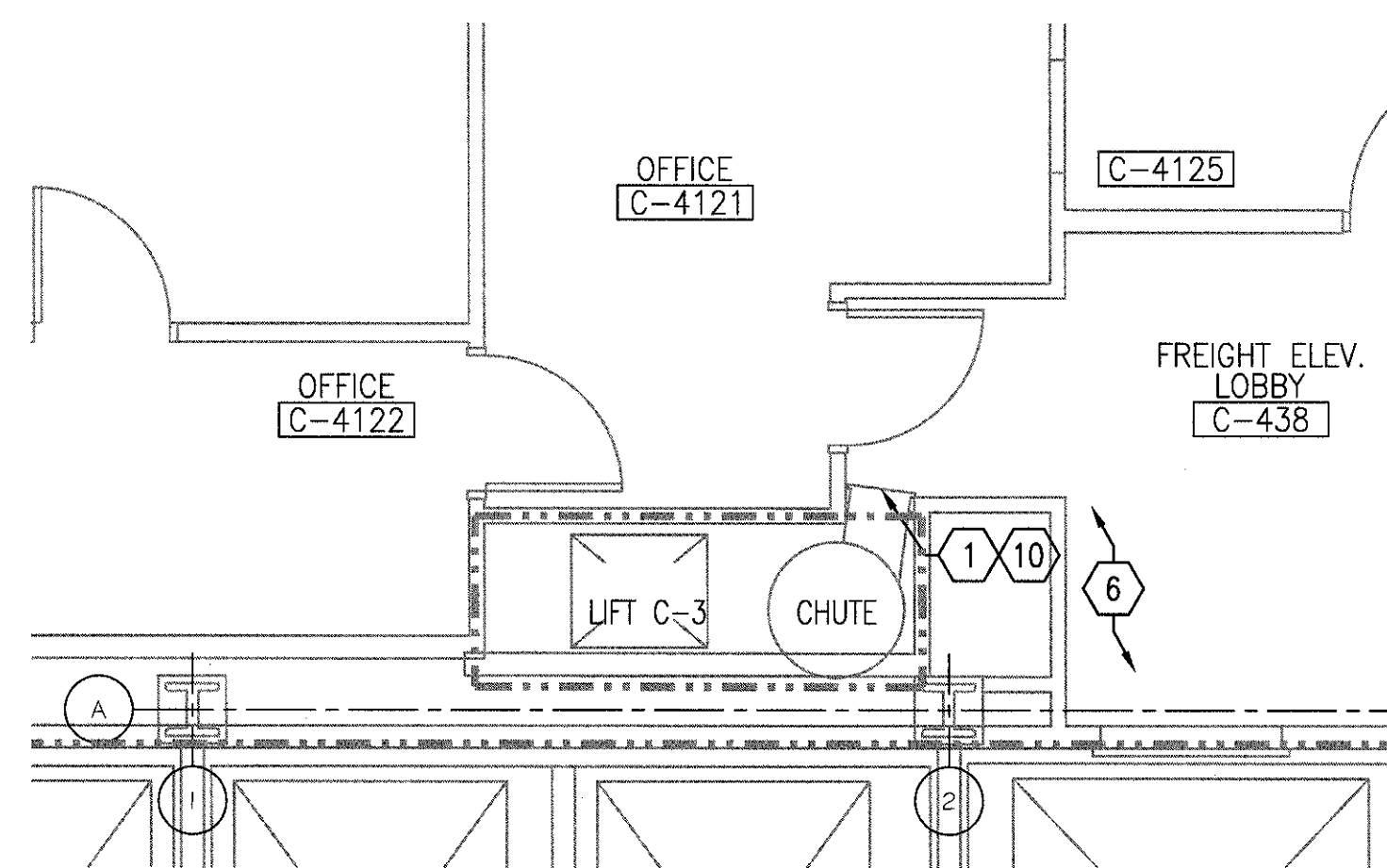
B3
1/4" = 1'-0"



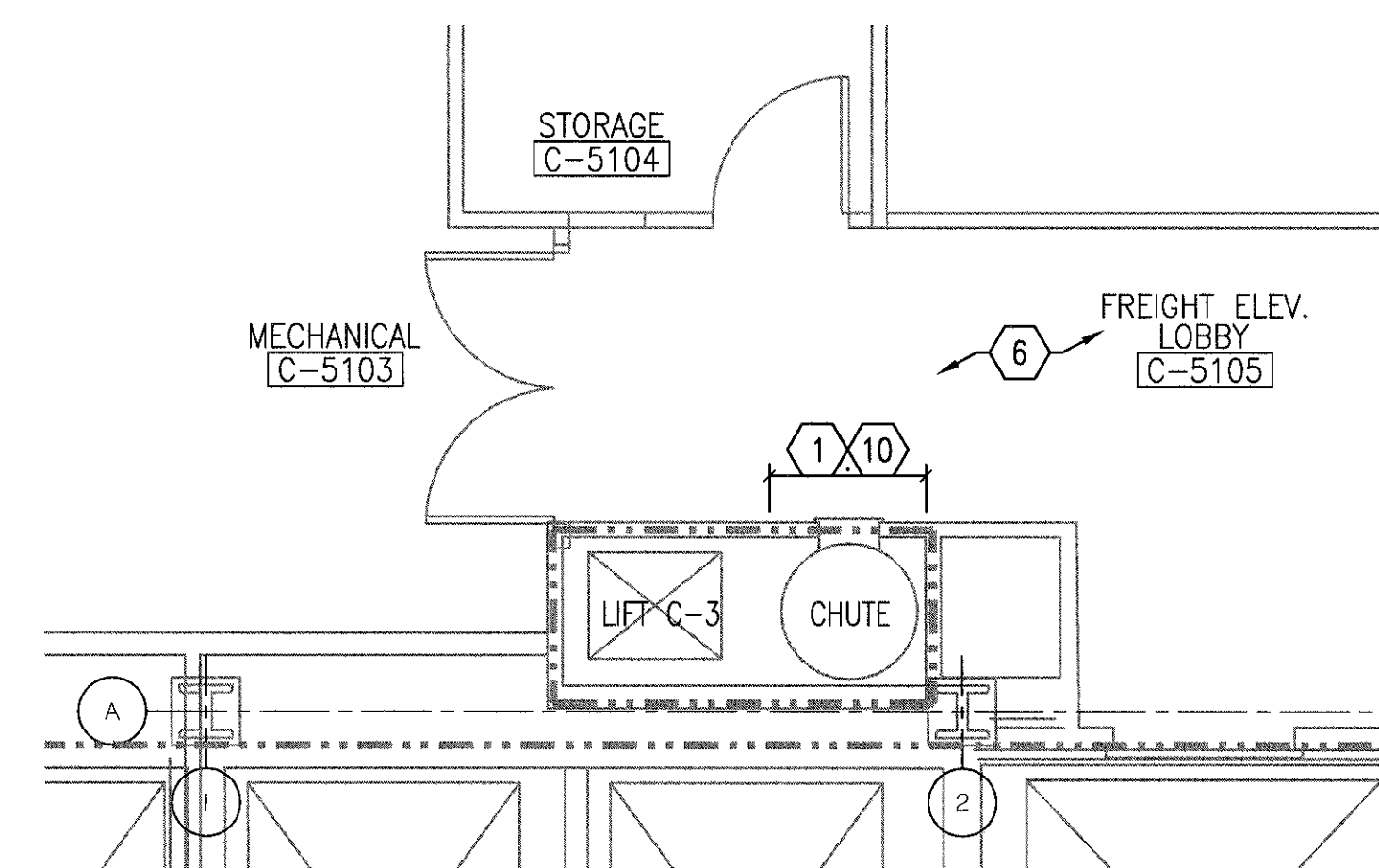
B5
1/4" = 1'-0"



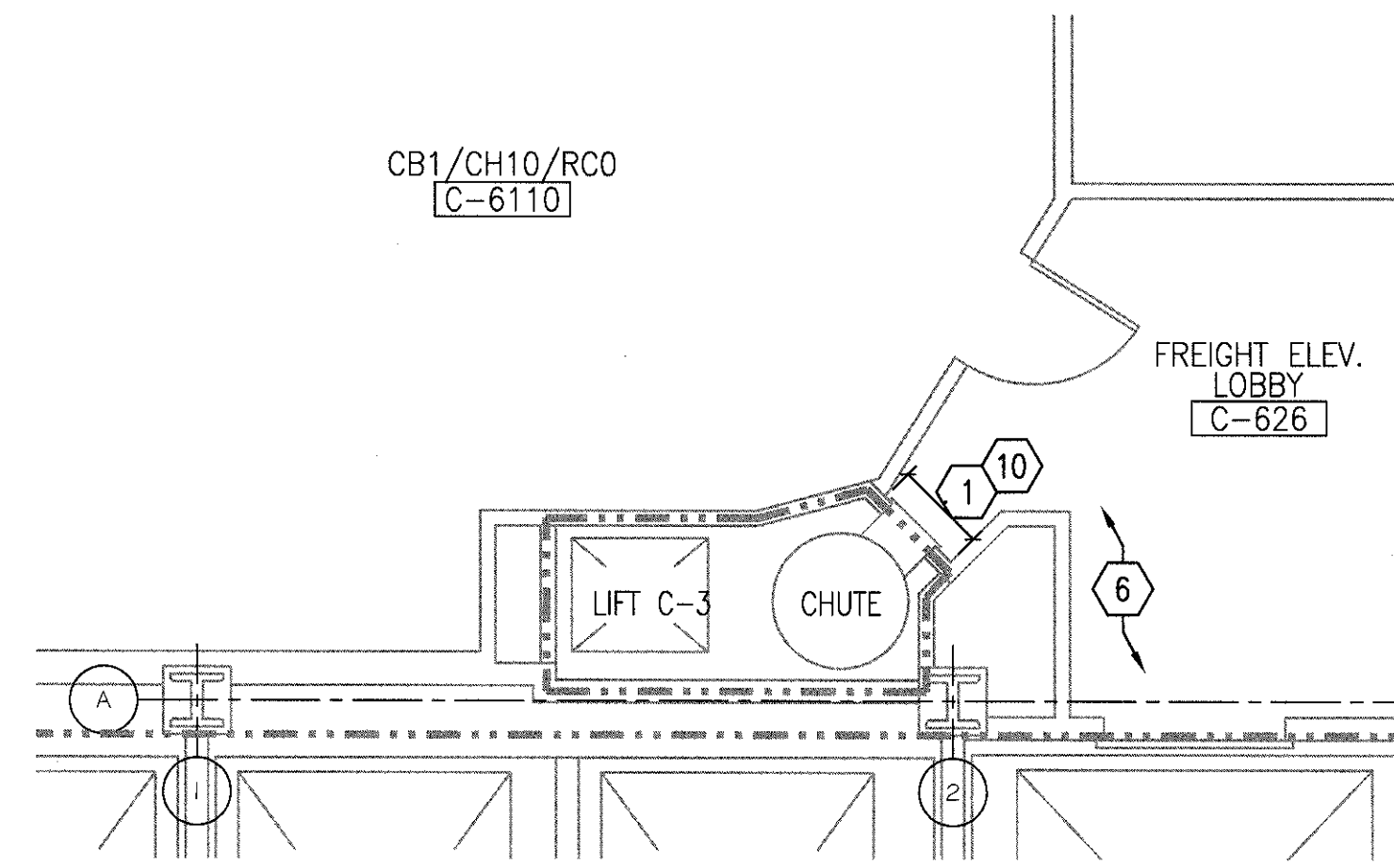
D1
1/4" = 1'-0"



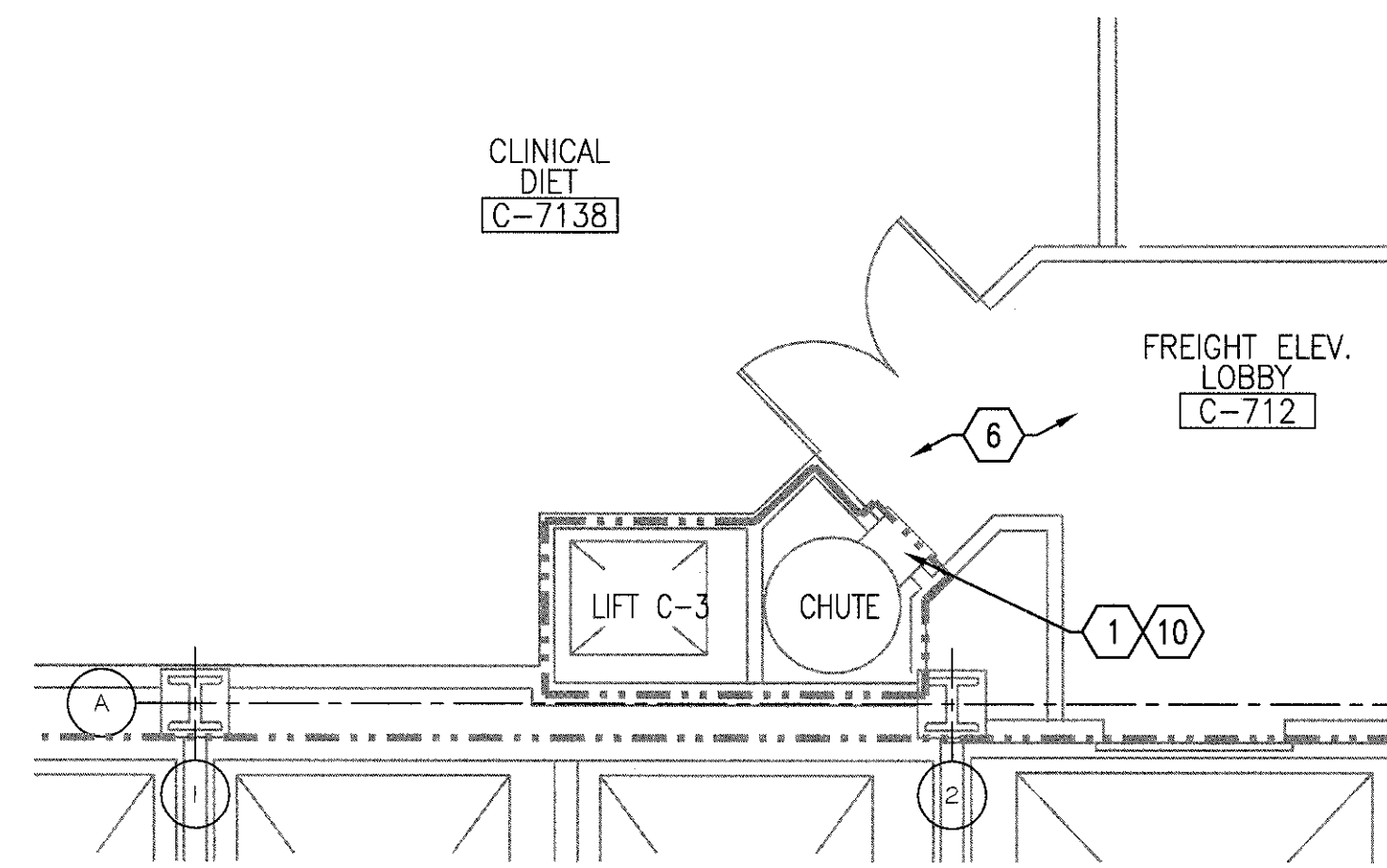
D3
1/4" = 1'-0"



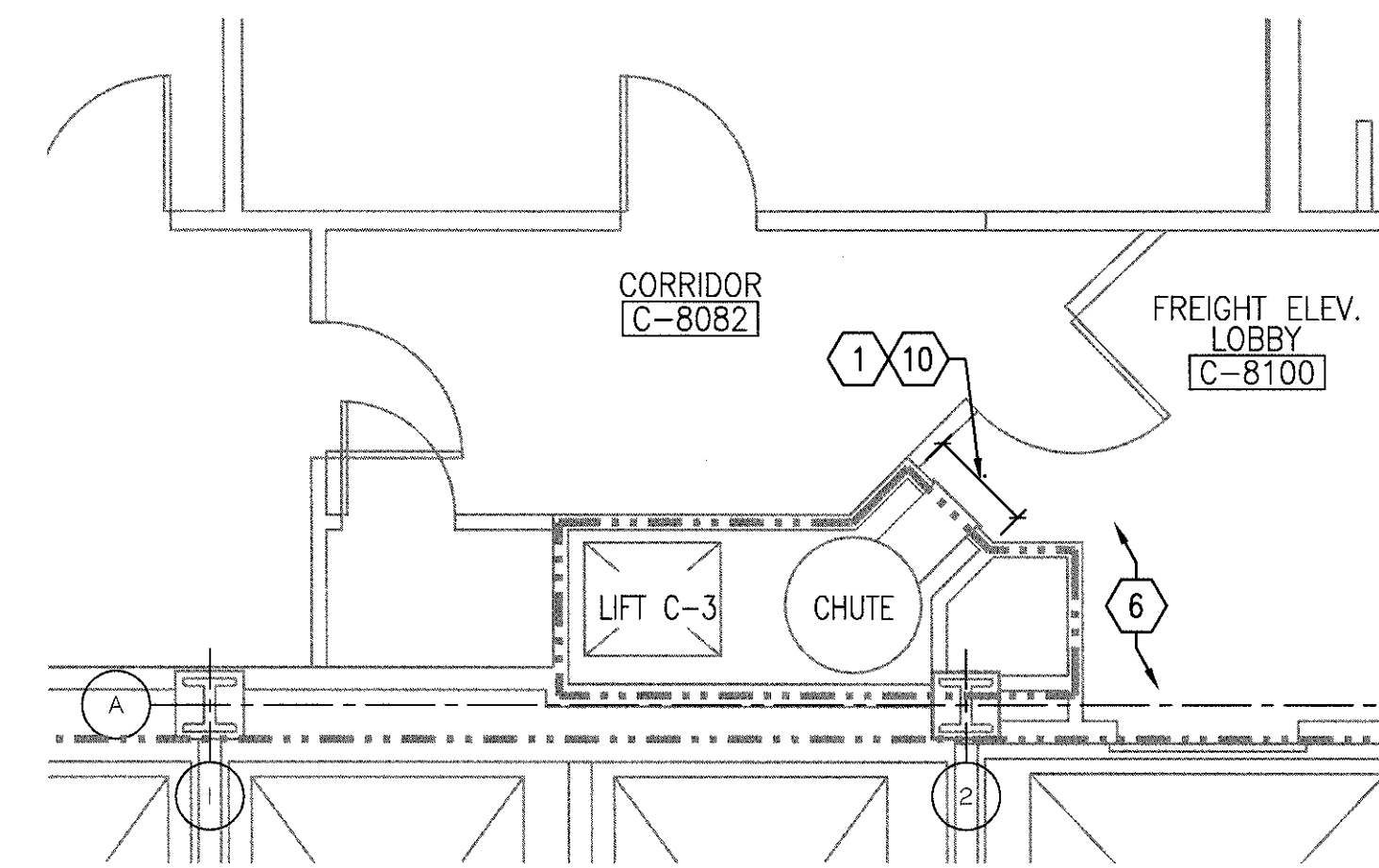
D5
1/4" = 1'-0"



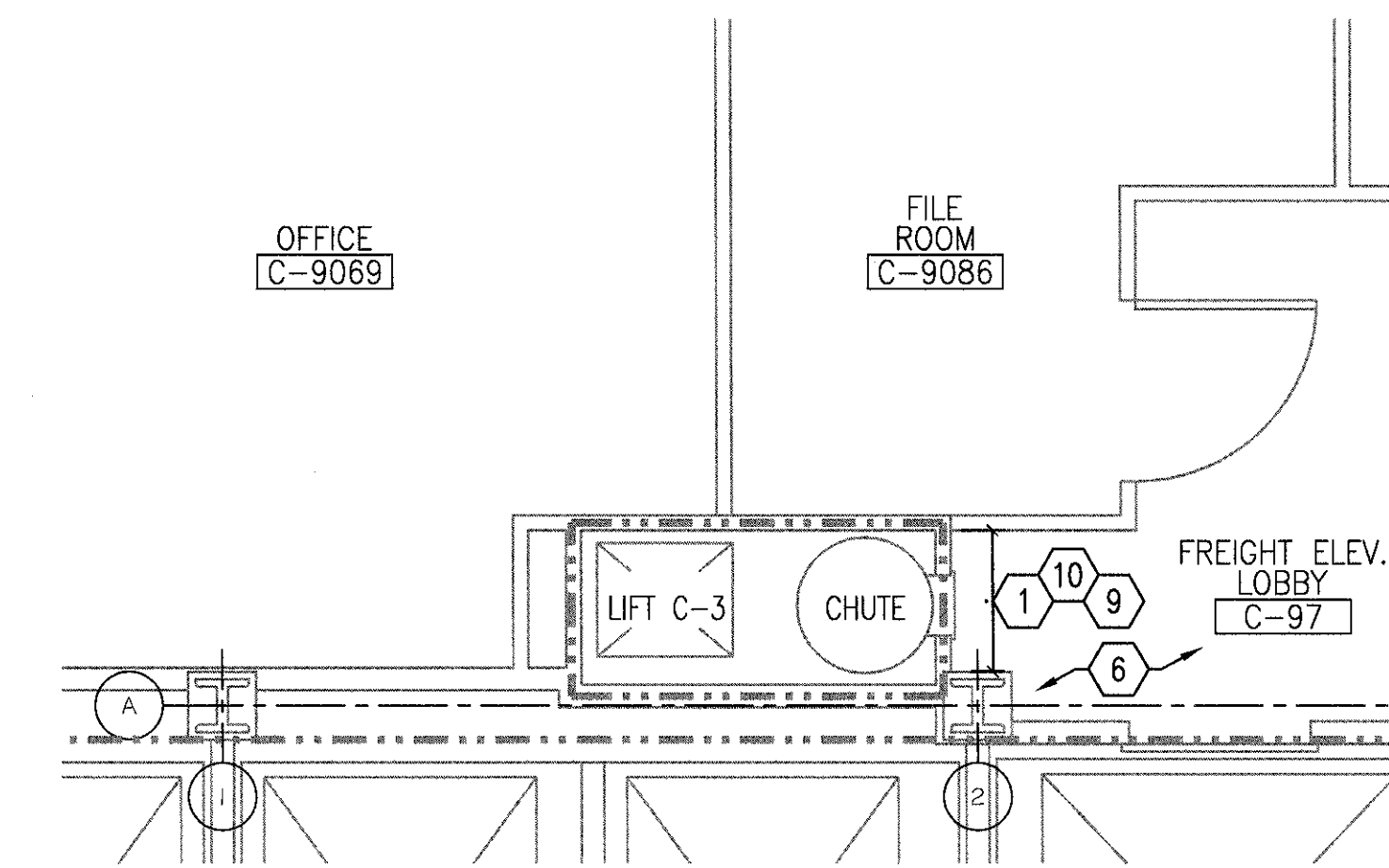
F1
1/4" = 1'-0"



F3
1/4" = 1'-0"



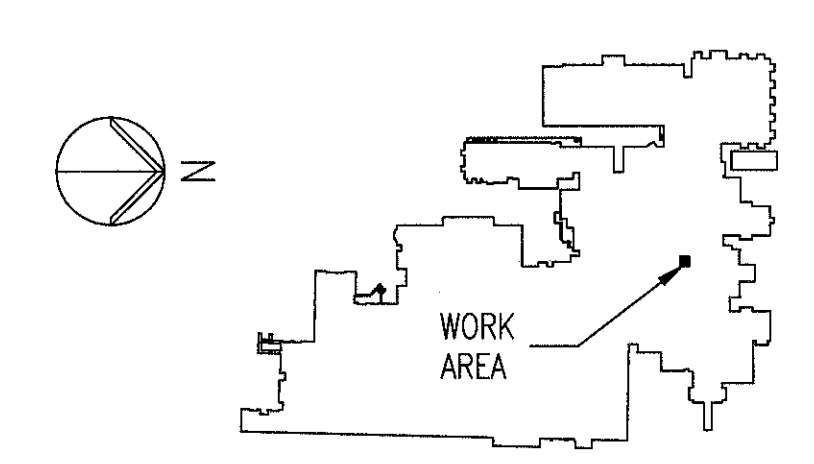
F5
1/4" = 1'-0"



F7
1/4" = 1'-0"

- GENERAL NOTES:**
- THE EXISTING TRASH CHUTE SHAFT IS 2 HOUR FIRE RATED CONSTRUCTION. ANY WORK SHALL COMPLY WITH THIS 2 HOUR FIRE RATING.
 - ALL DEMOLITION WORK SHALL COMPLY WITH MEDICAL CENTER REQUIREMENTS AND PROCEDURES.
 - REMOVE ALL ACCESSORIES ON WALLS WITHIN 8'-0" FROM FLOOR THAT ARE NOT TO REMAIN.
 - DO NOT LEAVE SHAFT WALL OPENING LEFT OPEN AT THE END OF A WORKDAY. PROVIDE TEMPORARY CLOSURE.
 - REMOVE ALL EXISTING SAFETY SHEETS, SIGNS, PERMITS, AND INSTRUCTIONS. REINSTALL FOR NEW DOORS.

- KEY NOTES:**
- REMOVE TRASH CHUTE DOOR. EXISTING LOCKSETS AND LOCK CORES SHALL BE REMOVED AND TURNED OVER TO THE VA.
 - REMOVE EXISTING CERAMIC TILE WAINSCOT.
 - EXISTING TERRAZZO FLOOR TO BE REMOVED TO A DEPTH OF 2".
 - EXISTING DOOR AND FRAME TO REMAIN.
 - REMOVE EXISTING STAINLESS STEEL PANELS.
 - EXISTING VINYL FLOOR TILE AND BASE TO REMAIN.
 - DISCHARGE DOORS TO REMAIN.
 - WALL MOUNTED EQUIPMENT TO BE REMOVED AND SALVAGED FOR REINSTALLATION.
 - ACCESS PANEL TO REMAIN.
 - CONSTRUCTION CORE LOCKS TO REMAIN WITH VA. VA TO REPLACE WITH "BEST" CORE AT LATER DATE.
 - SLIDE ARMS TO BE REMOVED FOR THE INSTALLATION OF RESINOUS EPOXY WALL COATING, AND RE-INSTALLED IN THE SAME LOCATION. MODIFY AS REQUIRED.
 - REMOVE EXISTING MAGNETIC LOCK SYSTEM.
 - MAINTAIN CLEAR FLOOR DRAIN DURING CONSTRUCTION.



KEY PLAN
NTS.

FIRE RATING LEGEND:
2 HOUR FIRE RATED WALL CONSTRUCTION

CONSULTANTS:		ARCHITECT/ENGINEERS:		Drawing Title		Project Title		Project Number		Office of Construction and Facilities Management	
				ARCHITECTURAL FLOOR PLANS - DEMOLITION		REPLACE TRASH CHUTE		583-13-160		Department of Veterans Affairs	
				Approved Project Director		Location RICHARD L. ROUDEBUSH VAMC 1481 W 10TH STREET, INDIANAPOLIS IN 46202		Building Number 1			
						Date 10-07-2014		Checked JCP			
								Drawn LBS			
								Drawing Number AD101			
Revisions		Date									