

1 ISOMETRIC - EXISTING CONDITIONS

FINAL SUBMITTAL
APPROVED FOR CONSTRUCTION

Revisions:	Date

CONSULTANTS:

GRÄEF
2300 Maitland Center Parkway
Suite 210
Maitland, FL 32751
407 / 659 0553
407 / 659 0609 fax
www.graef-usa.com
CERT # 4270

WTI
WATER TECHNOLOGY INC.

Engineer of Record
CALEB FREEMAN FL PE No. 74604

ARCHITECT/ENGINEERS:

AKEA INC
3603 NW 98TH ST, SUITE B
GAINESVILLE, FLORIDA 32606
Ph: (352) 474-6124
FAX: (352) 474-6324
CERT. OF AUTH: FL #26693
EXPIRES: 02/28/2015
AKEA PROJECT NO: 053-13

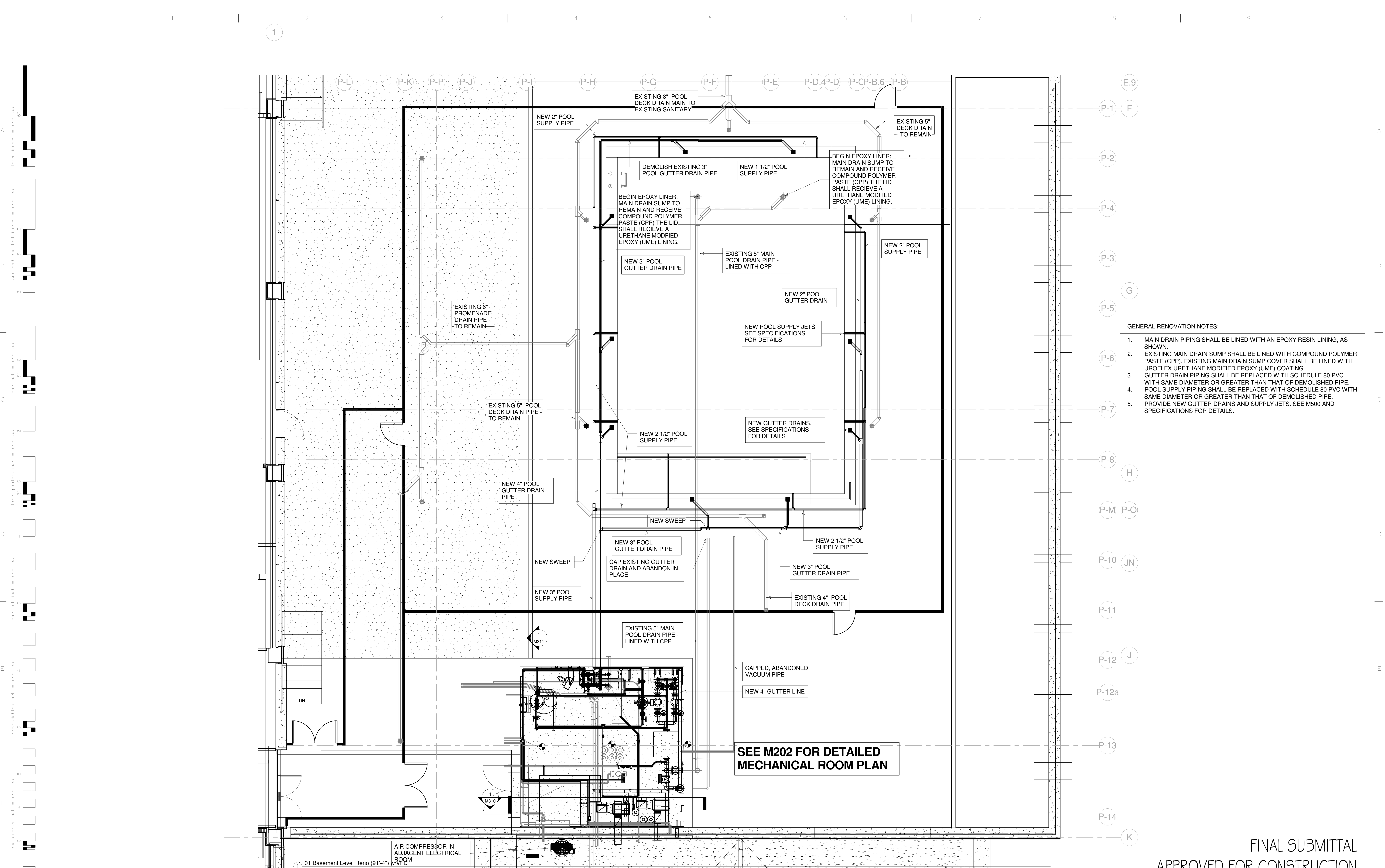
Drawing Title	Project Title
ISOMETRIC - DEMOLITION	RENOVATIONS TO THE POOL MALCOM RANDALL VAMC
Approved: Project Director	Location GAINESVILLE, FLORIDA
	Date JULY 23, 2014
	Checked MT
	Drawn CF

Project Number	Building Number	Drawing Number
VA-13-C-0130	1	M103
Page 16 of 29		

Office of
Construction
and Facilities
Management

Department of
Veterans Affairs

three inches = one foot
one and one half inches = one foot
one inch = one foot
three quarters inch = one foot
one half inch = one foot
three eighths inch = one foot
one quarter inch = one foot
one eighth inch = one foot
one eighth inch = one foot



- GENERAL RENOVATION NOTES:**
1. MAIN DRAIN PIPING SHALL BE LINED WITH AN EPOXY RESIN LINING, AS SHOWN.
 2. EXISTING MAIN DRAIN SUMP SHALL BE LINED WITH COMPOUND POLYMER PASTE (CPP). EXISTING MAIN DRAIN SUMP COVER SHALL BE LINED WITH UROFLEX URETHANE MODIFIED EPOXY (UME) COATING.
 3. GUTTER DRAIN PIPING SHALL BE REPLACED WITH SCHEDULE 80 PVC WITH SAME DIAMETER OR GREATER THAN THAT OF DEMOLISHED PIPE.
 4. POOL SUPPLY PIPING SHALL BE REPLACED WITH SCHEDULE 80 PVC WITH SAME DIAMETER OR GREATER THAN THAT OF DEMOLISHED PIPE.
 5. PROVIDE NEW GUTTER DRAINS AND SUPPLY JETS. SEE M500 AND SPECIFICATIONS FOR DETAILS.

SEE M202 FOR DETAILED MECHANICAL ROOM PLAN

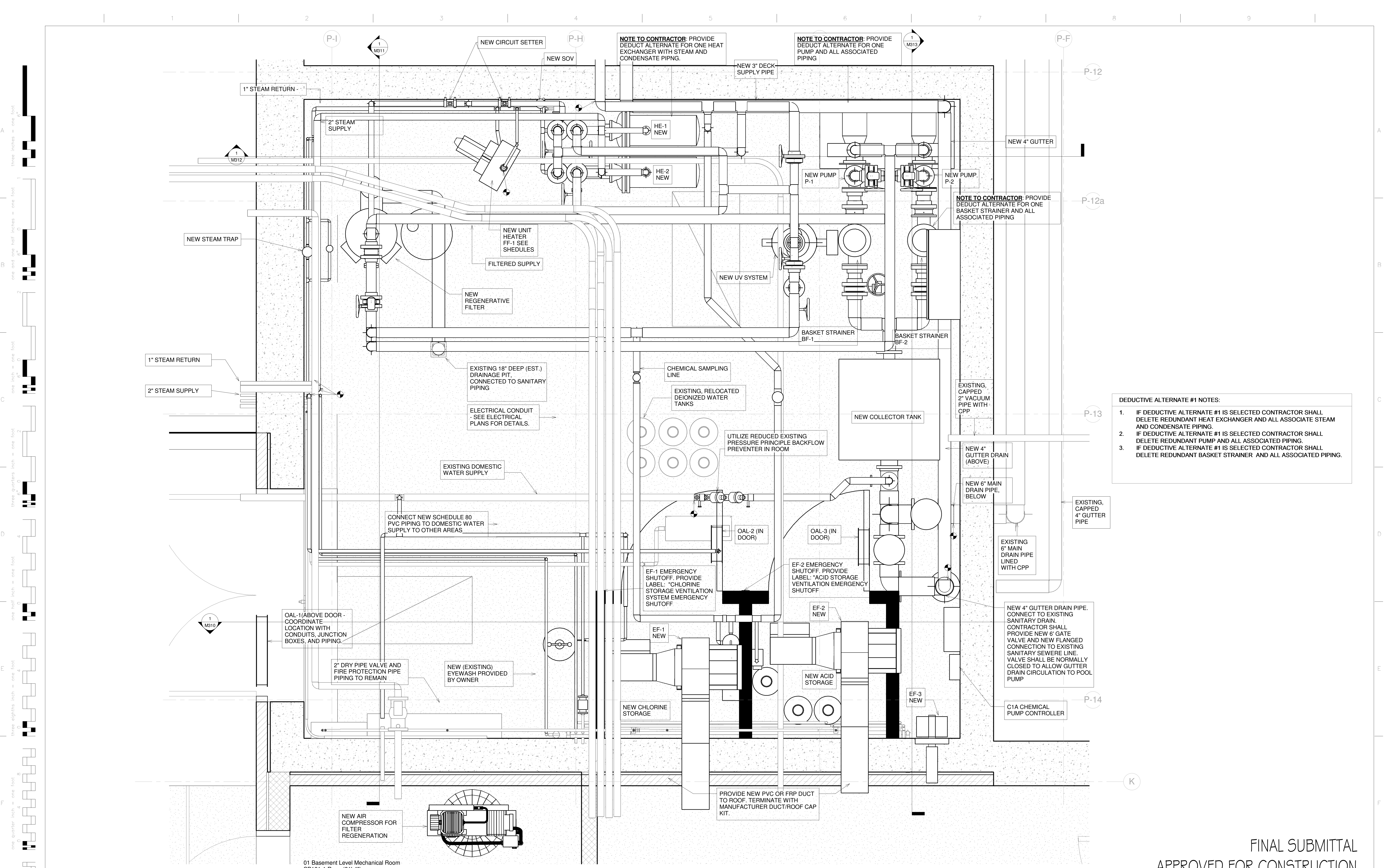
01 Basement Level Reno (91'-4") w/VFD
1/4" = 1'-0"

CONSULTANTS: 2300 Maitland Center Parkway, Suite 210, Maitland, FL 32751, 407.659.0553, 407.659.0609 fax, www.graef-usa.com, CERT # 4270 WATER TECHNOLOGY INC.		Engineer of Record FL PE No. 74604 CALEB FREEMAN		ARCHITECT/ENGINEERS: 3603 NW 98TH ST, SUITE B, GAINESVILLE, FLORIDA 32606, Ph: (352) 474-6124, FAX: (352) 474-6324, CERT. OF AUTH: FL #26693, EXPIRES: 02/28/2015, AKEA PROJECT NO: 053-13		Drawing Title BASEMENT RENOVATION PLAN		Project Title RENOVATIONS TO THE POOL MALCOM RANDALL VAMC		Project Number VA-13-C-0130		Office of Construction and Facilities Management	
Revisions: _____ Date _____		Approved: Project Director		Location GAINESVILLE, FLORIDA		Building Number 1		Drawing Number M201		Department of Veterans Affairs			
						Date JULY 23, 2014		Checked MT		Drawn CF		Page 17 of 29	

FINAL SUBMITTAL
APPROVED FOR CONSTRUCTION

Scale: 1/4" = 1'-0"

Vertical Scale: three eighths inch = one foot, three quarters inch = one foot, one half inch = one foot, one inch = one foot, one and one half inches = one foot, two inches = one foot, three inches = one foot, four inches = one foot, six inches = one foot, eight inches = one foot, ten inches = one foot, twelve inches = one foot, fifteen inches = one foot, twenty inches = one foot, twenty five inches = one foot, thirty inches = one foot, thirty six inches = one foot, forty inches = one foot, forty five inches = one foot, fifty inches = one foot, fifty six inches = one foot, sixty inches = one foot, sixty six inches = one foot, seventy inches = one foot, seventy six inches = one foot, eighty inches = one foot, eighty six inches = one foot, ninety inches = one foot, ninety six inches = one foot, one hundred inches = one foot.



three inches = one foot
one and one half inches = one foot
one inch = one foot
three quarters inch = one foot
one half inch = one foot
three eighths inch = one foot
one quarter inch = one foot
one eighth inch = one foot
one sixteenth inch = one foot

CONSULTANTS:

GRAEF
2300 Maitland Center Parkway
Suite 210
Maitland, FL 32751
407 / 659 0553
407 / 659 0609 fax
www.graef-usa.com
CERT # 4270

WTI
WATER TECHNOLOGY INC.

Engineer of Record FL PE No.
CALEB FREEMAN 74604

ARCHITECT/ENGINEERS:

AKEA INC
3603 NW 98TH ST, SUITE B
GAINESVILLE, FLORIDA 32606
PH: (352) 474-6124
FAX: (352) 474-6324
CERT. OF AUTH. FL #26693
EXPIRES: 02/28/2015
AKEA PROJECT NO: 053-13

Drawing Title
MECHANICAL ROOM ENLARGED PLAN - RENOVATION

Approved: Project Director

Project Title
**RENOVATIONS TO THE POOL
MALCOM RANDALL VAMC**

Project Number
VA-13-C-0130

Building Number
1

Location
GAINESVILLE, FLORIDA

Date
JULY 23, 2014

Checked
MT

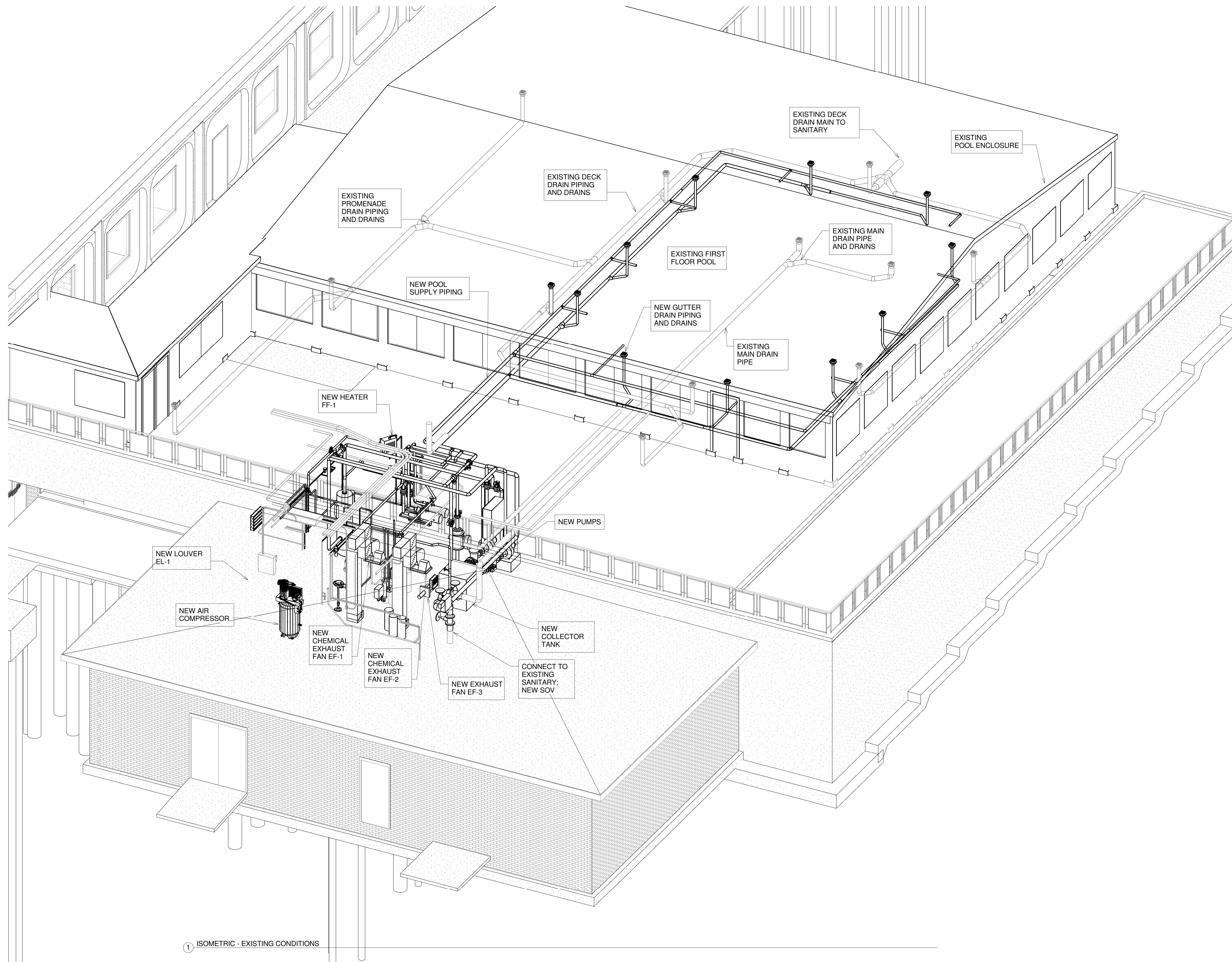
Drawn
CF

Drawing Number
M202

Page 18 of 29

Office of
Construction
and Facilities
Management

Department of
Veterans Affairs



1 ISOMETRIC - EXISTING CONDITIONS

FINAL SUBMITTAL
APPROVED FOR CONSTRUCTION

Revisions:	Date

CONSULTANTS:

GRÆF
2300 Maitland Center Parkway
Suite 210
Maitland, FL 32751
407 / 659 0553
407 / 659 0609 fax
www.graef-usa.com
CERT # 4270

WTI
WATER TECHNOLOGY INC.

Engineer of Record FL PE No.
CALEB FREEMAN 74604

ARCHITECT/ENGINEERS:

AKEA INC
3603 NW 98TH ST, SUITE B
GAINESVILLE, FLORIDA 32606
PH: (352) 474-6124
FAX: (352) 474-6324
CERT. OF AUTH: FL #26693
EXPIRES: 02/28/2015
AKEA PROJECT NO: 053-13

Drawing Title
ISOMETRIC - RENOVATION

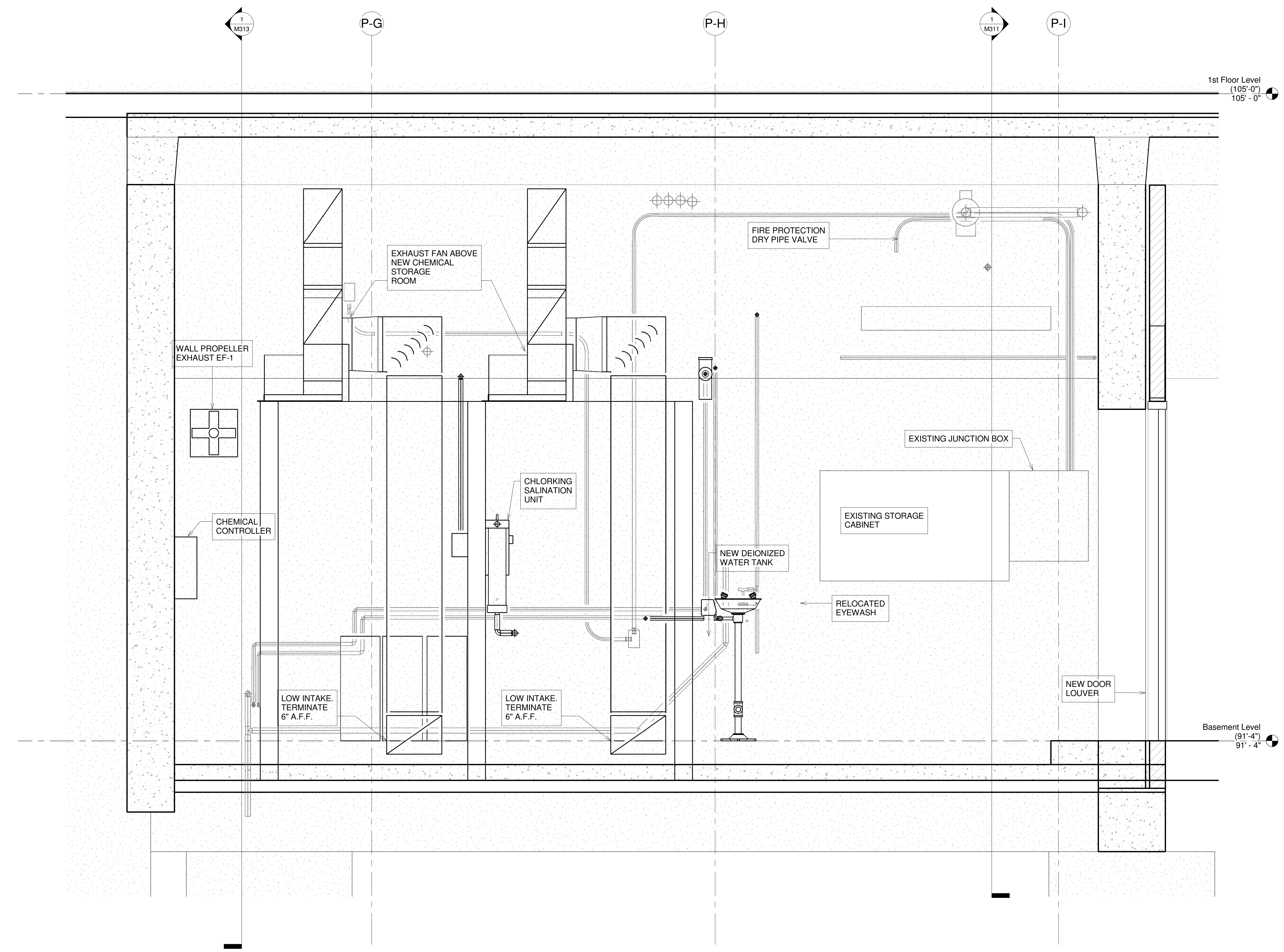
Approved: Project Director

Project Title RENOVATIONS TO THE POOL MALCOM RANDALL VAMC			Project Number VA-13-C-0130
Location GAINESVILLE, FLORIDA			Building Number 1
Date JULY 23, 2014	Checked MT	Drawn CF	Drawing Number M301
			Page 19 of 29

Office of
Construction
and Facilities
Management

Department of
Veterans Affairs

A
three inches = one foot
B
one and one half inches = one foot
C
one inch = one foot
D
three quarters inch = one foot
E
one half inch = one foot
F
three eighths inch = one foot
G
one quarter inch = one foot
H
one eighth inch = one foot
I
one sixteenth inch = one foot



1 Mechanical Room SP101-1 South Elevation
1" = 1'-0"

FINAL SUBMITTAL
APPROVED FOR CONSTRUCTION

Revisions:	Date

CONSULTANTS:

GRÄEF
2300 Maitland Center Parkway
Suite 210
Maitland, FL 32751
407 / 655 0553
407 / 655 0609 fax
www.graef-usa.com
CERT # 4270

WTI
WATER TECHNOLOGY INC.

Engineer-of-Record FL PE No.
CALEB FREEMAN 74604

ARCHITECT/ENGINEERS:

AKEA INC
3603 NW 98TH ST, SUITE B
GAINESVILLE, FLORIDA 32606
PH: (352) 474-6124
FAX: (352) 474-6324
CERT. OF AUTH: FL #26693
EXPIRES: 02/28/2015
AKEA PROJECT NO: 053-13

Drawing Title
MECHANICAL ROOM SOUTH ELEVATION

Approved: Project Director

Project Title
**RENOVATIONS TO THE POOL
MALCOM RANDALL VAMC**

Location
GAINESVILLE, FLORIDA

Date
JULY 23, 2014

Checked
MT

Drawn
CF

Project Number
VA-13-C-0130

Building Number
1

Drawing Number
M310

Page 20 of 29

Office of
Construction
and Facilities
Management

Department of
Veterans Affairs