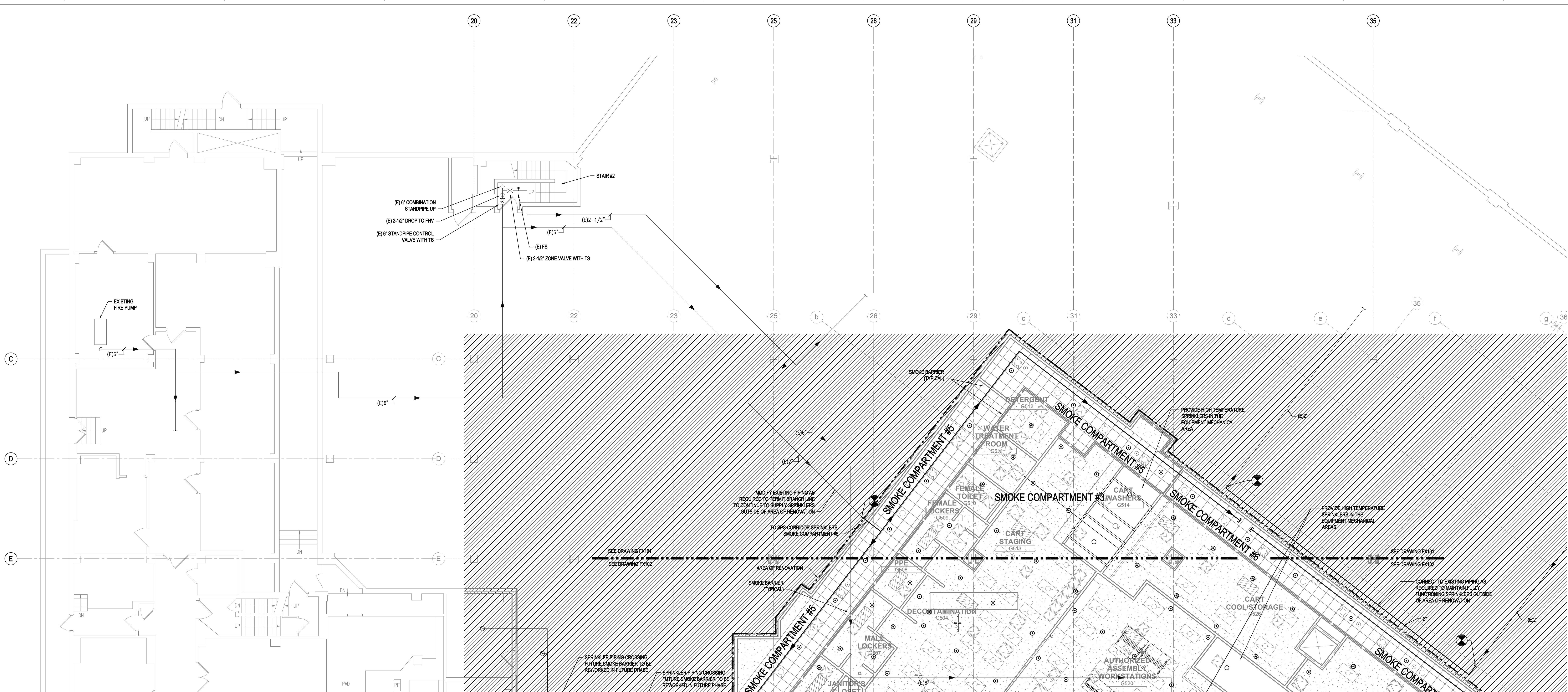
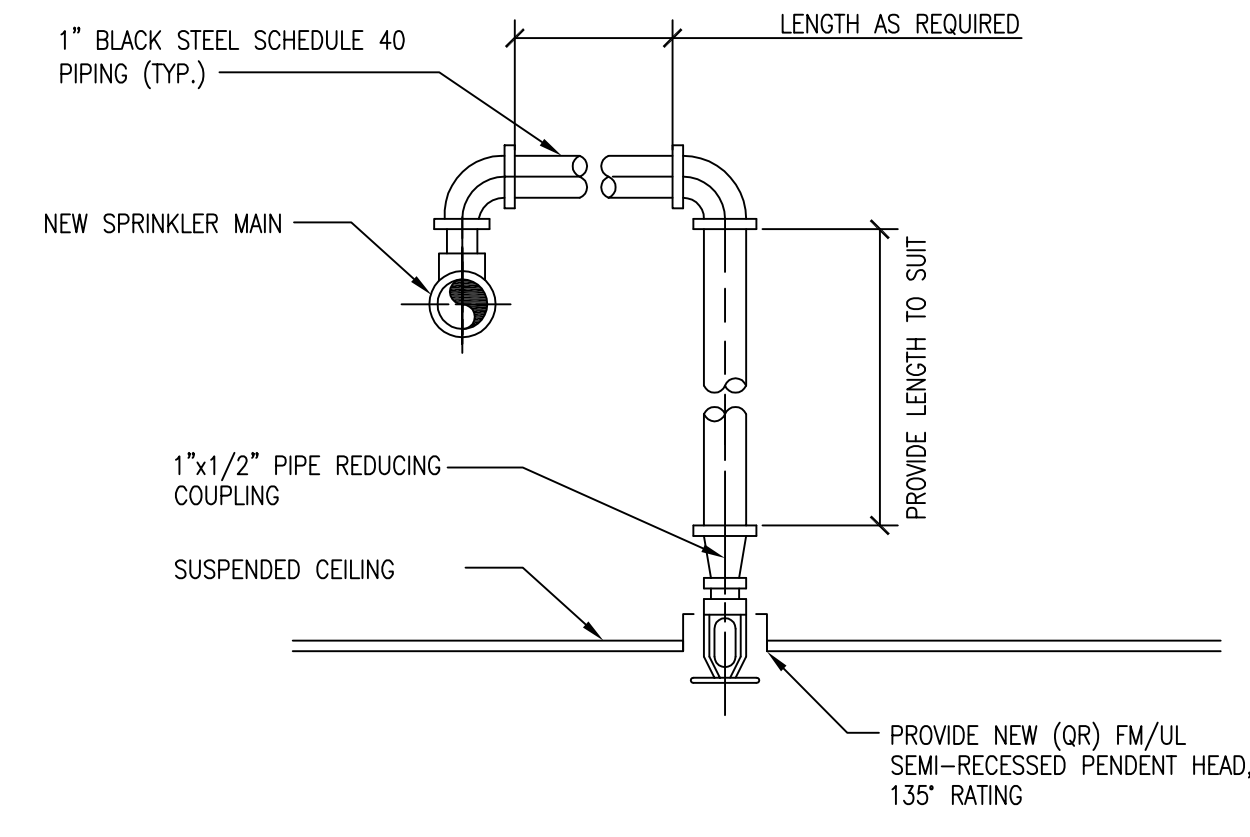


three inches = one foot
 one and one half inches = one foot
 one inch = one foot
 three quarters inch = one foot
 one half inch = one foot
 three eighths inch = one foot
 one quarter inch = one foot
 one eighth inch = one foot



1 GROUND FLOOR FIRE PROTECTION PLAN - PART 1
1/8" = 1'-0"

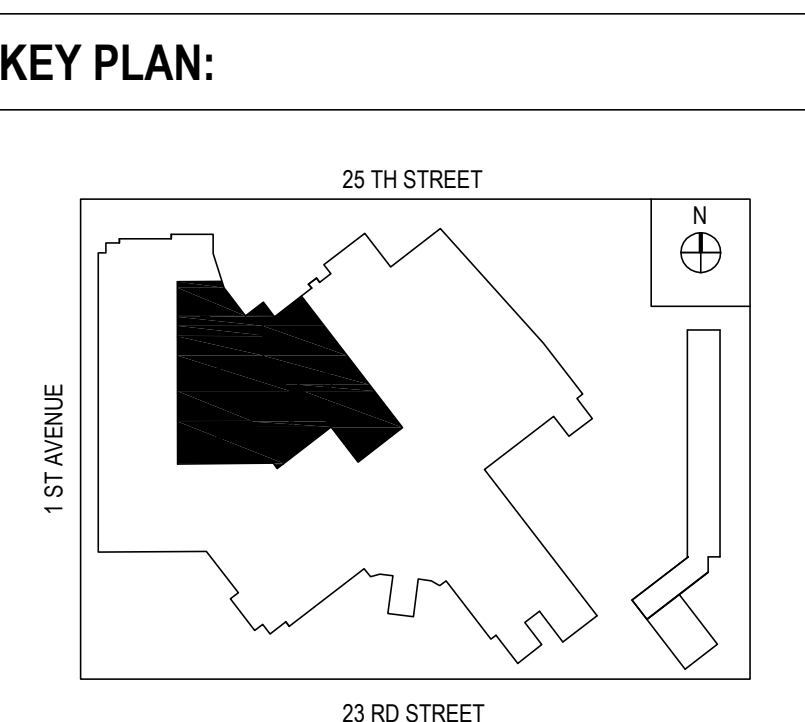


2 SPRINKLER HEAD DROP DETAIL

- NOTES:**
- ADJUST SPRINKLER DROPS AS NECESSARY TO CLEAR OBSTRUCTIONS SUCH AS CEILING "T" BAR SUSPENSION SYSTEM, LIGHT FIXTURES, ETC. PROVIDE A PIPE HANGER IF THE HORIZONTAL OFFSET LENGTH EXCEEDS 24"
 - ALL NEW PENDENT HEADS SHALL BE FM APPROVED, SEMI-RECESSED, QUICK RESPONSE TYPE.
 - ALL NEW HEADS SHALL BE CENTER OF TILE.

- NOTES**
- AREA IS ORDINARY HAZARD GROUP 2.
 - MAXIMUM SPRINKLER COVERAGE OF 130 SQUARE FEET PER HEAD.
 - REPLACE ALL SPRINKLER HEADS IN AREA OF RENOVATION.
 - EXISTING SPRINKLER ZONE VALVE IN STAIR #3 TO SERVE ALL SPRINKLERS WITHIN SPS SMOKE COMPARTMENT #3. SPRINKLER PIPING SHALL NOT CROSS SMOKE BARRIER.
 - PROVIDE NEW SPRINKLER ZONE VALVE, FLOW SWITCH, AND TEST & DRAIN ASSEMBLY IN STAIR #3 TO SERVE ALL SPRINKLERS WITHIN SMOKE COMPARTMENT #7.
 - NOT ALL OF THE EXISTING SPRINKLER PIPING IS SHOWN. CONTRACTOR SHALL FIELD SURVEY AND COORDINATE WITH EXISTING CONDITIONS.

- SYMBOLS**
- EXISTING PIPE
 - - - NEW PIPE
 - - - SPRINKLER DRAIN PIPING (SPD)
 - NEW SEMI-RECESSED PENDENT SPRINKLER HEAD
 - NEW UPRIGHT SPRINKLER HEAD
 - CONNECT TO EXISTING
 - (E) EXISTING
 - FHV FIRE HOSE VALVE
 - V VALVE
 - FLOW SWITCH (FS)
 - TS TAMPER SWITCH
 - TEST AND DRAIN ASSEMBLY
 - ELBOW UP
 - ELBOW DN



FULLY SPRINKLERED

NO.	ISSUE FOR CONSTRUCTION	DATE

CONSULTANTS:

WARNING: This warning is required to be included on this document under New York State Education Law, Article 145, Section 7209, Sub-paragraph 2. It is a violation of the aforementioned law for any person, unless acting under the direction of a licensed professional engineer or land surveyor, to alter any portion of the design set forth on this document. If any item of the design set forth in this document is altered, the altering engineer or land surveyor shall affix to the item his/her seal and the notation "altered by" followed by his/her signature and the date of such alteration and a specific description of the alteration.

David E. Kurten, Jr
092848

ARCHITECT/ENGINEERS:

HDR

Henningson, Durham & Richardson, Architecture and Engineering, P.C.
500 Seventh Ave, 11th Floor, New York, NY 10018 - 212-904-1212

Drawing Title
FIRE PROTECTION GROUND FLOOR PLAN - PART 01

Approved: Project Director

Project Title
VA NY HARBOR HEALTHCARE SYSTEM
MANHATTAN CAMPUS GROUND FLOOR PHASE 1B
STERILE PROCESSING SUITE

Project Number
219359

Building Number
6

Drawing Number
FX101

Date
02/18/2014

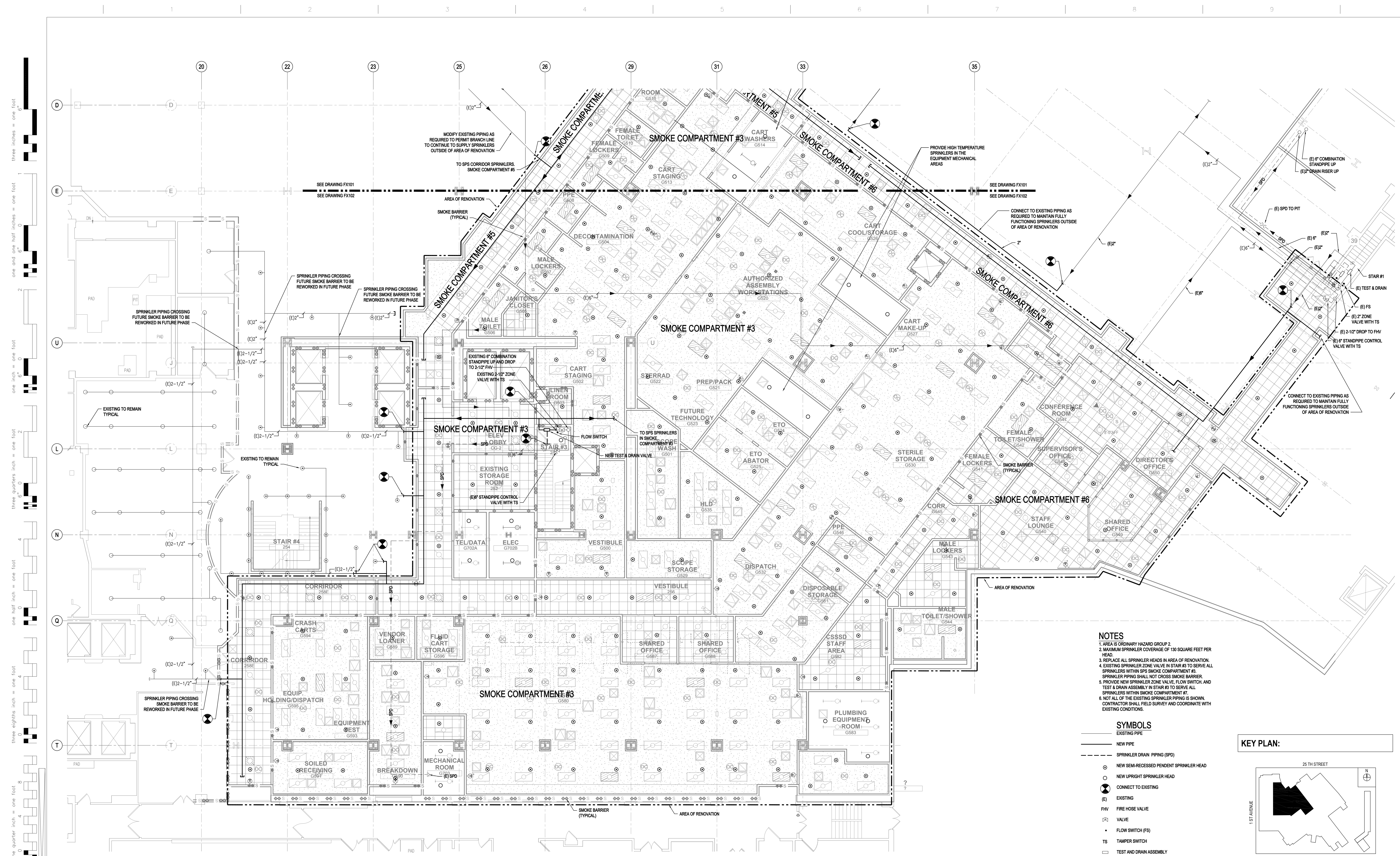
Checked
KEY

Drawn
CEH

Dwg. of

Office of Construction and Facilities Management

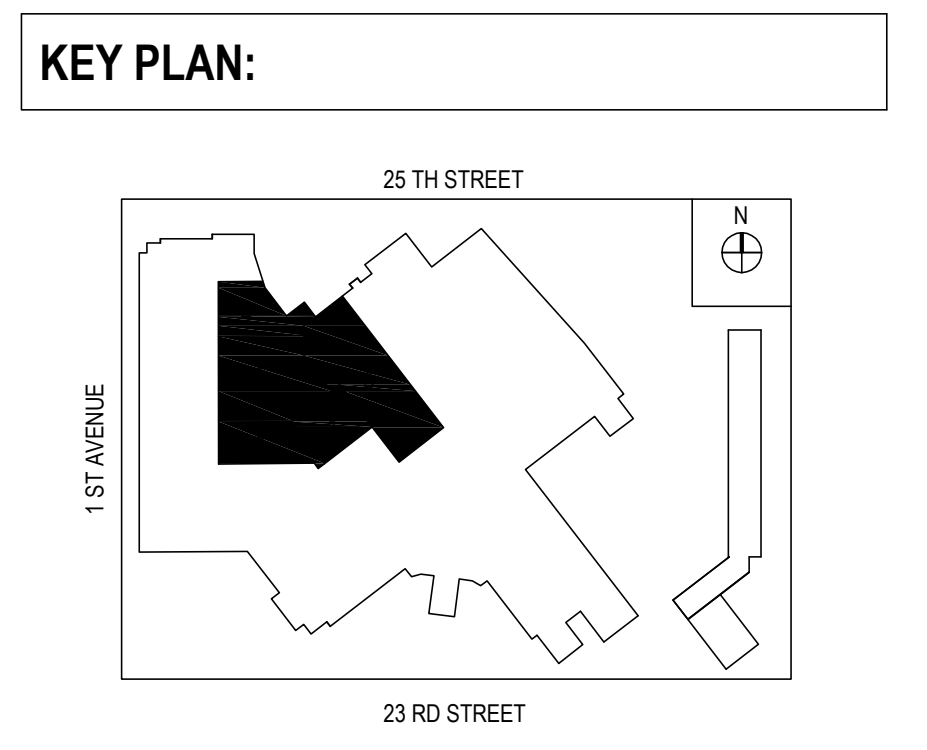
VA U.S. Department of Veterans Affairs



three inches = one foot
 one and one half inches = one foot
 one inch = one foot
 three quarters inch = one foot
 one half inch = one foot
 one quarter inch = one foot
 one eighth inch = one foot

- NOTES**
1. AREA IS ORDINARY HAZARD GROUP 2.
 2. MAXIMUM SPRINKLER COVERAGE OF 130 SQUARE FEET PER HEAD.
 3. REPLACE ALL SPRINKLER HEADS IN AREA OF RENOVATION.
 4. EXISTING SPRINKLER ZONE VALVE IN STAIR #3 TO SERVE ALL SPRINKLERS WITHIN SPS SMOKE COMPARTMENT #3. SPRINKLER PIPING SHALL NOT CROSS SMOKE BARRIER.
 5. PROVIDE NEW SPRINKLER ZONE VALVE, FLOW SWITCH, AND TEST & DRAIN ASSEMBLY IN STAIR #3 TO SERVE ALL SPRINKLERS WITHIN SMOKE COMPARTMENT #7.
 6. NOT ALL OF THE EXISTING SPRINKLER PIPING IS SHOWN. CONTRACTOR SHALL FIELD SURVEY AND COORDINATE WITH EXISTING CONDITIONS.

- SYMBOLS**
- EXISTING PIPE
 - NEW PIPE
 - - - SPRINKLER DRAIN PIPING (SPD)
 - NEW SEMI-RECESSED PENDENT SPRINKLER HEAD
 - NEW UPRIGHT SPRINKLER HEAD
 - CONNECT TO EXISTING
 - (E) EXISTING
 - FHV FIRE HOSE VALVE
 - ⊠ VALVE
 - FLOW SWITCH (FS)
 - TAMPER SWITCH
 - ⊠ TEST AND DRAIN ASSEMBLY
 - ELBOW UP
 - ELBOW DN



1 GROUND FLOOR FIRE PROTECTION PLAN - PART 2
1/8" = 1'-0"

CONSULTANTS:

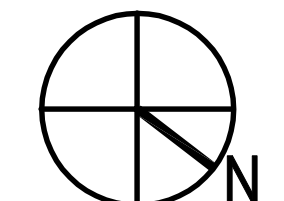
NO	ISSUE FOR CONSTRUCTION	REVISIONS	DATE

WARNING: This warning is required to be included on this document under New York State Education Law, Article 145, Section 7209, Sub-paragraph 2. It is a violation of the aforementioned law for any person, unless acting under the direction of a licensed professional engineer or land surveyor, to alter any portion of the design set forth on this document. If any item of the design set forth in this document is altered, the altering engineer or land surveyor shall affix to the item his/her seal and the notation "altered by" followed by his/her signature and the date of such alteration and a specific description of the alteration.

David E. Kurten, Jr
092848

ARCHITECT/ENGINEERS:

HDR
Henningson, Durham & Richardson, Architecture and Engineering, P.C.
500 Seventh Ave, 11th Floor, New York, NY 10018, 212-904-1212



Drawing Title
FIRE PROTECTION GROUND FLOOR PLAN - PART 02

Approved: Project Director

Project Title
**VA NY HARBOR HEALTHCARE SYSTEM
MANHATTAN CAMPUS GROUND FLOOR PHASE 1B
STERILE PROCESSING SUITE**

Location
423 E 23RD STREET, NEW YORK, NY 10010

Project Number
219359
Building Number
6
Drawing Number
FX102
Dwg. of

FULLY SPRINKLERED

Office of
Construction
and Facilities
Management
VA U.S. Department
of Veterans Affairs