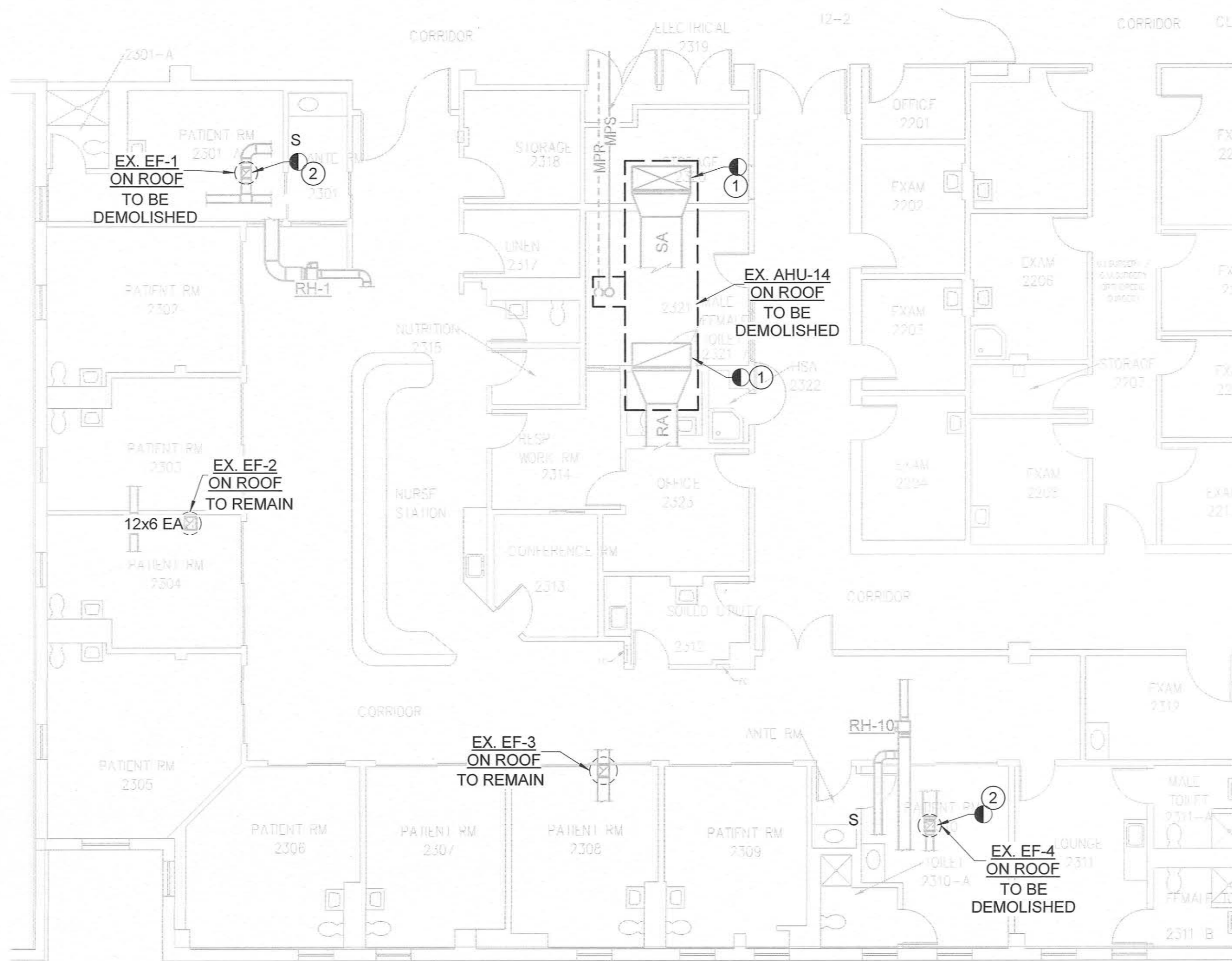
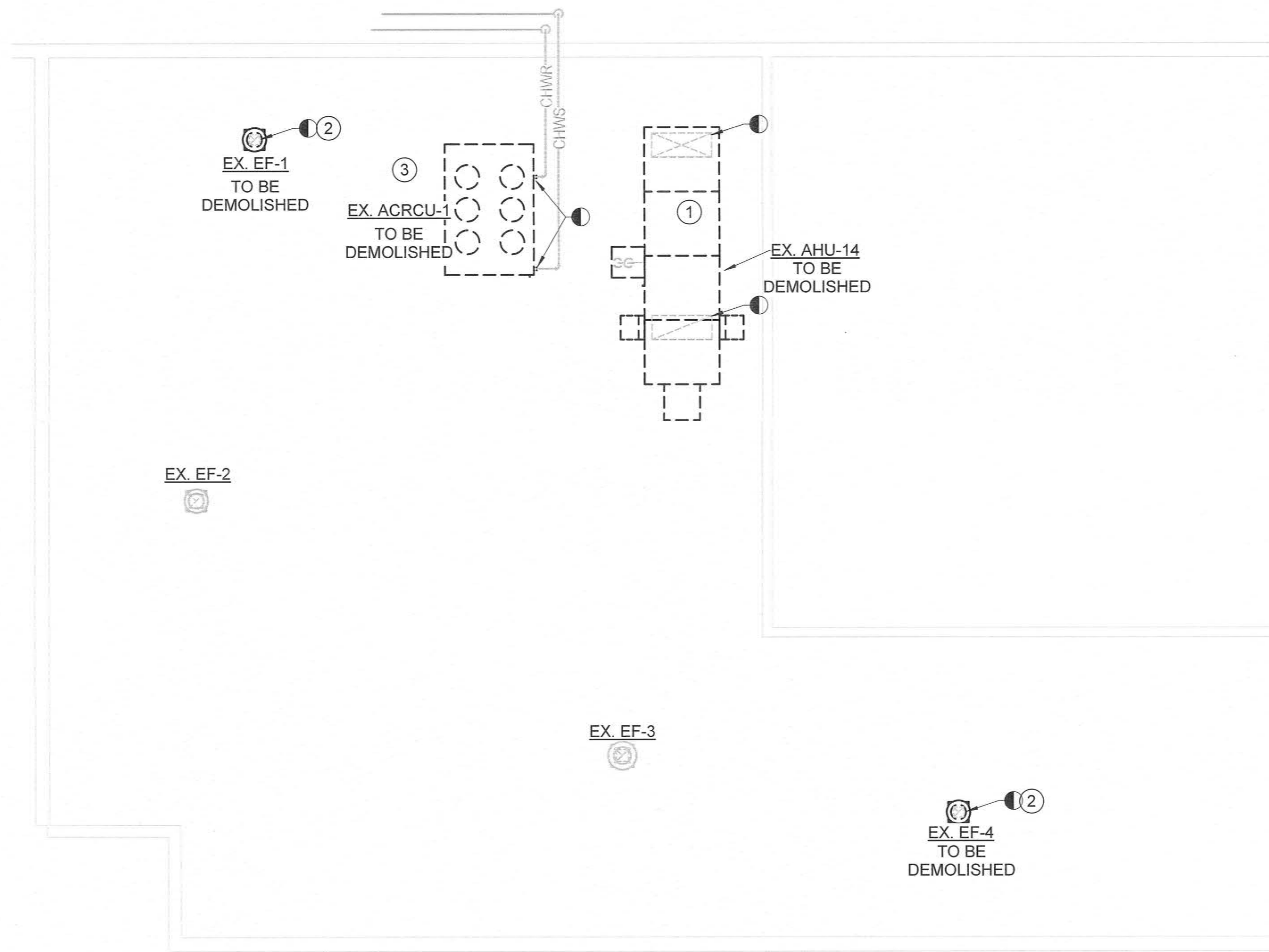


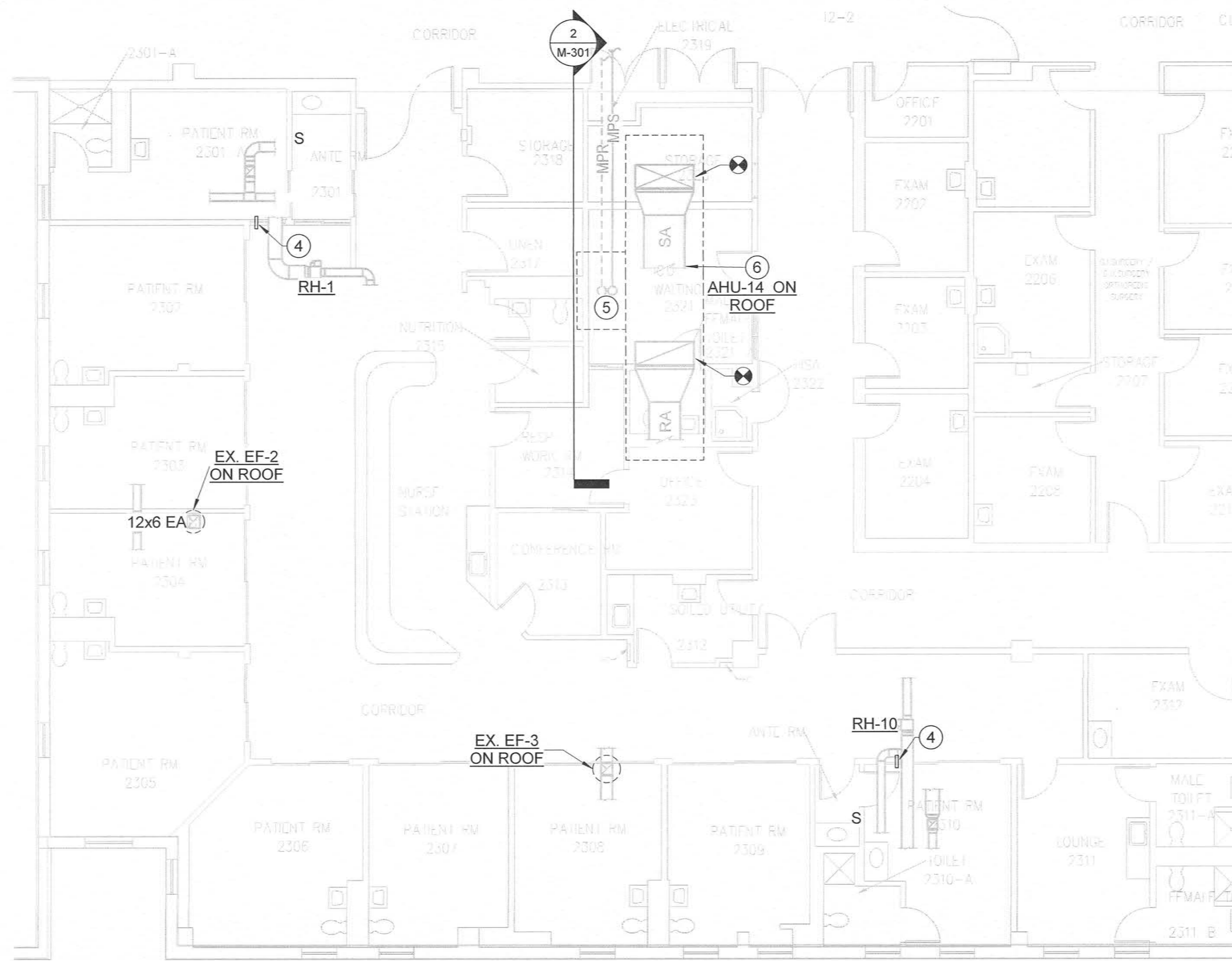
three inches = one foot
one and one half inches = one foot
one inch = one foot
three quarters inch = one foot
one half inch = one foot
one quarter inch = one foot
three eighths inch = one foot
one eighth inch = one foot
one eighth inch = one foot



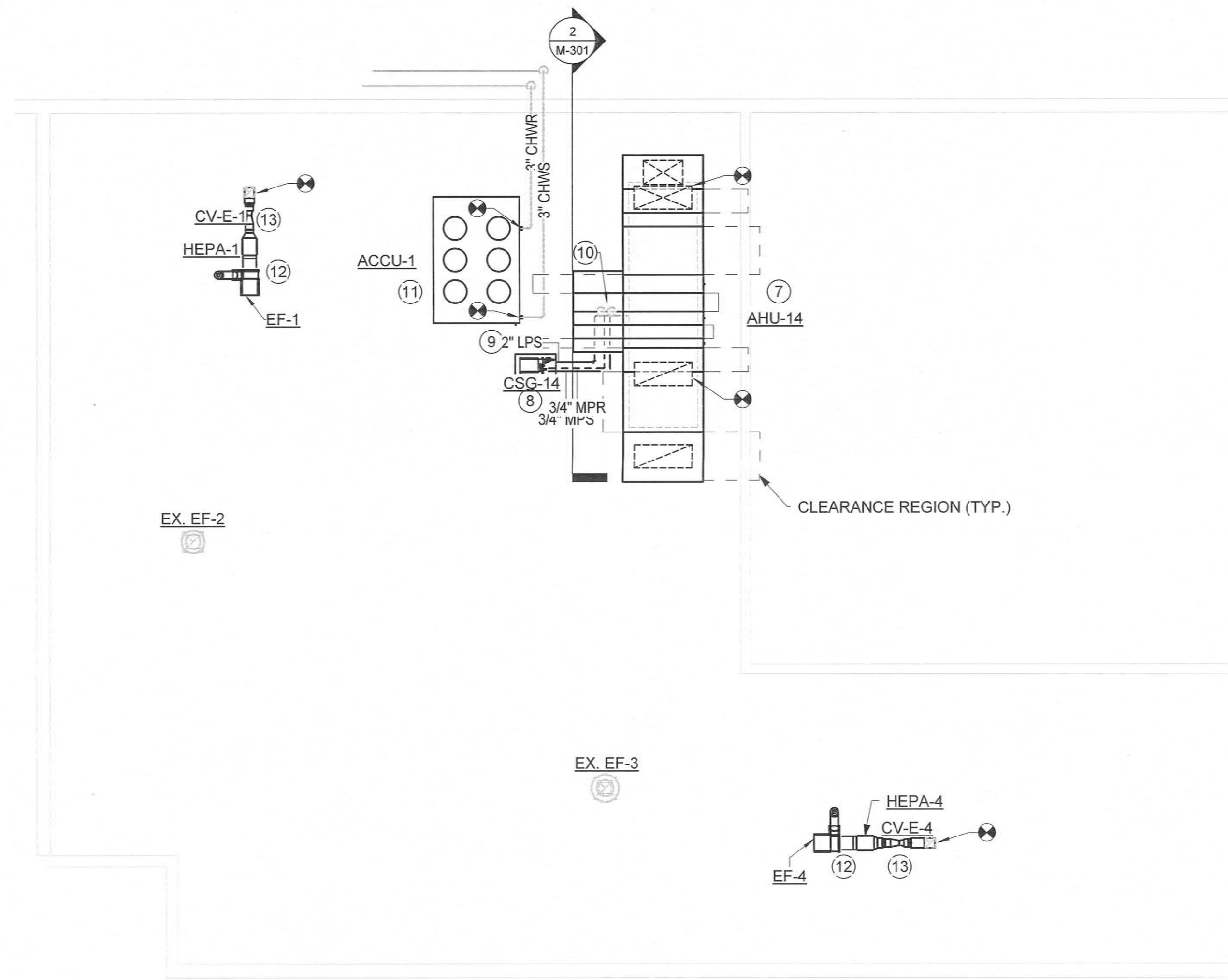
1 SECOND LEVEL MECHANICAL DEMOLITION PLAN
M-102 1/8" = 1'-0"



2 ROOF LEVEL MECHANICAL DEMOLITION PLAN
M-102 1/8" = 1'-0"

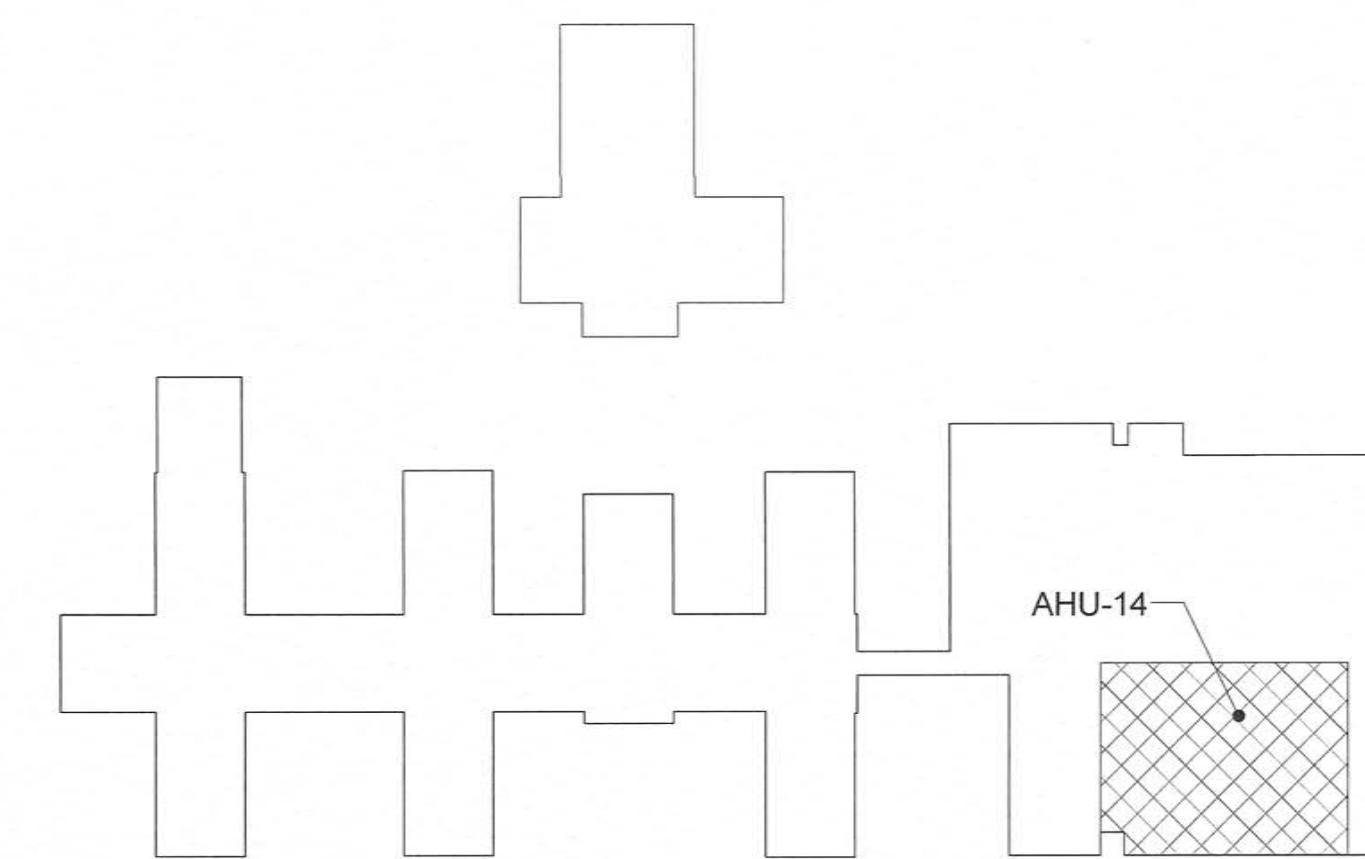


3 SECOND LEVEL MECHANICAL NEW WORK PLAN
M-102 1/8" = 1'-0"



4 ROOF LEVEL MECHANICAL NEW WORK PLAN
M-102 1/8" = 1'-0"

- GENERAL NOTES
- PROVIDE INFECTION CONTROL MEASURES PER FAYETTEVILLE VAMC REQUIREMENTS DURING ALL WORK IN THIS AREA.
 - COORDINATE WITH THE COR FOR REPLACEMENT OF AHU-14 A 4-DAY PERIOD.
 - PROVIDE MINIMUM PITCH SUFFICIENT TO INSURE ADEQUATE VENTING AND DRAINAGE FOR CHW PIPING.
 - PROVIDE 1/2" DRAIN VALVES AND CAPPED CONNECTIONS AT LOW POINTS IN PIPING SYSTEMS FOR DRAINING FOR CHW PIPING.
 - PITCH STEAM AND GRAVITY CONDENSATE PIPING. MINIMUM 1" IN 40' IN DIRECTION OF FLOW, UNLESS OTHERWISE INDICATED.
 - CONDENSATE RETURN MAIN SHALL PITCH DOWN IN DIRECTION OF FLOW A MINIMUM OF 1" IN 20'.
 - COORDINATE DUCT CLEANING SCOPE WITH COR PER SPEC SECTION 23 01 30.
 - UNLESS NOTED OTHERWISE, ALL NEW PIPE SIZES SHALL BE THE SAME SIZE AS WHAT WAS DEMOLISHED.
 - THE CONTRACTOR SHALL COVER THE SMOKE DETECTORS IN THE IMMEDIATE AREA OF WORK WITH PAPER BAGS TO PREVENT ACCIDENTAL ACTIVATION. AT THE CONTRACTOR'S OPTION, THE SMOKE DETECTORS CAN BE TURNED OFF BY THE VA BY COORDINATING AT LEAST 24 HOURS IN ADVANCE WITH THE COR. HOWEVER, IF THE SMOKE DETECTORS ARE SHUT DOWN FOR MORE THAN 4 HOURS A FIRE WATCH MUST BE IMPLEMENTED.
 - THE CONTRACTOR SHALL TAKE ALL PRECAUTIONS TO PREVENT DAMAGE TO AND/OR TRIGGERING SPRINKLER HEADS. AT THE CONTRACTOR'S OPTION, THE SPRINKLER SYSTEM CAN BE DISABLED BY THE VA, ON A FLOOR BY FLOOR BASIS. THE CONTRACTOR SHALL COORDINATE AT LEAST 24 HOURS IN ADVANCE WITH THE COR IF THIS OPTION IS USED. HOWEVER, IF THE SPRINKLERS ARE SHUT DOWN FOR MORE THAN 4 HOURS A FIRE WATCH MUST BE IMPLEMENTED.
- KEY (#) NOTES
- REMOVE AIR HANDLER AND PIPING CHASE COMPLETE ALONG WITH DUCTWORK AND PIPING TO ROOF PENETRATION. EXISTING ROOF CURB TO REMAIN.
 - REMOVE EXHAUST FAN WITH HEPA FILTER. EXISTING DUCTWORK AND ROOF CURB TO REMAIN.
 - REMOVE EXISTING CHILLER AND CONTROLS COMPLETE. EXISTING STEEL SUPPORT FRAME AND CHILLED WATER PIPES TO REMAIN FOR NEW CHILLER.
 - PROVIDE BALL-IN-WALL VISUAL ROOM PRESSURE SENSOR ALONG WITH DDC ROOM PRESSURE SENSOR BACK TO CAMPUS BMS. EXTEND CONTROL POWER TO ROOM PRESSURE SENSOR.
 - EXISTING MEDIUM PRESSURE STEAM/CONDENSATE UP TO ROOF THROUGH PIPE CHASE AND CURB.
 - PROVIDE NEW DUCT STATIC PRESSURE SENSOR 2/3 DOWN THE SUPPLY DUCT. COORDINATE EXACT LOCATION WITH COR. REMOVE EXISTING SENSOR.
 - PROVIDE NEW AIR HANDLER WITH ADAPTER CURB WITH SERVICE PLATFORM AND REMOVABLE HAND RAILS TO FIT ON EXISTING ROOF CURB. CONNECT TO EXISTING DUCT AT ROOF PENETRATION. PROVIDE PIPE CHASE IN CURB TO COVER EXISTING ROOF OPENING AND FOR PIPING CONNECTIONS.
 - PROVIDE NEW STEAM TO STEAM CLEAN STEAM GENERATOR, CSG-14, WITH OUTDOOR ENCLOSURE TO SERVE AHU-14. REFER TO PLUMBING PLANS FOR WATER CONNECTION TO CSG-14 FOR AHU-14. SEAL PENETRATION OF ROOF CURB WATER TIGHT. PROVIDE 5 WFT HEAT TRACE CIRCUITED WITH OTHER PIPES.
 - ROUTE 2" CLEAN STEAM FROM CSG-14 TO HUMIDIFIER SECTION OF AHU-14 SIZED PER MANUFACTURER'S RECOMMENDATIONS. SEAL PENETRATION OF ROOF CURB WATER TIGHT. PROVIDE 5 WFT HEAT TRACE CIRCUITED WITH OTHER PIPES.
 - CONNECT TO EXISTING MEDIUM PRESSURE STEAM/CONDENSATE WITH 3/4" PIPE FOR CSG-14. SEAL PENETRATION OF ROOF CURB WATER TIGHT. PROVIDE 5 WFT HEAT TRACE CIRCUITED WITH OTHER PIPES.
 - PROVIDE NEW CHILLER ON EXISTING STEEL FRAME. CONNECT TO EXISTING CHILLED WATER PIPES. RE-INSTALL OR EXTEND EXISTING HEAT TRACING AS REQUIRED FOR NEW CHILLER PIPING CONNECTIONS.
 - PROVIDE NEW UPBLAST EXHAUST FAN WITH IN-LINE HEPA FILTER. CONNECT TO DUCT THROUGH CAP ON EXISTING ROOF CURB. PROVIDE 10' DISCHARGE STACK WITH 3,500 FPM DISCHARGE. REFER TO DETAIL 9/H-501.
 - PROVIDE NEW VENTURI TYPE CONTROL VALVE FOR OUTDOOR INSTALLATION. MOUNT WITH CONTROL BOX AT BOTTOM OF VALVE. PROVIDE WITH PRESSURE SWITCH INSTALLED UNDER WEATHER COVER FOR ASSOCIATED EXHAUST FAN.



BUILDING 1 & 3 KEY PLAN

100% CONSTRUCTION DOCUMENTS

CONSULTANTS:		PROJECT MANAGER:		Project Number 2013121	Scale As indicated	Drawing Title MECHANICAL PLANS AHU-14	Project Title REPLACE AIR HANDLING UNITS 3, 14, & 34	VA Project Number 246-13-C-0106	Office of Facilities Management Department of Veterans Affairs
Amended Per Owner's Comments No Rev Clouds 10/17/2014		Raleigh, NC Indianapolis, IN Philadelphia, PA Fort Collins, CO Virginia Beach, VA (919) 858-7420 www.acg-pa.com NC License # C-1846				Approved: Project Director	Location 2300 RAMSEY STREET, FAYETTEVILLE, NC 28301	Building Number 1 AND 3	
Revisions		Date					Date 08/28/2014	Checked DJR	
							Drawn SPG	Dwg 7 of 18	