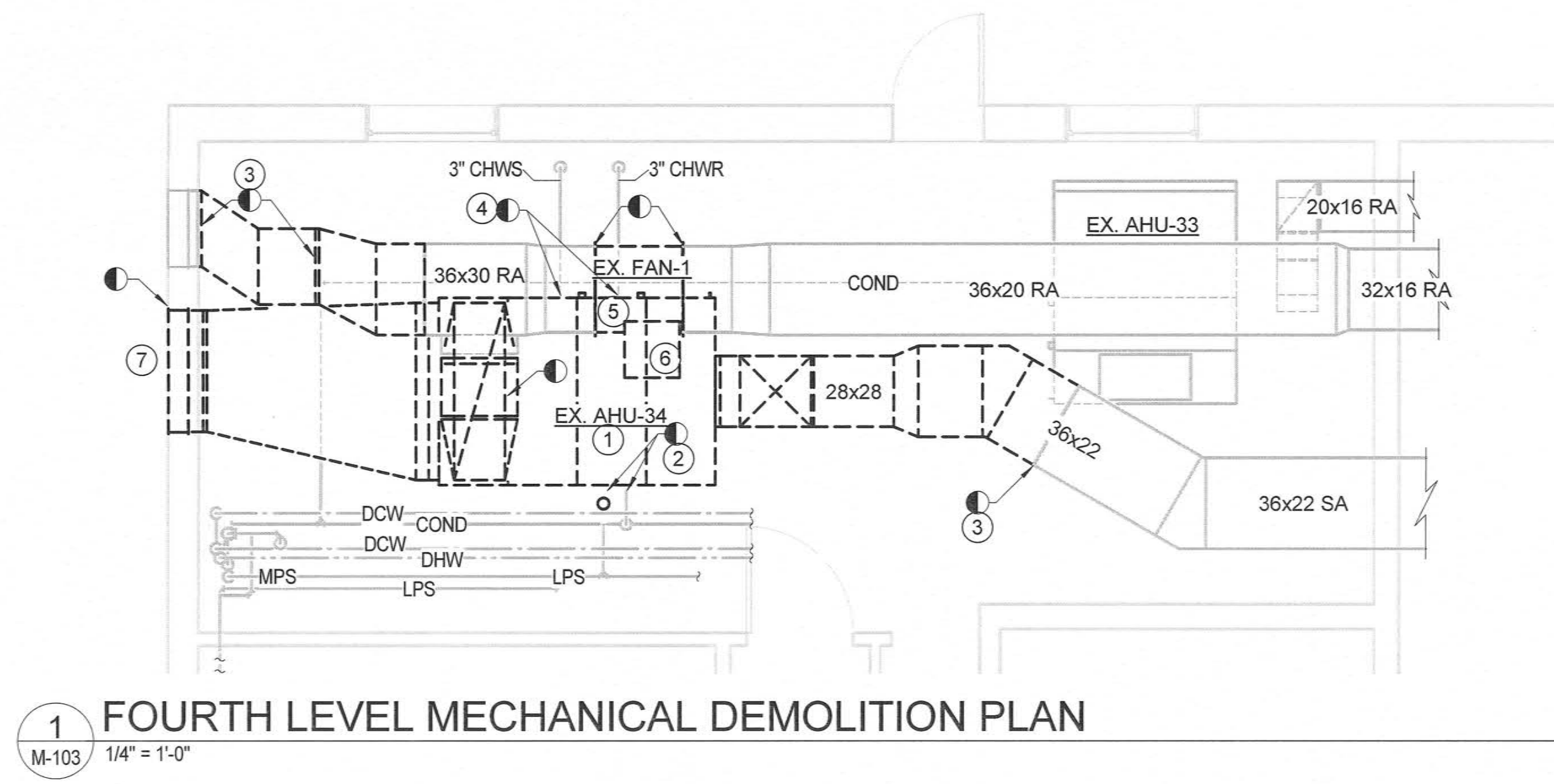
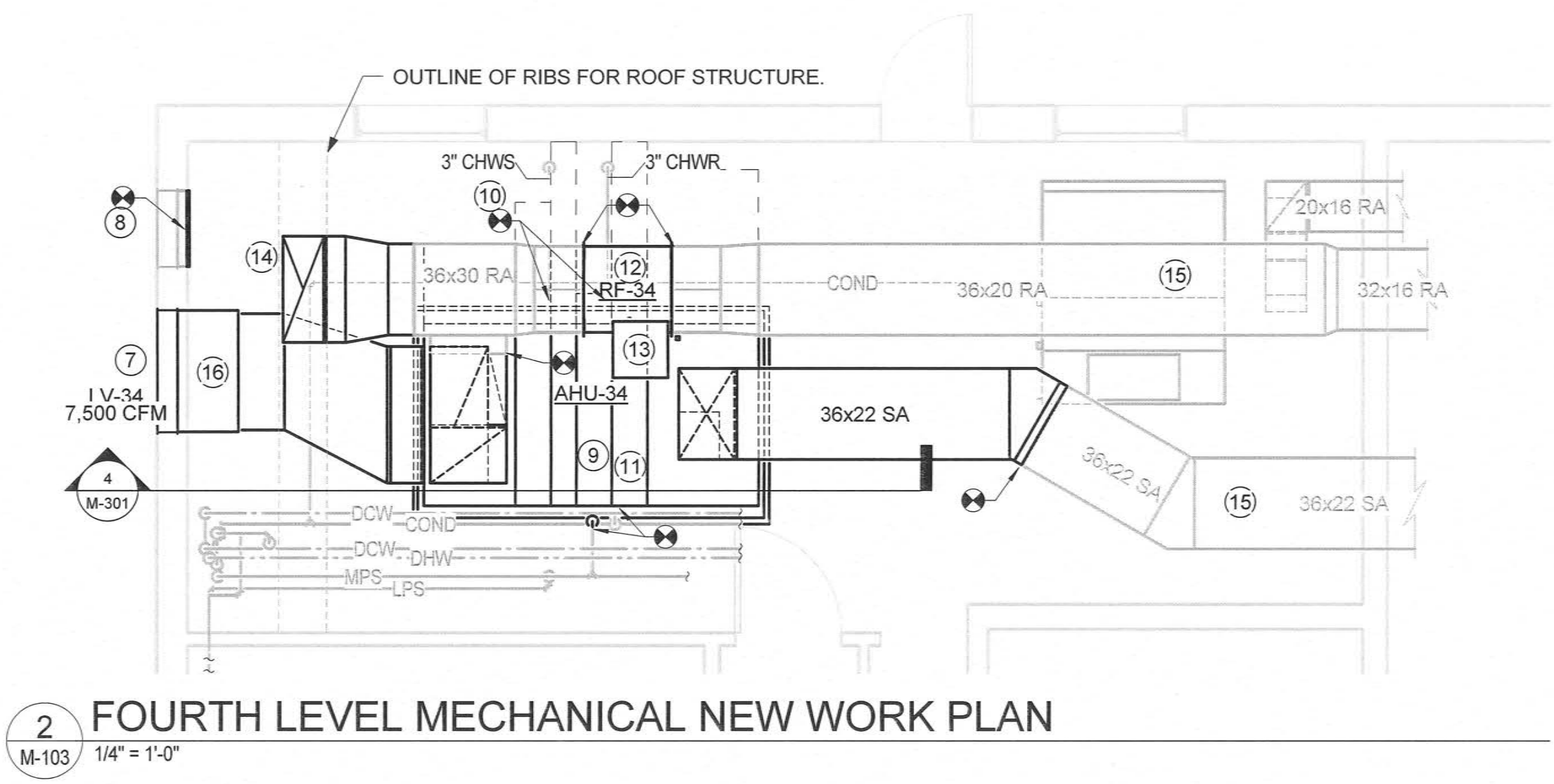


three inches = one foot  
one and one half inches = one foot  
one inch = one foot  
three quarters inch = one foot  
one half inch = one foot  
three eighths inch = one foot  
one quarter inch = one foot  
one eighth inch = one foot



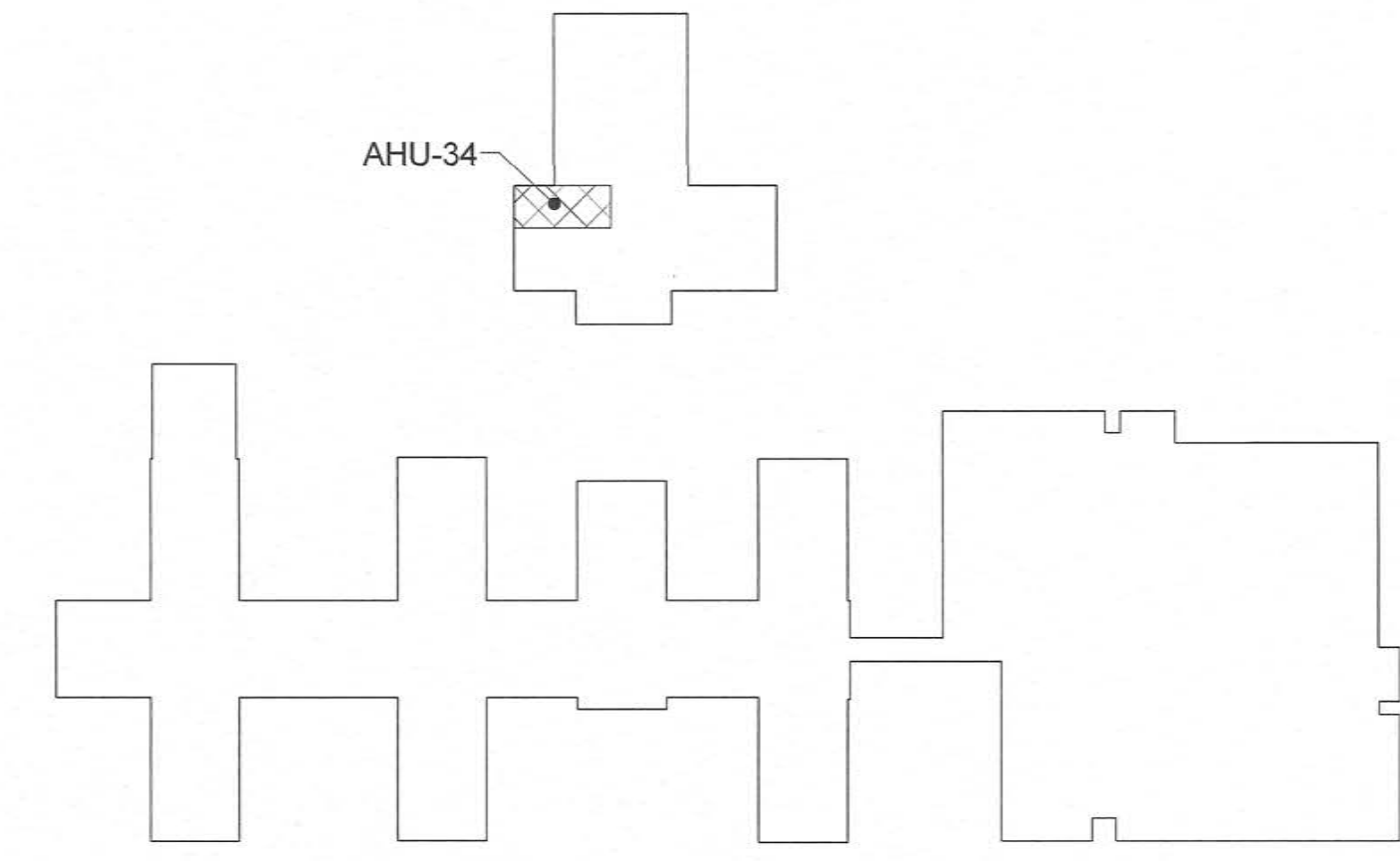
1 FOURTH LEVEL MECHANICAL DEMOLITION PLAN  
M-103 1/4" = 1'-0"



2 FOURTH LEVEL MECHANICAL NEW WORK PLAN  
M-103 1/4" = 1'-0"

- GENERAL NOTES
- NEW WORK IN THIS AREA IS TO BE CONSTRAINED TO 1 WEEK AND COORDINATED WITH THE COR AROUNDUSE OF THE AUDITORIUM.
  - PROVIDE MINIMUM PITCH SUFFICIENT TO INSURE ADEQUATE VENTING AND DRAINAGE FOR CHW PIPING.
  - PROVIDE 1/2" DRAIN VALVES AND CAPPED CONNECTIONS AT LOW POINTS IN PIPING SYSTEMS FOR DRAINING FOR CHW PIPING.
  - PITCH STEAM AND GRAVITY CONDENSATE PIPING, MINIMUM 1" IN 40' IN DIRECTION OF FLOW, UNLESS OTHERWISE INDICATED.
  - CONDENSATE RETURN MAIN SHALL PITCH DOWN IN DIRECTION OF FLOW A MINIMUM OF 1" IN 20'.
  - COORDINATE DUCT CLEANING SCOPE WITH COR PER SPEC SECTION 23 01 30.
  - UNLESS NOTED OTHERWISE, ALL NEW PIPE SIZES SHALL BE THE SAME SIZE AS WHAT WAS DEMOLISHED.
  - THE CONTRACTOR SHALL COVER THE SMOKE DETECTORS IN THE IMMEDIATE AREA OF WORK WITH PAPER BAGS TO PREVENT ACCIDENTAL ACTIVATION. AT THE CONTRACTOR'S OPTION, THE SMOKE DETECTORS CAN BE TURNED OFF BY THE VA BY COORDINATING AT LEAST 24 HOURS IN ADVANCE WITH THE COR. HOWEVER, IF THE SMOKE DETECTORS ARE SHUT DOWN FOR MORE THAN 4 HOURS A FIRE WATCH MUST BE IMPLEMENTED.
  - THE CONTRACTOR SHALL TAKE ALL PRECAUTIONS TO PREVENT DAMAGE TO AND/OR TRIGGERING SPRINKLER HEADS. AT THE CONTRACTOR'S OPTION, THE SPRINKLER SYSTEM CAN BE DISABLED BY THE VA, ON A FLOOR BY FLOOR BASIS. THE CONTRACTOR SHALL COORDINATE AT LEAST 24 HOURS IN ADVANCE WITH THE COR IF THIS OPTION IS USED. HOWEVER, IF THE SPRINKLERS ARE SHUT DOWN FOR MORE THAN 4 HOURS A FIRE WATCH MUST BE IMPLEMENTED.
  - COORDINATE LOCATION OF CO2 SENSOR, T-STAT AND OVERRIDE BUTTON WITH COR.
- KEY (#) NOTES

- REMOVE AIR HANDLER, CONDENSATE DRAIN PIPING AND SUPPORTS COMPLETE. CONCRETE PAD IS EXISTING TO REMAIN.
- REMOVE CWS/CWR PIPING, INSULATION, HANGERS AND SUPPORTS COMPLETE TO POINT INDICATED.
- REMOVE DUCTWORK, INSULATION, HANGERS AND SUPPORTS COMPLETE TO POINT INDICATED.
- REMOVE MPS/MPC PIPING, TRAP, INSULATION, HANGERS AND SUPPORTS COMPLETE TO POINT INDICATED.
- REMOVE INLINE RETURN FAN, FLEXIBLE DUCT CONNECTORS, HANGERS AND SUPPORTS COMPLETE. TEMPORARY SUPPORT DUCTWORK FOR RETURN FAN REPLACEMENT.
- REMOVE INVERTER DUTY MOTOR, SHEAVE, BELT AND ASSOCIATED APPURTENANCES. ITEMS REMOVED SHALL BE TURNED OVER TO HOSPITAL FOR REPLACEMENT STOCK.
- DEMOLISH EXISTING OA LOUVER FOR OPENING TO BRING IN NEW AHU AND PROVIDE NEW LOUVER. AHU TO BE CRANED IN WITH A LIFT PLAN SUBMITTED.
- BLANK OFF EXISTING LOUVER OPENING.
- PROVIDE AIR HANDLER AS SCHEDULED, VIBRATION ISOLATORS AND SUPPORTS COMPLETE. MOUNT ON EXISTING CONCRETE PAD. PROVIDE WITH AUXILIARY DRAIN PAN ROUTED TO NEAREST FLOOR DRAIN.
- PROVIDE CHWS/CHWR PIPING, INSULATION, HANGERS AND SUPPORTS.
- PROVIDE MPS/MPC PIPING, INSULATION, HANGERS AND SUPPORTS.
- PROVIDE INLINE EXHAUST FAN AS SCHEDULED, HANGERS AND SUPPORTS COMPLETE. SUPPORT FROM STRUCTURE WITH SPRING VIBRATION ISOLATORS. REFER TO DETAIL 3 ON DRAWING M-501. PROVIDE WITH EQUIPMENT FLEXIBLE DUCT CONNECTORS.
- COORDINATE RETURN FAN MOTOR, ORIENT SO THAT MOTOR IS IN HORIZONTAL POSITION. FINALIZE ORIENTATION WITH FACILITIES PERSONNEL.
- ROUTE EXHAUST DUCT UP TO GRAVITY HOOD, GH-34, ON ROOF.
- REINSULATE EXISTING DUCT.
- PROVIDE 24" DEEP REINFORCED SHEET METAL PLENUM FULL SIZE OF LOUVER. REINFORCING SHALL BE MINIMUM 2"x2"x1/4" ANGLE IRON.



BUILDING 1 & 3 KEY PLAN

100% CONSTRUCTION DOCUMENTS

CONSULTANTS:		PROJECT MANAGER:		Project Number 2013121	Scale As indicated	Drawing Title MECHANICAL PLANS AHU-34	Project Title REPLACE AIR HANDLING UNITS 3, 14, & 34	VA Project Number 246-13-C-0106	Office of Facilities Management  Department of Veterans Affairs
						Approved: Project Director	Location 2300 RAMSEY STREET, FAYETTEVILLE, NC 28301	Building Number 1 AND 3	
							Date 08/28/2014	Drawing Number M-103	
							Checked DJR	Dwg. 8 of 18	
Amended Per Owner's Comments No Rev Clouds 10/17/2014		NORTH CAROLINA PROFESSIONAL SEAL SEAL 3977 NICHOLAS P. GEORGE REGISTERED PROFESSIONAL MECHANICAL ENGINEER 4/1/14		APOGEE Consulting Group, PA www.acg-pa.com NC License # C-1848					
Revisions		Date							