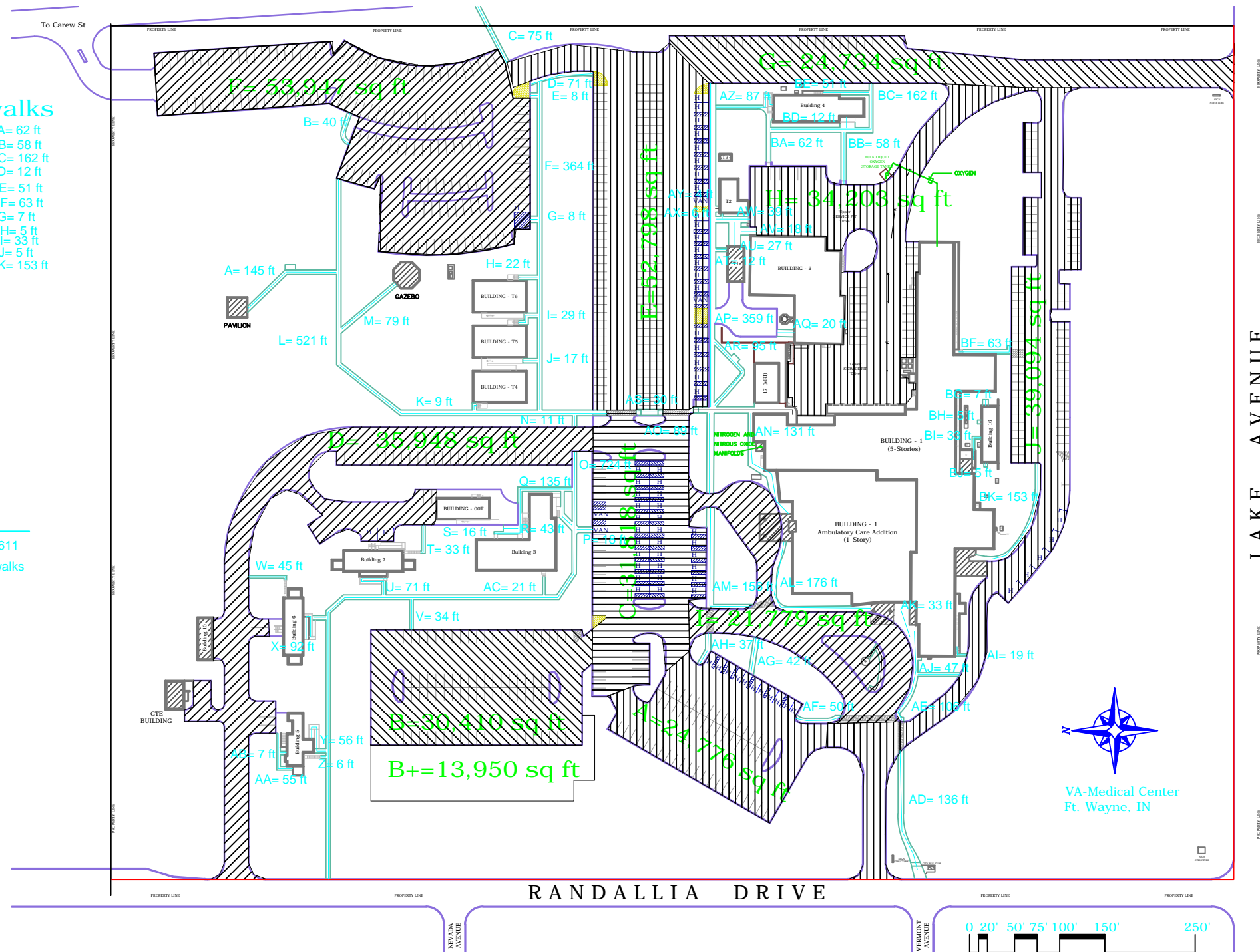


A= 145 ft	AA= 55 ft	BA= 62 ft
B= 40 ft	AB= 7 ft	BB= 58 ft
C= 75 ft	AC= 21 ft	BC= 162 ft
D= 71 ft	AD= 136 ft	BD= 12 ft
E= 8 ft	AE= 106 ft	BE= 51 ft
F= 364 ft	AF= 50 ft	BF= 63 ft
G= 8 ft	AG= 42 ft	BG= 7 ft
H= 22 ft	AH= 37 ft	BH= 5 ft
I= 29 ft	AI= 19 ft	BI= 33 ft
J= 17 ft	AJ= 47 ft	BJ= 5 ft
K= 9 ft	AK= 33 ft	BK= 153 ft
L= 521 ft	AL= 176 ft	
M= 79 ft	AM= 156 ft	
N= 11 ft	AN= 131 ft	
O= 724 ft	AO= 89 ft	
P= 18 ft	AP= 359 ft	
Q= 135 ft	AQ= 20 ft	
R= 43 ft	AR= 95 ft	
S= 16 ft	AS= 30 ft	
T= 33 ft	AT= 12 ft	
U= 71 ft	AU= 27 ft	
V= 34 ft	AV= 18 ft	
W= 45 ft	AW= 39 ft	
X= 92 ft	AX= 6 ft	
Y= 56 ft	AY= 4 ft	
Z= 6 ft	AZ= 87 ft	

2672 1802 611
5085 linear ft of interior sidewalks



Paved areas

A=24,776 sq ft
B=30,410 sq ft
B+=13,950 sq ft
C=31,818 sq ft
D= 35,948 sq ft
E=52,798 sq ft
F= 53,947 sq ft
G= 24,734 sq ft
H= 34,203 sq ft
I= 21,779 sq ft
J= 39,094 sq ft

= 363,457 sq ft

Perimeter sidewalks
Randallia= 1,245 ft
Lake=947 ft

= 1,192 ft.

= 8.343 acres

Based on 27 acre site plan