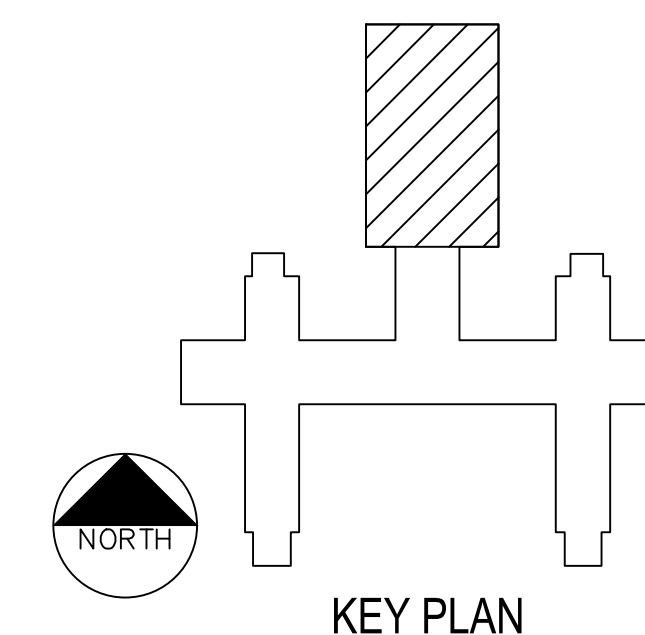



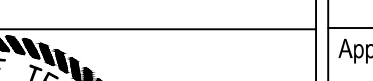




1. ALL EXISTING LAYOUTS INDICATED ON THESE DOCUMENTS ARE BASED ON INFORMATION AVAILABLE AND MAY INCLUDE INACCURACIES AND BE INCOMPLETE.
2. CONTRACTORS SHALL BE SOLELY RESPONSIBLE FOR VERIFYING ACTUAL CONDITIONS AT THE SITE AND NOTING ALL DISCREPANCIES TO THE OWNER PRIOR TO WORK COMMENCEMENT; THEREAFTER, THE CONTRACTOR ACCEPTS FULL RESPONSIBILITY FOR ALL EXISTING CONDITIONS AND SHALL BE SOLELY RESPONSIBLE FOR MAKING ALL SUITABLE ADJUSTMENTS NECESSARY TO ACCOMMODATE NEW WORK AT NO ADDITIONAL COST TO THE OWNER; ANY SUCH ADJUSTMENTS SHALL BE COORDINATED WITH THE OWNER AND ENGINEER.
3. CONTRACTOR SHALL COORDINATE ALL WORK WITH OTHER TRADES AND INCLUDE ALL NECESSARY MODIFICATIONS TO ACCOMMODATE THEIR WORK.
4. ALL EQUIPMENT AND MATERIALS INDICATED TO BE REUSED OR RELOCATED SHALL BE CLEANED AND REPAIRED OF ANY DAMAGE INCURRED AS A RESULT OF REMOVAL PRIOR TO RE-INSTALLATION.
5. ALL EXISTING MECHANICAL SYSTEMS THAT REQUIRE REMOVAL AND RELOCATION AS A RESULT OF THE NEW CONSTRUCTION SHALL REMAIN IN SERVICE, AS PER THE ORIGINAL DESIGN INTENT, FOLLOWING COMPLETION OF THE ADDITION CONSTRUCTION.
6. ACTIVE HVAC EQUIPMENT DUCTS, PIPING, ELECTRICAL, ETC. NOT SHOWN NOR INDICATED SHALL REMAIN.
7. CONTRACTOR SHALL PATCH AND REPAIR ALL WALLS, FLOORS, CEILINGS, ETC. THAT ARE AFFECTED BY THE NEW WORK; PATCHING MATERIALS AND FINISH SHALL MATCH THE EXISTING OR NEW WORK IN THE IMMEDIATE VICINITY.
8. ALL APPURTENANCES, EQUIPMENT, AND LABOR NOT SPECIFICALLY CALLED FOR IN THE SPECIFICATIONS OR REQUIRED BY THE CONTRACTOR TO FULFILL THE DESIGN INTENT OF THE SAME, SHALL BE CONSIDERED INCIDENTAL TO THE WORK SCOPE AND THEREBY REQUIRED BY THE CONTRACTOR.
9. THE CONTRACTOR SHALL PROVIDE NEW FIRE PROTECTION PIPING, HEADS, SPRINKLERS, ETC. FOR ALL AREAS OF WORK THAT THE CEILING GRID SYSTEM IS REMOVED AND REPLACED. THE CONTRACTOR SHALL SUBMIT DRAWINGS PREPARED BY A FIRE PROTECTION ENGINEER FOR APPROVAL BY THE CONTRACTING OFFICER. THE INSTALLATION SHALL BE BY A LICENSED CONTRACTOR.

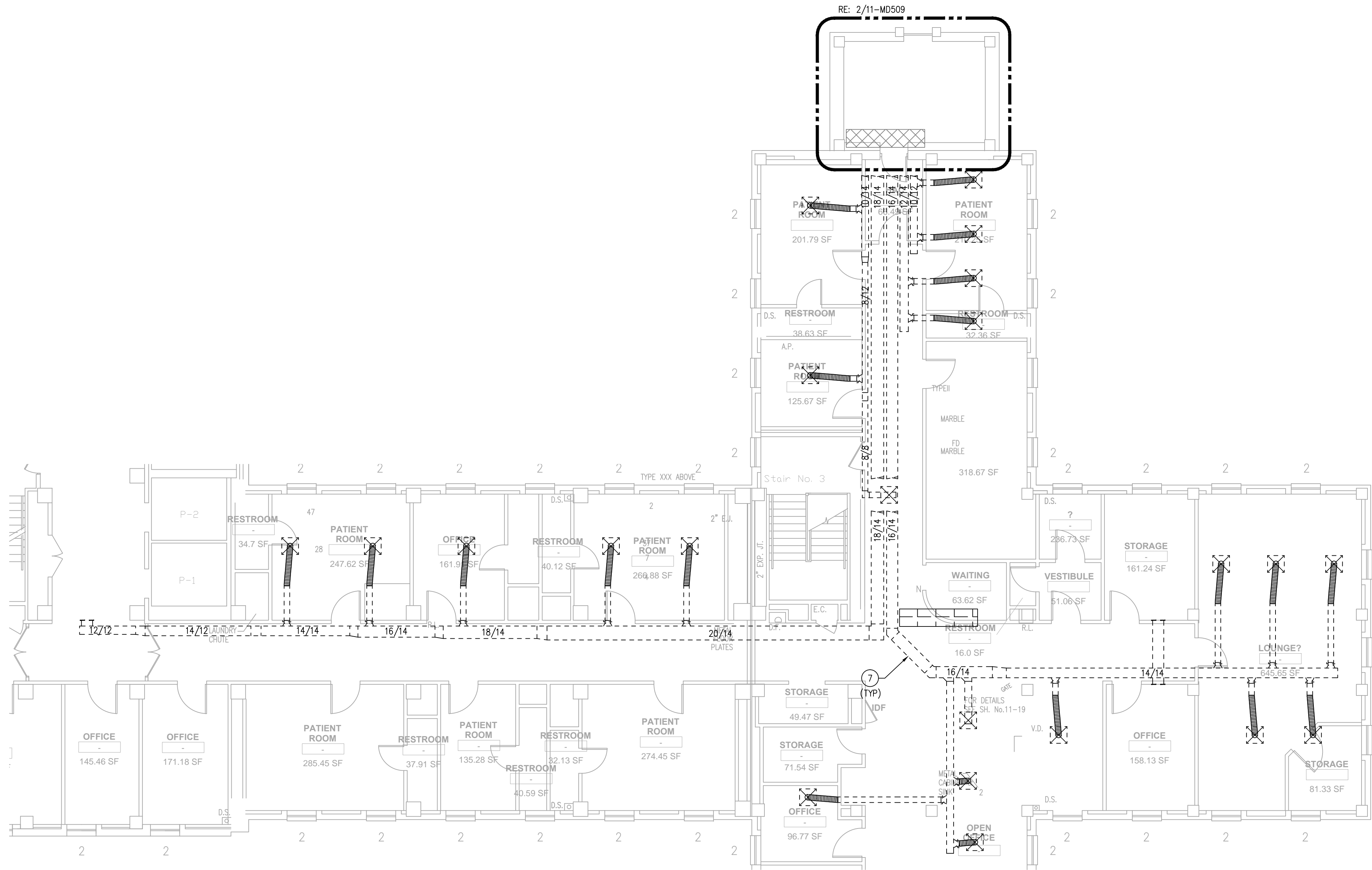
- (1) DEMOLISH EXISTING ROOF MOUNTED AIR HANDLING UNIT INCLUDING BASE RAILS, EQUIPMENT SUPPORTS, CONDENSATE PIPING, ETC.
- (2) HOT TAP NEW SHUT-OFF VALVES ABOVE ROOF PENETRATION. DEMOLISH HYDRONIC PIPING BACK TO VALVES INCLUDING PIPE SUPPORTS, INSULATION, AND APPURTENANCES.
- (3) DEMOLISH ROOF MOUNTED DUCTWORK, DUCT SUPPORTS, APPURTENANCES, ETC.
- (4) DEMOLISH OA DUCTWORK BACK TO ELBOW. REMAINING OA DUCTWORK TO REMAIN AND BE REUSED.
- (5) DEMOLISH OA DUCT BACK TO MAIN.
- (6) ENSURE DUCT STUB THRU ROOF IS SUFFICIENT LENGTH TO CONNECT NEW DUCTWORK.
- (7) DEMOLISH ALL DUCTWORK SHOWN HATCHED. THIS INCLUDES HANGERS, SUPPORTS, AND FLEXIBLE DUCTWORK. SALVAGE DINING ROOM SUPPLY AIR DEVICES FOR REUSE IN NEW WORK. DEMOLISH RETURN AIR GRILLES IN DINING ROOM AND REPAIR CEILING TO MATCH EXISTING.
- (8) EXTENT OF DEMOLITION SHOWN.
- (9) DEMOLISH DUCTWORK UP THRU ROOF. ROOF PENETRATION TO BE REUSED FOR NEW DUCTWORK.
- (10) DEMOLISH EXISTING EXHAUST HOOD AND ASSOCIATED DUCTWORK AND CONTROLS. SALVAGE EXISTING ANSUL FIRE SUPPRESSION SYSTEM FOR USE IN NEW HOOD. ANSUL SYSTEM SHALL BE SERVICED AND REPAIRED AS NECESSARY BY A CERTIFIED FIRE PROTECTION CONTRACTOR.
- (11) DEMOLISH ALL REMAINING COMPONENTS FROM OLD MAKE-UP AIR EQUIPMENT ON ROOF. REPAIR ROOF TO MATCH EXISTING AS REQUIRED. EXISTING DUCTWORK DOWNSTREAM OF OLD UNIT TO BE DEMOLISHED. UPSTREAM DUCTWORK FROM THE EXTERIOR TO REMAIN AND BE RE-USED.
- (12) DEMOLISH EXISTING EXHAUST FAN AND ASSOCIATED DUCTWORK AND CONTROLS ASSOCIATED WITH THE EXISTING EXHAUST HOOD. REPAIR ROOF AS NECESSARY TO MATCH EXISTING.
- (13) DEMOLISH EXISTING DUCTWORK BELOW ROOF DECK IN CEILING SPACE OF THIRD FLOOR. DUCTWORK TURNS UP TO SERVE 4TH THRU 6TH FLOORS. DEMOLITION OF DUCT RISERS WILL REQUIRE EXISTING SHAFT WALL TO BE DEMOLISHED ON THE 4TH, 5TH, AND 6TH FLOOR. THE CONTRACTOR SHALL RE-BUILD THE SHAFT WALLS UPON COMPLETION OF THE DUCT INSTALLATION.
- (14) DEMOLISH EXISTING FIRE DAMPERS IN FLOOR AND IN WALL ON SUPPLY AND RETURN DUCT. THIS INCLUDES FIRE DAMPERS ON THE 4TH, 5TH, AND 6TH FLOORS.



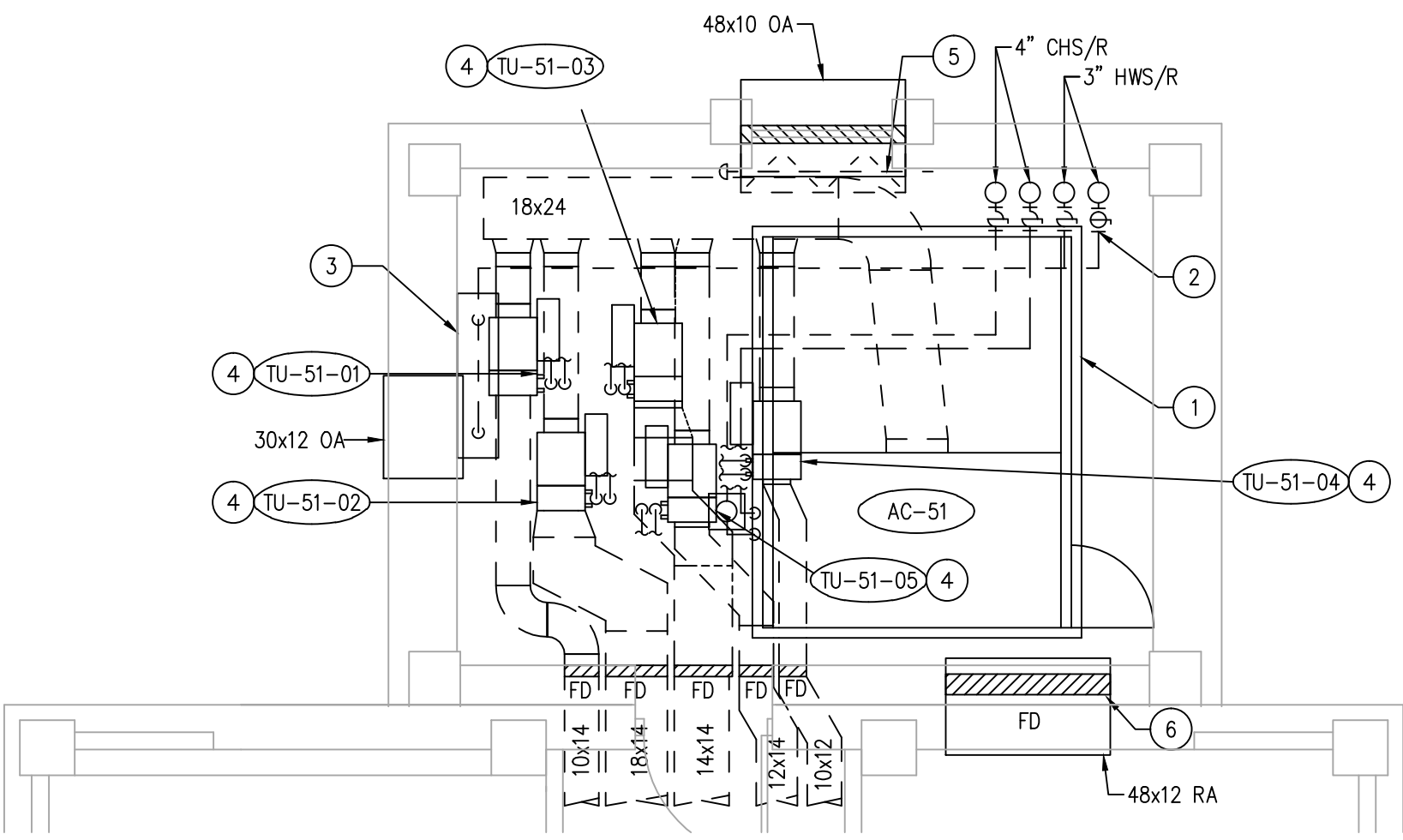
		CONSULTANTS:		ARCHITECT/ENGINEERS:		Approved: Assistant Director		Approved: Chief of Staff		Approved: Chief, Engineering		Drawing Title		Project Name		Project Number		Office of Construction and Facilities Management   Department of Veterans Affairs			
		 <b>RH SHACKELFORD, INC</b> SDVDSB		 <b>Goetting</b> Goetting & Associates, Inc. 12710 Research Blvd. Suite 355 Austin, Texas 78759 512/416-1854 FAX: 512/416-7547		 T.T. GOETTING, INC. T-903		Approved: Service Chief		Approved: Service Chief		FOURTH FLOOR MECHANICAL FLOOR PLAN AC-45,46,&47 DEMOLITION		KD AIR HANDLER REPLACEMENT (AHU) PROJECT - PHASE II		671A-09-110					
																Date					
																				07-15-13	
Revisions:		Date						Approved: Chief, Bio-Med		Approved: Chief, EMS		Approved: Chief, Infection Control		Location		Building Number		Checked		Drawn	
								Approved: Chief, IT		Approved: Chief, M&O		Approved: Chief, Police		Kerrville Veterans Hospital Veterans Affairs 2600 Memorial Blvd. Kerrville, TX 78028		11		ESW		PJR	
								Approved: Chief, Safety		Approved: Chief		Approved: Chief						11-MD508		Dwg. of	



three inches = one foot  
one and one half inches = one foot  
one inch = one foot  
three quarters inch = one foot  
one half inch = one foot  
three eighths inch = one foot  
one quarter inch = one foot  
one eighth inch = one foot



1 DEMOLITION FLOOR PLAN - AC-51  
SCALE: 1/8"=1'-0"



2 ENLARGED MECHANICAL ROOM FLOOR PLAN - AC-51  
SCALE: 1/4"=1'-0"

GENERAL NOTES

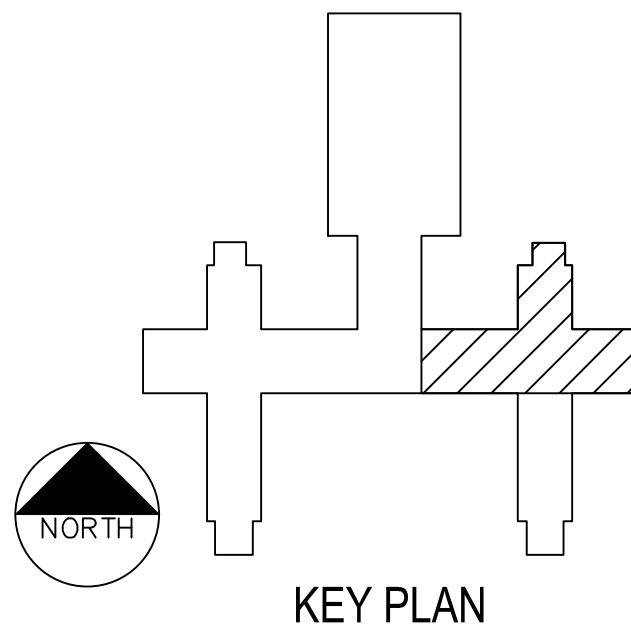
1. ALL EXISTING LAYOUTS INDICATED ON THESE DOCUMENTS ARE BASED ON INFORMATION AVAILABLE AND MAY INCLUDE INACCURACIES AND BE INCOMPLETE.
2. CONTRACTORS SHALL BE SOLELY RESPONSIBLE FOR VERIFYING ACTUAL CONDITIONS AT THE SITE AND NOTING ALL DISCREPANCIES TO THE OWNER PRIOR TO WORK COMMENCEMENT; THEREAFTER, THE CONTRACTOR ACCEPTS FULL RESPONSIBILITY FOR ALL EXISTING CONDITIONS AND SHALL BE SOLELY RESPONSIBLE FOR MAKING ALL SUITABLE ADJUSTMENTS NECESSARY TO ACCOMMODATE NEW WORK AT NO ADDITIONAL COST TO THE OWNER. ANY SUCH ADJUSTMENTS SHALL BE COORDINATED WITH THE OWNER AND ENGINEER.
3. CONTRACTOR SHALL COORDINATE ALL WORK WITH OTHER TRADES AND INCLUDE ALL NECESSARY MODIFICATIONS TO ACCOMMODATE THEIR WORK.
4. ALL EQUIPMENT AND MATERIALS INDICATED TO BE REUSED OR RELOCATED SHALL BE CLEANED AND REPAIRED OF ANY DAMAGE INCURRED AS A RESULT OF REMOVAL PRIOR TO RE-INSTALLATION.
5. ALL EXISTING MECHANICAL SYSTEMS THAT REQUIRE REMOVAL AND RELOCATION AS A RESULT THE NEW CONSTRUCTION SHALL REMAIN IN SERVICE, AS PER THE ORIGINAL DESIGN INTENT, FOLLOWING COMPLETION OF THE ADDITION CONSTRUCTION.
6. ACTIVE HVAC EQUIPMENT DUCTS, PIPING, ELECTRICAL, ETC. NOT SHOWN NOR INDICATED SHALL REMAIN.
7. CONTRACTOR SHALL PATCH AND REPAIR ALL WALLS, FLOORS, CEILINGS, ETC. THAT ARE AFFECTED BY THE NEW WORK; PATCHING MATERIALS AND FINISH SHALL MATCH THE EXISTING OR NEW WORK IN THE IMMEDIATE VICINITY.
8. ALL APPURTENANCES, EQUIPMENT, AND LABOR NOT SPECIFICALLY CALLED FOR IN THESE DRAWINGS OR SPECIFICATIONS, BUT NECESSARY TO FULFILL THE DESIGN INTENT OF THE SAME, SHALL BE CONSIDERED INCIDENTAL TO THE WORK SCOPE AND THEREBY REQUIRED BY THE CONTRACTOR.
9. THE CONTRACTOR SHALL PROVIDE NEW FIRE PROTECTION PIPING, HEADS, SPRINKLERS, ETC. FOR ALL AREAS OF WORK THAT THE CEILING GRID SYSTEM IS REMOVED AND REPLACED. THE CONTRACTOR SHALL SUBMIT DRAWINGS PREPARED BY A FIRE PROTECTION ENGINEER FOR APPROVAL BY THE CONTRACTING OFFICER. THE INSTALLATION WILL BE BY A LICENSED CONTRACTOR.

KEYED NOTES

- 1 AC-51 IS EXISTING TO REMAIN AS WELL AS ASSOCIATED CHILLED WATER AND CONDENSATE PIPING. DEMOLISH ASSOCIATED DUCTWORK, HANGERS, AND APPURTENANCES.
- 2 DEMOLISH HOT WATER PIPING BACK TO SHUT-OFF VALVE. REMOVE ALL INSULATION ON HOT & CHILLED WATER RISERS AND RE-INSULATE PER SPECIFICATIONS.
- 3 DEMOLISH HOT WATER VALVE RACK AND ASSOCIATED HOT WATER PIPING TO EACH TERMINAL UNIT. SALVAGE ALL VALVES, FITTINGS, AND APPURTENANCES AND RETURN TO OWNER.
- 4 SALVAGE TERMINAL UNITS IN MECHANICAL ROOM AND RETURN TO OWNER.
- 5 DEMOLISH OUTSIDE AIR DUCTWORK, DAMPER, AND ASSOCIATED CONTROLS. RETAIN LOUVER FOR FUTURE USE.
- 6 CAP AND SEAL EXISTING RETURN AIR GRILLE IN WALL.
- 7 DEMOLISH AC-51 SUPPLY AIR DUCTWORK, AIR DEVICES, APPURTENANCES, ETC.

CONFLICT LEGEND

- IT ----- COORDINATE RELOCATION OF IT EQUIPMENT/WIRING WITH OWNERS REPRESENTATIVE.
- ELECTRICAL ----- RELOCATE EXISTING CONDUIT TO ACCOMMODATE NEW DUCTWORK. IT SHALL BE THE CONTRACTOR'S RESPONSIBILITY TO CAREFULLY IDENTIFY EACH SERVICE PRIOR TO RELOCATION AND NOTIFY OWNER OF ANY INTERRUPTIONS REQUIRED. COORDINATE NEW LOCATION OF CONDUITS WITH OTHER TRADES.
- FIRE PROTECTION ----- RELOCATE EXISTING FIRE SPRINKLER PIPING TO ACCOMMODATE NEW DUCTWORK. COORDINATE NEW ROUTING IN FIELD WITH OTHER TRADES. NOTIFY OWNER PRIOR TO ANY SHUTDOWNS.
- HYDRONICS ----- RELOCATE EXISTING HYDRONIC PIPING TO ACCOMMODATE NEW DUCTWORK. COORDINATE NEW ROUTING WITH OTHER TRADES. ANY SYSTEMS DRAINAGE MUST BE COORDINATED WITH OWNER.
- MED GAS ----- RELOCATE EXISTING MED GAS PIPING TO ACCOMMODATE NEW DUCTWORK. COORDINATE SHUT-DOWN WITH OWNER.
- PLUMBING ----- RELOCATE EXISTING PLUMBING TO ACCOMMODATE NEW DUCTWORK. COORDINATE NEW PIPING WITH OTHER TRADES. NOTIFY OWNER PRIOR TO SHUTTING DOWN ANY FACILITIES.

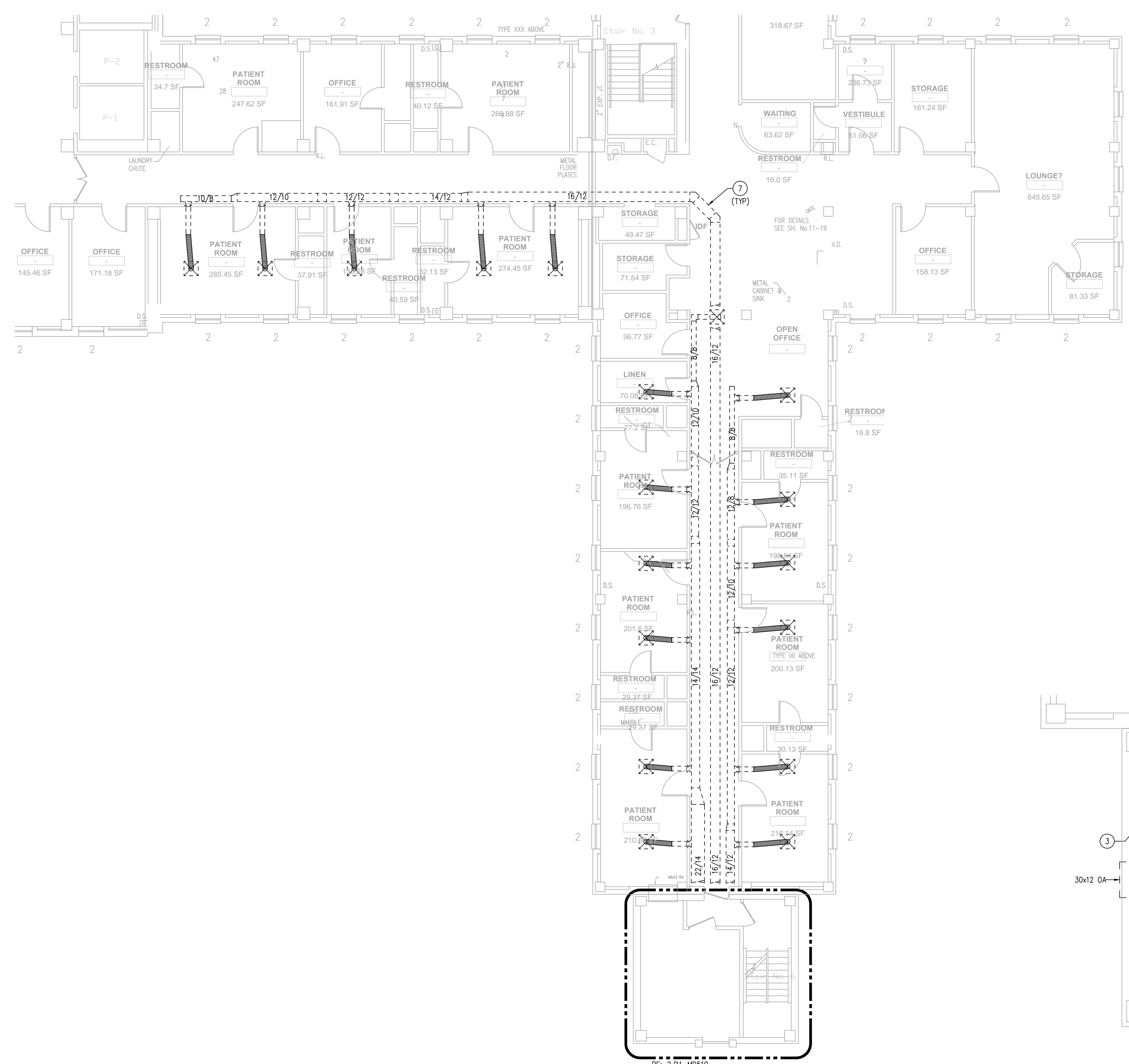


KEY PLAN

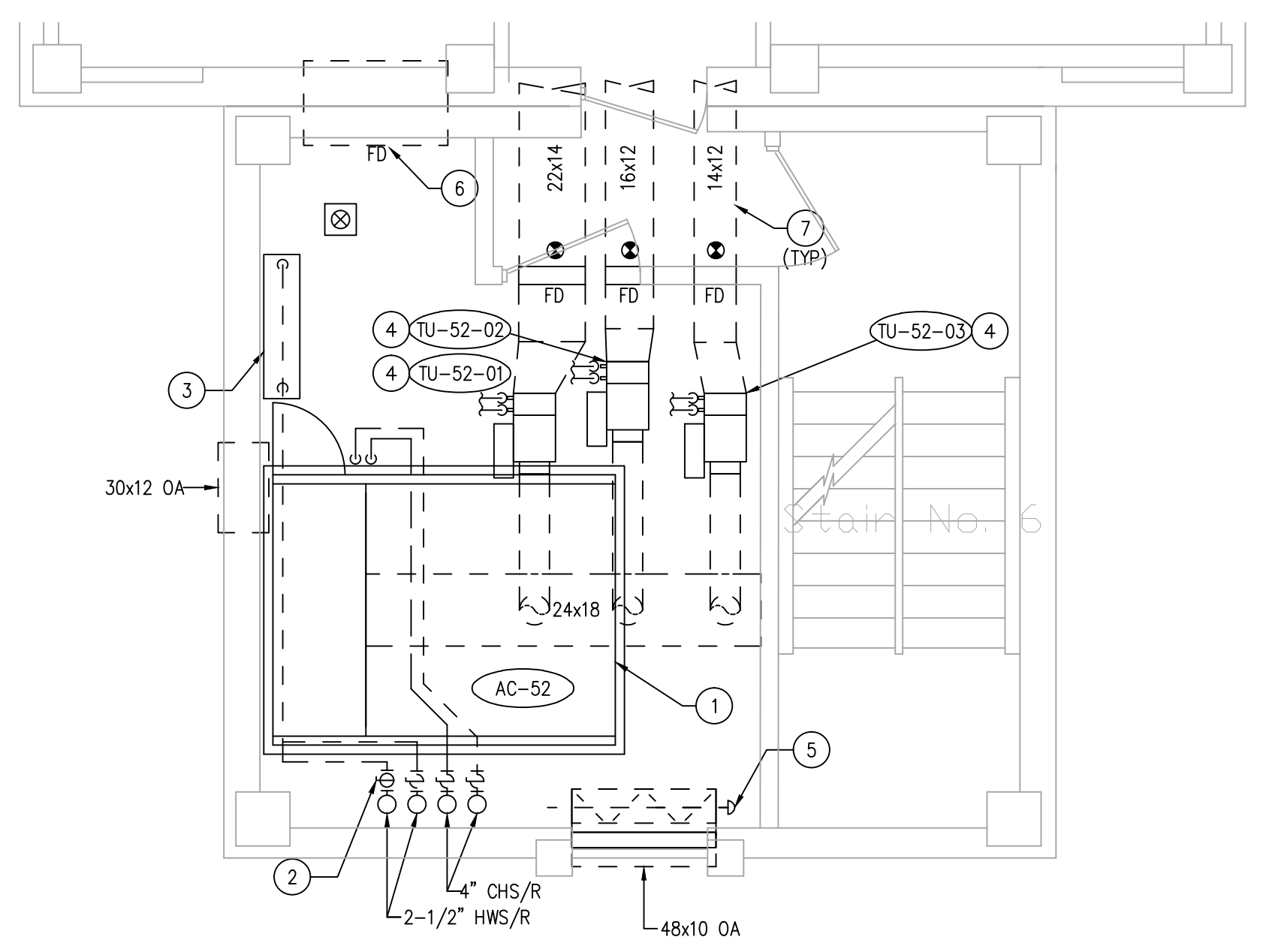
CONSULTANTS:		ARCHITECT/ENGINEERS:		Approved: Assistant Director			Approved: Chief of Staff			Approved: Chief, Engineering			Drawing Title			Project Name			Project Number			Office of Construction and Facilities Management Department of Veterans Affairs					
				Approved: Service Chief			Approved: Service Chief			Approved: Service Chief			FIFTH FLOOR MECHANICAL FLOOR PLAN AC-51 DEMOLITION			KD AIR HANDLER REPLACEMENT (AHU) PROJECT - PHASE II			671A-09-110								
				Approved: Chief, Bio-Med			Approved: Chief, EMS			Approved: Chief, Infection Control			Location			Building Number			Checked						Drawn		
				Approved: Chief, IT			Approved: Chief, M&O			Approved: Chief, Police			Kernville Veterans Hospital Veterans Affairs 2600 Memorial Blvd. Kernville, TX 78028			11			ESW						PJR		
Revisions:		Date		Approved: Chief, Safety			Approved: Chief			Approved: Chief									Drawing Number			11-MD509					
																			Dwg. of								



three eighths inch = one foot  
one eighth inch = one foot  
one quarter inch = one foot  
one half inch = one foot  
three quarters inch = one foot  
one inch = one foot  
one and one half inches = one foot  
two inches = one foot  
three inches = one foot  
four inches = one foot  
five inches = one foot  
six inches = one foot  
seven inches = one foot  
eight inches = one foot  
nine inches = one foot  
ten inches = one foot  
eleven inches = one foot  
twelve inches = one foot  
thirteen inches = one foot  
fourteen inches = one foot  
fifteen inches = one foot  
sixteen inches = one foot  
seventeen inches = one foot  
eighteen inches = one foot  
nineteen inches = one foot  
twenty inches = one foot  
twenty one inches = one foot  
twenty two inches = one foot  
twenty three inches = one foot  
twenty four inches = one foot  
twenty five inches = one foot  
twenty six inches = one foot  
twenty seven inches = one foot  
twenty eight inches = one foot  
twenty nine inches = one foot  
thirty inches = one foot  
thirty one inches = one foot  
thirty two inches = one foot  
thirty three inches = one foot  
thirty four inches = one foot  
thirty five inches = one foot  
thirty six inches = one foot  
thirty seven inches = one foot  
thirty eight inches = one foot  
thirty nine inches = one foot  
forty inches = one foot  
forty one inches = one foot  
forty two inches = one foot  
forty three inches = one foot  
forty four inches = one foot  
forty five inches = one foot  
forty six inches = one foot  
forty seven inches = one foot  
forty eight inches = one foot  
forty nine inches = one foot  
fifty inches = one foot  
fifty one inches = one foot  
fifty two inches = one foot  
fifty three inches = one foot  
fifty four inches = one foot  
fifty five inches = one foot  
fifty six inches = one foot  
fifty seven inches = one foot  
fifty eight inches = one foot  
fifty nine inches = one foot  
sixty inches = one foot  
sixty one inches = one foot  
sixty two inches = one foot  
sixty three inches = one foot  
sixty four inches = one foot  
sixty five inches = one foot  
sixty six inches = one foot  
sixty seven inches = one foot  
sixty eight inches = one foot  
sixty nine inches = one foot  
seventy inches = one foot  
seventy one inches = one foot  
seventy two inches = one foot  
seventy three inches = one foot  
seventy four inches = one foot  
seventy five inches = one foot  
seventy six inches = one foot  
seventy seven inches = one foot  
seventy eight inches = one foot  
seventy nine inches = one foot  
eighty inches = one foot  
eighty one inches = one foot  
eighty two inches = one foot  
eighty three inches = one foot  
eighty four inches = one foot  
eighty five inches = one foot  
eighty six inches = one foot  
eighty seven inches = one foot  
eighty eight inches = one foot  
eighty nine inches = one foot  
ninety inches = one foot  
ninety one inches = one foot  
ninety two inches = one foot  
ninety three inches = one foot  
ninety four inches = one foot  
ninety five inches = one foot  
ninety six inches = one foot  
ninety seven inches = one foot  
ninety eight inches = one foot  
ninety nine inches = one foot  
one hundred inches = one foot



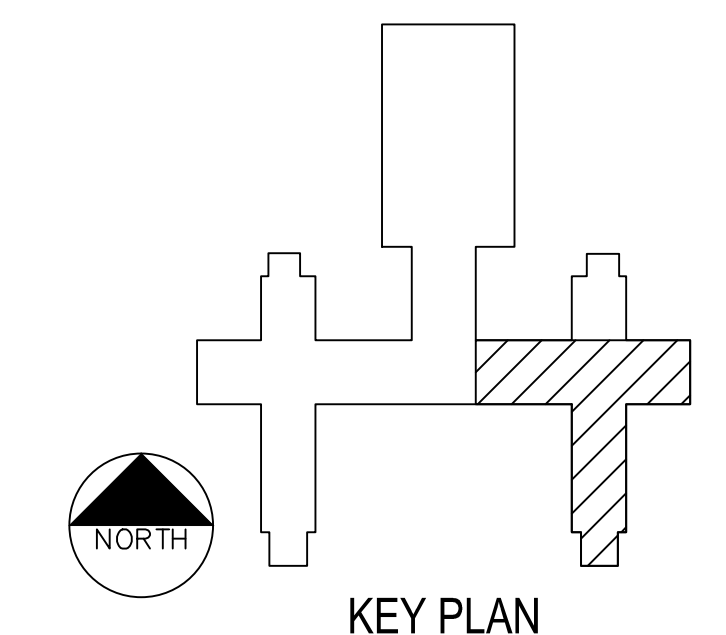
1 DEMOLITION FLOOR PLAN — AC-52  
SCALE: 1/8"=1'-0"



2 ENLARGED MECHANICAL ROOM FLOOR PLAN — AC-52  
SCALE: 1/4"=1'-0"

- GENERAL NOTES**
1. ALL EXISTING LAYOUTS INDICATED ON THESE DOCUMENTS ARE BASED ON INFORMATION AVAILABLE AND MAY INCLUDE INACCURACIES AND BE INCOMPLETE.
  2. CONTRACTORS SHALL BE SOLELY RESPONSIBLE FOR VERIFYING ACTUAL CONDITIONS AT THE SITE AND NOTING ALL DISCREPANCIES TO THE OWNER PRIOR TO WORK COMMENCEMENT; THEREAFTER, THE CONTRACTOR ACCEPTS FULL RESPONSIBILITY FOR ALL EXISTING CONDITIONS AND SHALL BE SOLELY RESPONSIBLE FOR MAKING ALL SUITABLE ADJUSTMENTS NECESSARY TO ACCOMMODATE NEW WORK AT NO ADDITIONAL COST TO THE OWNER; ANY SUCH ADJUSTMENTS SHALL BE COORDINATED WITH THE OWNER AND ENGINEER.
  3. CONTRACTOR SHALL COORDINATE ALL WORK WITH OTHER TRADES AND INCLUDE ALL NECESSARY MODIFICATIONS TO ACCOMMODATE THEIR WORK.
  4. ALL EQUIPMENT AND MATERIALS INDICATED TO BE REUSED OR RELOCATED SHALL BE CLEANED AND REPAIRED OF ANY DAMAGE INCURRED AS A RESULT OF REMOVAL PRIOR TO RE-INSTALLATION.
  5. ALL EXISTING MECHANICAL SYSTEMS THAT REQUIRE REMOVAL AND RELOCATION AS A RESULT THE NEW CONSTRUCTION SHALL REMAIN IN SERVICE, AS PER THE ORIGINAL DESIGN INTENT, FOLLOWING COMPLETION OF THE ADDITION CONSTRUCTION.
  6. ACTIVE HVAC EQUIPMENT DUCTS, PIPING, ELECTRICAL, ETC. NOT SHOWN NOR INDICATED SHALL REMAIN.
  7. CONTRACTOR SHALL PATCH AND REPAIR ALL WALLS, FLOORS, CEILINGS, ETC. THAT ARE AFFECTED BY THE NEW WORK; PATCHING MATERIALS AND FINISH SHALL MATCH THE EXISTING OR NEW WORK IN THE IMMEDIATE VICINITY.
  8. ALL APPURTENANCES, EQUIPMENT, AND LABOR NOT SPECIFICALLY CALLED FOR IN THESE DRAWINGS OR SPECIFICATIONS, BUT NECESSARY TO FULFILL THE DESIGN INTENT OF THE SAME, SHALL BE CONSIDERED INCIDENTAL TO THE WORK SCOPE AND THEREBY REQUIRED BY THE CONTRACTOR.
  9. THE CONTRACTOR SHALL PROVIDE NEW FIRE PROTECTION PIPING, HEADS, SPRINKLERS, ETC. FOR ALL AREAS OF WORK THAT THE CEILING GRID SYSTEM IS REMOVED AND REPLACED. THE CONTRACTOR SHALL SUBMIT DRAWINGS PREPARED BY A FIRE PROTECTION ENGINEER FOR APPROVAL BY THE CONTRACTING OFFICER. THE INSTALLATION WILL BE BY A LICENSED CONTRACTOR.
- KEYED NOTES**
- 1 AC-52 IS EXISTING TO REMAIN AS WELL AS ASSOCIATED CHILLED WATER AND CONDENSATE PIPING. DEMOLISH ASSOCIATED DUCTWORK AND APPURTENANCES.
  - 2 DEMOLISH HOT WATER PIPING BACK TO SHUT-OFF VALVE. REMOVE ALL INSULATION ON HOT & CHILLED WATER RISERS AND RE-INSULATE PER SPECIFICATIONS.
  - 3 DEMOLISH HOT WATER VALVE RACK AND ASSOCIATED HOT WATER PIPING TO EACH TERMINAL UNIT. SALVAGE ALL VALVES, FITTINGS, AND APPURTENANCES AND RETURN TO OWNER.
  - 4 SALVAGE TERMINAL UNITS IN MECHANICAL ROOM AND RETURN TO OWNER.
  - 5 DEMOLISH OUTSIDE AIR DUCTWORK, DAMPER, AND ASSOCIATED CONTROLS.
  - 6 CAP AND SEAL EXISTING RETURN AIR GRILLE IN WALL.
  - 7 DEMOLISH AC-52 SUPPLY AIR DUCTWORK, AIR DEVICES, APPURTENANCES, ETC.

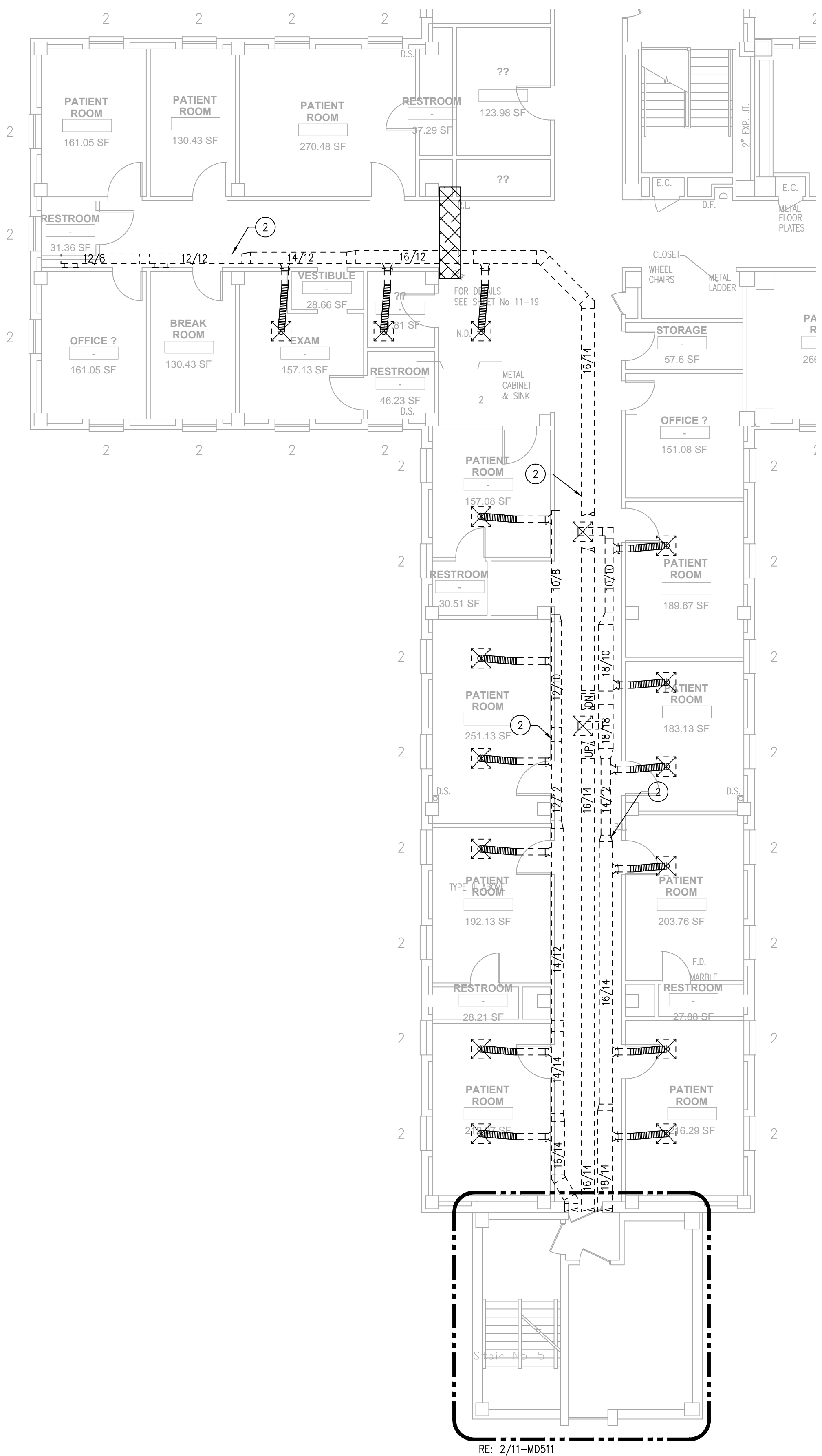
- CONFLICT LEGEND**
- IT ----- COORDINATE RELOCATION OF IT EQUIPMENT/WIRING WITH OWNERS REPRESENTATIVE.
- ELECTRICAL ----- RELOCATE EXISTING CONDUIT TO ACCOMMODATE NEW DUCTWORK. IT SHALL BE THE CONTRACTOR'S RESPONSIBILITY TO CAREFULLY IDENTIFY EACH SERVICE PRIOR TO RELOCATION AND NOTIFY OWNER OF ANY INTERRUPTIONS REQUIRED. COORDINATE NEW LOCATION OF CONDUITS WITH OTHER TRADES.
- FIRE PROTECTION ----- RELOCATE EXISTING FIRE SPRINKLER PIPING TO ACCOMMODATE NEW DUCTWORK. COORDINATE NEW ROUTING IN FIELD WITH OTHER TRADES. NOTIFY OWNER PRIOR TO ANY SHUTDOWNS.
- HYDRONICS ----- RELOCATE EXISTING HYDRONIC PIPING TO ACCOMMODATE NEW DUCTWORK. COORDINATE NEW ROUTING WITH OTHER TRADES. ANY SYSTEMS DRAINAGE MUST BE COORDINATED WITH OWNER.
- MED GAS ----- RELOCATE EXISTING MED GAS PIPING TO ACCOMMODATE NEW DUCTWORK. COORDINATE SHUT-DOWN WITH OWNER.
- PLUMBING ----- RELOCATE EXISTING PLUMBING TO ACCOMMODATE NEW DUCTWORK. COORDINATE NEW PIPING WITH OTHER TRADES. NOTIFY OWNER PRIOR TO SHUTTING DOWN ANY FACILITIES.



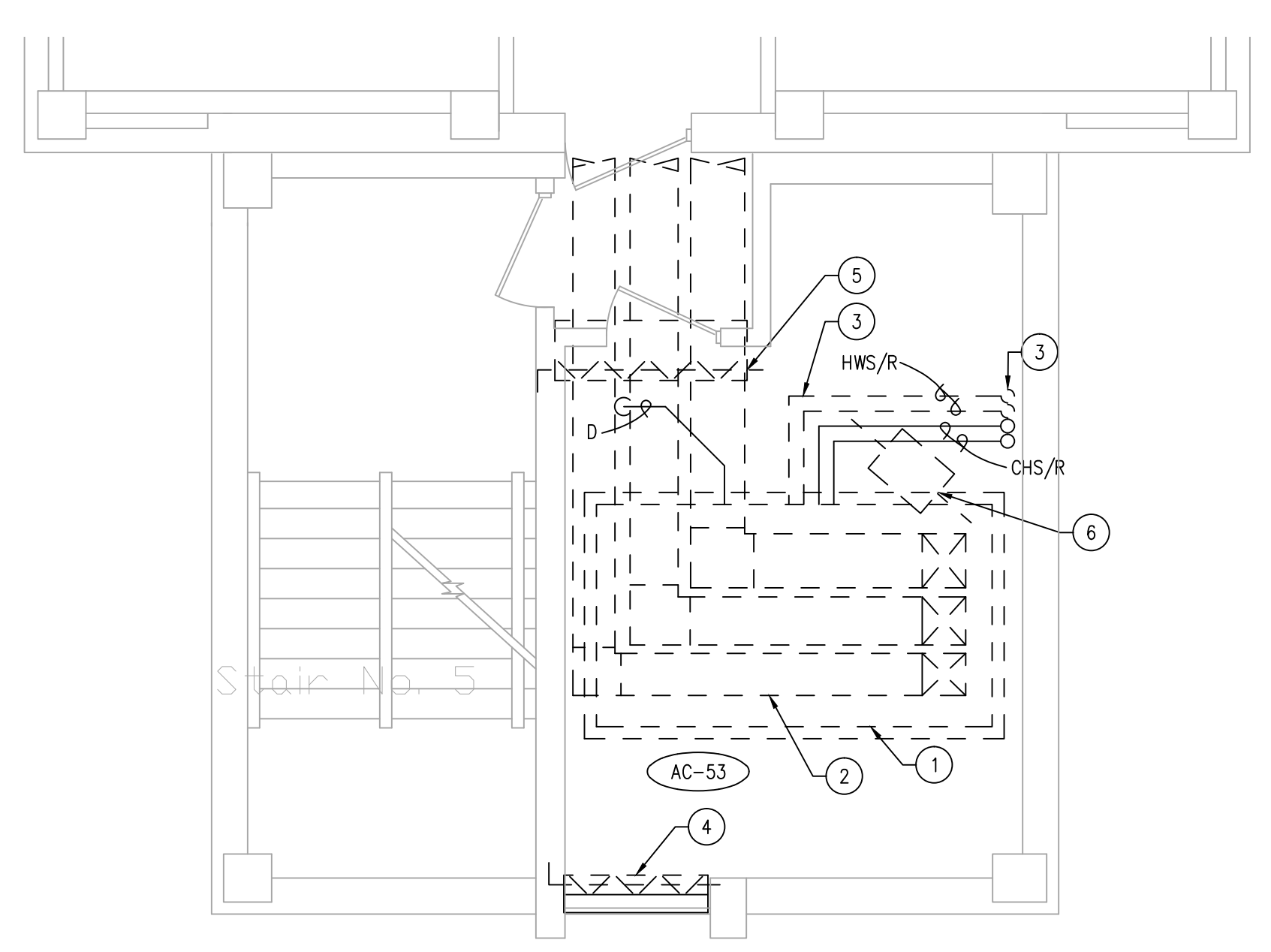
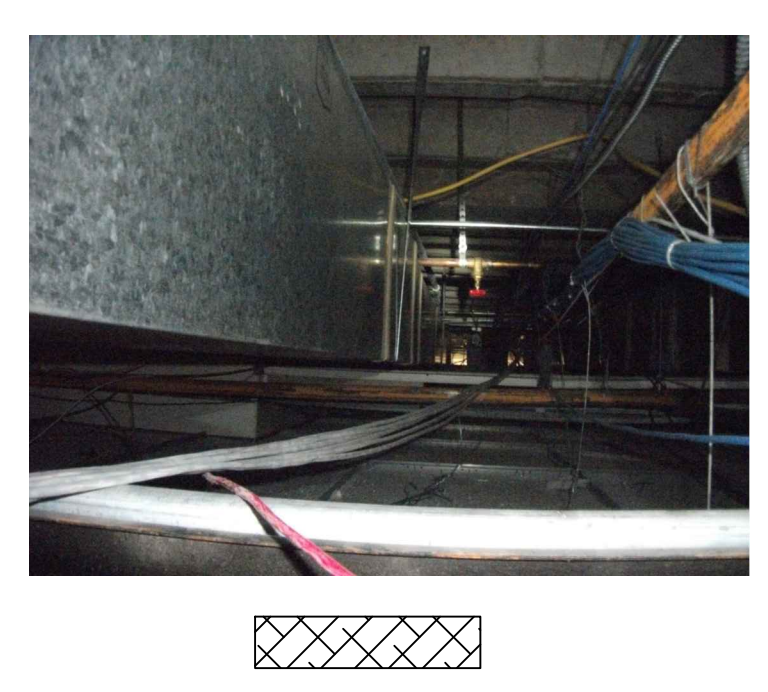
--	--	--	--	--	--	--	--	--	--	--	--	--	--	--	--	--	--	--	--	--	--	--	--	--	--	--	--	--	--	--	--	--	--	--	--	--	--	--	--	--	--	--	--	--	--	--	--	--	--	--	--	--	--	--	--	--	--	--	--	--	--	--	--	--	--	--	--	--	--	--	--	--	--	--	--	--	--	--	--	--	--	--	--	--	--	--	--	--	--	--	--	--	--	--	--	--	--	--	--	--	--	--	--	--	--	--	--	--	--	--	--	--	--	--	--	--	--	--	--	--	--	--	--	--	--	--	--	--	--	--	--	--	--	--	--	--	--	--	--	--	--	--	--	--	--	--	--	--	--	--	--	--	--	--	--	--	--	--	--	--	--	--	--	--	--	--	--	--	--	--	--	--	--	--	--	--	--	--	--	--	--	--	--	--	--	--	--	--	--	--	--	--	--	--	--	--	--	--	--	--	--	--	--	--	--	--	--	--	--	--	--	--	--	--	--	--	--	--	--	--	--	--	--	--	--	--	--	--	--	--	--	--	--	--	--	--	--	--	--	--	--	--	--	--	--	--	--	--	--	--	--	--	--	--	--	--	--	--	--	--	--	--	--	--	--	--	--	--	--	--	--	--	--	--	--	--	--	--	--	--	--	--	--	--	--	--	--	--	--	--	--	--	--	--	--	--	--	--	--	--	--	--	--	--	--	--	--	--	--	--	--	--	--	--	--	--	--	--	--	--	--	--	--	--	--	--	--	--	--	--	--	--	--	--	--	--	--	--	--	--	--	--	--	--	--	--	--	--	--	--	--	--	--	--	--	--	--	--	--	--	--	--	--	--	--	--	--	--	--	--	--	--	--	--	--	--	--	--	--	--	--	--	--	--	--	--	--	--	--	--	--	--	--	--	--	--	--	--	--	--	--	--	--	--	--	--	--	--	--	--	--	--	--	--	--	--	--	--	--	--	--	--	--	--	--	--	--	--	--	--	--	--	--	--	--	--	--	--	--	--	--	--	--	--	--	--	--	--	--	--	--	--	--	--	--	--	--	--	--	--	--	--	--	--	--	--	--	--	--	--	--	--	--	--	--	--	--	--	--	--	--	--	--	--	--	--	--	--	--	--	--	--	--	--	--	--	--	--	--	--	--	--	--	--	--	--	--	--	--	--	--	--	--	--	--	--	--	--	--	--	--	--	--	--	--	--	--	--	--	--	--	--	--	--	--	--	--	--	--	--	--	--	--	--	--	--	--	--	--	--	--	--	--	--	--	--	--	--	--	--	--	--	--	--	--	--	--	--	--	--	--	--	--	--	--	--	--	--	--	--	--	--	--	--	--	--	--	--	--	--	--	--	--	--	--	--	--	--	--	--	--	--	--	--	--	--	--	--	--	--	--	--	--	--	--	--	--	--	--	--	--	--	--	--	--	--	--	--	--	--	--	--	--	--	--	--	--	--	--	--	--	--	--	--	--	--	--	--	--	--	--	--	--	--	--	--	--	--	--	--	--	--	--	--	--	--	--	--	--	--	--	--	--	--	--	--	--	--	--	--	--	--	--	--	--	--	--	--	--	--	--	--	--	--	--	--	--	--	--	--	--	--	--	--	--	--	--	--	--	--	--	--	--	--	--	--	--	--	--	--	--	--	--	--	--	--	--	--	--	--	--	--	--	--	--	--	--	--	--	--	--	--	--	--	--	--	--	--	--	--	--	--	--	--	--	--	--	--	--	--	--	--	--	--	--	--	--	--	--	--	--	--	--	--	--	--	--	--	--	--	--	--	--	--	--	--	--	--	--	--	--	--	--	--	--	--	--	--	--	--	--	--	--	--	--	--	--	--	--	--	--	--	--	--	--	--	--	--	--	--	--	--	--	--	--	--	--	--	--	--	--	--	--	--	--	--	--	--	--	--	--	--	--	--	--	--	--	--	--	--	--	--	--	--	--	--	--	--	--	--	--	--	--	--	--	--	--	--	--	--	--	--	--	--	--	--	--	--	--	--	--	--	--	--	--	--	--	--	--	--	--	--	--	--	--	--	--	--	--	--	--	--	--	--	--	--	--	--	--	--	--	--	--	--	--	--	--	--	--	--	--	--	--	--	--	--	--	--	--	--	--	--	--	--	--	--	--	--	--	--	--	--	--	--	--	--	--	--	--	--	--	--	--	--	--	--	--	--	--	--	--	--	--	--	--	--	--	--	--	--	--	--	--	--	--	--	--	--	--	--	--	--	--	--	--	--	--	--	--	--	--	--	--	--	--	--	--	--	--	--	--	--	--	--	--	--	--	--	--	--	--	--	--	--	--	--	--	--	--	--	--	--	--	--	--	--	--	--	--	--	--	--	--	--	--	--	--	--	--	--	--	--	--	--	--	--	--	--	--	--	--	--	--	--	--	--	--	--	--	--	--	--	--	--	--	--	--	--	--	--	--	--	--	--	--	--	--	--	--	--	--	--	--	--	--	--	--	--	--	--	--	--	--	--	--	--	--	--	--	--	--	--	--	--	--	--	--	--	--	--	--	--	--	--	--	--	--	--	--	--	--	--	--	--	--	--	--	--	--	--	--	--	--	--	--	--	--	--	--	--	--	--	--	--	--	--	--	--	--	--	--	--	--	--	--	--	--	--	--	--	--	--	--	--	--	--	--	--	--	--	--	--	--	--	--	--	--	--	--	--	--	--	--	--	--	--	--	--	--	--	--	--	--	--	--	--	--	--	--	--	--	--	--	--	--	--	--	--	--	--	--	--	--	--	--	--	--	--	--	--	--	--	--	--	--	--	--	--	--	--	--	--	--	--	--	--	--	--	--	--	--	--	--	--	--	--	--	--	--	--	--	--	--	--	--	--	--	--	--	--	--	--	--	--	--	--	--	--	--	--	--	--	--	--	--	--	--	--	--	--	--	--	--	--	--	--	--	--	--	--	--	--	--	--	--	--	--	--	--	--	--	--	--	--	--	--	--	--	--	--	--	--	--	--	--	--	--	--	--	--	--	--	--	--	--	--	--	--	--	--	--	--	--	--	--	--	--	--	--	--	--	--	--	--	--	--	--	--	--	--	--	--	--	--	--	--	--	--	--	--	--	--	--	--	--	--	--	--	--	--	--	--	--	--	--	--	--	--	--	--	--	--	--	--	--	--	--	--	--	--	--	--	--	--	--	--	--	--	--	--	--	--	--	--	--	--	--	--	--	--	--	--	--	--	--	--	--	--	--	--	--	--	--	--	--	--	--	--	--	--	--	--	--	--	--	--	--	--	--	--	--	--	--	--	--	--	--	--	--	--	--	--	--	--	--	--	--	--	--	--	--	--	--	--	--	--	--	--	--	--	--	--	--	--	--	--	--	--	--	--	--	--	--	--	--	--	--	--	--	--	--	--	--	--	--	--	--	--	--	--	--	--	--	--	--	--	--	--	--	--	--	--	--	--	--	--	--	--	--	--	--	--	--	--	--	--	--	--	--	--	--	--	--	--	--	--	--	--	--	--	--	--	--	--	--	--	--	--	--	--	--	--	--	--	--	--	--	--	--	--	--	--	--	--	--	--	--	--	--	--	--	--	--	--	--	--	--	--	--	--	--	--	--	--	--	--	--	--	--	--	--	--



three inches = one foot  
one and one half inches = one foot  
one inch = one foot  
three quarters inch = one foot  
one half inch = one foot  
three eighths inch = one foot  
one quarter inch = one foot  
one eighth inch = one foot



1 DEMOLITION FLOOR PLAN – AC-53  
SCALE: 1/8"=1'-0"



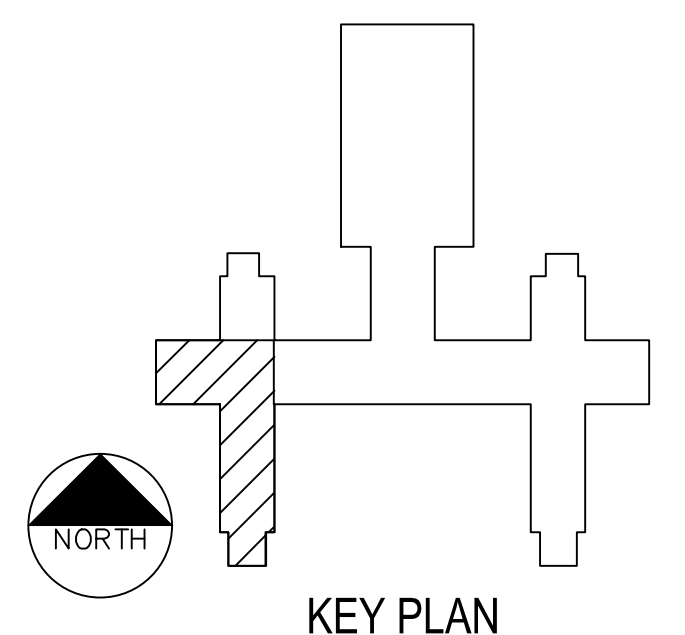
2 ENLARGED MECHANICAL ROOM FLOOR PLAN – AC-53  
SCALE: 1/4"=1'-0"

- GENERAL NOTES**
1. ALL EXISTING LAYOUTS INDICATED ON THESE DOCUMENTS ARE BASED ON INFORMATION AVAILABLE AND MAY INCLUDE INACCURACIES AND BE INCOMPLETE.
  2. CONTRACTORS SHALL BE SOLELY RESPONSIBLE FOR VERIFYING ACTUAL CONDITIONS AT THE SITE AND NOTING ALL DISCREPANCIES TO THE OWNER PRIOR TO WORK COMMENCEMENT; THEREAFTER, THE CONTRACTOR ACCEPTS FULL RESPONSIBILITY FOR ALL EXISTING CONDITIONS AND SHALL BE SOLELY RESPONSIBLE FOR MAKING ALL SUITABLE ADJUSTMENTS NECESSARY TO ACCOMMODATE NEW WORK AT NO ADDITIONAL COST TO THE OWNER. ANY SUCH ADJUSTMENTS SHALL BE COORDINATED WITH THE OWNER AND ENGINEER.
  3. CONTRACTOR SHALL COORDINATE ALL WORK WITH OTHER TRADES AND INCLUDE ALL NECESSARY MODIFICATIONS TO ACCOMMODATE THEIR WORK.
  4. ALL EQUIPMENT AND MATERIALS INDICATED TO BE REUSED OR RELOCATED SHALL BE CLEANED AND REPAIRED OF ANY DAMAGE INCURRED AS A RESULT OF REMOVAL PRIOR TO RE-INSTALLATION.
  5. ALL EXISTING MECHANICAL SYSTEMS THAT REQUIRE REMOVAL AND RELOCATION AS A RESULT THE NEW CONSTRUCTION SHALL REMAIN IN SERVICE, AS PER THE ORIGINAL DESIGN INTENT, FOLLOWING COMPLETION OF THE ADDITION CONSTRUCTION.
  6. ACTIVE HVAC EQUIPMENT DUCTS, PIPING, ELECTRICAL, ETC. NOT SHOWN NOR INDICATED SHALL REMAIN.
  7. CONTRACTOR SHALL PATCH AND REPAIR ALL WALLS, FLOORS, CEILINGS, ETC. THAT ARE AFFECTED BY THE NEW WORK; PATCHING MATERIALS AND FINISH SHALL MATCH THE EXISTING OR NEW WORK IN THE IMMEDIATE VICINITY.
  8. ALL APPURTENANCES, EQUIPMENT, AND LABOR NOT SPECIFICALLY CALLED FOR IN THESE DRAWINGS OR SPECIFICATIONS, BUT NECESSARY TO FULFILL THE DESIGN INTENT OF THE SAME, SHALL BE CONSIDERED INCIDENTAL TO THE WORK SCOPE AND THEREBY REQUIRED BY THE CONTRACTOR.
  9. THE CONTRACTOR SHALL PROVIDE NEW FIRE PROTECTION PIPING, HEADS, SPRINKLERS, ETC. FOR ALL AREAS OF WORK THAT THE CEILING GRID SYSTEM IS REMOVED AND REPLACED. THE CONTRACTOR SHALL SUBMIT DRAWINGS PREPARED BY A FIRE PROTECTION ENGINEER FOR APPROVAL BY THE CONTRACTING OFFICER. THE INSTALLATION WILL BE BY A LICENSED CONTRACTOR.

- KEYED DEMO NOTES**
- 1 DEMOLISH AC-53 AIR HANDLING UNIT IN ITS' ENTIRETY. THIS INCLUDES, BUT IS NOT LIMITED TO: ALL SECTIONS OF AHU, CONDENSATE PIPING AND ASSOCIATED SUPPORTS, AS WELL AS ASSOCIATED DUCTWORK AND APPURTENANCES AND CONTROLS.
  - 2 DEMOLISH ASSOCIATED SUPPLY AIR DUCTWORK, AIR DEVICES, SENSORS, AND APPURTENANCES.
  - 3 DEMOLISH EXISTING HYDRONIC PIPING FROM RISERS TO AIR HANDLING UNIT. REMOVE ALL INSULATION FROM RISERS AND INSTALL NEW SHUT-OFF VALVES IN EACH LINE AS FOLLOWS:  
2 1/2" - CHS/R  
1 1/2" - HWS/R
  - 4 DEMOLISH EXISTING OUTSIDE AIR DUCTWORK AND ASSOCIATED DAMPER AND ACTUATOR.
  - 5 DEMOLISH EXISTING RETURN AIR DUCTWORK AND ASSOCIATED DAMPER AND ACTUATOR.
  - 6 DEMOLISH EXISTING SMOKE EVAC SYSTEM INCLUDING DUCTWORK AND SUPPORTS. SALVAGE EXHAUST FAN AND RETURN TO OWNER. CAP AND INSULATE EXISTING EXHAUST LOUVER.

**CONFLICT LEGEND**

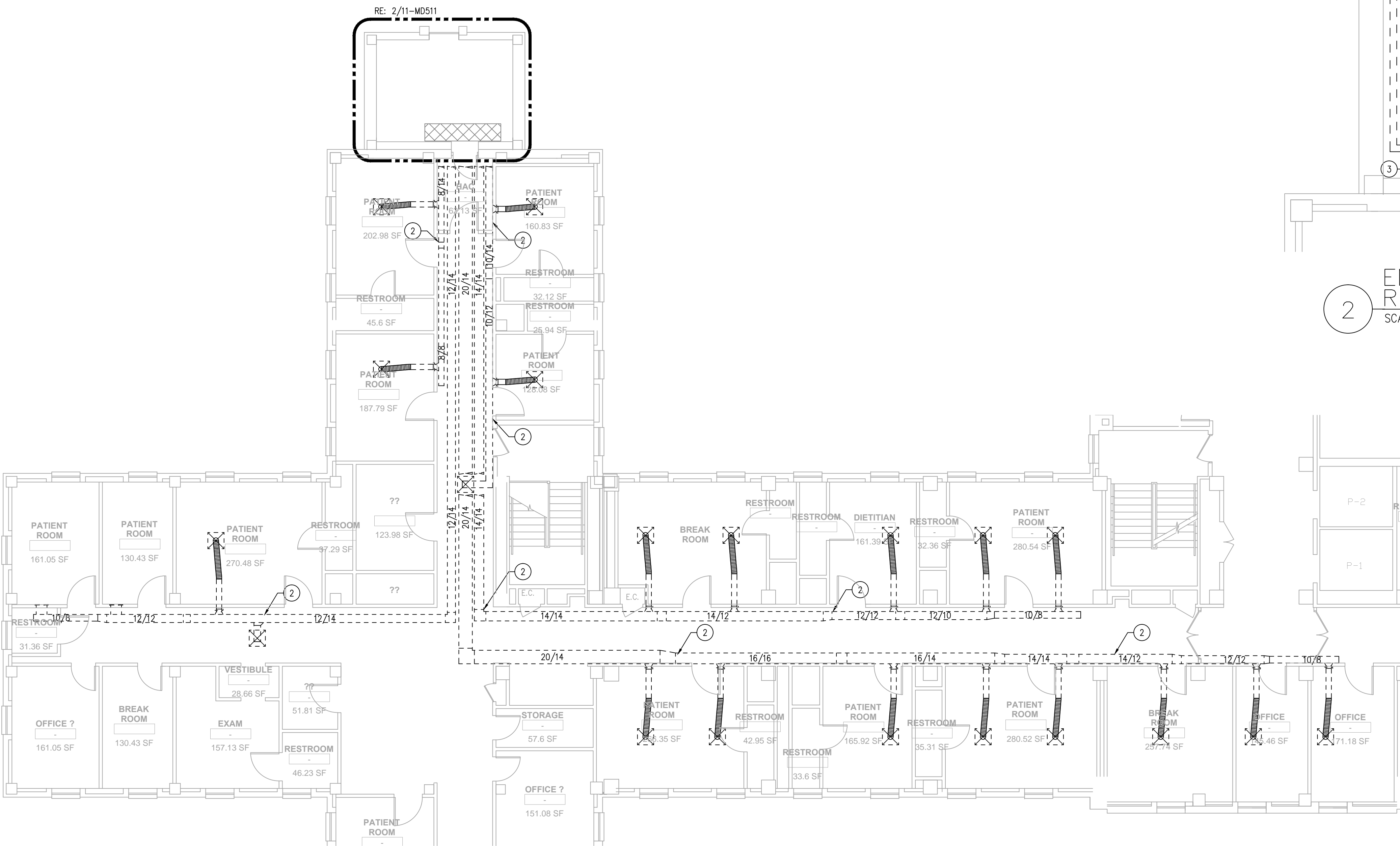
- IT ----- COORDINATE RELOCATION OF IT EQUIPMENT/WIRING WITH OWNERS REPRESENTATIVE.
- ELECTRICAL ----- RELOCATE EXISTING CONDUIT TO ACCOMMODATE NEW DUCTWORK. IT SHALL BE THE CONTRACTOR'S RESPONSIBILITY TO CAREFULLY IDENTIFY EACH SERVICE PRIOR TO RELOCATION AND NOTIFY OWNER OF ANY INTERRUPTIONS REQUIRED. COORDINATE NEW LOCATION OF CONDUITS WITH OTHER TRADES.
- FIRE PROTECTION ----- RELOCATE EXISTING FIRE SPRINKLER PIPING TO ACCOMMODATE NEW DUCTWORK. COORDINATE NEW ROUTING IN FIELD WITH OTHER TRADES. NOTIFY OWNER PRIOR TO ANY SHUTDOWNS.
- HYDRONICS ----- RELOCATE EXISTING HYDRONIC PIPING TO ACCOMMODATE NEW DUCTWORK. COORDINATE NEW ROUTING WITH OTHER TRADES. ANY SYSTEMS DRAINAGE MUST BE COORDINATED WITH OWNER.
- MED GAS ----- RELOCATE EXISTING MED GAS PIPING TO ACCOMMODATE NEW DUCTWORK. COORDINATE SHUT-DOWN WITH OWNER.
- PLUMBING ----- RELOCATE EXISTING PLUMBING TO ACCOMMODATE NEW DUCTWORK. COORDINATE NEW PIPING WITH OTHER TRADES. NOTIFY OWNER PRIOR TO SHUTTING DOWN ANY FACILITIES.



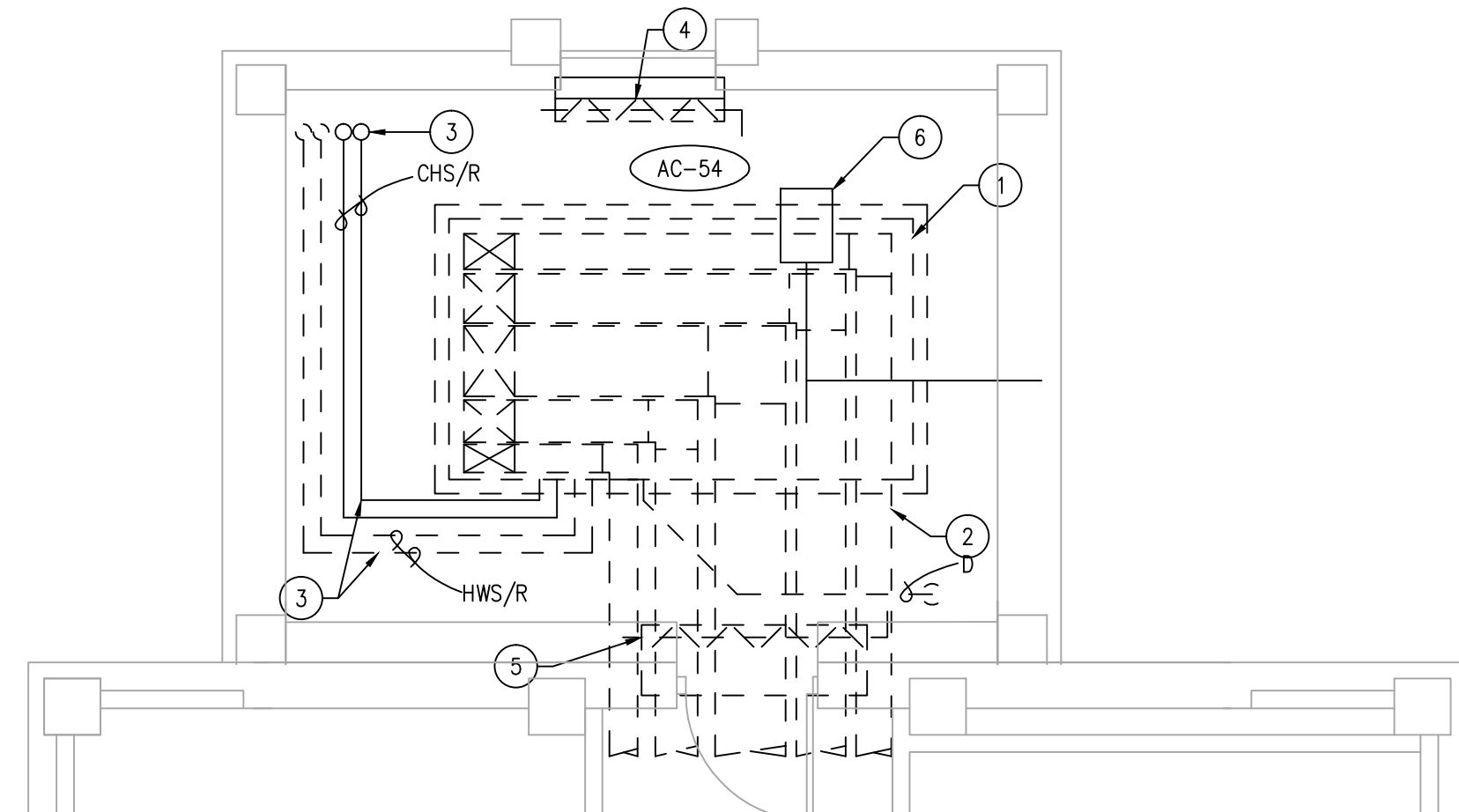
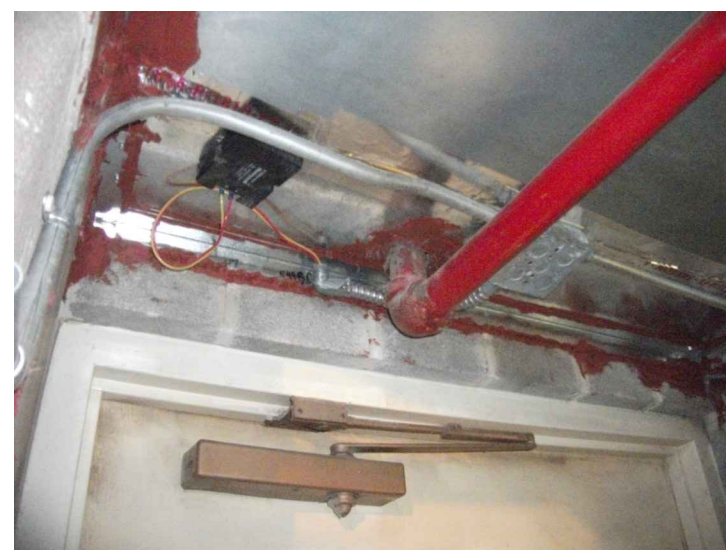
<b>CONSULTANTS:</b>		<b>ARCHITECT/ENGINEERS:</b>		Approved: Assistant Director			Approved: Chief of Staff			Approved: Chief, Engineering			Drawing Title			Project Name			Project Number			<b>Office of Construction and Facilities Management</b> Department of Veterans Affairs					
				Approved: Service Chief			Approved: Service Chief			Approved: Service Chief			FIFTH FLOOR MECHANICAL FLOOR PLAN AC-53 DEMOLITION			KD AIR HANDLER REPLACEMENT (AHU) PROJECT - PHASE II			671A-09-110								
				Approved: Chief, Bio-Med			Approved: Chief, EMS			Approved: Chief, Infection Control			Location			Building Number			Checked						Drawn		
				Approved: Chief, IT			Approved: Chief, M&O			Approved: Chief, Police			Kerrville Veterans Hospital Veterans Affairs 2600 Memorial Blvd. Kerrville, TX 78028			11			ESW						PJR		
Revisions:		Date		TTG GOETTING, INC. F-903		Approved: Chief, Safety			Approved: Chief			Approved: Chief			Kerrville Veterans Hospital Veterans Affairs 2600 Memorial Blvd. Kerrville, TX 78028			Drawing Number			11-MD511						
																		Dwg. of									



three eighths inch = one foot  
one eighth inch = one foot  
one quarter inch = one foot  
one half inch = one foot  
three quarters inch = one foot  
one inch = one foot  
one and one half inches = one foot  
two inches = one foot  
three inches = one foot



1 DEMOLITION FLOOR PLAN - AC-54  
SCALE: 1/8"=1'-0"



2 ENLARGED MECHANICAL ROOM FLOOR PLAN - AC-54  
SCALE: 1/4"=1'-0"

GENERAL NOTES

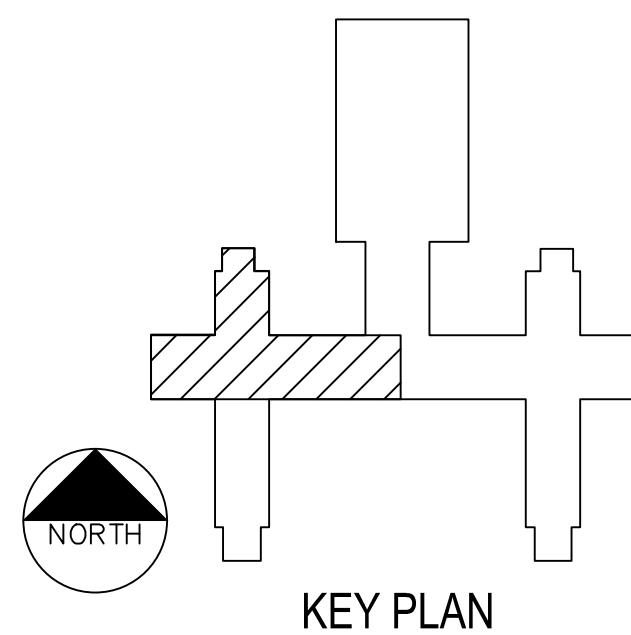
- ALL EXISTING LAYOUTS INDICATED ON THESE DOCUMENTS ARE BASED ON INFORMATION AVAILABLE AND MAY INCLUDE INACCURACIES AND BE INCOMPLETE.
- CONTRACTORS SHALL BE SOLELY RESPONSIBLE FOR VERIFYING ACTUAL CONDITIONS AT THE SITE AND NOTING ALL DISCREPANCIES TO THE OWNER PRIOR TO WORK COMMENCEMENT; THEREAFTER, THE CONTRACTOR ACCEPTS FULL RESPONSIBILITY FOR ALL EXISTING CONDITIONS AND SHALL BE SOLELY RESPONSIBLE FOR MAKING ALL SUITABLE ADJUSTMENTS NECESSARY TO ACCOMMODATE NEW WORK AT NO ADDITIONAL COST TO THE OWNER. ANY SUCH ADJUSTMENTS SHALL BE COORDINATED WITH THE OWNER AND ENGINEER.
- CONTRACTOR SHALL COORDINATE ALL WORK WITH OTHER TRADES AND INCLUDE ALL NECESSARY MODIFICATIONS TO ACCOMMODATE THEIR WORK.
- ALL EQUIPMENT AND MATERIALS INDICATED TO BE REUSED OR RELOCATED SHALL BE CLEANED AND REPAIRED OF ANY DAMAGE INCURRED AS A RESULT OF REMOVAL PRIOR TO RE-INSTALLATION.
- ALL EXISTING MECHANICAL SYSTEMS THAT REQUIRE REMOVAL AND RELOCATION AS A RESULT THE NEW CONSTRUCTION SHALL REMAIN IN SERVICE, AS PER THE ORIGINAL DESIGN INTENT, FOLLOWING COMPLETION OF THE ADDITION CONSTRUCTION.
- ACTIVE HVAC EQUIPMENT DUCTS, PIPING, ELECTRICAL, ETC. NOT SHOWN NOR INDICATED SHALL REMAIN.
- CONTRACTOR SHALL PATCH AND REPAIR ALL WALLS, FLOORS, CEILINGS, ETC. THAT ARE AFFECTED BY THE NEW WORK; PATCHING MATERIALS AND FINISH SHALL MATCH THE EXISTING OR NEW WORK IN THE IMMEDIATE VICINITY.
- ALL APPURTENANCES, EQUIPMENT, AND LABOR NOT SPECIFICALLY CALLED FOR IN THESE DRAWINGS OR SPECIFICATIONS, BUT NECESSARY TO FULFILL THE DESIGN INTENT OF THE SAME, SHALL BE CONSIDERED INCIDENTAL TO THE WORK SCOPE AND THEREBY REQUIRED BY THE CONTRACTOR.
- THE CONTRACTOR SHALL PROVIDE NEW FIRE PROTECTION PIPING, HEADS, SPRINKLERS, ETC. FOR ALL AREAS OF WORK THAT THE CEILING GRID SYSTEM IS REMOVED AND REPLACED. THE CONTRACTOR SHALL SUBMIT DRAWINGS PREPARED BY A FIRE PROTECTION ENGINEER FOR APPROVAL BY THE CONTRACTING OFFICER. THE INSTALLATION WILL BE BY A LICENSED CONTRACTOR.

KEYED DEMO NOTES

- DEMOLISH AC-54 AIR HANDLING UNIT IN ITS ENTIRETY. THIS INCLUDES, BUT IS NOT LIMITED TO: ALL SECTIONS OF AHU, CONDENSATE PIPING AND ASSOCIATED SUPPORTS, AS WELL AS ASSOCIATED DUCTWORK AND APPURTENANCES AND CONTROLS.
- DEMOLISH ASSOCIATED SUPPLY AIR DUCTWORK, AIR DEVICES, SENSORS, AND APPURTENANCES.
- DEMOLISH EXISTING HYDRONIC PIPING FROM RISERS TO AIR HANDLING UNIT. REMOVE ALL INSULATION FROM RISERS AND INSTALL NEW SHUT-OFF VALVES IN EACH LINE AS FOLLOWS:  
2 1/2" - CHS/R  
1 1/2" - HWS/R
- DEMOLISH EXISTING OUTSIDE AIR DUCTWORK AND ASSOCIATED DAMPER AND ACTUATOR.
- DEMOLISH EXISTING RETURN AIR DUCTWORK AND ASSOCIATED DAMPER AND ACTUATOR.
- DEMOLISH EXISTING SMOKE EVAC SYSTEM INCLUDING DUCTWORK AND SUPPORTS. SALVAGE EXHAUST FAN AND RETURN TO OWNER. CAP AND INSULATE EXISTING EXHAUST LOUVER.

CONFLICT LEGEND

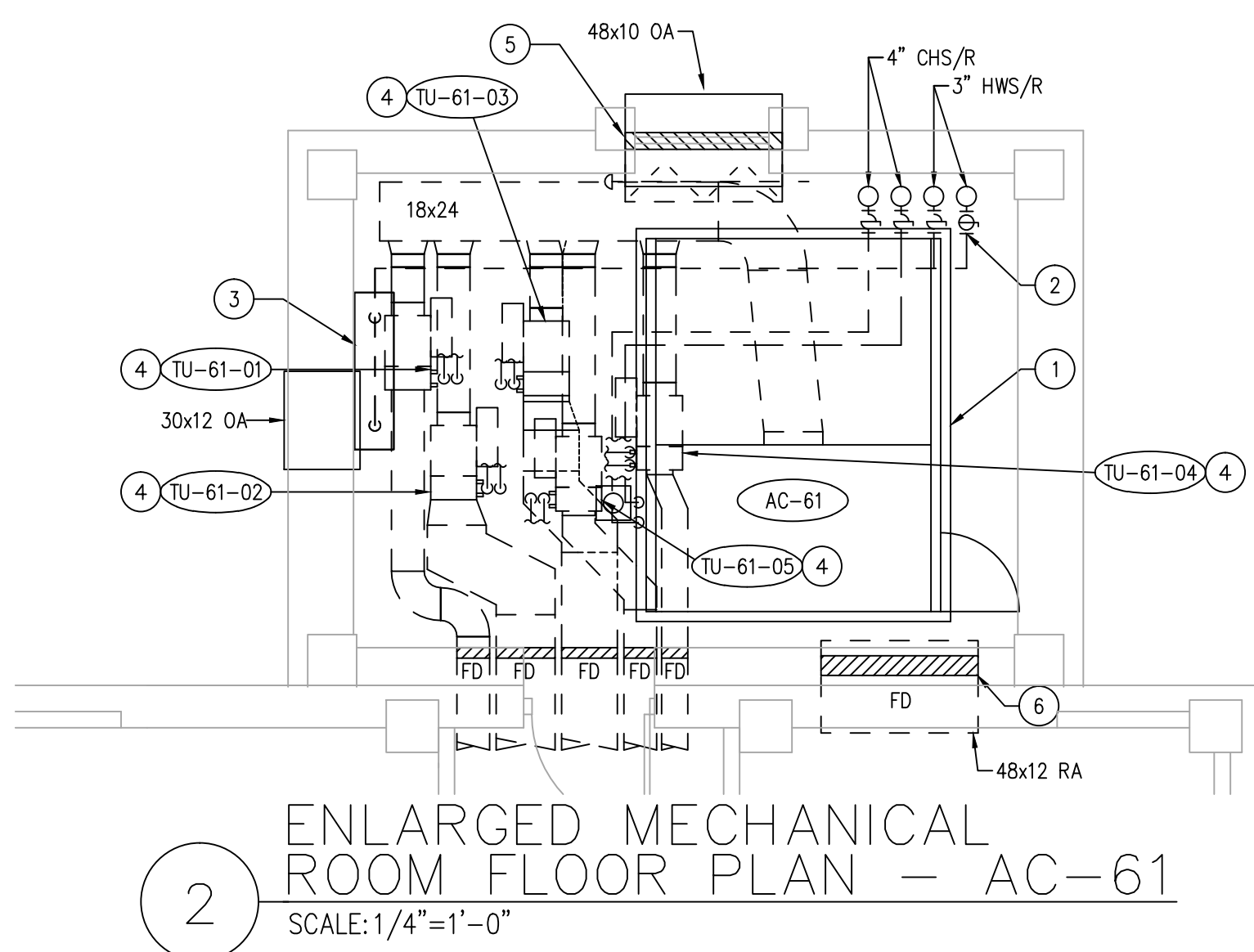
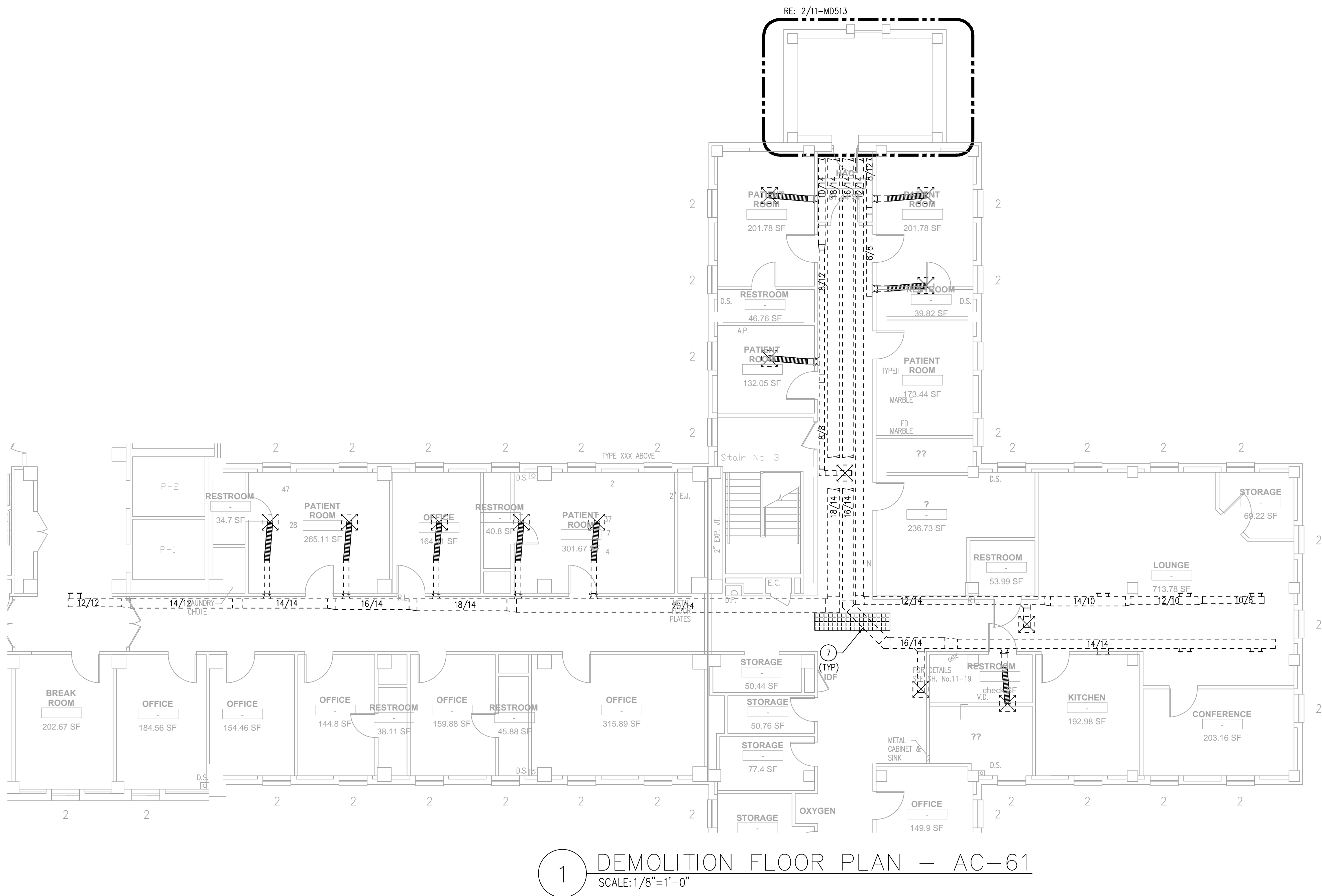
- IT ----- COORDINATE RELOCATION OF IT EQUIPMENT/WIRING WITH OWNERS REPRESENTATIVE.
- ELECTRICAL ----- RELOCATE EXISTING CONDUIT TO ACCOMMODATE NEW DUCTWORK. IT SHALL BE THE CONTRACTOR'S RESPONSIBILITY TO CAREFULLY IDENTIFY EACH SERVICE PRIOR TO RELOCATION AND NOTIFY OWNER OF ANY INTERRUPTIONS REQUIRED. COORDINATE NEW LOCATION OF CONDUITS WITH OTHER TRADES.
- FIRE PROTECTION ----- RELOCATE EXISTING FIRE SPRINKLER PIPING TO ACCOMMODATE NEW DUCTWORK. COORDINATE NEW ROUTING IN FIELD WITH OTHER TRADES. NOTIFY OWNER PRIOR TO ANY SHUTDOWNS.
- HYDRONICS ----- RELOCATE EXISTING HYDRONIC PIPING TO ACCOMMODATE NEW DUCTWORK. COORDINATE NEW ROUTING WITH OTHER TRADES. ANY SYSTEMS DRAINAGE MUST BE COORDINATED WITH OWNER.
- MED GAS ----- RELOCATE EXISTING MED GAS PIPING TO ACCOMMODATE NEW DUCTWORK. COORDINATE SHUT-DOWN WITH OWNER.
- PLUMBING ----- RELOCATE EXISTING PLUMBING TO ACCOMMODATE NEW DUCTWORK. COORDINATE NEW PIPING WITH OTHER TRADES. NOTIFY OWNER PRIOR TO SHUTTING DOWN ANY FACILITIES.



Revisions:		Date	
CONSULTANTS:		ARCHITECT/ENGINEERS:	
RH SHACKELFORD, INC. 501058		GOETTING & ASSOCIATES, INC. 12710 Research Blvd., Suite 355 Austin, Texas 78759 512/416-1654 FAX: 512/416-7547	
Approved: Assistant Director		Approved: Chief of Staff	
Approved: Service Chief		Approved: Service Chief	
Approved: Chief, Bio-Med		Approved: Chief, EMS	
Approved: Chief, IT		Approved: Chief, M&O	
Approved: Chief, Safety		Approved: Chief	
Approved: Chief, Engineering		Approved: Service Chief	
Approved: Chief, Infection Control		Approved: Chief, Police	
Approved: Chief		Approved: Chief	
Drawing Title		Project Name	
FIFTH FLOOR MECHANICAL FLOOR PLAN AC-54 DEMOLITION		KD AIR HANDLER REPLACEMENT (AHU) PROJECT - PHASE II	
Location		Project Number	
Kernville Veterans Hospital Veterans Affairs 2600 Memorial Blvd. Kernville, TX 78028		671A-09-110	
Building Number		Date	
11		07-15-13	
Checked		Drawing Number	
ESW		11-MD512	
Drawn		Dwg. of	
PJR			
Office of Construction and Facilities Management		Department of Veterans Affairs	



three inches = one foot  
one and one half inches = one foot  
one inch = one foot  
three quarters inch = one foot  
one half inch = one foot  
three eighths inch = one foot  
one quarter inch = one foot  
one eighth inch = one foot



#### GENERAL NOTES

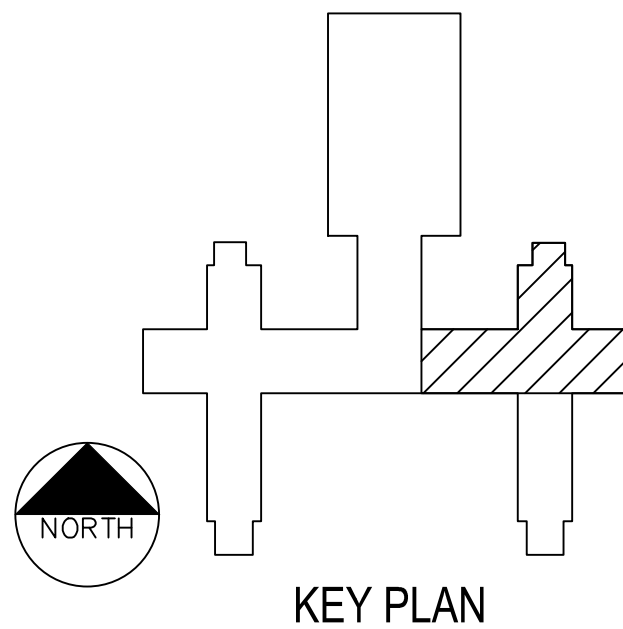
- ALL EXISTING LAYOUTS INDICATED ON THESE DOCUMENTS ARE BASED ON INFORMATION AVAILABLE AND MAY INCLUDE INACCURACIES AND BE INCOMPLETE.
- CONTRACTORS SHALL BE SOLELY RESPONSIBLE FOR VERIFYING ACTUAL CONDITIONS AT THE SITE AND NOTING ALL DISCREPANCIES TO THE OWNER PRIOR TO WORK COMMENCEMENT; THEREAFTER, THE CONTRACTOR ACCEPTS FULL RESPONSIBILITY FOR ALL EXISTING CONDITIONS AND SHALL BE SOLELY RESPONSIBLE FOR MAKING ALL SUITABLE ADJUSTMENTS NECESSARY TO ACCOMMODATE NEW WORK AT NO ADDITIONAL COST TO THE OWNER; ANY SUCH ADJUSTMENTS SHALL BE COORDINATED WITH THE OWNER AND ENGINEER.
- CONTRACTOR SHALL COORDINATE ALL WORK WITH OTHER TRADES AND INCLUDE ALL NECESSARY MODIFICATIONS TO ACCOMMODATE THEIR WORK.
- ALL EQUIPMENT AND MATERIALS INDICATED TO BE REUSED OR RELOCATED SHALL BE CLEANED AND REPAIRED OF ANY DAMAGE INCURRED AS A RESULT OF REMOVAL PRIOR TO RE-INSTALLATION.
- ALL EXISTING MECHANICAL SYSTEMS THAT REQUIRE REMOVAL AND RELOCATION AS A RESULT THE NEW CONSTRUCTION SHALL REMAIN IN SERVICE, AS PER THE ORIGINAL DESIGN INTENT, FOLLOWING COMPLETION OF THE ADDITION CONSTRUCTION.
- ACTIVE HVAC EQUIPMENT DUCTS, PIPING, ELECTRICAL, ETC. NOT SHOWN NOR INDICATED SHALL REMAIN.
- CONTRACTOR SHALL PATCH AND REPAIR ALL WALLS, FLOORS, CEILINGS, ETC. THAT ARE AFFECTED BY THE NEW WORK; PATCHING MATERIALS AND FINISH SHALL MATCH THE EXISTING OR NEW WORK IN THE IMMEDIATE VICINITY.
- ALL APPURTENANCES, EQUIPMENT, AND LABOR NOT SPECIFICALLY CALLED FOR IN THESE DRAWINGS OR SPECIFICATIONS, BUT NECESSARY TO FULFILL THE DESIGN INTENT OF THE SAME, SHALL BE CONSIDERED INCIDENTAL TO THE WORK SCOPE AND THEREBY REQUIRED BY THE CONTRACTOR.
- THE CONTRACTOR SHALL PROVIDE NEW FIRE PROTECTION PIPING, HEADS, SPRINKLERS, ETC. FOR ALL AREAS OF WORK THAT THE CEILING GRID SYSTEM IS REMOVED AND REPLACED. THE CONTRACTOR SHALL SUBMIT DRAWINGS PREPARED BY A FIRE PROTECTION ENGINEER FOR APPROVAL BY THE CONTRACTING OFFICER. THE INSTALLATION WILL BE BY A LICENSED CONTRACTOR.

#### KEYED NOTES

- AC-61 IS EXISTING TO REMAIN AS WELL AS ASSOCIATED CHILLED WATER AND CONDENSATE PIPING. DEMOLISH ASSOCIATED DUCTWORK, HANGERS, AND APPURTENANCES.
- DEMOLISH HOT WATER PIPING BACK TO SHUT-OFF VALVE. REMOVE ALL INSULATION ON HOT & CHILLED WATER RISERS AND RE-INSULATE PER SPECIFICATIONS.
- DEMOLISH HOT WATER VALVE RACK AND ASSOCIATED HOT WATER PIPING TO EACH TERMINAL UNIT. SALVAGE ALL VALVES, FITTINGS, AND APPURTENANCES AND RETURN TO OWNER.
- SALVAGE TERMINAL UNITS IN MECHANICAL ROOM AND RETURN TO OWNER.
- DEMOLISH OUTSIDE AIR DUCTWORK, DAMPER, AND ASSOCIATED CONTROLS.
- CAP AND SEAL EXISTING RETURN AIR GRILLE IN WALL.
- DEMOLISH AC-61 SUPPLY AIR DUCTWORK, AIR DEVICES, APPURTENANCES, ETC.

#### CONFLICT LEGEND

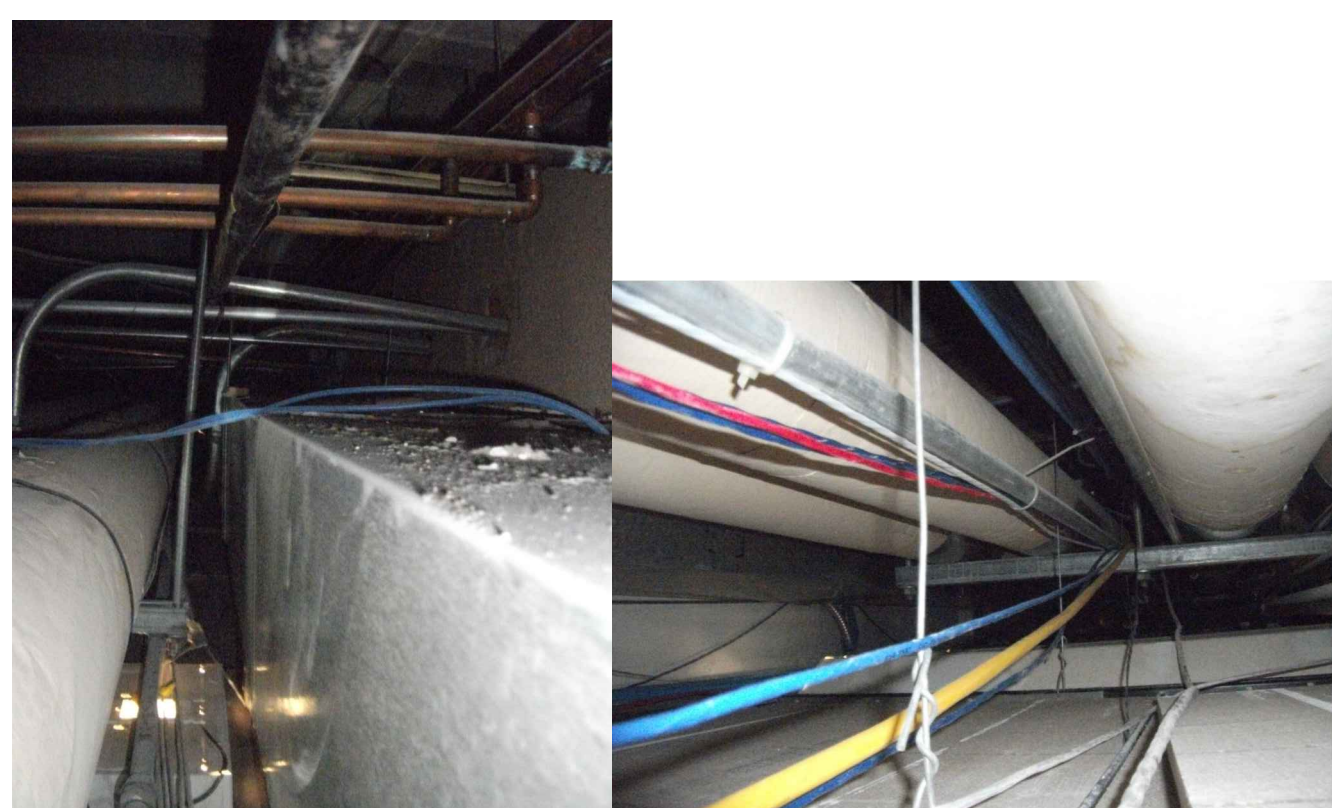
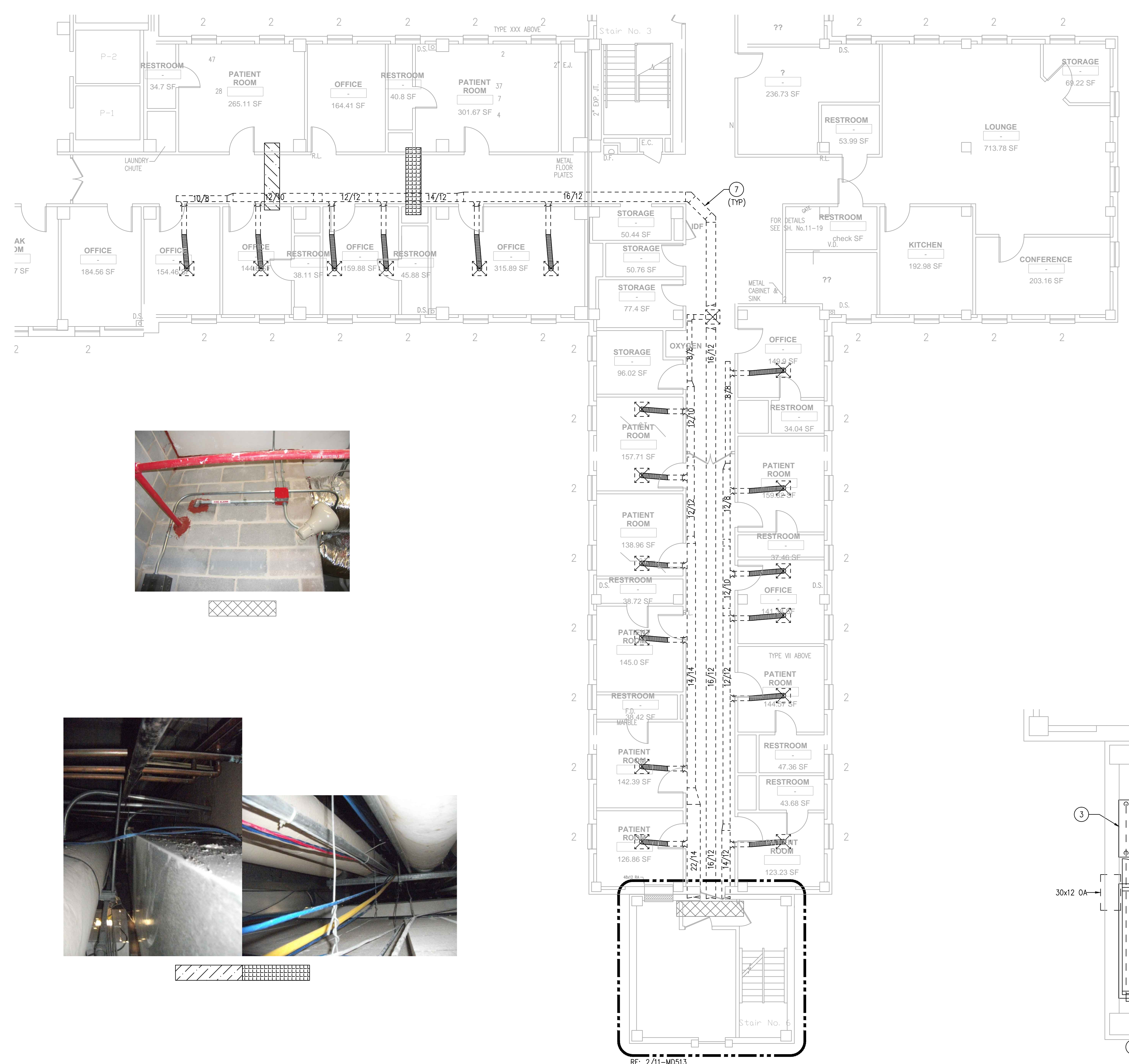
- IT ----- COORDINATE RELOCATION OF IT EQUIPMENT/WIRING WITH OWNERS REPRESENTATIVE.
- ELECTRICAL ----- RELOCATE EXISTING CONDUIT TO ACCOMMODATE NEW DUCTWORK. IT SHALL BE THE CONTRACTOR'S RESPONSIBILITY TO CAREFULLY IDENTIFY EACH SERVICE PRIOR TO RELOCATION AND NOTIFY OWNER OF ANY INTERRUPTIONS REQUIRED. COORDINATE NEW LOCATION OF CONDUITS WITH OTHER TRADES.
- FIRE PROTECTION ----- RELOCATE EXISTING FIRE SPRINKLER PIPING TO ACCOMMODATE NEW DUCTWORK. COORDINATE NEW ROUTING IN FIELD WITH OTHER TRADES. NOTIFY OWNER PRIOR TO ANY SHUTDOWNS.
- HYDRONICS ----- RELOCATE EXISTING HYDRONIC PIPING TO ACCOMMODATE NEW DUCTWORK. COORDINATE NEW ROUTING WITH OTHER TRADES. ANY SYSTEMS DRAINAGE MUST BE COORDINATED WITH OWNER.
- MED GAS ----- RELOCATE EXISTING MED GAS PIPING TO ACCOMMODATE NEW DUCTWORK. COORDINATE SHUT-DOWN WITH OWNER.
- PLUMBING ----- RELOCATE EXISTING PLUMBING TO ACCOMMODATE NEW DUCTWORK. COORDINATE NEW PIPING WITH OTHER TRADES. NOTIFY OWNER PRIOR TO SHUTTING DOWN ANY FACILITIES.



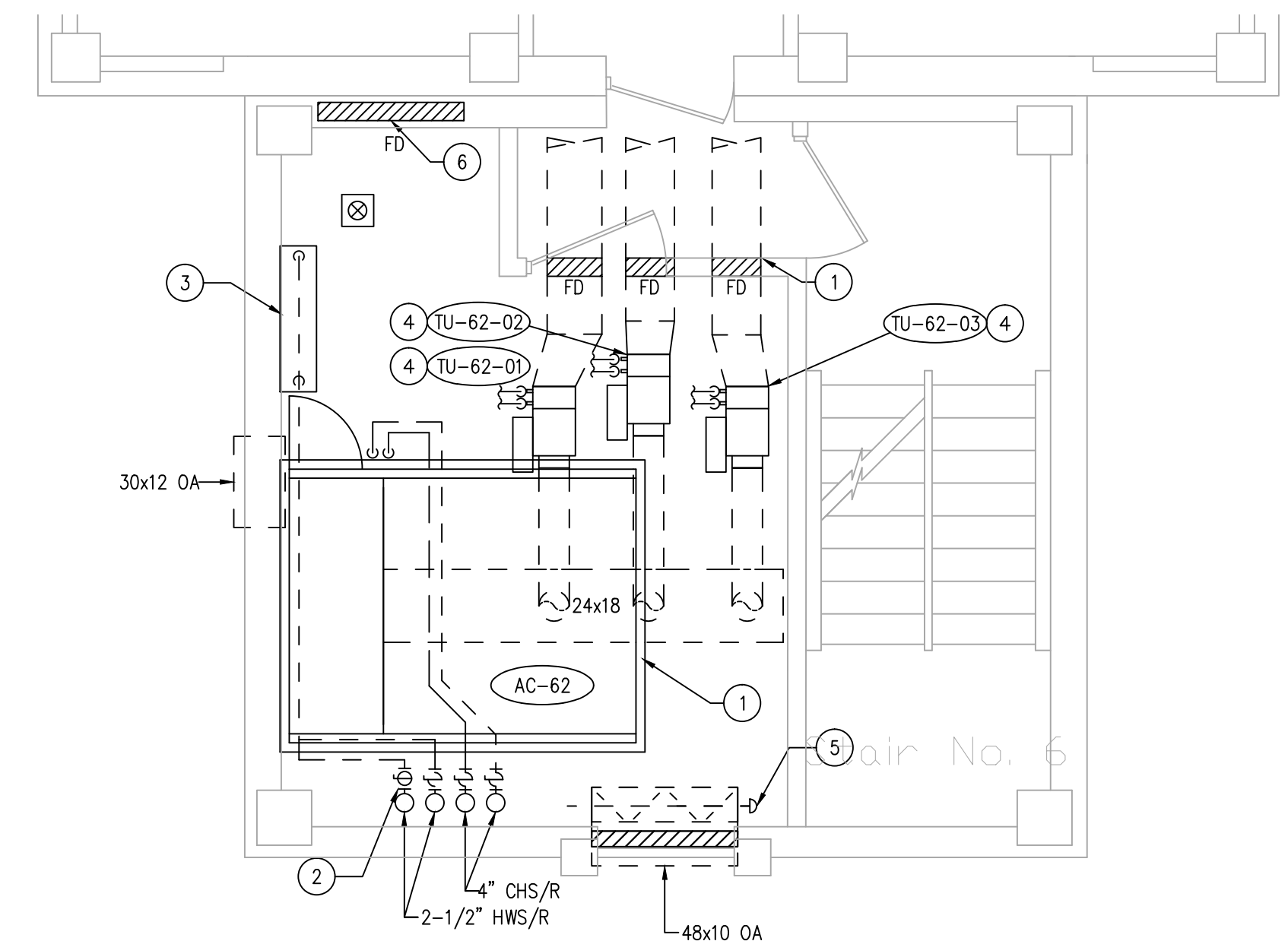
CONSULTANTS:		ARCHITECT/ENGINEERS:		Approved: Assistant Director			Approved: Chief of Staff			Approved: Chief, Engineering			Drawing Title			Project Name			Project Number			Office of Construction and Facilities Management Department of Veterans Affairs					
				Approved: Service Chief			Approved: Service Chief			Approved: Service Chief			SIXTH FLOOR MECHANICAL FLOOR PLAN AC-61 DEMOLITION			KD AIR HANDLER REPLACEMENT (AHU) PROJECT - PHASE II			671A-09-110								
				Approved: Chief, Bio-Med			Approved: Chief, EMS			Approved: Chief, Infection Control			Location			Building Number			Checked						Drawn		
				Approved: Chief, IT			Approved: Chief, M&O			Approved: Chief, Police			Kernville Veterans Hospital Veterans Affairs 2600 Memorial Blvd. Kernville, TX 78028			11			ESW						PJR		
Revisions:				Approved: Chief, Safety			Approved: Chief			Approved: Chief			Kernville Veterans Hospital Veterans Affairs 2600 Memorial Blvd. Kernville, TX 78028			Date			Drawing Number								
				TTG GOETTING, INC. F-903															11-MD513								



three eighths inch = one foot  
one eighth inch = one foot  
one quarter inch = one foot  
one half inch = one foot  
three quarters inch = one foot  
one inch = one foot  
one and one half inches = one foot  
two inches = one foot  
three inches = one foot  
four inches = one foot  
five inches = one foot  
six inches = one foot  
seven inches = one foot  
eight inches = one foot  
nine inches = one foot  
ten inches = one foot  
eleven inches = one foot  
twelve inches = one foot  
thirteen inches = one foot  
fourteen inches = one foot  
fifteen inches = one foot  
sixteen inches = one foot  
seventeen inches = one foot  
eighteen inches = one foot  
nineteen inches = one foot  
twenty inches = one foot  
twenty one inches = one foot  
twenty two inches = one foot  
twenty three inches = one foot  
twenty four inches = one foot  
twenty five inches = one foot  
twenty six inches = one foot  
twenty seven inches = one foot  
twenty eight inches = one foot  
twenty nine inches = one foot  
thirty inches = one foot  
thirty one inches = one foot  
thirty two inches = one foot  
thirty three inches = one foot  
thirty four inches = one foot  
thirty five inches = one foot  
thirty six inches = one foot  
thirty seven inches = one foot  
thirty eight inches = one foot  
thirty nine inches = one foot  
forty inches = one foot  
forty one inches = one foot  
forty two inches = one foot  
forty three inches = one foot  
forty four inches = one foot  
forty five inches = one foot  
forty six inches = one foot  
forty seven inches = one foot  
forty eight inches = one foot  
forty nine inches = one foot  
fifty inches = one foot  
fifty one inches = one foot  
fifty two inches = one foot  
fifty three inches = one foot  
fifty four inches = one foot  
fifty five inches = one foot  
fifty six inches = one foot  
fifty seven inches = one foot  
fifty eight inches = one foot  
fifty nine inches = one foot  
sixty inches = one foot  
sixty one inches = one foot  
sixty two inches = one foot  
sixty three inches = one foot  
sixty four inches = one foot  
sixty five inches = one foot  
sixty six inches = one foot  
sixty seven inches = one foot  
sixty eight inches = one foot  
sixty nine inches = one foot  
seventy inches = one foot  
seventy one inches = one foot  
seventy two inches = one foot  
seventy three inches = one foot  
seventy four inches = one foot  
seventy five inches = one foot  
seventy six inches = one foot  
seventy seven inches = one foot  
seventy eight inches = one foot  
seventy nine inches = one foot  
eighty inches = one foot  
eighty one inches = one foot  
eighty two inches = one foot  
eighty three inches = one foot  
eighty four inches = one foot  
eighty five inches = one foot  
eighty six inches = one foot  
eighty seven inches = one foot  
eighty eight inches = one foot  
eighty nine inches = one foot  
ninety inches = one foot  
ninety one inches = one foot  
ninety two inches = one foot  
ninety three inches = one foot  
ninety four inches = one foot  
ninety five inches = one foot  
ninety six inches = one foot  
ninety seven inches = one foot  
ninety eight inches = one foot  
ninety nine inches = one foot  
one hundred inches = one foot



1 DEMOLITION FLOOR PLAN — AC-62  
SCALE: 1/8"=1'-0"

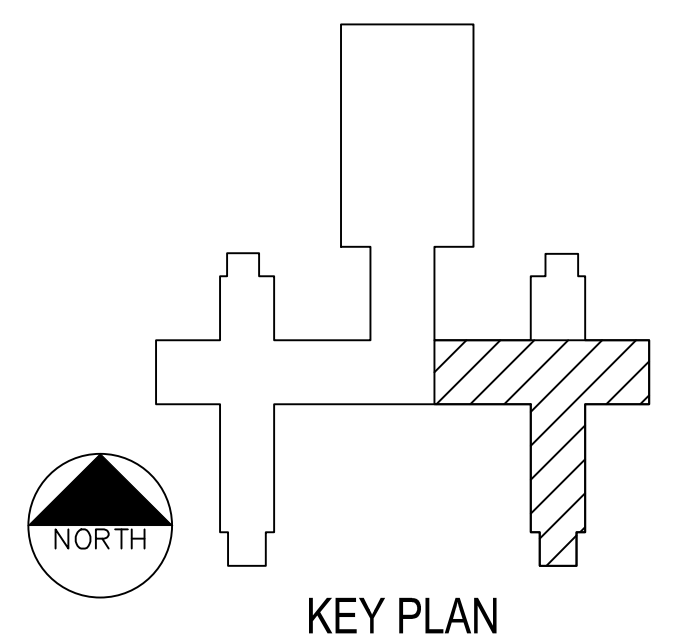


2 ENLARGED MECHANICAL ROOM FLOOR PLAN — AC-62  
SCALE: 1/4"=1'-0"

- GENERAL NOTES**
- ALL EXISTING LAYOUTS INDICATED ON THESE DOCUMENTS ARE BASED ON INFORMATION AVAILABLE AND MAY INCLUDE INACCURACIES AND BE INCOMPLETE.
  - CONTRACTORS SHALL BE SOLELY RESPONSIBLE FOR VERIFYING ACTUAL CONDITIONS AT THE SITE AND NOTING ALL DISCREPANCIES TO THE OWNER PRIOR TO WORK COMMENCEMENT; THEREAFTER, THE CONTRACTOR ACCEPTS FULL RESPONSIBILITY FOR ALL EXISTING CONDITIONS AND SHALL BE SOLELY RESPONSIBLE FOR MAKING ALL SUITABLE ADJUSTMENTS NECESSARY TO ACCOMMODATE NEW WORK AT NO ADDITIONAL COST TO THE OWNER; ANY SUCH ADJUSTMENTS SHALL BE COORDINATED WITH THE OWNER AND ENGINEER.
  - CONTRACTOR SHALL COORDINATE ALL WORK WITH OTHER TRADES AND INCLUDE ALL NECESSARY MODIFICATIONS TO ACCOMMODATE THEIR WORK.
  - ALL EQUIPMENT AND MATERIALS INDICATED TO BE REUSED OR RELOCATED SHALL BE CLEANED AND REPAIRED OF ANY DAMAGE INCURRED AS A RESULT OF REMOVAL PRIOR TO RE-INSTALLATION.
  - ALL EXISTING MECHANICAL SYSTEMS THAT REQUIRE REMOVAL AND RELOCATION AS A RESULT THE NEW CONSTRUCTION SHALL REMAIN IN SERVICE, AS PER THE ORIGINAL DESIGN INTENT, FOLLOWING COMPLETION OF THE ADDITION CONSTRUCTION.
  - ACTIVE HVAC EQUIPMENT DUCTS, PIPING, ELECTRICAL, ETC. NOT SHOWN NOR INDICATED SHALL REMAIN.
  - CONTRACTOR SHALL PATCH AND REPAIR ALL WALLS, FLOORS, CEILINGS, ETC. THAT ARE AFFECTED BY THE NEW WORK; PATCHING MATERIALS AND FINISH SHALL MATCH THE EXISTING OR NEW WORK IN THE IMMEDIATE VICINITY.
  - ALL APPURTENANCES, EQUIPMENT, AND LABOR NOT SPECIFICALLY CALLED FOR IN THESE DRAWINGS OR SPECIFICATIONS, BUT NECESSARY TO FULFILL THE DESIGN INTENT OF THE SAME, SHALL BE CONSIDERED INCIDENTAL TO THE WORK SCOPE AND THEREBY REQUIRED BY THE CONTRACTOR.
  - THE CONTRACTOR SHALL PROVIDE NEW FIRE PROTECTION PIPING, HEADS, SPRINKLERS, ETC. FOR ALL AREAS OF WORK THAT THE CEILING GRID SYSTEM IS REMOVED AND REPLACED. THE CONTRACTOR SHALL SUBMIT DRAWINGS PREPARED BY A FIRE PROTECTION ENGINEER FOR APPROVAL BY THE CONTRACTING OFFICER. THE INSTALLATION WILL BE BY A LICENSED CONTRACTOR.
- KEYED NOTES**
- AC-62 IS EXISTING TO REMAIN AS WELL AS ASSOCIATED CHILLED WATER AND CONDENSATE PIPING. DEMOLISH ASSOCIATED DUCTWORK, HANGERS, AND APPURTENANCES.
  - DEMOLISH HOT WATER PIPING BACK TO SHUT-OFF VALVE. REMOVE ALL INSULATION ON HOT & CHILLED WATER RISERS AND RE-INSULATE PER SPECIFICATIONS.
  - DEMOLISH HOT WATER VALVE RACK AND ASSOCIATED HOT WATER PIPING TO EACH TERMINAL UNIT. SALVAGE ALL VALVES, FITTINGS, AND APPURTENANCES AND RETURN TO OWNER.
  - SALVAGE TERMINAL UNITS IN MECHANICAL ROOM AND RETURN TO OWNER.
  - DEMOLISH OUTSIDE AIR DUCTWORK, DAMPER, AND ASSOCIATED CONTROLS.
  - CAP AND SEAL EXISTING RETURN AIR GRILLE IN WALL.
  - DEMOLISH AC-62 SUPPLY AIR DUCTWORK, AIR DEVICES, APPURTENANCES, ETC.

**CONFLICT LEGEND**

- IT ----- COORDINATE RELOCATION OF IT EQUIPMENT/WIRING WITH OWNERS REPRESENTATIVE.
- ELECTRICAL ----- RELOCATE EXISTING CONDUIT TO ACCOMMODATE NEW DUCTWORK. IT SHALL BE THE CONTRACTOR'S RESPONSIBILITY TO CAREFULLY IDENTIFY EACH SERVICE PRIOR TO RELOCATION AND NOTIFY OWNER OF ANY INTERRUPTIONS REQUIRED. COORDINATE NEW LOCATION OF CONDUITS WITH OTHER TRADES.
- FIRE PROTECTION ----- RELOCATE EXISTING FIRE SPRINKLER PIPING TO ACCOMMODATE NEW DUCTWORK. COORDINATE NEW ROUTING IN FIELD WITH OTHER TRADES. NOTIFY OWNER PRIOR TO ANY SHUTDOWNS.
- HYDRONICS ----- RELOCATE EXISTING HYDRONIC PIPING TO ACCOMMODATE NEW DUCTWORK. COORDINATE NEW ROUTING WITH OTHER TRADES. ANY SYSTEMS DRAINAGE MUST BE COORDINATED WITH OWNER.
- MED GAS ----- RELOCATE EXISTING MED GAS PIPING TO ACCOMMODATE NEW DUCTWORK. COORDINATE SHUT-DOWN WITH OWNER.
- PLUMBING ----- RELOCATE EXISTING PLUMBING TO ACCOMMODATE NEW DUCTWORK. COORDINATE NEW PIPING WITH OTHER TRADES. NOTIFY OWNER PRIOR TO SHUTTING DOWN ANY FACILITIES.



Revisions:		Date	
CONSULTANTS:		ARCHITECT/ENGINEERS:	
Approved: Assistant Director		Approved: Chief of Staff	
Approved: Service Chief		Approved: Service Chief	
Approved: Chief, Bio-Med		Approved: Chief, EMS	
Approved: Chief, IT		Approved: Chief, M&O	
Approved: Chief, Safety		Approved: Chief	
Approved: Chief, Engineering		Approved: Service Chief	
Approved: Chief, Infection Control		Approved: Chief, Police	
Approved: Chief		Approved: Chief	
Drawing Title		Project Name	
SIXTH FLOOR MECHANICAL FLOOR PLAN AC-62 DEMOLITION		KD AIR HANDLER REPLACEMENT (AHU) PROJECT - PHASE II	
Location		Project Number	
Kerrville Veterans Hospital Veterans Affairs 2600 Memorial Blvd. Kerrville, TX 78028		671A-09-110	
Building Number		Date	
11		07-15-13	
Checked		Drawing Number	
ESW		11-MD514	
Drawn		Dwg. of	
PJR			
Office of Construction and Facilities Management		Department of Veterans Affairs	