



2 ENLARGED MECHANICAL  
ROOM FLOOR PLAN - AC-63  
SCALE: 1/4"=1'-0"

- ### KEYED NOTES
- 1 AC-63 IS EXISTING TO REMAIN AS WELL AS ASSOCIATED CHILLED WATER AND CONDENSATE PIPING. DEMOLISH ASSOCIATED DUCTWORK AND APPURTENANCES.
  - 2 DEMOLISH HOT WATER PIPING BACK TO SHUT-OFF VALVE. REMOVE ALL INSULATION ON HOT & CHILLED WATER RISERS AND RE-INSULATE PER SPECIFICATIONS.
  - 3 DEMOLISH HOT WATER VALVE RACK AND ASSOCIATED HOT WATER PIPING TO EACH TERMINAL UNIT. SALVAGE ALL VALVES, FITTINGS, AND APPURTENANCES AND RETURN TO OWNER.
  - 4 SALVAGE TERMINAL UNITS IN MECHANICAL ROOM AND RETURN TO OWNER.
  - 5 DEMOLISH OUTSIDE AIR DUCTWORK, DAMPER, AND ASSOCIATED CONTROLS.
  - 6 CAP AND SEAL EXISTING RETURN AIR GRILLE IN WALL.
  - 7 AC-63 SUPPLY AIR DUCTWORK, AIR DEVICES, APPURTENANCES, ETC.

IT -----  
COORDINATE RELOCATION OF IT  
EQUIPMENT/WIRING WITH OWNERS  
REPRESENTATIVE.

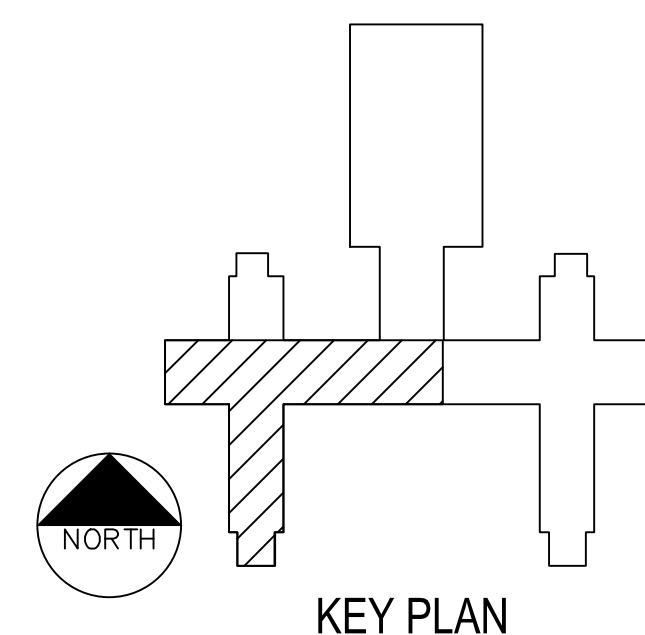
ELECTRICAL-----  
RELOCATE EXISTING CONDUIT TO  
ACCOMMODATE NEW DUCTWORK.  
IT SHALL BE THE CONTRACTOR'S  
RESPONSIBILITY TO CAREFULLY  
IDENTIFY EACH SERVICE PRIOR  
TO RELOCATION AND NOTIFY  
OWNER OF ANY INTERRUPTIONS  
REQUIRED. COORDINATE NEW  
LOCATION OF CONDUITS WITH  
OTHER TRADES.

FIRE PROTECTION-----  
RELOCATE EXISTING FIRE  
SPRINKLER PIPING TO  
ACCOMMODATE NEW DUCTWORK.  
COORDINATE NEW ROUTING IN  
FIELD WITH OTHER TRADES.  
NOTIFY OWNER PRIOR TO ANY  
SHUTDOWNS.

HYDRONICS-----  
RELOCATE EXISTING HYDRONIC  
DUCTWORK TO ACCOMMODATE NEW  
DUCTWORK. COORDINATE NEW  
ROUTING WITH OTHER TRADES.  
ANY SYSTEMS DRAINAGE MUST  
BE COORDINATED WITH OWNER.

MED GAS-----  
RELOCATE EXISTING MED GAS  
PIPING TO ACCOMMODATE NEW  
DUCTWORK. COORDINATE SHUT-  
DOWN WITH OWNER.

PLUMBING-----  
TO RELOCATE EXISTING PLUMBING  
ACCOMMODATE NEW DUCTWORK.  
COORDINATE NEW PIPING WITH  
OTHER TRADES. NOTIFY OWNER  
PRIOR TO SHUTTING DOWN ANY  
FACILITIES.

[illegible]



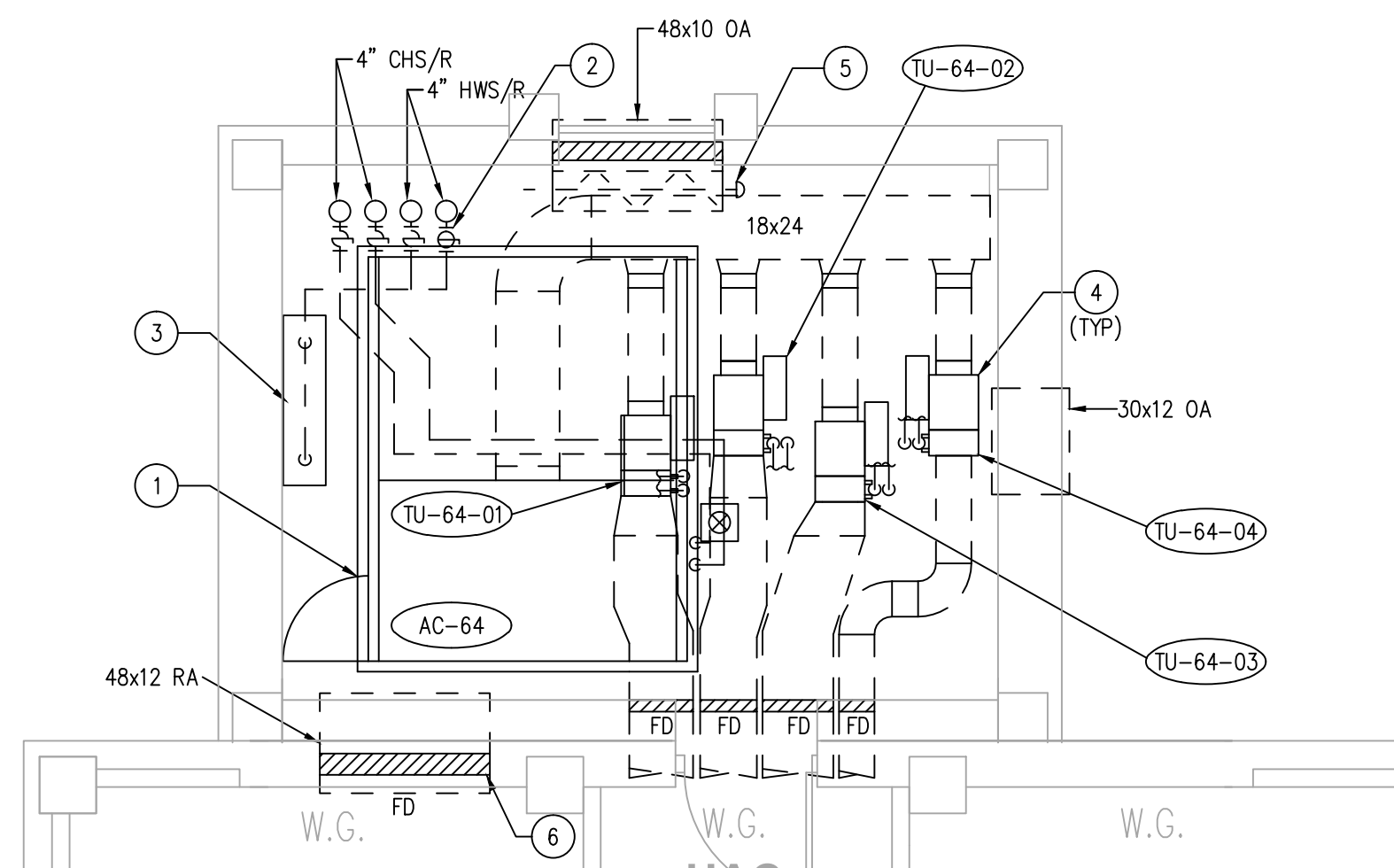
three inches = one foot  
one and one half inches = one foot  
one inch = one foot  
three quarters inch = one foot  
one half inch = one foot  
three eighths inch = one foot  
one quarter inch = one foot  
one eighth inch = one foot

GENERAL NOTES

1. ALL EXISTING LAYOUTS INDICATED ON THESE DOCUMENTS ARE BASED ON INFORMATION AVAILABLE AND MAY INCLUDE INACCURACIES AND BE INCOMPLETE.
2. CONTRACTORS SHALL BE SOLELY RESPONSIBLE FOR VERIFYING ACTUAL CONDITIONS AT THE SITE AND NOTING ALL DISCREPANCIES TO THE OWNER PRIOR TO WORK COMMENCEMENT; THEREAFTER, THE CONTRACTOR ACCEPTS FULL RESPONSIBILITY FOR ALL EXISTING CONDITIONS AND SHALL BE SOLELY RESPONSIBLE FOR MAKING ALL SUITABLE ADJUSTMENTS NECESSARY TO ACCOMMODATE NEW WORK AT NO ADDITIONAL COST TO THE OWNER. ANY SUCH ADJUSTMENTS SHALL BE COORDINATED WITH THE OWNER AND ENGINEER.
3. CONTRACTOR SHALL COORDINATE ALL WORK WITH OTHER TRADES AND INCLUDE ALL NECESSARY MODIFICATIONS TO ACCOMMODATE THEIR WORK.
4. ALL EQUIPMENT AND MATERIALS INDICATED TO BE REUSED OR RELOCATED SHALL BE CLEANED AND REPAIRED OF ANY DAMAGE INCURRED AS A RESULT OF REMOVAL PRIOR TO RE-INSTALLATION.
5. ALL EXISTING MECHANICAL SYSTEMS THAT REQUIRE REMOVAL AND RELOCATION AS A RESULT THE NEW CONSTRUCTION SHALL REMAIN IN SERVICE, AS PER THE ORIGINAL DESIGN INTENT, FOLLOWING COMPLETION OF THE ADDITION CONSTRUCTION.
6. ACTIVE HVAC EQUIPMENT DUCTS, PIPING, ELECTRICAL, ETC. NOT SHOWN NOR INDICATED SHALL REMAIN.
7. CONTRACTOR SHALL PATCH AND REPAIR ALL WALLS, FLOORS, CEILINGS, ETC. THAT ARE AFFECTED BY THE NEW WORK; PATCHING MATERIALS AND FINISH SHALL MATCH THE EXISTING OR NEW WORK IN THE IMMEDIATE VICINITY.
8. ALL APPURTENANCES, EQUIPMENT, AND LABOR NOT SPECIFICALLY CALLED FOR IN THESE DRAWINGS OR SPECIFICATIONS, BUT NECESSARY TO FULFILL THE DESIGN INTENT OF THE SAME, SHALL BE CONSIDERED INCIDENTAL TO THE WORK SCOPE AND THEREBY REQUIRED BY THE CONTRACTOR.
9. THE CONTRACTOR SHALL PROVIDE NEW FIRE PROTECTION PIPING, HEADS, SPRINKLERS, ETC. FOR ALL AREAS OF WORK THAT THE CEILING GRID SYSTEM IS REMOVED AND REPLACED. THE CONTRACTOR SHALL SUBMIT DRAWINGS PREPARED BY A FIRE PROTECTION ENGINEER FOR APPROVAL BY THE CONTRACTING OFFICER. THE INSTALLATION WILL BE BY A LICENSED CONTRACTOR.

KEYED NOTES

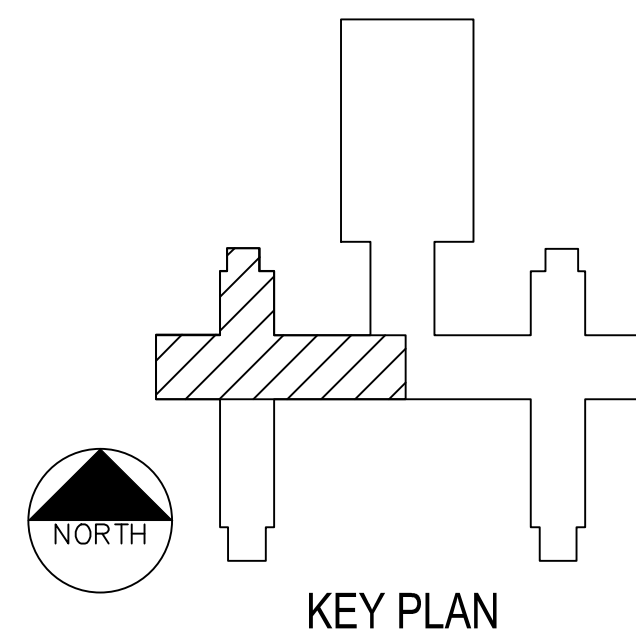
- 1 AC-64 IS EXISTING TO REMAIN AS WELL AS ASSOCIATED CHILLED WATER AND CONDENSATE PIPING. DEMOLISH ASSOCIATED DUCTWORK AND APPURTENANCES.
- 2 DEMOLISH HOT WATER PIPING BACK TO SHUT-OFF VALVE. REMOVE ALL INSULATION ON HOT & CHILLED WATER RISERS AND RE-INSULATE PER SPECIFICATIONS.
- 3 DEMOLISH HOT WATER VALVE RACK AND ASSOCIATED HOT WATER PIPING TO EACH TERMINAL UNIT. SALVAGE ALL VALVES, FITTINGS, AND APPURTENANCES AND RETURN TO OWNER.
- 4 SALVAGE TERMINAL UNITS IN MECHANICAL ROOM AND RETURN TO OWNER.
- 5 DEMOLISH OUTSIDE AIR DUCTWORK, DAMPER, AND ASSOCIATED CONTROLS.
- 6 CAP AND SEAL EXISTING RETURN AIR GRILLE IN WALL.
- 7 DEMOLISH AC-64 SUPPLY AIR DUCTWORK, AIR DEVICES, APPURTENANCES, ETC.



ENLARGED MECHANICAL ROOM FLOOR PLAN - AC-64  
SCALE: 1/4"=1'-0"

CONFLICT LEGEND

IT	COORDINATE RELOCATION OF IT EQUIPMENT/WIRING WITH OWNERS REPRESENTATIVE.	
ELECTRICAL	RELOCATE EXISTING CONDUIT TO ACCOMMODATE NEW DUCTWORK. IT SHALL BE THE CONTRACTOR'S RESPONSIBILITY TO CAREFULLY IDENTIFY EACH SERVICE PRIOR TO RELOCATION AND NOTIFY OWNER OF ANY INTERRUPTIONS REQUIRED. COORDINATE NEW LOCATION OF CONDUITS WITH OTHER TRADES.	
FIRE PROTECTION	RELOCATE EXISTING FIRE SPRINKLER PIPING TO ACCOMMODATE NEW DUCTWORK. COORDINATE NEW ROUTING IN FIELD WITH OTHER TRADES. NOTIFY OWNER PRIOR TO ANY SHUTDOWNS.	
HYDRONICS	RELOCATE EXISTING HYDRONIC PIPING TO ACCOMMODATE NEW DUCTWORK. COORDINATE NEW ROUTING WITH OTHER TRADES. ANY SYSTEMS DRAINAGE MUST BE COORDINATED WITH OWNER.	
MED GAS	RELOCATE EXISTING MED GAS PIPING TO ACCOMMODATE NEW DUCTWORK. COORDINATE SHUT-DOWN WITH OWNER.	
PLUMBING	RELOCATE EXISTING PLUMBING TO ACCOMMODATE NEW DUCTWORK. COORDINATE NEW PIPING WITH OTHER TRADES. NOTIFY OWNER PRIOR TO SHUTTING DOWN ANY FACILITIES.	



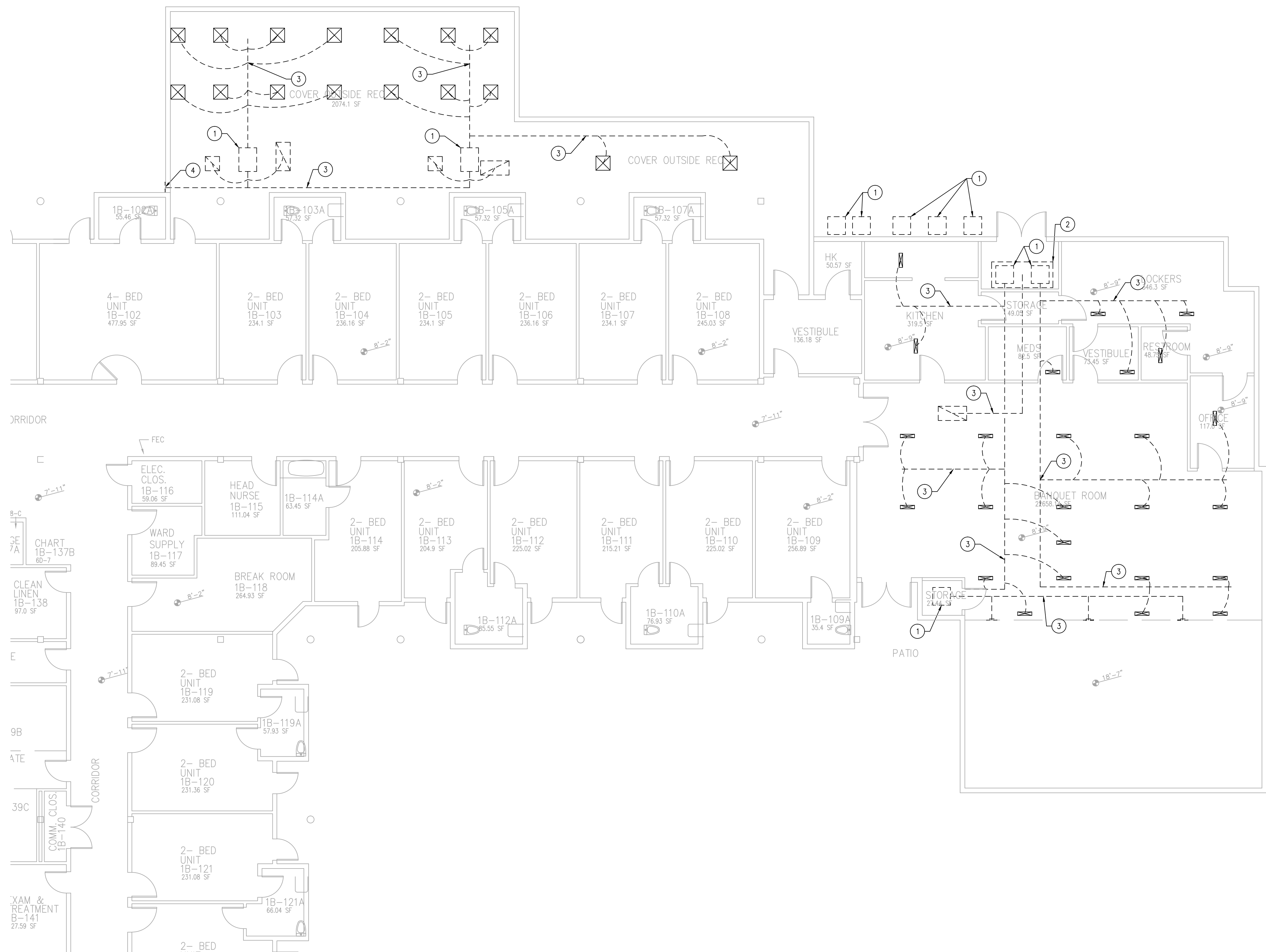
KEY PLAN

<b>CONSULTANTS:</b>		<b>ARCHITECT/ENGINEERS:</b>		Approved: Assistant Director			Approved: Chief of Staff		Approved: Chief, Engineering		Drawing Title		Project Name		Project Number		<b>Office of Construction and Facilities Management</b> Department of Veterans Affairs			
		 Goetting & Associates, Inc. 12710 Research Blvd., Suite 355 Austin, Texas 78759 512/416-1654 FAX: 512/416-7547		Approved: Service Chief			Approved: Service Chief		Approved: Service Chief		SIXTH FLOOR MECHANICAL FLOOR PLAN AC-64 DEMOLITION		KD AIR HANDLER REPLACEMENT (AHU) PROJECT - PHASE II		671A-09-110					
				Approved: Chief, Bio-Med			Approved: Chief, EMS		Approved: Chief, Infection Control		Location		Building Number		Checked				Date	
				Approved: Chief, IT			Approved: Chief, M&O		Approved: Chief, Police		Kernville Veterans Hospital Veterans Affairs 2600 Memorial Blvd. Kerrville, TX 78028		11		ESW				07-15-13	
Revisions:				TTG GOETTING, INC. F-903		Approved: Chief, Safety			Approved: Chief		Approved: Chief				Drawing Number		11-MD516			
Date													Drawn		Dwg. of					





three eighths inch = one foot  
one eighth inch = one foot  
one quarter inch = one foot  
one half inch = one foot  
three quarters inch = one foot  
one inch = one foot  
one and one half inches = one foot  
two inches = one foot  
three inches = one foot



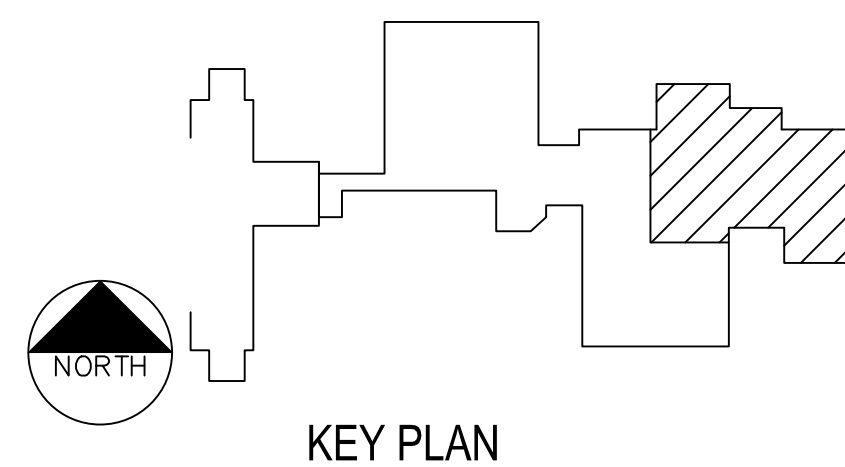
1 DEMOLITION FLOOR PLAN — FIRST FLOOR — BLDG. 96  
SCALE: 1/4"=1'-0"



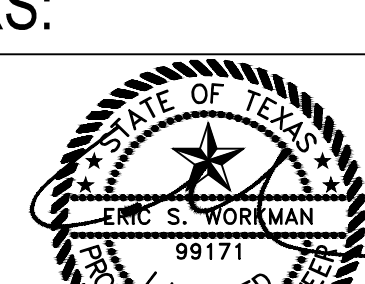
#### GENERAL NOTES

- ALL EXISTING LAYOUTS INDICATED ON THESE DOCUMENTS ARE BASED ON INFORMATION AVAILABLE AND MAY INCLUDE INACCURACIES AND BE INCOMPLETE.
- CONTRACTORS SHALL BE SOLELY RESPONSIBLE FOR VERIFYING ACTUAL CONDITIONS AT THE SITE AND NOTING ALL DISCREPANCIES TO THE OWNER PRIOR TO WORK COMMENCEMENT; THEREAFTER, THE CONTRACTOR ACCEPTS FULL RESPONSIBILITY FOR ALL EXISTING CONDITIONS AND SHALL BE SOLELY RESPONSIBLE FOR MAKING ALL SUITABLE ADJUSTMENTS NECESSARY TO ACCOMMODATE NEW WORK AT NO ADDITIONAL COST TO THE OWNER; ANY SUCH ADJUSTMENTS SHALL BE COORDINATED WITH THE OWNER AND ENGINEER.
- CONTRACTOR SHALL COORDINATE ALL WORK WITH OTHER TRADES AND INCLUDE ALL NECESSARY MODIFICATIONS TO ACCOMMODATE THEIR WORK.
- ALL EQUIPMENT AND MATERIALS INDICATED TO BE REUSED OR RELOCATED SHALL BE CLEANED AND REPAIRED OF ANY DAMAGE INCURRED AS A RESULT OF REMOVAL PRIOR TO RE-INSTALLATION.
- ALL EXISTING MECHANICAL SYSTEMS THAT REQUIRE REMOVAL AND RELOCATION AS A RESULT THE NEW CONSTRUCTION SHALL REMAIN IN SERVICE, AS PER THE ORIGINAL DESIGN INTENT, FOLLOWING COMPLETION OF THE ADDITION CONSTRUCTION.
- ACTIVE HVAC EQUIPMENT DUCTS, PIPING, ELECTRICAL, ETC. NOT SHOWN NOR INDICATED SHALL REMAIN.
- CONTRACTOR SHALL PATCH AND REPAIR ALL WALLS, FLOORS, CEILINGS, ETC. THAT ARE AFFECTED BY THE NEW WORK; PATCHING MATERIALS AND FINISH SHALL MATCH THE EXISTING OR NEW WORK IN THE IMMEDIATE VICINITY.
- ALL APPURTENANCES, EQUIPMENT, AND LABOR NOT SPECIFICALLY CALLED FOR IN THESE DRAWINGS OR SPECIFICATIONS, BUT NECESSARY TO FULFILL THE DESIGN INTENT OF THE SAME, SHALL BE CONSIDERED INCIDENTAL TO THE WORK SCOPE AND THEREBY REQUIRED BY THE CONTRACTOR.
- THE CONTRACTOR SHALL PROVIDE NEW FIRE PROTECTION PIPING, HEADS, SPRINKLERS, ETC. FOR ALL AREAS OF WORK THAT THE CEILING GRID SYSTEM IS REMOVED AND REPLACED. THE CONTRACTOR SHALL SUBMIT DRAWINGS PREPARED BY A FIRE PROTECTION ENGINEER FOR APPROVAL BY THE CONTRACTING OFFICER. THE INSTALLATION WILL BE BY A LICENSED CONTRACTOR.

#### KEYED DEMO NOTES

- DEMOLISH EXISTING FAN COIL UNIT AND ASSOCIATED CONDENSING UNIT INCLUDING REFRIGERANT PIPING, APPURTENANCES, ETC.
- DEMOLISH EQUIPMENT SUPPORTS/RETURN AIR PLENUM IN MECHANICAL ROOM. DEMOLISH EXISTING FRAME WALL IN MECHANICAL ROOM.
- DEMOLISH DUCTWORK, AIR DEVICES, HANGERS, ETC. FROM EACH FAN COIL UNIT BEING REMOVED.
- CAP AND INSULATE BACK SIDE OF WALL MOUNTED LOUVER.



				CONSULTANTS:		ARCHITECT/ENGINEERS:		Approved: Assistant Director			Approved: Chief of Staff			Approved: Chief, Engineering			Drawing Title		Project Name		Project Number		Office of Construction and Facilities Management			
						 Goetting & Associates, Inc. 12710 Research Blvd. Suite 355 Austin, Texas 78759 512/416-1454 FAX:512/416-7547		 TTC GOETTING, INC. F-903		Approved: Service Chief			Approved: Service Chief			Approved: Service Chief			FIRST FLOOR MECHANICAL FLOOR PLAN BLDG. 96 DEMOLITION		KD AIR HANDLER REPLACEMENT (AHU) PROJECT - PHASE II				671A-09-110	
		Approved: Chief, Bio-Med								Approved: Chief, EMS			Approved: Chief, Infection Control							Date						
		Approved: Chief, IT								Approved: Chief, M&O			Approved: Chief, Police			Location				07-15-13						
		Approved: Chief, Safety								Approved: Chief			Approved: Chief			Kernville Veterans Hospital Veterans Affairs 2600 Memorial Blvd. Kernville, TX 78028		Drawing Number		96-MD518						
																		Building Number		Checked		Dwg. of				
Revisions:		Date												11			ESW		PJR				Department of Veterans Affairs			



[illegible]



NOTES:

1. SUSPEND TERMINAL UNIT FROM STRUCTURE WITH ALL-THREAD AND VIBRATION ISOLATORS.
2. PROVIDE TERMINAL UNIT WITH BOTTOM MOUNT CONTROLS LOCATION, BOTTOM ACCESS DOOR, AND 24 VAC CONTROL TRANSFORMER.

NOTES:

1. SUSPEND TERMINAL UNIT FROM STRUCTURE WITH ALL-THREAD AND VIBRATION ISOLATORS.
2. PROVIDE TERMINAL UNIT WITH BOTTOM MOUNT CONTROLS LOCATION, BOTTOM ACCESS DOOR, AND 24 VAC CONTROL TRANSFORMER.

NOTES:

1. SUSPEND TERMINAL UNIT FROM STRUCTURE WITH ALL-THREAD AND VIBRATION ISOLATORS.
2. PROVIDE TERMINAL UNIT WITH BOTTOM MOUNT CONTROLS LOCATION, BOTTOM ACCESS DOOR, AND 24 VAC CONTROL

NOTES:

1. SUSPEND TERMINAL UNIT FROM STRUCTURE WITH ALL-THREAD AND VIBRATION ISOLATORS.
2. PROVIDE TERMINAL UNIT WITH BOTTOM MOUNT CONTROLS LOCATION, BOTTOM ACCESS DOOR, AND 24 VAC CONTROL TRANSFORMER.

NOTES:

1. SUSPEND TERMINAL UNIT FROM STRUCTURE WITH ALL-THREAD AND VIBRATION ISOLATORS.
2. PROVIDE TERMINAL UNIT WITH BOTTOM MOUNT CONTROLS LOCATION, BOTTOM ACCESS DOOR, AND 24 VAC CONTROL TRANSFORMER.

NOTES:

1. SUSPEND TERMINAL UNIT FROM STRUCTURE WITH ALL-THREAD AND VIBRATION ISOLATORS.
2. PROVIDE TERMINAL UNIT WITH BOTTOM MOUNT CONTROLS LOCATION, BOTTOM ACCESS DOOR, AND 24 VAC CONTROL TRANSFORMER.

NOTES:

1. SUSPEND TERMINAL UNIT FROM STRUCTURE WITH ALL-THREAD AND VIBRATION ISOLATORS.
2. PROVIDE TERMINAL UNIT WITH BOTTOM MOUNT CONTROLS LOCATION, BOTTOM ACCESS DOOR, AND 24 VAC CONTROL TRANSFORMER.

NOTES:

1. SUSPEND TERMINAL UNIT FROM STRUCTURE WITH ALL-THREAD AND VIBRATION ISOLATORS.
2. PROVIDE TERMINAL UNIT WITH BOTTOM MOUNT CONTROLS LOCATION, BOTTOM ACCESS DOOR, AND 24 VAC CONTROL TRANSFORMER

NOTES:

1. SUSPEND TERMINAL UNIT FROM STRUCTURE WITH ALL-THREAD AND VIBRATION ISOLATORS.
2. PROVIDE TERMINAL UNIT WITH BOTTOM MOUNT CONTROLS LOCATION, BOTTOM ACCESS DOOR.

NOTES:

1. SUSPEND TERMINAL UNIT FROM STRUCTURE WITH ALL-THREAD AND VIBRATION ISOLATORS.
2. PROVIDE TERMINAL UNIT WITH BOTTOM MOUNT CONTROLS LOCATION, BOTTOM ACCESS DOOR, AND 24 VAC CONTROL TRANSFORMER.

[illegible]



