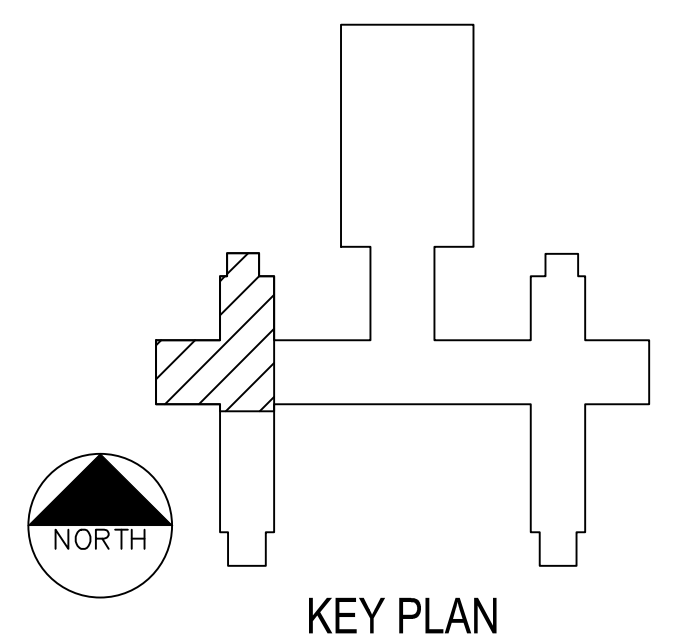
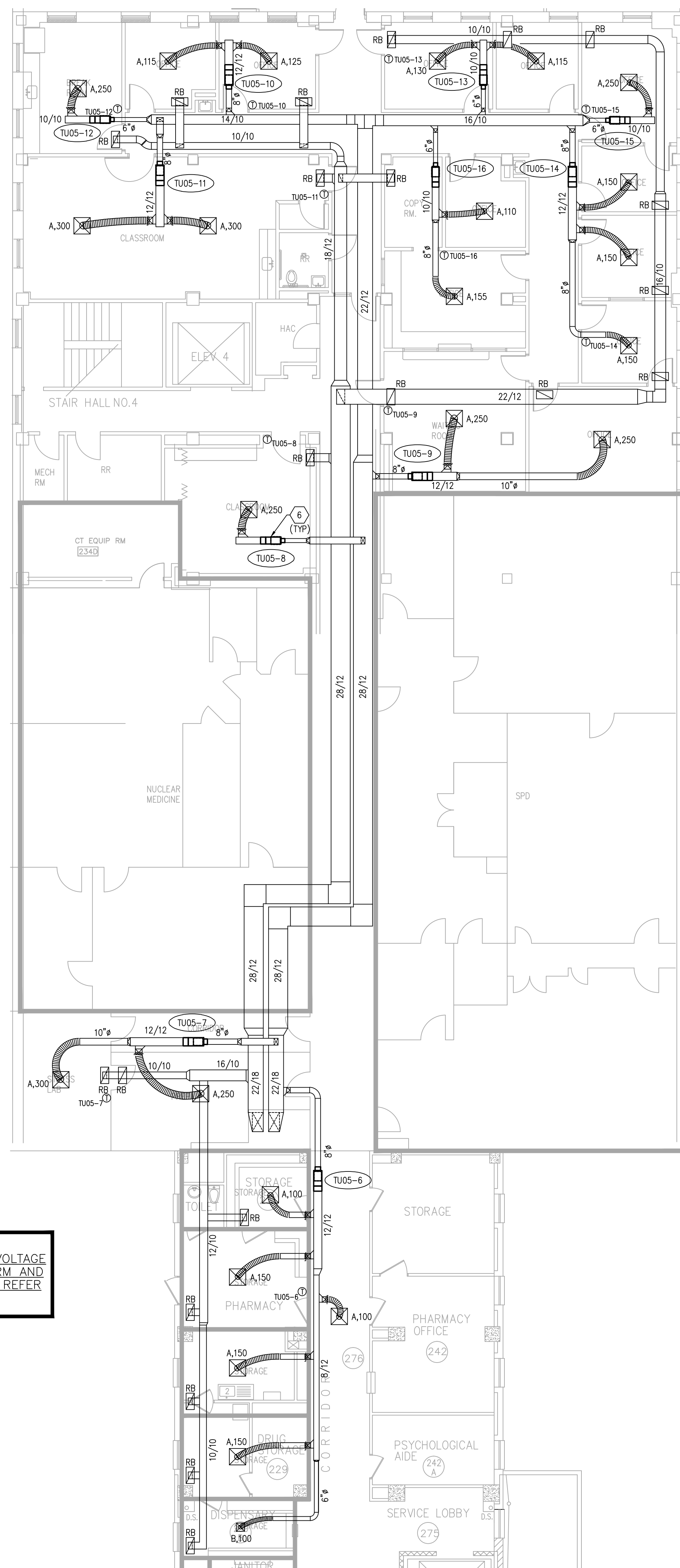


- (1) INSTALLATION OF AC-04 IN BASEMENT MECHANICAL ROOM WILL REQUIRE REMOVAL OF GRATING SHOWN AS WELL AS DOOR/FRAME TO MECHANICAL ROOM. CONTRACTOR SHALL VERIFY DIMENSIONS OF OPENINGS TO MECHANICAL ROOM AND DISASSEMBLE AC-04 AS REQUIRED TO SET UNIT IN PLACE.
- (2) INSTALL AIR HANDLING UNIT ON EXISTING CONCRETE HOUSKEEPING PAD. ALL DUCT CONNECTIONS TO UNIT SHALL BE WITH CANVAS TYPE FLEXIBLE DUCTWORK. MAINTAIN ALL FACTORY REQUIRED CLEARANCES TO UNIT.
- (3) INSTALL 48/12 SHEET METAL PLENUM BOX ABOVE DOUR AND CONNECT TO EXISTING OUTSIDE AIR DUCTWORK. ENSURE BOTTOM OF PLENUM IS SLOPED TOWARD EXTERIOR. PROVIDE 3/4" DRAIN AND BALL VALVE IN BOTTOM OF BOX AT LOWEST POINT OF SLOPE.
- (4) TRAP AND INSULATE 3/4" CONDENSATE DRAIN LINE PER SPECIFICATIONS. ROUTE FROM UNIT DISCHARGE TO FLOOR DRAIN AS SHOWN. MAINTAIN MIN. 1/8" PER FOOT FALL TOWARD DISCHARGE.
- (5) CONSTRUCT SHEET METAL PLENUM FULL SIZE OF UNIT OPENING. CONNECT OUTSIDE AIR AND RETURN AIR DUCTWORK TO PLENUM AS SHOWN.
- (6) CONTROLS CONTRACTOR TO PROVIDE AND INSTALL MOTORIZED DAMPER ACTUATOR ON UNIT.
- (7) SUSPEND TERMINAL UNIT FROM STRUCTURE WITH ALL-THREAD AND VIBRATION ISOLATORS. RE: MECHANICAL DETAILS FOR ADDITIONAL INFORMATION. ENSURE ALL SERVICE CLEARANCES ARE MAINTAINED.
- (8) INSTALL RETURN AIR GRILLE, SIZED AS SCHEDULED, IN BOTTOM OF DUCTWORK AS SHOWN.
- (9) INSTALL CEILING MOUNTED EXHAUST FAN, AS SCHEDULED, IN BARBER SHOP. PROVIDE WITH WALL CAP AND BACK-DRAFT DAMPER. FAN SHALL RUN CONTINUOUSLY DURING OCCUPIED HOURS.
- (10) INSTALL AIR FLOW MEASURING STATION IN 14/12 OUTSIDE AIR DUCTWORK.
- (11) RE: 11-MP501 FOR HYDRONIC PIPING LAYOUT.

[illegible]



1



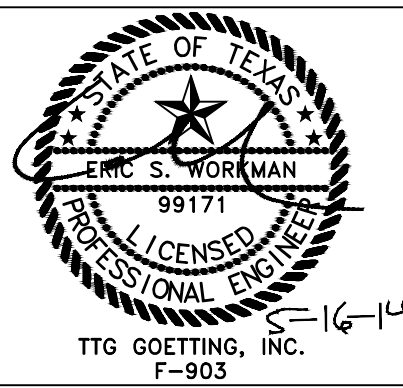
2

VA FORM 08-6231

CONSULTANTS:



ARCHITECT/ENGINEERS:



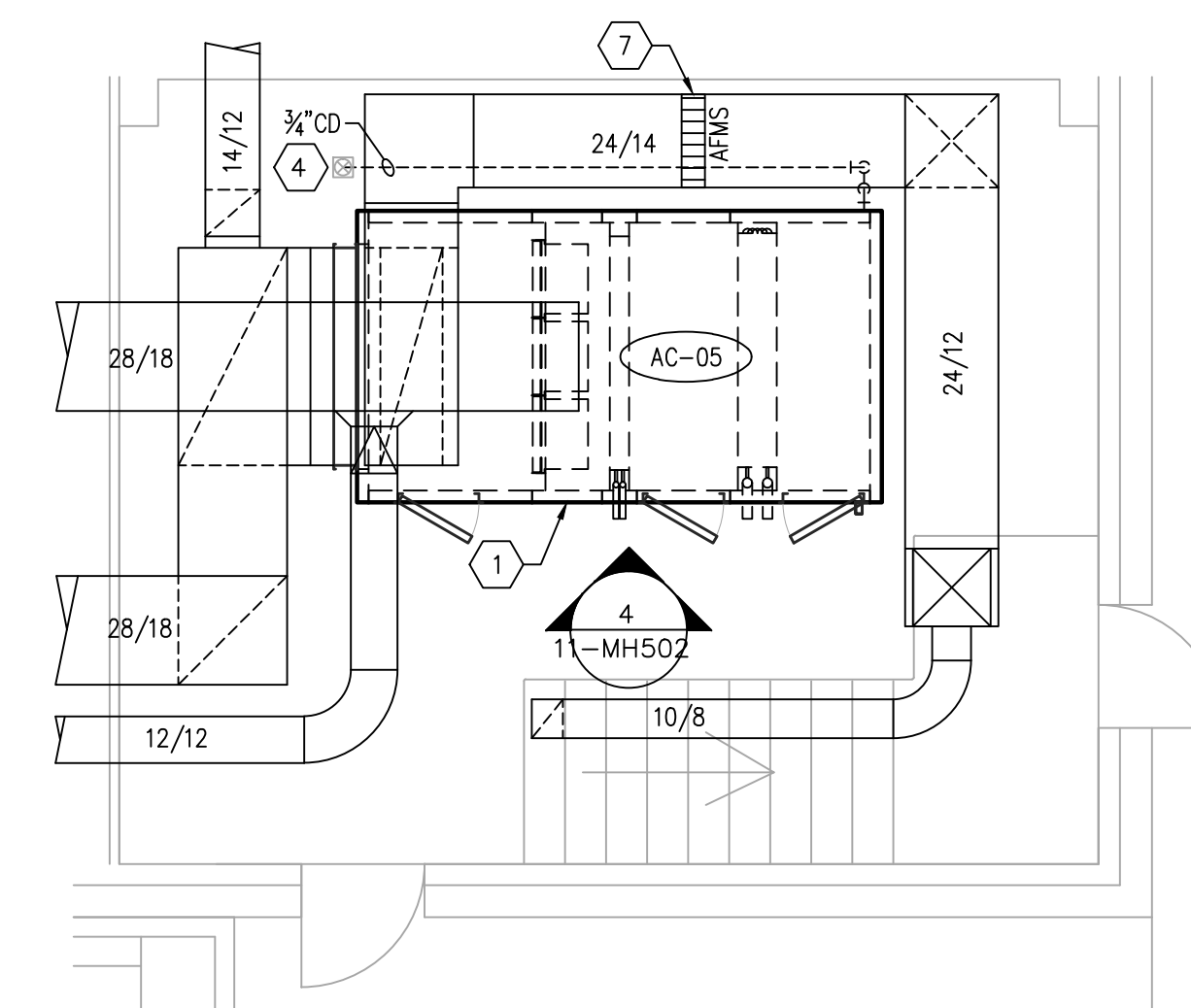
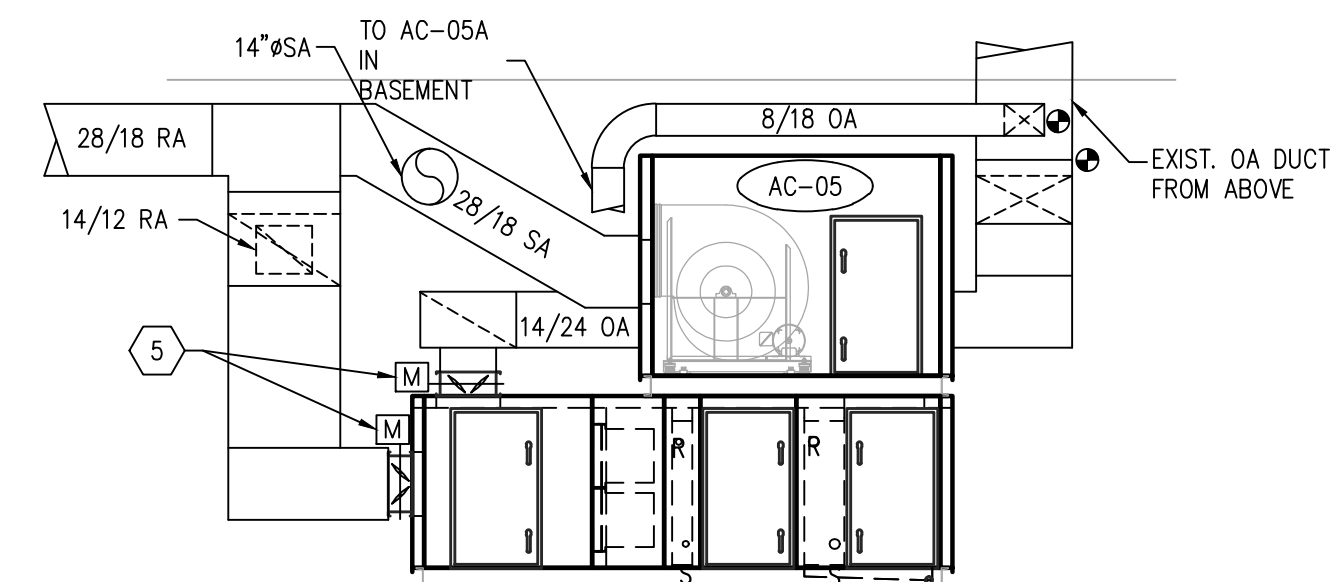
Approved: Assistant Director	Approved: Chief of Staff	Approved: Chief, Engineering
Approved: Service Chief	Approved: Service Chief	Approved: Service Chief
Approved: Chief, Bio-Med	Approved: Chief, EMS	Approved: Chief, Infection Control
Approved: Chief, IT	Approved: Chief, M&O	Approved: Chief, Police
Approved: Chief, Safety	Approved: Chief	Approved: Chief

Drawing Title	FIRST AND SECOND FLOOR MECHANICAL FLOOR PLAN AC-05 NEW WORK
Location	Kerrville Veterans Hospital Veterans Affairs 2600 Memorial Blvd. Kerrville, TX 78028

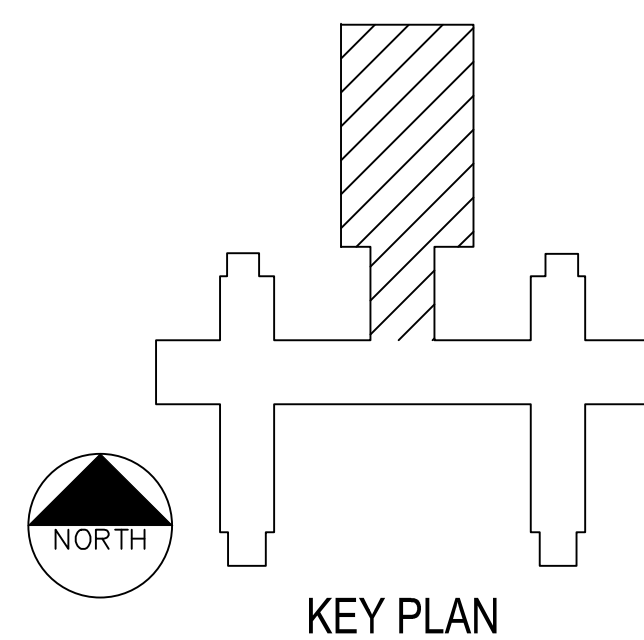
Project Name			Project Number	
KD AIR HANDLER REPLACEMENT (AHU) PROJECT - PHASE II			671A-09-110	
			Date	
			07-15-13	
			Drawing Number	
Building Number		Checked	Drawn	11-MH502
11		ESW	PJR	
			Dwg. of	

Office of  
Construction  
and Facilities  
Management

 Department of  
Veterans Affairs


$$(3)$$


4





three inches = one foot  
one and one half inches = one foot  
one inch = one foot  
three quarters inch = one foot  
one half inch = one foot  
three eighths inch = one foot  
one quarter inch = one foot  
one eighth inch = one foot

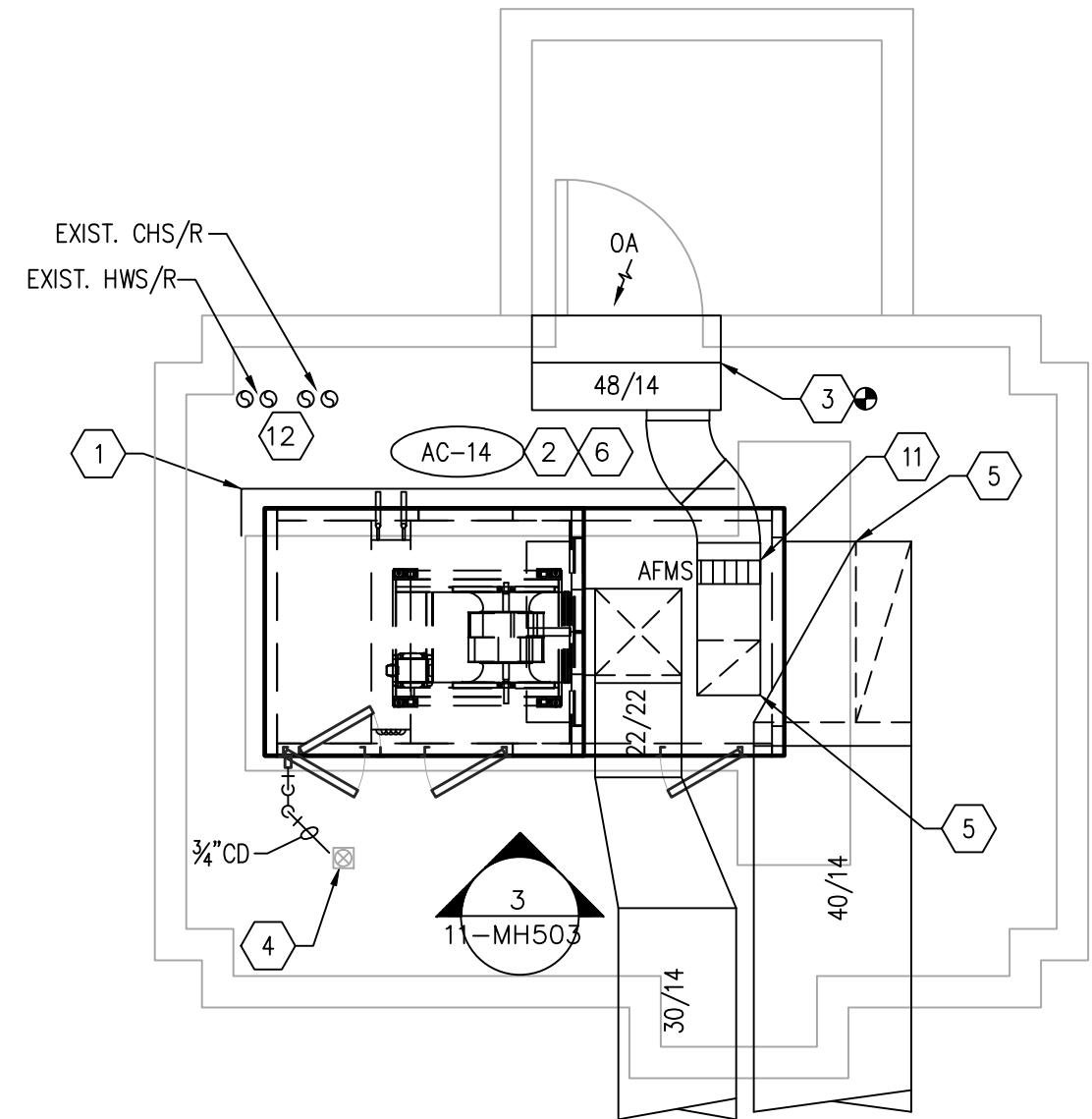
INCLUDE A LINE ITEM COST  
ALLOWANCE IN BID FOR LOW VOLTAGE  
POWER CIRCUIT AND FIRE ALARM AND  
SMOKE DETECTION INTERLOCK. REFER  
TO SPECIFICATION 23.31.00

GENERAL NOTES

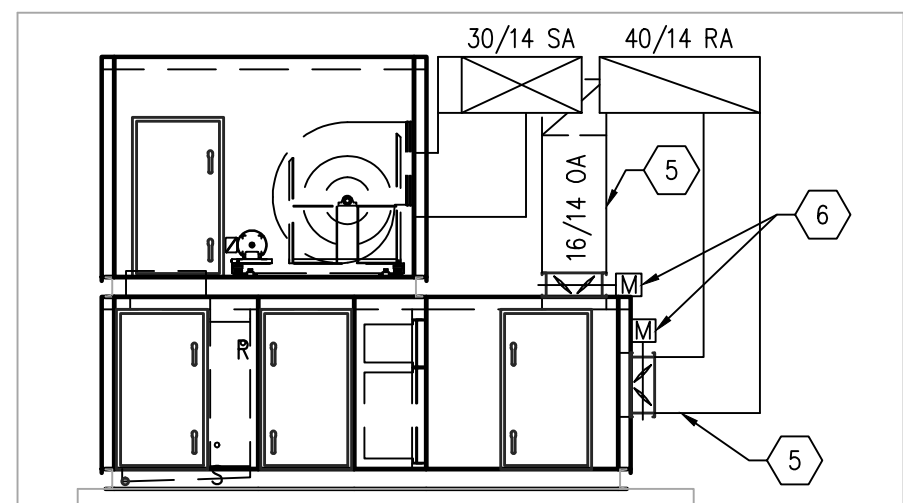
1. ALL EXISTING LAYOUTS INDICATED ON THESE DOCUMENTS ARE BASED ON INFORMATION AVAILABLE AND MAY INCLUDE INACCURACIES AND BE INCOMPLETE.
2. CONTRACTORS SHALL BE SOLELY RESPONSIBLE FOR VERIFYING ACTUAL CONDITIONS AT THE SITE AND NOTING ALL DISCREPANCIES TO THE OWNER PRIOR TO WORK COMMENCEMENT; THEREAFTER, THE CONTRACTOR ACCEPTS FULL RESPONSIBILITY FOR ALL EXISTING CONDITIONS AND SHALL BE SOLELY RESPONSIBLE FOR MAKING ALL SUITABLE ADJUSTMENTS NECESSARY TO ACCOMMODATE NEW WORK AT NO ADDITIONAL COST TO THE OWNER. ANY SUCH ADJUSTMENTS SHALL BE COORDINATED WITH THE OWNER AND ENGINEER.
3. CONTRACTOR SHALL COORDINATE ALL WORK WITH OTHER TRADES AND INCLUDE ALL NECESSARY MODIFICATIONS TO ACCOMMODATE THEIR WORK.
4. ALL EQUIPMENT AND MATERIALS INDICATED TO BE REUSED OR RELOCATED SHALL BE CLEANED AND REPAIRED OF ANY DAMAGE INCURRED AS A RESULT OF REMOVAL PRIOR TO RE-INSTALLATION.
5. ALL EXISTING MECHANICAL SYSTEMS THAT REQUIRE REMOVAL AND RELOCATION AS A RESULT THE NEW CONSTRUCTION SHALL REMAIN IN SERVICE, AS PER THE ORIGINAL DESIGN INTENT, FOLLOWING COMPLETION OF THE THE ADDITION CONSTRUCTION.
6. ACTIVE HVAC EQUIPMENT DUCTS, PIPING, ELECTRICAL, ETC. NOT SHOWN NOR INDICATED SHALL REMAIN.
7. CONTRACTOR SHALL PATCH AND REPAIR ALL WALLS, FLOORS, CEILINGS, ETC. THAT ARE AFFECTED BY THE NEW WORK; PATCHING MATERIALS AND FINISH SHALL MATCH THE EXISTING OR NEW WORK IN THE IMMEDIATE VICINITY.
8. ALL APPURTENANCES, EQUIPMENT, AND LABOR NOT SPECIFICALLY CALLED FOR IN THESE DRAWINGS OR SPECIFICATIONS, BUT NECESSARY TO FULFILL THE DESIGN INTENT OF THE SAME, SHALL BE CONSIDERED INCIDENTAL TO THE WORK SCOPE AND THEREBY REQUIRED BY THE CONTRACTOR.
9. CONTRACTOR SHALL PROVIDE PERMANENT ACCESS TO ALL EQUIPMENT LOCATED IN NON-ACCESSIBLE AREAS. THIS INCLUDES BUT IS NOT LIMITED TO DAMPERS LOCATED IN NON-LAY IN CEILING.

KEYED NOTES

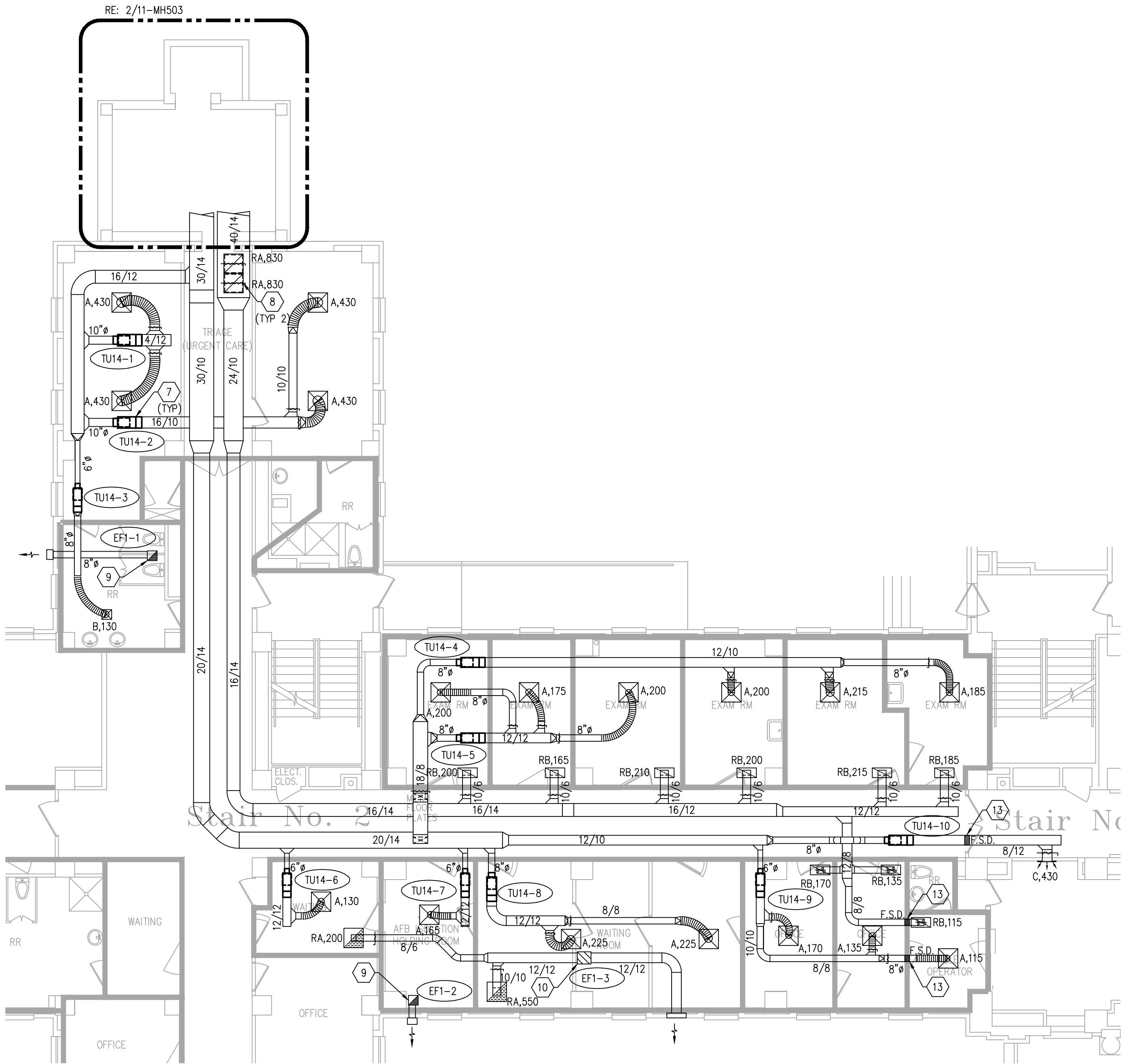
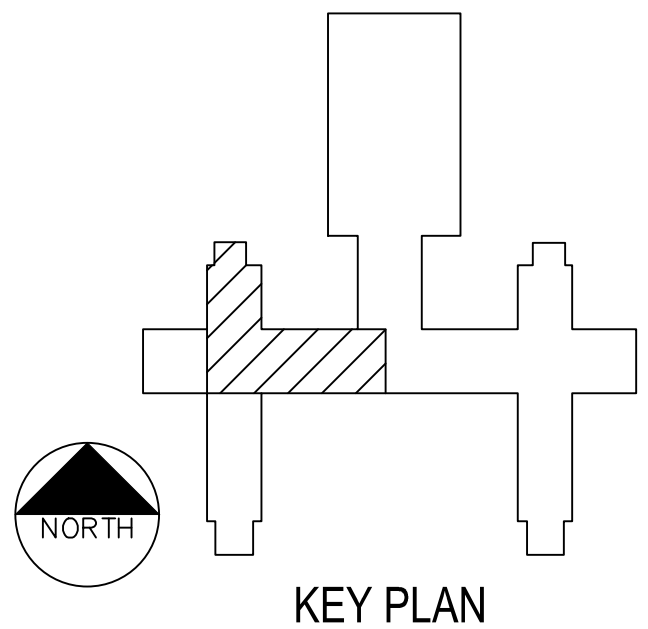
1. INSTALLATION OF AC-14 ON EXISTING HOUSEKEEPING PAD REQUIRES CONCRETE PAD TO BE EXTENDED AS SHOWN.
2. INSTALL AIR HANDLING UNIT ON CONCRETE HOUSEKEEPING PAD. ALL DUCT CONNECTIONS TO UNIT SHALL BE WITH CANVAS TYPE FLEXIBLE DUCTWORK. MAINTAIN ALL FACTORY REQUIRED CLEARANCES TO UNIT.
3. INSTALL 48/14 SHEET METAL PLENUM BOX ABOVE DOOR AND CONNECT TO EXISTING OUTSIDE AIR DUCTWORK. ENSURE BOTTOM OF PLENUM IS SLOPED TOWARD EXTERIOR. PROVIDE 3/4" DRAIN AND BALL VALVE IN BOTTOM OF BOX AT LOWEST POINT OF SLOPE.
4. TRAP AND INSULATE 3/4" CONDENSATE DRAIN LINE PER SPECIFICATIONS. ROUTE FROM UNIT DISCHARGE TO FLOOR DRAIN AS SHOWN. MAINTAIN MIN. 1/8" PER FOOT FALL TOWARD DISCHARGE.
5. CONSTRUCT SHEET METAL PLENUM FULL SIZE OF UNIT OPENING. CONNECT OUTSIDE AIR AND RETURN AIR DUCTWORK TO PLENUM AS SHOWN.
6. CONTROLS CONTRACTOR TO PROVIDE AND INSTALL MOTORIZED DAMPER ACTUATOR ON UNIT.
7. SUSPEND TERMINAL UNIT FROM STRUCTURE WITH ALL-THREAD AND VIBRATION ISOLATORS. RE: MECHANICAL DETAILS FOR ADDITIONAL INFORMATION. ENSURE ALL SERVICE CLEARANCES ARE MAINTAINED.
8. CONNECT RETURN AIR GRILLE, SIZED AS SCHEDULED, TO BOTTOM OF DUCTWORK AS SHOWN.
9. INSTALL CEILING MOUNTED EXHAUST FAN AS SCHEDULED. PROVIDE WITH WALL CAP AND BACK-DRAFT DAMPER. FAN SHALL RUN CONTINUOUSLY DURING OCCUPIED HOURS.
10. SUSPEND IN-LINE EXHAUST FAN FROM STRUCTURE WITH ALL-THREAD AND VIBRATION ISOLATORS. MAINTAIN MIN 36" STRAIGHT DUCT ON INLET AND OUTLET SIDE OF FAN.
11. INSTALL AIR FLOW MEASURING STATION IN 16/14 OUTSIDE AIR DUCTWORK.
12. RE: 11-MP503 FOR HYDRONIC PIPING LAYOUT.
13. PROVIDE AND INSTALL COMBINATION FIRE/SMOKE DAMPER IN RATED WALL ASSEMBLY.



2 ENLARGED MECHANICAL ROOM FLOOR PLAN - AC-14  
SCALE: 1/4" = 1'-0"



3 SECTION VIEW - AC-14  
SCALE: 1/4" = 1'-0"



1 NEW WORK FLOOR PLAN - AC-14  
SCALE: 1/8" = 1'-0"

--	--	--	--	--	--	--	--	--	--	--	--	--	--	--	--	--	--	--	--	--	--	--	--	--	--	--	--	--	--	--	--	--	--	--	--	--	--	--	--	--	--	--	--	--	--	--	--	--	--	--	--	--	--	--	--	--	--	--	--	--	--	--	--	--	--	--	--	--	--	--	--	--	--	--	--	--	--	--	--	--	--	--	--	--	--	--	--	--	--	--	--	--	--	--	--	--	--	--	--	--	--	--	--	--	--	--	--	--	--	--	--	--	--	--	--	--	--	--	--	--	--	--	--	--	--	--	--	--	--	--	--	--	--	--	--	--	--	--	--	--	--	--	--	--	--	--	--	--	--	--	--	--	--	--	--	--	--	--	--	--	--	--	--	--	--	--	--	--	--	--	--	--	--	--	--	--	--	--	--	--	--	--	--	--	--	--	--	--	--	--	--	--	--	--	--	--	--	--	--	--	--	--	--	--	--	--	--	--	--	--	--	--	--	--	--	--	--	--	--	--	--	--	--	--	--	--	--	--	--	--	--	--	--	--	--	--	--	--	--	--	--	--	--	--	--	--	--	--	--	--	--	--	--	--	--	--	--	--	--	--	--	--	--	--	--	--	--	--	--	--	--	--	--	--	--	--	--	--	--	--	--	--	--	--	--	--	--	--	--	--	--	--	--	--	--	--	--	--	--	--	--	--	--	--	--	--	--	--	--	--	--	--	--	--	--	--	--	--	--	--	--	--	--	--	--	--	--	--	--	--	--	--	--	--	--	--	--	--	--	--	--	--	--	--	--	--	--	--	--	--	--	--	--	--	--	--	--	--	--	--	--	--	--	--	--	--	--	--	--	--	--	--	--	--	--	--	--	--	--	--	--	--	--	--	--	--	--	--	--	--	--	--	--	--	--	--	--	--	--	--	--	--	--	--	--	--	--	--	--	--	--	--	--	--	--	--	--	--	--	--	--	--	--	--	--	--	--	--	--	--	--	--	--	--	--	--	--	--	--	--	--	--	--	--	--	--	--	--	--	--	--	--	--	--	--	--	--	--	--	--	--	--	--	--	--	--	--	--	--	--	--	--	--	--	--	--	--	--	--	--	--	--	--	--	--	--	--	--	--	--	--	--	--	--	--	--	--	--	--	--	--	--	--	--	--	--	--	--	--	--	--	--	--	--	--	--	--	--	--	--	--	--	--	--	--	--	--	--	--	--	--	--	--	--	--	--	--	--	--	--	--	--	--	--	--	--	--	--	--	--	--	--	--	--	--	--	--	--	--	--	--	--	--	--	--	--	--	--	--	--	--	--	--	--	--	--	--	--	--	--	--	--	--	--	--	--	--	--	--	--	--	--	--	--	--	--	--	--	--	--	--	--	--	--	--	--	--	--	--	--	--	--	--	--	--	--	--	--	--	--	--	--	--	--	--	--	--	--	--	--	--	--	--	--	--	--	--	--	--	--	--	--	--	--	--	--	--	--	--	--	--	--	--	--	--	--	--	--	--	--	--	--	--	--	--	--	--	--	--	--	--	--	--	--	--	--	--	--	--	--	--	--	--	--	--	--	--	--	--	--	--	--	--	--	--	--	--	--	--	--	--	--	--	--	--	--	--	--	--	--	--	--	--	--	--	--	--	--	--	--	--	--	--	--	--	--	--	--	--	--	--	--	--	--	--	--	--	--	--	--	--	--	--	--	--	--	--	--	--	--	--	--	--	--	--	--	--	--	--	--	--	--	--	--	--	--	--	--	--	--	--	--	--	--	--	--	--	--	--	--	--	--	--	--	--	--	--	--	--	--	--	--	--	--	--	--	--	--	--	--	--	--	--	--	--	--	--	--	--	--	--	--	--	--	--	--	--	--	--	--	--	--	--	--	--	--	--	--	--	--	--	--	--	--	--	--	--	--	--	--	--	--	--	--	--	--	--	--	--	--	--	--	--	--	--	--	--	--	--	--	--	--	--	--	--	--	--	--	--	--	--	--	--	--	--	--	--	--	--	--	--	--	--	--	--	--	--	--	--	--	--	--	--	--	--	--	--	--	--	--	--	--	--	--	--	--	--	--	--	--	--	--	--	--	--	--	--	--	--	--	--	--	--	--	--	--	--	--	--	--	--	--	--	--	--	--	--	--	--	--	--	--	--	--	--	--	--	--	--	--	--	--	--	--	--	--	--	--	--	--	--	--	--	--	--	--	--	--	--	--	--	--	--	--	--	--	--	--	--	--	--	--	--	--	--	--	--	--	--	--	--	--	--	--	--	--	--	--	--	--	--	--	--	--	--	--	--	--	--	--	--	--	--	--	--	--	--	--	--	--	--	--	--	--	--	--	--	--	--	--	--	--	--	--	--	--	--	--	--	--	--	--	--	--	--	--	--	--	--	--	--	--	--	--	--	--	--	--	--	--	--	--	--	--	--	--	--	--	--	--	--	--	--	--	--	--	--	--	--	--	--	--	--	--	--	--	--	--	--	--	--	--	--	--	--	--	--	--	--	--	--	--	--	--	--	--	--	--	--	--	--	--	--	--	--	--	--	--	--	--	--	--	--	--	--	--	--	--	--	--	--	--	--	--	--	--	--	--	--	--	--	--	--	--	--	--	--	--	--	--	--	--	--	--	--	--	--	--	--	--	--	--	--	--	--	--	--	--	--	--	--	--	--	--	--	--	--	--	--	--	--	--	--	--	--	--	--	--	--	--	--	--	--	--	--	--	--	--	--	--	--	--	--	--	--	--	--	--	--	--	--	--	--	--	--	--	--	--	--	--	--	--	--	--	--	--	--	--	--	--	--	--	--	--	--	--	--	--	--	--	--	--	--	--	--	--	--	--	--	--	--	--	--



three inches = one foot  
one and one half inches = one foot  
one inch = one foot  
three quarters inch = one foot  
one half inch = one foot  
one quarter inch = one foot  
three eighths inch = one foot  
one eighth inch = one foot

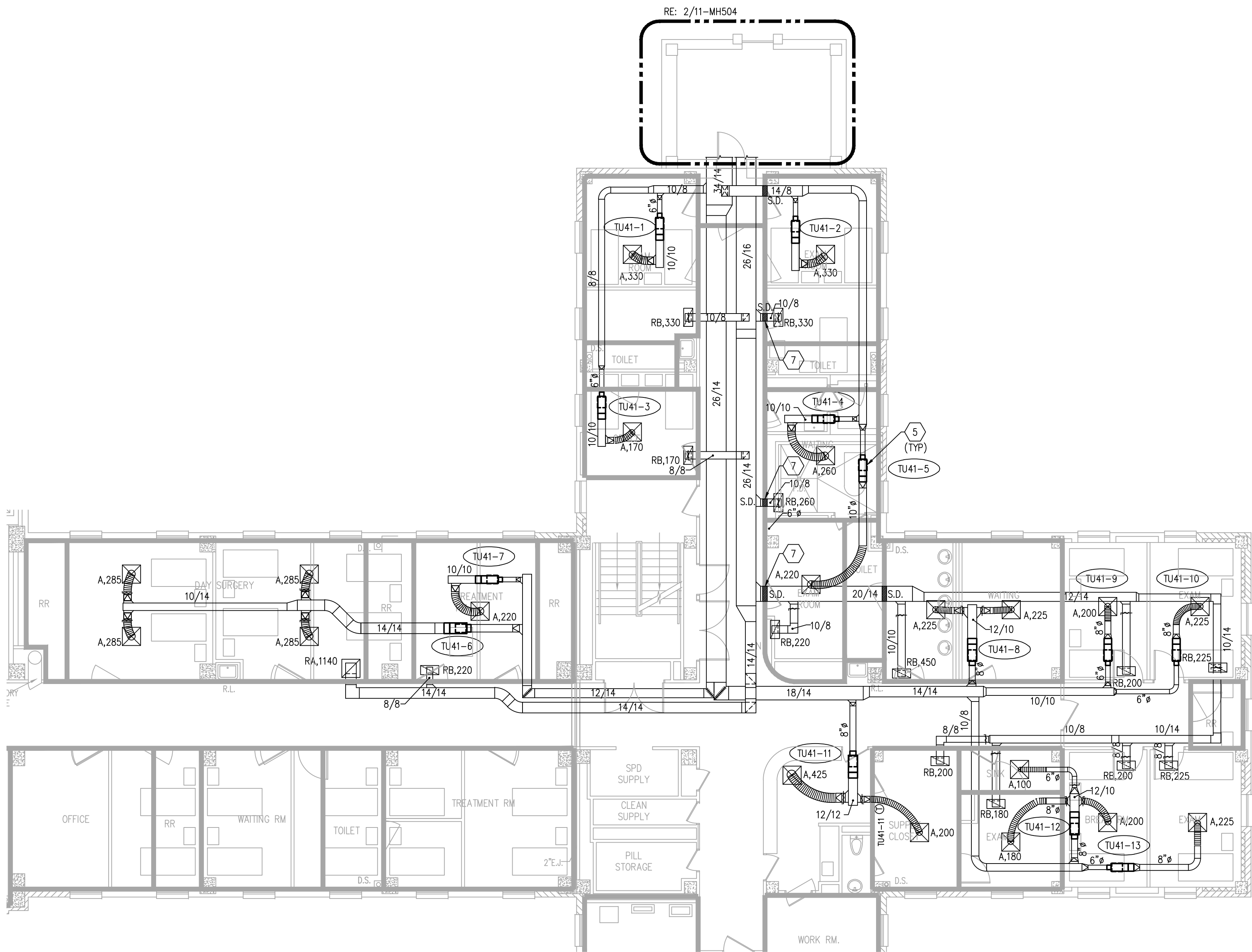
INCLUDE A LINE ITEM COST  
ALLOWANCE IN BID FOR LOW VOLTAGE  
POWER CIRCUIT AND FIRE ALARM AND  
SMOKE DETECTION INTERLOCK. REFER  
TO SPECIFICATION 23.31.00

GENERAL NOTES

1. ALL EXISTING LAYOUTS INDICATED ON THESE DOCUMENTS ARE BASED ON INFORMATION AVAILABLE AND MAY INCLUDE INACCURACIES AND BE INCOMPLETE.
2. CONTRACTORS SHALL BE SOLELY RESPONSIBLE FOR VERIFYING ACTUAL CONDITIONS AT THE SITE AND NOTING ALL DISCREPANCIES TO THE OWNER PRIOR TO WORK COMMENCEMENT; THEREAFTER, THE CONTRACTOR ACCEPTS FULL RESPONSIBILITY FOR ALL EXISTING CONDITIONS AND SHALL BE SOLELY RESPONSIBLE FOR MAKING ALL SUITABLE ADJUSTMENTS NECESSARY TO ACCOMMODATE NEW WORK AT NO ADDITIONAL COST TO THE OWNER. ANY SUCH ADJUSTMENTS SHALL BE COORDINATED WITH THE OWNER AND ENGINEER.
3. CONTRACTOR SHALL COORDINATE ALL WORK WITH OTHER TRADES AND INCLUDE ALL NECESSARY MODIFICATIONS TO ACCOMMODATE THEIR WORK.
4. ALL EQUIPMENT AND MATERIALS INDICATED TO BE REUSED OR RELOCATED SHALL BE CLEANED AND REPAIRED OF ANY DAMAGE INCURRED AS A RESULT OF REMOVAL PRIOR TO RE-INSTALLATION.
5. ALL EXISTING MECHANICAL SYSTEMS THAT REQUIRE REMOVAL AND RELOCATION AS A RESULT THE NEW CONSTRUCTION SHALL REMAIN IN SERVICE, AS PER THE ORIGINAL DESIGN INTENT, FOLLOWING COMPLETION OF THE THE ADDITION CONSTRUCTION.
6. ACTIVE HVAC EQUIPMENT DUCTS, PIPING, ELECTRICAL, ETC. NOT SHOWN NOR INDICATED SHALL REMAIN.
7. CONTRACTOR SHALL PATCH AND REPAIR ALL WALLS, FLOORS, CEILINGS, ETC. THAT ARE AFFECTED BY THE NEW WORK; PATCHING MATERIALS AND FINISH SHALL MATCH THE EXISTING OR NEW WORK IN THE IMMEDIATE VICINITY.
8. ALL APPURTENANCES, EQUIPMENT, AND LABOR NOT SPECIFICALLY CALLED FOR IN THESE DRAWINGS OR SPECIFICATIONS, BUT NECESSARY TO FULFILL THE DESIGN INTENT OF THE SAME, SHALL BE CONSIDERED INCIDENTAL TO THE WORK SCOPE AND THEREBY REQUIRED BY THE CONTRACTOR.
9. CONTRACTOR SHALL PROVIDE PERMANENT ACCESS TO ALL EQUIPMENT LOCATED IN NON-ACCESSABLE AREAS. THIS INCLUDES, BUT IS NOT LIMITED TO DAMPERS LOCATED ABOVE NON-LAY IN CEILINGS.

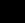
KEYED NOTES

- 1 AC-41 IS EXISTING TO REMAIN. CONTRACTOR SHALL FIX RETURN AIR DAMPER IN THE 100% OPEN POSITION AND DISABLE IT'S CONTROLS. ALL DUCT CONNECTIONS TO UNIT SHALL BE WITH CANVAS TYPE FLEXIBLE DUCTWORK. MAINTAIN ALL FACTORY REQUIRED CLEARANCES TO UNIT. CHILLED WATER PIPING AND CONDENSATE LINE TO REMAIN.
- 2 INSTALL SHEET METAL PLENUM BOX FULL WIDTH OF LOUVER OPENING (APPROX. 48" X 22" HIGH X 18" DEEP. ENSURE BOTTOM OF PLENUM IS SLOPED TOWARD EXTERIOR. PROVIDE 3/4" DRAIN AND BALL VALVE IN BOTTOM OF BOX AT LOWEST POINT OF SLOPE.
- 3 CONSTRUCT SHEET METAL PLENUM FULL SIZE OF UNIT OPENING. CONNECT OUTSIDE AIR AND RETURN AIR DUCTWORK TO PLENUM AS SHOWN.
- 4 MECHANICAL CONTRACTOR TO INSTALL MOTORIZED CONTROL DAMPER IN DUCTWORK. CONTROLS CONTRACTOR TO PROVIDE AND INSTALL ACTUATOR ON DUCT MOUNTED DAMPER.
- 5 SUSPEND TERMINAL UNIT FROM STRUCTURE WITH ALL-THREAD AND VIBRATION ISOLATORS. RE: MECHANICAL DETAILS FOR ADDITIONAL INFORMATION. ENSURE ALL SERVICE CLEARANCES ARE MAINTAINED.
- 6 RE: 11-MP504 FOR HYDRONIC PIPING LAYOUT.
- 7 PROVIDE AND INSTALL SMOKE DAMPER IN RATED WALL ASSEMBLY.





Office of  
Construction  
and Facilities  
Management

 Department of  
Veterans Affairs



three inches = one foot  
one and one half inches = one foot  
one inch = one foot  
three quarters inch = one foot  
one half inch = one foot  
three eighths inch = one foot  
one quarter inch = one foot  
one eighth inch = one foot

