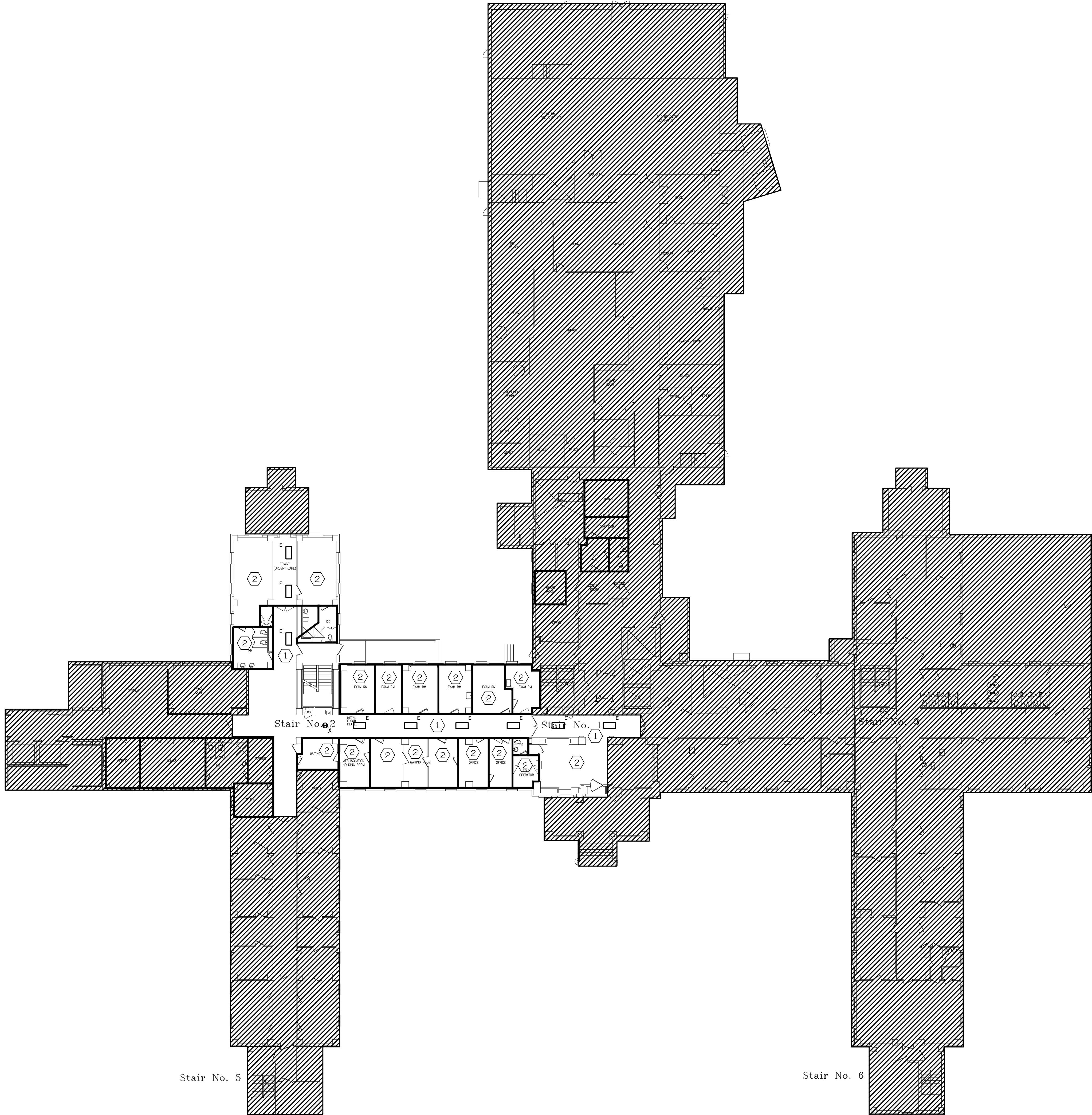


one eighth inch = one foot
one quarter inch = one foot
three eighths inch = one foot
one half inch = one foot
three quarters inch = one foot
one inch = one foot
one and one half inch = one foot
two inch = one foot
three inches = one foot
four inch = one foot
five inch = one foot
six inch = one foot
seven inch = one foot
eight inch = one foot
nine inch = one foot
ten inch = one foot
eleven inch = one foot
twelve inch = one foot
thirteen inch = one foot
fourteen inch = one foot
fifteen inch = one foot
sixteen inch = one foot
seventeen inch = one foot
eighteen inch = one foot
nineteen inch = one foot
twenty inch = one foot
twenty one inch = one foot
twenty two inch = one foot
twenty three inch = one foot
twenty four inch = one foot
twenty five inch = one foot
twenty six inch = one foot
twenty seven inch = one foot
twenty eight inch = one foot
twenty nine inch = one foot
thirty inch = one foot
thirty one inch = one foot
thirty two inch = one foot
thirty three inch = one foot
thirty four inch = one foot
thirty five inch = one foot
thirty six inch = one foot
thirty seven inch = one foot
thirty eight inch = one foot
thirty nine inch = one foot
forty inch = one foot
forty one inch = one foot
forty two inch = one foot
forty three inch = one foot
forty four inch = one foot
forty five inch = one foot
forty six inch = one foot
forty seven inch = one foot
forty eight inch = one foot
forty nine inch = one foot
fifty inch = one foot
fifty one inch = one foot
fifty two inch = one foot
fifty three inch = one foot
fifty four inch = one foot
fifty five inch = one foot
fifty six inch = one foot
fifty seven inch = one foot
fifty eight inch = one foot
fifty nine inch = one foot
sixty inch = one foot
sixty one inch = one foot
sixty two inch = one foot
sixty three inch = one foot
sixty four inch = one foot
sixty five inch = one foot
sixty six inch = one foot
sixty seven inch = one foot
sixty eight inch = one foot
sixty nine inch = one foot
seventy inch = one foot
seventy one inch = one foot
seventy two inch = one foot
seventy three inch = one foot
seventy four inch = one foot
seventy five inch = one foot
seventy six inch = one foot
seventy seven inch = one foot
seventy eight inch = one foot
seventy nine inch = one foot
eighty inch = one foot
eighty one inch = one foot
eighty two inch = one foot
eighty three inch = one foot
eighty four inch = one foot
eighty five inch = one foot
eighty six inch = one foot
eighty seven inch = one foot
eighty eight inch = one foot
eighty nine inch = one foot
ninety inch = one foot
ninety one inch = one foot
ninety two inch = one foot
ninety three inch = one foot
ninety four inch = one foot
ninety five inch = one foot
ninety six inch = one foot
ninety seven inch = one foot
ninety eight inch = one foot
ninety nine inch = one foot
one hundred inch = one foot

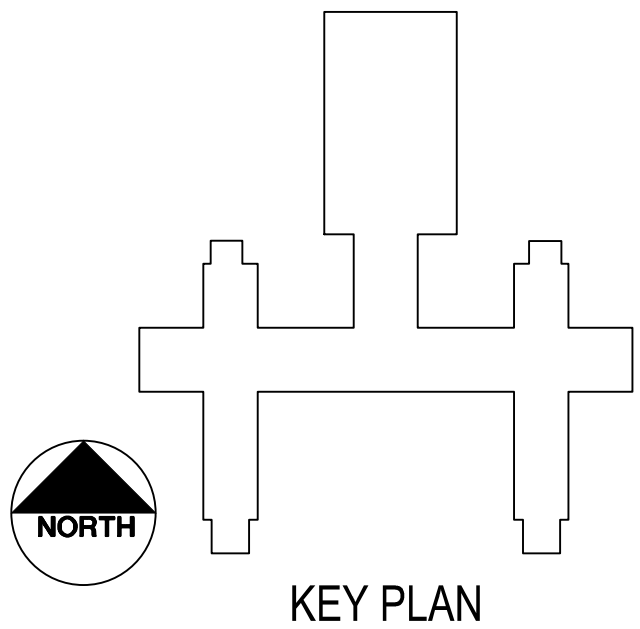


1 BLDG. 11 - 1ST FLR.
SCALE: 1/16" = 1'-0"

NOTICE: DEMOLITION
CONTRACTOR SHALL REMOVE ALL EXISTING LIGHT FIXTURES SHOWN ON DRAWINGS IN DEMOLITION (NON-SHADED) AREAS, UNLESS OTHERWISE NOTED. ALL CIRCUIT WIRING CONNECTED TO LIGHT FIXTURES BEING REMOVED SHALL BE DISCONNECTED, CAPPED, AND LEFT IN SAFE CONDITION FOR LATER RECONNECTION TO RELOCATED AND/OR NEW FIXTURES IN NEW CONSTRUCTION PHASE. THE REMAINING ENDS OF REMOVED WIRING SHALL BE TERMINATED AND CAPPED WITHIN THE NEAREST J-BOX/EQUIPMENT ENCLOSURE.

GENERAL NOTES: (THIS SHEET ONLY)
1. LIGHT FIXTURES MARKED '1' ARE EXISTING AND SHALL BE RELOCATED OR DEMOLISHED AS NOTED. FIXTURES TO BE RELOCATED SHALL BE PROTECTED FROM DAMAGE AND STORED FOR LATER REINSTALLATION. REFER TO ELECTRICAL SYMBOL LEGEND, SHEET G1001.

KEYED NOTES: (THIS SHEET ONLY)
① DEMOLISH EXISTING FLUORESCENT FIXTURES SHOWN ON DRAWING. REMOVE EXISTING EXIT LIGHTS AND STORE FOR LATER REINSTALLATION. CIRCUIT WIRING SHALL REMAIN AND BE RECONNECTED TO NEW LIGHT FIXTURE. REFER TO NEW WORK LIGHTING PLAN SHEETS.
② REMOVE EXISTING LIGHT FIXTURES IN THIS SPACE, BUT ONLY IN AREAS WHERE CEILING IS TO BE TAKEN DOWN AND RELOCATED TO FACILITATE HVAC DUCT WORK. COORDINATE THIS WORK AND REINSTALLATION OF FIXTURES WITH HVAC CONTRACTOR.

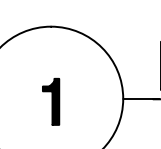


--	--	--	--	--	--	--	--	--	--	--	--	--	--	--	--	--	--	--	--	--	--	--	--	--	--	--	--	--	--	--	--	--	--	--	--	--	--	--	--	--	--	--	--	--	--	--	--	--	--	--	--	--	--	--	--	--	--	--	--	--	--	--	--	--	--	--	--	--	--	--	--	--	--	--	--	--	--	--	--	--	--	--	--	--	--	--	--	--	--	--	--	--	--	--	--	--	--	--	--	--	--	--	--	--	--	--	--	--	--	--	--	--	--	--	--	--	--	--	--	--	--	--	--	--	--	--	--	--	--	--	--	--	--	--	--	--	--	--	--	--	--	--	--	--	--	--	--	--	--	--	--	--	--	--	--	--	--	--	--	--	--	--	--	--	--	--	--	--	--	--	--	--	--	--	--	--	--	--	--	--	--	--	--	--	--	--	--	--	--	--	--	--	--	--	--	--	--	--	--	--	--	--	--	--	--	--	--	--	--	--	--	--	--	--	--	--	--	--	--	--	--	--	--	--	--	--	--	--	--	--	--	--	--	--	--	--	--	--	--	--	--	--	--	--	--	--	--	--	--	--	--	--	--	--	--	--	--	--	--	--	--	--	--	--	--	--	--	--	--	--	--	--	--	--	--	--	--	--	--	--	--	--	--	--	--	--	--	--	--	--	--	--	--	--	--	--	--	--	--	--	--	--	--	--	--	--	--	--	--	--	--	--	--	--	--	--	--	--	--	--	--	--	--	--	--	--	--	--	--	--	--	--	--	--	--	--	--	--	--	--	--	--	--	--	--	--	--	--	--	--	--	--	--	--	--	--	--	--	--	--	--	--	--	--	--	--	--	--	--	--	--	--	--	--	--	--	--	--	--	--	--	--	--	--	--	--	--	--	--	--	--	--	--	--	--	--	--	--	--	--	--	--	--	--	--	--	--	--	--	--	--	--	--	--	--	--	--	--	--	--	--	--	--	--	--	--	--	--	--	--	--	--	--	--	--	--	--	--	--	--	--	--	--	--	--	--	--	--	--	--	--	--	--	--	--	--	--	--	--	--	--	--	--	--	--	--	--	--	--	--	--	--	--	--	--	--	--	--	--	--	--	--	--	--	--	--	--	--	--	--	--	--	--	--	--	--	--	--	--	--	--	--	--	--	--	--	--	--	--	--	--	--	--	--	--	--	--	--	--	--	--	--	--	--	--	--	--	--	--	--	--	--	--	--	--	--	--	--	--	--	--	--	--	--	--	--	--	--	--	--	--	--	--	--	--	--	--	--	--	--	--	--	--	--	--	--	--	--	--	--	--	--	--	--	--	--	--	--	--	--	--	--	--	--	--	--	--	--	--	--	--	--	--	--	--	--	--	--	--	--	--	--	--	--	--	--	--	--	--	--	--	--	--	--	--	--	--	--	--	--	--	--	--	--	--	--	--	--	--	--	--	--	--	--	--	--	--	--	--	--	--	--	--	--	--	--	--	--	--	--	--	--	--	--	--	--	--	--	--	--	--	--	--	--	--	--	--	--	--	--	--	--	--	--	--	--	--	--	--	--	--	--	--	--	--	--	--	--	--	--	--	--	--	--	--	--	--	--	--	--	--	--	--	--	--	--	--	--	--	--	--	--	--	--	--	--	--	--	--	--	--	--	--	--	--	--	--	--	--	--	--	--	--	--	--	--	--	--	--	--	--	--	--	--	--	--	--	--	--	--	--	--	--	--	--	--	--	--	--	--	--	--	--	--	--	--	--	--	--	--	--	--	--	--	--	--	--	--	--	--	--	--	--	--	--	--	--	--	--	--	--	--	--	--	--	--	--	--	--	--	--	--	--	--	--	--	--	--	--	--	--	--	--	--	--	--	--	--	--	--	--	--	--	--	--	--	--	--	--	--	--	--	--	--	--	--	--	--	--	--	--	--	--	--	--	--	--	--	--	--	--	--	--	--	--	--	--	--	--	--	--	--	--	--	--	--	--	--	--	--	--	--	--	--	--	--	--	--	--	--	--	--	--	--	--	--	--	--	--	--	--	--	--	--	--	--	--	--	--	--	--	--	--	--	--	--	--	--	--	--	--	--	--	--	--	--	--	--	--	--	--	--	--	--	--	--	--	--	--	--	--	--	--	--	--	--	--	--	--	--	--	--	--	--	--	--	--	--	--	--	--	--	--	--	--	--	--	--	--	--	--	--	--	--	--	--	--	--	--	--	--	--	--	--	--	--	--	--	--	--	--	--	--	--	--	--	--	--	--	--	--	--	--	--	--	--	--	--	--	--	--	--	--	--	--	--	--	--	--	--	--	--	--	--	--	--	--	--	--	--	--	--	--	--	--	--	--	--	--	--	--	--	--	--	--	--	--	--	--	--	--	--	--	--	--	--	--	--	--	--	--	--	--	--	--	--	--	--	--	--	--	--	--	--	--	--	--	--	--	--	--	--	--	--	--	--	--	--	--	--	--	--	--	--	--	--	--	--	--	--	--	--	--	--	--	--	--	--	--	--	--	--	--	--	--	--	--	--	--	--	--	--	--	--	--	--	--	--	--	--	--	--	--	--	--	--	--	--	--	--	--	--	--	--	--	--	--	--	--	--	--	--	--	--	--	--	--	--	--	--	--	--	--	--	--	--	--	--	--	--	--	--	--	--	--	--	--	--	--	--	--	--	--	--	--	--	--	--	--	--	--	--	--	--	--	--	--	--	--	--	--	--	--	--	--	--	--	--	--	--	--	--	--	--	--	--	--	--	--	--	--	--	--	--	--	--	--	--	--	--	--	--	--	--	--	--	--	--	--	--	--	--	--	--	--	--	--	--	--	--	--	--	--	--	--	--	--	--	--	--	--	--	--	--	--	--	--	--	--	--	--	--	--	--	--	--	--	--	--	--	--	--	--	--	--	--	--	--	--	--	--	--	--	--	--	--	--	--	--	--	--	--	--	--	--	--	--	--	--	--	--	--	--	--	--	--	--	--	--	--	--	--	--	--	--	--	--	--	--	--	--	--	--	--	--	--	--	--	--	--	--	--	--	--	--	--	--	--	--

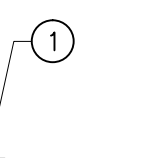
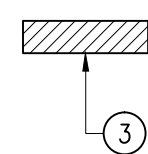
CONTRACTOR SHALL REMOVE ALL EXISTING LIGHT FIXTURES SHOWN ON DRAWINGS IN DEMOLITION (NON-SHADE) AREAS, UNLESS OTHERWISE NOTED. ALL CIRCUIT WIRING CONNECTS TO LIGHT FIXTURES BEING REMOVE SHALL BE DISCONNECTED, CAPPED, AND LEFT IN SAFE CONDITION FOR LATER RECONNECTION TO RELOCATE AND/OR NEW FIXTURES IN NEW CONSTRUCTION PHASE. THE REMAINING ENDS OF REMOVE WIRING SHALL BE TERMINATE AND CAPPED WITHIN THE NEAREST J-BOX/EQUIPMENT ENCLOSURE.

1. LIGHT FIXTURES MARKE 'E' ARE EXISTING AND SHALL BE RELOCATE OR DEMOLISHE AS NOTE. FIXTURES TO BE RELOCATE SHALL BE PROTECTE FROM DAMAGE AND STORE FOR LATER REINSTALLATION. REFER TO ELECTRICAL SYMBOL LEGEND, SHEET G1001

- 1 DEMOLISH EXISTING FLUORESCENT FIXTURES SHOWN ON DRAWING. REMOVE EXISTING EXIT LIGHTS AND STORE FOR LATER REINSTALLATION. CIRCUIT WIRING SHALL REMAIN AND BE RECONNECTED TO NEW LIGHT FIXTURE. REFER TO NEW WORK LIGHTING PLAN SHEETS.
- 2 REMOVE EXISTING LIGHT FIXTURES IN THIS SPACE, BUT ONLY IN AREAS WHERE CEILING IS TO BE TAKEN DOWN AND RELOCATE TO FACILITATE HVAC DUCT WORK. COORDINATE THIS WORK AND REINSTALLATION OF FIXTURES WITH HVAC CONTRACTOR.



SCALE: 1/16" = 1'-0"



HOLE AND DAMAGED AREAS CAUSED BY REMOVAL OF ANY OF THE ABOVE ITEMS AND WHICH ARE NOT CONCEALED BY NEW CONSTRUCTION SHALL BE REPAIRED TO MATCH EXISTING SURFACES. IN ADDITION, THE CONTRACTOR SHALL PROVIDE THE FOLLOWING ITEMS THROUGH FIRE RESISTANCE RATED WALLS SHALL BE FIRE STOPPED.

WHERE CONDUIT AND CONDUCTORS ARE INDICATED TO BE REMOVED, CONDUIT SHALL BE REMOVED TO POINT OF CONCEALMENT AND WIRING REMOVED ENTIRELY. PROVIDE BACK COVERPLATES WHERE REQUIRED.

BACK COVERPLATES AND ALL UNUSED OPENINGS IN BOXES, RACKS, AUXILIARY GUTTERS, CABINETS, EQUIPMENT CASES AND HOUSINGS SHALL BE CLOSED TO AFFORD PROTECTION SUBSTANTIALLY EQUIVALENT TO THE WALLS OF THE EQUIPMENT (REFER TO NEC).

IF A CONDUIT RUN IS EXPOSED OR A SURFACE RACEWAY LEFT EXPOSED, THE EXPOSURE SURFACES SHALL BE TO THE REMOVAL OF A PARTITION, THE CONDUIT SHALL BE REROUTED AS ACCEPTABLE TO THE OWNER/ARCHITECT.

ALL ELECTRICAL EQUIPMENT, OUTLETS AND/OR DEVICES THAT ARE TO BE REMOVED SHALL BE REMOVED WHEN REMOVED SHALL BE REPAIRED, RESTORED OR NEW ONES PURCHASED TO THE APPROVAL OF THE OWNER. THE CONTRACTOR SHALL NOTIFY THE ARCHITECT/ENGINEER/OWNER OF THE LOCATION OF EQUIPMENT, OUTLETS AND/OR DEVICES WHICH ARE INDICATED AS REQUIRED TO BE REMOVED TO BE UNSERVICEABLE.

ALL EXISTING FIRE ALARM DEVICES, CONDUIT AND WIRING ASSOCIATED WITH EQUIPMENT, SCHEDULED FOR DEMOLITION, SHALL BE REMOVED WITH THEIR ENTIRETY. INSTALL NEW CONDUCTORS AND DEVICES AS PER THE ELECTRICAL CODE AND THE REQUIREMENTS OF THE SYSTEM.

- ① EXISTING DISCONNECT SWITCH, WIRING, AND CONDUIT TO BE REMOVED IN ITS ENTIRETY.
THE CORRIDOR NEXT TO MAIN KITCHEN.
- ② EXISTING DUCT-MOUNTED SMOKE DETECTORS, WIRING, AND ASSOCIATED CONDUIT TO BE REMOVED IN ITS ENTIRETY.
- ③ APPROXIMATE LOCATION OF EXISTING ELECTRICAL PANEL "3X12A" LOCATED ON THE THIRD LEVEL IN CORRIDOR NEXT TO MAIN KITCHEN. THIS PANEL IS EXISTING TO REMAIN.



1 BLDG. 11 - 4TH FLR. (ANNEX)
MECHANICAL ROOMS
SCALE: 1/4" = 1'-0"



KEY PLAN

Office of
Construction
and Facilities
Management

