

# ENGINEERING

MANUFACTURED BY

**AMERI-CAN**  
ENGINEERING

DATE: DECEMBER 11, 2008

15886 N. MICHIGAN • ARGOS, IN 46501 • USA

GVWR 5,386 KG (11,850 LB) This design is protected by U.S. COPYRIGHT LAW 2008

	GAWR		TIRES	RIMS	COLD INFLATION PRESSURE			
FRONT	3,129 KG (6,900 LB)		LT235/85R x 16IN x WRLR	16 INCH 8 BOLT	550 KPA (80 PSI)	SINGLE <input checked="" type="checkbox"/>	DUAL <input type="checkbox"/>	
REAR	3,129 KG (6,900 LB)		LT235/85R x 16IN x WRLR	16 INCH 8 BOLT	550 KPA (80 PSI)	SINGLE <input checked="" type="checkbox"/>	DUAL <input type="checkbox"/>	

THIS VEHICLE CONFORMS TO ALL APPLICABLE U.S. FEDERAL MOTOR VEHICLE SAFETY STANDARDS IN EFFECT ON THE DATE OF MANUFACTURE SHOWN ABOVE.

VIN 1A9500R2481270 093

TYPE 828 Traditional with ADA Lift Removals





### 828 Traditional with ADA Lift Room

#### Trailer Specifications // Standard Equipment

Unibody Steel Frame 8' x 28'  
Five Year Warranty Steel Frame  
Goodyear Tires LT 235 x 85R16  
High Efficiency Ducted A/C  
FiberCorr Interior Walls - White  
Door Trim Package  
Electric Brakes  
Wired for Optional Baseboard Heat  
Load Levelers 5,000 lb (4)  
2 5/16" Adjustable Hitch  
3/4" Marine Plywood T/G Floor  
Truss Rafters 16" O/C  
Seamless Aluminum Roof  
Five Horizontal Belt Rails  
Locks Keyed Alike  
Waste Tank Sight Glass  
3" Cam Lock Waste Valve  
34" Commercial Doors (36" for ADA)  
Aluminum Exterior - Customer Choice of Color  
Porch Assemblies Available  
Step Assemblies with Handrails

Dual 6,900 lb Dexter TorFlex Axles  
Five Year Warranty TorFlex Axles  
Waste Tank 875 gallons  
Entrance / Exit Doors (3)  
Vinyl Flooring - Galaxy  
Frame Undercoating  
Sure Lube Hubs  
FiberCorr Smooth Finish Ceiling  
DOT Safety and Light Package  
Electric Break-a-Way System  
Floor Joist 2" x 2" Steel 16" O/C  
All Walls and Ceiling Insulated  
Recessed Night Lights for Doors  
Rain Gutters over each Door  
Aluminum Kick Plates  
1/4" Fresh Water Connection  
Lockable Thermostat  
20 Amp Electrical Circuits  
LED Exterior Lights  
Fold-in-Door ADA Ramp

#### Women's Accommodations

China Flushing Water Saver Toilets - White (4)  
Steel Partition Doors with Transport Locks  
Lockable Vanities with Solid Surface Sink Tops - White (2)  
Wall Recessed Towel Dispenser and Waste Receptacles  
Stainless Sanitary Receptacles (4)

Fluorescent Lighting  
Extra Large Partitions - Graphite  
Delta Water Saver Faucets  
Safety Glass Mirrors  
Chrome Floor Drain

#### Men's Accommodations

China Flushing Water Saver Toilets - White (2)  
Lockable Vanity with Solid Surface Sink Top - White  
Wall Recessed Towel Dispenser and Waste Receptacle  
China Flushing Water Saver Urinals - White (3)  
Steel Partition Doors with Transport Locks  
Chrome Floor Drain

Safety Glass Mirror  
Delta Water Saver Faucet  
Fluorescent Lighting  
Urinal Dividers - Graphite  
Extra Large Partition - Graphite

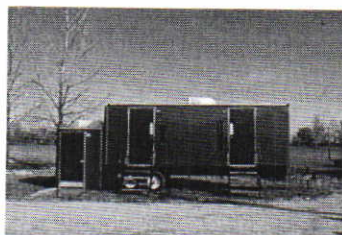
#### Hydraulic ADA Compartment

ADA China Flushing Water Saver Toilet  
Delta Water Saver Faucet  
Wall Recessed Towel Dispenser and Waste Receptacle  
Stainless Sanitary Receptacle  
ADA Door Handle & Locking System

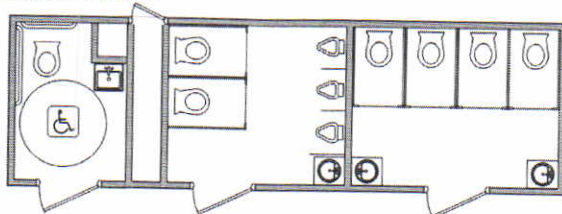
Chrome Floor Drain  
ADA Sink  
ADA Wall Rails  
ADA Door Closure  
Safety Glass Mirror

#### Traditional Series

Attractive, rugged, highly functional commercial grade restrooms trailers. Designed for cost effective heavy duty use. 18 floor plans and a choice of color combinations.



828 Traditional with ADA Lift Room



Drawing not to scale.



### Available Options

Hot Water System	
Heat Package (interior heaters only)	
Cold Weather Package (includes the heat package)	
Arctic Weather Package (for more extreme temperatures)	
Baby Change Station	
Trailer Skirts - Canvas	
Spare Tire - 16"	
Fresh Water System (adds 3 feet to trailer) Tank Size = 300 gallons / Waste tank size becomes 1,000 gallons	
Multi Source Sound System	
Upgrade to Electric Hands Free Delta Faucets (price per faucet)	
Upgrade to Rubberized Flooring	
Upgrade to Fold Up Porch Steps (price per door)	
Upgrade to Roll Out Porch Steps (price per door)	

**Since 1988 America's Premier Specialty Trailer Manufacturer**