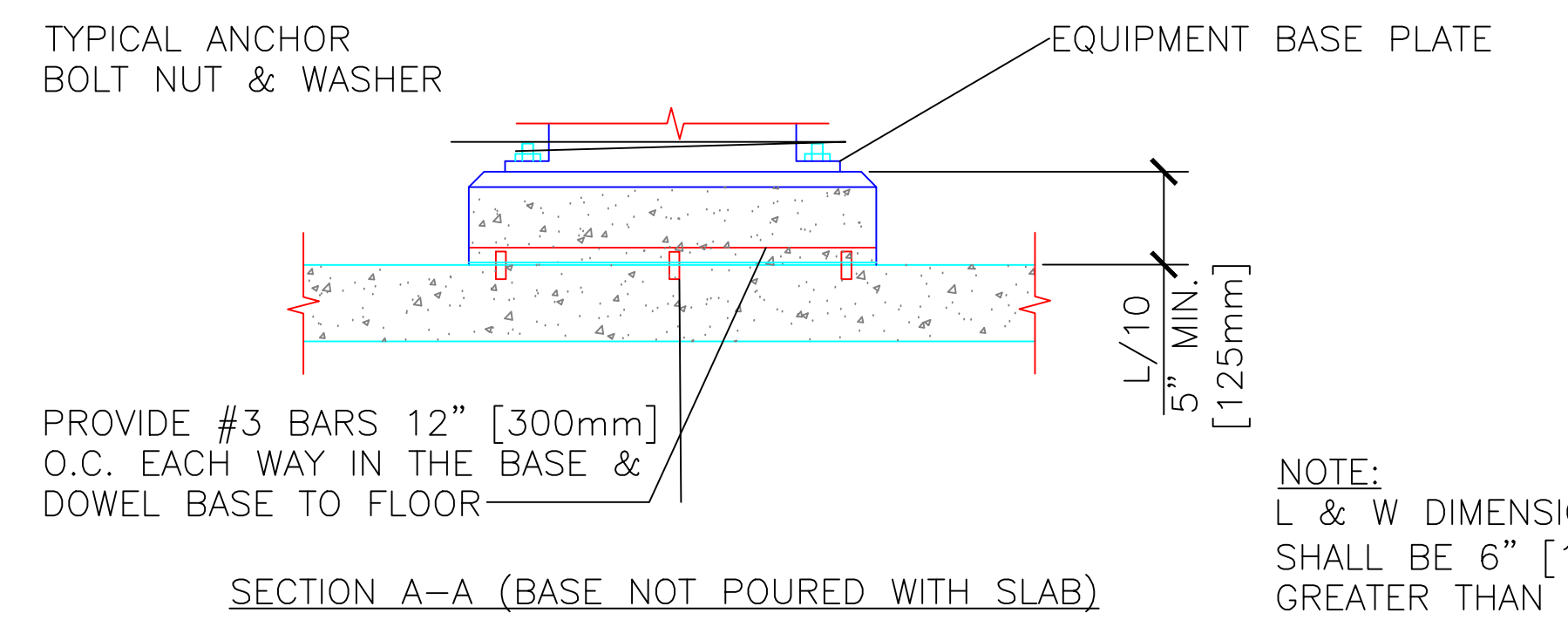
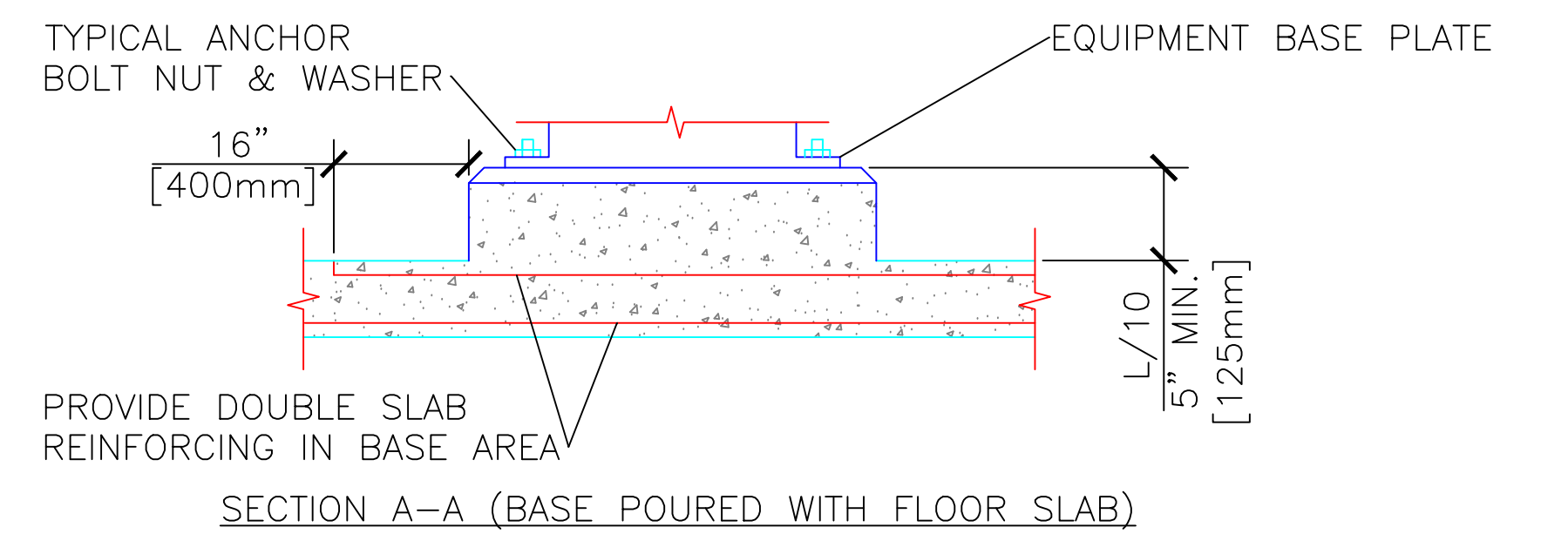
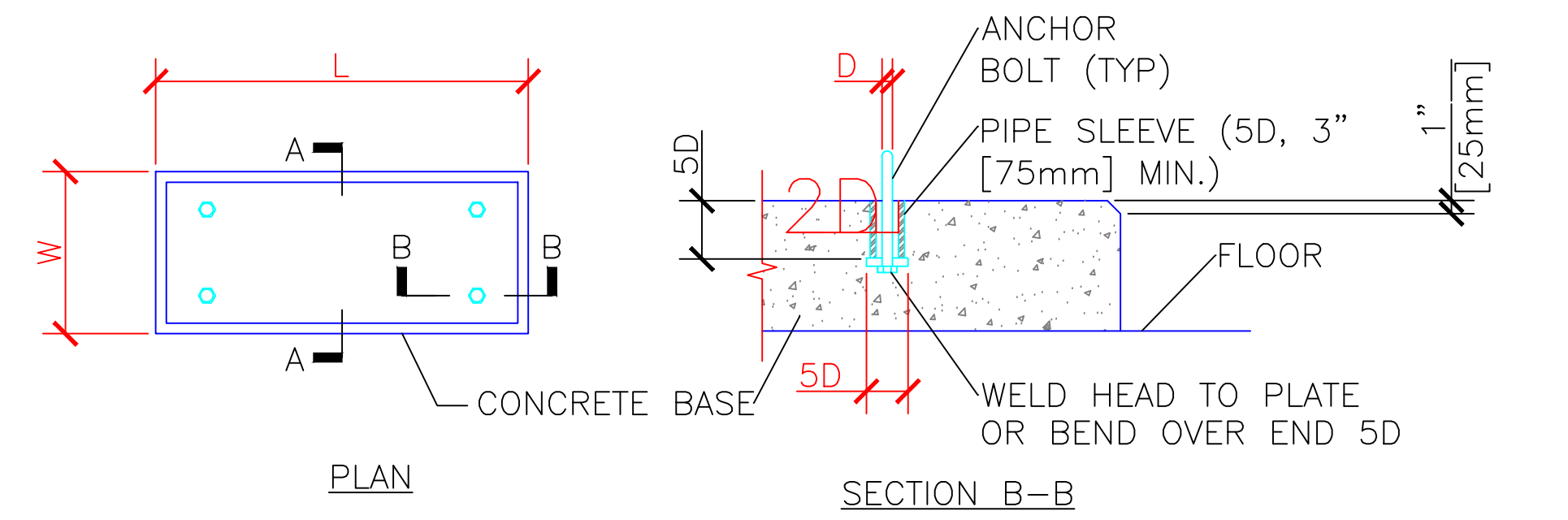


NTS



NOTE:
L & W DIMENSIONS
SHALL BE 6" [150mm]
GREATER THAN THE
EQUIPMENT BASE PLATE.

2

NTS

NOTE:
CONTRACTOR TO CORE DRILL MIN 6" CORE THROUGH
CONCRETE SLAB.
CONTRACTOR REQUIRED TO RUN 115VOLTS FOR WATER SOFTNER
SOFTNER SHALL HAVE WATER SUPPLY, DISCHARGE FROM SOFTNER
WITH BLOCKING ISOLATION VALVE BETWEEN SUPPLY AND DISCHARGE
CONCRETE PAD SHALL BE MIN 5" THICK.
CURRENT CONDITION IS THERE IS EPOXY FLOOR WHICH THE CONTRACTOR
WILL HAVE TO MANAGE WITH CASTING THE CONCRETE PAD.
A PRE-FAB CONCRETE PAD CAN BE USED, BUT MUST BE APPROVE THROUGH
SUBMITTAL PROCESS.
BOTH SOLUTION THE EPOXY FLOOR MUST BE PROTECTED.

RECOMMEND APPROVAL			
REQUESTER	Date		
CHIEF OF SERVICE	Date	CHIEF OF STAFF	Date
ASSOC. DIR. PATIENT CARE SVC.	Date	ASSOC. DIR. for OPERATIONS	Date
APPROVAL BY:			Date
MEDICAL CENTER DIRECTOR			

Drawing Title
STRUCTURE DETAILS
Approved: Safety Manager/M&O Supervisor
Approved: Chief of Facilities Management Svr.

Project Title		
REPLACE REFRACTORY ON BOILER #3		
Building Number	Checked	Drawn
BUILDING # 18		BLF
Location	W.G.(Bill) Hefner Medical Center 1601 Brenner Ave. Salisbury NC 28144	



Veterans Affairs