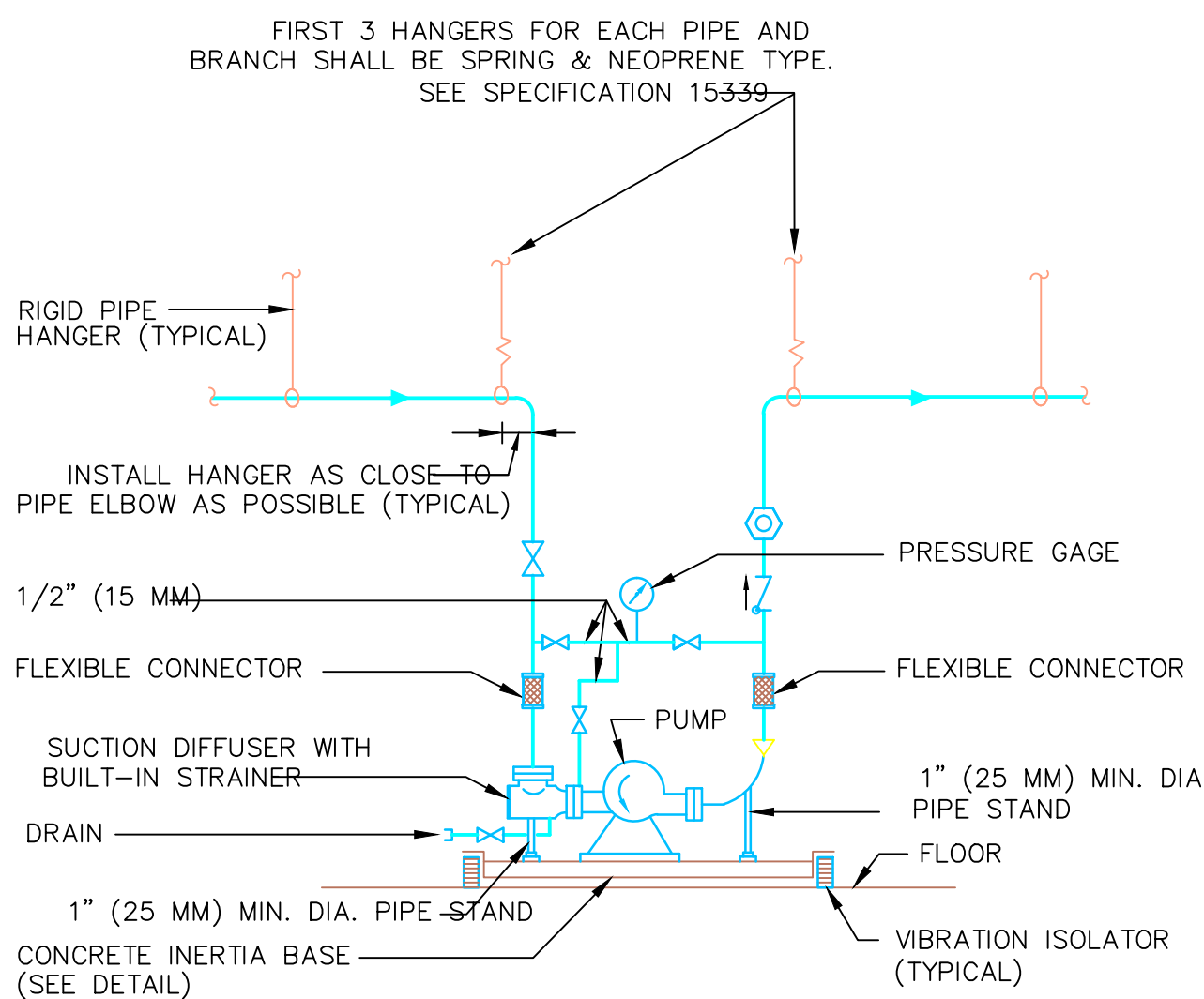


TYPICAL PIPE HANGERS
NOT TO SCALE

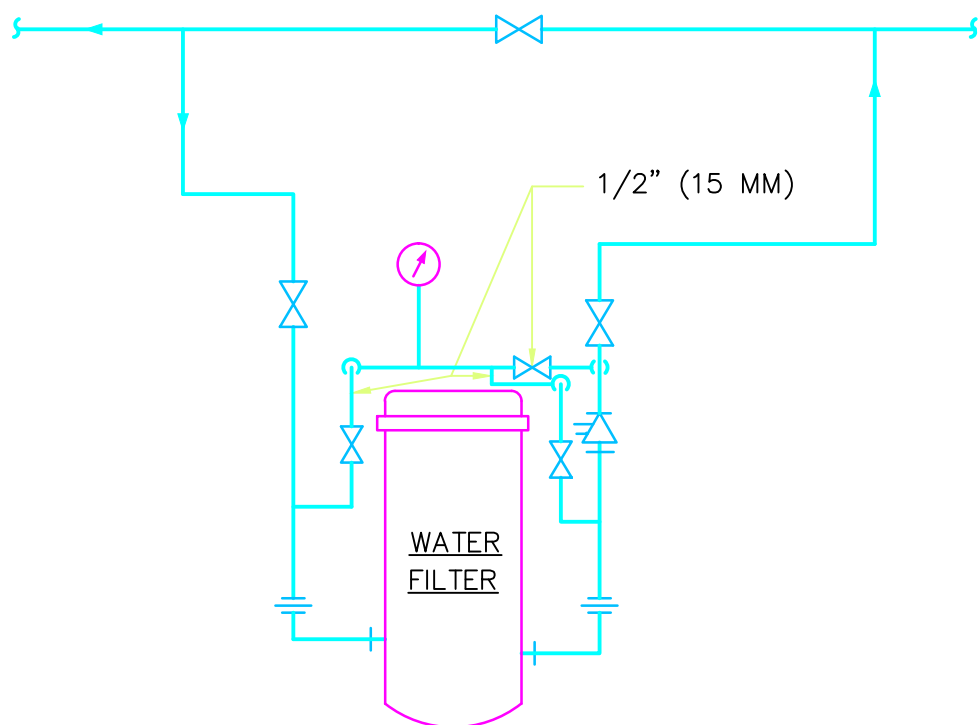
MAXIMUM PIPE/TUBING SUPPORT SPACING																				
NOM. SIZE	N. (MM)	THRU 3/4 (20)	1 (25)	1 1/4 (32)	1 1/2 (40)	2 (50)	2 1/2 (65)	3 (75)	4 (100)	5 (125)	6 (150)	8 (200)	10 (250)	12 (300)	14 (350)	16 (400)	18 (450)	20 (500)	24 (600)	
PIPE	FT (M)	7 (2.1)	7 (2.1)	7 (2.1)	7 (2.7)	9 (3.0)	11 (3.4)	12 (3.7)	14 (4.1)	16 (4.9)	17 (5.2)	19 (5.8)	22 (6.7)	23 (7.0)	25 (7.6)	27 (8.2)	28 (8.5)	30 (9.1)	32 (9.6)	
TUBING	FT (M)	5 FT (1.5)	6 (1.8)	7 (2.1)	7 (2.4)	8 (2.4)	9 (2.7)	10 (3.0)	12 (3.7)	13 (4.0)	14 (4.1)	16 (4.9)	—	—	—	—	—	—	—	
NOTE: FOR TRAPEZE HANGER TAKE SPACING OF SMALLEST SIZE ON TRAPEZE.																				

NOTE: FOR TRAPEZE HANGER TAKE SPACING OF SMALLEST SIZE ON TRAPEZE.



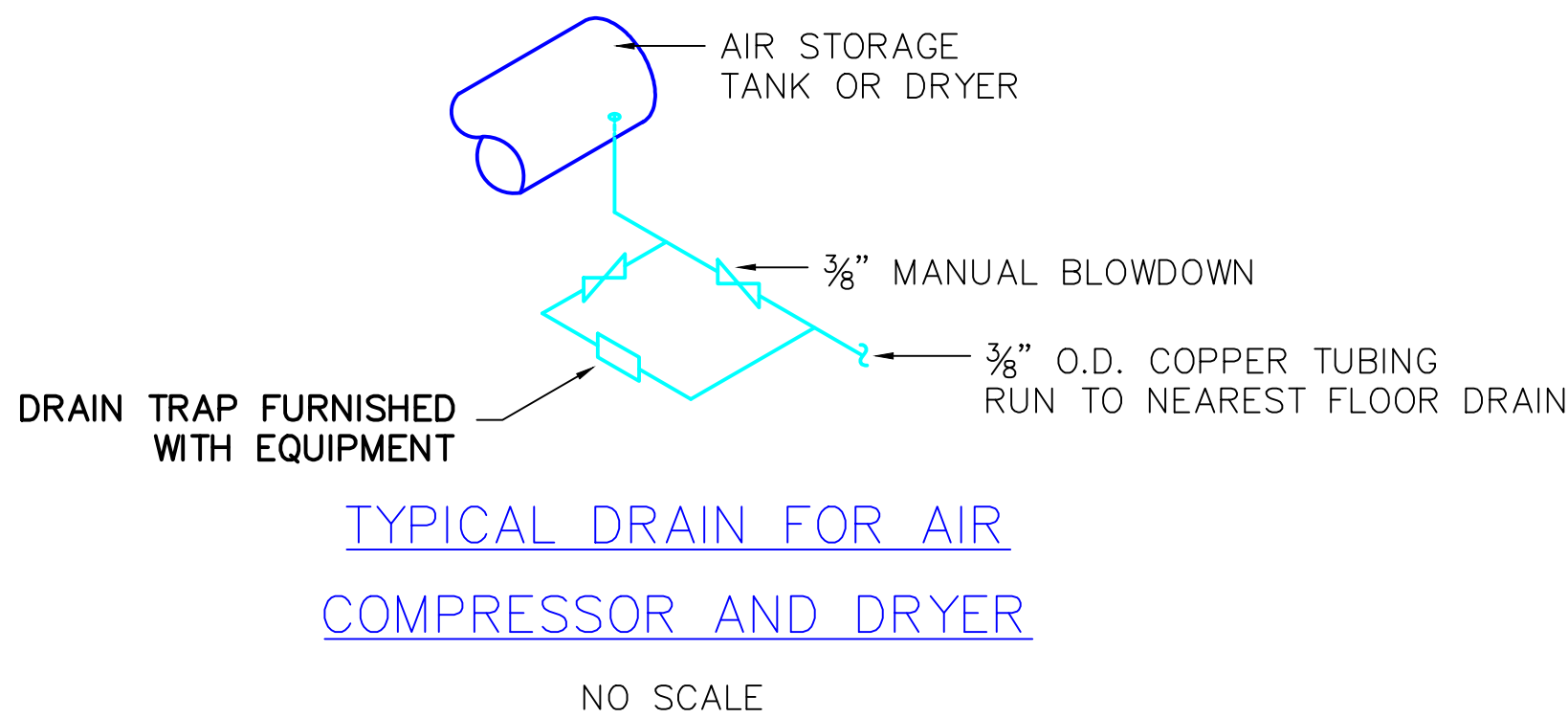
TYPICAL PIPING CONNECTIONS TO FLOOR MOUNTED DOUBLE SUCTION WATER PUMPS

NOTE:
SEE SPECIFICATION SECTION "PUMPS" FOR Y STRAINER OPTION.

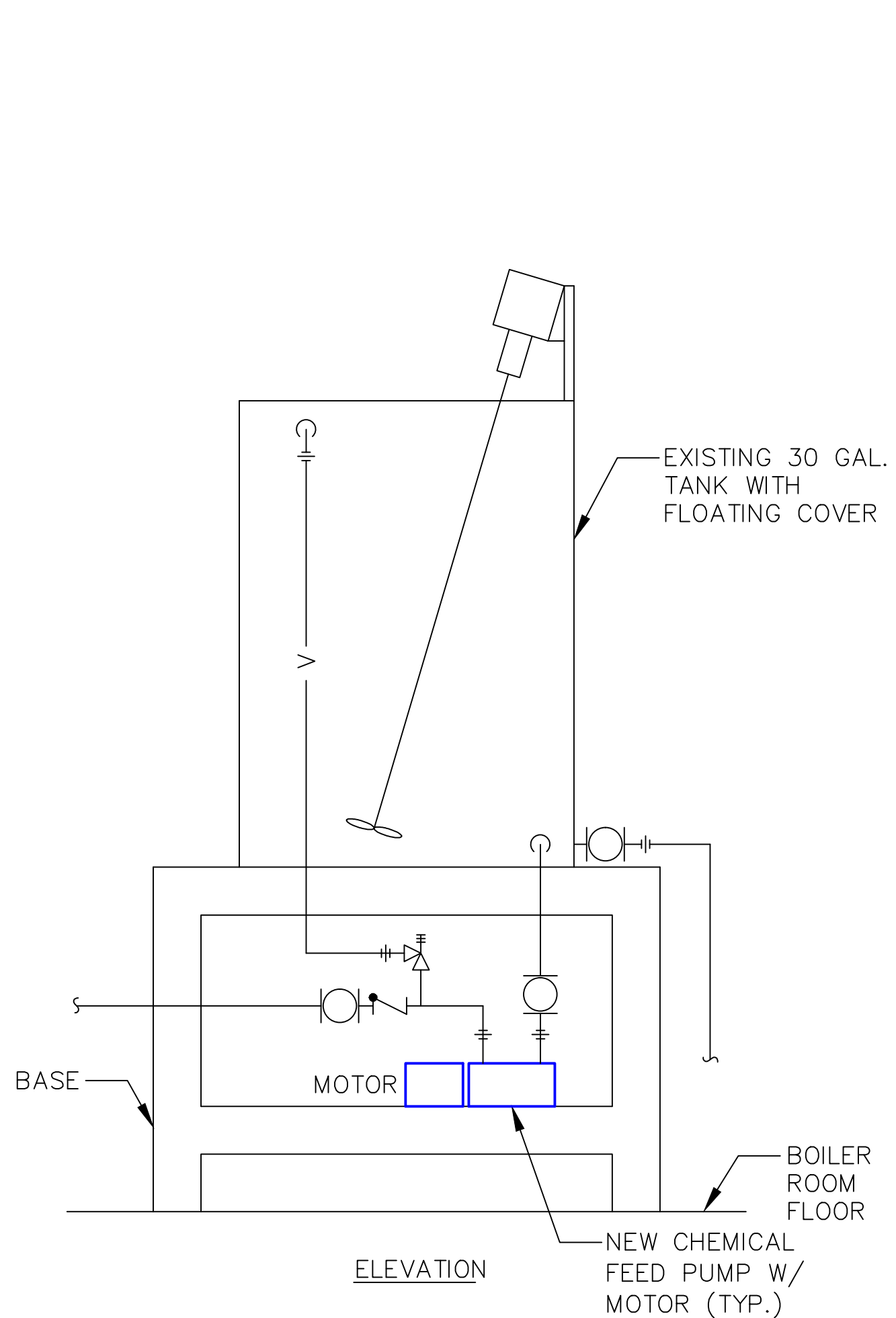


TYPICAL CONNECTIONS TO WATER FILTER

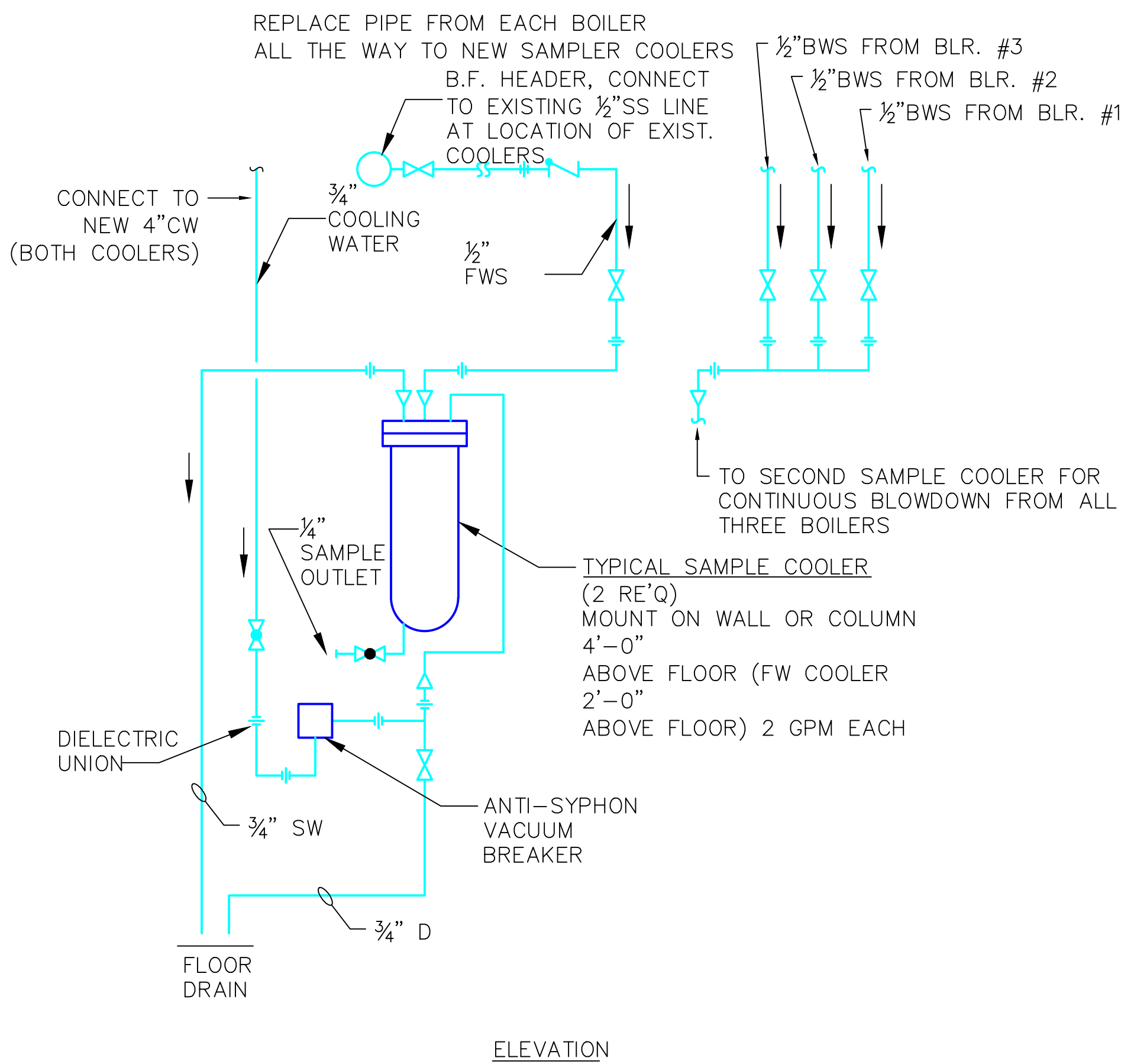
NOTE:
1. PROVIDE ROOM FOR INSULATING FILTER AND PIPING.



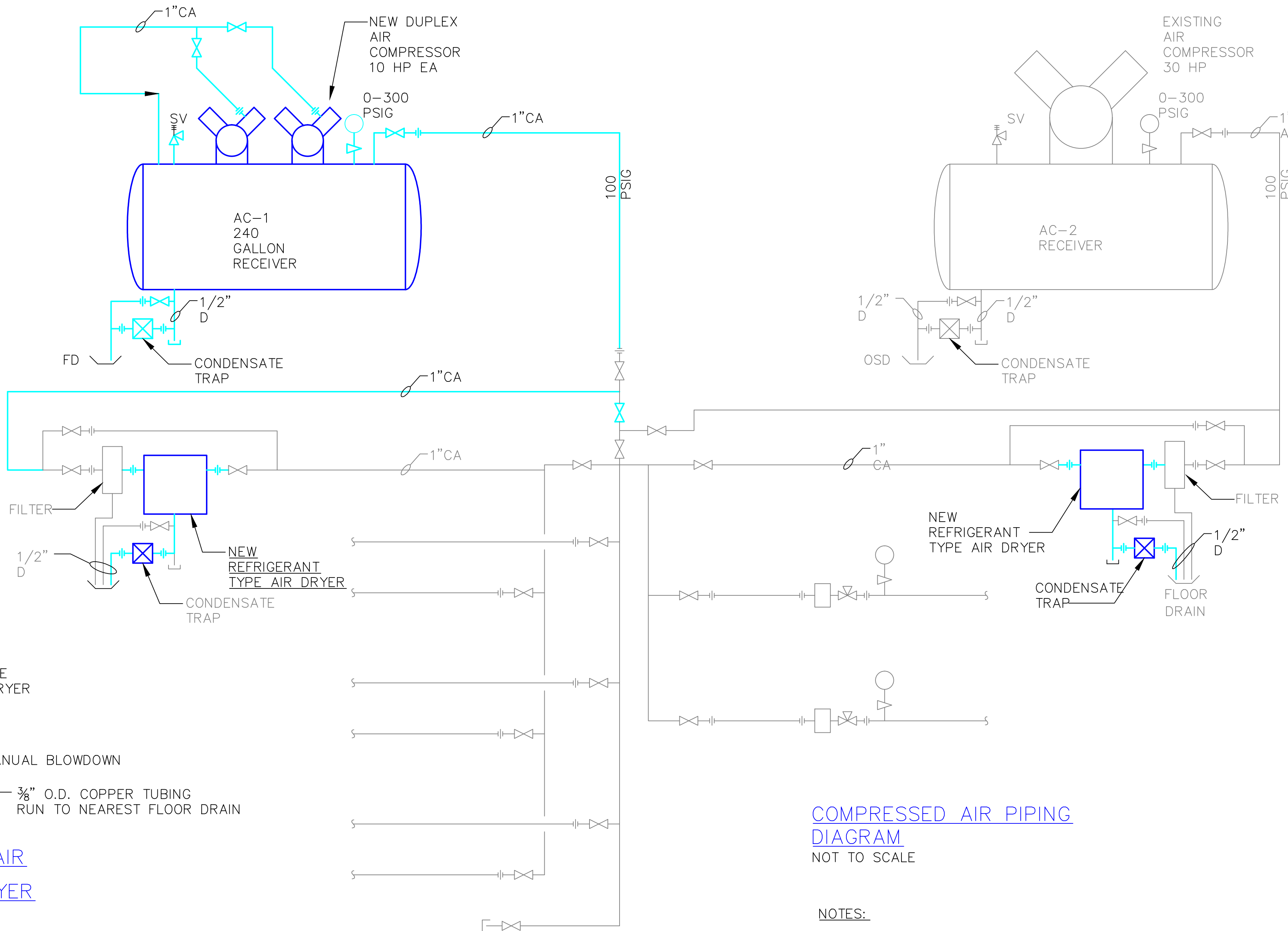
TYPICAL DRAIN FOR AIR COMPRESSOR AND DRYER



CHEMICAL FEED SYSTEM
NOT TO SCALE

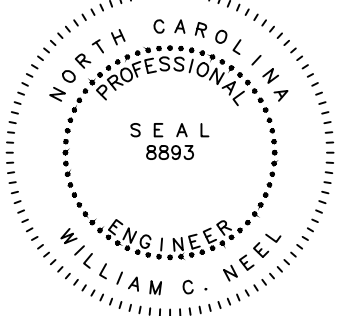


WATER SAMPLE COOLERS
NOT TO SCALE



NOTES:
1. SEE DRAWING H-1 FOR LEGEND.

ISSUED FOR AS BUILTS	04-11-05
Revision	Date



CAN Engineering, Inc.
4109 East North St., Suite 200
Greenville, South Carolina 29615
Ph: (864) 271-3873
Fax: (864) 268-7570
Email: CANENGINE@aol.com
CAN Project No. 2001603

RECOMMEND APPROVAL				Drawing Title	Project Title	Date
REQUESTOR	Date	CHIEF OF STAFF	Date	DETAILS AND PIPING DIAGRAMS BOILER UPGRADE BUILDING # 18	BOILER UPGRADE VETERANS' AFFAIRS MEDICAL CENTER SALISBURY, NORTH CAROLINA	01-06-03
CHIEF OF SERVICE	Date	ASST. DIR. FOR OPERATIONS	Date	Approved: Safety Manager/M&O Supervisor	Building Number 18	Project No. 659-03-101
APPROVAL BY:	Date			Approved: Chief Facilities Management Service Line	Checked WCN	DRAWING NO. H-8
MEDICAL CENTER DIRECTOR					Drawn LSH	DWG. 10 OF 14
					Location Dept. of Veterans Affairs 1501 Brenner Ave. Salisbury NC 28144	

