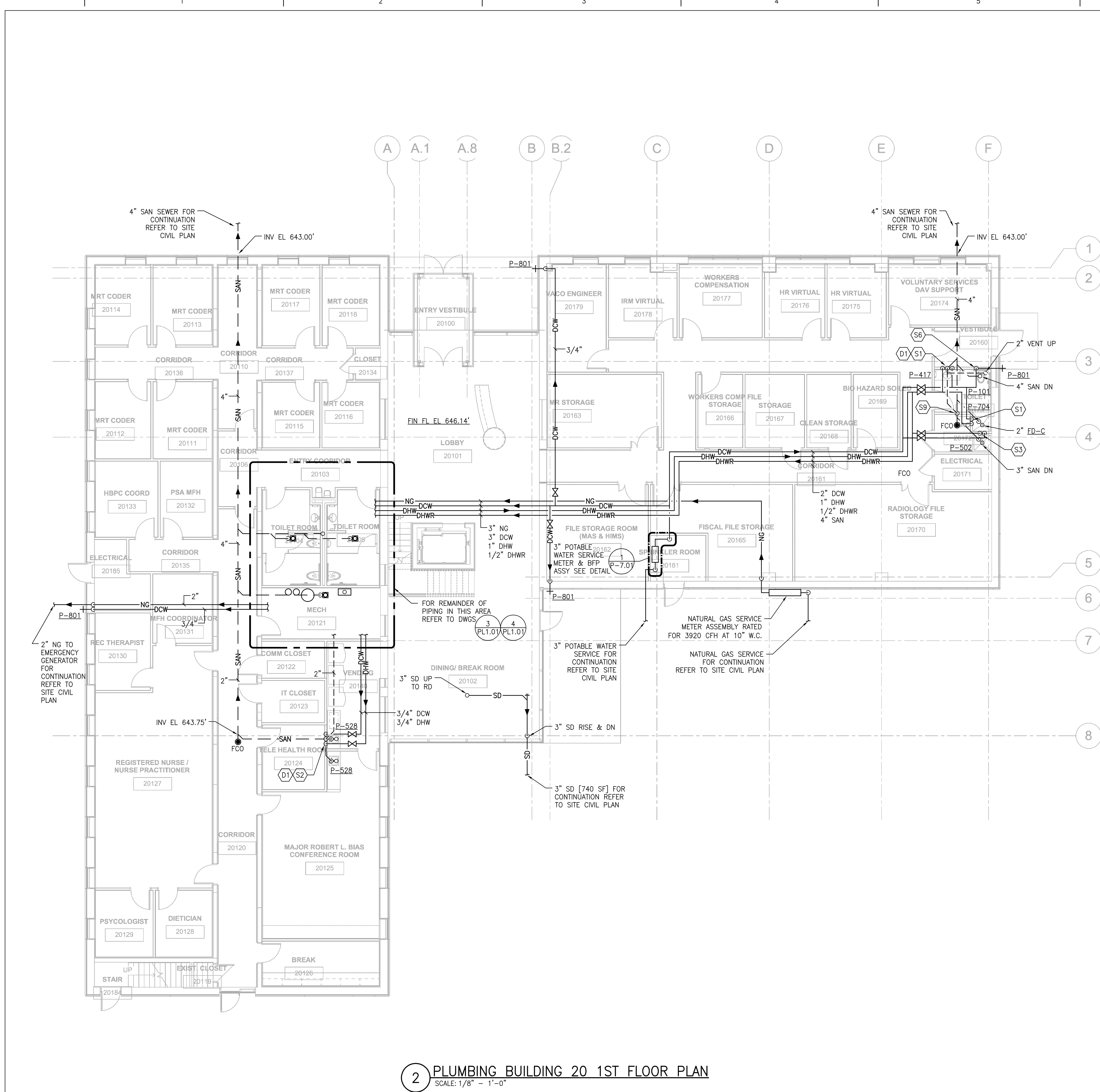
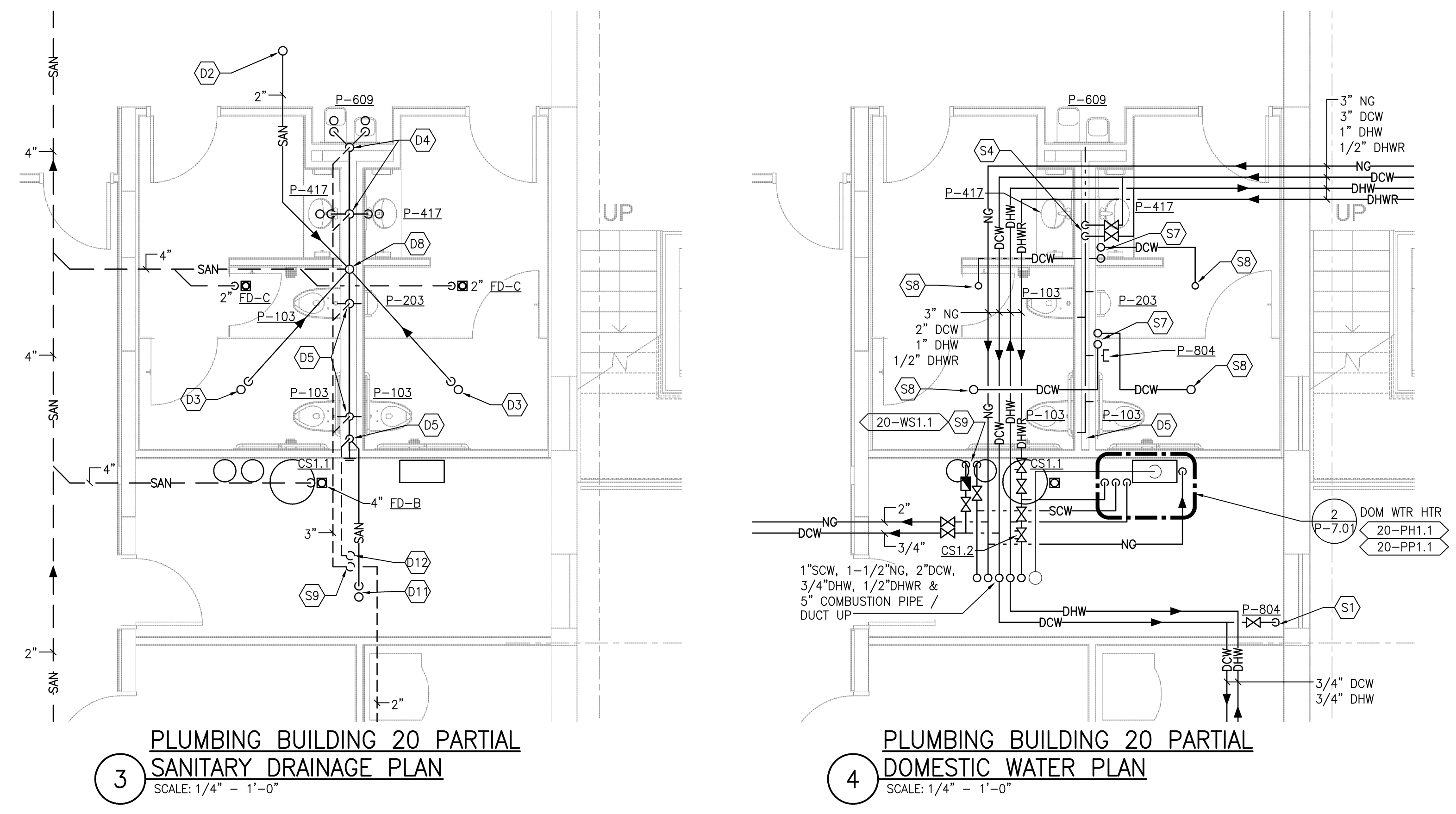




three eighths inch = one foot  
one half inch = one foot  
one quarter inch = one foot  
one eighth inch = one foot

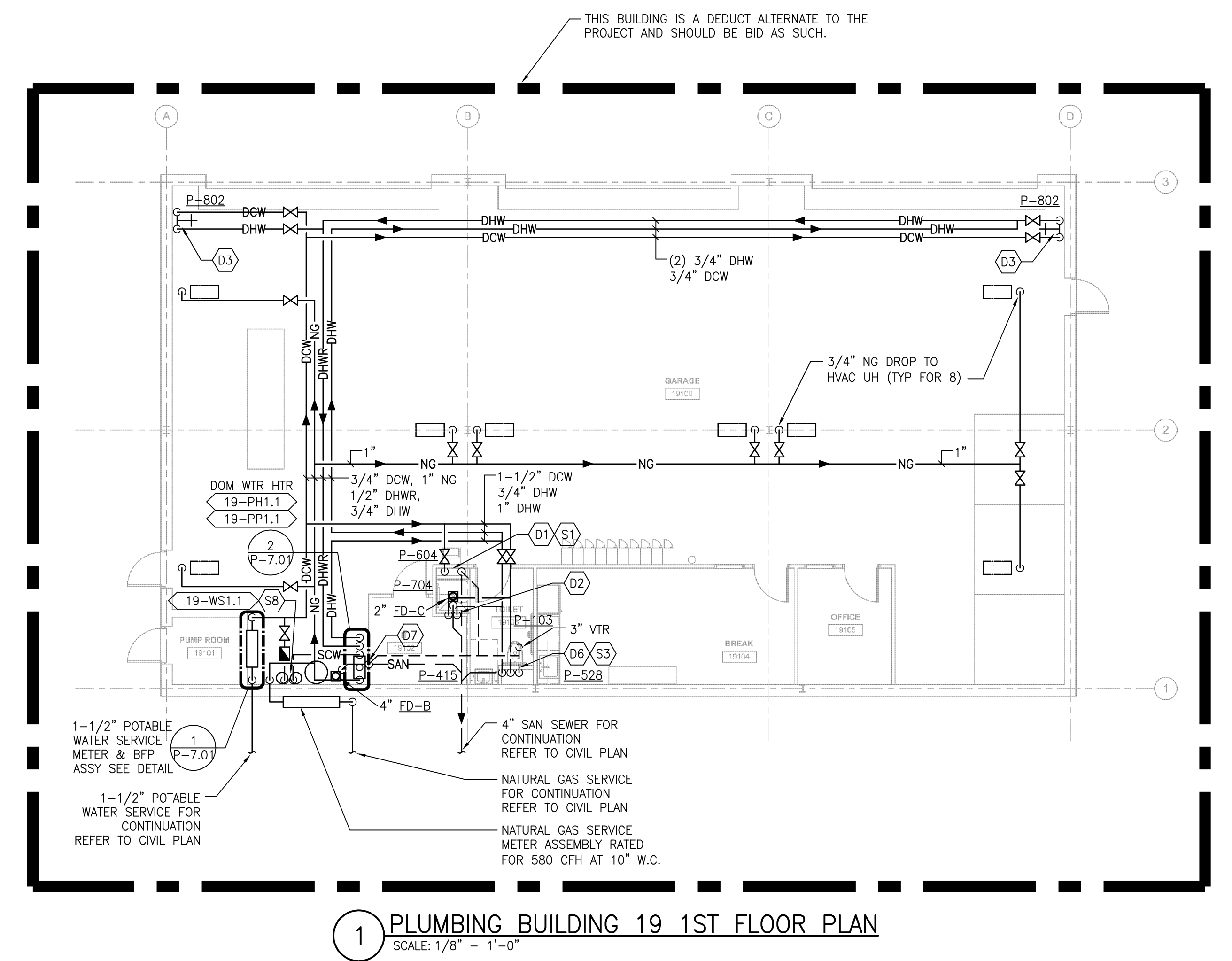


2 PLUMBING BUILDING 20 1ST FLOOR PLAN  
SCALE: 1/8" = 1'-0"



3 PLUMBING BUILDING 20 PARTIAL  
SANITARY DRAINAGE PLAN  
SCALE: 1/4" = 1'-0"

4 PLUMBING BUILDING 20 PARTIAL  
DOMESTIC WATER PLAN  
SCALE: 1/4" = 1'-0"



1 PLUMBING BUILDING 19 1ST FLOOR PLAN  
SCALE: 1/8" = 1'-0"

SHEET KEYNOTES:

- |                                       |                       |                               |  |
|---------------------------------------|-----------------------|-------------------------------|--|
| D1 2" SAN DN & 2" VENT RISE           | D7 2" VENT RISE & DN  | S1 1/2" DCW DROP              | S7 (2) 1/2" DCW UP TO TP-2, REFER TO DETAIL 9/PL7.01 |
| D2 2" SAN UP                          | D8 4" SAN UP & DN     | S2 1/2" DCW & 1/2" DHW DROP   | S8 1/2" DCW TO FD TRAP FROM TP-2                     |
| D3 2" SAN UP TO FD                    | D9 3" VENT UP         | S3 3/4" DCW & 3/4" DHW DROP   | S9 1" DCW & 1" SCW DROP TO WATER SOFTENER            |
| D4 1-1/2" SAN DROP & 1-1/2" VENT RISE | D10 2" VENT RISE & DN | S4 1-1/2" DCW & 1/2" DHW DROP |  |
| D5 4" SAN DROP & 2" VENT RISE         | D11 4" SAN UP TO FD   | S5 2" DCW & 1/2" DHW DROP     |  |
| D6 4" SAN DN & 2" VENT RISE           |                       | S6 1-1/2" DCW DROP            |  |

GENERAL SHEET NOTES:

- SEE DWG. P-0.01 FOR GENERAL NOTES, SYMBOLS AND ABBREVIATIONS.
- SEE DWG. P-6.01 FOR PLUMBING SYSTEM PIPING RISER DIAGRAMS.
- SEE DWG. P-7.01 FOR PLUMBING DETAILS AND SCHEDULES.

<b>REVISIONS</b>		<b>DATE</b>	
REVISION 1		11/26/14	

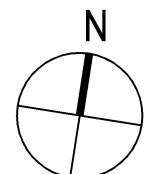
<b>MILLER-REMICK CORPORATION</b> PROFESSIONAL ENGINEER		<b>PF&amp;A</b> ARCHITECTURE, PLANNING, INTERIORS World Trade Center 101 West Main Street, Suite 7000 Norfolk, VA 23510 Phone: 757-471-0537 Fax: 757-471-4205 www.pfa-architect.com	
<b>Miller-Remick LLC</b> M.E.P. & Structural Engineering A Service Disabled Veteran Owned Small Business		<b>PF&amp;A</b>	

<b>Drawing Title</b> PLUMBING 1ST FLOOR PLAN		<b>Project Title</b> Renovations to the Former BRAC Property	
<b>Building No.</b> 20		<b>Project Architect:</b> PF&A	
<b>Location</b> Huntington, WV		<b>Checked by:</b> GL	
		<b>Drawn by:</b> PD	
		<b>Architects Proj. No.</b> 2099.11	

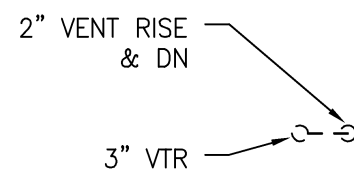
<b>Date</b> 09.03.2013	<b>Project No.</b> 581-12-101
<b>PL1.01</b>	
<b>SHEET 102 OF 115</b>	

<b>Department of Veterans Affairs</b>
---------------------------------------

FINAL CD ISSUE  
FULLY SPRINKLERED







1. SEE DWG. P-0.01 FOR GENERAL NOTES, SYMBOLS AND ABBREVIATIONS.
2. SEE DWG. P-6.01 FOR PLUMBING SYSTEM PIPING RISER DIAGRAMS.
3. SEE DWG. P-7.01 FOR PLUMBING DETAILS AND SCHEDULES.

D1 2" SAN DN & 1-1/2" VENT RISE  
D2 1-1/2" SAN DROP & 1-1/2" VENT RISE  
D3 4" SAN DROP & 2" VENT RISE  
D4 4" SAN DN & 4" VTR  
D5 2" VENT RISE & DN  
D6 3" VENT RISE & DN

- S1 1/2" DCW & 1/2" DHW DROP
- S2 1-1/2" DCW & 1/2" DHW DROP
- S3 1" SCW, 1-1/2" NG, 2" DCW, 1" DHW & 1/2" DHWR RISE & DN

**FINAL CD ISSUE  
FULLY SPRINKLERED**

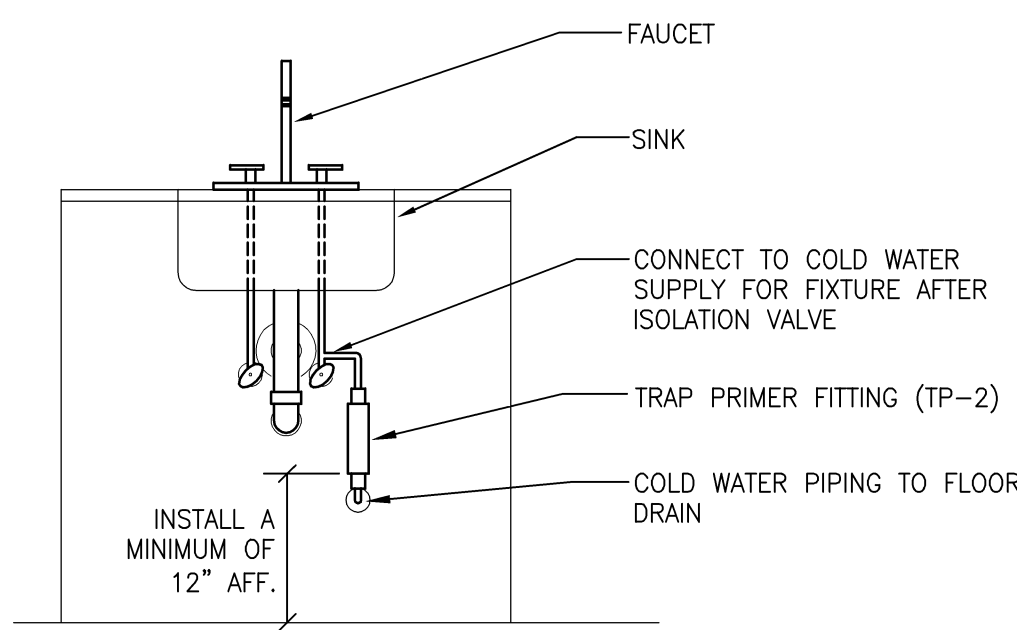
[illegible]



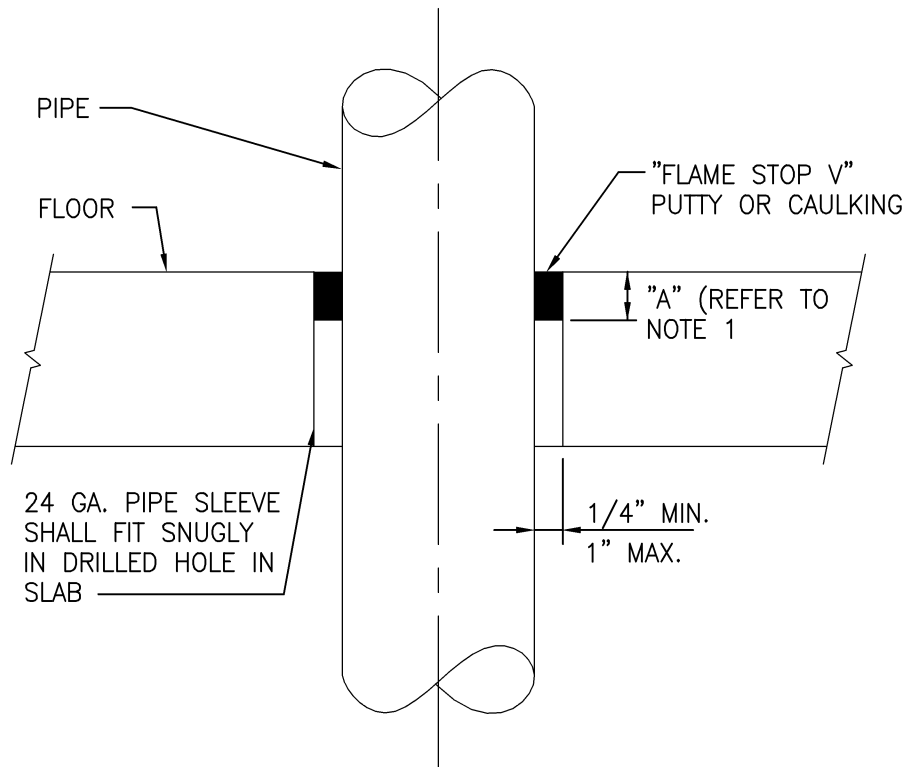




three inches = one foot  
one and one-half inches = one foot  
one inch = one foot  
three-quarters inch = one foot  
one-half inch = one foot  
three-eighths inch = one foot  
one-quarter inch = one foot  
one-eighth inch = one foot

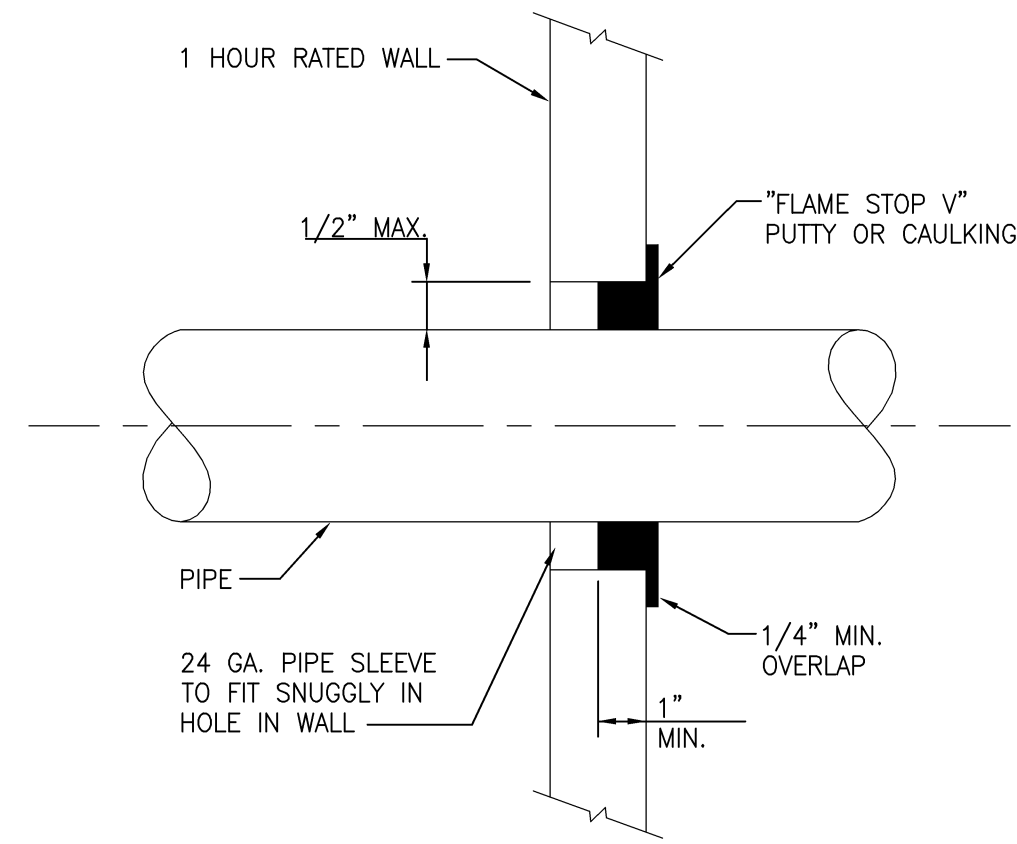


9 TRAP PRIMER DETAIL  
SCALE: NONE

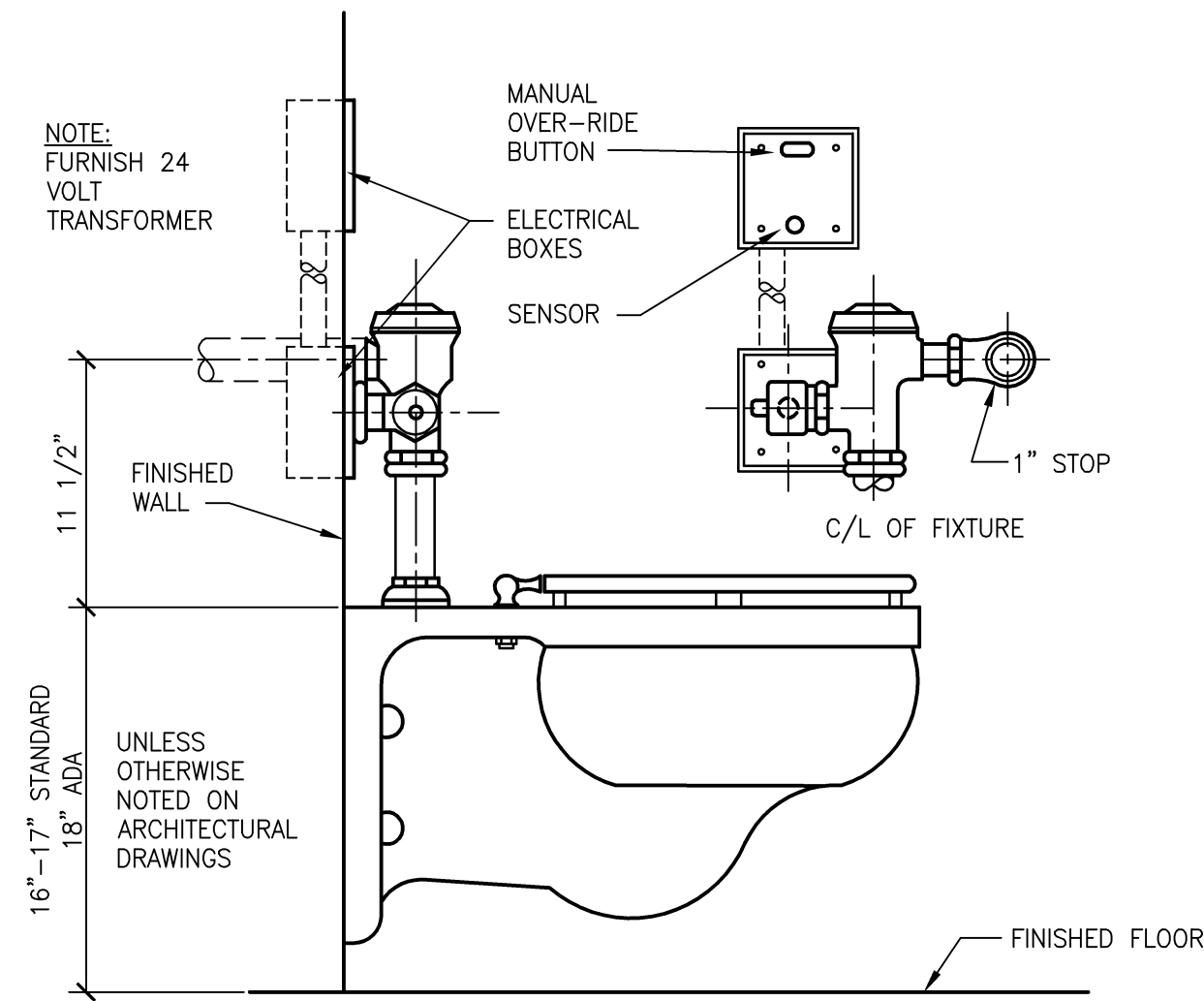


- NOTES:
- DIM "A" - FLAME STOP V DEPTH 2" MIN. FOR 3/4" TO 2" PIPE SIZES & 4" MIN. FOR 2- 1/2" TO 6" PIPE SIZES.
  - INSTALLATION SHALL BE IN ACCORDANCE WITH THE MANUFACTURERS INSTRUCTIONS AND THE CITY OF WILKES BARRE BUILDING INSPECTION DEPARTMENT REGULATIONS

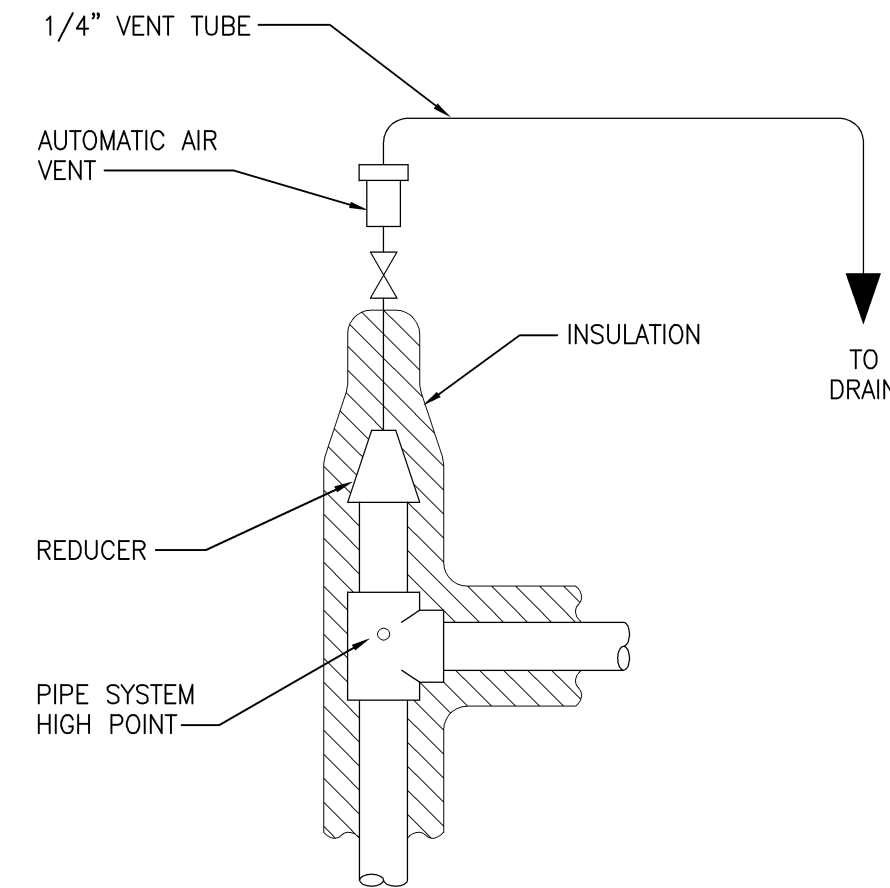
8 TYPICAL FLOOR PENETRATION DETAIL  
SCALE: NONE



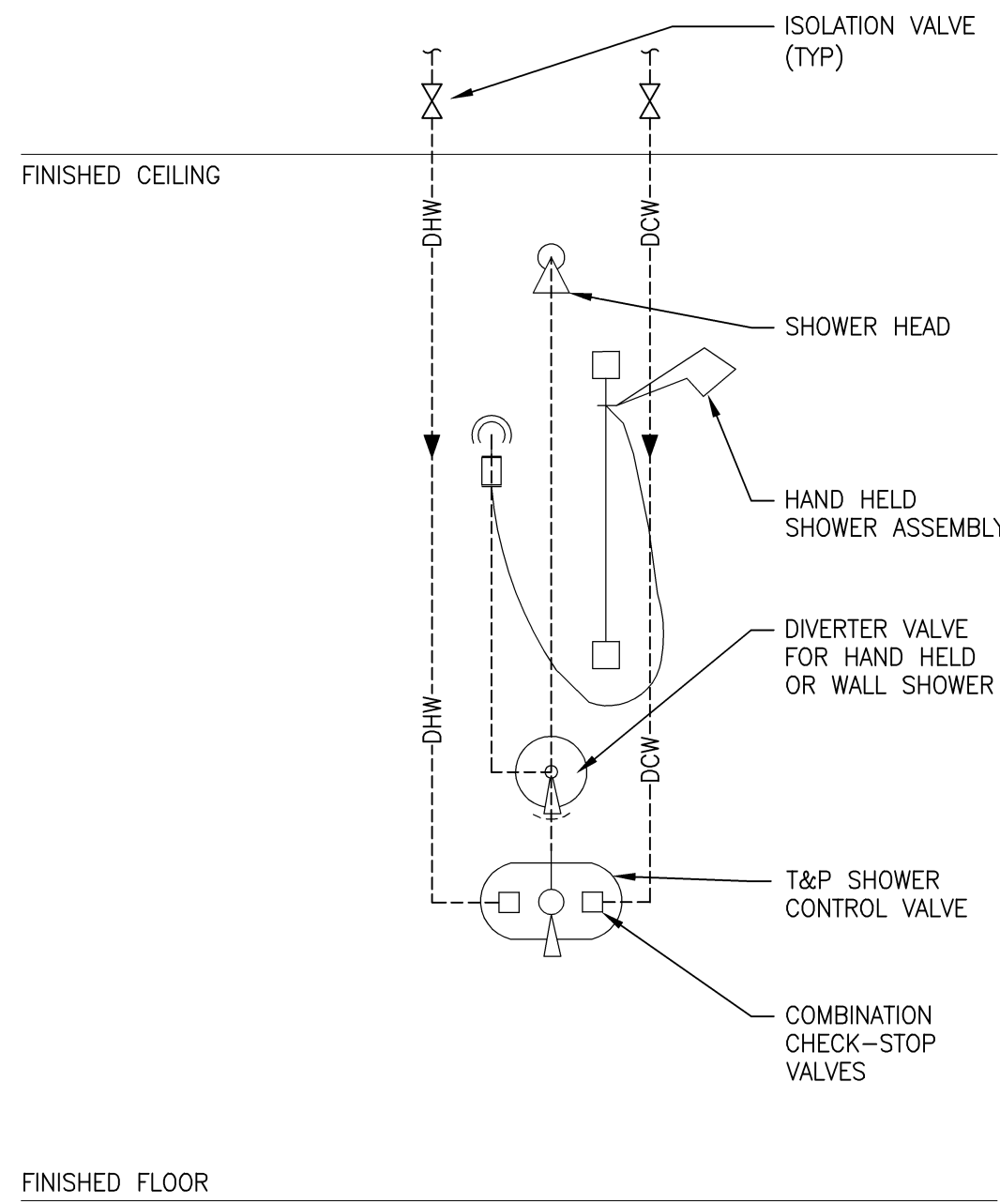
7 TYPICAL WALL PENETRATION DETAIL  
SCALE: NONE



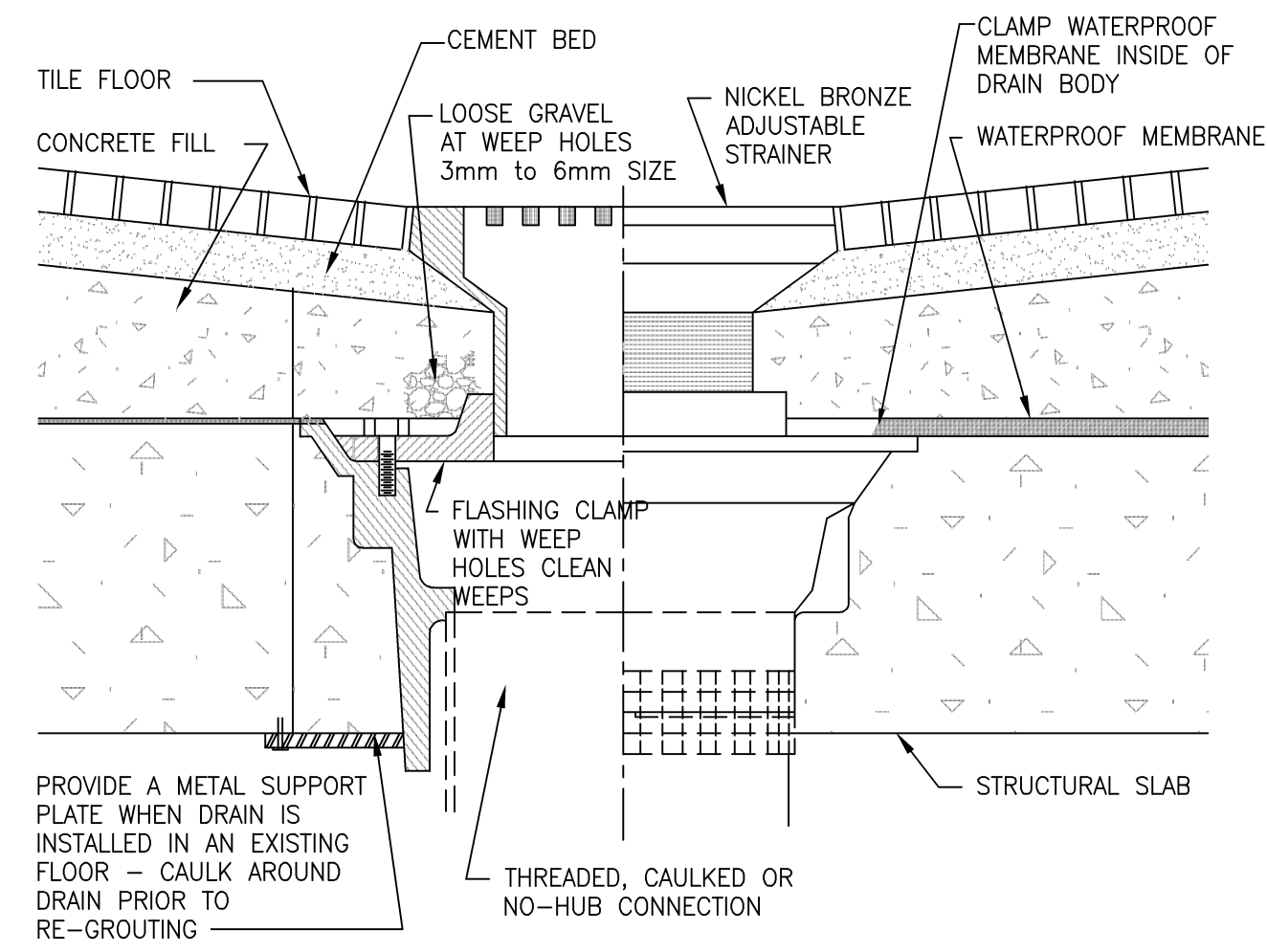
6 WATER CLOSET DETAIL  
SCALE: NONE



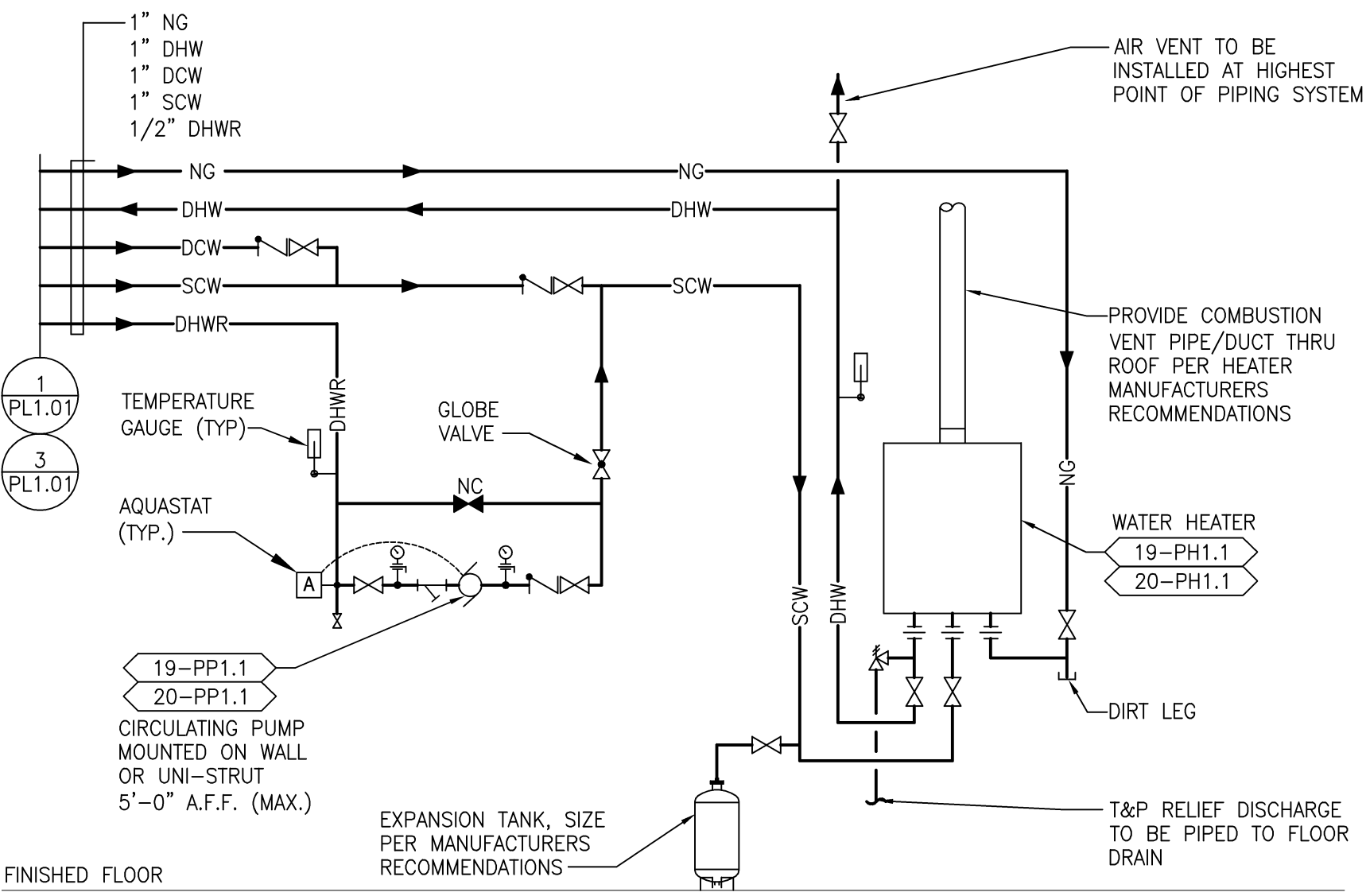
5 HIGH POINT VENT DETAIL  
SCALE: NONE



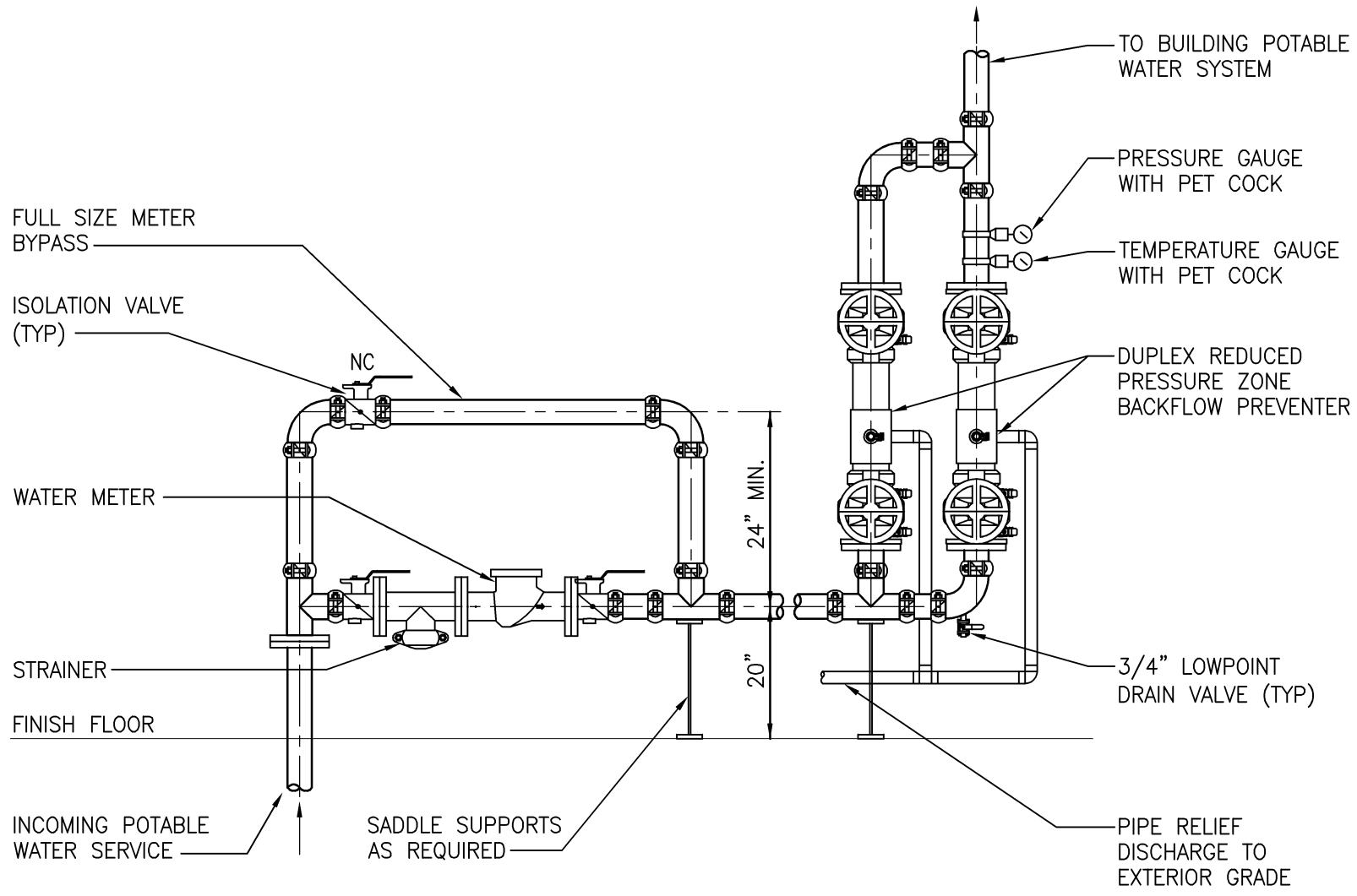
4 SHOWER PIPING DETAIL  
SCALE: NONE



3 TYPE "C" FLOOR DRAIN DETAIL  
SCALE: NONE

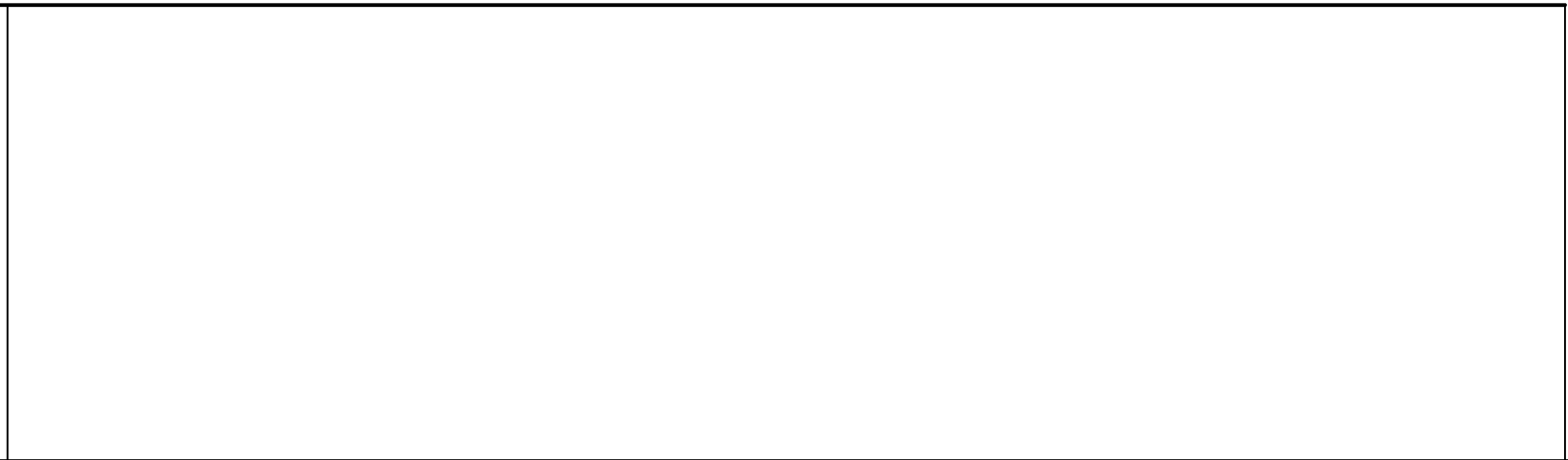
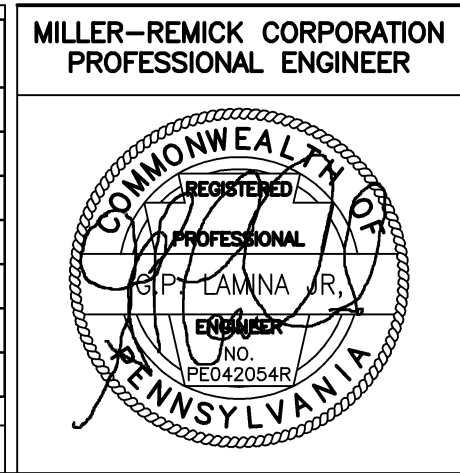


2 INSTANTANEOUS DOMESTIC WATER HEATER DETAIL  
SCALE: NONE



1 POTABLE WATER SERVICE VALVE ASSEMBLY DETAIL  
SCALE: NONE

Revisions	Date
REVISION 1	11/26/14



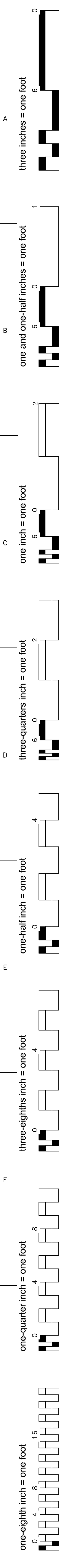
Drawing Title	PLUMBING DETAILS
Building No.	20
Location	Huntington, WV

Project Title	Renovations to the Former BRAC Property
Project Architect:	PF&A
Checked by:	GL
Drawn by:	PD
Architects Proj. No.	2099.11

Date	09.03.2013
Project No.	581-12-101
P7.01	SHEET 105 OF 115







PLUMBING FIXTURE SCHEDULE														
MARK	DESCRIPTION	WASTE PIPE		VENT PIPE		COLD WATER		HOT WATER		WASTE FIXTURE UNITS	WATER FIXTURE UNITS	WRIST BLADE HANDLES	ELECTRIC SENSOR	REMARKS
		IN	[mm]	IN	[mm]	IN	[mm]	IN	[mm]					
P-103	WATER CLOSET	4	[ 75 ]	2	[ 50 ]	1.25	[ 31 ]			6	10	N/A	YES	WALL MOUNTED
P-101	WATER CLOSET	4	[ 100 ]	2	[ 50 ]	1.25	[ 31 ]			6	10	N/A	YES	FLOOR MOUNTED
P-203	URINAL	2	[ 50 ]	1.5	[ 38 ]	.75	[ 19 ]			2	3	N/A	YES	WALL MOUNTED
P-415	LAVATORY	1.5	[ 38 ]	1.5	[ 38 ]	.5	[ 13 ]	.5	[ 13 ]	1	1	N/A	NO	WALL HUNG
P-417	LAVATORY	1.5	[ 38 ]	1.5	[ 38 ]	.5	[ 13 ]	.5	[ 13 ]	1	1	N/A	NO	COUNTER TOP MOUNTED
P-502	SINK SERVICE	3	[ 75 ]	1.5	[ 38 ]	.75	[ 19 ]	.75	[ 19 ]	2	4	N/A	NO	FLOOR MOUNTED
P-528	PANTRY SINK	1.5	[ 38 ]	1.5	[ 38 ]	.75	[ 19 ]	.75	[ 19 ]	3	2	N/A	NO	
P-604	ELECTRIC WATER COOLER	1.5	[ 38 ]	1.5	[ 38 ]	.5	[ 13 ]			.5	1	N/A	NO	
P-609	ELECTRIC WATER COOLER	1.5	[ 38 ]	1.5	[ 38 ]	.5	[ 13 ]			.5	1	N/A	NO	DUEL HEIGHT
P-704	SHOWER	2	[ 50 ]	1.5	[ 38 ]	.5	[ 13 ]	.5	[ 13 ]	2	2	N/A	NO	
P-801	WALL HYDRANT					.75	[ 19 ]					N/A	NO	NON-FREEZE
P-802	HOSE STATION					.75	[ 19 ]	.75	[ 19 ]			N/A	NO	
P-804	HOSE BIB					.75	[ 19 ]					N/A	NO	WALL MOUNTED

PLUMBING PUMP SCHEDULE																						
MARK	LOCATION	AREA AND/OR BLDG SERVED	SYSTEM AND/OR SERVICE	TYPE	CIRCULATING FLUID										ELECTRICAL MOTOR						REMARKS	
					FLUID	FLOW		HEAD		NPSH AVAILABLE		TEMPERATURE		SP. GR.	MIN. % EFF	NOMINAL POWER		PHASE	VOLT	MAX RPM		SPEED CONTROL
						GPM	[L/s]	FT	[kPa]	FT	[kPa]	°F	[°C]			HP	[kW]					
19-PP1.1	RM 19100	BUILDING 19	DOMESTIC HOT WATER	CENT	POTABLE WATER	1	[ ]	6	[ 96 ]	NA	NA	120	[ 49 ]	1	70	0.025	[ ]	1	115	3250	CONSTANT	----
20-PP1.1	RM 20121	BUILDING 20	DOMESTIC HOT WATER	CENT	POTABLE WATER	2	[ ]	9	[ 140 ]	NA	NA	120	[ 49 ]	1	70	0.125	[ ]	1	115	3250	CONSTANT	----

GAS FIRED WATER HEATER SCHEDULE																					
MARK	LOCATION	AREA AND/OR BLDG SERVED	SYSTEM AND/OR SERVICE	TYPE	STORAGE CAPACITY		RECOVERY @ 100 °F [38°C] RISE		TIME TO RECOVER CONTENTS, MINUTES	RELIEF VALVE SETTING		TYPE	FUEL				ELECTRICAL MOTOR				REMARKS
					GAL	[L]	GAL/HR	[L/HR]		PSIG	[kPa]		INLET PRESSURE	FLOW		NOMINAL POWER, EA		PHASE	VOLT		
														IN WG	[Pa]	CFH	[L/H]			HP	
19-PH1.1	RM 19100	BLDG 19	DOMESTIC WATER HEATER	INSTANTANEOUS	0	[ ]	450	[ 1700 ]	0	100	[ 690 ]	NATURAL GAS	6	[ 1500 ]	380	[ 11000 ]	0	[ ]	1	120	RATED FOR 10 GPM @ 65°F RISE
20-PH1.1	RM 20121	BLDG 20	DOMESTIC WATER HEATER	INSTANTANEOUS	0	[ ]	450	[ 1700 ]	0	100	[ 690 ]	NATURAL GAS	6	[ 1500 ]	380	[ 11000 ]	0	[ ]	1	120	RATED FOR 10 GPM @ 65°F RISE

WATER SOFTENER SCHEDULE																								
MARK	LOCATION	AREA AND/OR BLDG SERVED	SYSTEM AND/OR SERVICE	TYPE	INCOMING WATER HARDNESS	CONTINUOUS FLOW RATE		PEAK FLOW RATE		INLET PRESSURE		BACK WASH FLOW RATE		CAPACITY/ SALT DOSAGE			TANK SIZE (DIAM)		SALT CAPACITY OF BRINE TANK		POWER REQUIRED			REMARKS
						GPM	[L/s]	GPM	[L/s]	PSIG	KPA	GPM	[L/s]	SALT DOSAGE	MIN. BED (SUBFILL OF SAND)	MAX. BED								
					PPM												LBS/ CUFT	[KG]/[LB]	[KG]/[LB]	IN	[mm]	LB	[KG]	
19-WS1.1	RM 19100	BLDG 19	DOMESTIC HOT WATER	ION EXCHANGE	114	5	[ ]	10	[ 1 ]	[ 80 ]	[ 550 ]	10	[ 1 ]	15		1430	12	[ 300 ]	50	[ 23 ]		1	120	---
20-WS1.1	RM 20121	BLDG 20	DOMESTIC HOT WATER	ION EXCHANGE	114	10	[ 1 ]	20	[ 1 ]	[ 80 ]	[ 550 ]	20	[ 1 ]	15		2760	16	[ 400 ]	50	[ 23 ]		1	120	

PRESSURE REGULATOR / CIRCUIT SETTER SCHEDULE															
MARK	LOCATION	AREA AND/OR BLDG SERVICE	SYSTEM AND/OR SERVICE	TYPE	CAPACITY		INLET PRESSURE		INLET SIZE		OUTLET PRESSURE		OUTLET SIZE		REMARKS
							PSIG	[kPa]	IN	[mm]	PSIG	[kPa]	IN	[mm]	
CS1.1	MECH RM 20121	FIRST FLOOR	DOMESTIC HOT WATER	MANUAL BALL	1 GPM		29	[ 200 ]	0.5	[ 13 ]	28	[ 190 ]	0.5	[ 13 ]	W/ DIFFERENTIAL PRESSURE READ-OUT PORTS
CS1.2	MECH RM 20121	SECOND FLOOR	DOMESTIC HOT WATER	MANUAL BALL	1 GPM		37	[ 260 ]	0.5	[ 13 ]	28	[ 190 ]	0.5	[ 13 ]	W/ DIFFERENTIAL PRESSURE READ-OUT PORTS

REVISION 1

11/26/14

Revisions

Date

MILLER-REMICK CORPORATION  
PROFESSIONAL ENGINEER

Miller-Remick LLC

M.E.P. & Structural Engineering

A Service Disabled Veteran Owned Small Business

PF&A DESIGN  
ARCHITECTURE, PLANNING, INTERIORS  
World Trade Center  
101 West Main Street, Suite 7000  
Norfolk, VA 23510  
Phone: 757-471-0537  
Fax: 757-471-4205  
www.pfa-architect.com

Drawing Title  
PLUMBING SCHEDULES

Building No.  
20

Location  
Huntington, WV

Project Title  
Renovations to the Former BRAC Property

Project Architect: PF&A

Checked by: GL

Drawn by: PD

Architects Proj. No.  
2099.11

Date  
09.03.2013

Project No.  
581-12-101

P8.01

SHEET 106 OF 115

Department of Veterans Affairs

FINAL CD ISSUE  
FULLY SPRINKLERED