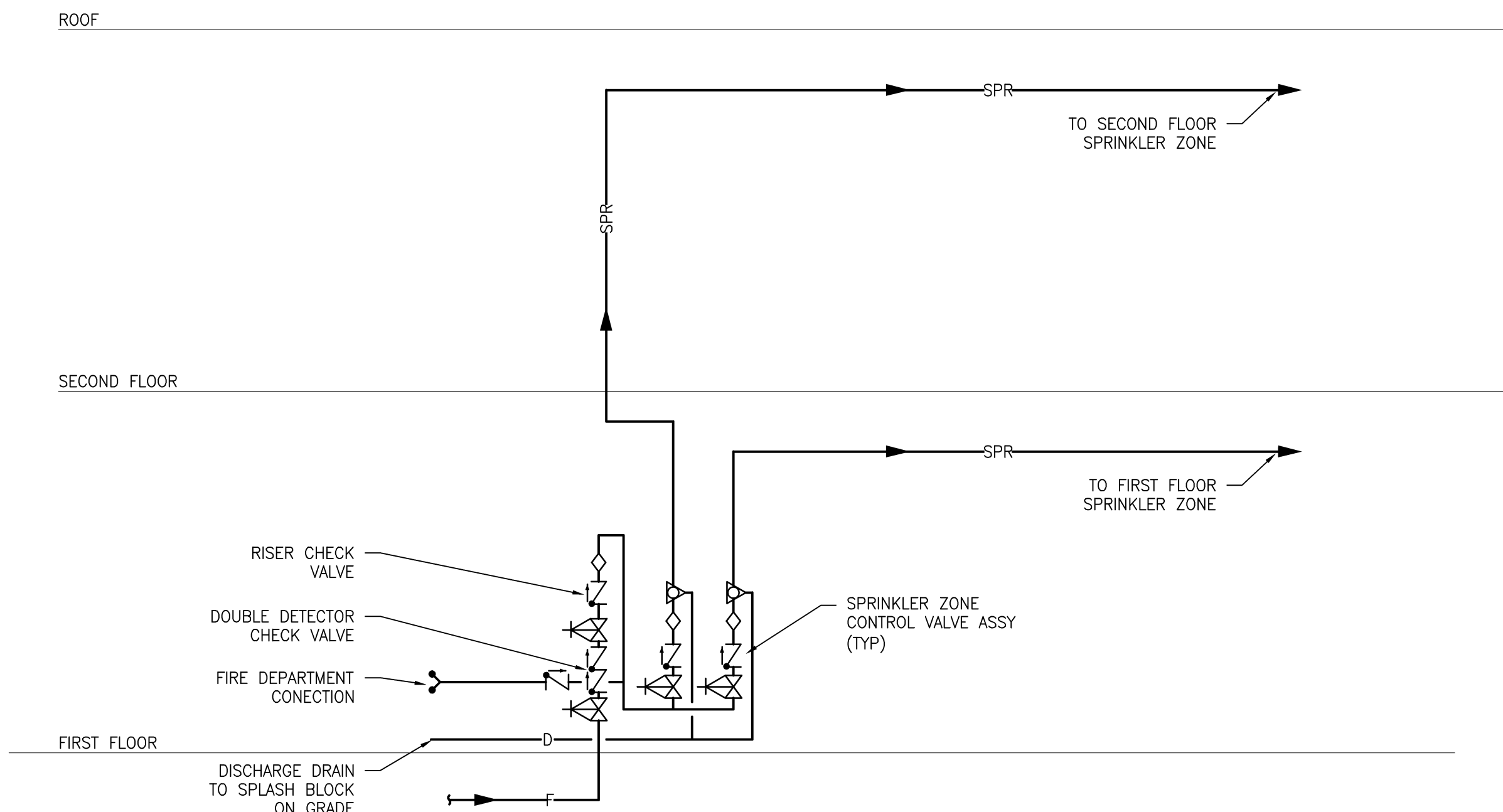
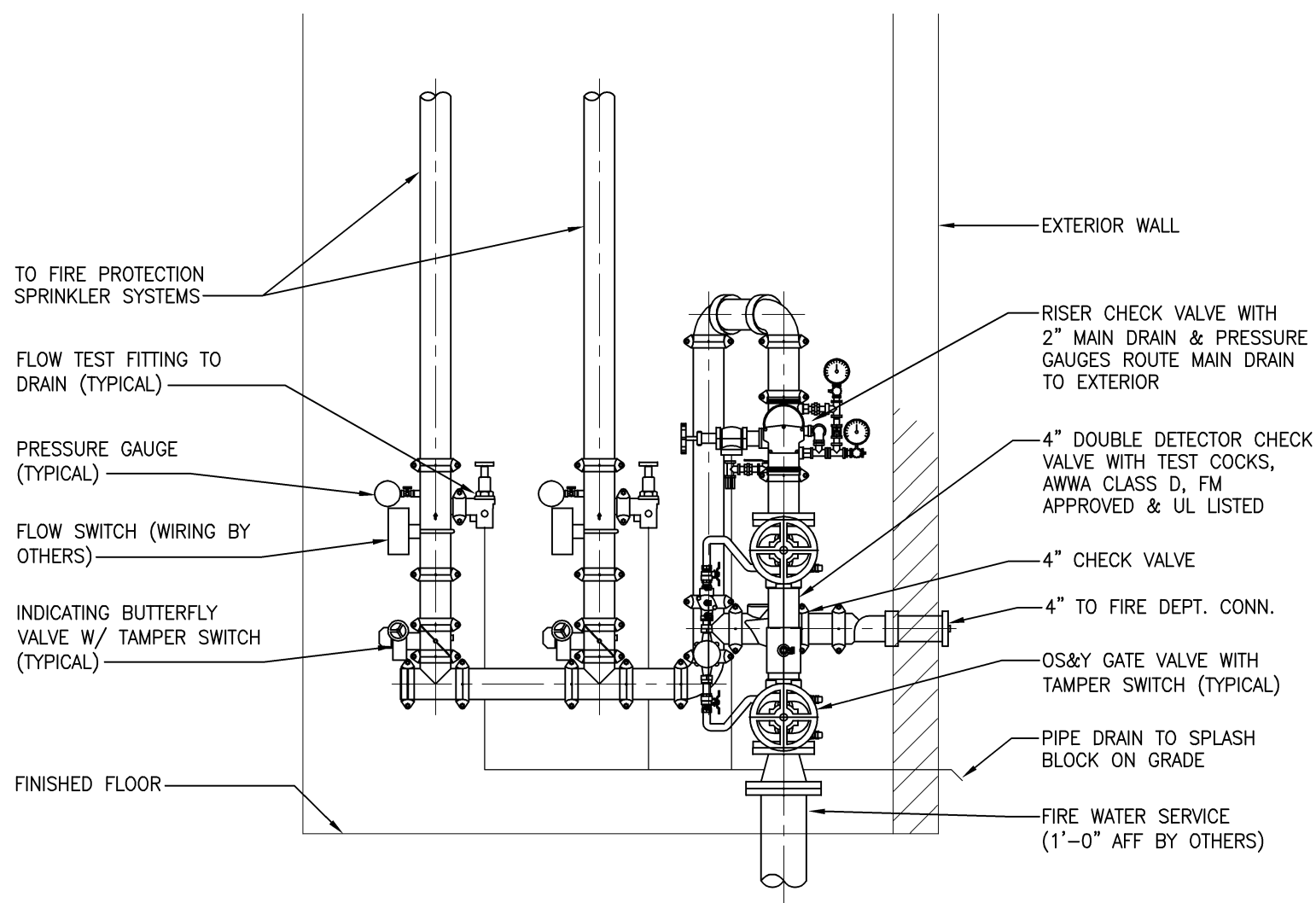


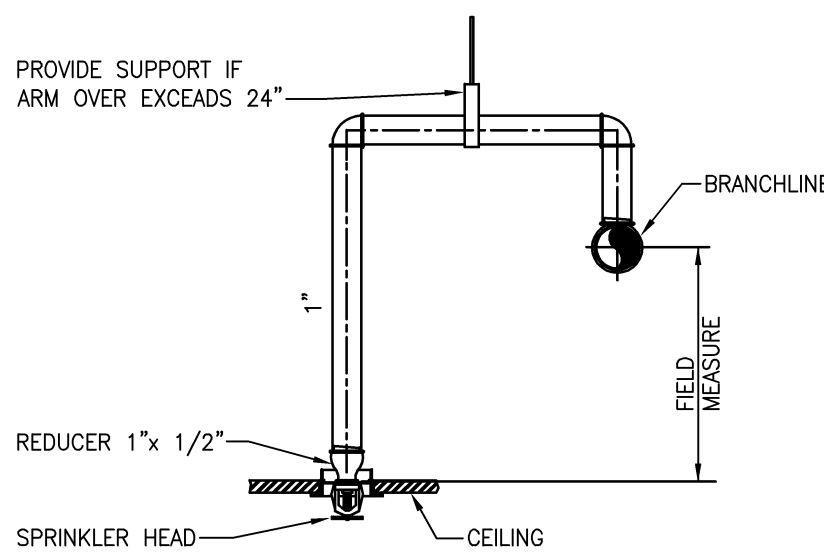
three inches = one foot
one and one-half inches = one foot
one inch = one foot
three-quarters inch = one foot
one-half inch = one foot
three-eighths inch = one foot
one-quarter inch = one foot
one-eighth inch = one foot



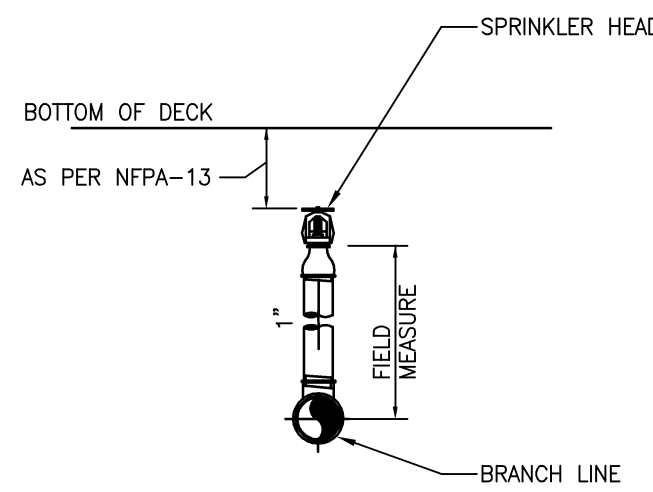
5 FIRE PROTECTION RISER DIAGRAM
NOT TO SCALE



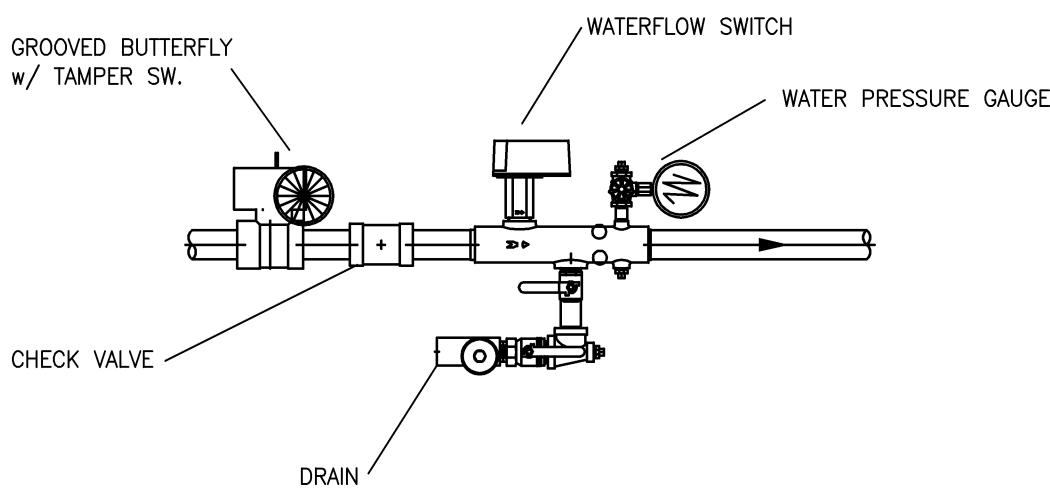
4 FIRE WATER SERVICE VALVE ASSEMBLY
NOT TO SCALE



3 TYPICAL DROP PENDENT DETAIL
NOT TO SCALE



2 TYPICAL UPRIGHT/SPRIG DETAIL
NOT TO SCALE



1 TYPICAL ZONE CONTROL ASSEMBLY
NOT TO SCALE

GENERAL NOTES

- FIRE PROTECTION SPRINKLER INSTALLATION SHALL MEET THE REQUIREMENTS OF THE FOLLOWING:
 - NFPA 13 AND 14, 2013.
 - LOCAL AND STATE REGULATIONS AND IBC 2012.
 - DVA FIRE PROTECTION MANUAL; SIXTH ED.; REVISED SEPTEMBER 2011
- SPRINKLER HEADS SHALL BE FM APPROVED QUICK RESPONSE IN ALL AREAS EXCEPT WHERE SPECIFICALLY PROHIBITED, IN COMPLIANCE WITH VA GUIDELINES AND NFPA REQUIREMENTS.
- SPRINKLERS THROUGHOUT THE BUILDING TO BE ORDINARY TEMPERATURE RATED EXCEPT FOR ELECTRICAL ROOMS/CLOSETS SHALL BE INTERMEDIATE TEMPERATURE RATED AND MECHANICAL ROOMS TO BE PROVIDED WITH HIGH TEMPERATURE RATED HEADS.
- SPRINKLER PIPE SIZES AND SPRINKLER HEAD LOCATIONS SHALL CONFORM TO NFPA REQUIREMENTS.
- PIPE HANGERS TO BE INSTALLED AS REQUIRED BY N.F.P.A. FOR SUPPORTING SPRINKLER PIPING. NO OTHER PIPING AND/OR DEVICES ARE TO BE ATTACHED TO THE SPRINKLER PIPE.
- PIPING SHALL NOT BE LOCATED IN ANY ELECTRICAL ROOMS/CLOSETS OR TELECOMMUNICATION ROOMS/CLOSETS UNLESS THOSE PIPES SERVE ONLY THAT SPACE.
- ALL SPRINKLER PIPE TO MAINTAIN A 6'-0" MIN VERTICAL CLEARANCE FROM TOP OF ELECTRICAL CONTROL PANELS & SWITCHGEAR/TRANSFORMERS.
- PROVIDE SPRINKLER ZONE FLOOR CONTROL VALVE ASSEMBLY CONSISTING OF CONTROL VALVE, CHECK VALVE, FLOW SWITCH, SELF-CONTAINED TEST AND DRAIN ASSEMBLY AND PRESSURE GAGE, ON THE SPRINKLER MAIN BRANCH SERVING EACH FLOOR.
- INSTALL PIPING SO THAT VALVES ARE ACCESSIBLE AND STEMS EXTEND VERTICALLY UP. ALL CONTROL VALVES SHALL BE EQUIPPED WITH TAMPER SWITCHES.
- ALL WATER FLOW SWITCHES MUST BE ISOLATED BY MEANS OF A FITTING OR UNION ON BOTH SIDE TO FACILITATE REMOVAL AND SERVICE OF THE FLOW SWITCH.
- THE FIRE PROTECTION CONTRACTOR SHALL PROVIDE THE QUANTITY OF SPRINKLER HEADS AS REQUIRED TO MAINTAIN THE MINIMUM COVERAGE REQUIRED BY NFPA 13 IS ALL AREAS THE BUILDING.
- COORDINATE COLOR OF SPRINKLER HEAD COVER PLATES WITH CEILINGS THROUGHOUT PROJECT. MATCH CEILING COLOR AS REQUIRED.
- COORDINATE THE EXACT LOCATION OF ALL SPRINKLER HEADS, PIPING, EQUIPMENT, AND DEVICES WITH ARCHITECTURAL DRAWINGS AND THE RESPECTIVE DRAWINGS OF PIPING, DUCTWORK, DIFFUSERS, BEAMS, LIGHTS, ETC. THIS CONTRACTOR SHALL VERIFY THE EXACT LOCATION OF THESE COMPONENTS IN THE FIELD.
- PROVIDE COMPLETE AND FUNCTIONAL FIRE PROTECTION SYSTEMS FOR THE PROJECT. THE SYSTEMS SHALL CONFORM TO THE SPECIFICATIONS AND AS SHOWN ON DRAWINGS. ITEMS OR WORK NOT SHOWN OR SPECIFIED, BUT REQUIRED FOR COMPLETE SYSTEMS, SHALL BE PROVIDED AND CONFORM TO ACCEPTED TRADE PRACTICES. THE DRAWINGS AND SPECIFICATIONS ARE PRESENTED TO DEFINE SPECIFIC SYSTEM REQUIREMENTS AND SERVE TO EXPAND ON THE PRIMARY CONTRACT REQUIREMENTS OF PROVIDING COMPLETE SYSTEMS. THE DRAWINGS ARE DIAGRAMMATIC AND INDICATE THE GENERAL ARRANGEMENT AND ROUTING OF THE SYSTEMS INCLUDED IN THIS CONTRACTORS WORK.
- THESE DRAWINGS WERE PREPARED FROM INFORMATION TAKEN FROM THE ORIGINAL BUILDING DRAWINGS AND FIELD SURVEY INFORMATION COMPILED BY THE ENGINEERING DESIGN TEAM FOR THE PURPOSE OF ENGINEERING DESIGN CONCEPT. EXISTING CONDITIONS ARE SHOWN AS ACCURATELY AS POSSIBLE. THERE IS THE POSSIBILITY THAT CONDITIONS SHOWN ARE NOT EXACTLY AS EXISTING. CONTRACTOR SHALL VERIFY ALL DIMENSIONS, ELEVATIONS, LOCATIONS, SIZES AND CONDITIONS AT THE SITE AND REPORT ANY DISCREPANCIES TO THE ARCHITECT PRIOR TO BEGINNING INSTALLATION OR FABRICATION WORK.
- THE CONTRACTOR WILL BE RESPONSIBLE FOR ENSURING THAT ALL RULES AND REGULATIONS, INCLUDING THOSE WHICH MAY BE ISSUED BY THE OWNER, ARE BEING OBSERVED, PARTICULARLY WORKPLACE SAFETY AND THE CONDUCT OF ALL THOSE EMPLOYED DIRECTLY AND INDIRECTLY BY HIM ON THE PREMISES, AND THE OWNER'S EMPLOYEES WHO MAY BE IMPACTED OR AFFECTED BY CONSTRUCTION ACTIVITIES. THE CONTRACTOR WILL INSTALL SIGNAGE, BARRIERS, AND OTHER MEANS TO PROVIDE WARNING AND PERSONNEL SAFETY. PLACEMENT OF THESE ITEMS WILL BE COORDINATED WITH THE OWNER AND HIS ONGOING OPERATIONS AND WILL PROMPTLY BE REVISED WHEN WORK IN A PARTICULAR AREA HAS BEEN COMPLETED.
- CONTRACTOR SHALL MAKE ALL NECESSARY SUBMISSIONS AND OBTAIN ALL NECESSARY PERMITS AND APPROVALS PRIOR TO STARTING FABRICATION AND CONSTRUCTION.

FIRE PROTECTION DESIGN CRITERIA

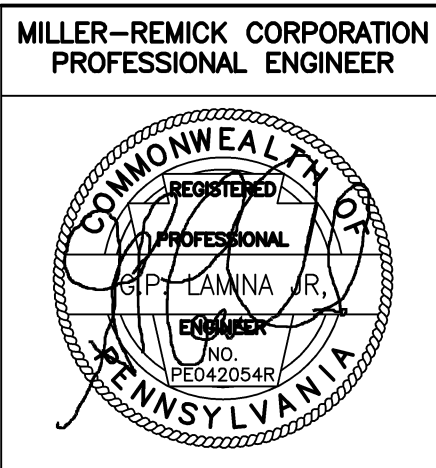
- SYSTEM TYPE; WET PIPE
- SPRINKLER HEAD SPACING AND PIPE SIZING SHALL BE:
 - TOILET ROOMS, OFFICES AND COMMON AREAS; LIGHT HAZARD (0.10 GPM/SQ.FT. OVER 1500 SQ.FT., 225 SQ.FT. PER SPRINKLER HEAD)
 - MECHANICAL AND ELECTRICAL ROOMS; ORDINARY GROUP I HAZARD (0.15 GPM/SQ.FT. OVER 1500 SQ.FT., 130 SQ.FT. PER SPRINKLER HEAD)
 - STORAGE ROOMS; ORDINARY GROUP II HAZARD (0.20 GPM/SQ.FT. OVER 1500 SQ.FT., 130 SQ.FT. PER SPRINKLER HEAD)
- PROVIDE FOR AN ADDITIONAL WATER ALLOWANCE OF 100 GPM FOR INSIDE AND OUTSIDE HOSE STREAMS TO THE SPRINKLER HYDRAULIC REQUIREMENTS.
- THE CALCULATED DEMAND INCLUDING HOSE STREAM REQUIREMENTS SHALL FALL NO LESS THAN 10 PERCENT BELOW THE AVAILABLE WATER SUPPLY.
- SYSTEM SHALL BE DESIGNED ON A HYDRAULICALLY CALCULATED BASIS UTILIZING THE AREA DENSITY METHOD PER THE NFPA 13 BY THE SPRINKLER CONTRACTOR. CALCULATIONS AND SHOP DRAWINGS SHALL BE SIGNED AND SEALED BY A PROFESSIONAL ENGINEER LICENSED IN THE STATE OF WEST VIRGINIA.
- CONDUCT A NEW WATER SUPPLY FLOW PRESSURE TEST. SPRINKLER PIPE SIZES SHALL BE DETERMINED BY HYDRAULIC CALCULATIONS BASED ON THE RESULTS OF THIS TEST.

LEGEND

F	FIRE PIPING
SPR	SPRINKLER PIPING
◇	WATERFLOW SWITCH
▽	CHECK VALVE
▽	OS&Y (OR INDICATING TYPE) VALVE
▽	INSPECTORS TEST FITTING
⊙	PRESSURE GAUGE
⊙	GROUND FACE UNION OR FLANGES
⊙	RECESSED PENDENT SPRINKLER HEAD
○	UPRIGHT SPRINKLER HEAD
ABV	ABOVE
ASSY	ASSEMBLY
BLW	BELOW
CLG	CEILING
FDC	FIRE DEPARTMENT CONNECTION
FLR	FLOOR
SPR	SPRINKLER

FINAL CD ISSUE FULLY SPRINKLERED

REVISION 1	11/26/14
Revisions	Date



PF&A DESIGN
ARCHITECTURE, PLANNING, INTERIORS
World Trade Center
101 West Main Street, Suite 7000
Norfolk, VA 23510
Phone: 757-471-0537
Fax: 757-471-4205
www.pfa-architect.com

Drawing Title	FIRE PROTECTION GENERAL NOTES, LEGEND AND DETAILS
Building No.	20
Location	Huntington, WV

Project Title	Renovations to the Former BRAC Property
Project Architect:	PF&A
Checked by:	GL
Drawn by:	PD
Architects Proj. No.	2099.11

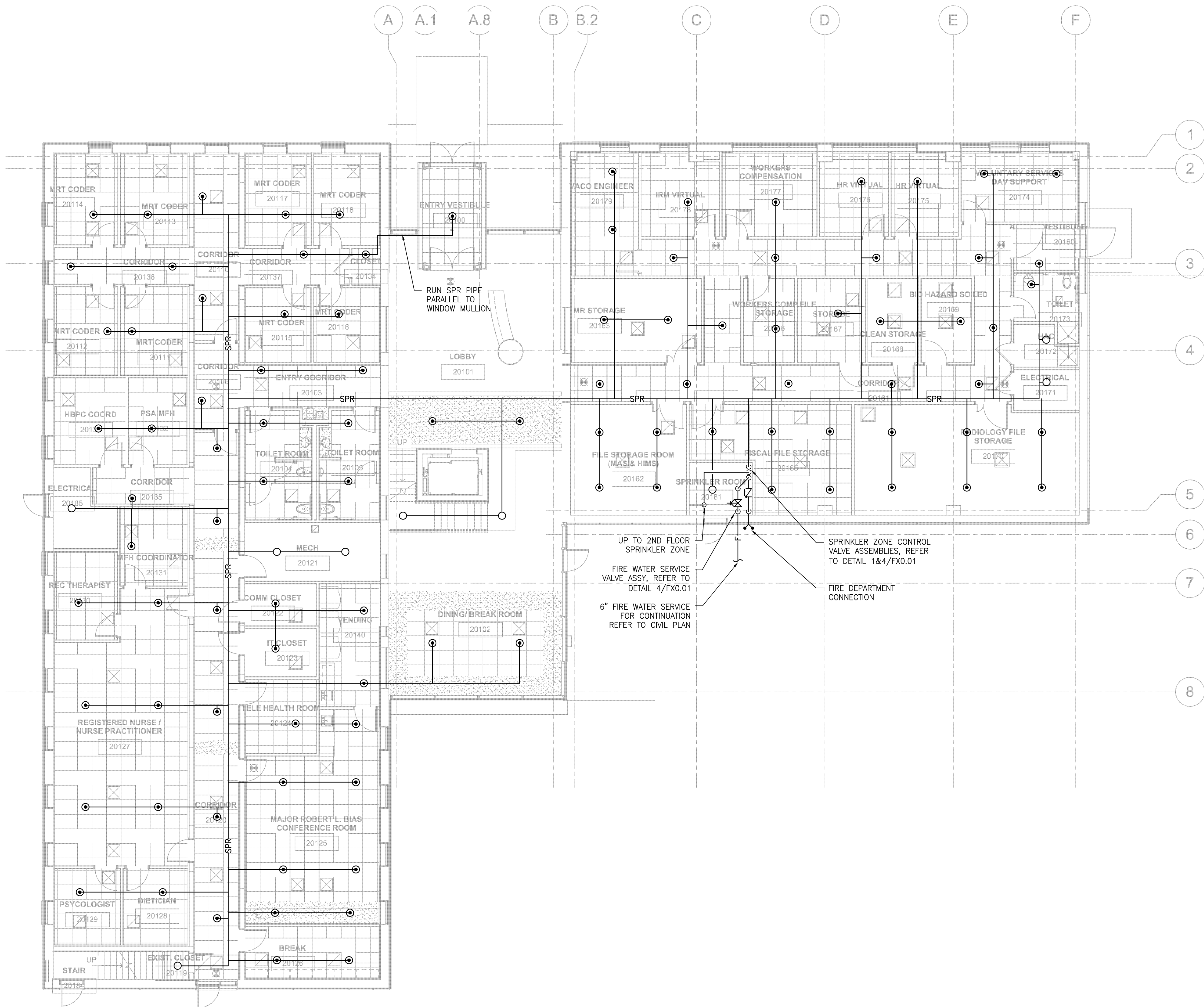
Date	09.03.2013
Project No.	581-12-101
FX0.01	SHEET 107 OF 115



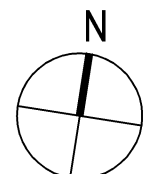
three eighths inch = one foot
one quarter inch = one foot
one eighth inch = one foot
one half inch = one foot
three quarters inch = one foot
one inch = one foot
one and one half inches = one foot
three inches = one foot

GENERAL SHEET NOTES:

1. SEE DWG. FX0.01 FOR FIRE PROTECTION GENERAL NOTES, LEGEND, RISER DIAGRAM AND DETAILS.

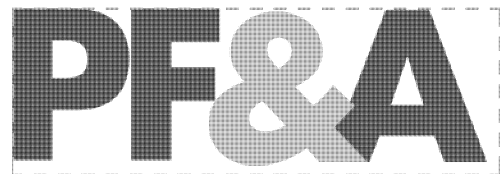
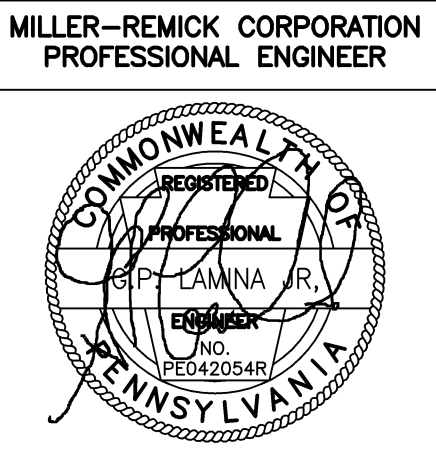


1 FIRE PROTECTION 1ST FLOOR PLAN
SCALE: 1/8" = 1'-0"



FINAL CD ISSUE
FULLY SPRINKLERED

Revisions	Date
REVISION 1	11/26/14



PF&A DESIGN
ARCHITECTURE, PLANNING, INTERIORS
World Trade Center
101 West Main Street, Suite 7000
Norfolk, VA 23510
Phone: 757-471-0537
Fax: 757-471-4205
www.pfa-architect.com

Drawing Title	FIRE PROTECTION 1ST FLOOR PLAN
Building No.	20
Location	Huntington, WV

Project Title	Renovations to the Former BRAC Property
Project Architect:	PF&A
Checked by:	GL
Drawn by:	PD
Architects Proj. No.	2099.11

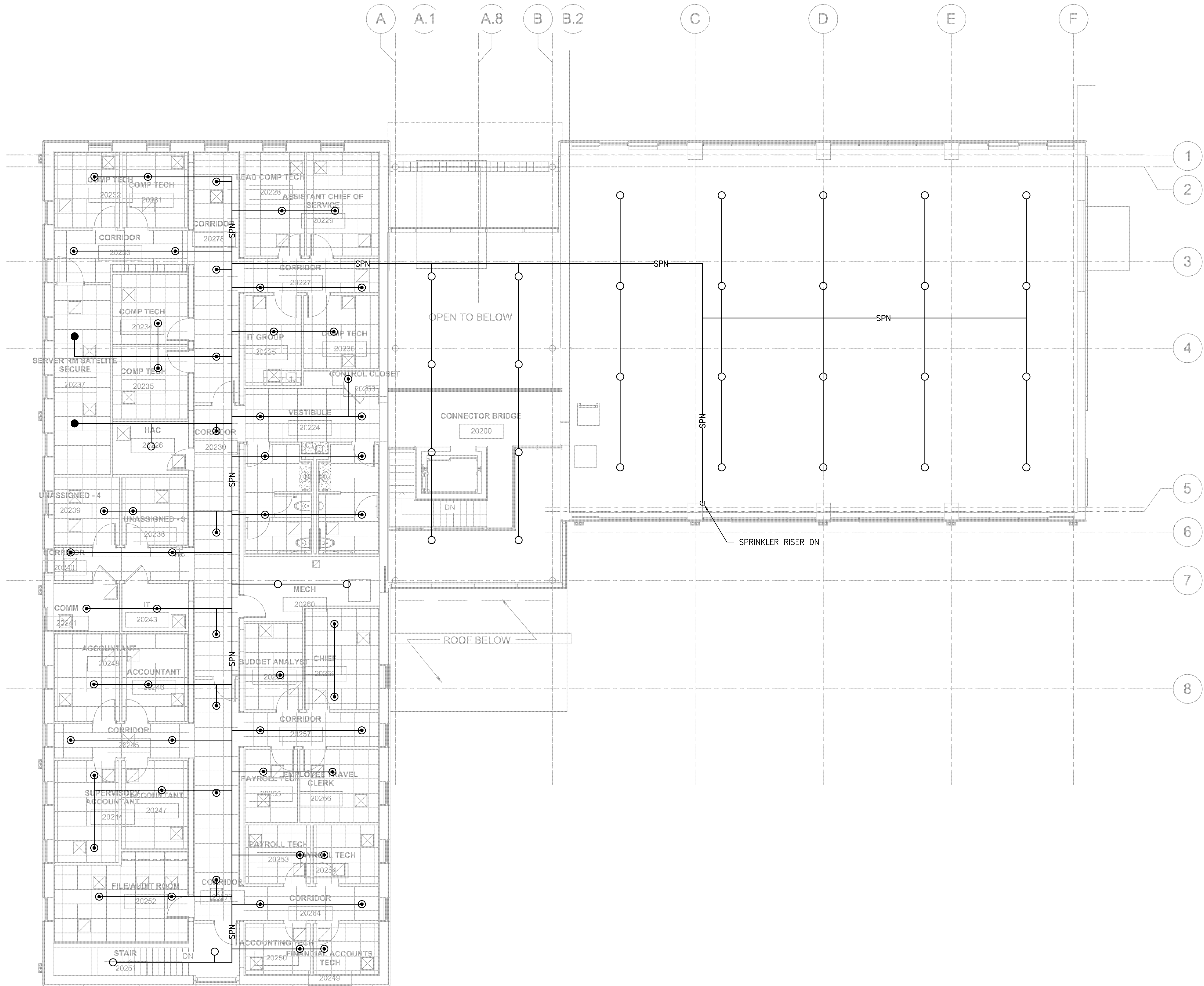
Date	09.03.2013
Project No.	581-12-101
FX1.01	
SHEET 108 OF 115	



three eighths inch = one foot
one quarter inch = one foot
three eighths inch = one foot
one half inch = one foot
three quarters inch = one foot
one inch = one foot
one and one half inches = one foot
three inches = one foot

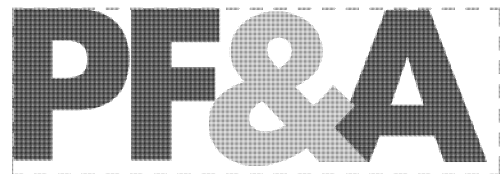
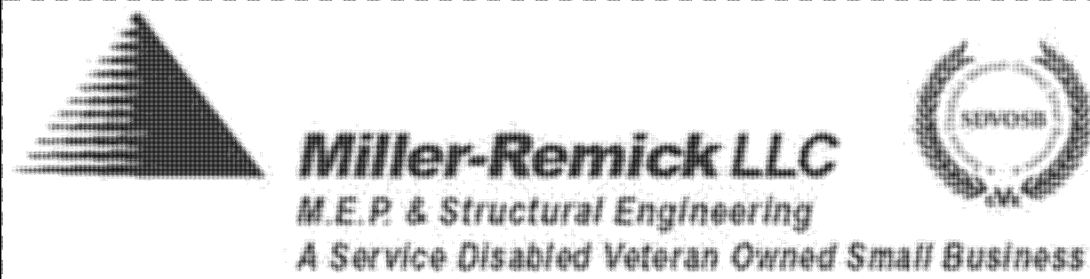
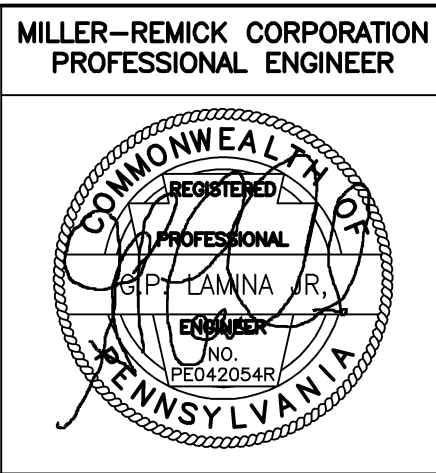
GENERAL SHEET NOTES:

1. SEE DWG. FX0.01 FOR FIRE PROTECTION GENERAL NOTES, LEGEND, RISER DIAGRAM AND DETAILS



1 FIRE PROTECTION 2ND FLOOR PLAN
SCALE: 1/8" = 1'-0"

Revisions	Date
REVISION 1	11/26/14



PF&A DESIGN
ARCHITECTURE, PLANNING, INTERIORS
World Trade Center
101 West Main Street, Suite 7000
Norfolk, VA 23510
Phone: 757-471-0537
Fax: 757-471-4205
www.pfa-architect.com

Drawing Title	FIRE PROTECTION 2ND FLOOR PLAN
Building No.	20
Location	Huntington, WV

Project Title	Renovations to the Former BRAC Property
Project Architect:	PF&A
Checked by:	GL
Drawn by:	PD
Architects Proj. No.	2099.11

Date	09.03.2013
Project No.	581-12-101
FX1.02	
SHEET 109 OF 115	

