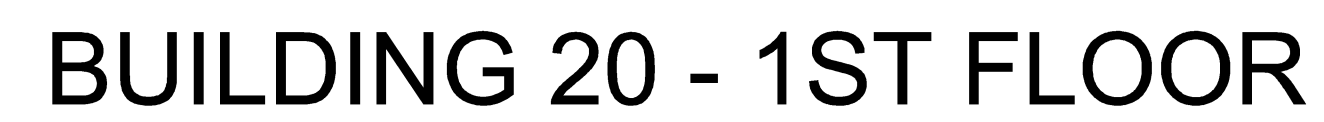


The physical location and a description of each Homogeneous Area can be found in the Asbestos Hazard Assessment Report.

The physical location and a description of each Homogeneous Area can be found in the Asbestos Hazard Assessment Report.

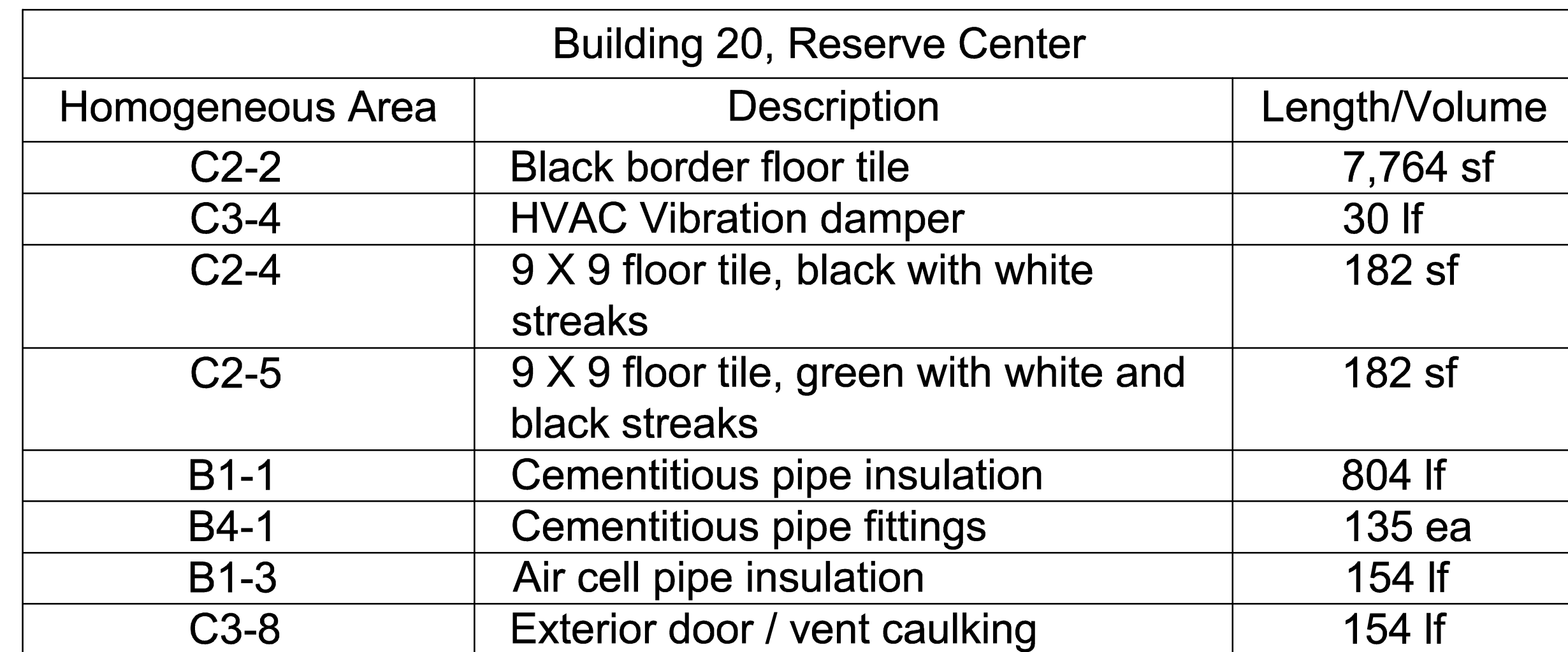


SCALE: 1/8" = 1'-0"

Building 20, Reserve Center		
Homogeneous Area	Description	Length/Volume
C2-2	Black border floor tile	7,764 sf
C3-4	HVAC Vibration damper	30 lf
C2-4	9 X 9 floor tile, black with white streaks	182 sf
C2-5	9 X 9 floor tile, green with white and black streaks	182 sf
B1-1	Cementitious pipe insulation	804 lf
B4-1	Cementitious pipe fittings	135 ea
B1-3	Air cell pipe insulation	154 lf
C3-8	Exterior door / vent caulking	154 lf

[illegible]

The physical location and a description of each Homogeneous Area can be found in the Asbestos Hazard Assessment Report.



SCALE: 1/8" = 1'-0"

**FINAL CD ISSUE
FULLY SPRINKLERED**

 Veterans Affairs

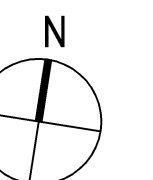
The physical location and a description of each Homogeneous Area can be found in the Asbestos Hazard Assessment Report.

The physical location and a description of each Homogeneous Area can be found in the Asbestos Hazard Assessment Report.



SCALE: 1/8" = 1'-0"

Building 19, Maintenance Garage		
Homogeneous Area	Description	Length/Volume
C3-2	Exterior door caulking	53 lf



**FINAL CD ISSUE
FULLY SPRINKLERED**

[illegible]

A three inches = one foot

B one and one-half inches = one foot

C one inch = one foot

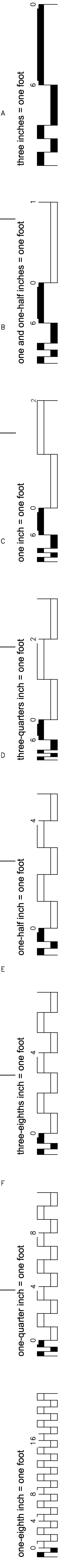
D three-quarters inch = one foot

E one-half inch = one foot

F three-eighths inch = one foot

one-quarter inch = one foot

one-eighth inch = one foot



A three inches = one foot

B one and one-half inches = one foot

C one inch = one foot

D three-quarters inch = one foot

E one-half inch = one foot

F three-eighths inch = one foot

one-quarter inch = one foot

one-eighth inch = one foot

A three inches = one foot

B one and one-half inches = one foot

C one inch = one foot

D three-quarters inch = one foot

E one-half inch = one foot

F three-eighths inch = one foot

one-quarter inch = one foot

one-eighth inch = one foot



A three inches = one foot

B one and one-half inches = one foot

C one inch = one foot

D three-quarters inch = one foot

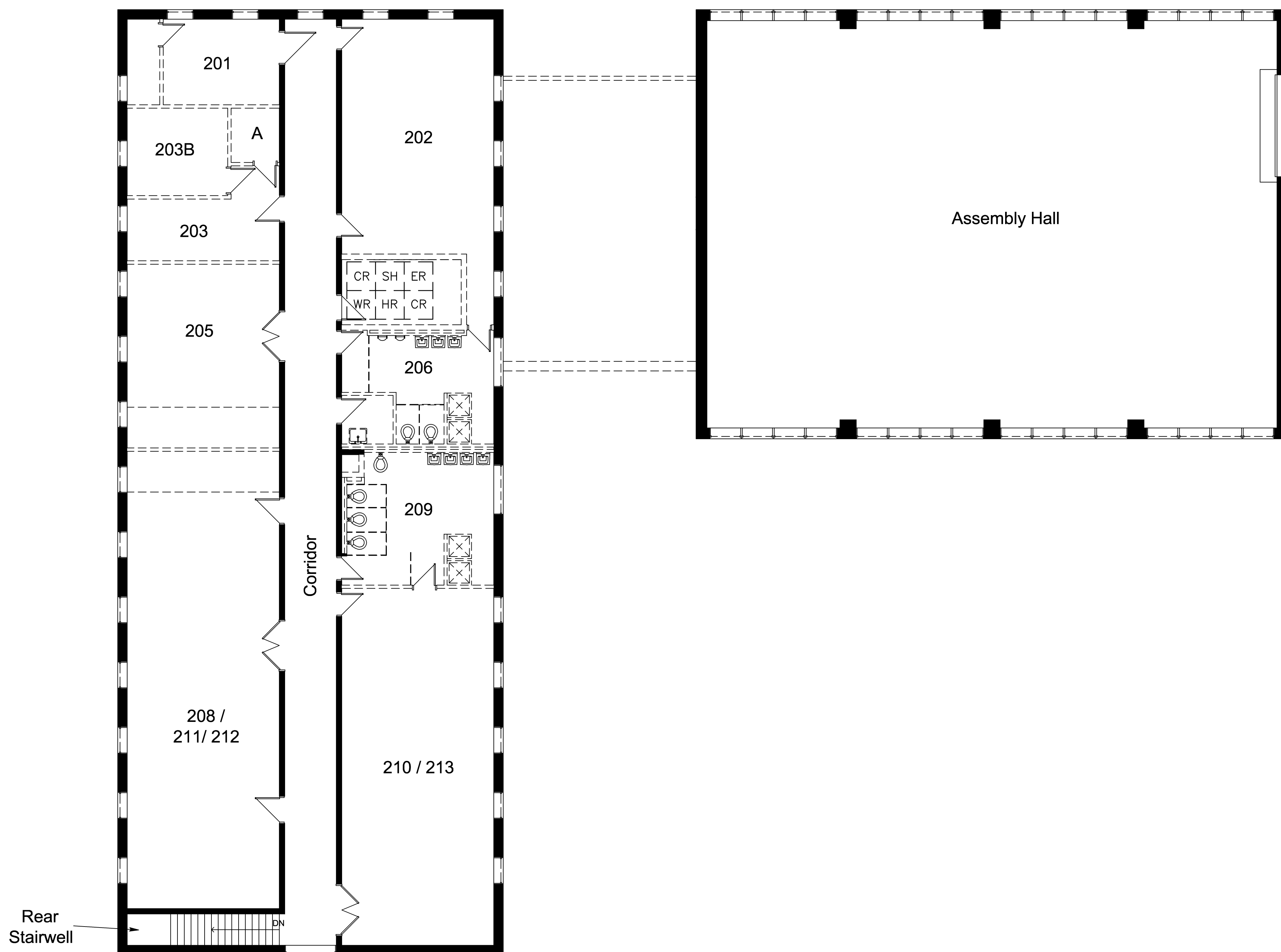
E one-half inch = one foot

F three-eighths inch = one foot

one-quarter inch = one foot

one-eighth inch = one foot

The physical location and a description of each Homogeneous Area can be found in the Asbestos Hazard Assessment Report.



SCALE: 1/8" = 1'-0"

1) Presentation of information is based on best available information. Drawings schematics were provided by Environmental Solutions Group. Utilized the schematics for purposes of identifying rooms that contain Asbestos Containing Materials.

2) Project #581-12-101 involves asbestos inspections located in the building. These Drawings are not to be considered to scale and are intended to be used for orientation purposes only and identifying the location of work.

ER - Equipment Room

SH - Shower

CR - Personnel Decon

WR - Wash Room

HR - Holding Room

Specific Notes:

1) Asbestos Pipe insulation may exist within wall cavities, specifically on the areas noted perimeter wall domestic water lines.

2) Asbestos Pipe insulation may exist within wall cavities, specifically on the bathroom domestic water lines. wall block demo, would be needed to access materials. All wall demo would need to be done under asbestos containment and controlled environments to avoid any threat of major asbestos fiber release.

3) Abatement Contractor is responsible for providing asbestos air monitoring through a sub-contract with an industrial Hygiene Firm as described on page 5 of specifications.

Scope Specific Notes:

1. Glovebag removal of asbestos pipe insulation and miscellaneous friable asbestos using industry standard removal methods.

2. Gross removal of asbestos floor tile using approved method. Any

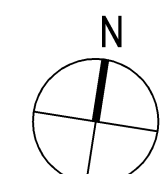
use of power tool tile removal equipment must be approved by VPIH.

3. Personnel can utilize three stage decons when performing work in mini enclosures.

4. Utilize existing electric; Provide GFCI protection.

5. Water sources for work areas are available in the bathrooms and Janitor's closets.

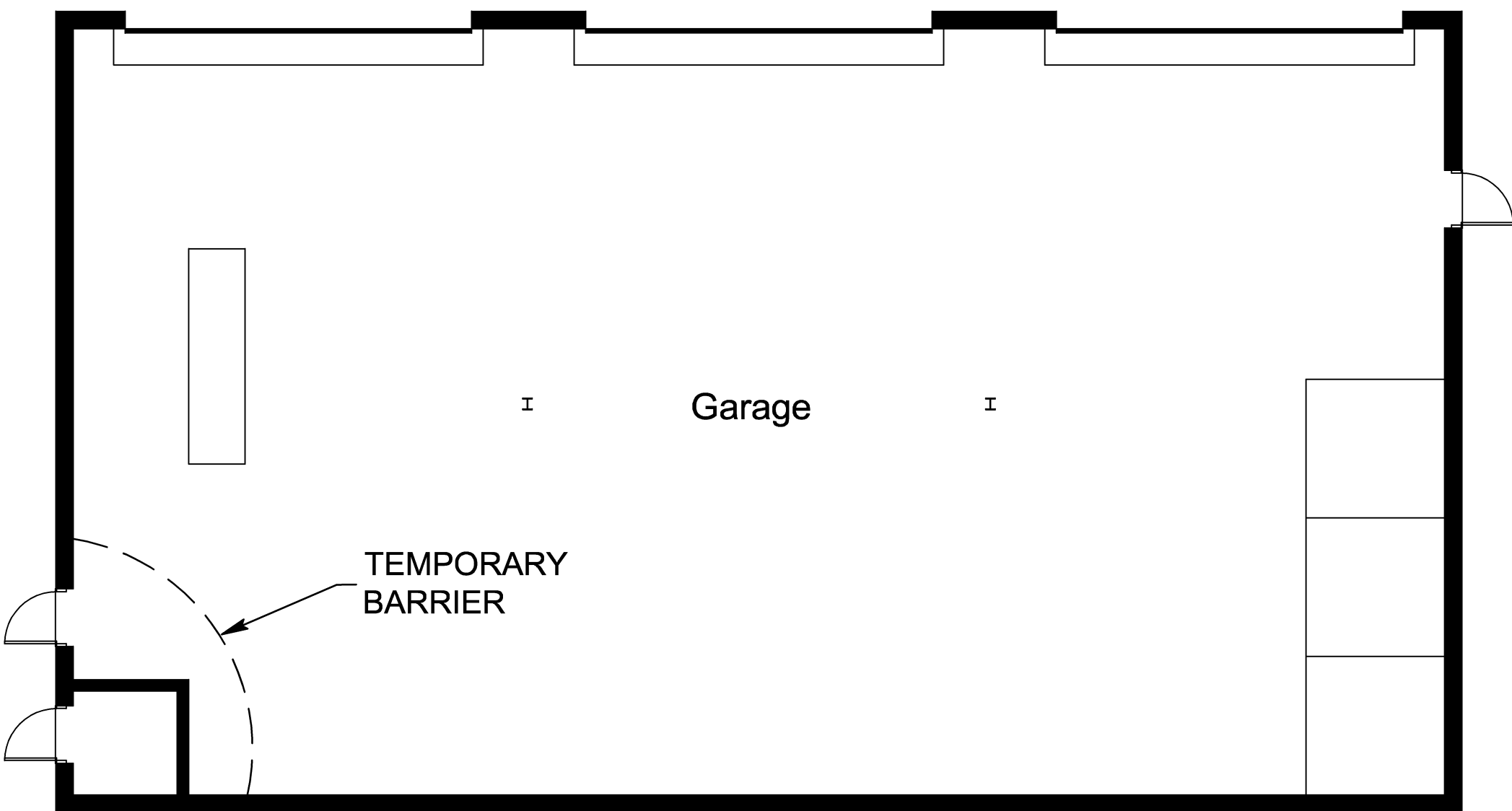
6. Exhaust through operable windows to the Exterior.



**FINAL CD ISSUE
FULLY SPRINKLERED**

[illegible]

The physical location and a description of each Homogeneous Area can be found in the Asbestos Hazard Assessment Report.



SCALE: 1/8" = 1'-0"

1) Presentation of information is based on best available information. Drawings schematics were provided by Environmental Solutions Group. Utilized the schematics for purposes of identifying rooms that contain Asbestos Containing Materials.

2) Project #581-12-101 involves asbestos inspections located in the building. These Drawings are not to be considered to scale and are intended to be used for orientation purposes only and identifying the location of work.

SH - Shower

CR - Personnel Decon

WR - Wash Room

HR - Holding Room

1) Asbestos Pipe insulation may exist within wall cavities, specifically on the areas noted perimeter wall domestic water lines.

2) Asbestos Pipe insulation may exist within wall cavities, specifically on the bathroom domestic water lines. wall block demo, would be

needed to access materials. All wall demo would need to be done under asbestos containment and controlled environments to avoid any threat of major asbestos fiber release.

3) Abatement Contractor is responsible for providing asbestos air monitoring through a sub-contract with an industrial Hygiene Firm as described on page 5 of specifications.

1. Glovebag removal of asbestos pipe insulation and miscellaneous friable asbestos using industry standard removal methods.

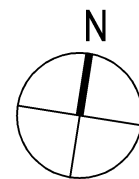
2. Gross removal of asbestos floor tile using approved method. Any use of power tool tile removal equipment must be approved by VPIH.

3. Personnel can utilize three stage decons when performing work in mini enclosures.

4. Utilize existing electric; Provide GFCI protection.

5. Water sources for work areas are available in the bathrooms and Janitor's closets.

6. Exhaust through operable windows to the Exterior.



**FINAL CD ISSUE
FULLY SPRINKLERED**

[illegible]