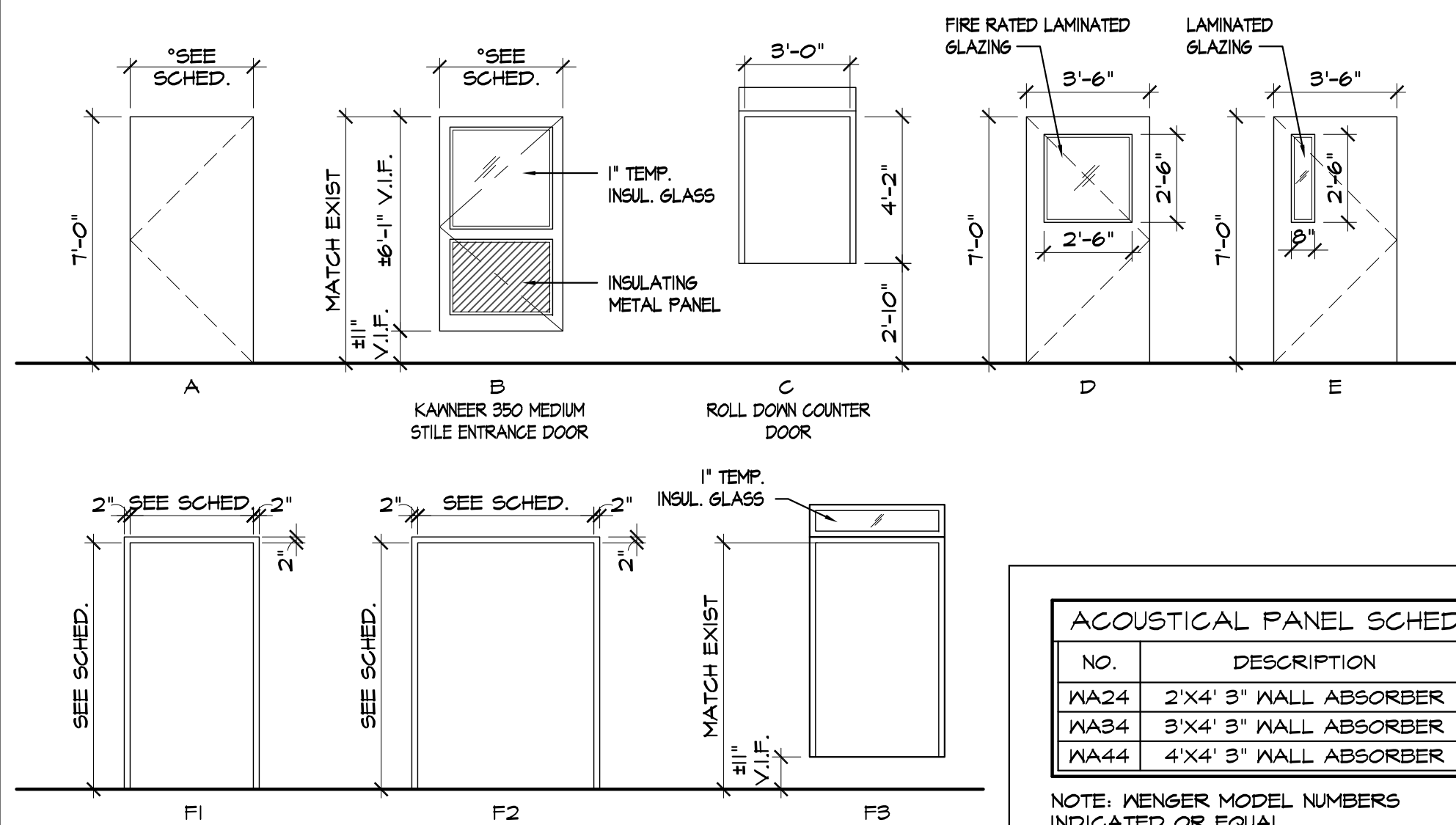


DOOR SCHEDULE											
LOCATION	DOOR	WIDTH	HEIGHT	THK	TYPE	MATERIAL	FINISH	FRAME	TYPE	MATERIAL	FINISH
307A MULTI-PURPOSE RM/EXT	3'-0" x 6'-11 1/2"	3'-0"	6'-11 1/2"	1 3/4"	B	ALUM.	MILL	FB	ALUM.	-	1
307B KITCHEN	3'-0" x 7'-0"	3'-0"	7'-0"	1 3/4"	A	S.C. WOOD	MFR	FI	H.M.	P-2	2
307C SMALL GROUP RM	3'-6" x 7'-0"	3'-6"	7'-0"	1 3/4"	E	S.C. WOOD	MFR	FI	H.M.	P-2	3
307D CHAIR/TABLE STORAGE	4'-0" x 7'-0"	4'-0"	7'-0"	1 3/4"	A	S.C. WOOD	MFR	FI	H.M.	P-2	4
307E KITCHEN	3'-0" x 4'-2"	3'-0"	4'-2"	-	C	STAINLESS	S.S.	-	S.S.	S.S.	5
307F ENTRY	4'-0" x 7'-0"	4'-0"	7'-0"	1 3/4"	D	S.C. WOOD	MFR	FI	H.M.	P-2	6
307G ENTRY	3'-0" x 7'-0"	3'-0"	7'-0"	1 3/4"	D	S.C. WOOD	MFR	FI	H.M.	P-2	7
307H CHAIR/TABLE STORAGE	12'-2 1/2" x 6'-11 1/2"	12'-2 1/2"	6'-11 1/2"	1 3/4"	A	S.C. WOOD	MFR	F2	H.M.	P-2	8

- DOOR HARDWARE SETS:
- ALL HARDWARE IS AS SPECIFIED OR CAN BE SUBSTITUTED WITH EQUAL PRODUCTS APPROVED BY VA/ARCHITECT.
  - CONFIRM ALL LATCHSET OPERATION DEVICES WITH VA PRIOR TO ORDERING OF HARDWARE.
  - EXISTING CORES WILL NEED TO BE CHANGED. COORDINATE KEYING WITH A NEW SUB-MASTER AND THE EXISTING BUILDING MASTER.
  - CONTRACTOR TO PROVIDE CYLINDER AND LOCKSET, VA TO PROVIDE KEYS AND CORES. COORDINATE WITH VA.
  - \* INDICATES 'C' RATED CONSTRUCTION. NO RATINGS REQUIRED.

DOOR SCHEDULE LEGEND			
ALUM.	ALUMINUM		
GL.	GLASS		
H.M.	HOLLOW METAL		
S.C. WOOD	SOLID CORE WOOD		
S.S.	STAINLESS STEEL		
MFR	MANUFACTURER		

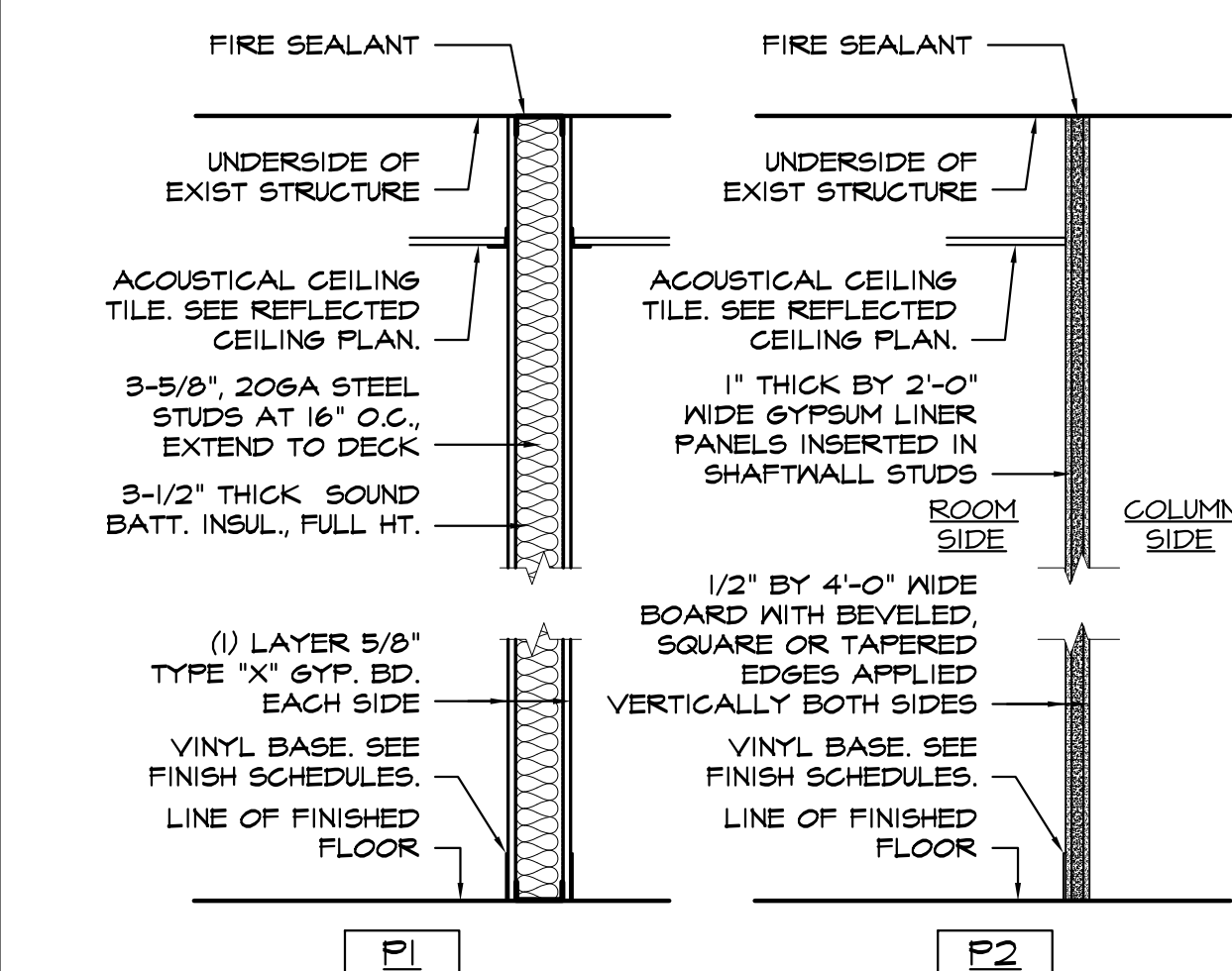


C-1 DOOR SCHEDULE & TYPES

NO.	DESCRIPTION	QTY
MA24	2'x4' 3" WALL ABSORBER	12
MA34	3'x4' 3" WALL ABSORBER	4
MA44	4'x4' 3" WALL ABSORBER	2

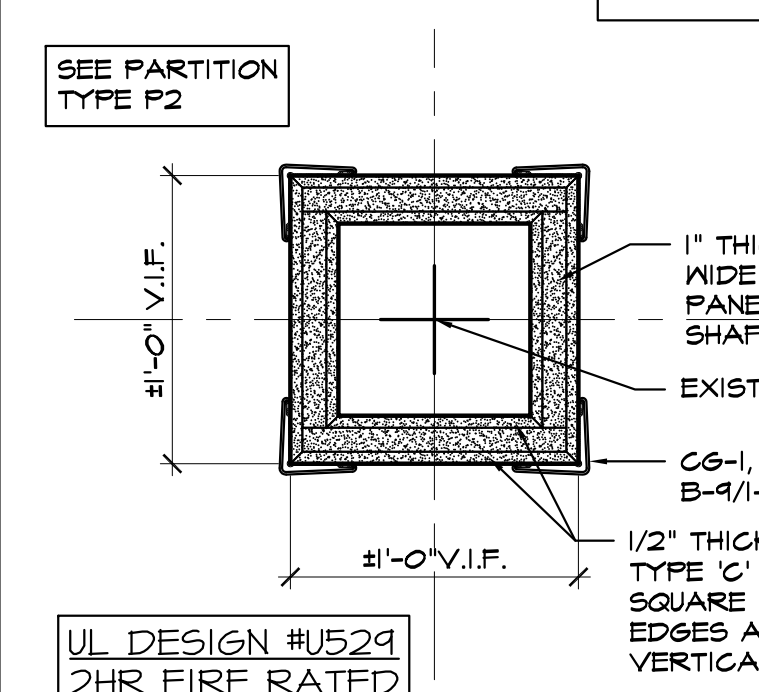
NOTE: MENGER MODEL NUMBERS INDICATED OR EQUAL.

C-2 ACOUSTICAL PANEL SCHEDULE



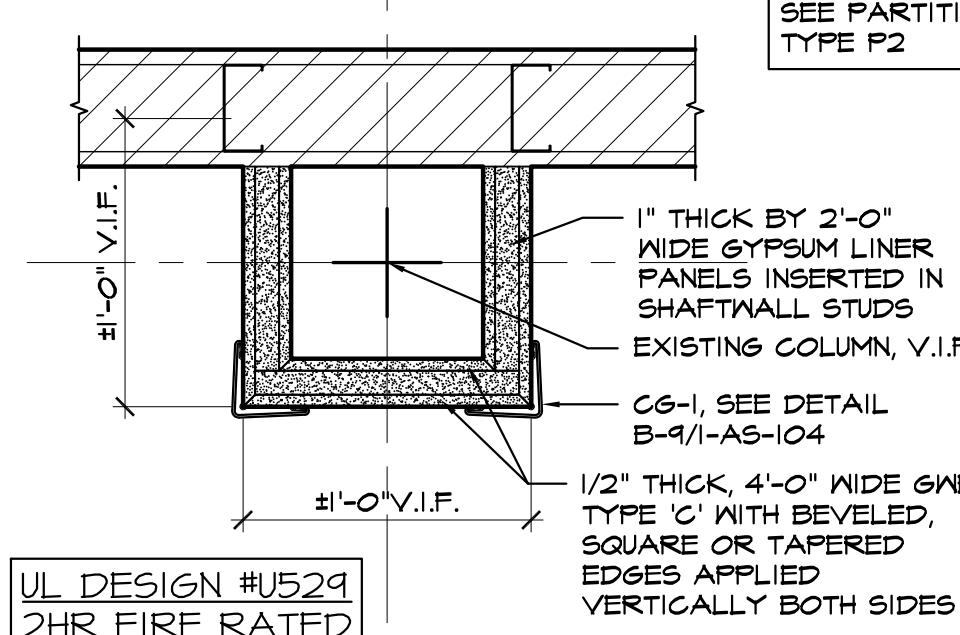
C-1 PARTITION TYPES

NTS



F-1 RATED COLUMN ENCLOSURE

NOTE: ALTERNATE FIREPROOFING CONTRACTOR TO COORD. WITH VA C.O.R. AFTER DEMOLITION OF EXIST. COLUMN WRAPS. ALTERNATE SPRAY FIREPROOFING MAY BE REQUIRED (2HR) WITH GYP BD AND MTL STUD ENCLOSURE.

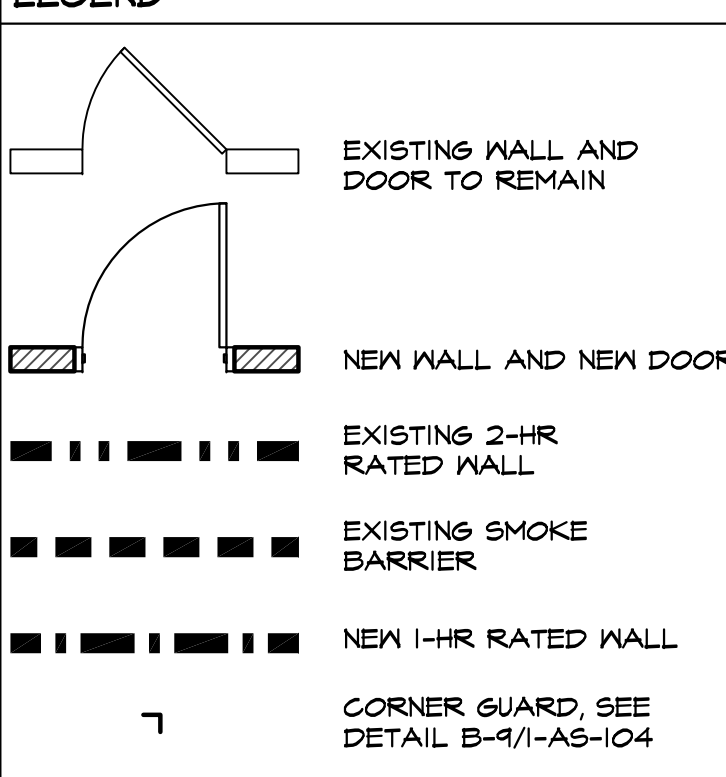


F-2 RATED COLUMN ENCLOSURE

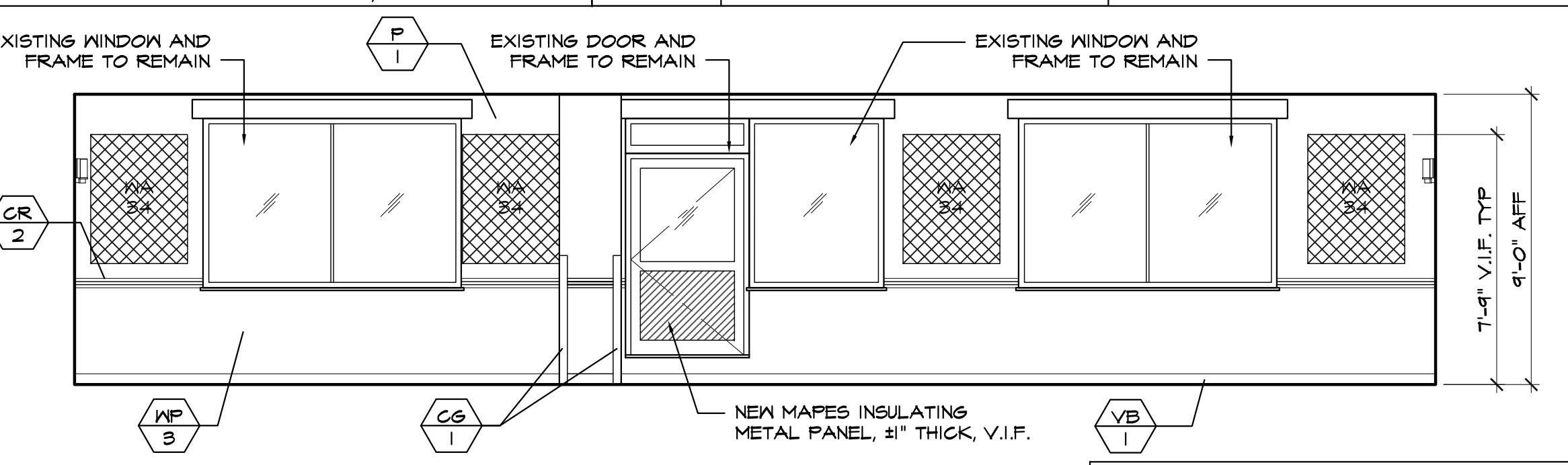
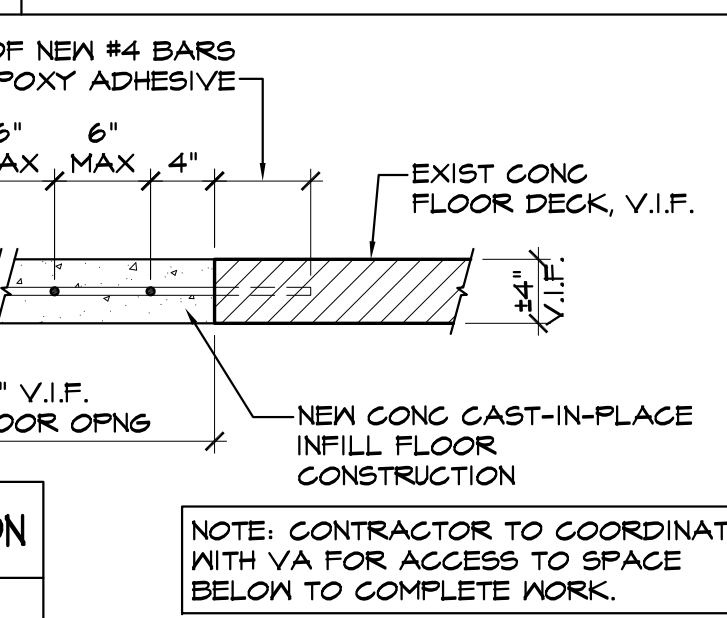
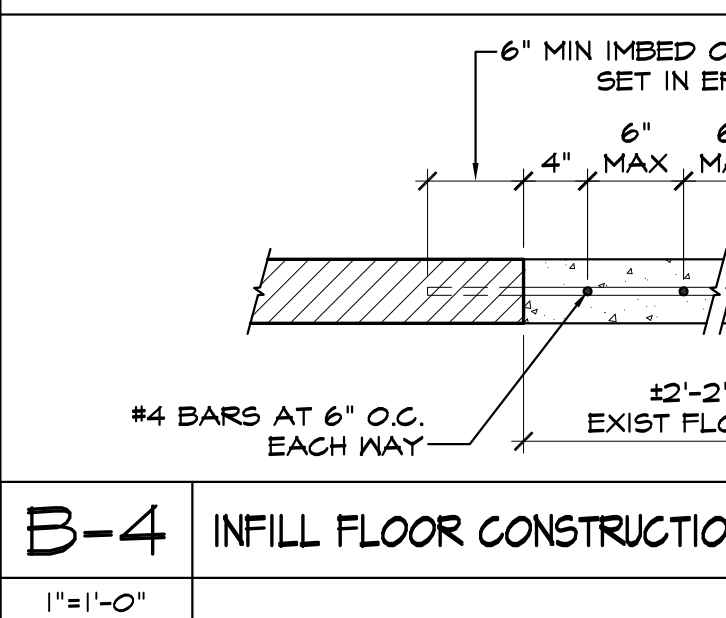
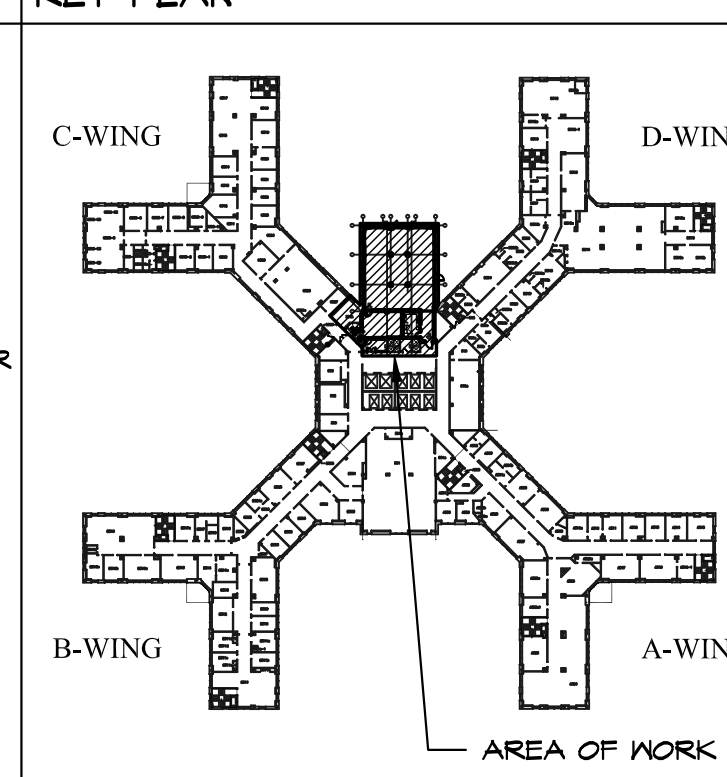
CONSULTANTS:

- HARDWARE SCHEDULE
- LOCKSET, BEST 48K7D15D53-626 DOOR CLOSER, LCN 4041 XP (3) BUTT HINGES
  - LOCKSET, BEST 48K7D15D53-626 DOOR CLOSER, LCN 4041 XP W/SPRING HUSH ARM WITH T-HANDLE HOLD OPEN KICK PLATE, KYDEX, .080" MIN THICK, 36" HIGH, SCREEN ON (3) BUTT HINGES
  - EXIT DEVICE, SARGENT 4840 SERIES W/FUNCTION 63 AND TRIM - PTB CYLINDER TO ACCEPT "BEST" T-PIN INTERCHANGEABLE CORE (RIM EXIT DEVICE) DOOR CLOSER, LCN 4041 XP W/SPRING HUSH ARM WITH T-HANDLE HOLD OPEN OVERHEAD STOP, NOT NEEDED KICK PLATE, KYDEX, .080" MIN THICK, 36" HIGH, SCREEN ON (4) HEAVY WEIGHT BUTT HINGES W/NON-REMOVABLE PIN
  - LOCKSET, BEST 48K7D15D53-626 DOOR CLOSER, LCN 4041 XP KICK PLATE, KYDEX, .080" MIN THICK, 36" HIGH, SCREEN ON (4) HEAVY WEIGHT BUTT HINGES
  - SLIDE BOLT
  - EXIT DEVICE, SARGENT 4840 SERIES W/FUNCTION 63 AND TRIM - PTB CYLINDER TO ACCEPT "BEST" T-PIN INTERCHANGEABLE CORE (RIM EXIT DEVICE) DOOR CLOSER, LCN 4041 XP W/SPRING HUSH ARM WITH T-HANDLE HOLD OPEN KICK PLATE, KYDEX, .080" MIN THICK, 36" HIGH, SCREEN ON (4) HINGES W/NON-REMOVABLE PIN
  - EXIT DEVICE, SARGENT 4840 SERIES W/FUNCTION 63 AND TRIM - PTB CYLINDER TO ACCEPT "BEST" T-PIN INTERCHANGEABLE CORE (RIM EXIT DEVICE) DOOR CLOSER, LCN 4041 XP (4) HINGES W/NON-REMOVABLE PIN
  - FLUSH BOLT, ROCKWOOD COMBINATION FLUSH BOLT SET, 2845 DOOR COORDINATOR, DCI #612 RATED ASTRAL
  - BUTT HINGES
- \*NOTE: (2) DOOR CLOSURES AND ADDITIONAL COORDINATOR MAY BE NEEDED, V.I.F.

LEGEND

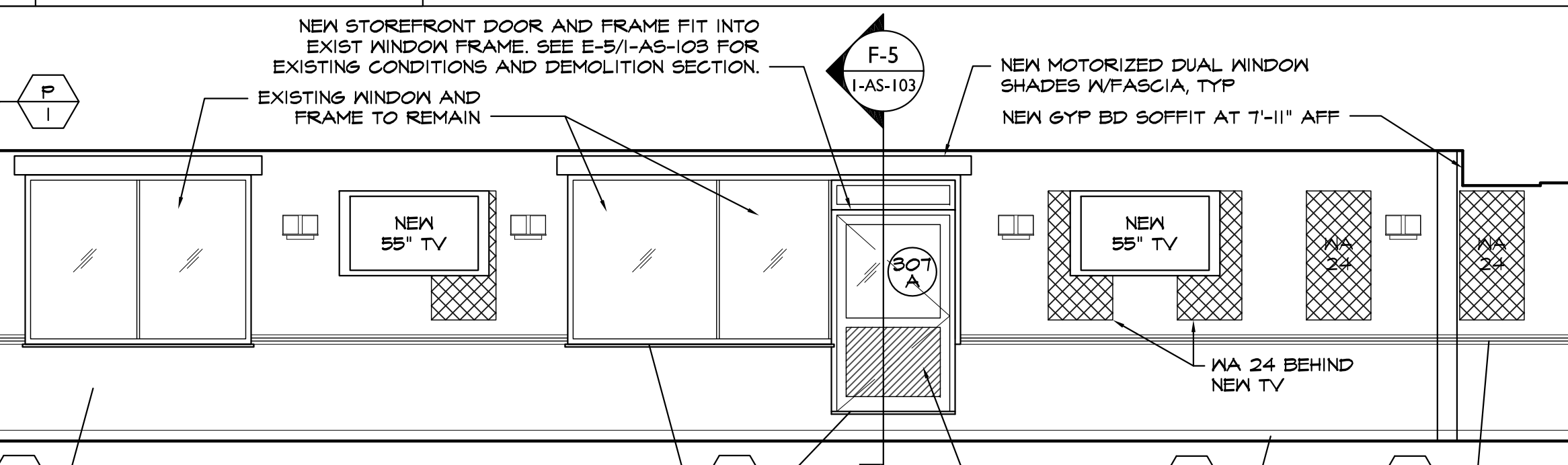


KEY PLAN



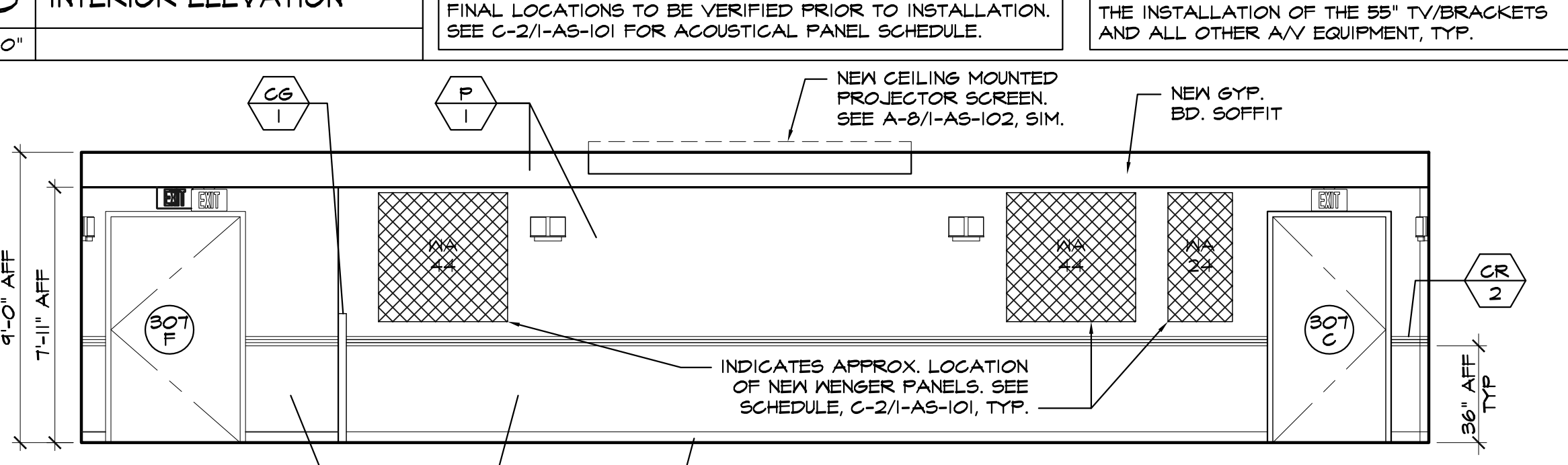
C-3 INTERIOR ELEVATION

NOTE: ACOUSTICAL PANEL LOCATIONS ARE APPROXIMATE. FINAL LOCATIONS TO BE VERIFIED PRIOR TO INSTALLATION. SEE C-2/1-AS-101 FOR ACOUSTICAL PANEL SCHEDULE.



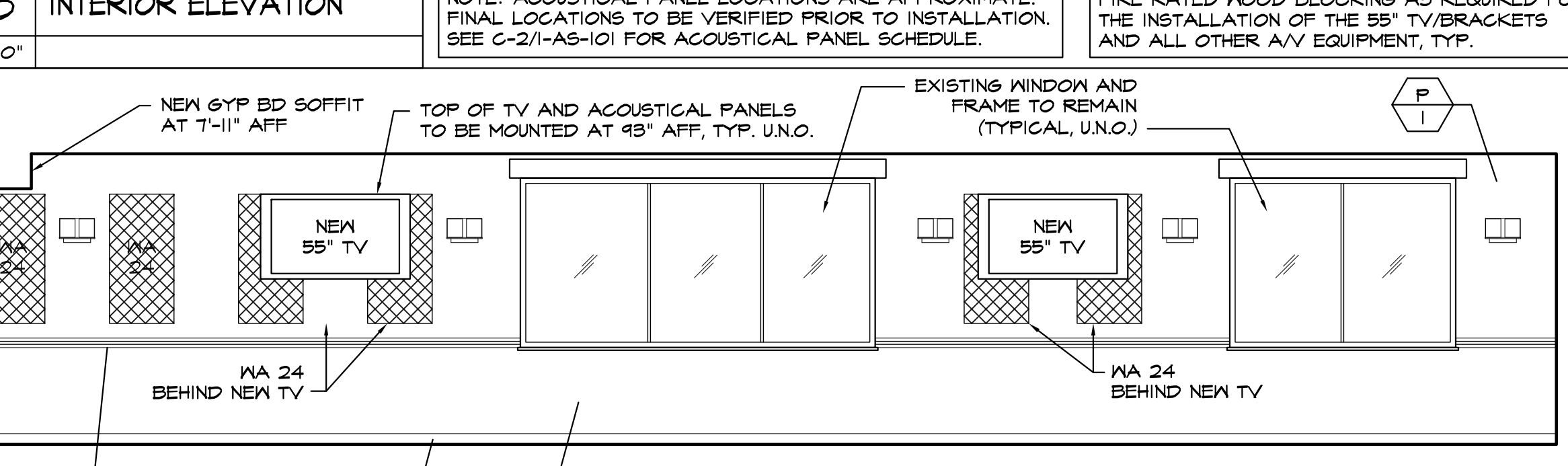
D-3 INTERIOR ELEVATION

NOTE: ACOUSTICAL PANEL LOCATIONS ARE APPROXIMATE. FINAL LOCATIONS TO BE VERIFIED PRIOR TO INSTALLATION. SEE C-2/1-AS-101 FOR ACOUSTICAL PANEL SCHEDULE.



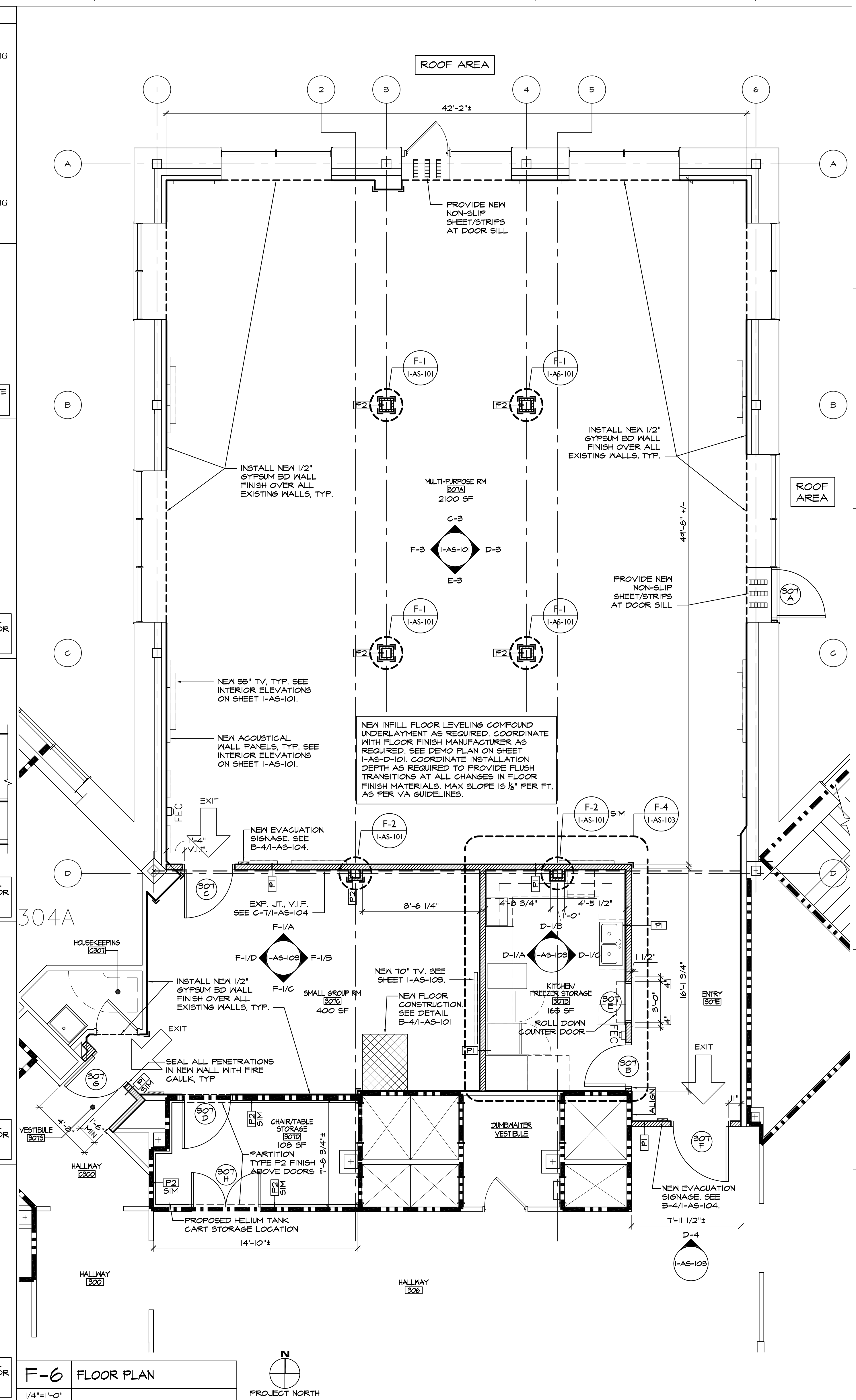
E-3 INTERIOR ELEVATION

NOTE: ACOUSTICAL PANEL LOCATIONS ARE APPROXIMATE. FINAL LOCATIONS TO BE VERIFIED PRIOR TO INSTALLATION. SEE C-2/1-AS-101 FOR ACOUSTICAL PANEL SCHEDULE.



F-3 INTERIOR ELEVATION

NOTE: ACOUSTICAL PANEL LOCATIONS ARE APPROXIMATE. FINAL LOCATIONS TO BE VERIFIED PRIOR TO INSTALLATION. SEE C-2/1-AS-101 FOR ACOUSTICAL PANEL SCHEDULE.



F-6 FLOOR PLAN

FLOOR PLAN  
INTERIOR ELEVATIONS  
DOOR SCHEDULE & TYPES

Project Title  
RENOVATE FOR AUDITORIUM  
STRATTON VA MEDICAL  
CENTER

Project Number  
528A8-11-801  
Building Number  
1  
Drawing Number  
1-AS-101  
Dwg. 8 of 24

Office of  
Construction  
and Facilities  
Management  
Department of  
Veterans Affairs