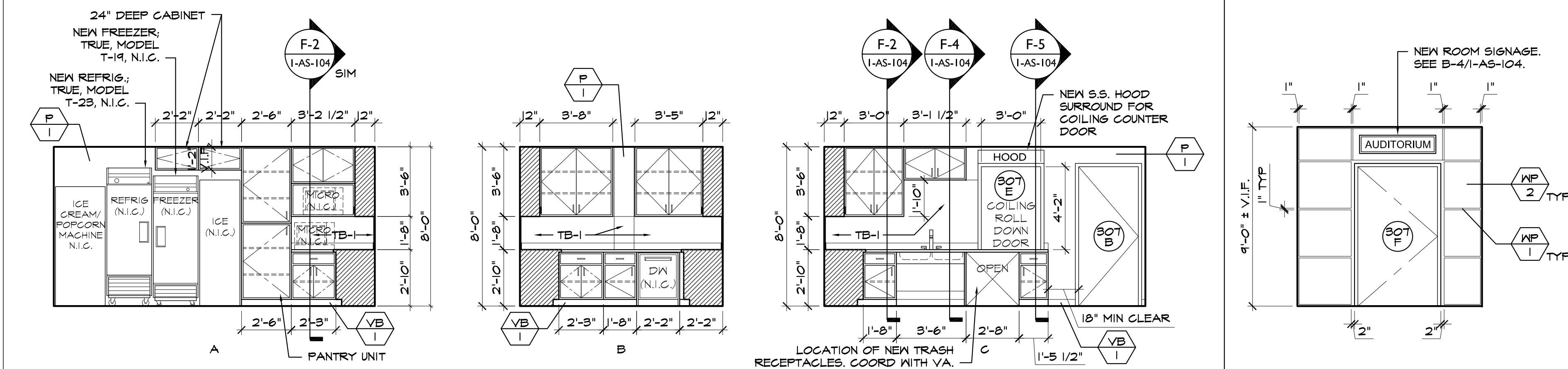
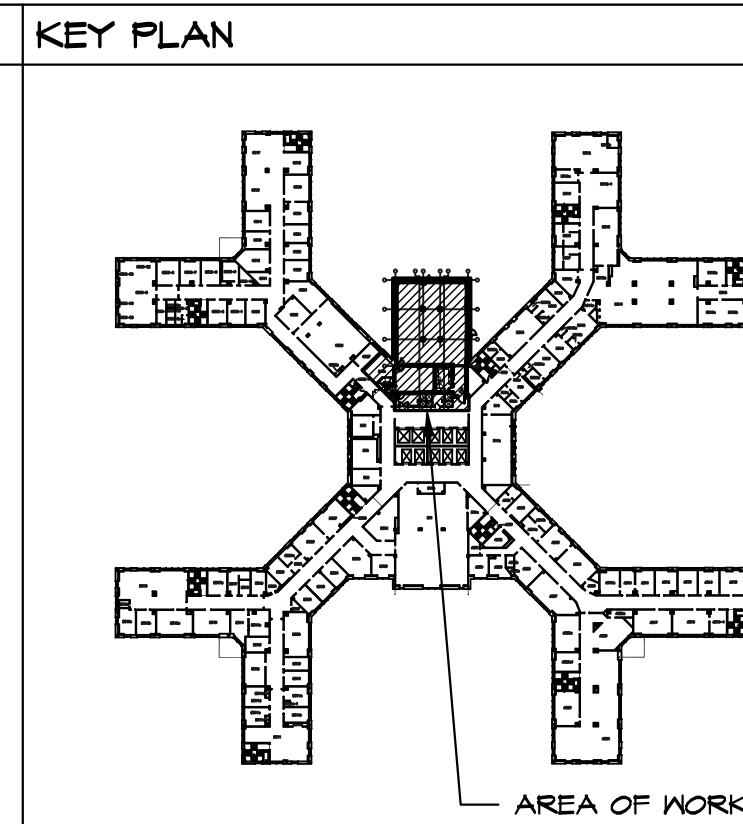
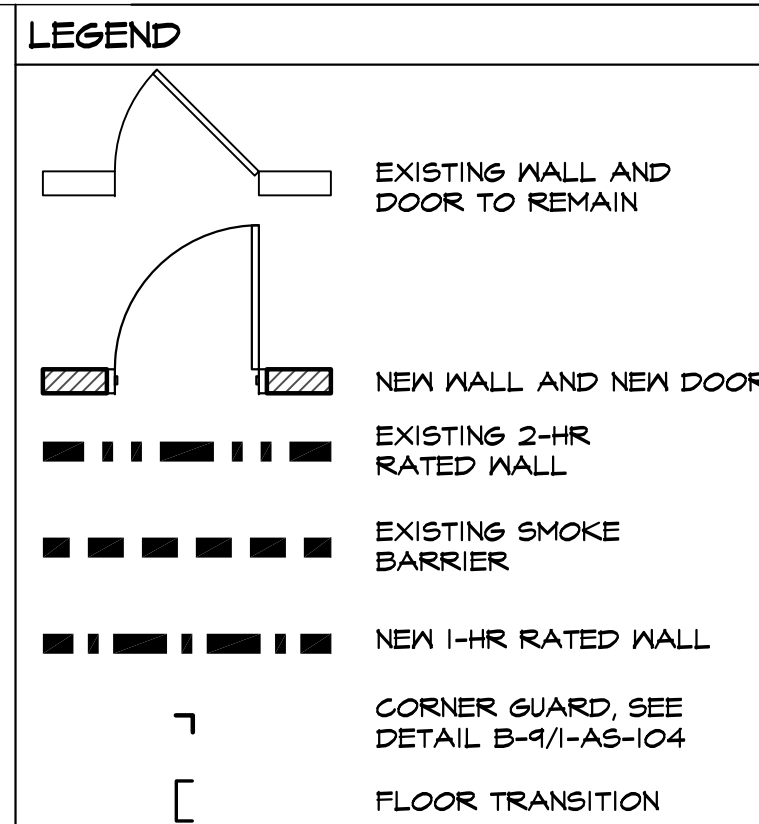


ROOM FINISH SCHEDULE										REMARKS
No.	NAME	FLOOR	MATL.	FINISH	BASE	MATL.	FINISH	MATL.	FINISH	
B07A	MULTI-PURPOSE	EXIST	VP-1/MM-1	VB-1	GNB	P-1	ACT-1	MFR/6YP		UNDERSIDE OF GYP BD SOFFIT TO BE P-5 FINISH
B07B	KITCHEN		VP-1	VB-1	GNB	P-1	ACT-2			8'-0" AFF
B07C	SMALL GROUP		VP-1	VB-1	GNB	P-1	ACT-1			8'-0" AFF
B07D	STORAGE		VP-1	VB-1	EXIST/GNB	P-4	ACT-2			8'-0" AFF
B07E	ENTRY		EXIST	EXIST	GNB	P-1	ACT-1			CEILING HEIGHT TO MATCH EXISTING HEIGHT, V.I.F.
B07S	VESTIBULE		VP-1	VB-1	EXIST/GNB	P-1	ACT-1			MATCH EXIST
C807	HOUSEKEEPING		EXIST	EXIST	EXIST	P-4	EXIST			EXIST

NOTE:  
1. REPAINT ALL EXISTING DOOR FRAMES (IN WORK AREA) P-2.  
2. ALL WALK-OFF MAT TO BE INSTALLED WITH LEE'S EVER SEAL ADHESIVE.

FINISH SCHEDULE						REMARKS
SYMBOL	ITEM	MANUFACTURER	DESCRIPTION	COLOR		
ACT-1	ACOUSTIC CEILING TILE	ARMSTRONG	2820 - CALLA	WHITE		24"x24"x1/8" SQUARE LAY-IN
ACT-2	ACOUSTIC CEILING TILE	ARMSTRONG	1718 - FINE FIGURED	WHITE		24"x24"x1/8" SQUARE LAY-IN
CR-1	CORNER GUARD	INPRO CORP.	ISOBN	0284 - TRUFFLE		3" WING - SURFACE MOUNTED
CR-2	CHAIR RAIL	INPRO CORP.	CR2 - NORTHERN HARDWOODS	0284 - TRUFFLE		WOOD TO BE POPULAR WITH PAINTED FINISH (P-2)
DP-1	DOOR PROTECTION	INPRO CORP.	ITGO	0284 - TRUFFLE		FULL HEIGHT HIGH IMPACT DOOR FRAME GUARD
GR-1	GROUT	LATICRETE		34 - MUSHROOM		TO BE USED WITH TS-1
M-1	METAL CASEWORK	JAMESTOWN METAL PRODUCTS	P-SERIES INSET STEEL PAINTED CASEWORK	473 - SILVER GREY		ALTERNATE TO BE PAINTED P-2
P-1	PAINT	BENJAMIN MOORE	INTERIOR GRADE PAINT	1131 - AUTUMN LEAF		GENERAL WALLS, EGGSHELL FINISH
P-2	PAINT	BENJAMIN MOORE	INTERIOR GRADE PAINT	1128 - ADOBE BEIGE		H.M. DOOR & FRAMES, TRIM SURFACES
P-3	NOT USED	NOT USED	NOT USED	NOT USED		
P-4	PAINT	BENJAMIN MOORE	INTERIOR GRADE PAINT	1053 - SIERRA HILLS		WALLS, EGGSHELL FINISH
P-5	PAINT	BENJAMIN MOORE	INTERIOR GRADE PAINT	READY MIX WHITE		HARD CEILING & UNDERSIDE OF SOFFITS
SS-1	SOLID SURFACE	CORIAN		NIGHT SKY		WINDOW SILLS
SS-2	SOLID SURFACE	CORIAN		SONORA		COUNTERTOP & 4" BACKSPLASH
TB-1	TILE BACKSPLASH	DALTILE	GLASS MOSAIC TILE - CITY LIGHTS	CL6T - PARIS		TO BE USED WITH GR-1
TS-1	TACK STRIP	PETER PEPPER	CHERRY FINISH X/SULFORD OF MAINE FABRIC	065 - BRYCE CANYON		FABRIC TO BE 2850 - LIDO STYLE, LENGTHS AS NEEDED FROM 24" TO 46"
VB-1	VINYL WALL BASE	ROFFE	NORTHERN TIMBERS	020 - SPICY CHERRY		4" VINYL COVE WALL BASE
VP-1	VINYL PLANK FLOORING	ROFFE	NORTHERN TIMBERS	024 - GOLDEN OAK		4" X 36" VINYL WOOD PLANK
WA	ACOUSTICAL WALL PANELS	KENGER	WALL ABSORBER PANEL	423 - PLUMICE		FABRIC: SULLFORD OF MAINE 2100 FRT01
WM-1	WALK OFF MAT	LEE'S	FIRST STEP OR STEP UP	CHARCOAL GRAY		INSTALL QUARTER TURN PATTERN
WP-1	WALL PANEL	INPRO CORP.	304 - RIGID SHEET VINYL	0253 - CAMELBACK		030" THICK
WP-2	WALL PANEL	INPRO CORP.	PALLADIUM PANELS	0545 - CROWN CHERRY		FACTORY FINISHED EDGE
WP-3	WALL PANEL	INPRO CORP.	405N - RIGID SHEET VINYL	0545 - CROWN CHERRY		040" THICK MAINSCOT, RAILROADED GRAIN
WS-1	WINDOW SHADES	DRAPER	MOTORIZED FLEXSHADES	SEE NOTE #1		SEE NOTE #1

NOTE:  
1. WINDOW SHADES TO BE MOTORIZED FLEXSHADES WITH DUAL ROLLERS. SHADES TO BE BOTH SHEERWEAVE 5K2000 SERIES WITH 5% OPENNESS AND SUNBLOG 5B2000 BEHIND. FASCIA TO BE IVORY FINISH.

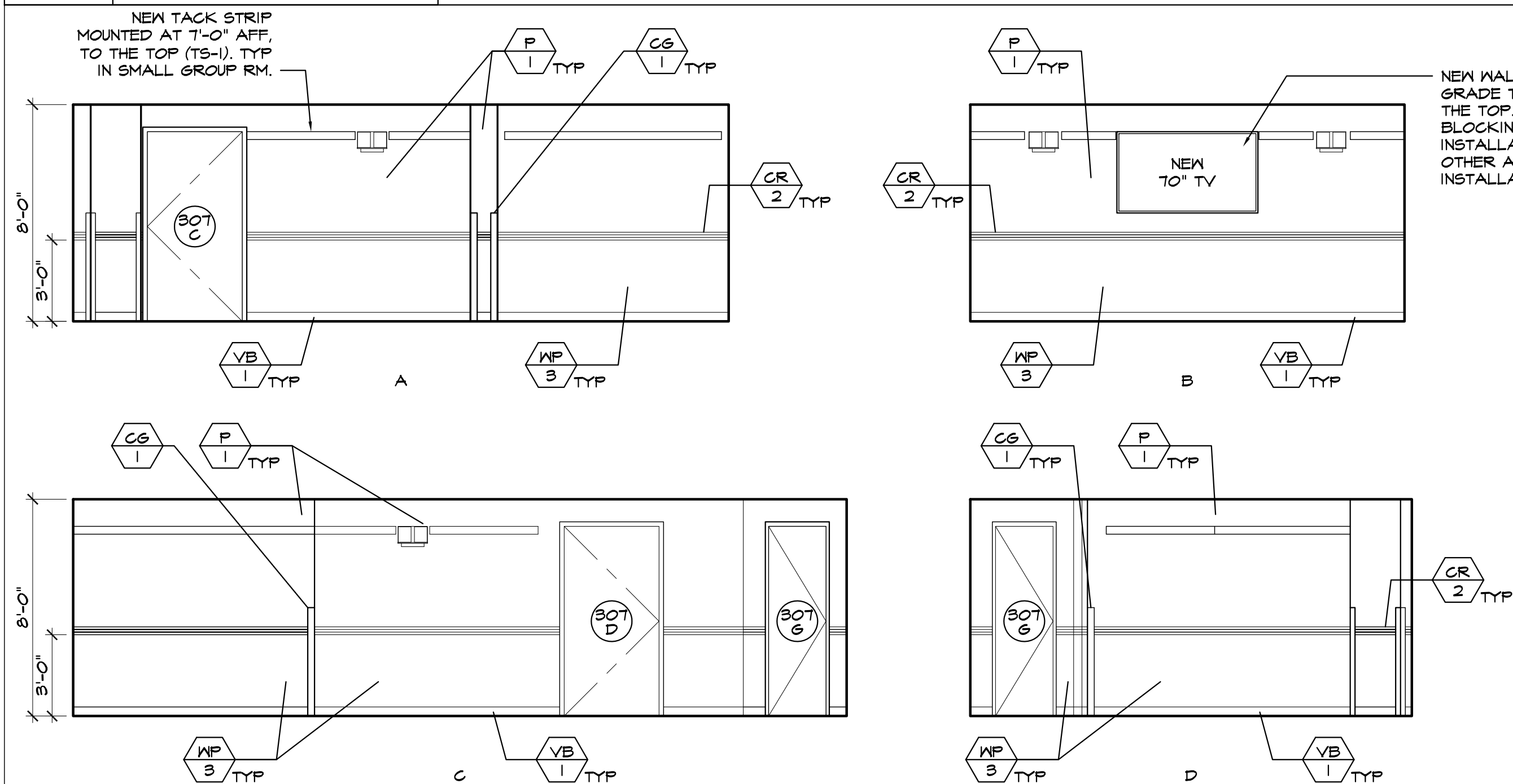


**D-1 INTERIOR ELEVATION**  
1/4" = 1'-0" AT KITCHEN/FREEZER STORAGE B07B

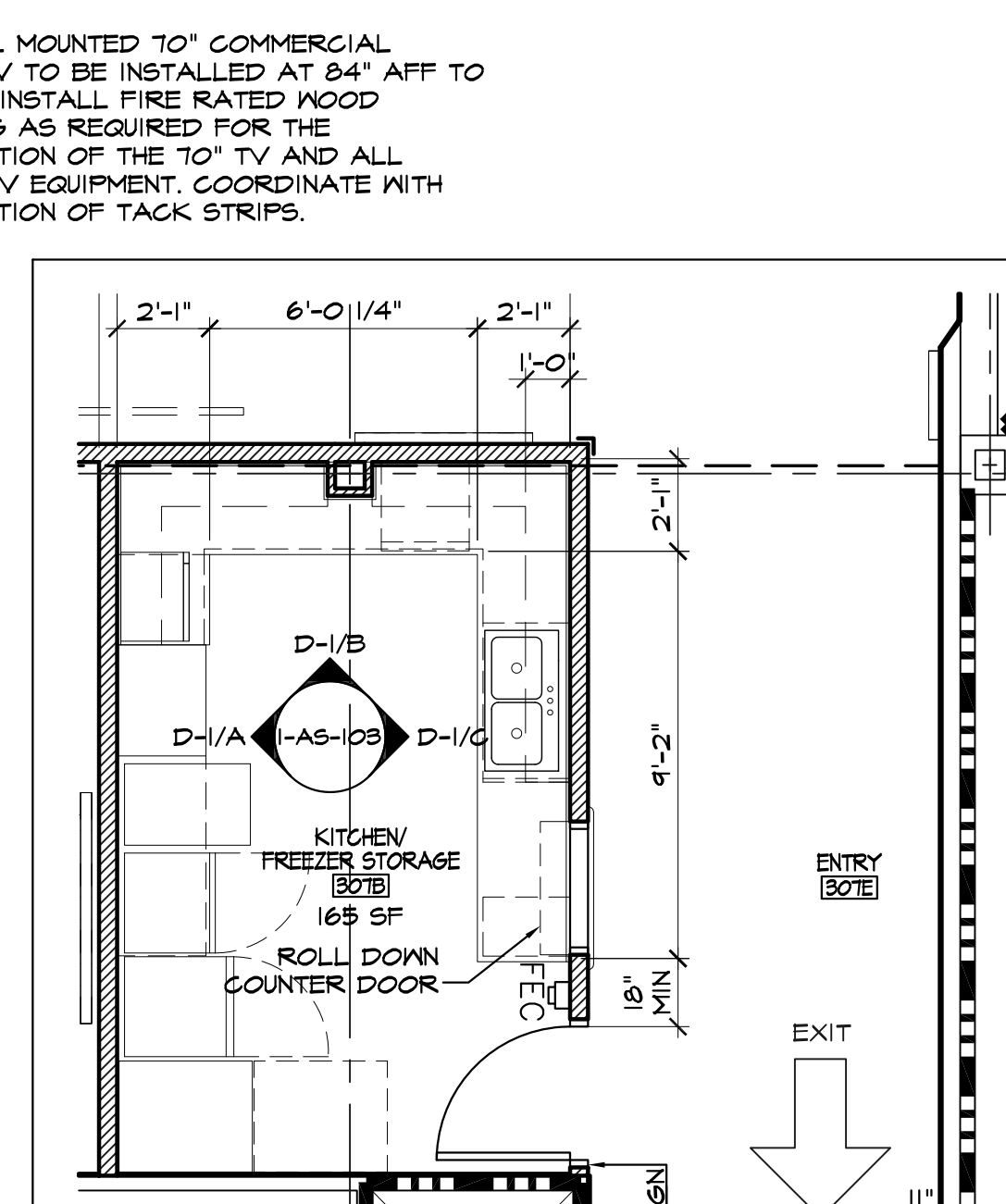
NOTE:  
ALL CABINETRY DOORS AND DRAWERS TO RECEIVE LOCKS (KEYED ALIKE).

NOTE:  
ALL CERAMIC TILE BACKSPLASH INSTALLATION TO FOLLOW TCA M244C-12. NO VAPOR RETARDER MEMBRANE OR WATERPROOF MEMBRANE REQUIRED. SEE D-4/1-AS-104 FOR DETAIL. SOFT CONTROL JOINTS AT EACH CORNER.

**D-4 INTERIOR ELEVATION**  
1/4" = 1'-0" AT ENTRY

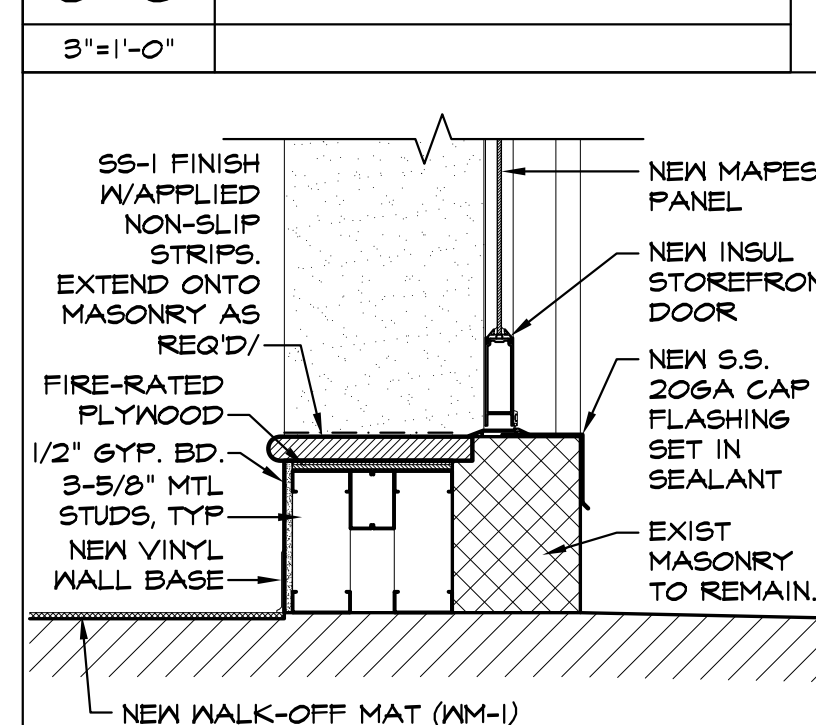


**F-1 INTERIOR ELEVATION**  
1/4" = 1'-0" AT SMALL GROUP RM B07C



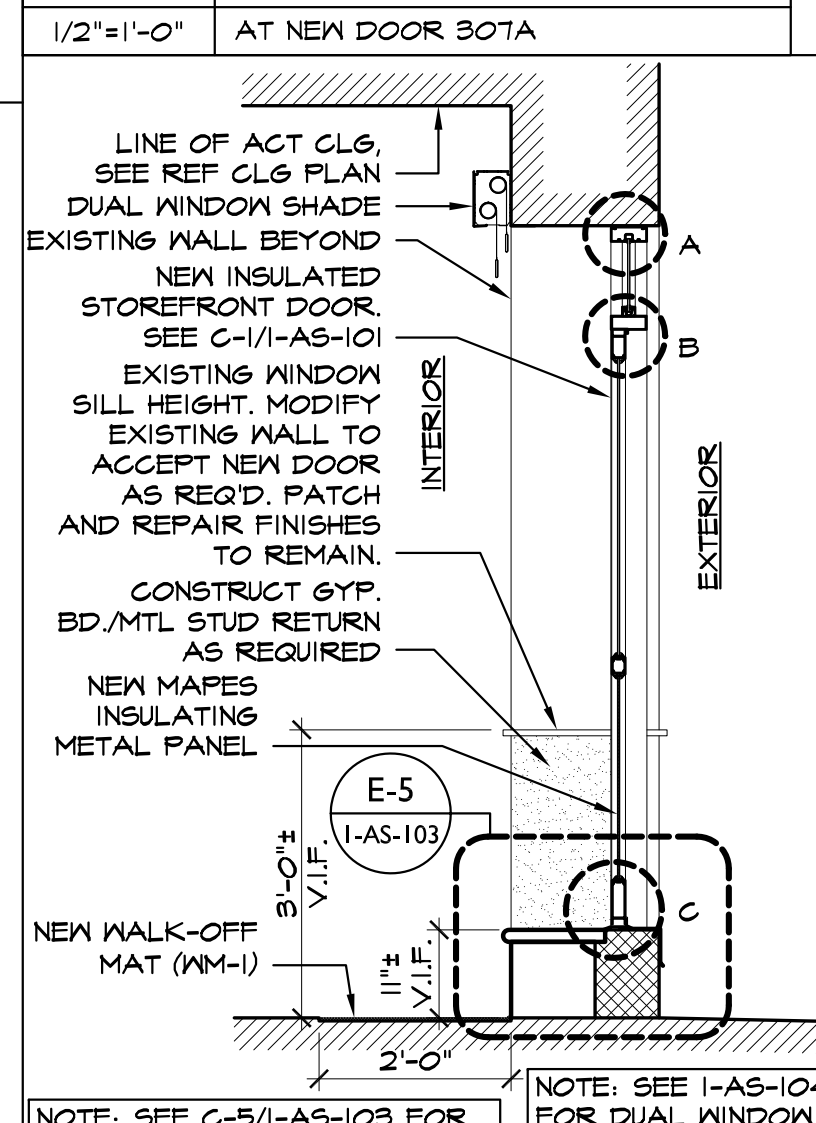
**F-4 KITCHEN FLOOR PLAN**  
1/4" = 1'-0"

**C-5 SECTION DETAILS**  
3" = 1'-0"

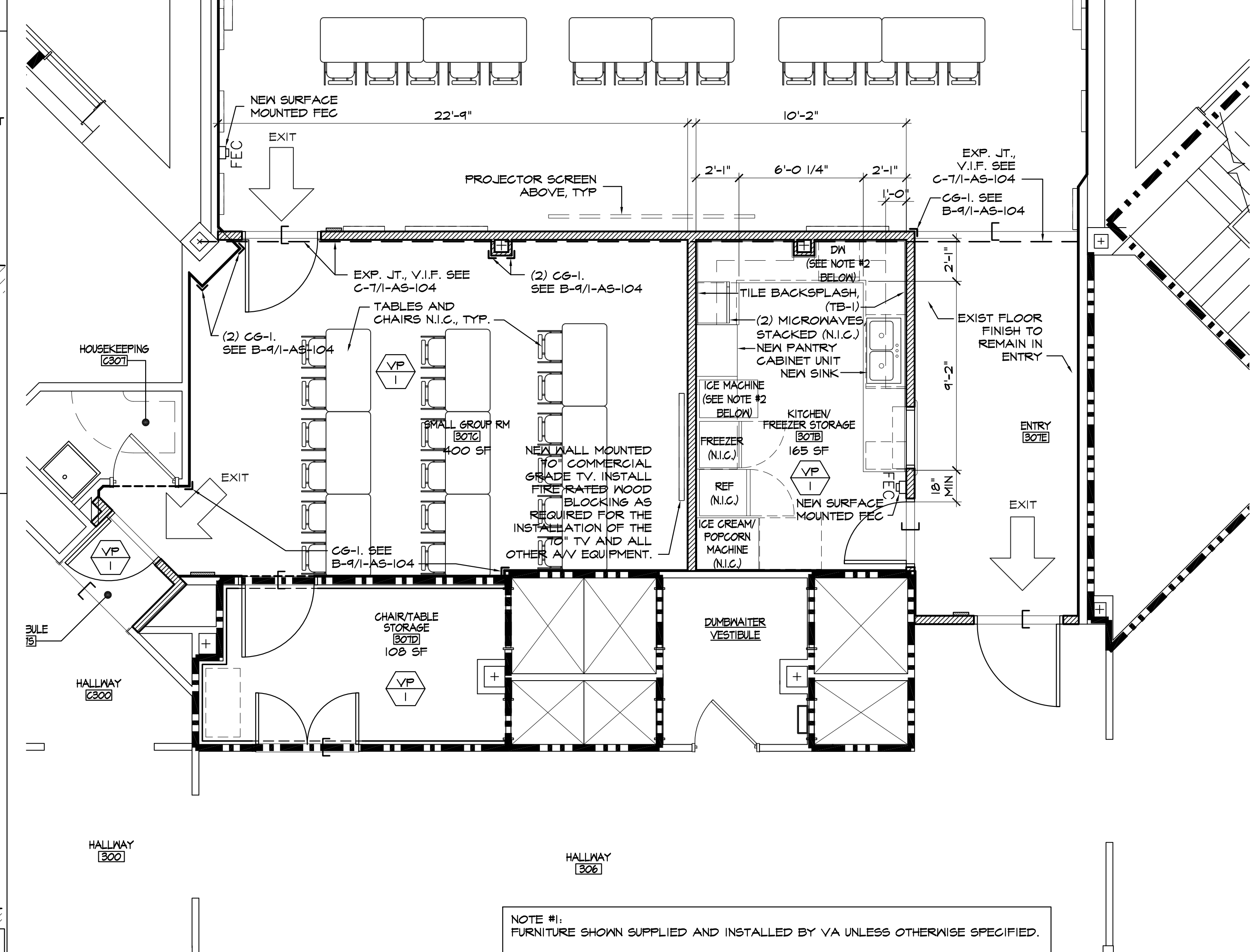


NOTE: CUT AND PATCH MASONRY AS REQUIRED FOR INSTALLATION OF NEW SILL.  
NOTE: ADAPT AND SCRIBE EXIST MASONRY TO REMAIN AS REQUIRED TO SUPPORT NEW DOOR/MATERIALS.

**E-5 DETAIL**  
1/2" = 1'-0" AT NEW DOOR B07A



**F-5 SECTION**  
1/2" = 1'-0" AT NEW DOOR B07A



**F-6 FINISH PLAN**  
1/4" = 1'-0"

**FLOOR FINISH PLAN  
ROOM AND FINISH SCHEDULES  
MILLWORK DETAILS**

Approved: Project Director

**RENOVATE FOR AUDITORIUM  
STRATTON VA MEDICAL  
CENTER**

Location  
V.A.M.C. ALBANY, NY

Date  
2/21/14

Checked  
Drawn

Project Number  
528AB-11-801

Building Number  
1

Drawing Number  
1-AS-103

Dwg. 10 of 24

Office of  
Construction  
and Facilities  
Management

Department of  
Veterans Affairs

**ARCHITECT/ENGINEERS:**

Liscum  
McCormack  
VanVoorhis LLP

181 Church Street  
Poughkeepsie, NY 12601  
PHONE 845-452-2248 FAX 845-452-3752

**FELENZER III  
ENGINEERING LLP**

12-197  
22 Mulberry St., Suite 2A,  
Middletown, NY 10940  
t 845-343-1481 fx 845-343-4886 t 845-454-9704 fx 855-320-8735  
UNAUTHORIZED ALTERATION OR ADDITION TO A PLAN BEARING A  
LICENSED PROFESSIONAL ENGINEER'S SEAL IS A VIOLATION OF  
STATE EDUCATION LAW

