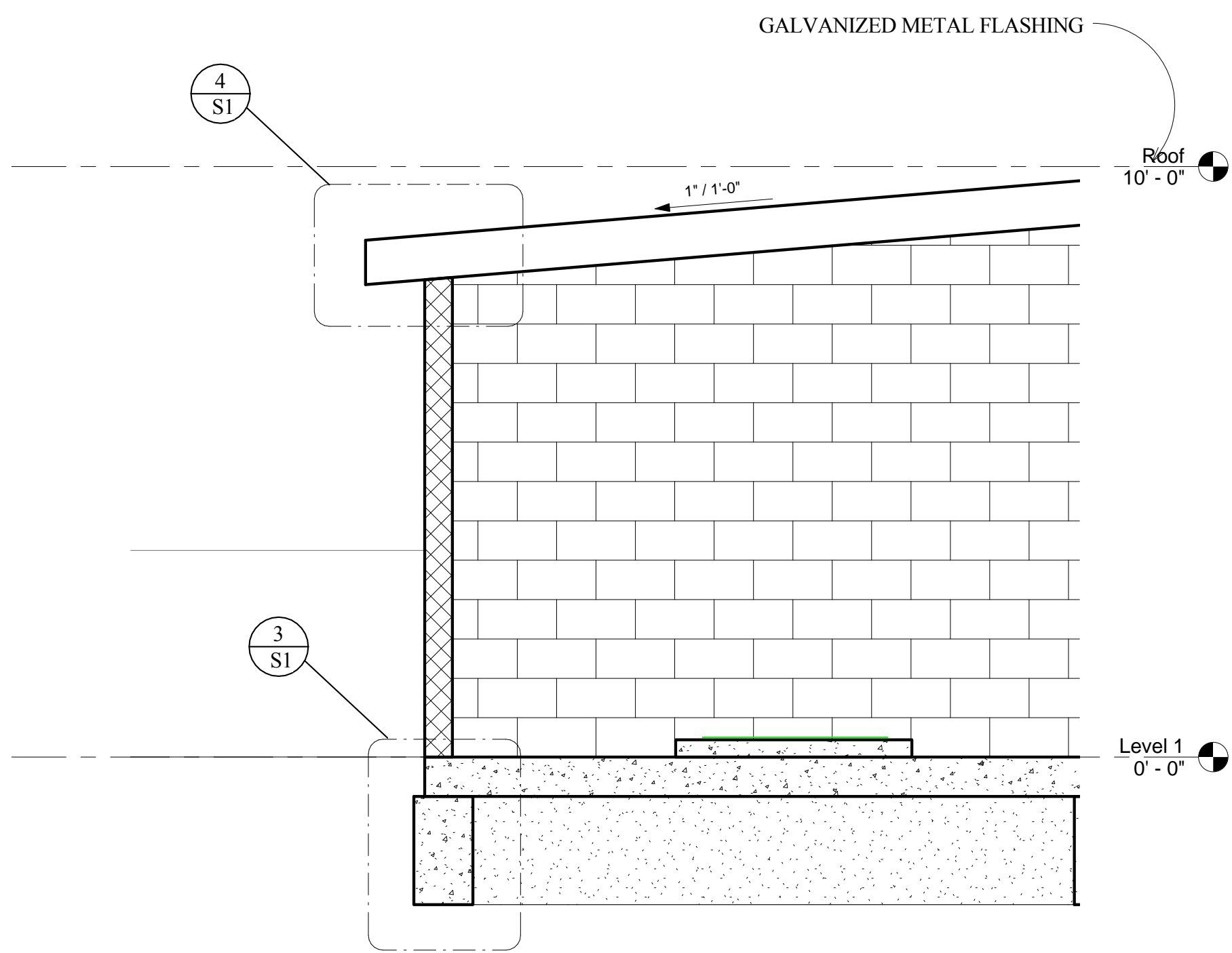
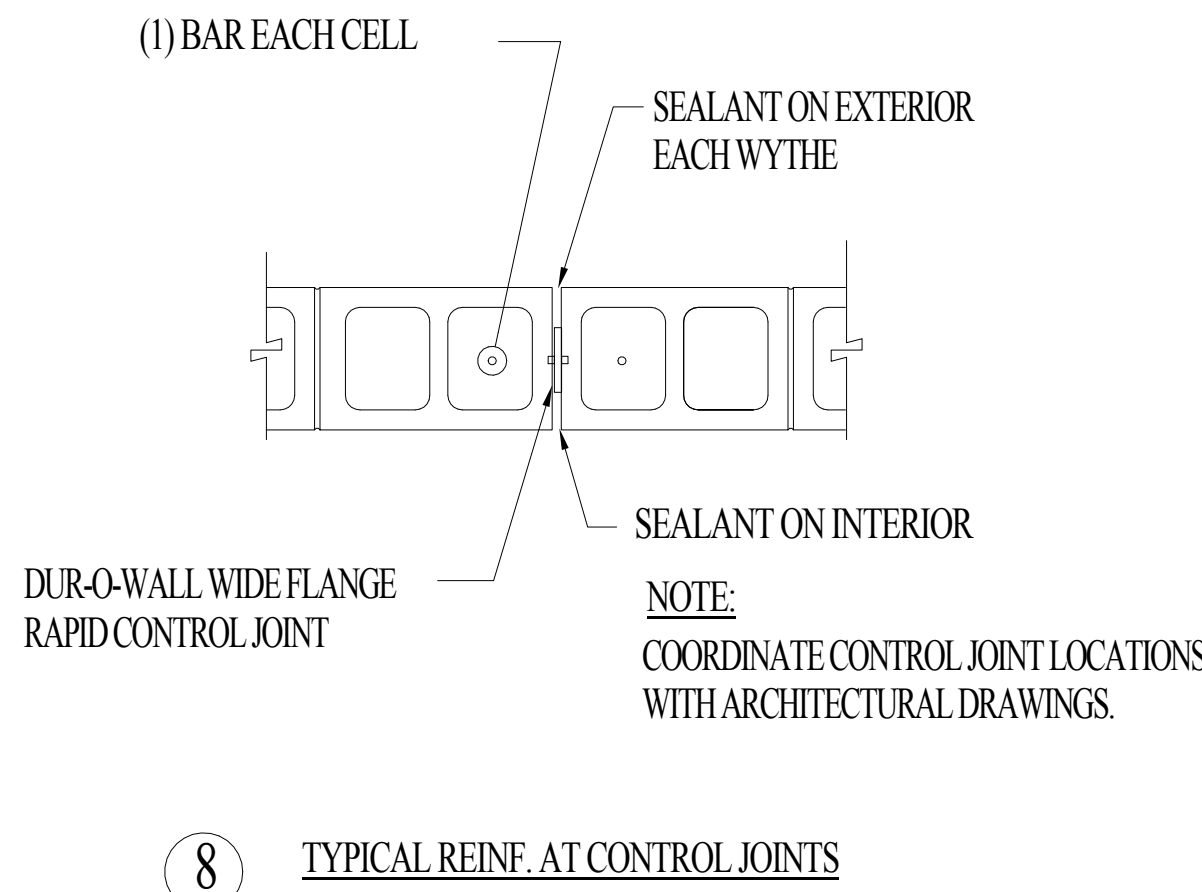
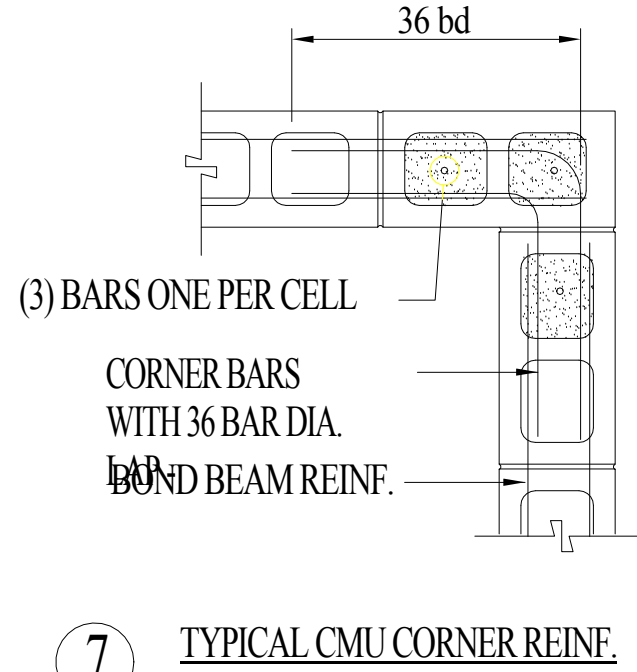
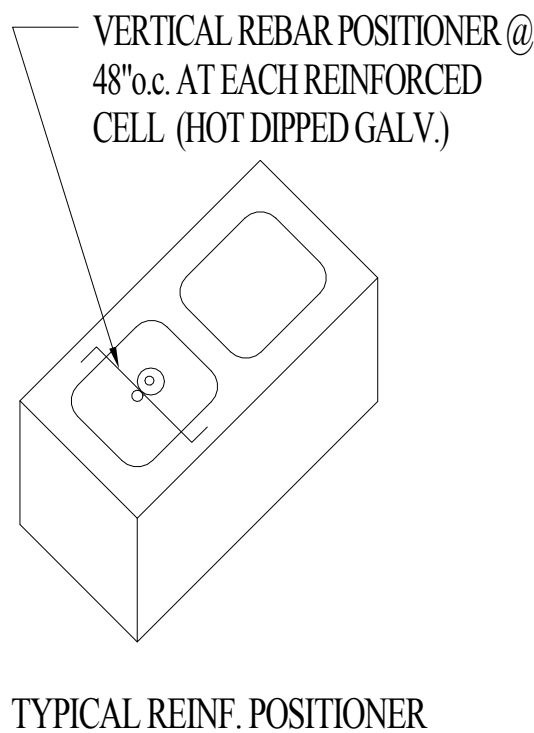
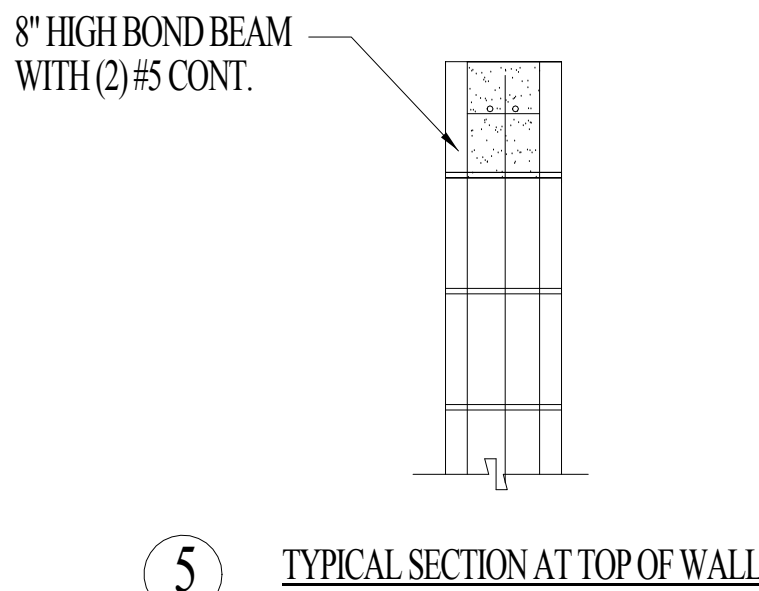
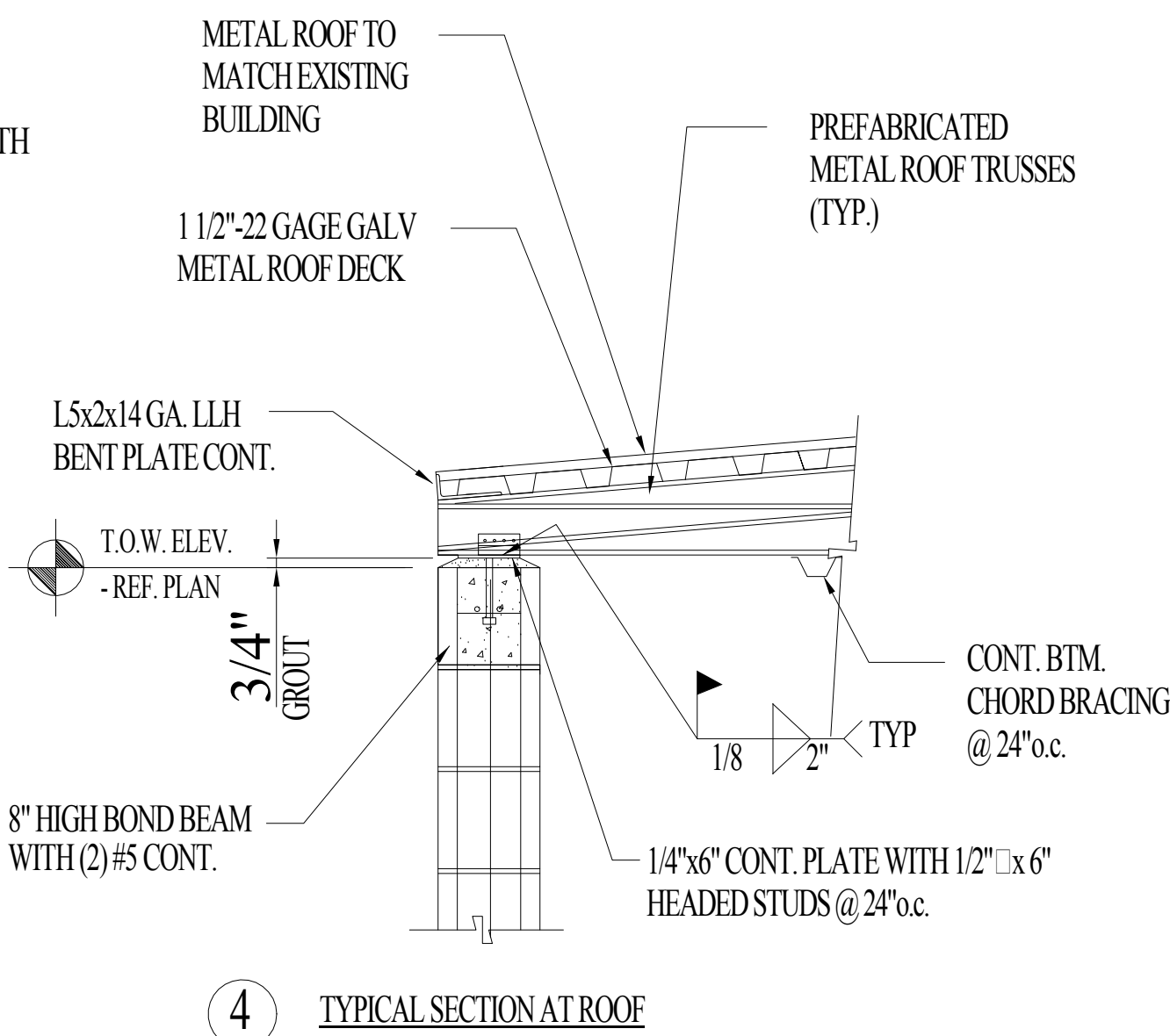
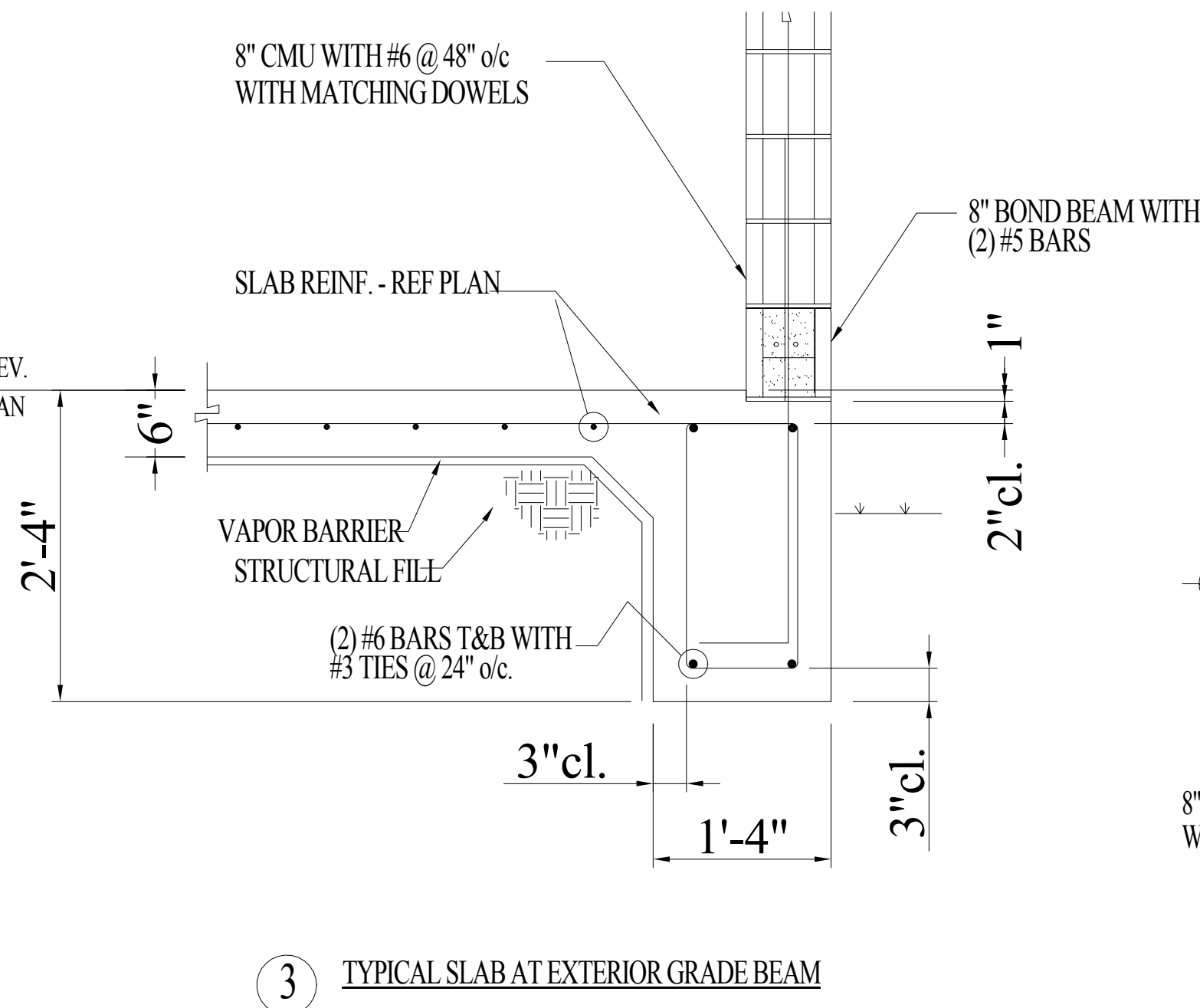
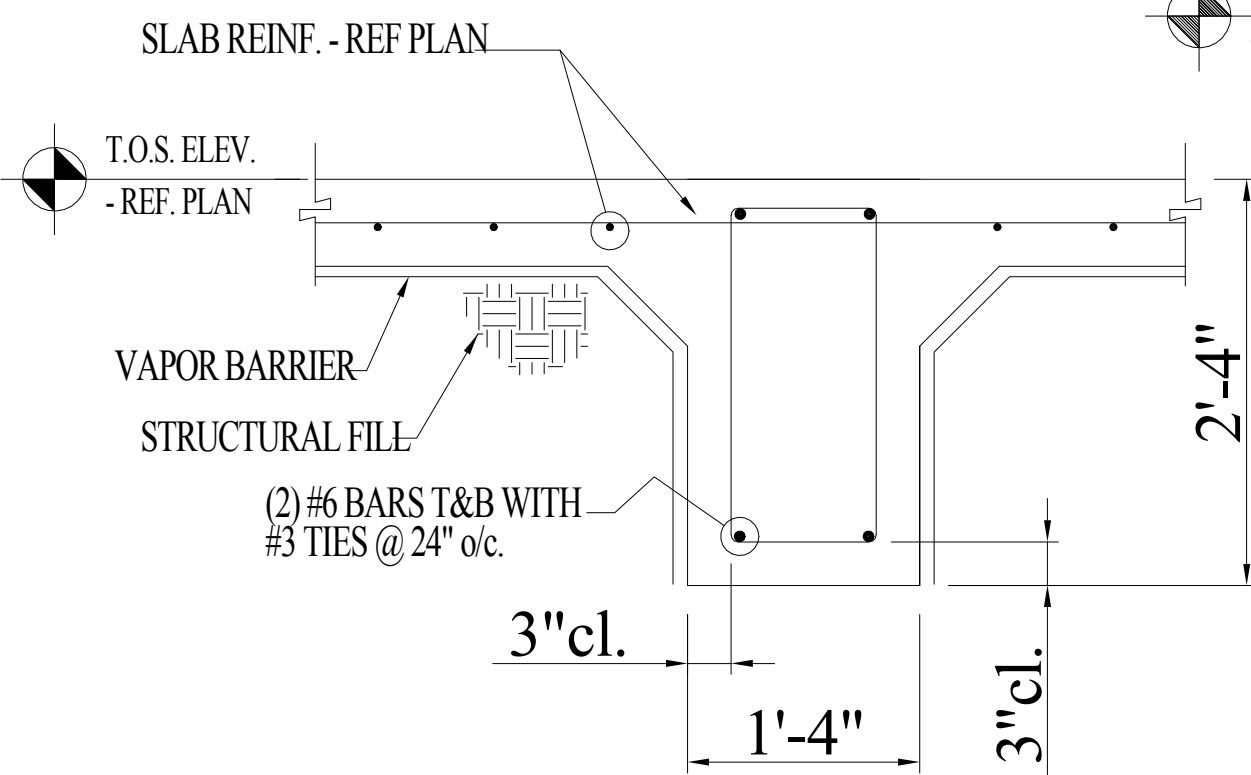


MASONRY WALL REINFORCING NOTES

1. VERTICAL WALL REINFORCING SHALL ALIGN WITH VERTICAL FOUNDATION DOWELS. DOWELS SHALL BE PLACED IN CENTER OF CMU WALL WITH ACI STANDARD HOOK. PLACE HOOKS DIRECTLY ON TOP OF BOTTOM LAYER OF FOOTING REINFORCING.
2. TYPICAL VERTICAL WALL REINFORCEMENT TO BE PLACED IN CENTER OF WALL. GROUT CELLS FULL THAT CONTAIN REINFORCEMENT FOR CLARITY. ALL VERTICAL AND HORIZONTAL REINFORCING IS SHOWN CONTINUOUS. HOWEVER VERTICAL SHALL BE LAPPED AND SPICED TO ACCOMMODATE MAXIMUM GROUT LIFTS OF 5'-4" AND HORIZONTAL BARS SHALL BE LAPPED AND SPICED AS REQUIRED. ALL VERTICAL BARS SHALL BE ACCURATELY LOCATED WITHIN THE CELL WITH REBAR POSITIONERS PRIOR TO PLACING GROUT IN CELLS. ALL LAPS SHALL BE 36 BAR DIAMETERS UNLESS NOTED OTHERWISE.
3. REFERENCE ARCHITECTURAL DRAWINGS FOR SIZE AND LOCATION OF ALL OPENINGS IN MASONRY WALLS.
4. ALL VERTICAL REINFORCING SHALL STOP 2" CLEAR FROM TOP OF WALL UNLESS NOTED.
5. HORIZONTAL JOINT REINFORCING SHALL BE LADDER TYPE AT 16" o.c. - DISCONTINUE AT CONTROL JOINTS.
6. MASONRY CONTROL JOINTS SHALL BE DISCONTINUOUS AT ALL BOND BEAMS AND SHALL NOT EXTEND BELOW GRADE. COORDINATE EXACT LOCATION OF MASONRY CONTROL JOINTS WITH THE ARCHITECT.
7. REFERENCE SECTIONS AND DETAILS FOR SIZE AND LOCATION OF BOND BEAMS AND QUANTITY OF REINFORCING. PROVIDE HORIZONTAL BOND BEAMS IN ALL INTERIOR MASONRY WALLS. 8" HIGH WITH (2) #5 CONT. AT TOP OF WALL. PROVIDE CORNER BARS AT ALL BOND BEAM INTERSECTIONS TO MATCH HORIZONTAL REINFORCING.



CONSULTANTS:		ARCHITECT/ENGINEERS:		Drawing Title DETAILS	Project Title MED GAS PUMP BUILDING @ CLC	Project Number 674-14-031	Office of Construction and Facilities Management Department of Veterans Affairs	
				Approved: Project Director	Location TEMPLE, TX	Building Number		
					Date 1/27/2015 2:00:06 PM	Checked VG		
					Drawn TB	Drawing Number S1		