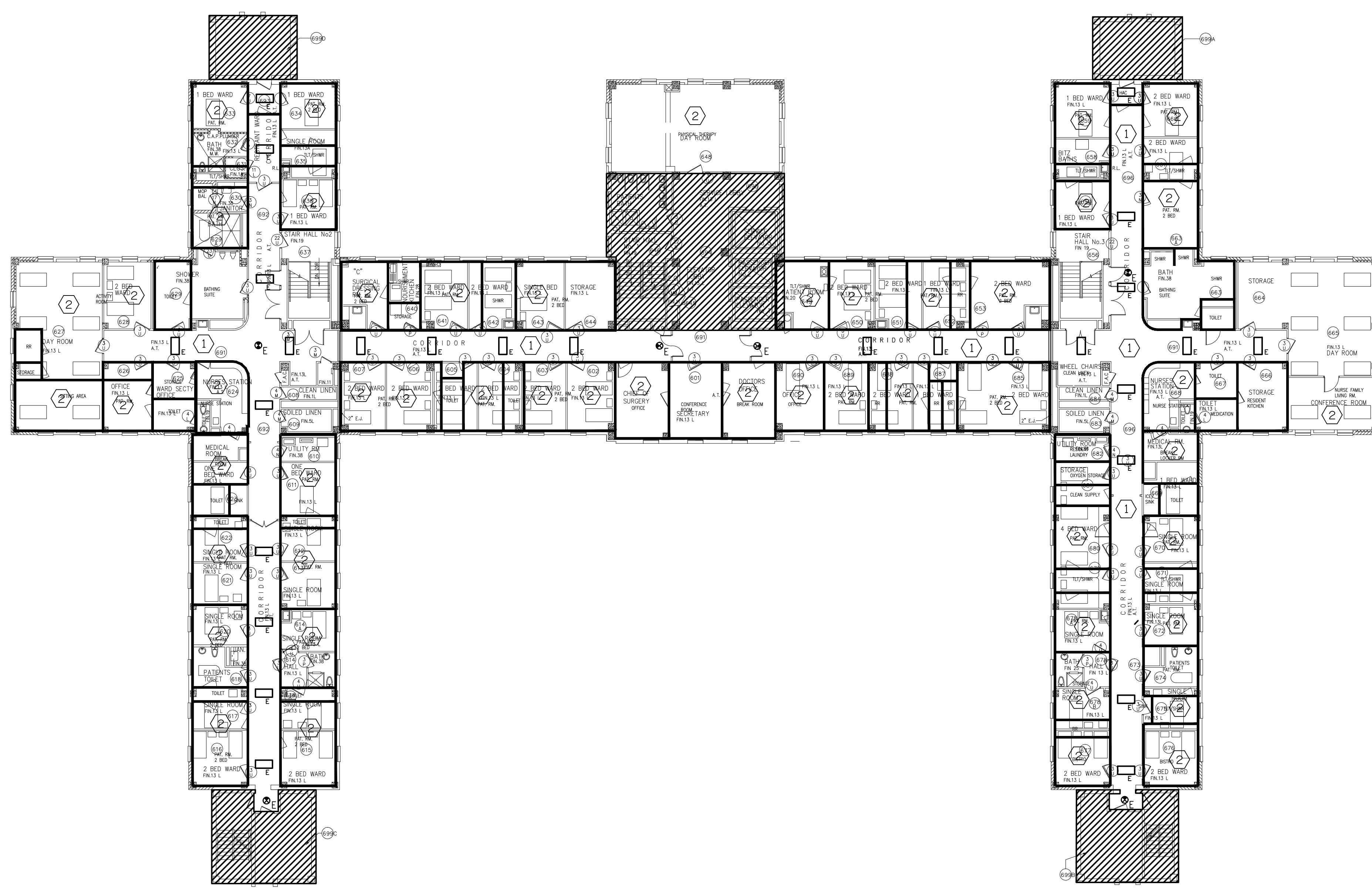
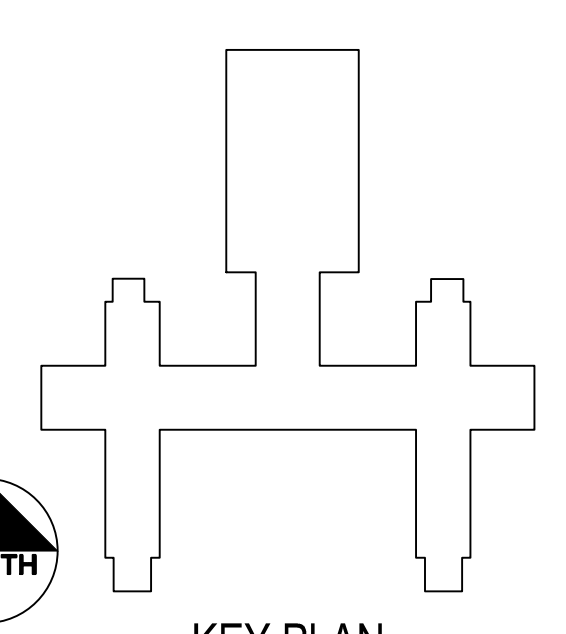


one eighth inch = one foot
one quarter inch = one foot
three eighths inch = one foot
one half inch = one foot
three quarters inch = one foot
one inch = one foot
one and one half inch = one foot
two inch = one foot
three inch = one foot
four inch = one foot
five inch = one foot
six inch = one foot
seven inch = one foot
eight inch = one foot
nine inch = one foot
ten inch = one foot
eleven inch = one foot
twelve inch = one foot
thirteen inch = one foot
fourteen inch = one foot
fifteen inch = one foot
sixteen inch = one foot
seventeen inch = one foot
eighteen inch = one foot
nineteen inch = one foot
twenty inch = one foot
twenty one inch = one foot
twenty two inch = one foot
twenty three inch = one foot
twenty four inch = one foot
twenty five inch = one foot
twenty six inch = one foot
twenty seven inch = one foot
twenty eight inch = one foot
twenty nine inch = one foot
thirty inch = one foot
thirty one inch = one foot
thirty two inch = one foot
thirty three inch = one foot
thirty four inch = one foot
thirty five inch = one foot
thirty six inch = one foot
thirty seven inch = one foot
thirty eight inch = one foot
thirty nine inch = one foot
forty inch = one foot
forty one inch = one foot
forty two inch = one foot
forty three inch = one foot
forty four inch = one foot
forty five inch = one foot
forty six inch = one foot
forty seven inch = one foot
forty eight inch = one foot
forty nine inch = one foot
fifty inch = one foot
fifty one inch = one foot
fifty two inch = one foot
fifty three inch = one foot
fifty four inch = one foot
fifty five inch = one foot
fifty six inch = one foot
fifty seven inch = one foot
fifty eight inch = one foot
fifty nine inch = one foot
sixty inch = one foot
sixty one inch = one foot
sixty two inch = one foot
sixty three inch = one foot
sixty four inch = one foot
sixty five inch = one foot
sixty six inch = one foot
sixty seven inch = one foot
sixty eight inch = one foot
sixty nine inch = one foot
seventy inch = one foot
seventy one inch = one foot
seventy two inch = one foot
seventy three inch = one foot
seventy four inch = one foot
seventy five inch = one foot
seventy six inch = one foot
seventy seven inch = one foot
seventy eight inch = one foot
seventy nine inch = one foot
eighty inch = one foot
eighty one inch = one foot
eighty two inch = one foot
eighty three inch = one foot
eighty four inch = one foot
eighty five inch = one foot
eighty six inch = one foot
eighty seven inch = one foot
eighty eight inch = one foot
eighty nine inch = one foot
ninety inch = one foot
ninety one inch = one foot
ninety two inch = one foot
ninety three inch = one foot
ninety four inch = one foot
ninety five inch = one foot
ninety six inch = one foot
ninety seven inch = one foot
ninety eight inch = one foot
ninety nine inch = one foot
one hundred inch = one foot



1

BLDG. 11 - 6TH FLR.
SCALE: 1/16" = 1'-0"



KEY PLAN

NOTICE: DEMOLITION

CONTRACTOR SHALL REMOVE ALL EXISTING LIGHT FIXTURES SHOWN ON DRAWINGS IN DEMOLITION (NON-SHADE) AREAS, UNLESS OTHERWISE NOTED. ALL CIRCUIT WIRING CONNECTED TO LIGHT FIXTURES BEING REMOVED SHALL BE DISCONNECTED, CAPPED, AND LEFT IN SAFE CONDITION FOR LATER RECONNECTION TO RELOCATED AND/OR NEW FIXTURES IN NEW CONSTRUCTION PHASE. THE REMAINING ENDS OF REMOVE WIRING SHALL BE TERMINATED AND CAPPED WITHIN THE NEAREST J-BOX/EQUIPMENT ENCLOSURE, WHERE EXISTING LIGHT FIXTURES ARE BEING REUSED. REMOVE FIXTURES AND CLEAN AS REQUIRED. RELAMP AND REINSTALL IN NEW LOCATIONS AS INDICATED ON THE DRAWINGS.

GENERAL NOTES: (THIS SHEET ONLY)

1. LIGHT FIXTURES MARKED '1' ARE EXISTING AND SHALL BE RELOCATED OR DEMOLISHED AS NOTED. LIGHT FIXTURES TO BE RELOCATED SHALL BE PROTECTED FROM DAMAGE AND STORED FOR LATER REINSTALLATION. REFER TO ELECTRICAL SYMBOL LEGEND, SHEET 61001.

KEYE NOTES: (THIS SHEET ONLY)

- 1 DEMOLISH EXISTING FLUORESCENT FIXTURES SHOWN ON DRAWING. REMOVE EXISTING EXIT LIGHTS AND STORE FOR LATER REINSTALLATION. CIRCUIT WIRING SHALL REMAIN AND BE RECONNECTED TO NEW LIGHT FIXTURE. REFER TO NEW WORK LIGHTING PLAN SHEETS.
- 2 REMOVE EXISTING LIGHT FIXTURES IN THIS SPACE, BUT ONLY IN AREAS WHERE CEILING IS TO BE TAKEN DOWN AND RELOCATED TO FACILITATE HVAC DUCT WORK. COORDINATE THIS WORK AND REINSTALLATION OF FIXTURES WITH HVAC CONTRACTOR.

CONSULTANTS:

Goetting
Goetting & Associates, Inc.
12710 Research Blvd., Suite 355
Austin, Texas 78759
512/416-1654 FAX: 512/416-7547

ADRIAN LOZANO
REGISTERED PROFESSIONAL ENGINEER
TIG GOETTING, INC. 07-15-13
E-3053

ARCHITECT/ENGINEERS:

RH SHACKELFORD, INC.
SOVOSB

Approved: Assistant Director	Approved: Chief of Staff	Approved: Chief, Engineering
Approved: Service Chief	Approved: Service Chief	Approved: Service Chief
Approved: Chief, Bio-Med	Approved: Chief, EMS	Approved: Chief, Infection Control
Approved: Chief, IT	Approved: Chief, M&O	Approved: Chief, Police
Approved: Chief, Safety	Approved: Chief	Approved: Chief

Drawing Title
**ELECTRICAL DEMOLITION
BUILDING 11 - SIXTH FLOOR
LIGHTING PLAN**

Location
Kernville Veterans Hospital
Veterans Affairs
2600 Memorial Blvd.
Kernville, TX 78028

Project Name KD AIR HANDLER REPLACEMENT (AHU) PROJECT - PHASE II			Project Number 671A4-09-119		Office of Construction and Facilities Management
			Date 09/13/12		
			Drawing Number 11-ED107		
			Dwg. of		
Building Number		Checked RTO	Drawn RTO		