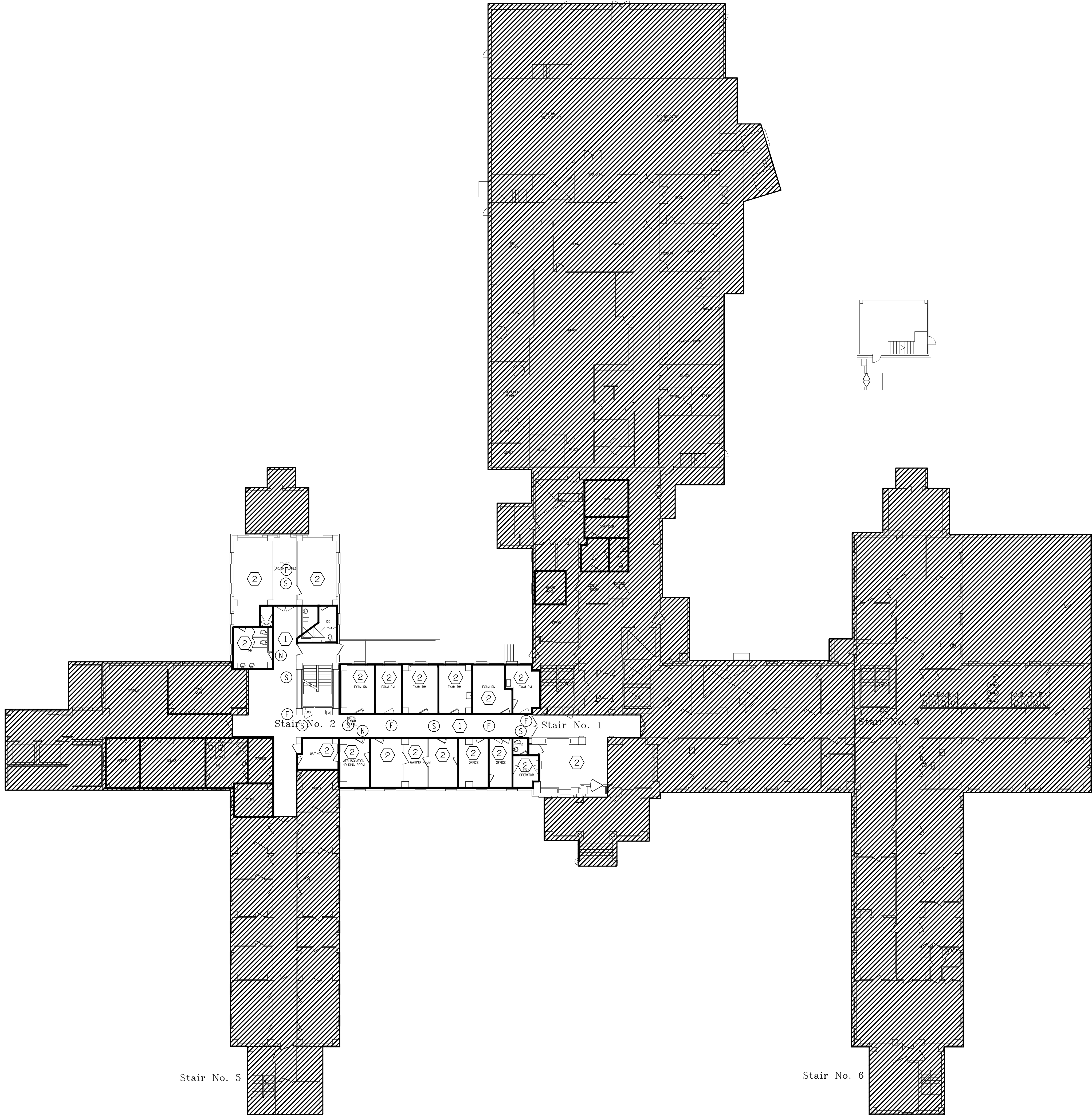


one eighth inch = one foot
one quarter inch = one foot
three eighths inch = one foot
one half inch = one foot
three quarters inch = one foot
one inch = one foot
one and one half inch = one foot
two inch = one foot
three inches = one foot
four inch = one foot
five inch = one foot
six inch = one foot
seven inch = one foot
eight inch = one foot
nine inch = one foot
ten inch = one foot
eleven inch = one foot
twelve inch = one foot
thirteen inch = one foot
fourteen inch = one foot
fifteen inch = one foot
sixteen inch = one foot
seventeen inch = one foot
eighteen inch = one foot
nineteen inch = one foot
twenty inch = one foot
twenty one inch = one foot
twenty two inch = one foot
twenty three inch = one foot
twenty four inch = one foot
twenty five inch = one foot
twenty six inch = one foot
twenty seven inch = one foot
twenty eight inch = one foot
twenty nine inch = one foot
thirty inch = one foot
thirty one inch = one foot
thirty two inch = one foot
thirty three inch = one foot
thirty four inch = one foot
thirty five inch = one foot
thirty six inch = one foot
thirty seven inch = one foot
thirty eight inch = one foot
thirty nine inch = one foot
forty inch = one foot
forty one inch = one foot
forty two inch = one foot
forty three inch = one foot
forty four inch = one foot
forty five inch = one foot
forty six inch = one foot
forty seven inch = one foot
forty eight inch = one foot
forty nine inch = one foot
fifty inch = one foot
fifty one inch = one foot
fifty two inch = one foot
fifty three inch = one foot
fifty four inch = one foot
fifty five inch = one foot
fifty six inch = one foot
fifty seven inch = one foot
fifty eight inch = one foot
fifty nine inch = one foot
sixty inch = one foot
sixty one inch = one foot
sixty two inch = one foot
sixty three inch = one foot
sixty four inch = one foot
sixty five inch = one foot
sixty six inch = one foot
sixty seven inch = one foot
sixty eight inch = one foot
sixty nine inch = one foot
seventy inch = one foot
seventy one inch = one foot
seventy two inch = one foot
seventy three inch = one foot
seventy four inch = one foot
seventy five inch = one foot
seventy six inch = one foot
seventy seven inch = one foot
seventy eight inch = one foot
seventy nine inch = one foot
eighty inch = one foot
eighty one inch = one foot
eighty two inch = one foot
eighty three inch = one foot
eighty four inch = one foot
eighty five inch = one foot
eighty six inch = one foot
eighty seven inch = one foot
eighty eight inch = one foot
eighty nine inch = one foot
ninety inch = one foot
ninety one inch = one foot
ninety two inch = one foot
ninety three inch = one foot
ninety four inch = one foot
ninety five inch = one foot
ninety six inch = one foot
ninety seven inch = one foot
ninety eight inch = one foot
ninety nine inch = one foot
one hundred inch = one foot

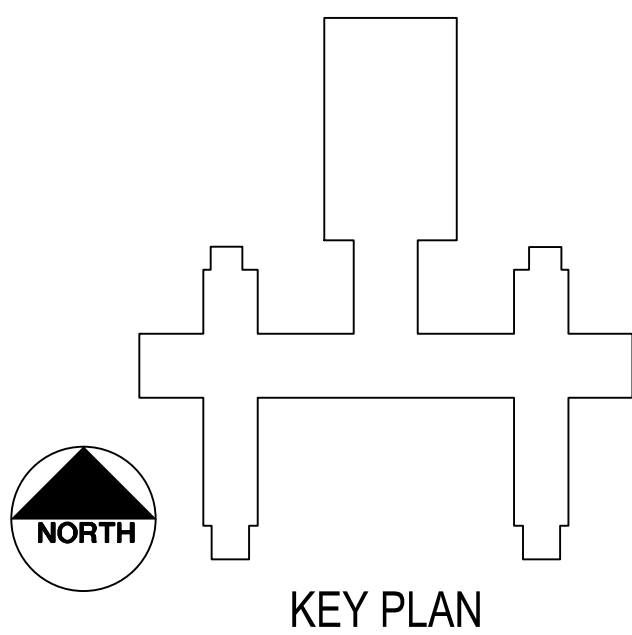




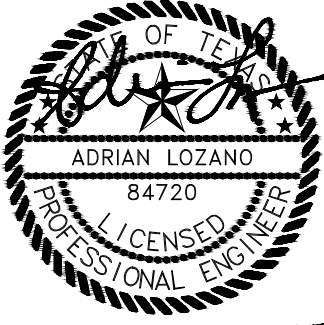

NOTICE: DEMOLITION
CONTRACTOR SHALL REMOVE ALL EXISTING SPECIAL SYSTEMS DEVICES SHOWN ON DRAWINGS IN DEMOLITION (NON-SHADED) AREAS, UNLESS OTHERWISE NOTED. ALL WIRING CONNECTED TO DEVICES BEING REMOVED SHALL BE DISCONNECTED, CAPPED, AND LEFT IN SAFE CONDITION FOR LATER RECONNECTION TO RELOCATED DEVICES IN NEW CONSTRUCTION PHASE. ALL DEVICES SHALL BE STORED AND PROTECTED FROM DAMAGE UNTIL THEY HAVE BEEN REINSTALLED.

GENERAL NOTES: (THIS SHEET ONLY)
1. ALL WORK WITH FIRE ALARM SYSTEM SHALL BE COORDINATED AND SCHEDULED WITH HOSPITAL PRIOR TO COMMENCING WORK.

KEYED NOTES: (THIS SHEET ONLY)
① REMOVE EXISTING SPECIAL SYSTEM DEVICES IN EXISTING CORRIDOR CEILING AND RELOCATE TO NEW CEILING.
② REMOVE AND RELOCATE EXISTING SPECIAL SYSTEM DEVICES IN CEILING IN THIS SPACE AS REQUIRED DURING THE REMOVAL AND REINSTALLATION OF HVAC DUCT BY OTHERS.

1 BLDG. 11 - 1ST FLR.
SCALE: 1/16" = 1'-0"



Revisions:		Date	
CONSULTANTS:		ARCHITECT/ENGINEERS:	
			
			
Approved: Assistant Director		Approved: Chief of Staff	
Approved: Service Chief		Approved: Service Chief	
Approved: Chief, Bio-Med		Approved: Chief, EMS	
Approved: Chief, IT		Approved: Chief, M&O	
Approved: Chief, Safety		Approved: Chief	
Approved: Chief, Engineering		Approved: Service Chief	
Approved: Chief, Infection Control		Approved: Chief, Police	
Approved: Chief		Approved: Chief	
Drawing Title		Project Name	
ELECTRICAL DEMOLITION BUILDING 11 - FIRST FLOOR AUXILIARY SYSTEMS PLAN		KD AIR HANDLER REPLACEMENT (AHU) PROJECT - PHASE II	
Location		Project Number	
Kernville Veterans Hospital Veterans Affairs 2600 Memorial Blvd. Kernville, TX 78028		671A4-09-119	
Building Number		Date	
Checked RTO		09/13/12	
Drawn RTO		Drawing Number	
Dwg. of		11-ED109	
Office of Construction and Facilities Management		Department of Veterans Affairs	