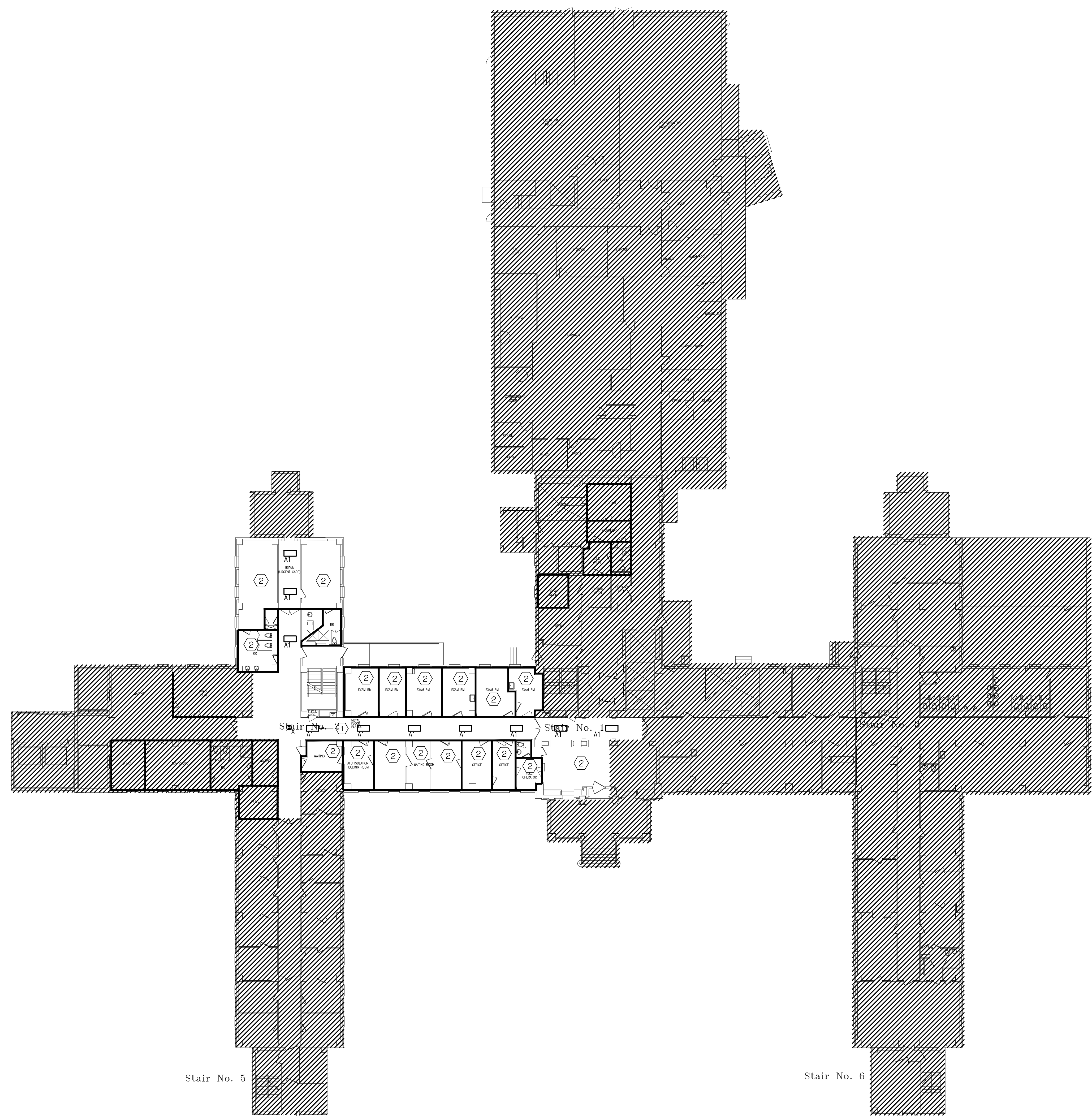


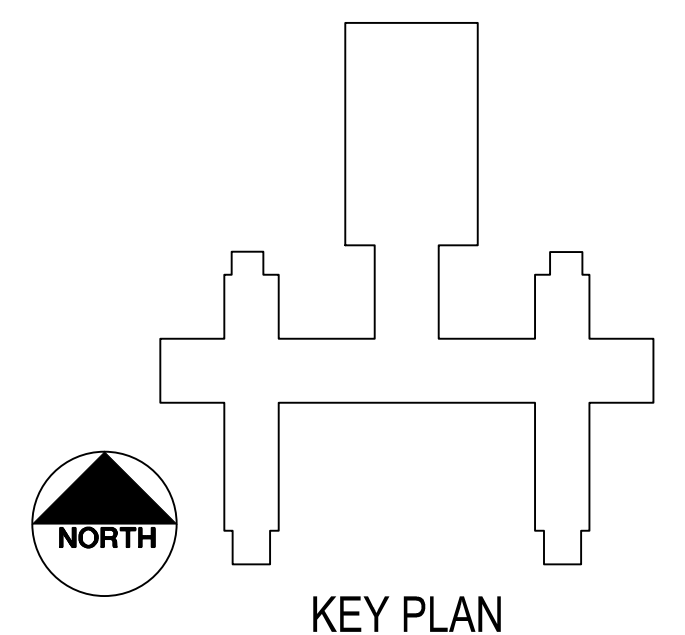
one eighth inch = one foot
one quarter inch = one foot
three eighths inch = one foot
one half inch = one foot
three quarters inch = one foot
one inch = one foot
one and one half inch = one foot
two inch = one foot
three inches = one foot





GENERAL NOTES: (THIS SHEET ONLY)
1. ALL TYPE 'A1' FIXTURE SHALL BE ONE OF THE FOLLOWING:
LITHONIA-- 2R1BB 2 32; METALUX-- 2AC-2321B.

KEYED NOTES: (THIS SHEET ONLY)
1 PROVIDE NEW FLUORESCENT FIXTURES IN CORRIDORS AS SHOWN. REINSTALL AND RELOCATE EXISTING EXIT LIGHT TAKEN DOWN DURING DEMOLITION IN NEW CEILING AS SHOWN.
2 REINSTALL EXISTING LIGHT FIXTURES TAKEN DOWN DURING DEMOLITION PHASE IN THIS SPACE IN SAME LOCATION AS BEFORE.

1 BLDG. 11 - 1ST FLR.
SCALE: 1/16" = 1'-0"



Revisions:		Date	
CONSULTANTS:		ARCHITECT/ENGINEERS:	
 Goetting & Associates, Inc. 12710 Research Blvd. Suite 355 Austin, Texas 78759 512/416-1654 FAX: 512/416-7547		 RH SHACKELFORD, INC. SOYOSB	
Approved: Assistant Director		Approved: Chief of Staff	
Approved: Service Chief		Approved: Service Chief	
Approved: Chief, Bio-Med		Approved: Chief, EMS	
Approved: Chief, IT		Approved: Chief, M&O	
Approved: Chief, Safety		Approved: Chief	
Approved: Chief, Engineering		Approved: Service Chief	
Approved: Chief, Infection Control		Approved: Chief, Police	
Approved: Chief		Approved: Chief	
Drawing Title		Project Name	
ELECTRICAL NEW WORK BUILDING 11 - FIRST FLOOR LIGHTING PLAN		KD AIR HANDLER REPLACEMENT (AHU) PROJECT - PHASE II	
Location		Project Number	
Kernville Veterans Hospital Veterans Affairs 2600 Memorial Blvd. Kernville, TX 78028		671A4-09-119	
Building Number		Date	
Checked RTO		09/13/12	
Drawn RTO		Drawing Number	
Dwg. of		11-EL101	
Office of Construction and Facilities Management		Department of Veterans Affairs	