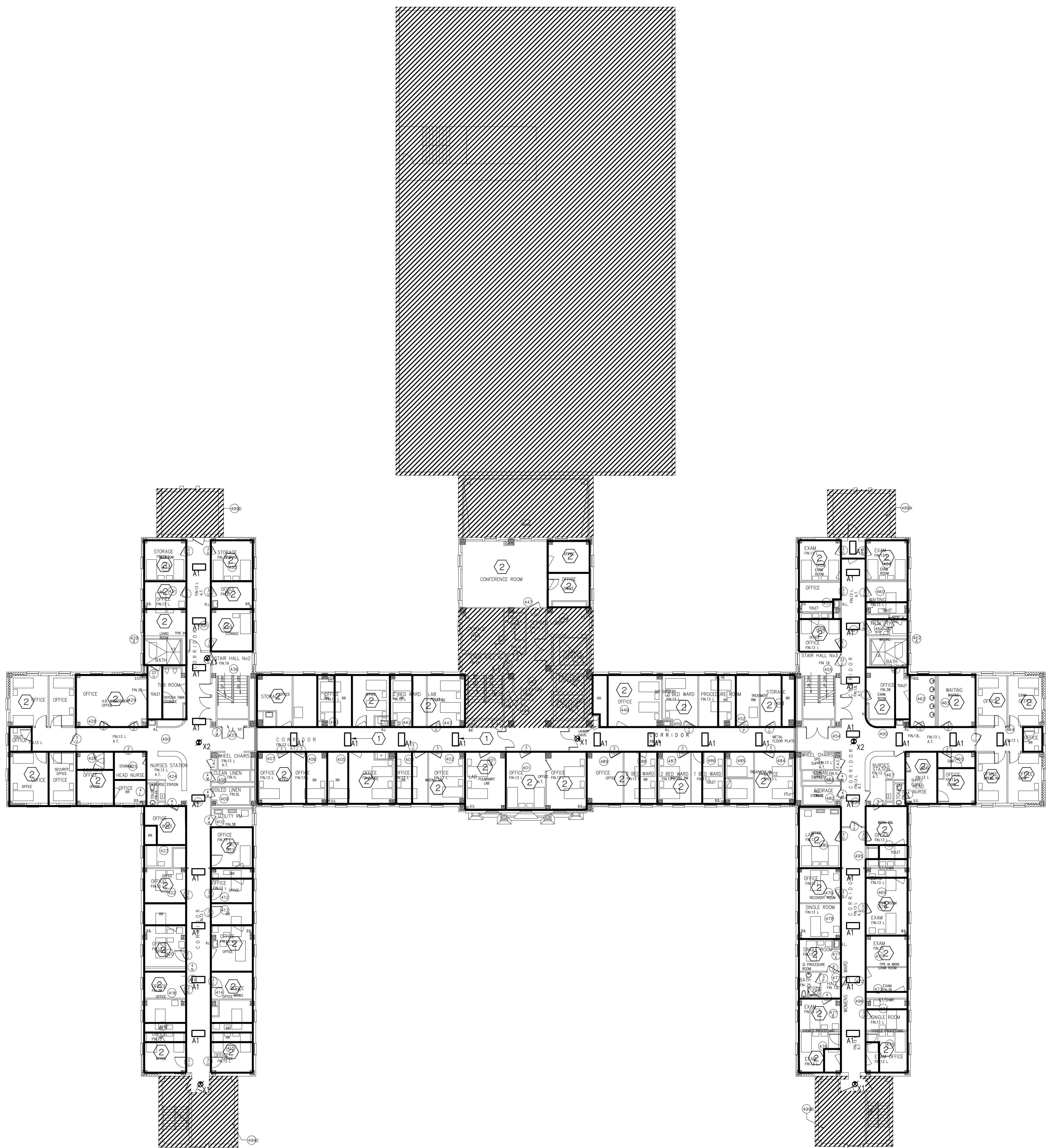


three inches = one foot  
one and one half inch = one foot  
one inch = one foot  
three quarters inch = one foot  
one half inch = one foot  
three eighths inch = one foot  
one quarter inch = one foot  
one eighth inch = one foot



1

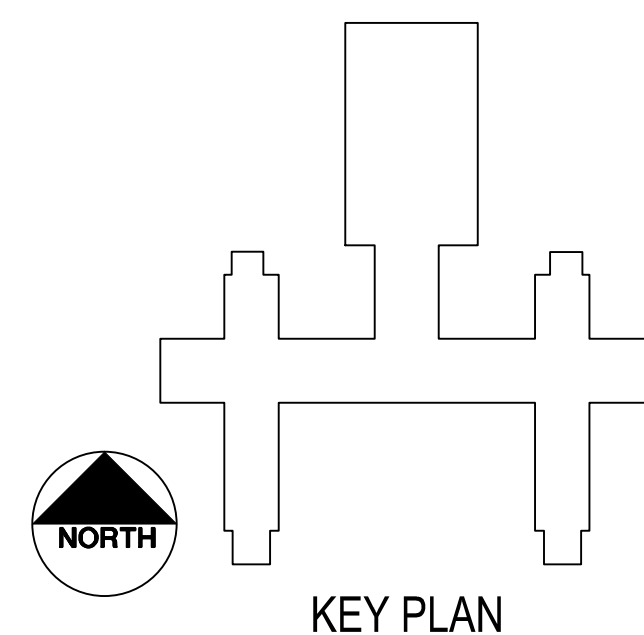
**BLDG. 11 - 4TH FLR.**  
SCALE: 1/16" = 1'-0"

**GENERAL NOTES: (THIS SHEET ONLY)**

1. ALL TYPE 'A1' FIXTURE SHALL BE ONE OF THE FOLLOWING:  
LITHONIA-- 2R1BB 2 32; METALUX-- 2AC-2321B.

**KEYED NOTES: (THIS SHEET ONLY)**

- 1 PROVIDE NEW FLUORESCENT FIXTURES IN CORRIDORS AS SHOWN. REINSTALL AND RELOCATE EXISTING EXIT LIGHT TAKEN DOWN DURING DEMOLITION IN NEW CEILING AS SHOWN.  
2 REINSTALL EXISTING LIGHT FIXTURES TAKEN DOWN DURING DEMOLITION PHASE IN THIS SPACE IN SAME LOCATION AS BEFORE.



|   |  |                                    |  |                              |                          |                                    |   |  |                |   |                            |
|---|--|------------------------------------|--|------------------------------|--------------------------|------------------------------------|---|--|----------------|---|----------------------------|
| CONSULTANTS:  |  | ARCHITECT/ENGINEERS:               |  | Approved: Assistant Director | Approved: Chief of Staff | Approved: Chief, Engineering       | Drawing Title   | Project Name   | Project Number | Office of<br>Construction<br>and Facilities<br>Management<br> |                            |
| <br>Goetting<br>Goetting & Associates, Inc.<br>12710 Research Blvd., Suite 355<br>Austin, Texas 78759<br>512/416-1654 FAX: 512/416-7547 |  | <br>RH SHACKELFORD, INC.<br>SOVOSB |  | Approved: Service Chief      | Approved: Service Chief  | Approved: Service Chief            | ELECTRICAL NEW WORK<br>BUILDING 11 - FOURTH FLOOR<br>LIGHTING PLAN                            | KD AIR HANDLER REPLACEMENT<br>(AHU) PROJECT - PHASE II | 671A4-09-119   |   |                            |
| <br>ADRIAN LOZANO<br>947270<br>LICENSED<br>ELECTRICAL ENGINEER<br>TTO GOETTING, INC. 07-15-13<br>F-303                                  |  |                                    |  | Approved: Chief, Bio-Med     | Approved: Chief, EMS     | Approved: Chief, Infection Control | Location  |  | Date           |   |                            |
|   |  |                                    |  | Approved: Chief, IT          | Approved: Chief, M&O     | Approved: Chief, Police            | Kernville Veterans Hospital<br>Veterans Affairs<br>2600 Memorial Blvd.<br>Kernville, TX 78028 |  | 09/13/12       |   |                            |
| Revisions:  |  |                                    |  | Approved: Chief, Safety      | Approved: Chief          | Approved: Chief                    |   | Building Number  | Checked<br>RTO | Drawn<br>RTO  | Drawing Number<br>11-EL102 |
| Date  |  |                                    |  |                              |                          |                                    |   |  |                |   | Dwg. of                    |