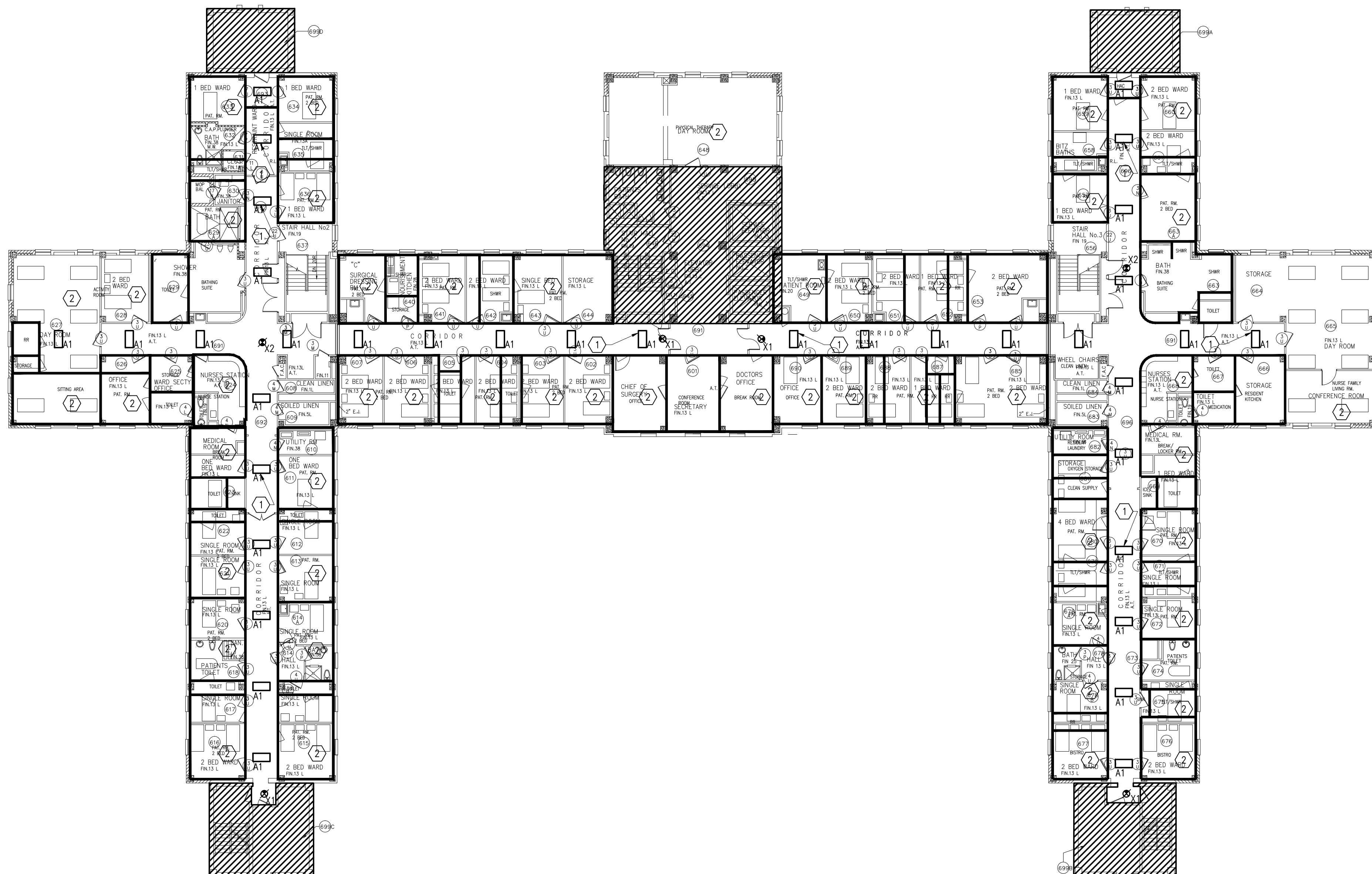


three inches = one foot
one and one half inches = one foot
one inch = one foot
three quarters inch = one foot
one half inch = one foot
three eighths inch = one foot
one quarter inch = one foot
one eighth inch = one foot



GENERAL NOTES: (THIS SHEET ONLY)

1. ALL TYPE 'A1' FIXTURE SHALL BE ONE OF THE FOLLOWING:
LITHONIA-- 2R1BB 2 32; METALUX-- 2AC-2321B.

KEYED NOTES: (THIS SHEET ONLY)

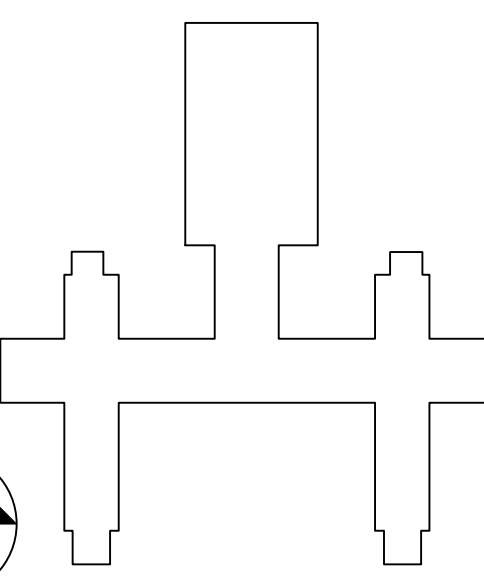
- ① PROVIDE NEW FLUORESCENT FIXTURES IN CORRIDORS AS SHOWN. REINSTALL AND RELOCATE EXISTING EXIT LIGHT TAKEN DOWN DURING DEMOLITION IN NEW CEILING AS SHOWN.
- ② REINSTALL EXISTING LIGHT FIXTURES TAKEN DOWN DURING DEMOLITION PHASE IN THIS SPACE IN SAME LOCATION AS BEFORE.




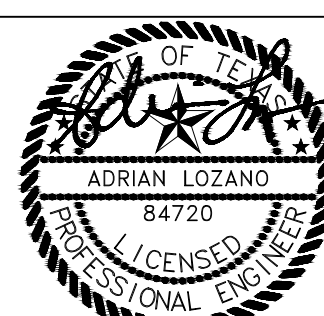


1

BLDG. 11 - 6TH FLR.

SCALE: 1/16" = 1'-0"



KEY PLAN

		CONSULTANTS:	 Goetting & Associates, Inc. 12710 Research Blvd., Suite 355 Austin, Texas 78759 512/416-1654 FAX: 512/416-7547	 ADRIAN LOZANO #47720 LICENSED PROFESSIONAL ENGINEER TIG GOETTING, INC. 07-15-13 E-303	ARCHITECT/ENGINEERS:	 RH SHACKELFORD, INC. SDVOSB	Approved: Assistant Director	Approved: Chief of Staff	Approved: Chief, Engineering	Drawing Title ELECTRICAL NEW WORK BUILDING 11 - SIXTH FLOOR LIGHTING PLAN	Project Name KD AIR HANDLER REPLACEMENT (AHU) PROJECT - PHASE II	Project Number 671A4-09-119	Office of Construction and Facilities Management 
							Approved: Service Chief	Approved: Service Chief	Approved: Service Chief				
							Approved: Chief, Bio-Med	Approved: Chief, EMS	Approved: Chief, Infection Control				
							Approved: Chief, IT	Approved: Chief, M&O	Approved: Chief, Police				
							Approved: Chief, Safety	Approved: Chief	Approved: Chief				
Revisions:		Date		Location Kernville Veterans Hospital Veterans Affairs 2600 Memorial Blvd. Kernville, TX 78028		Building Number		Checked RTO	Drawn RTO	Drawing Number 11-EL104		Dwg. of	