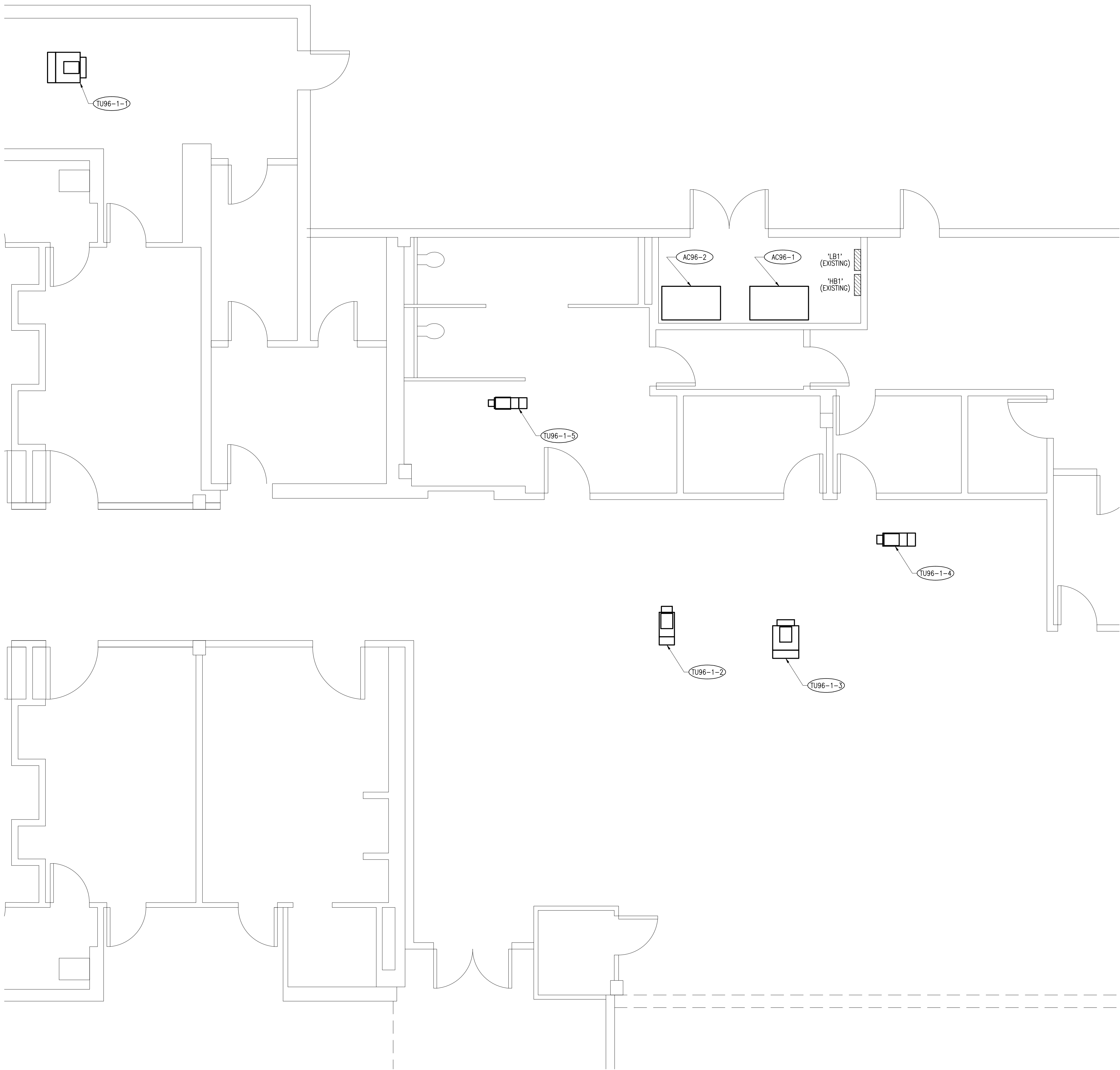



one eighth inch = one foot
one quarter inch = one foot
three eighths inch = one foot
one half inch = one foot
three quarters inch = one foot
one inch = one foot
one and one half inches = one foot
three inches = one foot

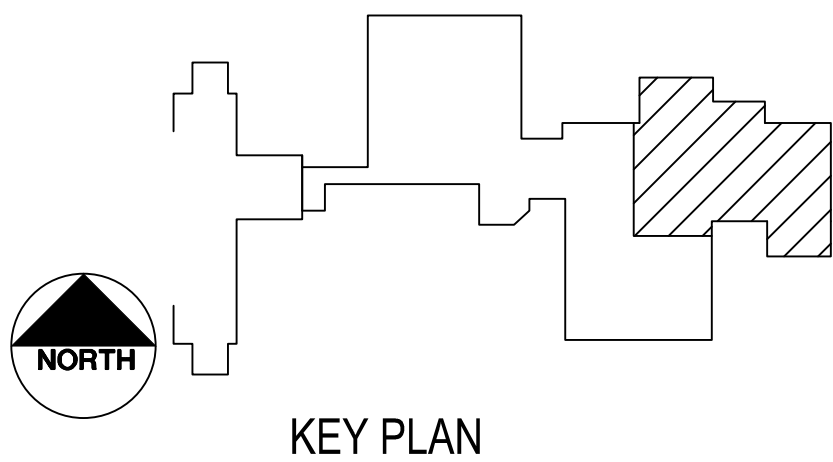
GENERAL NOTES: (THIS SHEET ONLY)
1. REFER TO MECHANICAL AND PLUMBING EQUIPMENT CONNECTION SCHEDULE ON SHEET EP601 REGARDING INFORMATION ON ALL TAGGED EQUIPMENT.





1

**BLDG. 96 - 1ST FLR.
MECHANICAL ROOMS**
SCALE: 1/4" = 1'-0"



		<div><div><div><div><div>T</div><div>T</div><div>C</div></div></div><div>Goetting</div><div>Goetting & Associates, Inc. 12710 Research Blvd., Suite 355 Austin, Texas 78759 512/416-1654 FAX: 512/416-7547</div></div><div><div><div><div><div><div></div><div></div><div></div><div></div><div></div></div><div>ADRIAN LOZANO</div><div>94720</div><div>REGISTERED PROFESSIONAL ENGINEER</div><div>STATE OF TEXAS</div></div></div><div>TIG GOETTING, INC. P-303</div><div>07-15-13</div></div></div><td rowspan="6"><div><div><div><div><div></div><div></div><div></div></div><div>RH SHACKELFORD, INC</div><div>SOVOSB</div></div></div></div></td><td>Approved: Assistant Director</td><td>Approved: Chief of Staff</td><td>Approved: Chief, Engineering</td><td rowspan="5"><div>Drawing Title</div><div>ELECTRICAL NEW WORK BUILDING 96 - FIRST FLOOR POWER PLAN - MECH RMS</div><div>Location</div><div>Kernville Veterans Hospital Veterans Affairs 2600 Memorial Blvd. Kernville, TX 78028</div></td><td colspan="2">Project Name</td><td colspan="2">Project Number</td><td rowspan="5"><div>Office of Construction and Facilities Management</div><div><div><div></div><div>Department of Veterans Affairs</div></div></div></td></div>	<div><div><div><div><div></div><div></div><div></div></div><div>RH SHACKELFORD, INC</div><div>SOVOSB</div></div></div></div>	Approved: Assistant Director	Approved: Chief of Staff	Approved: Chief, Engineering	<div>Drawing Title</div> <div>ELECTRICAL NEW WORK BUILDING 96 - FIRST FLOOR POWER PLAN - MECH RMS</div> <div>Location</div> <div>Kernville Veterans Hospital Veterans Affairs 2600 Memorial Blvd. Kernville, TX 78028</div>	Project Name		Project Number		<div>Office of Construction and Facilities Management</div> <div><div><div></div><div>Department of Veterans Affairs</div></div></div>
				Approved: Service Chief	Approved: Service Chief	Approved: Service Chief		Date				
				Approved: Chief, Bio-Med	Approved: Chief, EMS	Approved: Chief, Infection Control		09/13/12				
				Approved: Chief, IT	Approved: Chief, M&O	Approved: Chief, Police		Drawing Number				
				Approved: Chief, Safety	Approved: Chief	Approved: Chief						
Revisions:		Date		Building Number		Checked	Drawn	96-EP401				
						RTO	RTO		Dwg. of			