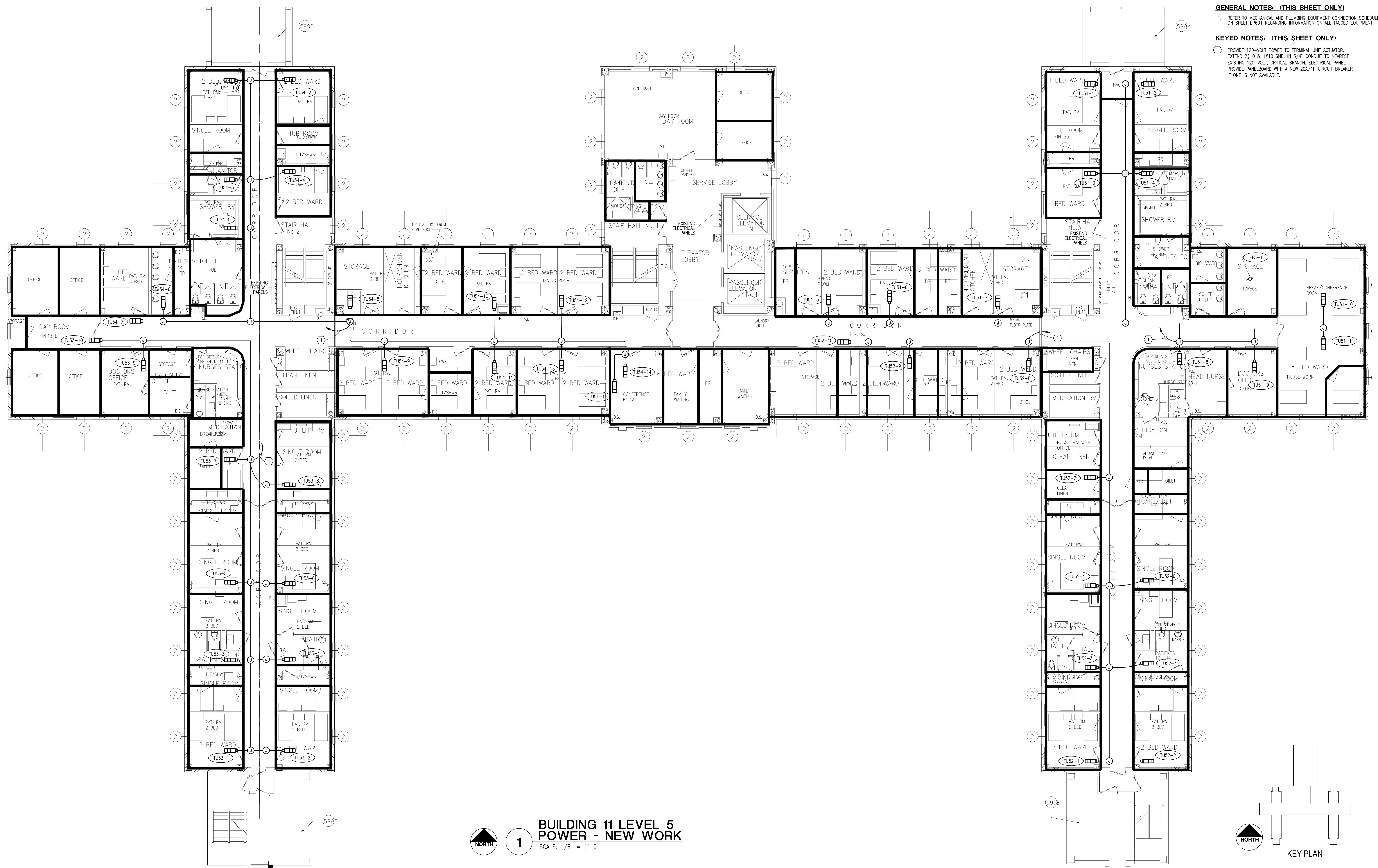
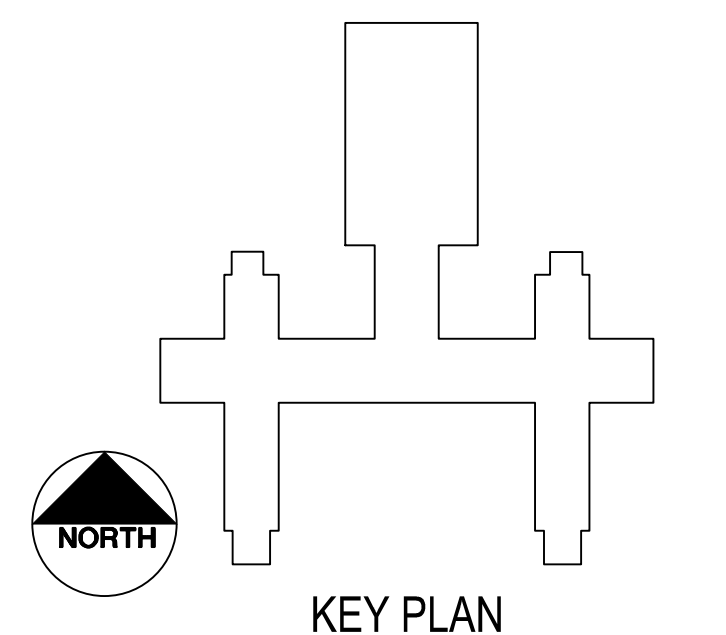


one eighth inch = one foot
one quarter inch = one foot
one half inch = one foot
three eighths inch = one foot
one inch = one foot
one and one half inch = one foot
two inches = one foot
three inches = one foot
four inches = one foot
five inches = one foot
six inches = one foot
seven inches = one foot
eight inches = one foot
nine inches = one foot
ten inches = one foot
eleven inches = one foot
twelve inches = one foot
thirteen inches = one foot
fourteen inches = one foot
fifteen inches = one foot
sixteen inches = one foot
seventeen inches = one foot
eighteen inches = one foot
nineteen inches = one foot
twenty inches = one foot
twenty one inches = one foot
twenty two inches = one foot
twenty three inches = one foot
twenty four inches = one foot
twenty five inches = one foot
twenty six inches = one foot
twenty seven inches = one foot
twenty eight inches = one foot
twenty nine inches = one foot
thirty inches = one foot
thirty one inches = one foot
thirty two inches = one foot
thirty three inches = one foot
thirty four inches = one foot
thirty five inches = one foot
thirty six inches = one foot
thirty seven inches = one foot
thirty eight inches = one foot
thirty nine inches = one foot
forty inches = one foot
forty one inches = one foot
forty two inches = one foot
forty three inches = one foot
forty four inches = one foot
forty five inches = one foot
forty six inches = one foot
forty seven inches = one foot
forty eight inches = one foot
forty nine inches = one foot
fifty inches = one foot
fifty one inches = one foot
fifty two inches = one foot
fifty three inches = one foot
fifty four inches = one foot
fifty five inches = one foot
fifty six inches = one foot
fifty seven inches = one foot
fifty eight inches = one foot
fifty nine inches = one foot
sixty inches = one foot
sixty one inches = one foot
sixty two inches = one foot
sixty three inches = one foot
sixty four inches = one foot
sixty five inches = one foot
sixty six inches = one foot
sixty seven inches = one foot
sixty eight inches = one foot
sixty nine inches = one foot
seventy inches = one foot
seventy one inches = one foot
seventy two inches = one foot
seventy three inches = one foot
seventy four inches = one foot
seventy five inches = one foot
seventy six inches = one foot
seventy seven inches = one foot
seventy eight inches = one foot
seventy nine inches = one foot
eighty inches = one foot
eighty one inches = one foot
eighty two inches = one foot
eighty three inches = one foot
eighty four inches = one foot
eighty five inches = one foot
eighty six inches = one foot
eighty seven inches = one foot
eighty eight inches = one foot
eighty nine inches = one foot
ninety inches = one foot
ninety one inches = one foot
ninety two inches = one foot
ninety three inches = one foot
ninety four inches = one foot
ninety five inches = one foot
ninety six inches = one foot
ninety seven inches = one foot
ninety eight inches = one foot
ninety nine inches = one foot
one hundred inches = one foot



- GENERAL NOTES: (THIS SHEET ONLY)**
1. REFER TO MECHANICAL AND PLUMBING EQUIPMENT CONNECTION SCHEDULE ON SHEET EP601 REGARDING INFORMATION ON ALL TAGGED EQUIPMENT.
- KEY NOTES: (THIS SHEET ONLY)**
1. PROVIDE 120-VOLT POWER TO TERMINAL UNIT ACTUATOR. EXTEND 2#10 & 1#10 GND. IN 3/4" CONDUIT TO NEAREST EXISTING 120-VOLT, CRITICAL BRANCH, ELECTRICAL PANEL. PROVIDE PANELBOARD WITH A NEW 20A/1P CIRCUIT BREAKER IF ONE IS NOT AVAILABLE.

**BUILDING 11 LEVEL 5
POWER - NEW WORK**
SCALE: 1/8" = 1'-0"



CONSULTANTS: Goetting & Associates, Inc. 12710 Research Blvd., Suite 355 Austin, Texas 78759 512/416-1654 FAX: 512/416-7547		ARCHITECT/ENGINEERS: RH SHACKELFORD, INC. SOVOSB		Approved: Assistant Director	Approved: Chief of Staff	Approved: Chief, Engineering	Drawing Title ELECTRICAL NEW WORK BUILDING 11 - FIFTH FLOOR POWER PLAN - VAV UNITS Location Kernville Veterans Hospital Veterans Affairs 2600 Memorial Blvd. Kernville, TX 78028	Project Name KD AIR HANDLER REPLACEMENT (AHU) PROJECT - PHASE II Building Number	Project Number 671A4-09-119 Date 09/13/12 Drawing Number 11-EP703 Dwg. of	Office of Construction and Facilities Management
Revisions:		Date		Approved: Service Chief	Approved: Service Chief	Approved: Service Chief				
				Approved: Chief, Bio-Med	Approved: Chief, EMS	Approved: Chief, Infection Control				
				Approved: Chief, IT	Approved: Chief, M&O	Approved: Chief, Police				
				Approved: Chief, Safety	Approved: Chief	Approved: Chief				