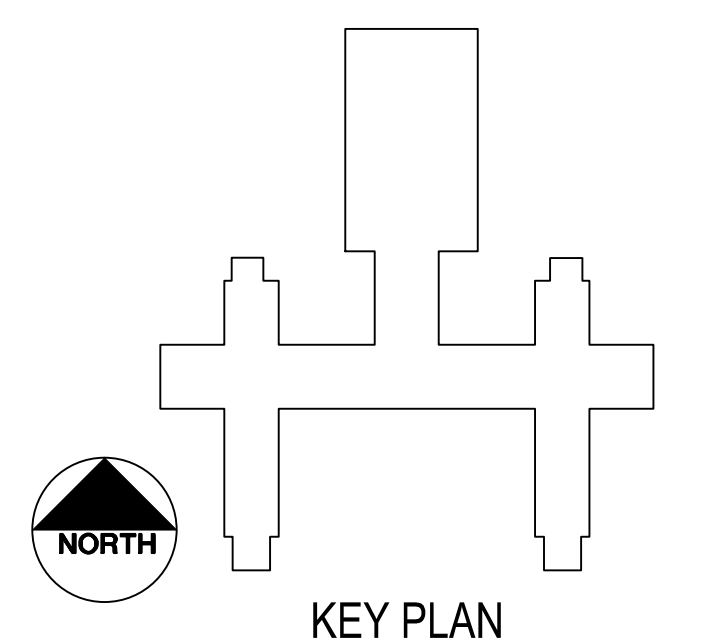
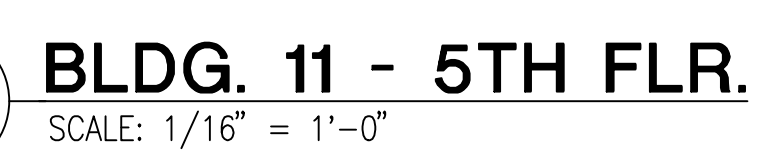


1. ALL WORK WITH FIRE ALARM SYSTEM SHALL BE COORDINATED AND SCHEDULED WITH HOSPITAL PRIOR TO COMMENCING WORK.

- 1 RELOCATE EXISTING SPECIAL SYSTEM DEVICES IN EXISTING CORRIDOR CEILING.
- 2 RELOCATE EXISTING SPECIAL SYSTEM DEVICES IN CEILING IN THIS SPACE AS REQUIRED.

[illegible]