

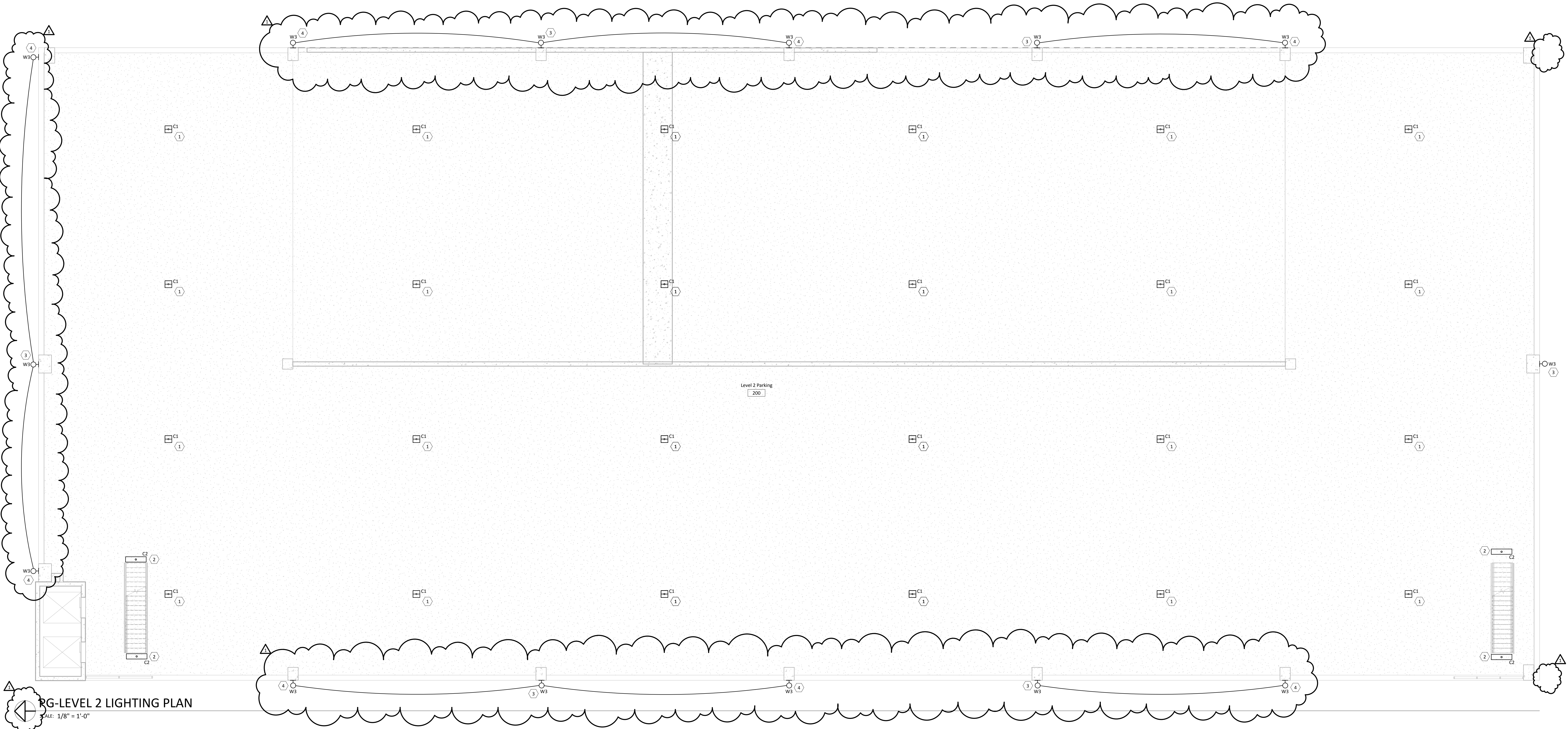
three inches = one foot
one and one-half inches = one foot
one inch = one foot
three-quarters inch = one foot
one-half inch = one foot
three-eighths inch = one foot
one-quarter inch = one foot
one-eighth inch = one foot

- PLAN NOTES
- 1.- REPLACE EXISTING METAL HALIDE FIXTURE WITH NEW LED FIXTURE.


2.- REPLACE EXISTING FLUORESCENT FIXTURE WITH NEW LED FIXTURE.

3.- REPLACE EXISTING WALL MOUNT FIXTURE WITH NEW LED FIXTURE.

4.- NEW WALL MOUNT FIXTURE. EXTEND CIRCUITING FROM EXISTING FIXTURE AS SHOWN AND WIRE COMPLETE.



RG-LEVEL 2 LIGHTING PLAN
SCALE: 1/8" = 1'-0"

35% REVIEW		08/08/14 08/21/14 10/08/14 11/25/14	CONSULTANTS:		<div></div>		ARCHITECT/ENGINEERS:		Drawing Title		Project Title		Project No. VA Project No. JPA Project No. 12028.00		Office of Construction and Facilities Management	
85% REVIEW							Engineering Ltd.		LEVEL 2 LIGHTING PLAN		Building PG		Building Number			
100% REVIEW							Facility Engineering Consultants						Drawing Number			
BID DOCUMENTS													EG102			
Revisions:		Date					855 Grandview Avenue, 3rd Floor Columbus, OH 43215 Phone: (614) 443-1378 Fax: (614) 443-1094 Email: dynamix@dynamix-ltd.com DEL # 10043		Approved: Project Director		Date 11/25/2014		Checked	Drawn	Department of Veterans Affairs	