



OBVAMC PARKING GARAGE

Pre-Bid Site Visit

Jan 29th, 2015

Agenda

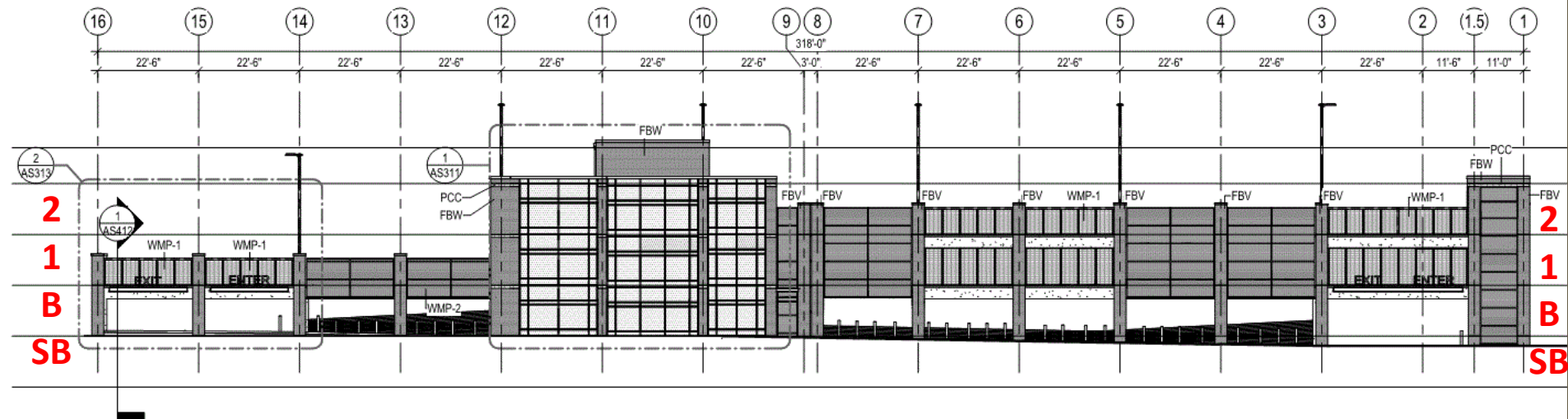
- Sign-In
- Introductions
- Site Plan / Location
- Garage Elevation & Levels
- Phasing / Project Coordination
- Deduct Bid Alternates
- Schedule / Milestones
- Questions
- Visit Site

Site Plan / Location



Garage Elevation & Levels

- North Elevation



1 NORTH ELEVATION
1/16" = 1'-0"

SPACE TABULATION

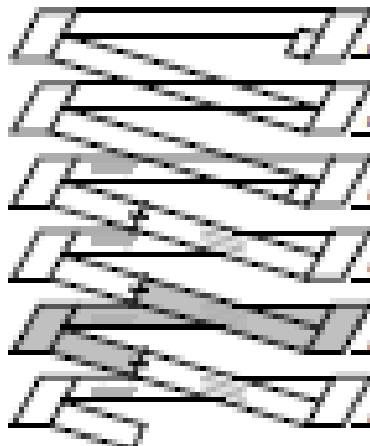
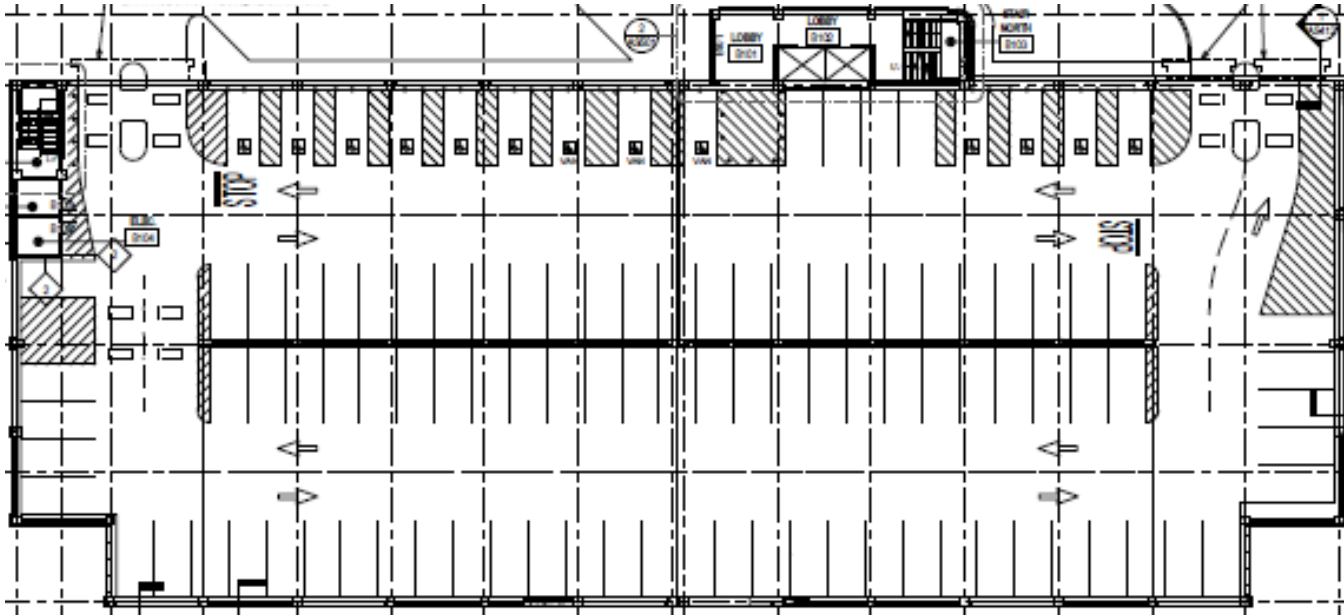
	DESCRIPTION	SPACES	ADA	ADA VAN	TOTAL
2	LEVEL 2	79	—	—	79
1	LEVEL 1	127	—	—	127
B	LEVEL B	95	10	3	108
SB	LEVEL SB	113	—	—	113
	TOTAL	414	10	3	427

FUTURE SPACE TABULATION

	DESCRIPTION	SPACES	ADA	ADA VAN	TOTAL
	LEVEL 4	109	—	—	109
	LEVEL 3	127	—	—	127
	LEVEL 2	127	—	—	127
	LEVEL 1	127	—	—	127
	LEVEL B	72	18	4	94
	LEVEL SB	113	—	—	113
	TOTAL	675	18	4	697

Garage Elevation & Levels

- Basement Level



4 – FUTURE 127 Spaces

3 – FUTURE 127 Spaces

2 – 79 Spaces (FUTURE 48 Spaces)

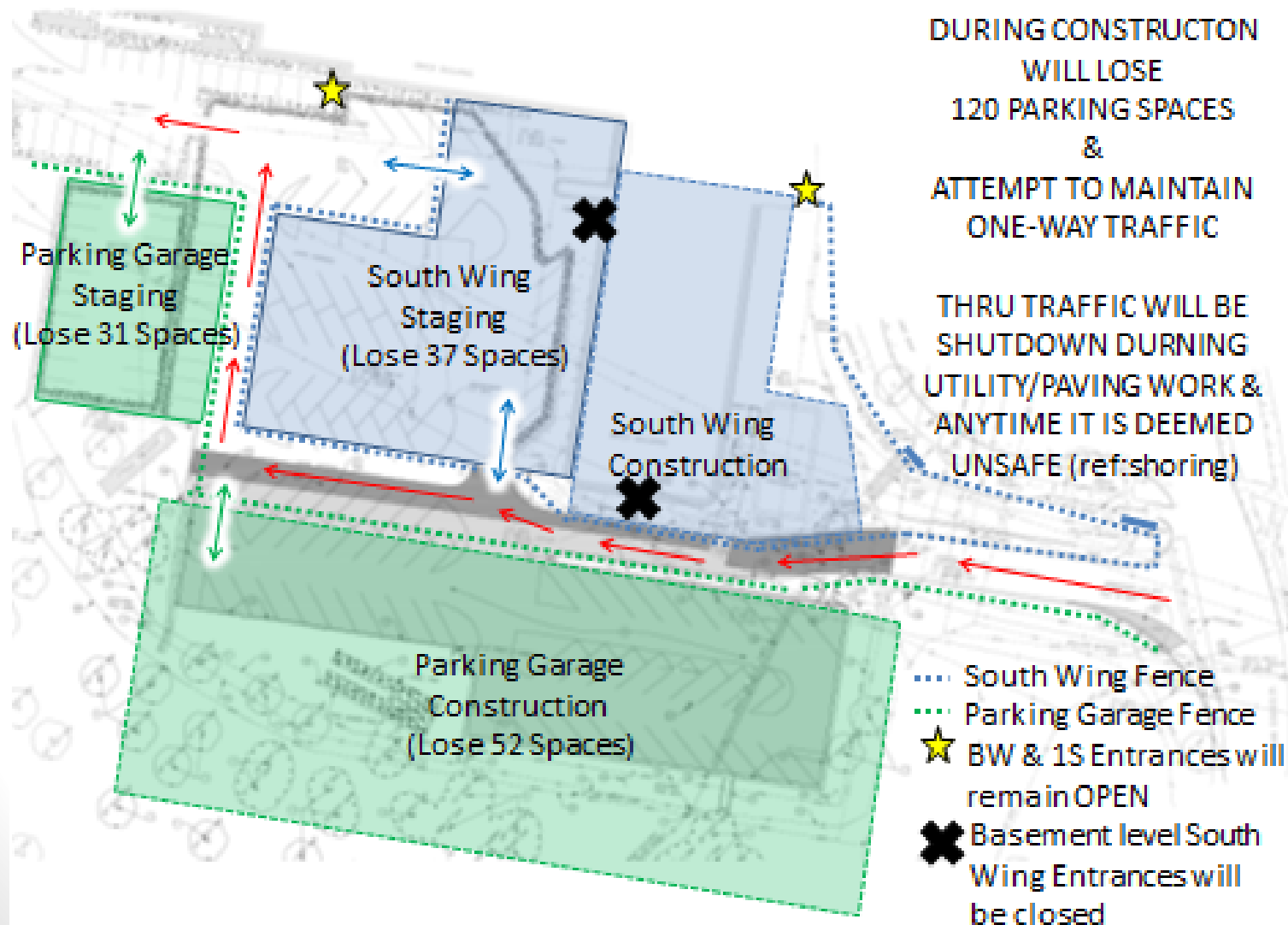
1 – 127 Spaces

B – 108 Spaces (@ Grade)

SB – 113 Spaces (Below Grade)

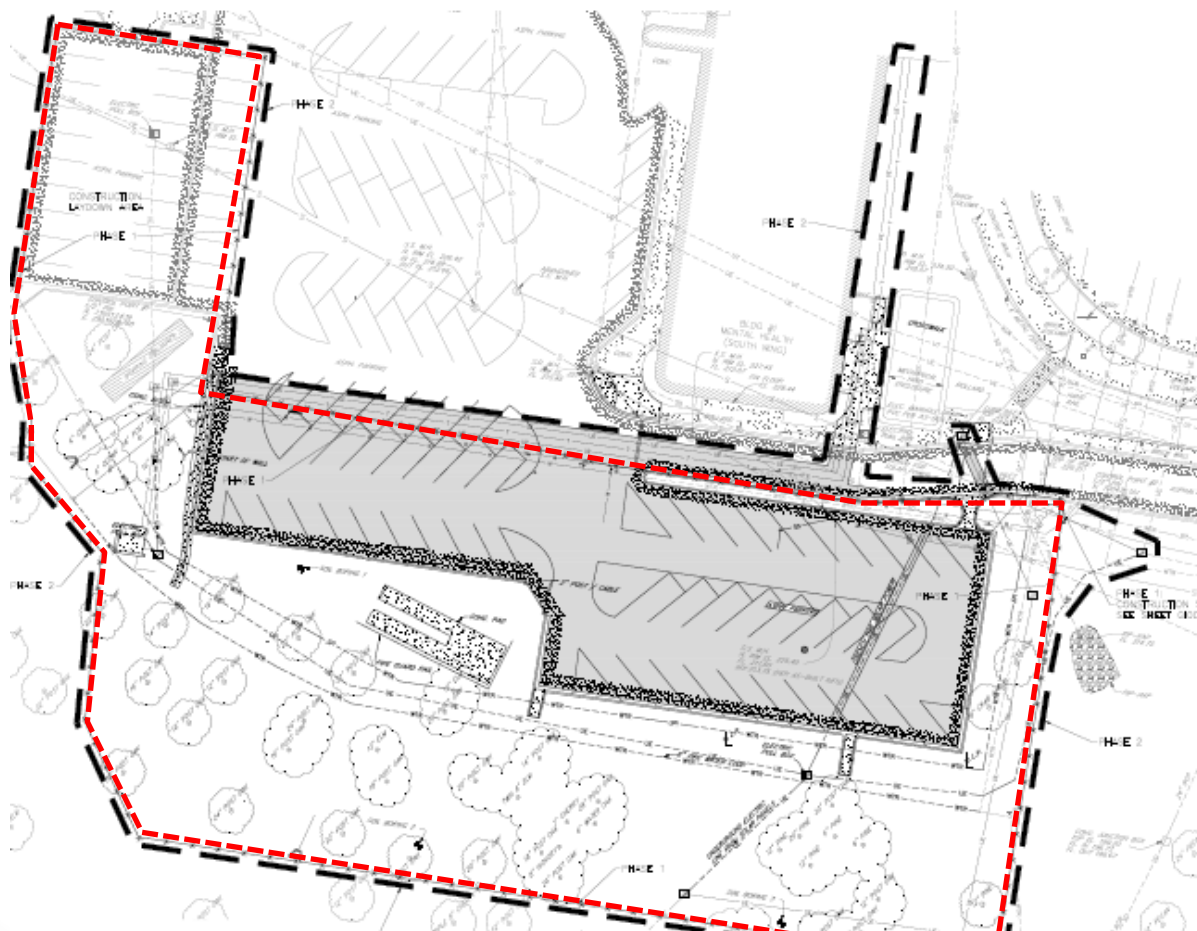
Phasing / Project Coordination

MINOR CONSTRUCTION PROJECT IMPACTS: FY15



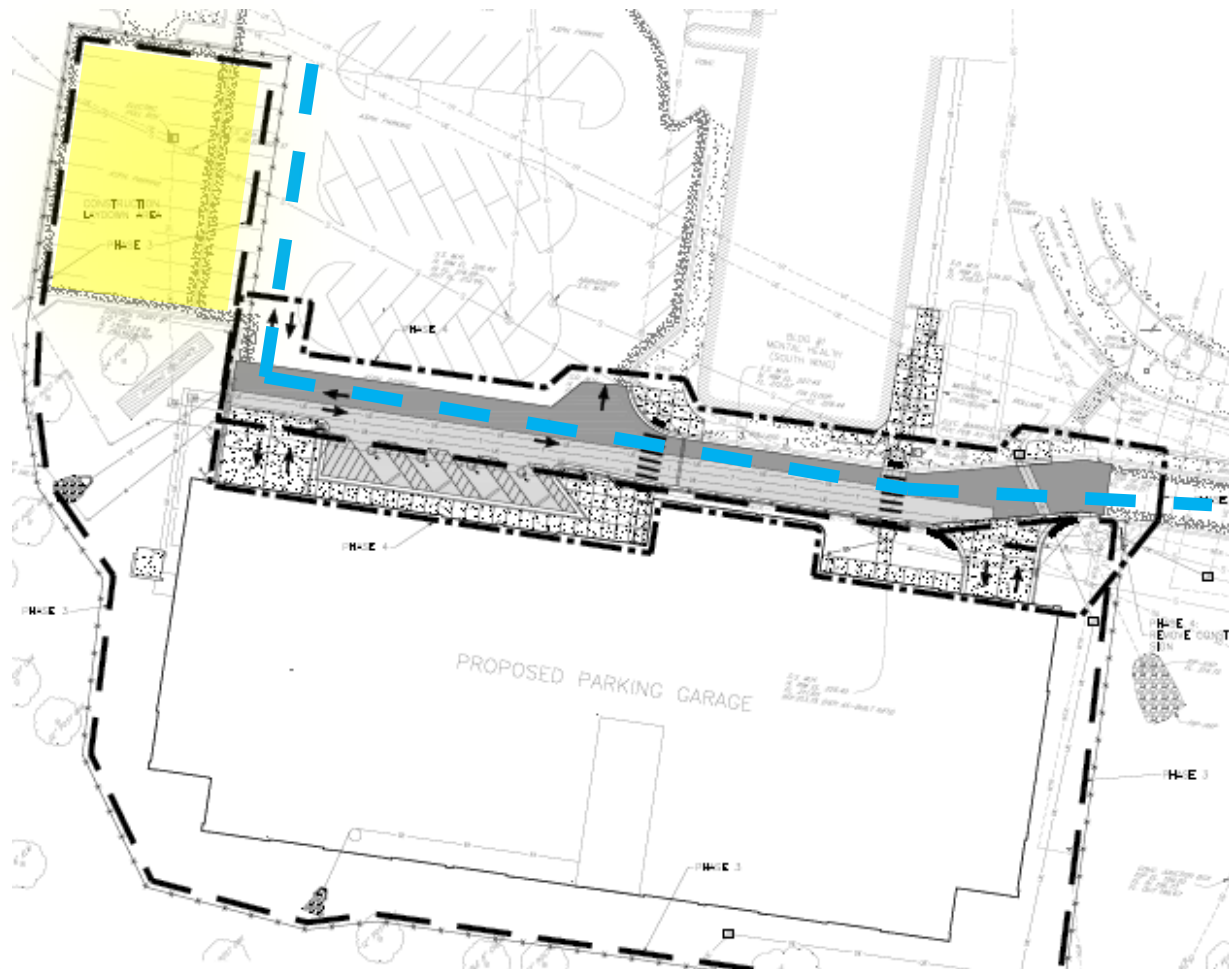
Phasing / Project Coordination

- **PHASE 1: Mobilization, Construction Fence, Utility Survey & Plan**
- **PHASE 2: Utility Installation & Relocation**



Phasing / Project Coordination

- **PHASE 3: Construct Parking Garage**
- **PHASE 4: Finish Roadway & Access Points**





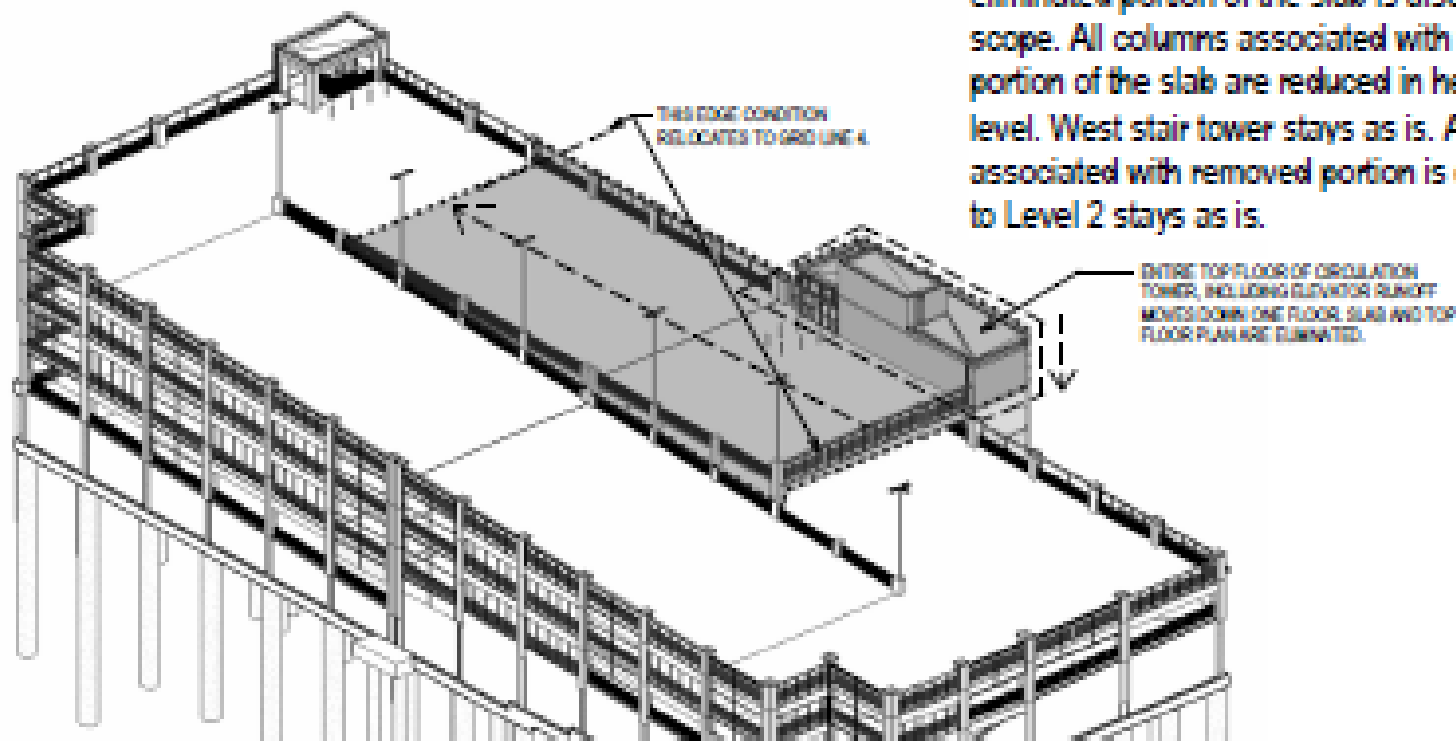
Deduct Alternate A: Delete brick face from columns

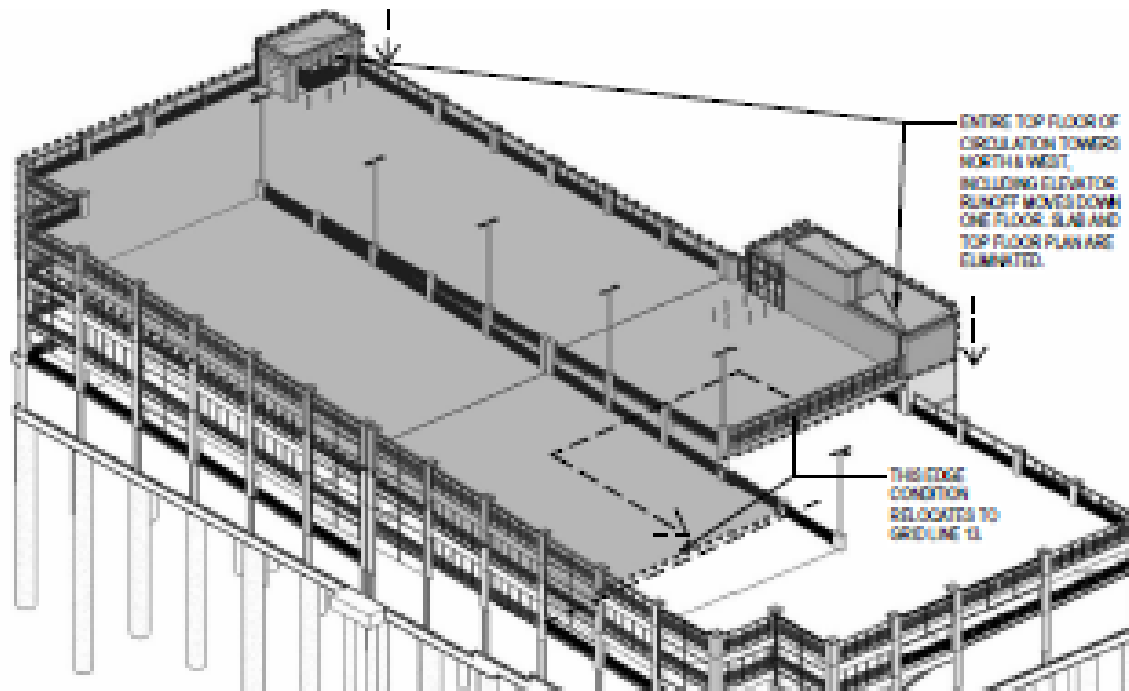
Deduct Alternate B: Delete Wire Mesh Protective Screening

DEDUCT ALTERNATE C

DEDUCT 1/3 OF TOP LEVEL OF GARAGE

Eliminate floor slab on top floor slab from grid line 4 to east. Reduce north elevator tower by one floor. All lighting, power, plumbing, security associated with eliminated portion of the slab is also eliminated from scope. All columns associated with the eliminated portion of the slab are reduced in height by one floor level. West stair tower stays as is. All mesh screening associated with removed portion is eliminated. Ramp to Level 2 stays as is.





DEDUCT ALTERNATE D DEDUCT TOP LEVEL OF GARAGE

Eliminate entire top level slab of the garage. Remove top ramp from grid line 13 to west. Reduce both elevator/stair towers by one level. All lighting, power, security, plumbing associated with top story are removed from scope. All top floor lighting moves down one level. Both elevators are reduced by one floor level in travel. All mesh screening associated with the eliminated level is also eliminated from scope. Fire protection: standpipes are no longer required

SOUTHEAST ISOMETRIC VIEW



Eliminate elevator cab #2 and its corresponding equipment. Construct elevator shaft, hoist beam and other architectural and structural elements as per drawings and specifications. Infill entry openings with CMU block wall matching the surrounding wall and in such a way that can clearly be reopened at future installation time.

Schedule

- **BIDS DUE / OPENING: Feb 26, 2015**
 - S-D V-O S-B
 - LOW BID..... 12 Bid Items
- **AWARD: By Mar 31, 2015**
- **NTP: ASAP**
- **PERFORMANCE PERIOD: 300 Days (Phases 1 – 4)**
 - **NOTE: South Wing Construction Award planned for Fall 2015**

QUESTIONS:

- Direct all questions in writing to Cynthia Kinsman via email, Cynthia.Kinsman@va.gov