

three inches = one foot
one and one half inches = one foot
one inch = one foot
three quarters inch = one foot
one half inch = one foot
three eighths inch = one foot
one quarter inch = one foot
one eighth inch = one foot

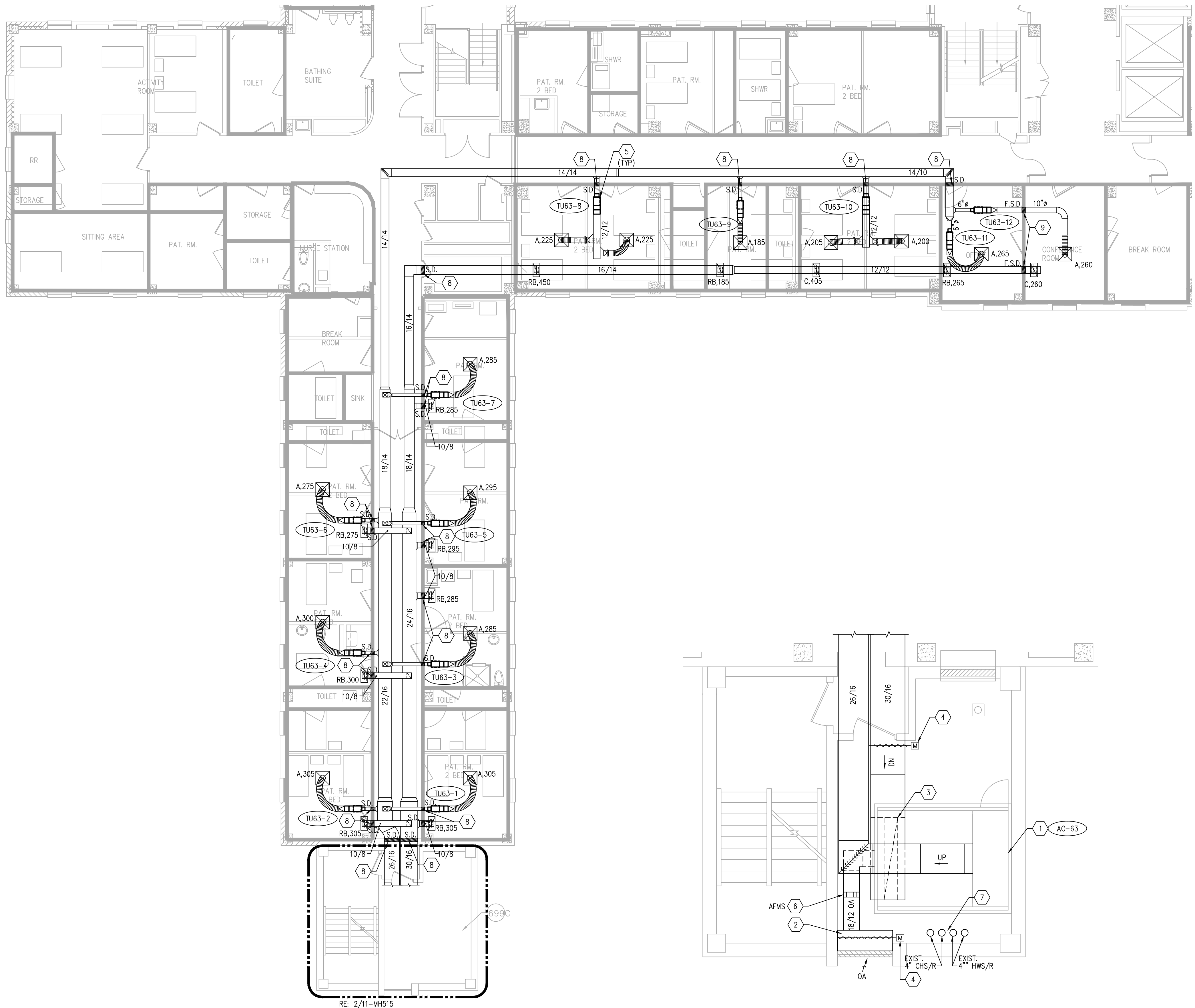
INCLUDE A LINE ITEM COST ALLOWANCE IN BID FOR LOW VOLTAGE POWER CIRCUIT AND FIRE ALARM AND SMOKE DETECTION INTERLOCK. REFER TO SPECIFICATION 23 31 00

GENERAL NOTES

1. ALL EXISTING LAYOUTS INDICATED ON THESE DOCUMENTS ARE BASED ON INFORMATION AVAILABLE AND MAY INCLUDE INACCURACIES AND BE INCOMPLETE.
2. CONTRACTORS SHALL BE SOLELY RESPONSIBLE FOR VERIFYING ACTUAL CONDITIONS AT THE SITE AND NOTING ALL DISCREPANCIES TO THE OWNER PRIOR TO WORK COMMENCEMENT; THEREAFTER, THE CONTRACTOR ACCEPTS FULL RESPONSIBILITY FOR ALL EXISTING CONDITIONS AND SHALL BE SOLELY RESPONSIBLE FOR MAKING ALL SUITABLE ADJUSTMENTS NECESSARY TO ACCOMMODATE NEW WORK AT NO ADDITIONAL COST TO THE OWNER. ANY SUCH ADJUSTMENTS SHALL BE COORDINATED WITH THE OWNER AND ENGINEER.
3. CONTRACTOR SHALL COORDINATE ALL WORK WITH OTHER TRADES AND INCLUDE ALL NECESSARY MODIFICATIONS TO ACCOMMODATE THEIR WORK.
4. ALL EQUIPMENT AND MATERIALS INDICATED TO BE REUSED OR RELOCATED SHALL BE CLEANED AND REPAIRED OF ANY DAMAGE INCURRED AS A RESULT OF REMOVAL PRIOR TO RE-INSTALLATION.
5. ALL EXISTING MECHANICAL SYSTEMS THAT REQUIRE REMOVAL AND RELOCATION AS A RESULT THE NEW CONSTRUCTION SHALL REMAIN IN SERVICE, AS PER THE ORIGINAL DESIGN INTENT, FOLLOWING COMPLETION OF THE ADDITION CONSTRUCTION.
6. ACTIVE HVAC EQUIPMENT DUCTS, PIPING, ELECTRICAL, ETC. NOT SHOWN NOR INDICATED SHALL REMAIN.
7. CONTRACTOR SHALL PATCH AND REPAIR ALL WALLS, FLOORS, CEILINGS, ETC. THAT ARE AFFECTED BY THE NEW WORK; PATCHING MATERIALS AND FINISH SHALL MATCH THE EXISTING OR NEW WORK IN THE IMMEDIATE VICINITY.
8. ALL APPURTENANCES, EQUIPMENT, AND LABOR NOT SPECIFICALLY CALLED FOR IN THESE DRAWINGS OR SPECIFICATIONS, BUT NECESSARY TO FULFILL THE DESIGN INTENT OF THE SAME, SHALL BE CONSIDERED INCIDENTAL TO THE WORK SCOPE AND THEREBY REQUIRED BY THE CONTRACTOR.
9. CONTRACTOR SHALL PROVIDE PERMANENT ACCESS TO ALL EQUIPMENT LOCATED IN NON-ACCESSABLE AREAS. THIS INCLUDES, BUT IS NOT LIMITED TO DAMPERS INSTALLED ABOVE NON-LAY IN CEILINGS.



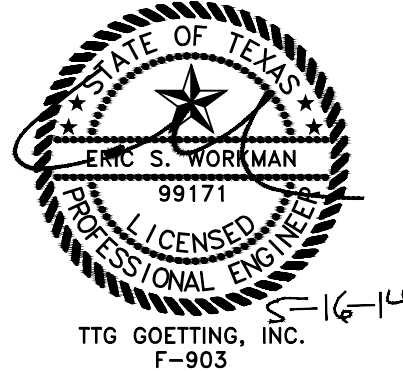
KEYED NOTES

- 1 AC-63 IS EXISTING TO REMAIN. CONTRACTOR SHALL FIX RETURN AIR DAMPER ON UNIT IN THE 100% OPEN POSITION AND DISABLE ITS CONTROLS. ALL DUCT CONNECTIONS TO UNIT SHALL BE WITH CANVAS TYPE FLEXIBLE DUCTWORK. MAINTAIN ALL FACTORY REQUIRED CLEARANCES TO UNIT. EXISTING CHILLED & CONDENSATE PIPING TO REMAIN.
- 2 INSTALL SHEET METAL PLENUM BOX FULL WIDTH OF LOUVER OPENING (APPROX. 48") X 22" HIGH X 18" DEEP. ENSURE BOTTOM OF PLENUM IS SLOPED TOWARD EXTERIOR. PROVIDE 3/4" DRAIN AND BALL VALVE IN BOTTOM OF BOX AT LOWEST POINT OF SLOPE.
- 3 CONSTRUCT SHEET METAL PLENUM FULL SIZE OF UNIT OPENING. CONNECT OUTSIDE AIR AND RETURN AIR DUCTWORK TO PLENUM AS SHOWN.
- 4 MECHANICAL CONTRACTOR TO INSTALL MOTORIZED CONTROL DAMPER IN DUCTWORK. CONTROLS CONTRACTOR TO PROVIDE AND INSTALL ACTUATOR ON DUCT MOUNTED DAMPER.
- 5 SUSPEND TERMINAL UNIT FROM STRUCTURE WITH ALL-THREAD AND VIBRATION ISOLATORS. RE: MECHANICAL DETAILS FOR ADDITIONAL INFORMATION. ENSURE ALL SERVICE CLEARANCES ARE MAINTAINED.
- 6 INSTALL AIRFLOW MEASURING STATION IN 18/12 OUTSIDE AIR DUCTWORK.
- 7 RE: 11-MP515 FOR HYDRONIC PIPING LAYOUT.
- 8 PROVIDE AND INSTALL SMOKE DAMPER IN RATED WALL ASSEMBLY.
- 9 PROVIDE AND INSTALL COMBINATION FIRE/SMOKE DAMPER IN RATED WALL ASSEMBLY.



1 NEW WORK FLOOR PLAN - AC-63
SCALE: 1/8"=1'-0"

2 ENLARGED MECHANICAL ROOM FLOOR PLAN - AC-63
SCALE: 1/4"=1'-0"

Revisions:		Date	
CONSULTANTS:		ARCHITECT/ENGINEERS:	
		 Goetting & Associates, Inc. 12710 Research Blvd., Suite 355 Austin, Texas 78759 512/416-1654 FAX: 512/416-7547	
			
		Approved: Assistant Director	
		Approved: Chief of Staff	
		Approved: Chief, Engineering	
		Approved: Service Chief	
		Approved: Chief, Bio-Med	
		Approved: Chief, EMS	
		Approved: Chief, Infection Control	
		Approved: Chief, IT	
		Approved: Chief, M&O	
		Approved: Chief, Police	
		Approved: Chief, Safety	
		Approved: Chief	
		Approved: Chief	
		Drawing Title	
		SIXTH FLOOR MECHANICAL FLOOR PLAN AC-63 NEW WORK	
		Location	
		Kernville Veterans Hospital Veterans Affairs 2600 Memorial Blvd. Kernville, TX 78028	
		Project Name	
		KD AIR HANDLER REPLACEMENT (AHU) PROJECT - PHASE II	
		Project Number	
		671A-09-110	
		Date	
		07-15-13	
		Drawing Number	
		11-MH515	
		Building Number	
		11	
		Checked	
		ESW	
		Drawn	
		PJR	
		Dwg. of	
		Office of Construction and Facilities Management	
		