



1010 Kings Highway South  
Building Two – 2nd Floor  
Cherry Hill, NJ 08034

Phone: 856-429-4000  
Fax: 856-429-5002  
E-mail: office@miller-remick.com

## Request for Information

Contractor RFI No.: **1** Request Date: **1/12/15**  
Contractor/Supplier: **Matt Welch, Welch Construction**  
M-R RFI Log No.: **14** Response Date: **2/02/15**  
VA Project No.: **528-13-C-0179** M-R Project No.: **3-0499-0046**  
Project Name: **Renovate 6B Ward Syracuse VAMC**

RFI: (Attachments ☒ Yes ☐ No)

1. Please clarify or provide wiring schematic to control 2 lights fed from 2 different sources using one low voltage occupancy switch as called out for in room B614 drawing EL-101.
2. Please clarify or provide wiring schematic to control 2 lights fed from 2 different sources using one wall mounted occupancy switch as called out for in room B617 drawing EL-101.
3. Please provide basis of design make or model for type A1 fixture using all T-8 lamps.

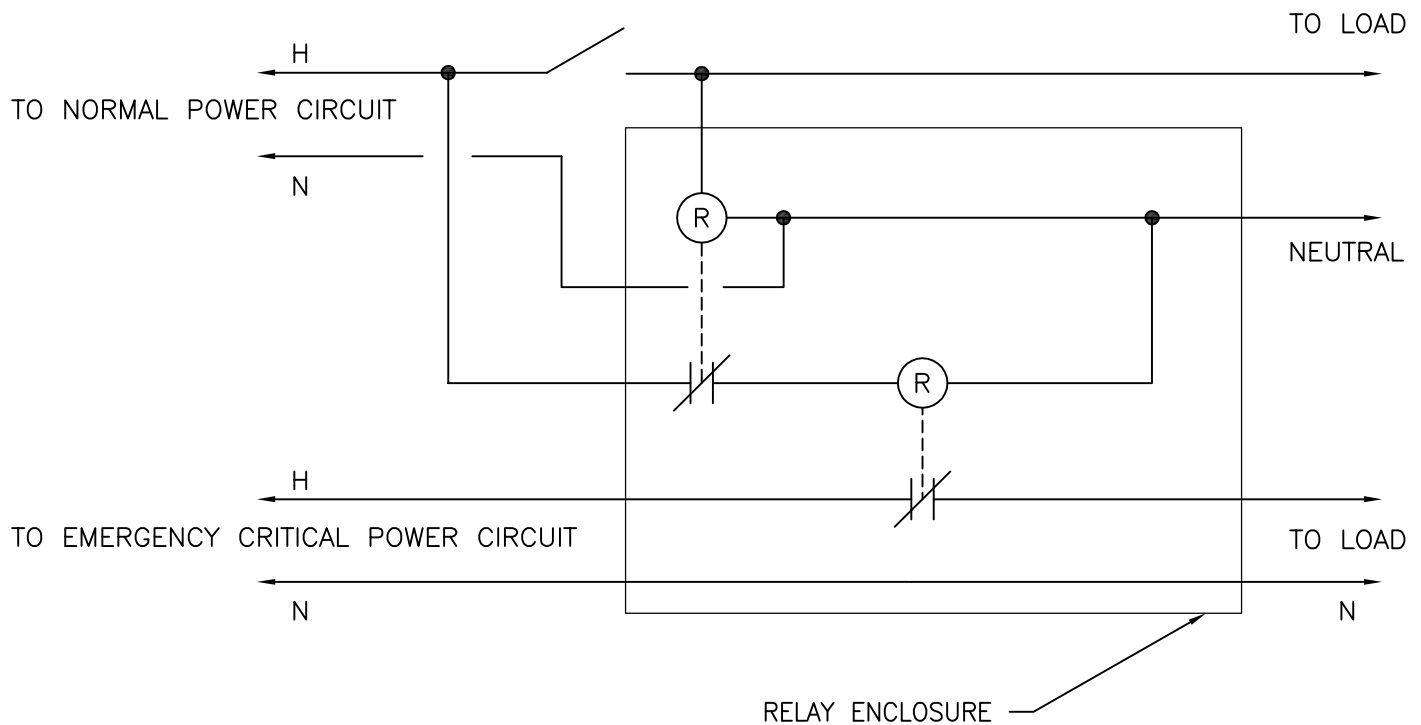
### RFI Response:

1. See sketch SKEP-503-01 (attached) for wiring diagram. Low voltage switch and ceiling mounted occupancy sensor have been removed. They have been replaced with a wall mounted occupancy sensor with a manual override. This change affects rooms B610, B614 (switch in this room shall be moved to south wall beyond door swing), A602, and B601.
2. See sketch SKEP-503-01 (attached) for wiring diagram. Ceiling mounted occupancy sensor has been removed. Wall switch has been replaced with a wall mounted occupancy sensor with a manual override. This change affects rooms B606 and B617.

3. See answer to RFI #11 previously issued.

Daniel Read, Electrical Designer

2/02/15






**NOTES:**

1. RELAY CONFIGURATION SHALL ALLOW ONE SINGLE POLE SWITCH TO CONTROL BOTH NORMAL AND EMERGENCY CRITICAL LIGHTING FIXTURES. CONTACTS ARE CLOSED IN DE-ENERGIZED STATE.
2. IN THE EVENT OF A LOSS OF NORMAL POWER, THE EMERGENCY CRITICAL LIGHTING SHALL BE SHUNTED ON AUTOMATICALLY FOR THE DURATION OF THE POWER OUTAGE. LIGHTING SHALL RETURN TO ITS LAST SETTING (ON OR OFF) UPON RESTORATION OF NORMAL POWER.
3. PROVIDE IN NEMA 1 ENCLOSURE WITH STEEL BARRIER TO SEPARATE NORMAL AND EMERGENCY POWER.

## EMERGENCY CRITICAL LIGHTING FIXTURE SWITCHING CONTROL SCHEMATIC

2

SCALE: NOT TO SCALE

DRAWN BY DRR	 <div><b>Miller-Remick LLC</b> M.E.P. &amp; Structural Engineering A Service Disabled Veteran Owned Small Business</div>	1010 KINGS HIGHWAY SOUTH CHERRY HILL, NEW JERSEY 08034 PHONE: (856)429-4000 FAX: (856)429-5002	
APPROVED BY MB			
CLIENT PROJ. No. 528A7-13-745	PROJECT/SKETCH TITLE  RENOVATION FOR 6B WARD DETAIL NO 2 CHANGE – EMERGENCY CRITICAL LIGHT FIXTURE SWITCHING CONTROL SCHEMATIC	DWG NO.  SKEP-503-01	 Department of Veterans Affairs
MR PROJ. No. 0499-0046			
ISSUE DATE 2015-02-03	ISSUE TITLE RFI RESPONSE		