

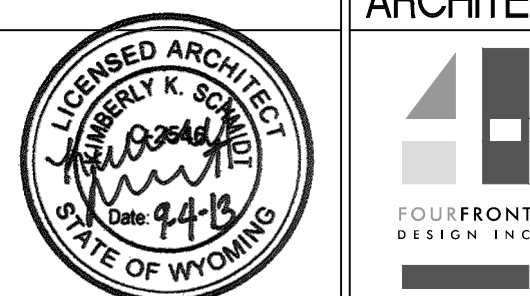



1 Overall Plan
1" = 100'-0"

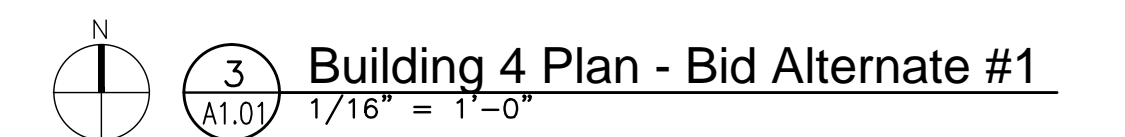
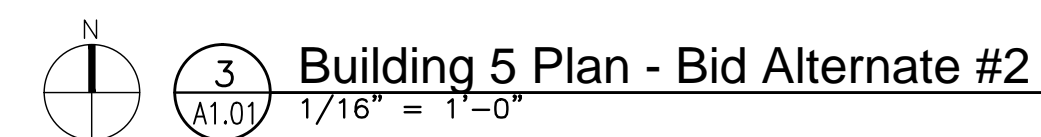
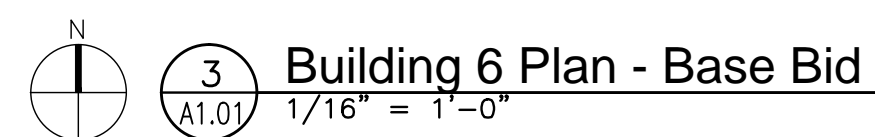
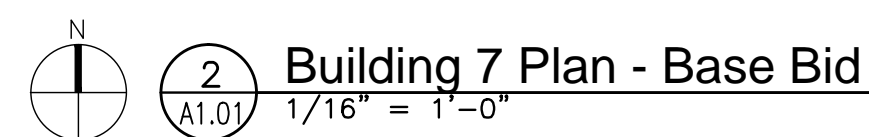
2 Building 9 Plan - Base Bid
1/16" = 1'-0"

3 Building 8 Plan - Base Bid
1/16" = 1'-0"

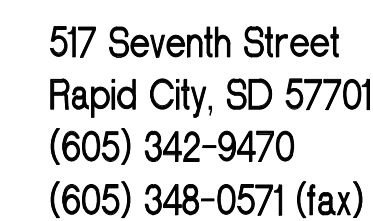
For Construction

			CONSULTANTS:			ARCHITECT/ENGINEERS:		Drawing Title Reference Plans		Project Title Tramway Fenestration Upgrade		Project Number 666-14-109		Office of Facilities Management	
						517 Seventh Street Rapid City, SD 57701 (605) 342-9470 (605) 348-0571 (fax)		Approved:		Location Sheridan VAMC, Wyoming		Building Number			
Revisions:			Initials		Date			Date 09-04-2013		Checked KS		Drawn BW		Drawing Number A1.00	
												Dwg. 2 of 5			

1. Strip old caulking at windows/columns and re-caulk where visibly damaged. Specifically at all downspout locations and buildings 4, 8, 9.

[illegible]

--	--



Department of
Veterans Affairs

Door Schedule											
Mark	Fire Rating	Width	Height	Panel Type	Frame Type	Glazing Type	Hardware Group	Head	Jamb	Sill	Comments
901		3'-6"	7'-0"	TIG/P	AL-100	AL-FG	1				PROVIDE CONDUIT FOR FUTURE CARD ACCESS, SEE NOTE
801A		3'-6"	7'-0"	TIG	AL-101	AL-FG	2				PROVIDE CONDUIT FOR FUTURE CARD ACCESS, SEE NOTE
801B		3'-6"	7'-0"	TIG	AL-101	AL-FG	2				PROVIDE CONDUIT FOR FUTURE CARD ACCESS, SEE NOTE
701		3'-6"	7'-0"	TIG	AL-101	AL-FG	2				PROVIDE CONDUIT FOR FUTURE CARD ACCESS, SEE NOTE
601		3'-6"	7'-0"	TIG	AL-102	AL-FG	2				PROVIDE CONDUIT FOR FUTURE CARD ACCESS, SEE NOTE
Bid Option #1											
401		3'-6"	7'-0"	TIG	AL-103	AL-FG	2				PROVIDE CONDUIT FOR FUTURE CARD ACCESS, SEE NOTE
Bid Option #2											
501		3'-6"	7'-0"	TIG	AL-102	AL-FG	2				PROVIDE CONDUIT FOR FUTURE CARD ACCESS, SEE NOTE

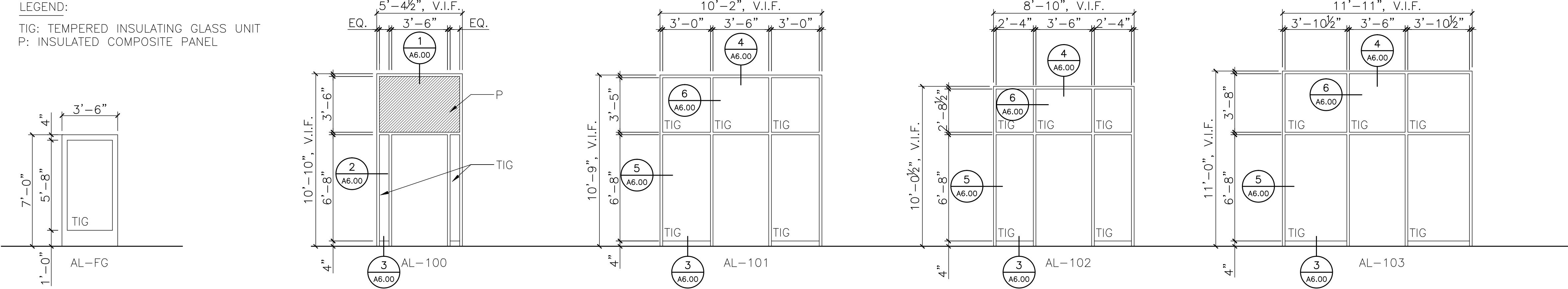
NOTE:

- Replace all broken/chipped composite panels.
- Remove existing ACT and re-install after construction activities.
- Provide 1/2 inch EMT conduit on both the lock side and hinge side for future security hardware.
- Extend conduit approximately 12 inches above existing ceiling.
- Terminate and provide a J-box. Provide cutting and patching at the existing wall.
- Strip old caulking at windows/columns and re-caulk where visbly damaged. Specifically at all downspout locations and buildings 4, 8, 9.

General Notes

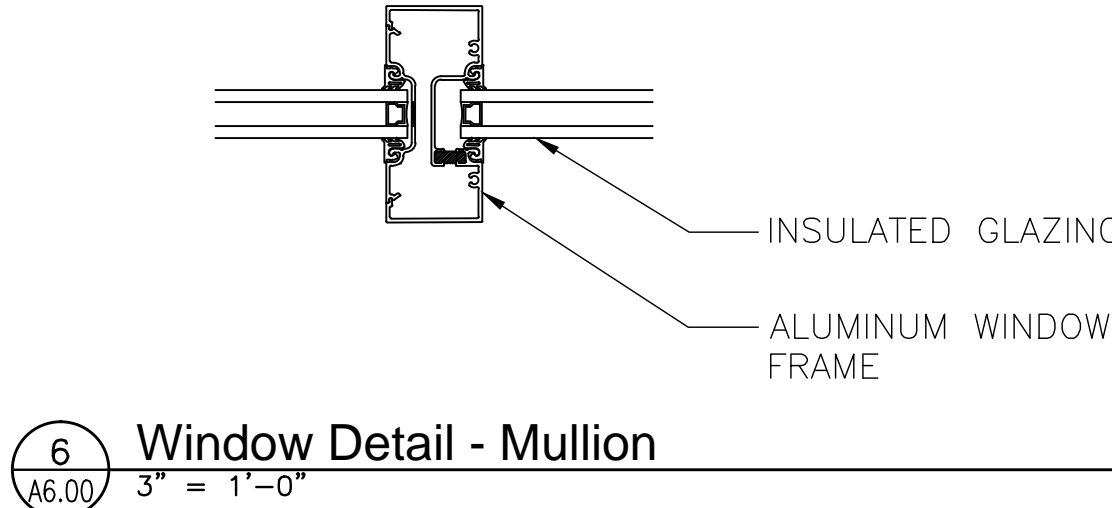
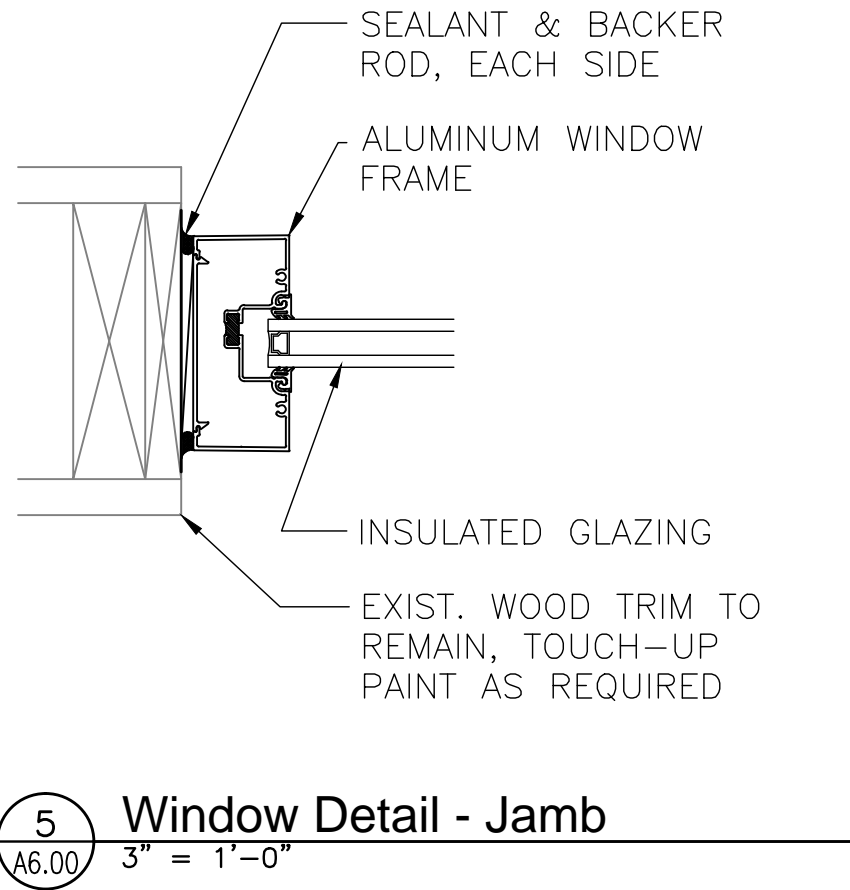
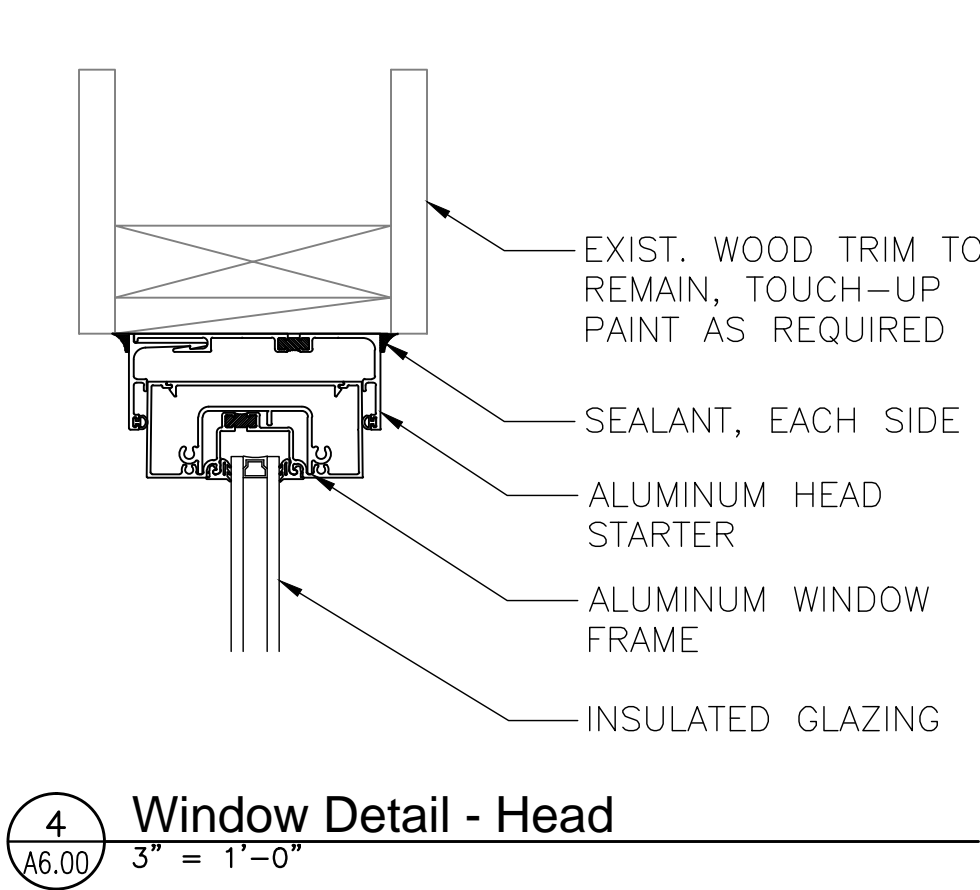
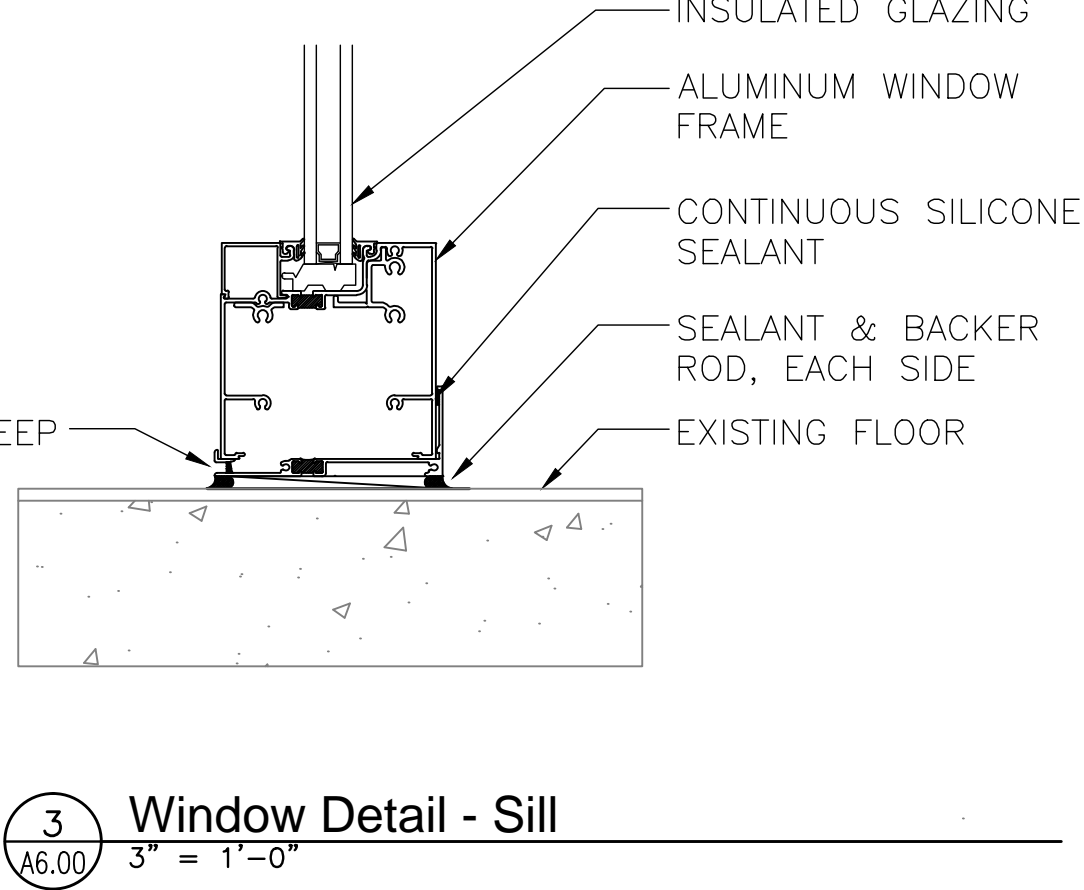
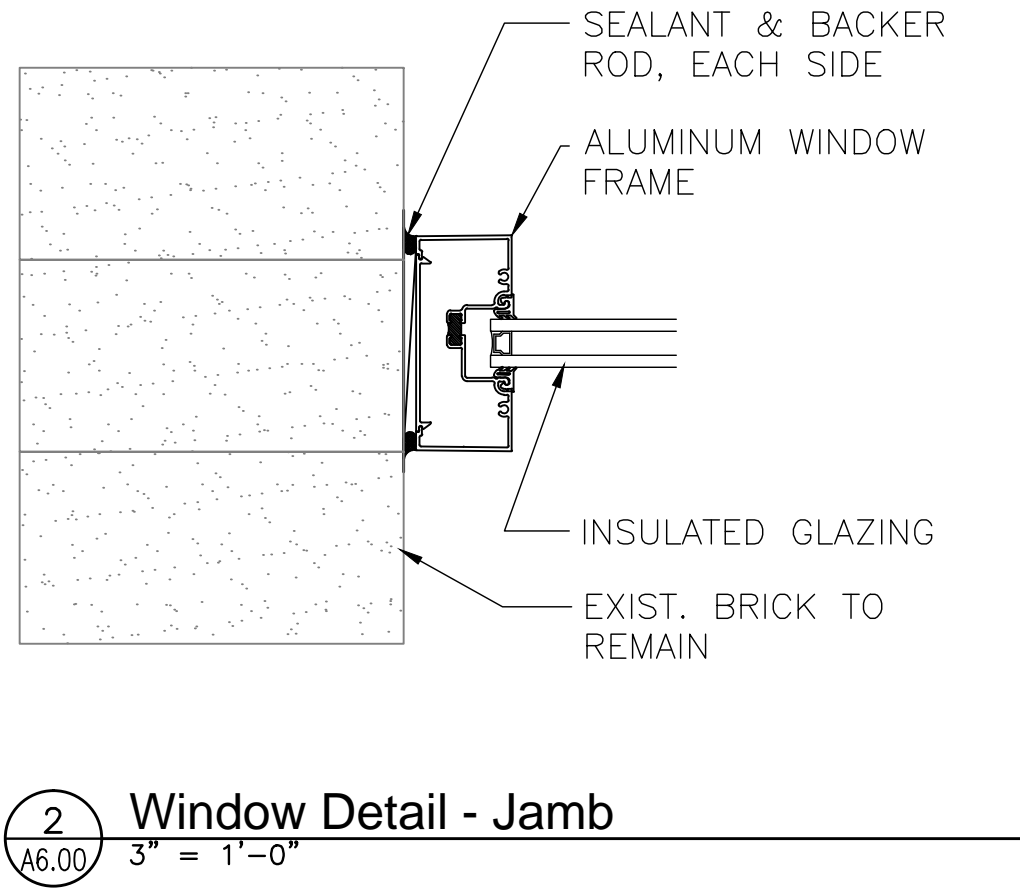
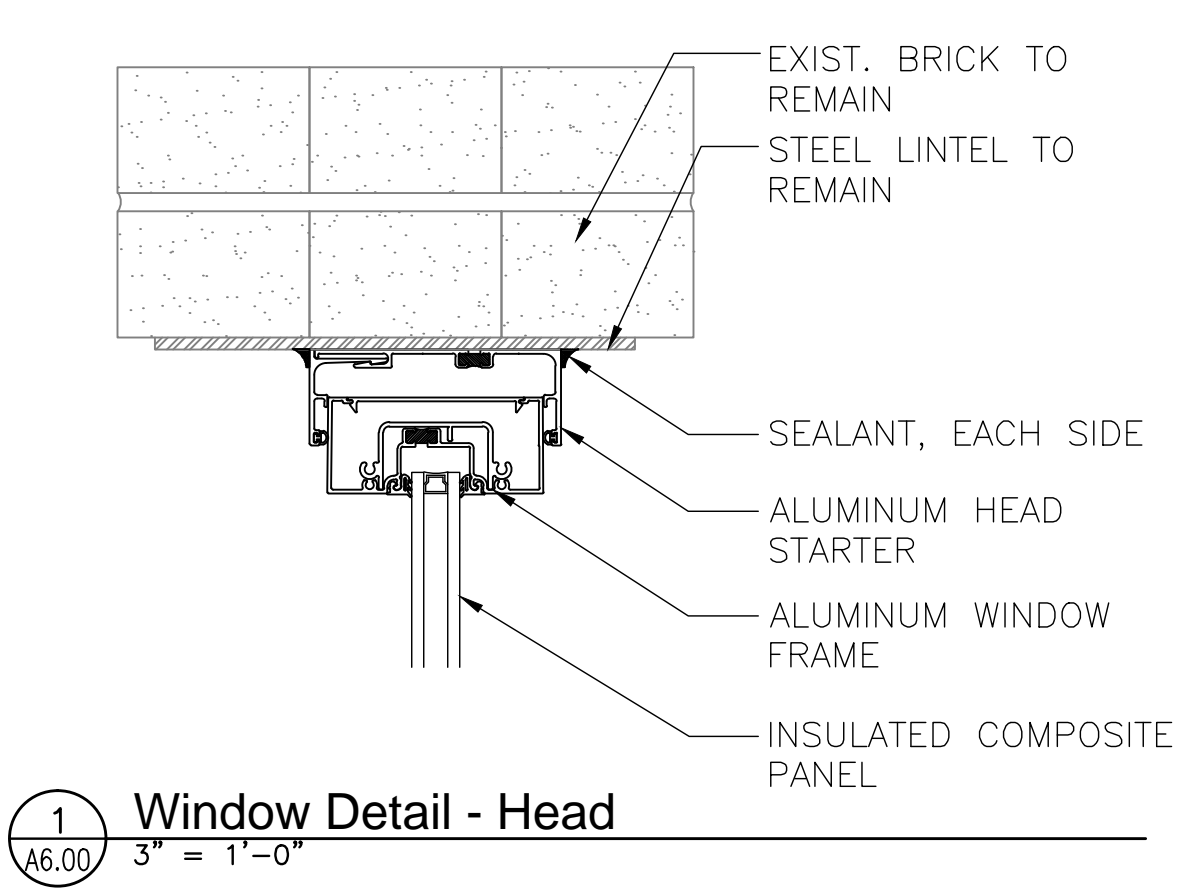
- Installation Preparation Requirements
1. Clean all window openings with mechanical cleaner to remove any loose debris and provide a flush mounting surface.
- Paint Trim Touch-Up
- A. Interior Paint
1. High performance latex. Equal to Sherwin Williams Progreen 200
 2. Low VOC
 3. Color: Match existing surface/sheen
 4. Prep per manufacturers recommendations
 5. Application: Brush. Provide for seamless appearance
- B. Exterior Paint
1. High performance latex. Equal to Sherwin Williams exterior latex
 2. Low VOC
 3. Color: Match existing surface/sheen
 4. Prep per manufacturers recommendations
 5. Application: Brush. Provide for seamless appearance

LEGEND:
TIG: TEMPERED INSULATING GLASS UNIT
P: INSULATED COMPOSITE PANEL



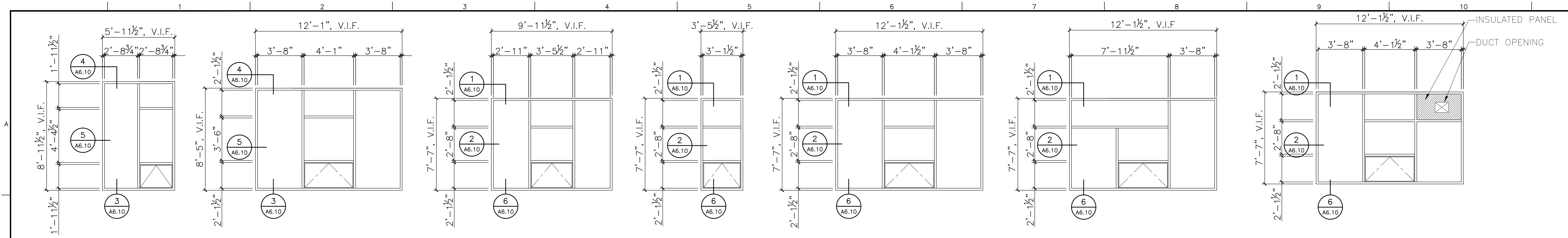
Door Panel Elevations
1/4" = 1'-0"

Frame Elevations
1/4" = 1'-0"

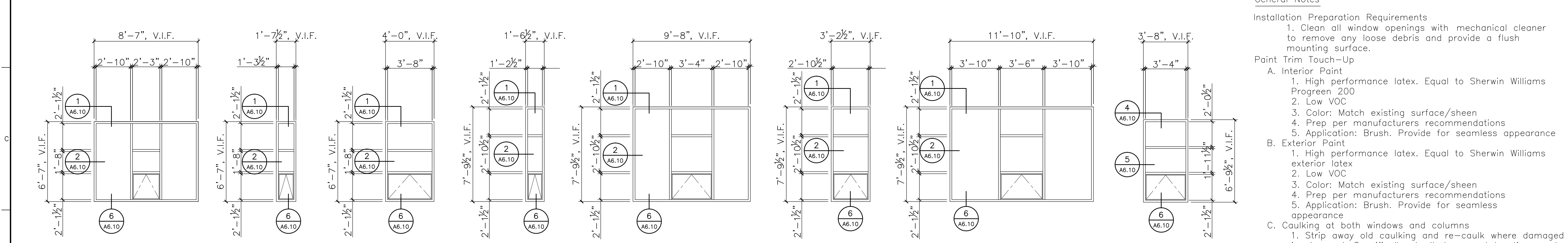


For Construction

			CONSULTANTS:				ARCHITECT/ENGINEERS: 517 Seventh Street Rapid City, SD 57701 (605) 342-9470 (605) 348-0571 (fax)			Drawing Title Door Schedule, Elevations, and Details			Project Title Tramway Fenestration Upgrade			Project Number 666-14-109		Office of Facilities Management																																																																																																																																																																																																																																																																																																																																																																																																																																																																																																																																																																																																																																																																																																																																																																																																																																																																																																																																																																																																																																																																																																																																																																																																																																																																																																																																																																																																																																																																																																																																																																																																																																												
Building Number																																																																																																																																																																																																																																																																																																																																																																																																																																																																																																																																																																																																																																																																																																																																																																																																																																																																																																																																																																																																																																																																																																																																																																																																																																																																																																																																																																																																																																																																																																																																																																																																																																																														
Approved:										Location Sheridan VAMC, Wyoming			Drawing Number A6.00																																																																																																																																																																																																																																																																																																																																																																																																																																																																																																																																																																																																																																																																																																																																																																																																																																																																																																																																																																																																																																																																																																																																																																																																																																																																																																																																																																																																																																																																																																																																																																																																																																																	
										Date 09-04-2013	Checked KS	Drawn BW	Dwg. 4 of 5																																																																																																																																																																																																																																																																																																																																																																																																																																																																																																																																																																																																																																																																																																																																																																																																																																																																																																																																																																																																																																																																																																																																																																																																																																																																																																																																																																																																																																																																																																																																																																																																																																																	
Revisions:			Initials			Date																																																																																																																																																																																																																																																																																																																																																																																																																																																																																																																																																																																																																																																																																																																																																																																																																																																																																																																																																																																																																																																																																																																																																																																																																																																																																																																																																																																																																																																																																																																																																																																																																																																								



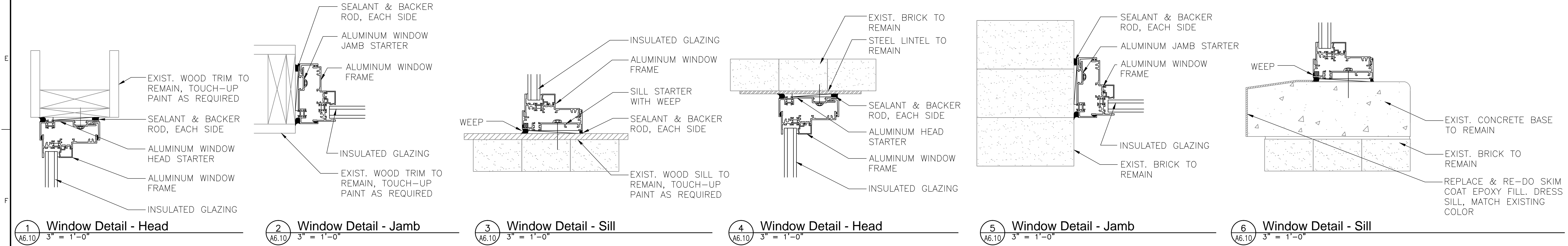
A Aluminum B Aluminum C Aluminum D Aluminum E Aluminum E1 Aluminum E2 Aluminum



F Aluminum Bldg. 5 Only Bid Alternate #2 G Aluminum Bldg. 5 Only Bid Alternate #2 H Aluminum Bldg. 5 Only Bid Alternate #2 J Aluminum Bid Alternate #1 K Aluminum Bid Alternate #1 L Aluminum Bid Alternate #1 M Aluminum Bid Alternate #1 Z Aluminum Bid Alternate #3, 4, 5, 6, 7

NOTE: ALL GLAZING IS TIG: TEMPERED INSULATING GLASS UNIT

Window Elevations
1/4" = 1'-0"



1 Window Detail - Head 3" = 1'-0" 2 Window Detail - Jamb 3" = 1'-0" 3 Window Detail - Sill 3" = 1'-0" 4 Window Detail - Head 3" = 1'-0" 5 Window Detail - Jamb 3" = 1'-0" 6 Window Detail - Sill 3" = 1'-0"

For Construction

			CONSULTANTS:		ARCHITECT/ENGINEERS: 517 Seventh Street Rapid City, SD 57701 (605) 342-9470 (605) 348-0571 (fax)	Drawing Title Window Elevations and Details Approved:	Project Title Tramway Fenestration Upgrade	Project Number 666-14-109 Building Number	Office of Facilities Management
Revisions:		Initials Date							
							Location Sheridan VAMC, Wyoming	Drawing Number A6.10	
							Date 09-04-2013	Checked KS	
							Drawn BW	Dwg. 5 of 5	

Sheridan VAMC

Tramway Fenestration Upgrades

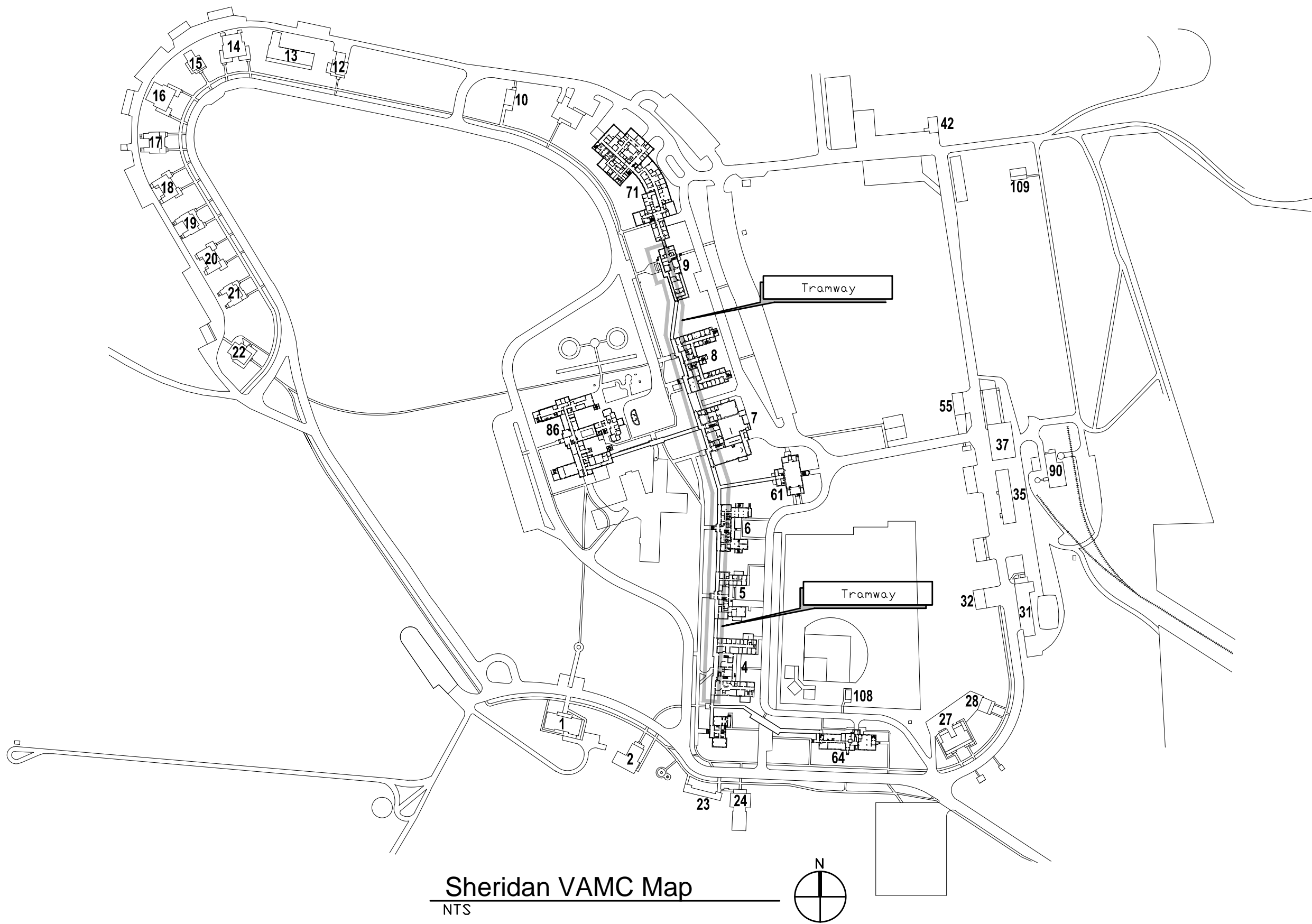
#666-14-109

Sheridan, Wyoming



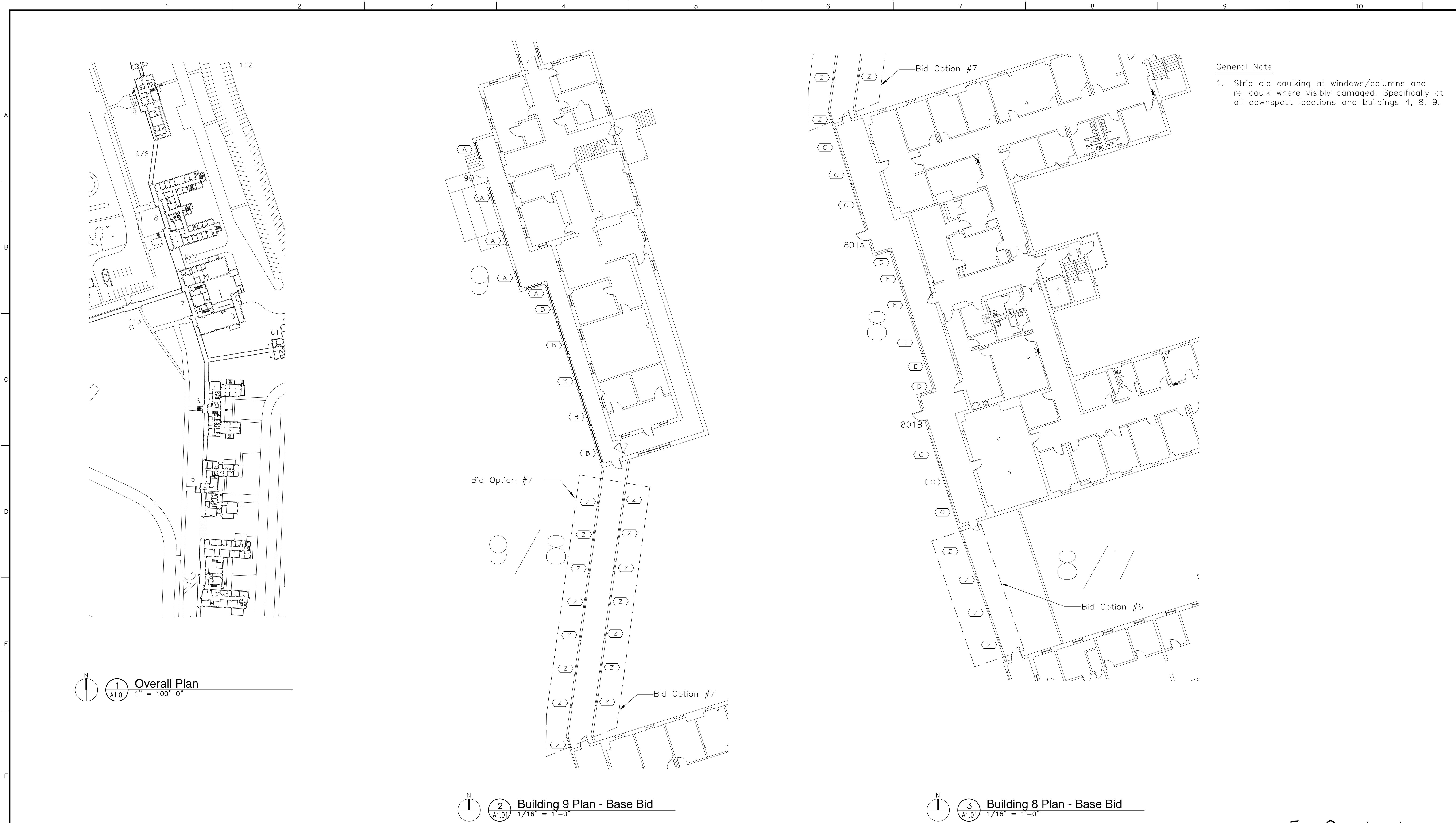
Architectural
FourFront Design
517 7th Street
Rapid City, South Dakota 57701

- Sheet Index:**
- General
G0.00 Cover Sheet and Sheet Index
- Architectural
A1.00 Reference Plans
A1.01 Reference Plans
A6.00 Door Schedule, Elevations and Details
A6.10 Window Elevations and Details



For Construction

<div>Revisions:</div> <table><thead><tr><th></th><th>Initials</th><th>Date</th></tr></thead><tbody><tr><td> </td><td> </td><td> </td></tr><tr><td> </td><td> </td><td> </td></tr><tr><td> </td><td> </td><td> </td></tr><tr><td> </td><td> </td><td> </td></tr></tbody></table>		Initials	Date													CONSULTANTS:	ARCHITECT/ENGINEERS: <div><div></div><div>517 Seventh Street Rapid City, SD 57701 (605) 342-9470 (605) 348-0571 (fax)</div></div>	Drawing Title Cover Sheet and Sheet Index Approved:	Project Title Tramway Fenestration Upgrade Location Sheridan VAMC, Wyoming Date 09-04-2013	Project Number 666-14-109 Building Number Drawing Number G0.00 Dwg. 1 of 5	Office of Facilities Management
		Initials	Date																		
				Checked KS	Drawn BW																

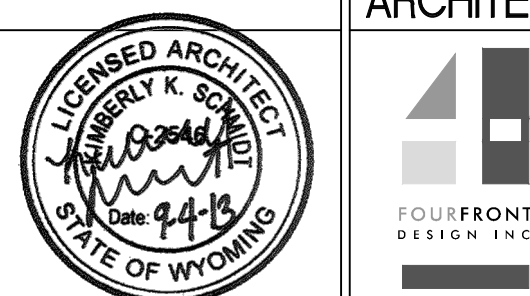




1 Overall Plan
1" = 100'-0"

2 Building 9 Plan - Base Bid
1/16" = 1'-0"

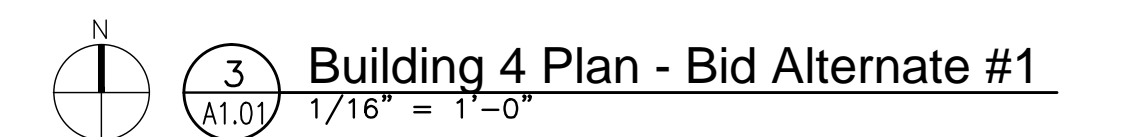
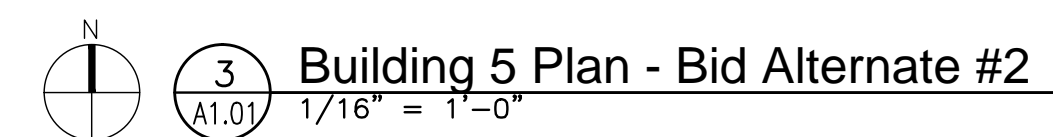
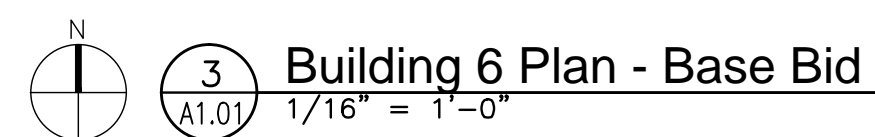
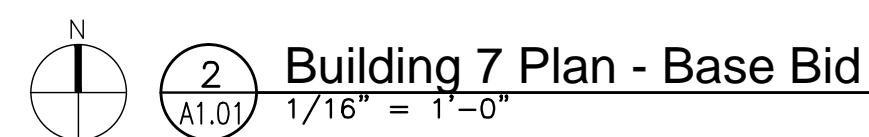
3 Building 8 Plan - Base Bid
1/16" = 1'-0"

For Construction

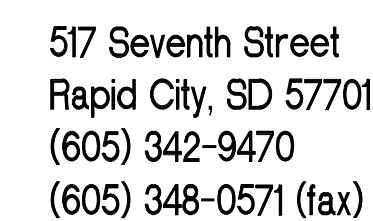
			CONSULTANTS:			ARCHITECT/ENGINEERS:		Drawing Title Reference Plans		Project Title Tramway Fenestration Upgrade		Project Number 666-14-109		Office of Facilities Management		
						 517 Seventh Street Rapid City, SD 57701 (605) 342-9470 (605) 348-0571 (fax)		Approved:		Location Sheridan VAMC, Wyoming		Building Number				
											Drawing Number A1.00				 Department of Veterans Affairs	
											Date 09-04-2013		Checked KS			
Revisions:			Initials		Date						Dwg. 2 of 5					

VA FORM 08-6231, OCT 1978

1. Strip old caulking at windows/columns and re-caulk where visibly damaged. Specifically at all downspout locations and buildings 4, 8, 9.

[illegible]

--



Department of
Veterans Affairs

Door Schedule											
Mark	Fire Rating	Width	Height	Panel Type	Frame Type	Glazing Type	Hardware Group	Head	Jamb	Sill	Comments
901		3'-6"	7'-0"	TIG/P	AL-100	AL-FG	1				PROVIDE CONDUIT FOR FUTURE CARD ACCESS, SEE NOTE
801A		3'-6"	7'-0"	TIG	AL-101	AL-FG	2				PROVIDE CONDUIT FOR FUTURE CARD ACCESS, SEE NOTE
801B		3'-6"	7'-0"	TIG	AL-101	AL-FG	2				PROVIDE CONDUIT FOR FUTURE CARD ACCESS, SEE NOTE
701		3'-6"	7'-0"	TIG	AL-101	AL-FG	2				PROVIDE CONDUIT FOR FUTURE CARD ACCESS, SEE NOTE
601		3'-6"	7'-0"	TIG	AL-102	AL-FG	2				PROVIDE CONDUIT FOR FUTURE CARD ACCESS, SEE NOTE
Bid Option #1											
401		3'-6"	7'-0"	TIG	AL-103	AL-FG	2				PROVIDE CONDUIT FOR FUTURE CARD ACCESS, SEE NOTE
Bid Option #2											
501		3'-6"	7'-0"	TIG	AL-102	AL-FG	2				PROVIDE CONDUIT FOR FUTURE CARD ACCESS, SEE NOTE

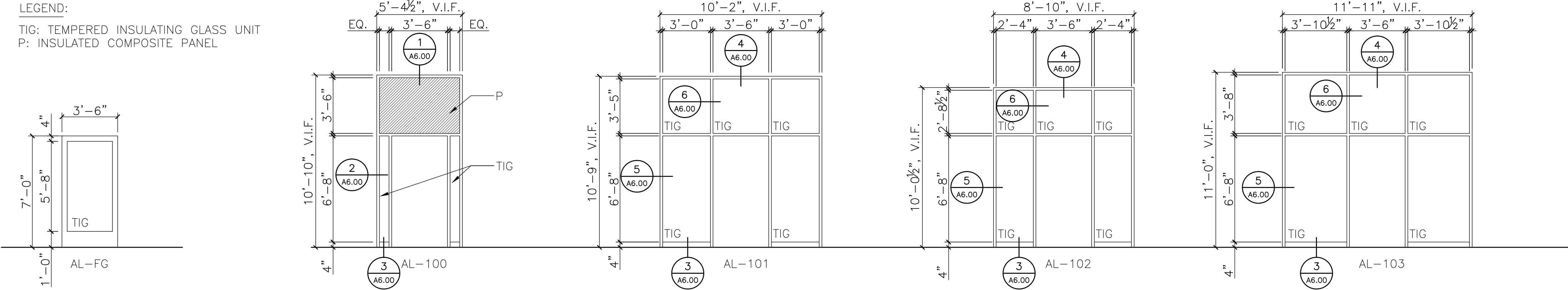
NOTE:

- Replace all broken/chipped composite panels.
- Remove existing ACT and re-install after construction activities.
- Provide 1/2 inch EMT conduit on both the lock side and hinge side for future security hardware.
- Extend conduit approximately 12 inches above existing ceiling.
- Terminate and provide a J-box. Provide cutting and patching at the existing wall.
- Strip old caulking at windows/columns and re-caulk where visbly damaged. Specifically at all downspout locations and buildings 4, 8, 9.

General Notes

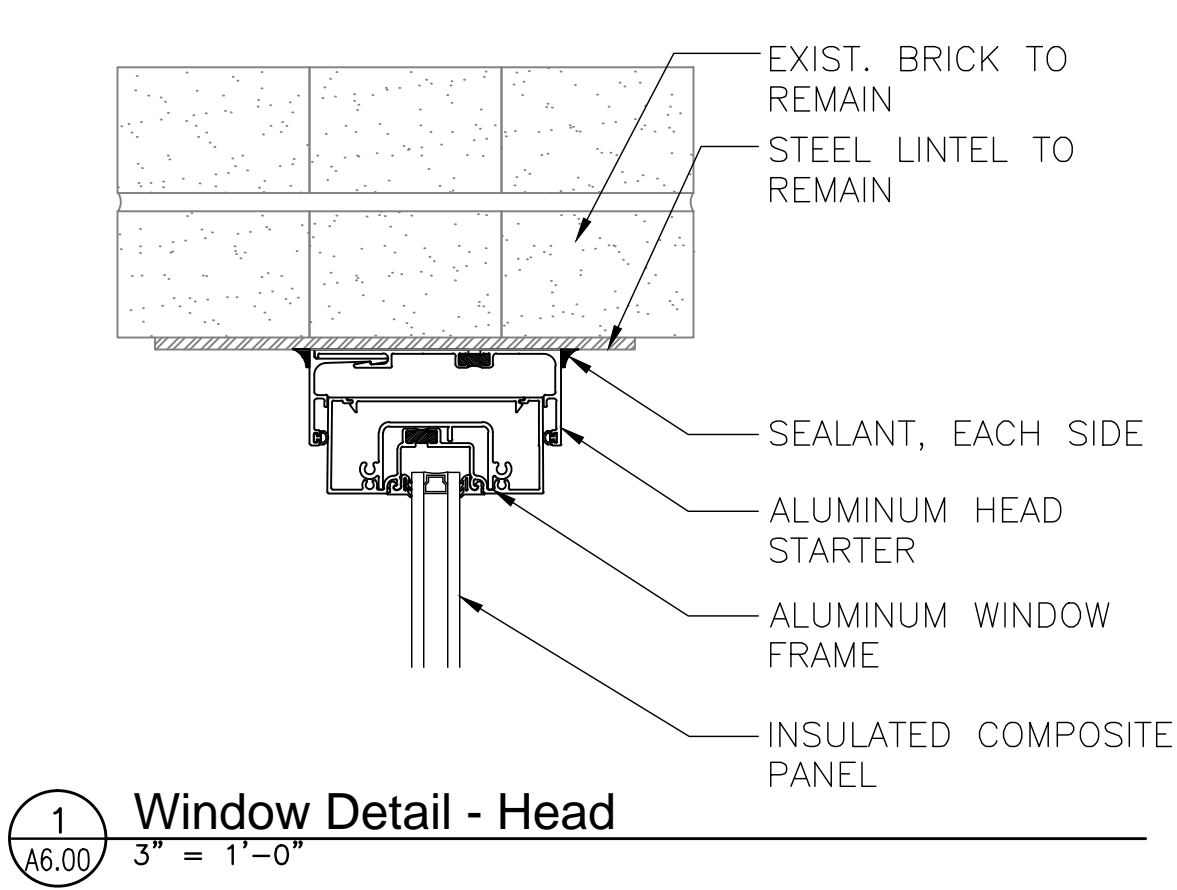
- Installation Preparation Requirements
- Clean all window openings with mechanical cleaner to remove any loose debris and provide a flush mounting surface.
- Paint Trim Touch-Up
- A. Interior Paint
- High performance latex. Equal to Sherwin Williams Progreen 200
 - Low VOC
 - Color: Match existing surface/sheen
 - Prep per manufacturers recommendations
 - Application: Brush. Provide for seamless appearance
- B. Exterior Paint
- High performance latex. Equal to Sherwin Williams exterior latex
 - Low VOC
 - Color: Match existing surface/sheen
 - Prep per manufacturers recommendations
 - Application: Brush. Provide for seamless appearance

LEGEND:
TIG: TEMPERED INSULATING GLASS UNIT
P: INSULATED COMPOSITE PANEL

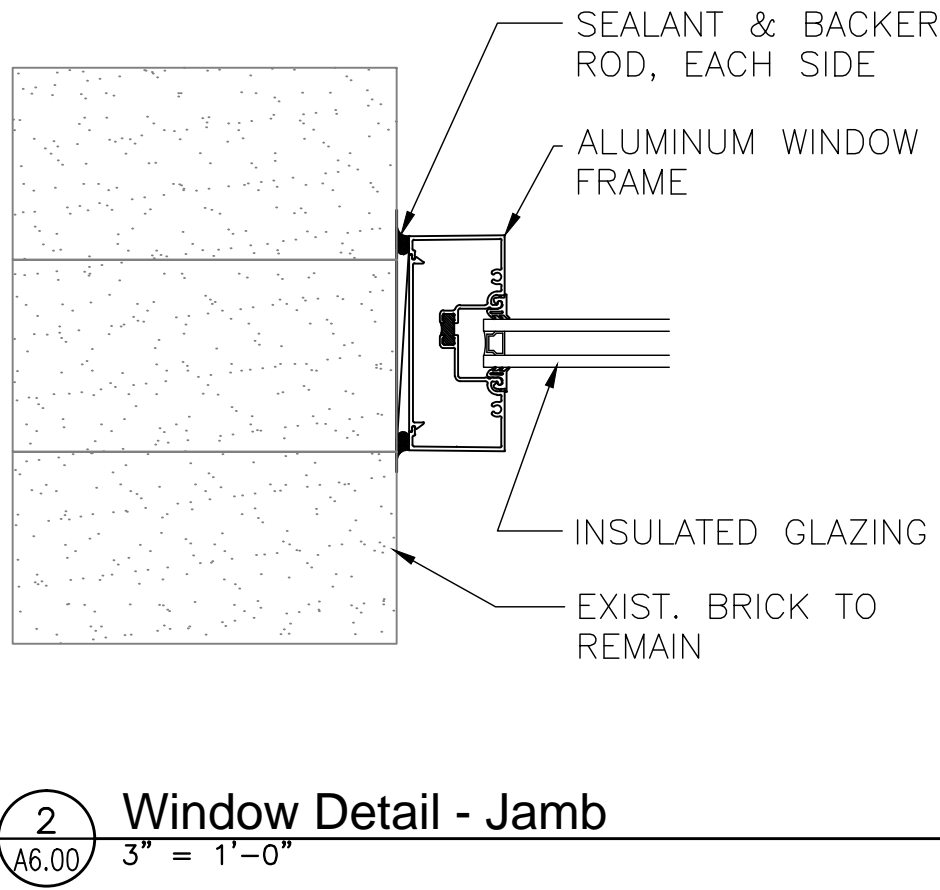


Door Panel Elevations
1/4" = 1'-0"

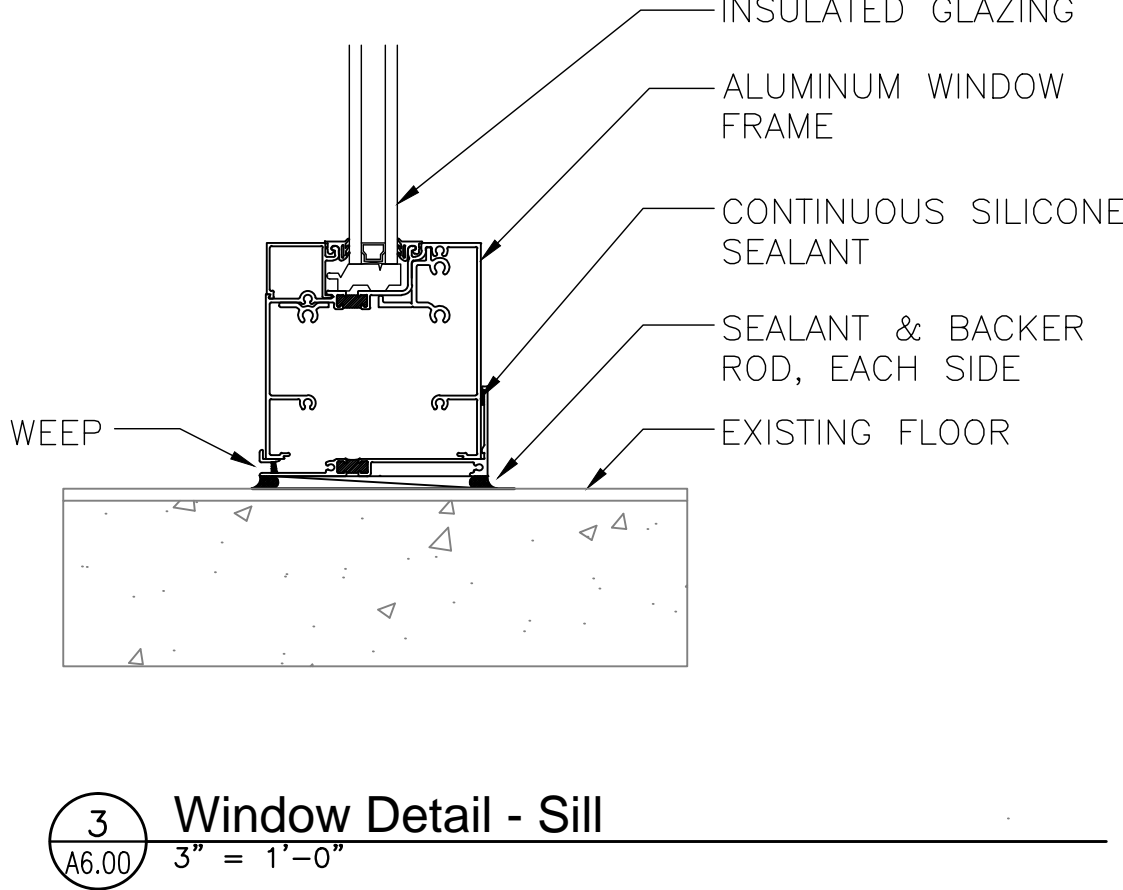
Frame Elevations
1/4" = 1'-0"



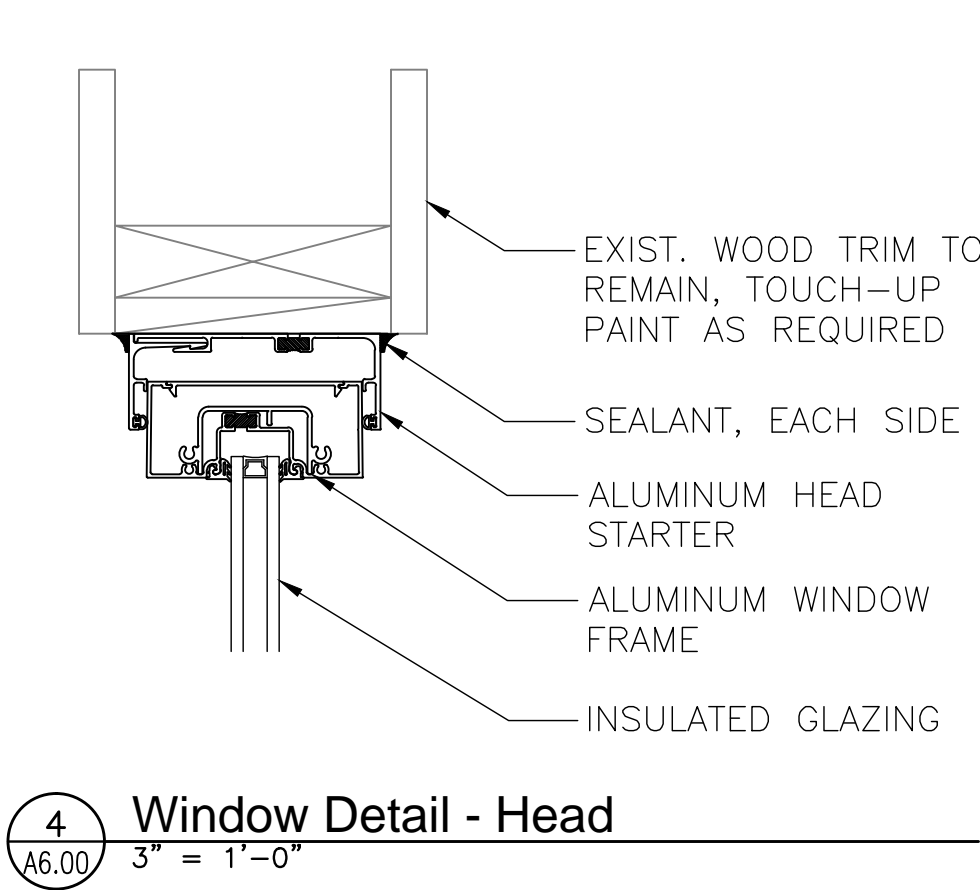
1 Window Detail - Head
3" = 1'-0"



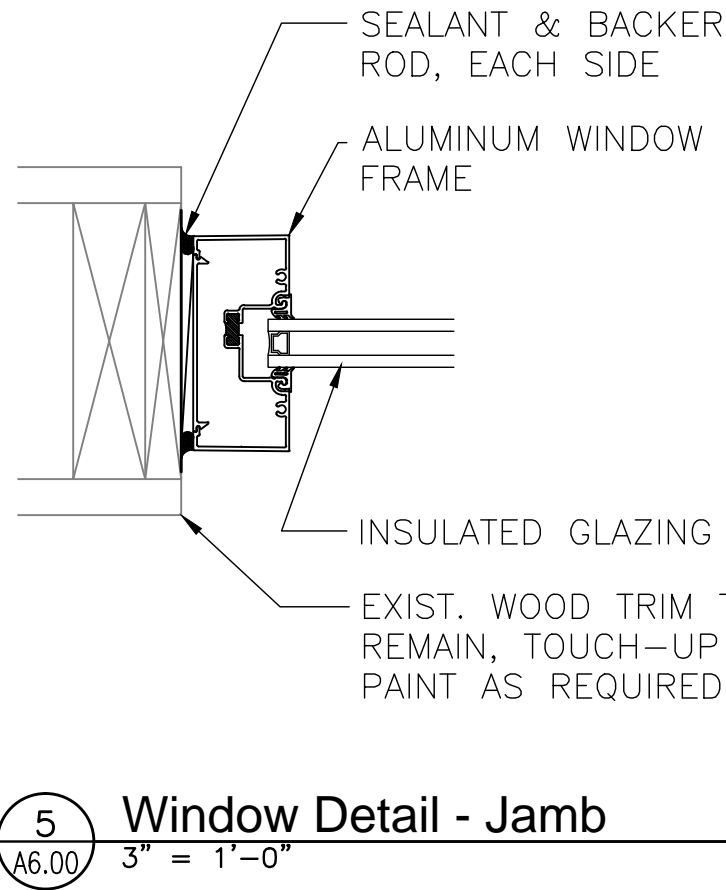
2 Window Detail - Jamb
3" = 1'-0"



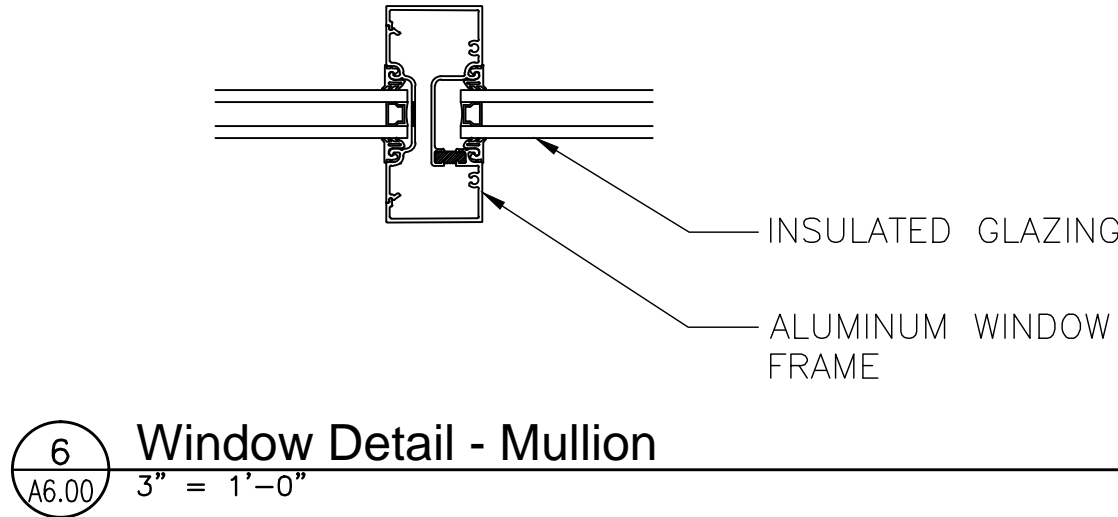
3 Window Detail - Sill
3" = 1'-0"



4 Window Detail - Head
3" = 1'-0"



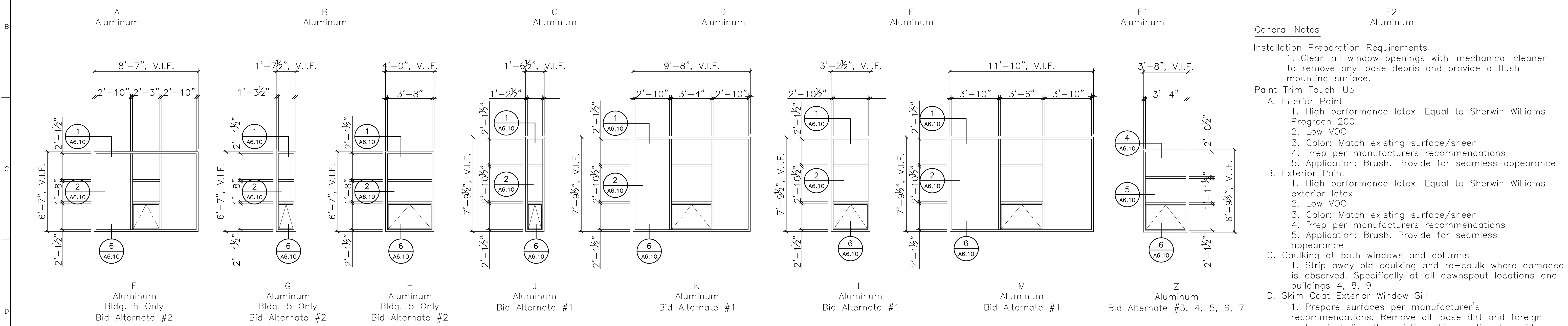
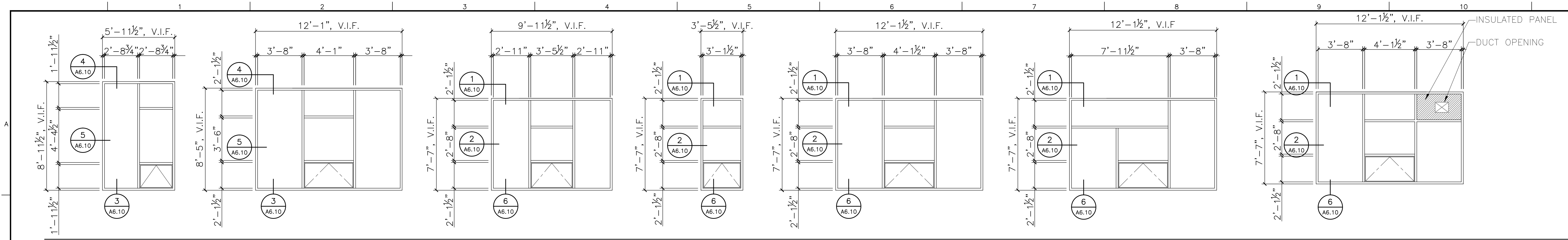
5 Window Detail - Jamb
3" = 1'-0"



6 Window Detail - Mullion
3" = 1'-0"

For Construction

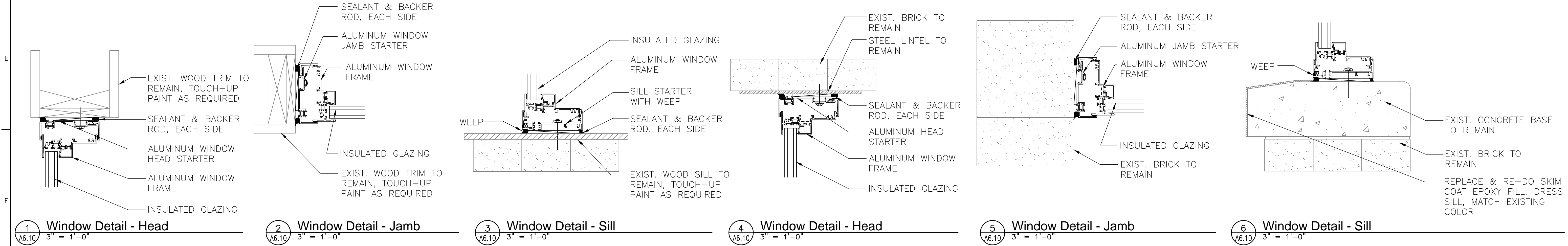
--	--	--	--	--	--	--	--	--	--	--	--	--	--	--	--	--	--	--	--	--	--	--	--	--	--	--	--	--	--	--	--	--	--	--	--	--	--	--	--	--	--	--	--	--	--	--	--	--	--	--	--	--	--	--	--	--	--	--	--	--	--	--	--	--	--	--	--	--	--	--	--	--	--	--	--	--	--	--	--	--	--	--	--	--	--	--	--	--	--	--	--	--	--	--	--	--	--	--	--	--	--	--	--	--	--	--	--	--	--	--	--	--	--	--	--	--	--	--	--	--	--	--	--	--	--	--	--	--	--	--	--	--	--	--	--	--	--	--	--	--	--	--	--	--	--	--	--	--	--	--	--	--	--	--	--	--	--	--	--	--	--	--	--	--	--	--	--	--	--	--	--	--	--	--	--	--	--	--	--	--	--	--	--	--	--	--	--	--	--	--	--	--	--	--	--	--	--	--	--	--	--	--	--	--	--	--	--	--	--	--	--	--	--	--	--	--	--	--	--	--	--	--	--	--	--	--	--	--	--	--	--	--	--	--	--	--	--	--	--	--	--	--	--	--	--	--	--	--	--	--	--	--	--	--	--	--	--	--	--	--	--	--	--	--	--	--	--	--	--	--	--	--	--	--	--	--	--	--	--	--	--	--	--	--	--	--	--	--	--	--	--	--	--	--	--	--	--	--	--	--	--	--	--	--	--	--	--	--	--	--	--	--	--	--	--	--	--	--	--	--	--	--	--	--	--	--	--	--	--	--	--	--	--	--	--	--	--	--	--	--	--	--	--	--	--	--	--	--	--	--	--	--	--	--	--	--	--	--	--	--	--	--	--	--	--	--	--	--	--	--	--	--	--	--	--	--	--	--	--	--	--	--	--	--	--	--	--	--	--	--	--	--	--	--	--	--	--	--	--	--	--	--	--	--	--	--	--	--	--	--	--	--	--	--	--	--	--	--	--	--	--	--	--	--	--	--	--	--	--	--	--	--	--	--	--	--	--	--	--	--	--	--	--	--	--	--	--	--	--	--	--	--	--	--	--	--	--	--	--	--	--	--	--	--	--	--	--	--	--	--	--	--	--	--	--	--	--	--	--	--	--	--	--	--	--	--	--	--	--	--	--	--	--	--	--	--	--	--	--	--	--	--	--	--	--	--	--	--	--	--	--	--	--	--	--	--	--	--	--	--	--	--	--	--	--	--	--	--	--	--	--	--	--	--	--	--	--	--	--	--	--	--	--	--	--	--	--	--	--	--	--	--	--	--	--	--	--	--	--	--	--	--	--	--	--	--	--	--	--	--	--	--	--	--	--	--	--	--	--	--	--	--	--	--	--	--	--	--	--	--	--	--	--	--	--	--	--	--	--	--	--	--	--	--	--	--	--	--	--	--	--	--	--	--	--	--	--	--	--	--	--	--	--	--	--	--	--	--	--	--	--	--	--	--	--	--	--	--	--	--	--	--	--	--	--	--	--	--	--	--	--	--	--	--	--	--	--	--	--	--	--	--	--	--	--	--	--	--	--	--	--	--	--	--	--	--	--	--	--	--	--	--	--	--	--	--	--	--	--	--	--	--	--	--	--	--	--	--	--	--	--	--	--	--	--	--	--	--	--	--	--	--	--	--	--	--	--	--	--	--	--	--	--	--	--	--	--	--	--	--	--	--	--	--	--	--	--	--	--	--	--	--	--	--	--	--	--	--	--	--	--	--	--	--	--	--	--	--	--	--	--	--	--	--	--	--	--	--	--	--	--	--	--	--	--	--	--	--	--	--	--	--	--	--	--	--	--	--	--	--	--	--	--	--	--	--	--	--	--	--	--	--	--	--	--	--	--	--	--	--	--	--	--	--	--	--	--	--	--	--	--	--	--	--	--	--	--	--	--	--	--	--	--	--	--	--	--	--	--	--	--	--	--	--	--	--	--	--	--	--	--	--	--	--	--	--	--	--	--	--	--	--	--	--	--	--	--	--	--	--	--	--	--	--	--	--	--	--	--	--	--	--	--	--	--	--	--	--	--	--	--	--	--	--	--	--	--	--	--	--	--	--	--	--	--	--	--	--	--	--	--	--	--	--	--	--	--	--	--	--	--	--	--	--	--	--	--	--	--	--	--	--	--	--	--	--	--	--	--	--	--	--	--	--	--	--	--	--	--	--	--	--	--	--	--	--	--	--	--	--	--	--	--	--	--	--	--	--	--	--	--	--	--	--	--	--	--	--	--	--	--	--	--	--	--	--	--	--	--	--	--	--	--	--	--	--	--	--	--	--	--	--	--	--	--	--	--	--	--	--	--	--	--	--	--	--	--	--	--	--	--	--	--	--	--	--	--	--	--	--	--	--	--	--	--	--	--	--	--	--	--	--	--	--	--	--	--	--	--	--	--	--	--	--	--	--	--	--	--	--	--	--	--	--	--	--	--	--	--	--	--	--	--	--	--	--	--	--	--	--	--	--	--	--	--	--	--	--	--	--	--	--	--	--	--	--	--	--	--	--	--	--	--	--	--	--	--	--	--	--	--	--	--	--	--	--	--	--	--	--	--	--	--	--	--	--	--	--	--	--	--	--	--	--	--	--	--	--	--	--	--	--	--	--	--	--	--	--	--	--	--	--	--	--	--	--	--	--	--	--	--	--	--	--	--	--	--	--	--	--	--	--	--	--	--	--	--	--	--	--	--	--	--	--	--	--	--	--	--	--	--	--	--	--	--	--	--	--	--	--	--	--	--	--	--	--	--	--	--	--	--	--	--	--	--	--	--	--	--	--	--	--	--	--	--	--	--	--	--	--	--	--	--	--	--	--	--	--	--	--	--	--	--	--	--	--	--	--	--	--	--	--	--	--	--	--	--	--	--	--	--	--	--	--	--	--	--	--	--	--	--	--	--	--	--	--	--	--	--	--	--	--	--	--	--	--	--	--	--	--	--	--	--	--	--	--	--	--	--	--	--	--	--	--	--	--	--	--	--	--	--	--	--	--	--	--	--	--	--	--	--	--	--	--	--	--	--	--	--	--	--	--	--	--	--	--	--	--	--	--	--	--	--	--	--	--	--	--	--	--	--	--	--	--	--	--	--	--	--	--	--	--	--	--	--	--	--	--	--	--	--	--	--	--	--	--	--	--	--	--	--	--	--	--	--	--	--	--	--	--	--	--	--	--	--	--	--	--	--	--	--	--	--	--	--	--	--	--	--	--	--	--	--	--	--	--	--	--	--	--	--	--	--	--	--	--	--	--	--	--	--	--	--	--	--	--	--	--	--	--	--	--	--	--	--	--	--	--	--	--	--	--	--	--	--	--	--	--	--	--	--	--	--	--	--	--	--	--	--	--	--	--	--	--	--	--	--	--	--	--	--	--	--	--	--	--	--	--	--	--	--	--	--	--	--	--	--	--	--	--	--	--	--	--	--	--	--	--	--	--	--	--	--	--	--	--	--	--	--	--	--	--	--	--	--	--	--	--	--	--	--	--	--	--	--	--	--	--	--	--	--	--	--	--	--	--	--	--	--	--	--	--	--	--	--	--	--	--	--	--	--	--	--	--	--	--	--	--	--	--	--	--	--	--	--	--	--	--	--	--	--	--	--	--	--	--	--	--	--	--	--	--	--	--	--	--	--	--	--	--	--	--	--	--	--	--	--	--	--	--	--	--	--	--	--	--	--	--	--	--	--	--	--	--	--	--	--	--	--	--	--	--	--	--	--	--	--	--	--	--	--	--	--	--	--	--	--	--	--	--	--	--	--	--	--	--	--	--	--	--	--	--	--	--	--	--	--	--	--	--	--	--	--	--	--	--	--	--	--	--	--	--	--	--	--	--	--	--	--	--	--	--	--	--	--	--	--	--	--	--	--	--	--	--	--	--	--	--	--	--	--	--	--	--	--	--	--	--	--	--	--	--	--	--	--	--	--	--	--	--	--	--	--	--	--	--	--	--	--	--	--	--	--	--	--	--	--	--	--	--	--	--	--	--	--	--	--






- General Notes**
- Installation Preparation Requirements**
1. Clean all window openings with mechanical cleaner to remove any loose debris and provide a flush mounting surface.
- Paint Trim Touch-Up**
- A. Interior Paint**
1. High performance latex. Equal to Sherwin Williams Progreen 200
 2. Low VOC
 3. Color: Match existing surface/sheen
 4. Prep per manufacturers recommendations
 5. Application: Brush. Provide for seamless appearance
- B. Exterior Paint**
1. High performance latex. Equal to Sherwin Williams exterior latex
 2. Low VOC
 3. Color: Match existing surface/sheen
 4. Prep per manufacturers recommendations
 5. Application: Brush. Provide for seamless appearance
- C. Caulking at both windows and columns**
1. Strip away old caulking and re-caulk where damaged is observed. Specifically at all downspout locations and buildings 4, 8, 9.
- D. Skim Coat Exterior Window Sill**
1. Prepare surfaces per manufacturer's recommendations. Remove all loose dirt and foreign matter including the existing skim coating by acid etching or other suitable method.
 2. Provide an epoxy skim coating to the entire concrete sill. Apply with toiler brush.
 3. Provide two coats. Minimum thickness per coat shall be 7-10 Mils.
 4. Color: Custom color to match architects sample.

NOTE: ALL GLAZING IS TIG: TEMPERED INSULATING GLASS UNIT

Window Elevations
1/4" = 1'-0"



For Construction

			CONSULTANTS:				<div>ARCHITECT/ENGINEERS:</div> <div>517 Seventh Street Rapid City, SD 57701 (605) 342-9470 (605) 348-0571 (fax)</div>	Drawing Title Window Elevations and Details		Project Title Tramway Fenestration Upgrade		Project Number 666-14-109		Office of Facilities Management
								Approved:		Location Sheridan VAMC, Wyoming		Building Number		
								Date 09-04-2013		Checked KS	Drawn BW	Drawing Number A6.10		
Revisions:												Dwg. 5 of 5		

VA FORM 08-6231, OCT 1978

1

2

3

4

5

6

7

8

9

10

Sheridan VAMC

Tramway Fenestration Upgrades

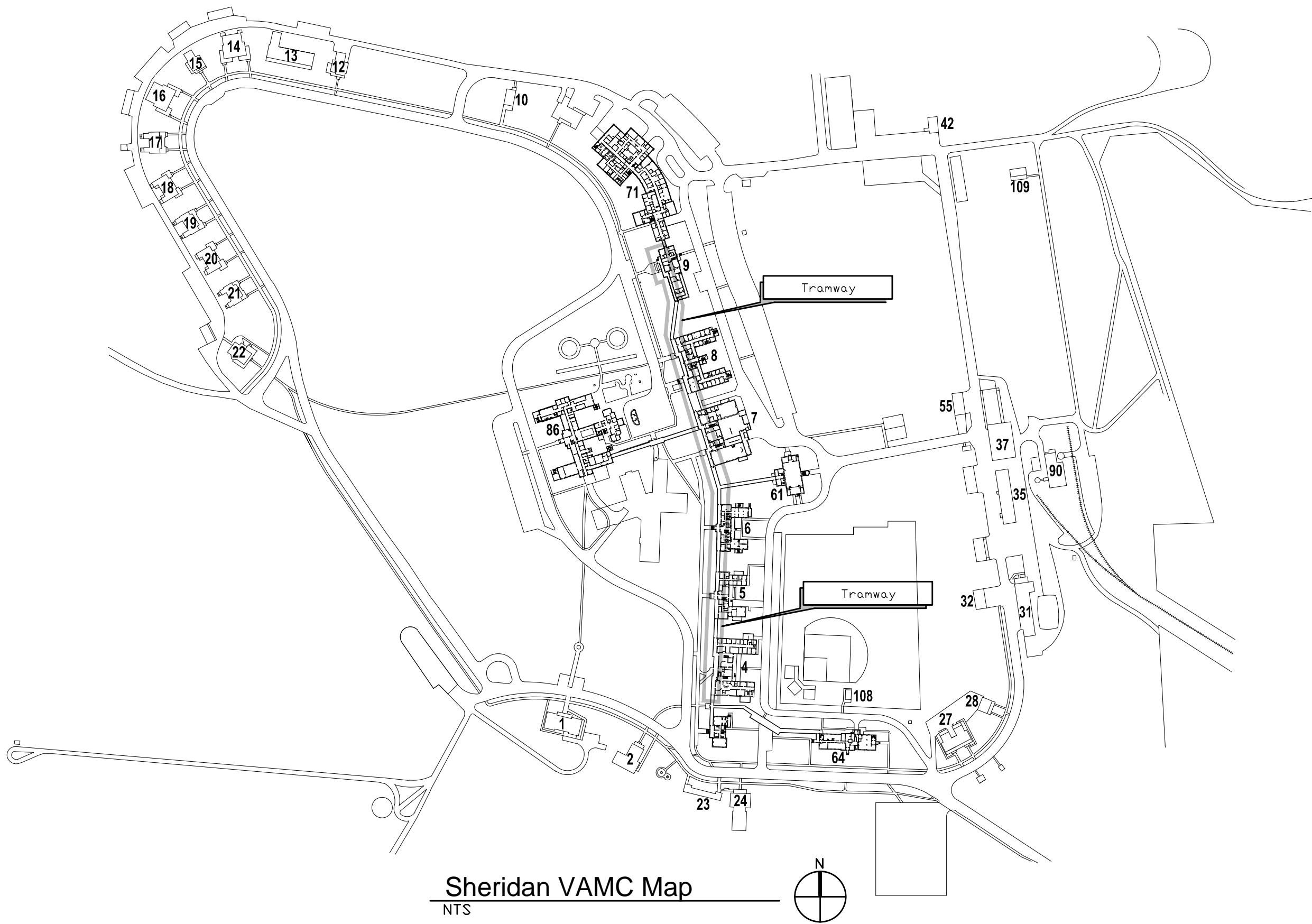
#666-14-109

Sheridan, Wyoming



Architectural
FourFront Design
517 7th Street
Rapid City, South Dakota 57701

- Sheet Index:**
- General
G0.00 Cover Sheet and Sheet Index
- Architectural
A1.00 Reference Plans
A1.01 Reference Plans
A6.00 Door Schedule, Elevations and Details
A6.10 Window Elevations and Details



For Construction

<div>Revisions:</div> <table><thead><tr><th></th><th>Initials</th><th>Date</th></tr></thead><tbody><tr><td> </td><td> </td><td> </td></tr><tr><td> </td><td> </td><td> </td></tr><tr><td> </td><td> </td><td> </td></tr><tr><td> </td><td> </td><td> </td></tr></tbody></table>		Initials	Date													CONSULTANTS:	ARCHITECT/ENGINEERS: <div><div></div><div>517 Seventh Street Rapid City, SD 57701 (605) 342-9470 (605) 348-0571 (fax)</div></div>	Drawing Title Cover Sheet and Sheet Index Approved:	Project Title Tramway Fenestration Upgrade Location Sheridan VAMC, Wyoming Date 09-04-2013	Project Number 666-14-109 Building Number Drawing Number G0.00 Dwg. 1 of 5	Office of Facilities Management
		Initials	Date																		
				Checked KS	Drawn BW																