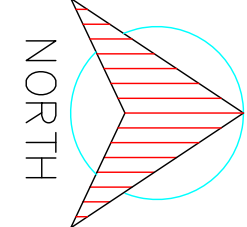
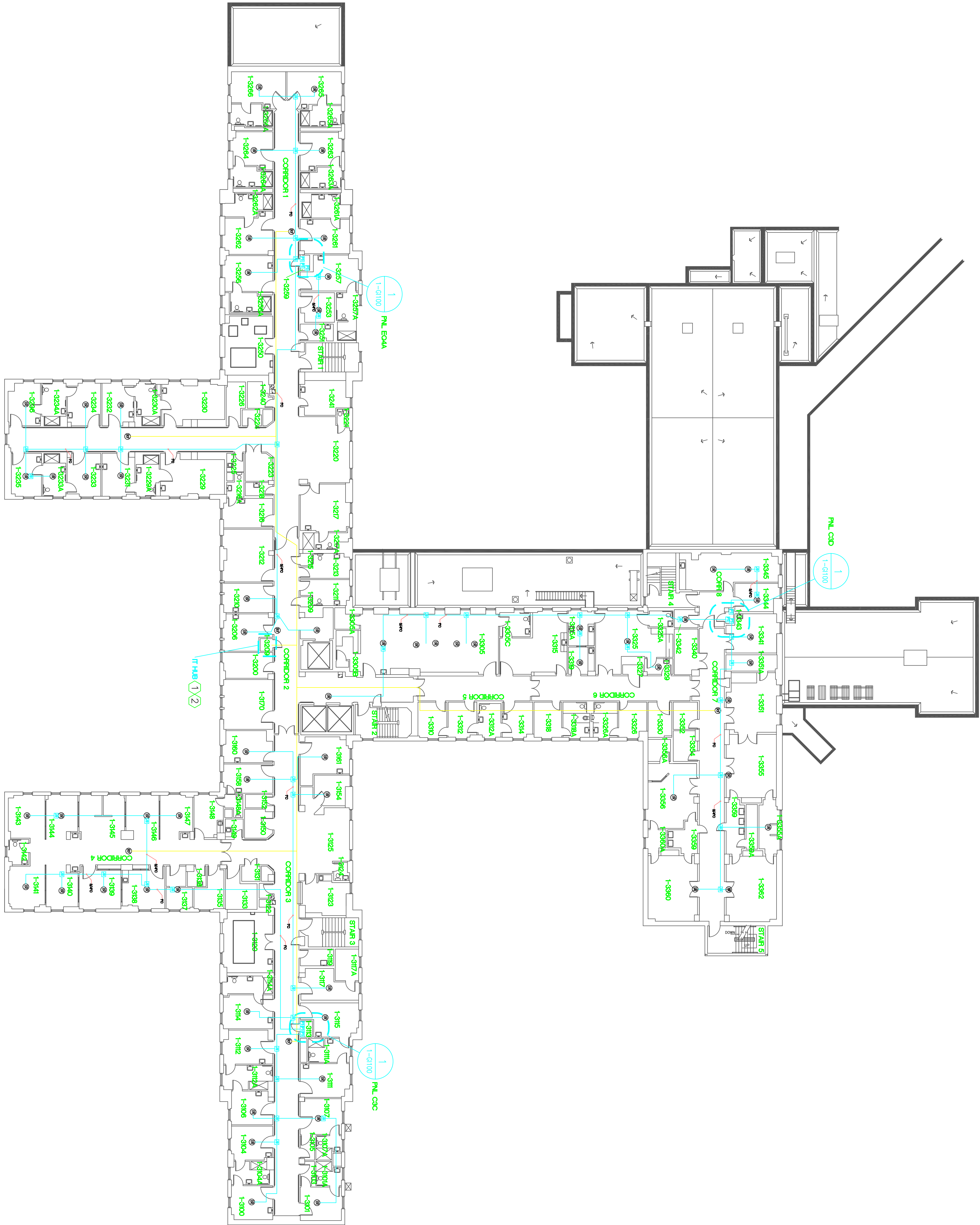


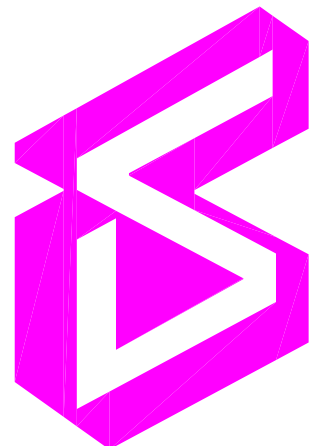
KEYED NOTES:

- ① DATA DEPOSITS TO MAKE 30" DIA. IN CORRIDOR 2 FOR FUTURE RELOCATION OF IT INFRASTRUCTURE.
- ② INSTALL A NEW 100A CENTRAL POWER SUPPLY, RECEPT AND USER POWER FOR CAMERAS.



CONSULTANTS:

USK Engineers-Architects-Co
William R. Kibbe & Associates
1475 S. Upperson Avenue, Southfield, MI
(989) 752-5000



Department of Veterans Affairs
Alveda E. Lutz Medical Center
1500 Weiss Street
Saginaw, MI 48602

Property of the United States Government

For Official Use Only
Do not remove this notice
Property Delivery documents when no longer needed

Drawing Title
BUILDING 1 FLOOR 3 RFLS LAYOUT

Project Title
RFLS SITE PREP

Scale
1/16" = 1'-0"

File Name
Approved Director Facilities Management Services

Project No.
655-13-106

Drawing Number
BUILDING 1

File Location

Date
3-3-13

Checked

Drawn

Dwg. 34 of 95

Office of
Facilities
Management
Department of
Veterans Affairs