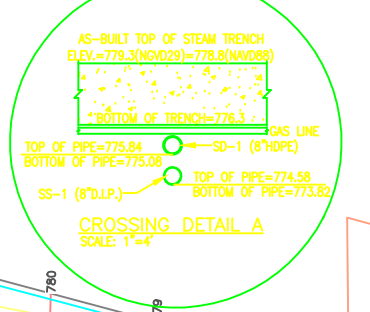
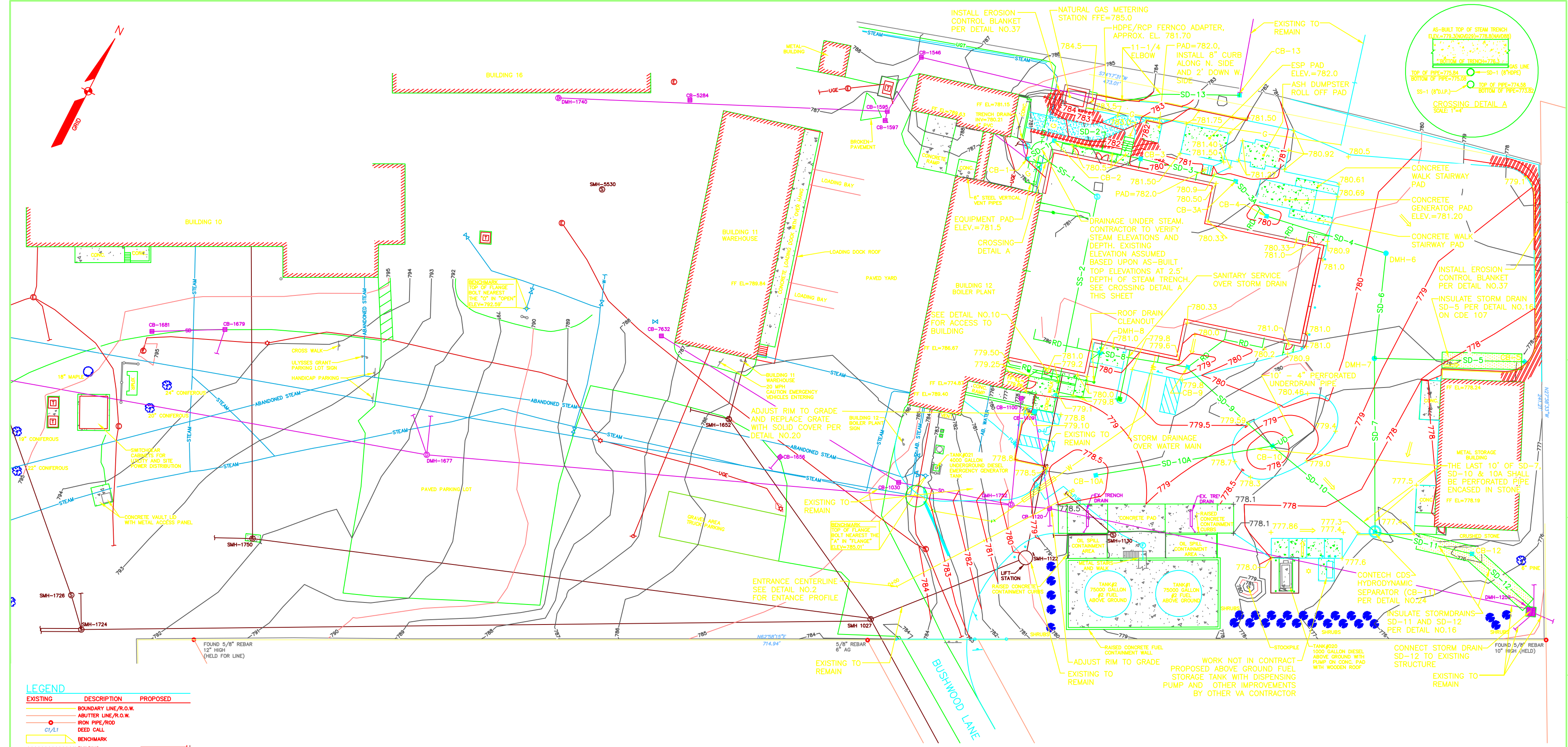


three inches = one foot
one and one half inches = one foot
one inch = one foot
three quarters inch = one foot
one half inch = one foot
three eighths inch = one foot
one quarter inch = one foot
one eighth inch = one foot



EXISTING	DESCRIPTION	PROPOSED
---	BOUNDARY LINE/R.O.W.	---
---	ABUTTER LINE/R.O.W.	---
---	IRON PIPE/ROAD DEED CALL	---
---	BENCHMARK	---
---	BUILDING	---
---	EDGE PAVEMENT	---
---	EDGE CONCRETE	---
---	PAVEMENT PAINT	---
---	GRAVEL ROAD	---
---	CONTOURS	---
---	CHAIN LINK FENCE	---
---	RETAINING WALL	---
---	DECIDUOUS TREE	---
---	CONIFEROUS TREE	---
---	GAS	---
---	GAS GATE VALVE	---
---	WATER	---
---	WATER GATE VALVE	---
---	HYDRANT	---
---	SEWER	---
---	SEWER MH	---
---	STORM DRAIN	---
---	CATCH BASIN	---
---	DRAINAGE MH	---
---	ROOF DRAIN	---
---	DRAINAGE FLOW	---
---	OVERHEAD UTILITY	---
---	UNDERGROUND UTILITY	---
---	UNDERGROUND TELEPHONE	---
---	TRANSFORMER PAD	---
---	ELECTRICAL MANHOLE	---
---	LIGHT POLE/MAIL	---
---	UTILITY POLE	---
---	PIPE INSULATION	---

STRUCTURE DATA				
ID	RM	INV. IN	INV. OUT	TYPE
CB-1	781.0	780.18 (E)	775.17	NYLOPLAST
CB-2	780.1	775.10	775.10	NYLOPLAST
CB-3	779.7	774.89	774.89	NYLOPLAST
CB-3A	780.3	774.69	774.69	NYLOPLAST
CB-4	779.8	774.56	774.56	NYLOPLAST
CB-5	777.5	774.36	774.36	CONCRETE
DMH-6	779.9	774.27	774.27	CONCRETE
DMH-7	779.3	774.02 (E)	774.02	CONCRETE
DMH-8	780.64	774.41	774.41	CONCRETE
CB-8	778.3	774.20	774.20	NYLOPLAST
CB-10	777.5	773.52 (E)	773.52	CONCRETE
CB-10A	778.39	774.35	774.35	CONCRETE
CB-12	777.2	773.60 (E)	773.60	CONCRETE
CB-12	775.47	773.37	773.37	CONCRETE
CB-13	783.1	781.00 (W)	781.00	NYLOPLAST

STORM DRAIN PIPE DATA				
PIPE	LENGTH	SIZE	SLOPE	
SD-1	15'	8"	0.005	
SD-2	45'	12"	0.005	
SD-3	48'	12"	0.005	
SD-3A	20'	12"	0.005	
SD-4	40'	12"	0.005	
SD-5	73'	12"	0.005	
SD-6	60'	12"	0.005	
SD-7	84'	12"	0.005	
SD-8	43'	12"	0.005	
SD-9	56'	12"	0.005	
SD-10	84'	15"	0.005	
SD-10A	80'	12"	0.005	
SD-11	46'	15"	0.005	
SD-12	27'	15"	0.005	
SD-13	66'	12"	0.010	

NOTES:
1. INSTALL SHUT OFF OUTLET PIPE OF STRUCTURES
DMH-7 AND CB-10 SEE DETAIL SHEET
1. 2" I.D. NYLOPLAST STRUCTURE TO BE MODEL#2824AG
SEE DETAIL SHEET
2. ALL STORM DRAINS TO BE HIGH-DENSITY POLYETHYLENE (HDPE)
3. LAST 10' OF SD-7, SD-10 & SD-10A SHALL BE PERFORATED
PIPE ENCASED IN STONE

ENGINEERS STATEMENT

Per Title 8, Article 145, Section 7209 of the New York State Education Law, it is a violation of said law to alter this plan in any way unless under the direction of a licensed professional engineer or land surveyor. If altered, the altering engineer or surveyor shall affix to this plan their seal with the notation of "altered by" with their signature, date of alteration and a specific description of the alteration.

ROBERT A. MCSHANE
L.C. # 086309

ARCHITECT/ENGINEERS:

MOHLIN & COMPANY
146 Main Street, Suite 300
Siloam, Maine 04472
(207) 283-8151

SEBAGO
TECHNICS
WWW.SEBAGOTECHNICS.COM
75 John Roberts Rd., Suite 1A
South Portland, ME 04106
Tel: 207-262-2100

Drawing Title GRADING AND DRAINAGE PLAN

Approved Project Director:
RON EISENBERG, PROJECT EXECUTIVE
THE WHITING-TURNER CONTRACTING COMPANY
300 E. JOPPA ROAD, SUITE 800
BALTIMORE, MARYLAND 21286

Project Title
VAMC - BIOMASS
COGENERATION ENERGY CENTER
CANANDAIGUA, NEW YORK

Project Number
WT 12855
Building Number
12

Location
VAMC - CANANDAIGUA, NY
Date
05-24-19
Checked
RAM
Drawn
BFF/JFH

Drawing Number
CG 103
Page 6 of 9

Project: VAMC-Canandaigua-0505-19.dwg

VA FORM CG-6231

CG103 Whiting-Turner.dwg, TAB:Layout12