

Location of W-T installed gas piping to new Gas Meter Building

EXISTING	DESCRIPTION	PROPOSED
---	BOUNDARY LINE/R.O.W.	---
---	ADJUTER LINE/R.O.W.	---
---	IRON PIPE/ROD	---
---	DEED CALL	---
---	BENCHMARK	---
---	BUILDING	---
---	EDGE PAVEMENT	---
---	EDGE CONCRETE	---
---	PAVEMENT PAINT	---
---	GRAVEL ROAD	---
---	CONTOURS	---
---	CHAIN LINK FENCE	---
---	RETAINING WALL	---
---	DECIDUOUS TREE	---
---	CONIFEROUS TREE	---
---	GAS	---
---	GAS GATE VALVE	---
---	WATER	---
---	WATER GATE VALVE	---
---	HYDRANT	---
---	SEWER	---
---	SEWER MH	---
---	STORM DRAIN	---
---	CATCH BASIN	---
---	DRAINAGE MH	---
---	ROOF DRAIN	---
---	DRAINAGE FLOW	---
---	OVERHEAD	---
---	UTILITY	---
---	UNDERGROUND	---
---	ELECTRIC	---
---	UNDERGROUND	---
---	TELEPHONE	---
---	TRANSFORMER PAD	---
---	ELECTRICAL MANHOLE	---
---	LIGHT POLE/WALL	---
---	UTILITY POLE	---

STRUCTURE DATA

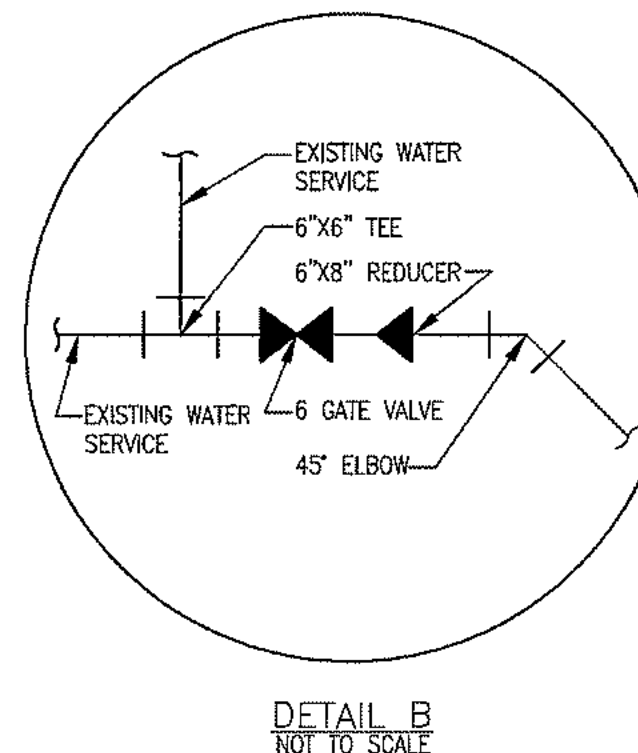
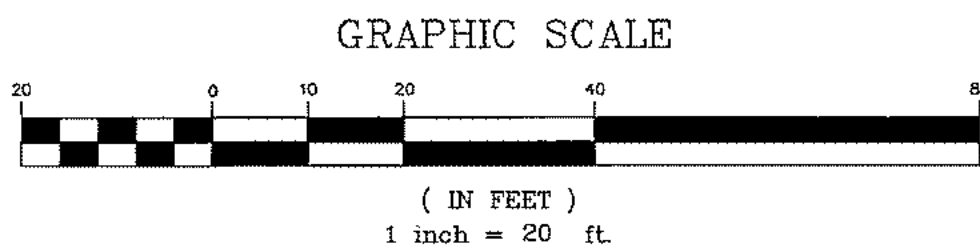
ID	IRIM	INV. IN	INV. OUT	TYPE	SIZE
SMH-11	781.0	778.15(C)	773.95	CONCRETE	4'
SMH-21	785	773.65	773.45	CONCRETE	4'
SMH-31	779.0	772.65 (2)	771.68(C)	CONCRETE	4'

SANITARY SEWER PIPE DATA

PIPE	LENGTH	SIZE	SLOPE
SS-1	42	8"	0.009
SS-2	99	8"	0.008

NOTES:

- ALL SANITARY SEWER LINES TO BE POLYWRAPPED DUCTILE IRON, CLASS 52 PIPE



ENGINEERS STATEMENT

Per Title 8, Article 145, Section 7209 of the New York State Education Law, it is a violation of said law to alter this plan in any way unless under the direction of a licensed professional engineer or land surveyor. If altered, the altering engineer or surveyor shall affix to this plan their seal with the notation of "altered" with their signature, date of alteration and a specific description of the alteration.

DESIGN/BUILD CONTRACTOR:

THE WHITING-TURNER CONTRACTING COMPANY
300 E. JOPPA ROAD, SUITE 800
BALTIMORE, MARYLAND 21286

VA CONTRACT NUMBER : VA701-RA-0063
VA PROJECT NUMBER : 101-09-067

ARCHITECT/ENGINEERS:

MOHLIN & COMPANY
CONSULTING ENGINEERS
146 Main Street, Suite 300
Saco, Maine 04072
(207) 283-9151

SEBAGO
TECHNICS
www.sebagotech.com
75 John Roberts Rd. - Suite 1A
South Portland, ME 04106
Tel: 207-260-2100 Tel: 207-783-5555

Drawing Title

UTILITY PLAN

Approved Project Director:

RON EISENBERG, PROJECT EXECUTIVE
THE WHITING-TURNER CONTRACTING COMPANY
300 E. JOPPA ROAD, SUITE 800
BALTIMORE, MARYLAND 21286

Project Title

VAMC - BIOMASS
COGENERATION ENERGY CENTER
CANANDAIGUA, NEW YORK

Location

VAMC - CANANDAIGUA, NY

Date

05-18-11

Checked

RAM

Drawn

JFH

Project Number

WT 12855

Building Number

12

Drawing Number

CU 104

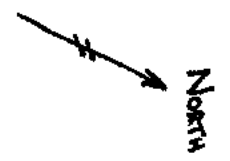
Dwg. 7 of 19



BOILER
BLDG.
#12
X

BRIDGE/TUNNEL

INCINERATOR BLDG.
FIRE TRUCK GARAGE



2" GAS TO LAUNDRY BLDG. #10

3-1" STEEL
CUT +
CAPPED
PREVIOUSLY
JUST NINE
BLDG. #12
EXT. WALL

6" PVC
STORM

1" O.D.
STEEL
CONDUIT

4" PVC
STORM

3-2" O.D.
STEEL
CONDUITS

3/4" PVC CONDUIT LOWER HALF
CONCRETE ENCASED

24" O.D. STEAM

NEW 6" PVC GAS TO BOILER BLDG. #12
NEW 3/4" PVC CONDUIT FOR METER TELL LINE

NEW
3 WAY

NEW
2" PVC
GAS LINE

CVT
+
CAPE

TO OLD GAS
METER BLDG.

NEW
GAS METER
BLDG.

DEAD +
ABANDONED
W. PLACE

ASPHALT DRIVEWAY

3

NEW SERVICE
P.V.C.
GAS LINE

SEE ALSO PHOTOS
TAKEN BEFORE/DURING/AFTER
EXCAVATION (INDICATED
WITH DASHED LINES)

04/28, 29, 30 2011

PHOTOS ON W-T FILE

- RUDY ROSKA (W-T SUPER)
04/30/11

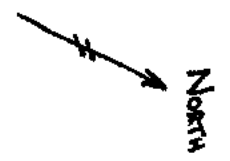
PAGE #1 OF 3

NTS

BOILER
BLDG.
#12
X

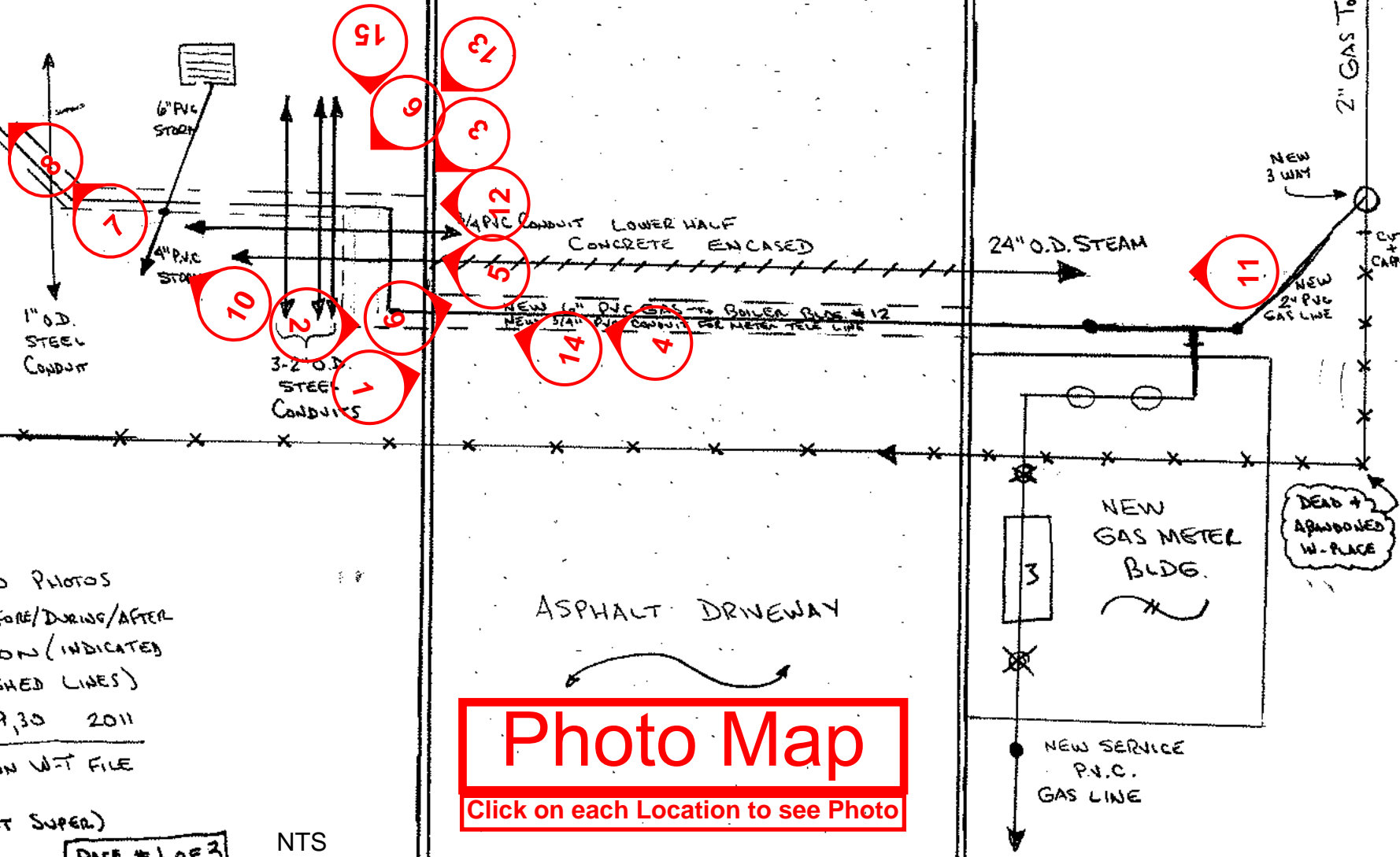
BRIDGE/TUNNEL

INCINERATOR BLDG.
FIRE TRUCK GARAGE



2" GAS TO LAUNDRY BLDG. #10

3-1" STEEL
CUT +
CAPPED
PREVIOUSLY
JUST NINE
BLDG. #12
EXT. WALL



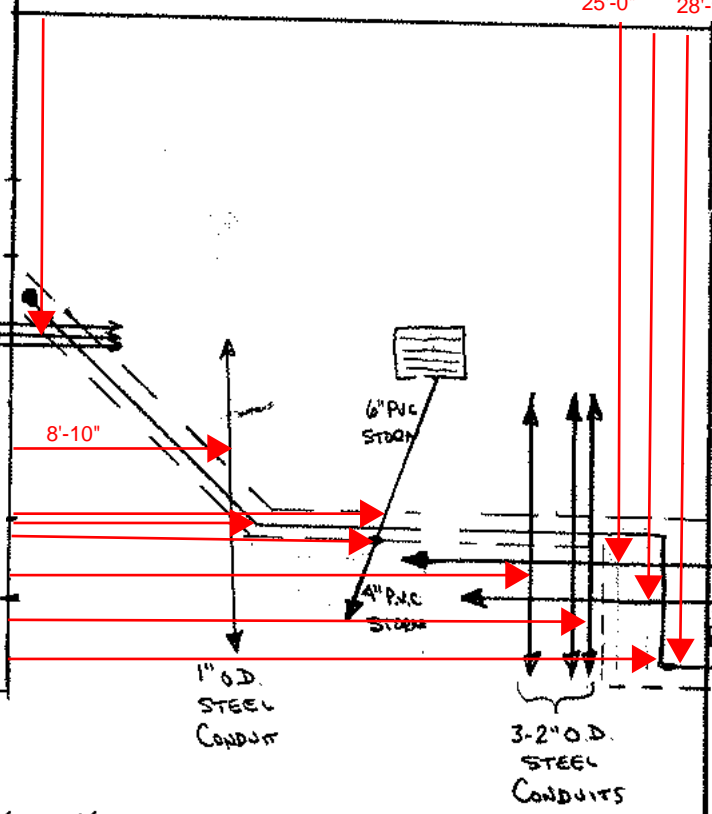
SEE ALSO PHOTOS
TAKEN BEFORE/DURING/AFTER
EXCAVATION (INDICATED
WITH DASHED LINES)
04/28, 29, 30 2011
PHOTOS ON W-T FILE

Photo Map
Click on each Location to see Photo

Bldg.
#12
K

13'-5" 26'-6" 25'-0" 28'-9"

3-1" STEEL CUT + CAPPED PREVIOUSLY JUST WIND BLDG. #12 EXT. WALL
15'-4"
11'-10"
15'-0"
18'-10"
19'-10"
22'-6"



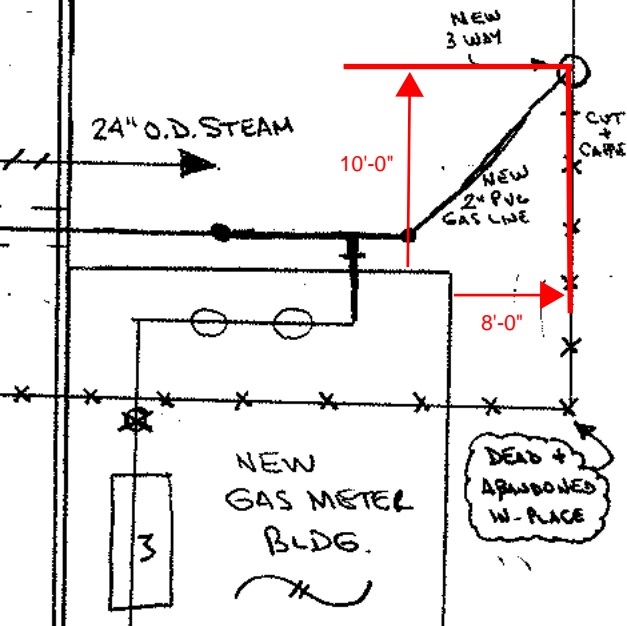
TO OLD GAS METER BLDG.

- Rudy Rojka (W-T Super.)
04/30/11

Page #2b of 3

NTS

2" GAS TO LAUNDRY BLDG. #10



2



Photo #1

[Click to Return to Plan](#)

24" O.D. Steam

**New 6" PVC Gas from
Gas Meter Building to
Boiler Bldg. #12**

04/29/2011

Photo #2

[Click to Return to Plan](#)



New 6" PVC Gas from
Gas Meter Building to
Boiler Bldg. #12

04/29/2011

Photo #3

[Click to Return to Plan](#)

**3-2" O.D. Steel
Conduits**

24" O.D. Steam

3/4" PVC Conduit

04/29/2011

Photo #4

[Click to Return to Plan](#)



04/29/2011

Photo #5

[Click to Return to Plan](#)



04/29/2011

Photo #6

[Click to Return to Plan](#)

3-2" O.D. Steel Conduits

24" O.D. Steam

6" PVC Storm

3/4" PVC Conduit

04/29/2011



Photo #7

[Click to Return to Plan](#)



Trench for New Gas Line

1" O.D. Steel Conduit

04/29/2011

Photo #8

[Click to Return to Plan](#)



04/29/2011

Photo #9

[Click to Return to Plan](#)



**24\" O.D. Steam
(Concrete Encased)**

04/29/2011

Photo #10

[Click to Return to Plan](#)



04/30/2011

New Gas
Meter
Building

Photo #11

[Click to Return to
Plan](#)

04/29/2011



Photo #12

[Click to Return to Plan](#)

Existing 3/4" PVC Conduit

**New 3/4" PVC Conduit
for Meter Tele Line**

**New 6" PVC Gas from
Gas Meter Building to
Boiler Bldg. #12**

04/30/2011

Photo #13

[Click to Return to Plan](#)



04/30/2011

Photo #14

[Click to Return to Plan](#)



04/29/2011

Photo #15

[Click to Return to Plan](#)



04/29/2011