

three inches = one foot  
one and one-half inches = one foot  
one inch = one foot  
three-quarters inch = one foot  
one-half inch = one foot  
three-eighths inch = one foot  
one-quarter inch = one foot  
one-eighth inch = one foot

FULLY SPRINKLERED

GENERAL NOTES

- A MAINTAIN ALL LIGHTING AND RECEPTACLE CIRCUITS FOR NEW WORK (WHERE INDICATED AND/OR REQUIRED).
- B REMOVE ALL ACCESSIBLE ABANDONED WIRING OF ALL TYPES, OR CAP AND LABEL IN JUNCTION BOX FOR RE-USE. ASSOCIATED WORK SHALL BE DONE IN COMPLIANCE WITH THE NATIONAL ELECTRIC CODE.
- C MAINTAIN AND RESTORE, IF INTERRUPTED, ALL CONDUITS AND CONDUCTORS PASSING THRU RENOVATED AREA SERVING UNDISTURBED AREAS.
- D MAINTAIN EXISTING PAGING CIRCUIT FOR NEW WORK.

NOTES

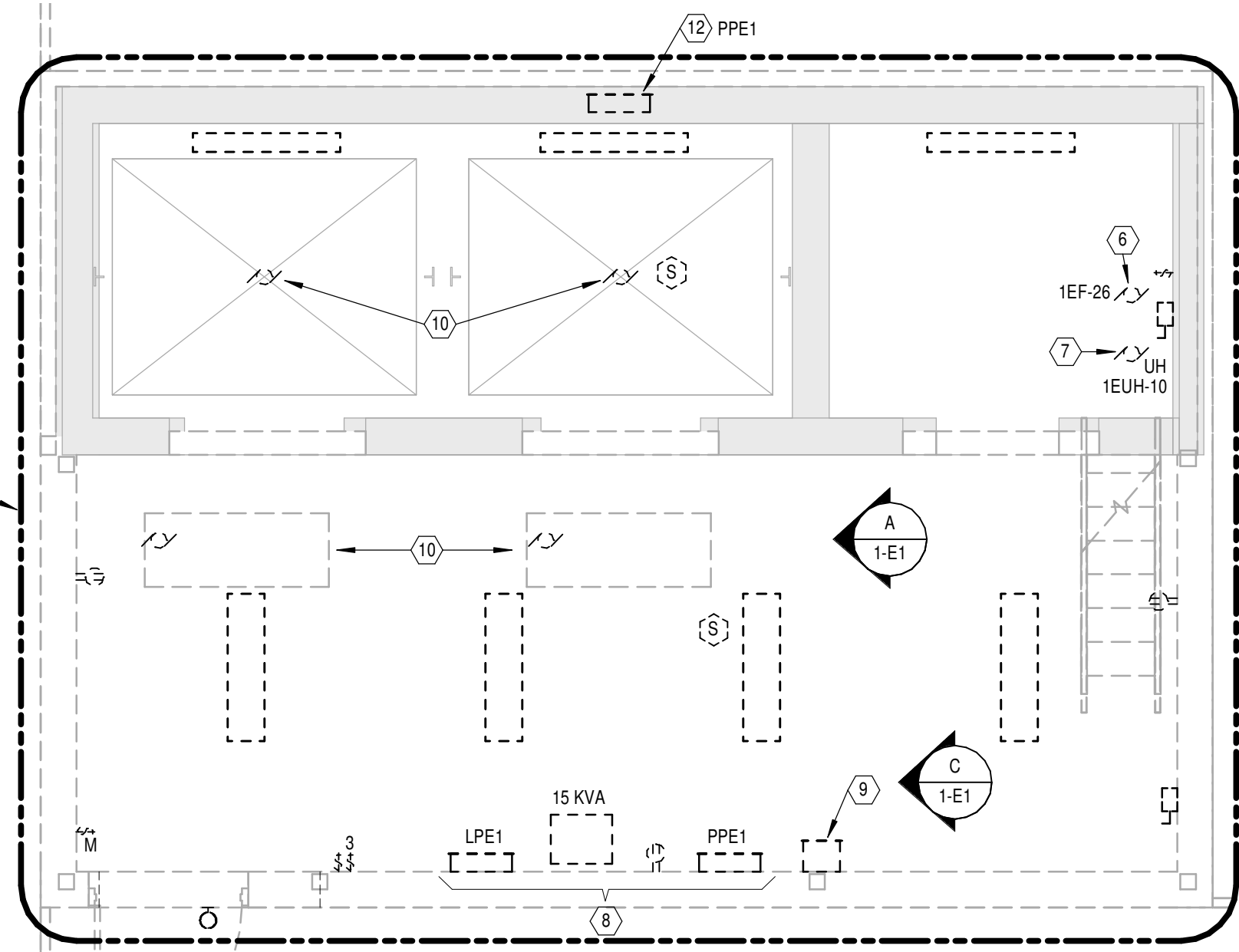
- 1 REMOVE ALL THROUGH-ROOF PENETRATIONS. MAINTAIN/EXTEND EXISTING DOWN CONDUCTOR FOR NEW WORK. REFER TO NEW WORK PLAN FOR ADDITIONAL INFORMATION. TYPICAL FOR ALL DOWN CONDUCTORS.
- 2 UNDER BASE BID, REMOVE ALL EQUIPMENT SHOWN. EQUIPMENT SHALL REMAIN EXISTING UNDER DEDUCT ALTERNATE No. 2. REFER TO NEW WORK PLANS FOR ADDITIONAL INFORMATION.
- 3 REMOVE EXISTING OBSTRUCTION LIGHT. DISCONNECT AND REMOVE CIRCUITRY BACK TO SOURCE.
- 4 EXISTING GLYCOL TRANSFER PUMP TO BE REMOVED BY DIV 23. DISCONNECT AND REMOVE ASSOCIATED CIRCUITRY BACK TO SOURCE.
- 5 EXISTING HEAT RECOVERY PUMP TO BE REMOVED BY DIVISION 23. DISCONNECT AND REMOVE CIRCUITRY BACK TO SOURCE.
- 6 EXISTING EXHAUST FAN TO BE REMOVED BY DIV 23. DISCONNECT AND REMOVE CIRCUITRY BACK TO SOURCE.
- 7 EXISTING UNIT HEATER TO BE REMOVED BY DIV 23. DISCONNECT AND REMOVE CIRCUITRY BACK TO SOURCE.
- 8 REMOVE 480V & 208V ELECTRICAL DISTRIBUTION EQUIPMENT. REMOVE 480V FEEDER TO ABOVE 4TH FLOOR CEILING. MAINTAIN FOR NEW WORK.
- 9 REMOVE ABANDONED ELEVATOR COMMUNICATION SYSTEM AND ALL WIRING/RACEWAY.
- 10 EXISTING ELEVATORS AND CONTROLLERS TO BE REMOVED BY DIV 1. DISCONNECT AND REMOVE CIRCUITRY BACK TO SOURCE.
- 11 EXISTING ROOF TOP AH UNIT TO BE REMOVED BY DIV 23. DISCONNECT AND REMOVE CIRCUITRY BACK TO SOURCE (AS INDICATED).
- 12 HOISTWAY SMOKE DAMPER CONTROLLER TO BE REMOVED BY DIV 1. DISCONNECT AND REMOVE CIRCUITRY BACK TO SOURCE (AS INDICATED).
- 13 REFER TO ARCHITECTURAL PHASING PLAN FOR INFORMATION ON MAINTAINING ELEVATOR FUNCTIONALITY DURING CONSTRUCTION AND PROVIDE ALL LABOR/MATERIALS NECESSARY TO ACCOMMODATE.
- 14 REMOVE ALL EXISTING LIGHTNING PROTECTION CONDUCTORS (TYP.).
- 15 REMOVE ALL EXISTING LIGHTNING PROTECTION TERMINALS (TYP.).
- 16 REMOVE EXISTING DOVER ELEVATOR CONTROL/COMMUNICATION BOX.
- 17 UNDER BASE BID, PROVIDE REMOVAL OF LIGHTNING PROTECTION SYSTEM AS INDICATED. UNDER DEDUCT ALTERNATE 4, NO EXTENSION OF STAIRWELL, THEREFORE MAINTAIN EXISTING L.P.S. ABOVE EXISTING STAIRWELL. REWORK / EXTEND UNDER NEW WORK PHASE.
- 18 UNDER BASE BID, PROVIDE WORK AS INDICATED. UNDER DEDUCT ALTERNATE #5, DELETE ALL WORK ASSOCIATED TO "SOUTH WEST CORNER" INCLUDING (BUT NOT LIMITED TO) CONDUIT, CIRCUITRY, RECEPTACLES, LIGHTING, FIRE ALARM, ETC.. REFER TO SHEET 1-E11 FOR ALTERNATE LAYOUT.



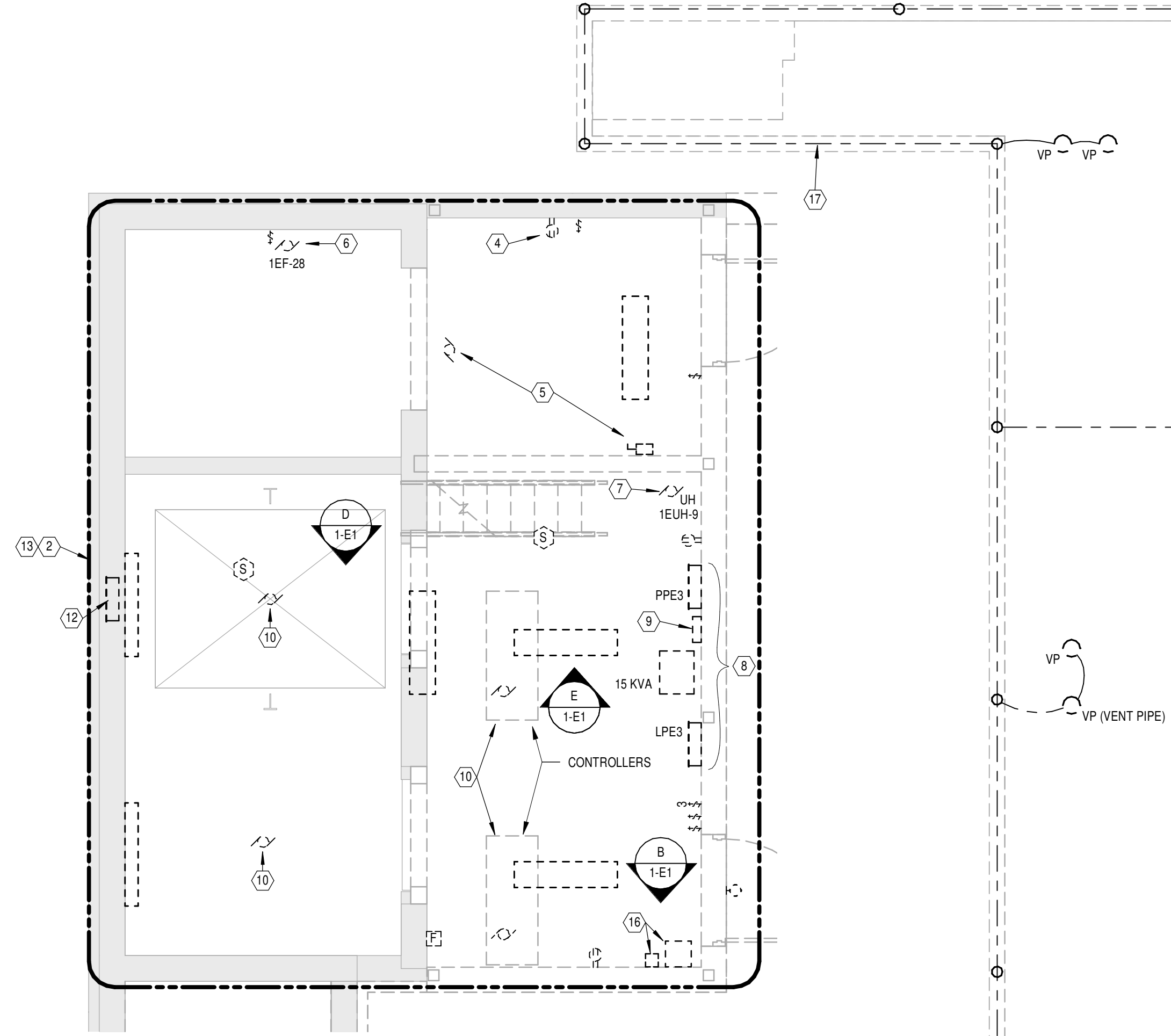
SITE PHOTOGRAPH E  
SCALE: NTS



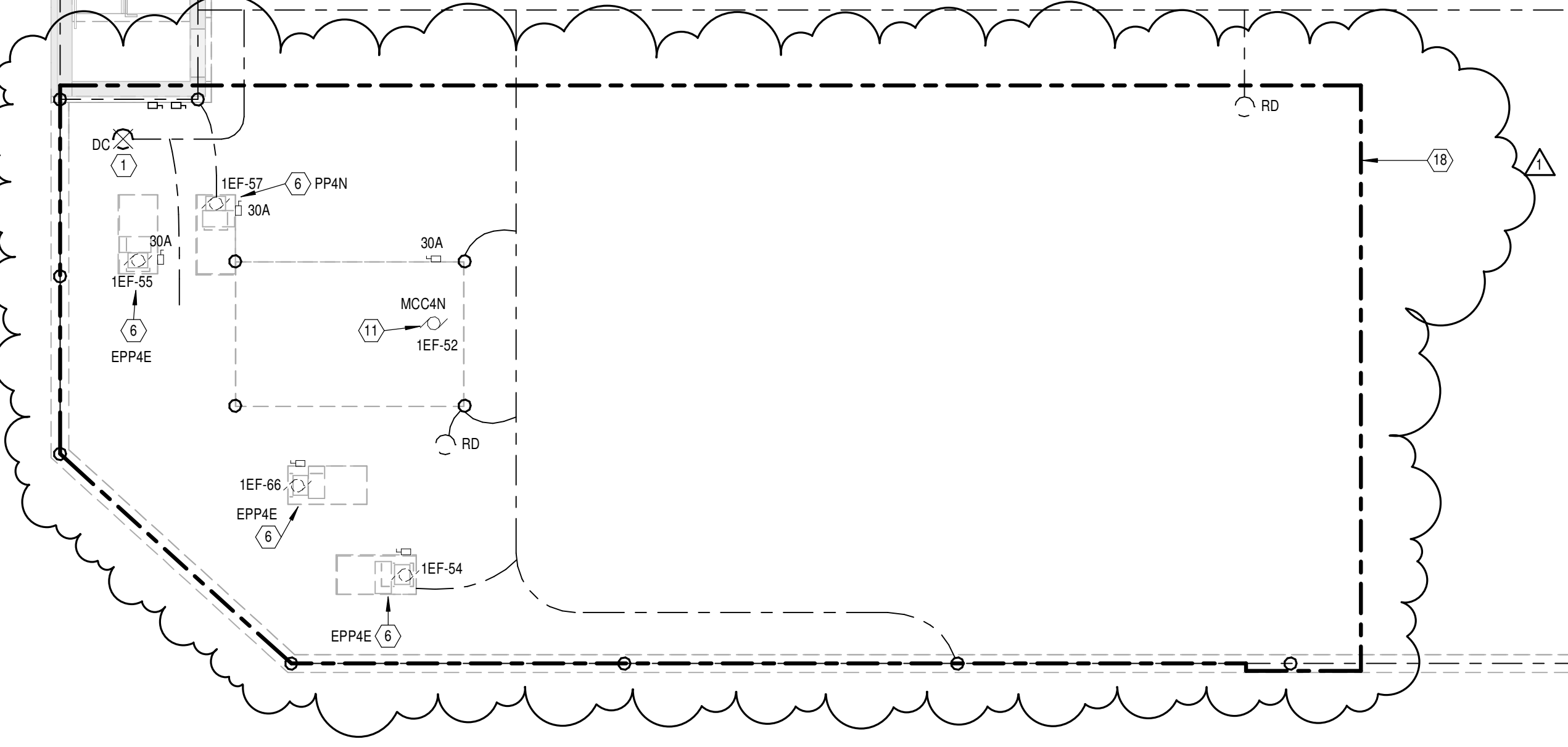
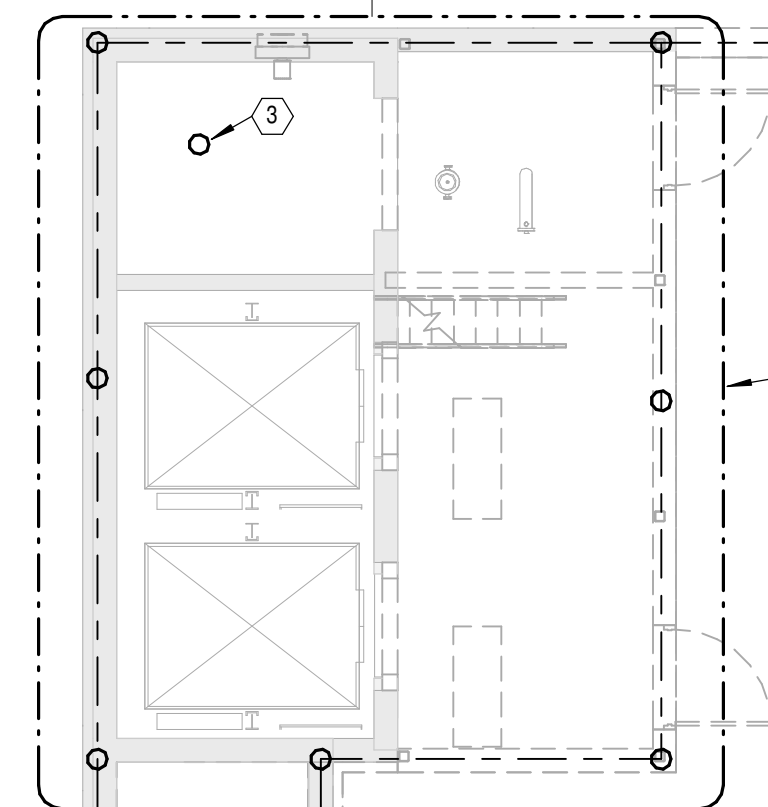
SITE PHOTOGRAPH D  
SCALE: NTS



ELEVATOR PENTHOUSE EAST - REMOVALS  
Scale: 1/4" = 1'-0"



ELEVATOR PENTHOUSE WEST - REMOVALS  
Scale: 1/4" = 1'-0"



PENTHOUSE FLOOR PLAN - REMOVALS  
Scale: 1/8" = 1'-0"



SITE PHOTOGRAPH C  
SCALE: NTS



SITE PHOTOGRAPH B  
SCALE: NTS



SITE PHOTOGRAPH A  
SCALE: NTS

2/10/2015 2:15:13 PM

1	Deduct Alt 5	02/10/2015
	Deduct Alt 6	02/10/2015
	Bid Set	10/3/2014
Revisions		Date

CONSULTANTS:

**Heapy Engineering**  
Mechanical Electrical Commissioning Technology  
Nationally Recognized Leader in Sustainability / LEED  
1400 W Dorothy Lane, Dayton OH 45409-1310  
Ph: 937-224-0861 Fax: 937-224-5777 www.heapy.com  
HEAPY PROJECT No.: 2011-04007 FIRM LICENSE No.: 01528

STATE OF KENTUCKY  
MARK T. BRUMFIELD  
23770  
LICENSED PROFESSIONAL ENGINEER

ARCHITECT/ENGINEERS:

RDC/JOHN POE ARCHITECTS

524 FERNWOOD DRIVE  
ALTA MONTE SPRINGS,  
FLORIDA 32701  
800.362.1523 PHONE  
rrepston@rdjohnpoe.com

Drawing Title

ROOF/PENTHOUSE PLAN - REMOVALS

Approved: Project Director

Project Title

5th FLOOR MAIN ADDITION

Location

LEXINGTON VAMC

Date

10/3/2014

Checked

MSG

Drawn

JAS

Project No.

VA Project No. 596-329  
RDC/JPA Project No. 11003.00

Building Number

1A

Drawing Number

1-E1

Dwg. 91 of 106

Office of Construction and Facilities Management

Department of Veterans Affairs

A  
B  
C  
D  
E  
F

FULLY SPRINKLERED

GENERAL NOTES

- A WHERE MULTIPLE OCCUPANCY SENSORS ARE SHOWN IN A COMMON ROOM OR CORRIDOR, WIRE SENSORS IN PARALLEL FOR COMMON ZONE CONTROL.
- B WHERE SWITCHES ARE SHOWN IN SPACES CONTROLLED BY OCCUPANCY SENSORS, WIRE SENSOR RELAY PACK AHEAD OF LOCAL SWITCHING. (EXCEPT LIFE SAFETY CIRCUITS)
- C PROVIDE DEDICATED NEUTRAL FOR ALL 120V/277V CIRCUITS.
- D COORDINATE ALL LIGHTING FIXTURE LOCATIONS WITH ARCHITECTURAL REFLECTED CEILING PLANS.
- E OCCUPANCY SENSOR MANUFACTURERS SHALL SUBMIT AN 1/8" SCALE FLOOR PLAN SHOWING PROPOSED LAYOUT WITH DEVICES CLEARLY IDENTIFIED DURING SHOP DRAWING REVIEW. OCCUPANCY SENSOR SHOP DRAWING SUBMITTAL MISSING THIS INFORMATION WILL BE REJECTED. REQUEST AutoCAD FLOOR PLANS WELL IN ADVANCE OF SHOP DRAWINGS TO ENSURE REASONABLE TIME OF DELIVERY.
- F COORDINATE OCCUPANCY SENSOR AIMING AND PLACEMENT WITH MANUFACTURER PRIOR TO INSTALLATION.
- G WIRE ALL EXIT SIGNS AHEAD OF LOCAL SWITCHING.
- H CONTRACTOR SHALL INSTALL ELECTRICAL CONDUIT/FEEDERS TIGHT TO STRUCTURE TO ALLOW FOR REQUIRED CLEARANCES AROUND OTHER TRADES ABOVE CEILING EQUIPMENT.
- J PROVIDE PROGRAMMED RAPID START BALLASTS FOR ALL FLUORESCENT FIXTURES AND SUBMIT BALLAST INFORMATION DURING SHOP DRAWING REVIEW.
- K (1) EACH BRANCH CIRCUIT HOMERUN SHALL HAVE NO MORE THAN THREE CIRCUITS. EACH BRANCH CIRCUIT SHALL HAVE A SEPARATE NEUTRAL AND COMMON/SHARED GREEN INSULATED EQUIPMENT GROUNDING CONDUCTOR
- L MULTIGANG BACKBOXES FOR DIFFERENT VOLTAGES AND TYPES OF EMERGENCY AND NORMAL BRANCH WIRING DEVICES SHALL HAVE DIVIDERS BETWEEN DEVICES.
- M INCLUDE ALL WORK NECESSARY TO ACCOMMODATE PHASING. REFER TO ARCHITECTURAL DRAWINGS AND GENERAL REQUIREMENTS SECTION 01 00 00.
- N REFER TO ARCHITECTURAL DRAWINGS FOR RATED WALL LOCATIONS.
- O REFER TO ARCHITECTURAL ELEVATIONS FOR EXACT LOCATIONS OF DEVICES MOUNTED ABOVE OR BELOW CASEWORK, FURNITURE, LAVATORIES, ETC.
- P UNDER DEDUCT ALTERNATE 1, ALL LIGHTING FIXTURE TYPE EFF SHALL BECOME EFF2.
- Q INCLUDE ALL WORK, INCLUDING BUT NOT LIMITED TO, SWITCHES SWITCH LEGS, BALLASTS, EMERGENCY SHUNT TRIP DEVICES, OCCUPANCY SENSORS, POWER PACKS, ETC TO PROVIDE A COMPLETE AND OPERATIONAL LIGHTING SYSTEM WITHIN EACH SPACE. ALL DEVICES/SWITCH LEGS/ ETC MAY NOT BE SHOWN FOR CLARITY OF DRAWINGS.
- R WHERE LOW VOLTAGE SWITCHES ARE SHOWN IN SPACES CONTROLLED BY OCCUPANCY SENSORS, WIRE LV SWITCHES TO POWER PACK/ SENSORS AS "VACANCY SENSOR" (MANUAL ON, AUTO/MANUAL OFF). PROVIDE SECOND POWER PACK WHERE STEP DIMMING OR DUAL LEVEL LIGHTING IS SHOWN. EMERGENCY LIGHTING SHALL NOT BE CONTROLLED VIA AUTOMATIC MEANS.

NOTES

1. CONNECT NEW STAIRWELL LIGHTING/CIRCUITRY TO EXISTING STAIRWELL LIGHTING CIRCUIT ON FLOOR BELOW.
2. LOCATE PHOTOCELL INPUT DEVICE ON ROOF ABOVE. INSTALL ON ELEVATOR MACHINE ROOM EXTERIOR WALL.
3. CONNECT TO LOCAL 120V RECEPTACLE CIRCUIT.
4. RUN INDICATED LIGHTING FIXTURE SWITCH LEGS THROUGH "LPCS" FIXTURES WITHOUT A SUBSCRIPT SHALL NOT BE RUN THROUGH "LPCS" (WIRE AHEAD OF RELAY PANEL). PROVIDE LOCAL CONTROL (OCCUPANCY SENSOR, TOGGLE SWITCH, ETC. AS INDICATED). UNDER BASE BID, PROVIDE ALL WORK SHOWN IN THIS AREA. UNDER DEDUCT ALTERNATE, REFER TO SHEET 1-E10.
5. ELEVATOR HOST WAY LIGHTING. LIGHTS ARE TO BE STACKED VERTICALLY IN A BACK CORNER WALL FOR A SINGLE ELEVATOR OR ON THE BACK WALL BETWEEN THE ELEVATOR DIVIDER BEAMS. THE EXTREME TOP NEW AND BOTTOM EXISTING. PROVIDED UNDER PHASE I) FIXTURES SHALL BE MOUNTED TO ILLUMINATE THE PIT AREA WHEN THE CAR IS AT THE BOTTOM LANDING AND THE CAR TOP WHEN THE CAR IS AT THE TOP LANDING. CONNECTIONS BETWEEN FIXTURES SHALL BE MADE WITH 0.75" SURFACE MOUNTED EMT. SHAFT WILL CONSIST OF TWO(2) 4" FIXTURES AT BASEMENT/EXISTING, PROVIDED UNDER PHASE I) AND FOURTH FLOOR (NEW) LEVEL AND ONE(1) AT FIRST (EXISTING, PROVIDED UNDER PHASE I), SECOND NEW, AND THIRD NEW FLOOR. PROVIDE 4 WAY LIGHT SWITCH AT THE TOP (NEW) OF THE PIT LADDER AND FIVE FEET ABOVE THE TOP TERMINAL LANDING (NEW) AT THE INSIDE FRONT WALL NEAR THE HALL BUTT. CONNECT NEW LIGHTING CIRCUITRY TO EXISTING ELEVATOR PIT LIGHTING CIRCUIT. RUN 2 #12 #12 GND IN 0.75" C. COORDINATE ALL WORK WITH LEXINGTON VAMC ELEVATOR MECHANIC. TO ENSURE CONSISTENCY THROUGHOUT THE CAMPUS AND EXACT SWITCH PLACEMENT WITHIN ELEVATOR SHAFT. REFERENCE TRANSPORT SYSTEMS (ELEVATORS) DESIGN MANUAL FOR SUPPLEMENTAL INFORMATION.
7. CIRCUIT ALL NEW FLUORESCENT ELEVATOR SHAFT LIGHTING (PER INDIVIDUAL SHAFTS) ON SAME CIRCUIT.
8. UNDER BASE BID, PROVIDE ALL WORK SHOWN IN THIS AREA. UNDER DEDUCT ALTERNATE 4, DELETE ALL LIGHTING AND ASSOCIATED SWITCHING/OCCUPANCY SENSORS, ETC. PROVIDE TEMPORARY STRIP LIGHTING WITHIN SPACE. PROVIDE LIGHTING FIXTURE TYPE EFF7, 4 PWS OR 4 FIXTURES (12' O.C.) TOTAL OF 16. CONNECT ALL LIGHTING WITHIN SPACE TO ONE DEDICATED 20A LIGHTING CIRCUIT. PROVIDE THREE WAY LIGHTING SWITCHES AT ENTRANCES TO SPACE. COORDINATE WITH COR DURING CONSTRUCTION.
9. UNDER BASE BID, PROVIDE WORK AS INDICATED. UNDER DEDUCT ALTERNATE 4, DELETE ALL WORK ASSOCIATED TO "STAIRWELL #6 EXTENSION" INCLUDING (BUT NOT LIMITED TO) CONDUIT, CIRCUITRY, RECEPTACLES, LIGHTING, FIRE ALARM (STROBE AND FLOW / SUPERVISORY SWITCH), UNIT HEATER POWER, ETC.
10. IF DEDUCT ALTERNATE 4 IS ACCEPTED, NO EXIT SIGN OR 3-WAY SWITCH IS REQUIRED.
11. UNDER BASE BID, PROVIDE ALL WORK SHOWN IN THIS AREA. UNDER DEDUCT ALTERNATE 4, DELETE ALL LIGHTING AND ASSOCIATED SWITCHING/OCCUPANCY SENSORS, ETC. PROVIDE TEMPORARY STRIP LIGHTING WITHIN SPACE. PROVIDE LIGHTING FIXTURE TYPE EFF7, 5 PWS OR 5 FIXTURES (12' O.C.) TOTAL OF 25. CONNECT ALL LIGHTING WITHIN SPACE TO ONE DEDICATED 20A LIGHTING CIRCUIT. PROVIDE THREE WAY LIGHTING SWITCHES AT ENTRANCES TO SPACE. COORDINATE WITH COR DURING CONSTRUCTION.
12. UNDER BASE BID, PROVIDE WORK AS INDICATED. UNDER DEDUCT ALTERNATE 4, DELETE ALL WORK ASSOCIATED TO "SOUTH WEST CORNER OFFICES (#C565, #C566, #C567, #C570) INCLUDING (BUT NOT LIMITED TO) CONDUIT, CIRCUITRY, RECEPTACLES LIGHTING, FIRE ALARM, ETC.. REFER TO SHEET 1-E11 FOR ALTERNATE LAYOUT.

LIGHTING CONTROL PANEL "LCP5"							
RELAY NO.	INPUT NO.	CIRCUIT	AREA	CONTROL SEQUENCE	TIME OF DAY OFF	OVERRIDE ON (HRS) TIME OUT	INPUT MASK
1	La	LPSC-5	HEALTH ADMIN	L.V. MOMENTARY SWITCH "ON" AND "OFF" REQUIRED TIME OF DAY "OFF"	*	*	NONE
2	Lb	LPSC-5	HEALTH ADMIN	L.V. MOMENTARY SWITCH "ON" AND "OFF" REQUIRED TIME OF DAY "OFF"	*	*	NONE
3	Lc	LPSC-5	HEALTH ADMIN	L.V. MOMENTARY SWITCH "ON" AND "OFF" REQUIRED TIME OF DAY "OFF"	*	*	NONE
4	Ld	LPSC-1	NURSING SERVICES	L.V. MOMENTARY SWITCH "ON" AND "OFF" REQUIRED TIME OF DAY "OFF"	*	*	NONE
5	Le	LPSC-1	CORRIDOR	L.V. MOMENTARY SWITCH "ON" AND "OFF" REQUIRED TIME OF DAY "OFF"	*	*	NONE
6	Li	LPSC-4	QUALITY	L.V. MOMENTARY SWITCH "ON" AND "OFF" REQUIRED TIME OF DAY "OFF"	*	*	NONE
7	Lg	LPSC-6	CORRIDOR	L.V. MOMENTARY SWITCH "ON" AND "OFF" REQUIRED TIME OF DAY "OFF"	*	*	NONE
8	Lh	LPSC-6	ADMIN	L.V. MOMENTARY SWITCH "ON" AND "OFF" REQUIRED TIME OF DAY "OFF"	*	*	NONE
9	Li	SPARE	FUTURE ZONES				
10	Lj	SPARE	FUTURE ZONES				
11	Lk	SPARE	FUTURE ZONES				
12	Li	SPARE	FUTURE ZONES				
13	Lm	SPARE	FUTURE ZONES				
14	Ln	SPARE	FUTURE ZONES				
15	Lo	ELPSC-2	ADMIN				
16	Lp	SPARE	FUTURE EM ZONE				

\* - TO BE DETERMINED BY OWNER, Lx - LOW VOLTAGE MOMENTARY WALL SWITCH, EM - UL824 LISTED RELAY, PG - PHOTOCELL.

NOTES:

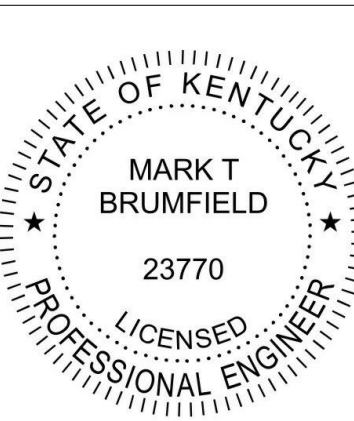
1 COORDINATE "TIME-OF-DAY-OFF" WITH LEXINGTON VAMC ENERGY ENGINEER AND/OR COR.

FIFTH FLOOR PLAN - LIGHTING

Scale: 1/8" = 1'-0"

CONSULTANTS:

**Heapy Engineering**  
Mechanical Electrical Commissioning Technology  
Nationally Recognized Leader in Sustainability / LEED  
1400 W Dorothy Lane, Dayton OH 45409-1310  
Ph: 937-224-0861 Fax: 937-224-5777 www.heapy.com  
HEAPY PROJECT No.: 2011-04007 FIRM LICENSE No.: 01528



ARCHITECT/ENGINEERS:

RDC/JOHN POE ARCHITECTS

524 FERNWOOD DRIVE  
ALTA MONTE SPRINGS,  
FLORIDA 32701  
800 362 1523 PHONE  
rreppert@rdjohnpoe.com

Drawing Title

FIFTH FLOOR PLAN - LIGHTING

Approved: Project Director

Project Title

5th FLOOR MAIN ADDITION

Location

LEXINGTON VAMC

Date

10/3/2014

Checked

MSG

Drawn

JAS

Project No.  
VA Project No. 596-329  
RDC/JPA Project No. 11003.00

Building Number  
1A

Drawing Number  
1-E3

Dwg. 93 of 106

Office of  
Construction  
and Facilities  
Management



2/10/2015 2:15:32 PM

Revisions	Date
1 Deduct Alt 5 Deduct Alt 6 Bid Set	02/10/2015 02/10/2015 10/3/2014