

[illegible]

A vertical number line with tick marks labeled A, B, C, D, E, and F from top to bottom.

[illegible][illegible]

A vertical number line with three points labeled D, E, and F. Point D is at the top, E is in the middle, and F is at the bottom. Tick marks are present for each point.

F

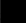
CONSULTANTS:		
	MORRISON MAIERLE, INC. <i>An Employee-Owned Company</i>	<i>Engineers Surveyors Scientists Planners</i>
	125 Schoolhouse Loop Kalispell, MT 59901 406.752.2216	

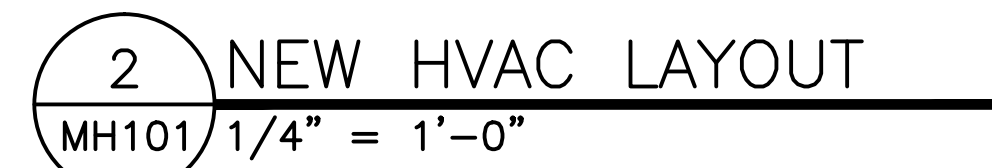
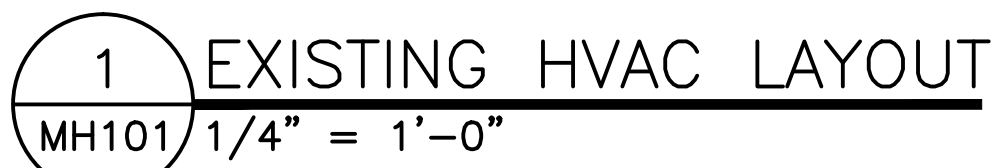
ARCHITECT/ENGINEERS:


VCI Program, Project and Construction Management

Project Title			Project Number 436-14-109	
VAMC FORT HARRISON SPD RENOVATION			Building Number 154	
			Drawing Number MH601	
Location FT. HARRISON, MONTANA			Dwg. 21 of 39	
Date 07/18/2014	Checked JTW	Drawn TCH		

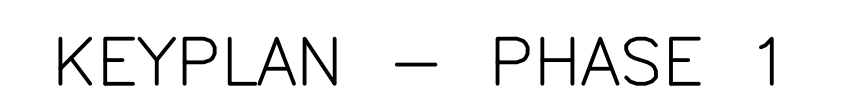
Office of
Construction
and Facilities
Management

 Department of
Veterans Affairs



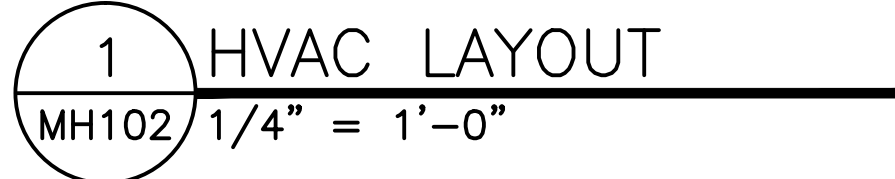
-  KEY NOTES:


 1. REMOVE EXISTING VAV BOX – OWNER SALVAGE
 2. REMOVE EXISTING DUCTWORK AND SUPPLY DIFFUSER – PATCH DUCTWORK AS REQUIRED
 3. EXISTING HVAC SYSTEM TO REMAIN
 4. CONNECT NEW RETURN AIR GRILLE TO EXISTING RETURN AIR DUCT IN THIS AREA
 5. CONNECT NEW SUPPLY AIR DUCTWORK TO EXISTING SUPPLY AIR DUCT IN THIS AREA
 6. CONNECT NEW RETURN AIR DUCTWORK TO EXISTING RETURN AIR DUCT IN THIS AREA
 7. INSTALL NEW VAV BOX IN EXISTING DUCT AT THIS LOCATION

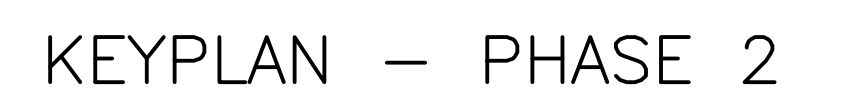


Construction Document Submission
18 July 2014

[illegible]

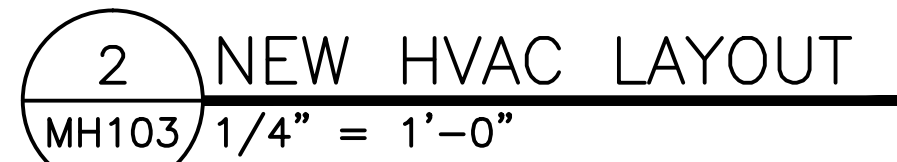
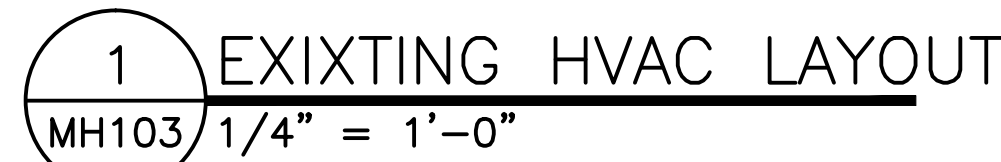


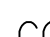
- | | |
|---|------------|
|  | KEY NOTES: |
| <p>1. NO HVAC WORK IN THIS AREA</p> <p>2. RELOCATE EXISTING THERMOSTAT</p> | |



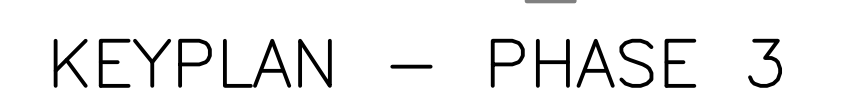
VA FORM 08-6231

1	2	3	4	5	6	7	8	9
---	---	---	---	---	---	---	---	---



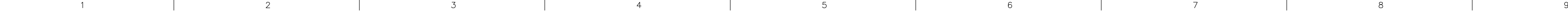
-  KEY NOTES:

 1. CONNECT TO EXISTING DUCTWORK IN THIS AREA
CONTRACTOR TO VERIFY LOCATION PRIOR TO
STARTING ANY WORK
 2. CONNECT TO EXISTING HOT WATER SUPPLY AND
HOT WATER RETURN IN THIS AREA –
CONTRACTOR TO VERIFY LOCATION PRIOR TO
STARTING ANY WORK
 3. RELOCATE DUCTWORK ADD DIFFUSERS AS SHOWN
 4. REMOVE EXISTING HEATING COIL AND PATCH
EXISTING DUCTWORK – CONTRACTOR TO VERIFY
LOCATION PRIOR TO STARTING ANY WORK
 5. NEW 12" ROUND DUCT FROM RETURN GRILL TO
EXISTING RETURN DUCT IN ADJACENT HALLWAY –
CONTRACTOR TO VERIFY LOCATION PRIOR TO
STARTING ANY WORK
 6. ADD DUCTWORK AND DIFFUSER OR GRILLE
 7. NO CHANGE – RE-BALANCE AIR ONLY



Construction Document Submission
18 July 2014

[illegible]



-
- The image shows architectural drawings of a building facade. On the left, there is a section drawing showing a cross-section of a wall with a window. To the right of this is a larger elevation drawing of a building facade. The facade features a series of windows and a central entrance area. The drawing is a line drawing with some shading to indicate depth and form.

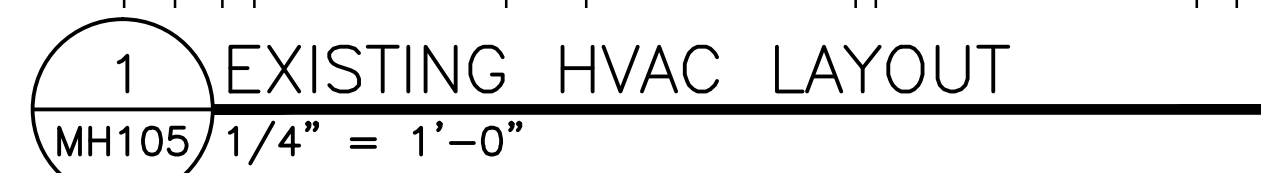
-
- 65 CFM
- 2
- PRE-STERILE
- 2
- 223A
4. EXHAUST DUCT CONTINUES - SEE 223B FOR CONTINUATION

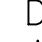


KEYPLAN - PHAS

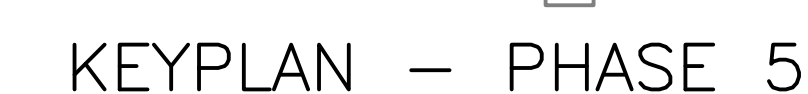
										18 Jun 2018
5	CONSULTANTS		APPROVED / MONITORS	Drawing Title	Project Title	Project Number				

1 | 2 | 3 | 4 | 5 | 6 | 7 | 8 | 9



-  KEY NOTES:

 1. REMOVE ALL HVAC SUPPLY AIR DUCTWORK AND DIFFUSERS IN THIS AREA EXCEPT AS NOTED AT EXHAUST AND RETURN AIR DUCTWORK AND GRILLES TO REMAIN
 2. REMOVE DIFFUSER AND CAP DUCTWORK NEAR EXISTING DIFFUSER – DUCTWORK TO REMAIN
 3. DUCTWORK AND DIFFUSERS TO REMAIN – EXCEPT WHERE SPECIFICALLY SHOWN TO BE REMOVED
 4. THIS ROOM DOES NOT HAVE RETURN AIR GRILLES – AT THE COMPLETION OF THE PROJECT VERIFY THAT THIS ROOM HAS POSITIVE PRESSURE WITH RESPECT TO THE ADJACENT ROOMS
 5. CONNECT TO EXISTING EXHAUST SYSTEM IN THIS AREA – CONTRACTOR TO VERIFY LOCATION PRIOR TO STARTING WORK
 6. EXHAUST DUCT CONTINUES SEE DRAWING #MH104 FOR CONTINUATION
 7. ALL OTHER DUCTWORK AND GRILLES IN THIS AREA ARE TO REMAIN
 8. THIS DUCT CONTINUES FROM PHASE 4 SEE DRAWING SHEET MH104 FOR CONTINUATION
 9. CONNECT TO EXISTING SUPPLY AIR DUCT IN THIS AREA – CONTRACTOR TO VERIFY LOCATION PRIOR TO STARTING ANY WORK



Construction Document Submission
18 July 2014

-	-	CONSULTANTS:		ARCHITECT/ENGINEERS:		Drawing Title HVAC PLAN - PHASE 5	Project Title VAMC FORT HARRISON SPD RENOVATION	Project Number 436-14-109	Office of Construction and Facilities Management	
-	-	 MORRISON MAIERLE, INC. <i>An Employee-Owned Company</i> 125 Schoolhouse Loop Kalispell, MT 59901 406.752.2216		 A&E ARCHITECTS^{PC} ARCHITECTURE INTERIORS HISTORIC 608 NORTH 29TH BILLINGS, MT 59101 PH 406.248.2633 FAX 406.248.2427 224 N HIGGINS, SUITE B MISSOULA, MT 59802 PH 406.721.5643 FAX 406.721.1887 www.aearchitects.com		 VCI Program, Project and Construction Management	Location FT. HARRISON, MONTANA	Drawing Number MH105 Dwg 26 of 39		
-	-	Revisions:		Date			Approved: Project Director AARON DRIVDAHL, PROJECT ENGINEER VAMC FORT HARRISON	Date 07/18/2014	Checked JTW	Drawn TCH
										 Department of Veterans Affairs