

6 5 4 3 2 1

A
three inches = one foot

B
one and one half inches = one foot

C
one inch = one foot

D
three quarters inch = one foot

E
one half inch = one foot

F
three eighths inch = one foot

G
one quarter inch = one foot

H
one eighth inch = one foot

I
one sixteenth inch = one foot

J
one thirty second inch = one foot

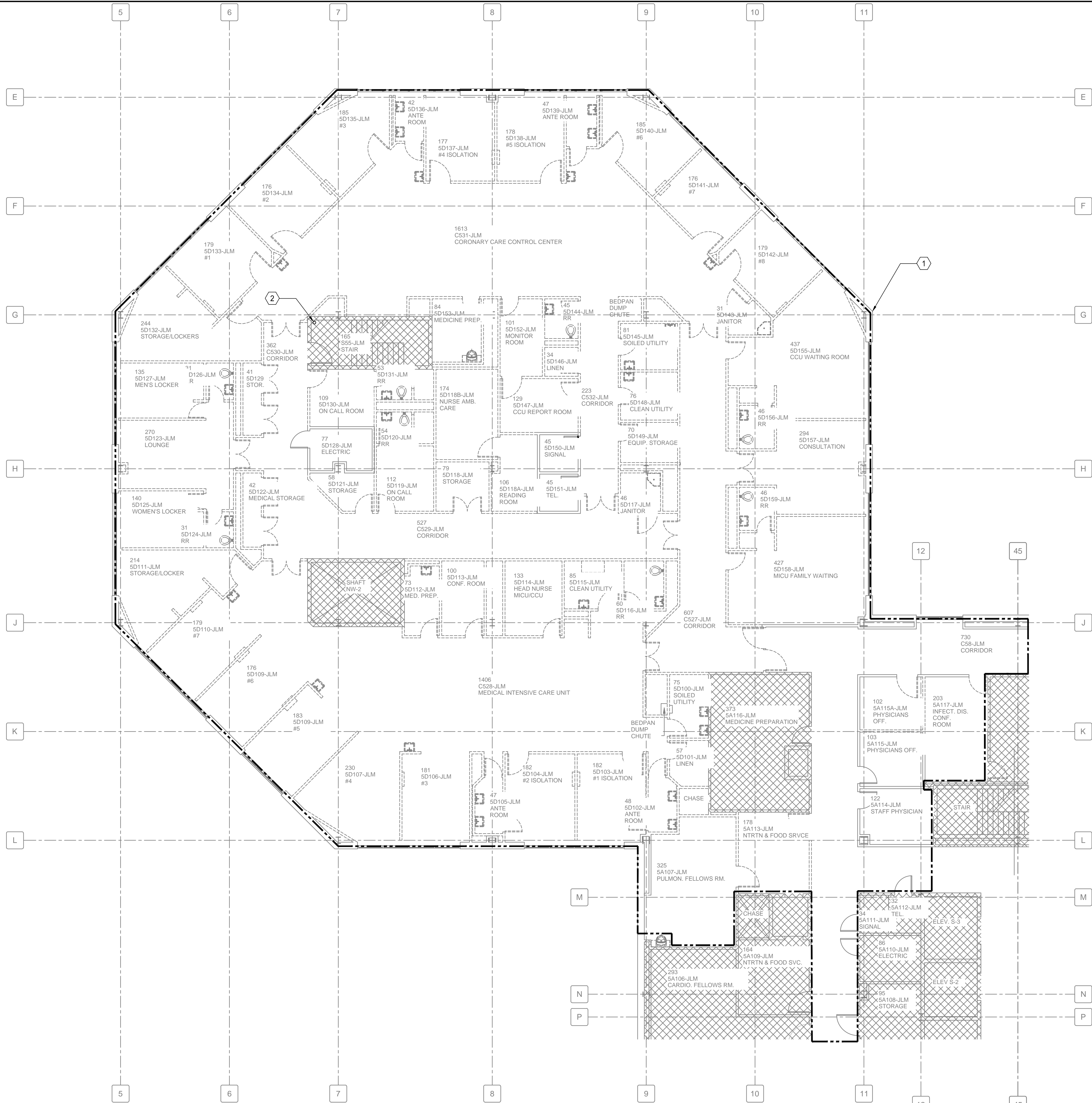
K
one sixty fourth inch = one foot

L
one one hundred twenty eighth inch = one foot

M
one two hundred fifty sixth inch = one foot

N
one five hundred twelfth inch = one foot

P



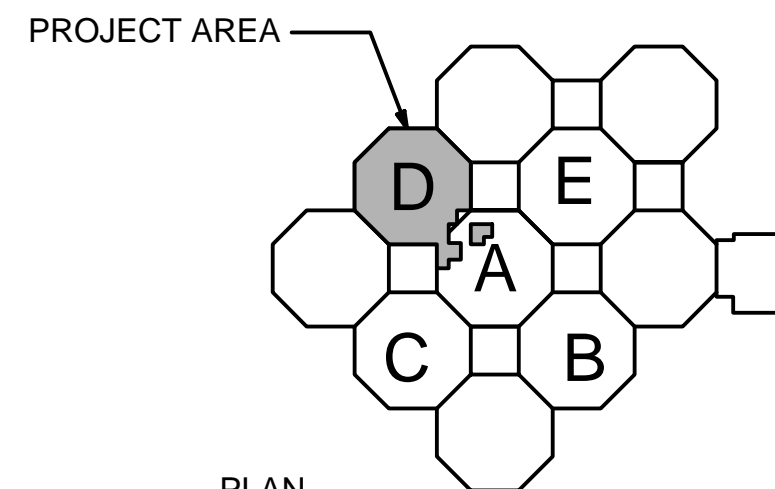
6E FIRE PROTECTION DEMOLITION PLAN - 5D
1/8"=1'-0"

GENERAL DEMOLITION NOTES

1. PRIOR TO PERFORMING WORK ON ANY PORTION OF ANY FIRE SPRINKLER SYSTEM OF THIS FACILITY THE CONTRACTOR SHALL ISOLATE AND DRAIN ALL SYSTEMS SERVING THE FACILITY.
2. IT IS THE DECLARED AND ACKNOWLEDGED INTENTION AND MEANING TO REPLACE ALL OF THE SPRINKLER HEADS THAT FORM A PART OF THE FACILITY FIRE SPRINKLER SYSTEM, TO DEMOLISH PENDANT HEADS AND BRANCH LINES AS REQUIRED TO SUPPORT THE DEMOLITION OF EXISTING CEILINGS AND THE INSTALLATION OF NEW CEILINGS. SEE ARCHITECTURAL DRAWINGS FOR NEW FINISHES AND CEILING GRID PATTERNS.
3. THE EXISTING CONDITIONS DEPICTED ARE BASED FROM OWNER-FURNISHED DOCUMENTS AND LIMITED FIELD OBSERVATIONS. EXISTING ELEMENTS AND CONDITIONS CONCEALED BY EQUIPMENT AND FINISHES WERE NOT OBSERVED OR INVESTIGATED. ONCE DEMOLITION WORK HAS BEGUN REPORT ANY CONFLICTS TO THE DESIGNER (BES). THE CONTRACTOR SHALL MAKE ADJUSTMENTS NECESSARY TO INSTALL A COMPLETE AND OPERABLE SYSTEMS IN ACCORDANCE WITH LOCAL AUTHORITY HAVING JURISDICTION, APPLICABLE CODES AND STANDARDS.
4. CONTRACTOR SHALL DEVELOP A INFECTION CONTROL PLAN AND SAFETY PLAN FOR APPROVAL BY THE CONTRACTING OFFICER'S REPRESENTATIVE (COR) PRIOR TO STARTING WORK.
5. PROTECT AND MAINTAIN EXISTING FIRE STOPPING AND EXISTING APPLIED FIRE PROOFING. RESTORE TO EXISTING RATING WHERE DAMAGED OR REMOVED AS PART OF WORK.
6. INSTALL TEMPORARY DEBRIS AND DUST BARRIERS AND VESTIBULES IN ACCORDANCE WITH INFECTION CONTROL PLAN. TEMPORARY ARE NOT TO RESTRICT REQUIRED MEANS OF EGRESS PATHS.

DEMOLITION KEYED NOTES

- 1 AREA OF WORK REQUIRING DEMOLITION OF EXISTING SPRINKLER HEADS. SEE GENERAL DEMOLITION NOTE 2 THIS DWG FOR ADDITIONAL INFORMATION.
- 2 EXISTING 6" FIRE SPRINKLER RISER.



KEY PLAN
5D F.F.E.: 464'-1 3/4"
PROJECT AREA: 14,700 S.F.

CONSTRUCTION DOCUMENTS
FULLY SPRINKLERED

CONSULTANTS:

ARCHITECT/ENGINEERS:



BES DESIGN/BUILD, LLC
766 Middle St, Fairhope, AL 36532
Phone: 251.990.5778
Fax: 251.990.3716

Drawing Title
**FIRE PROTECTION
DEMOLITION PLAN - 5D**

Approved: Project Director

Project Title
**IMPROVE 5D DIALYSIS
FUNCTIONAL DEFICIENCIES**

Location
**4300 WEST 7TH STREET
LITTLE ROCK, AR 72205**

Date
2014.10.31

Drawn
CMD

Checked
RLD

Project Number
598-13-109

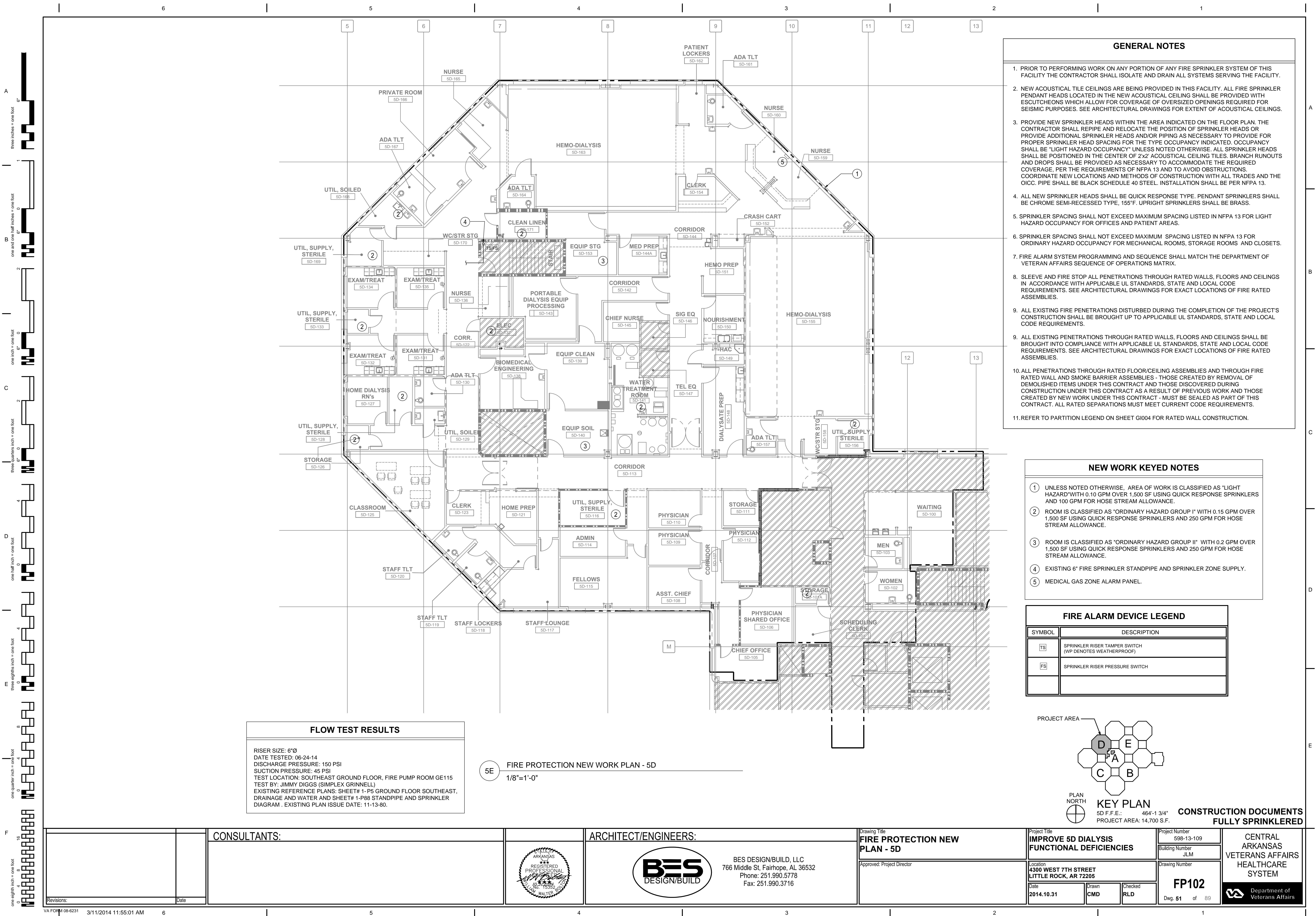
Building Number
JLM

Drawing Number
FP101

Dwg. 50 of 89

CENTRAL
ARKANSAS
VETERANS AFFAIRS
HEALTHCARE
SYSTEM





- GENERAL NOTES
1.

PRIOR TO PERFORMING WORK ON ANY PORTION OF ANY FIRE SPRINKLER SYSTEM OF THIS FACILITY THE CONTRACTOR SHALL ISOLATE AND DRAIN ALL SYSTEMS SERVING THE FACILITY.
2.

NEW ACOUSTICAL TILE CEILINGS ARE BEING PROVIDED IN THIS FACILITY. ALL FIRE SPRINKLER PENDANT HEADS LOCATED IN THE NEW ACOUSTICAL CEILING SHALL BE PROVIDED WITH ESCUTCHEONS WHICH ALLOW FOR COVERAGE OF OVERSIZED OPENINGS REQUIRED FOR SEISMIC PURPOSES. SEE ARCHITECTURAL DRAWINGS FOR EXTENT OF ACOUSTICAL CEILINGS.
3.

PROVIDE NEW SPRINKLER HEADS WITHIN THE AREA INDICATED ON THE FLOOR PLAN. THE CONTRACTOR SHALL REPIPE AND RELOCATE THE POSITION OF SPRINKLER HEADS OR PROVIDE ADDITIONAL SPRINKLER HEADS AND/OR PIPING AS NECESSARY TO PROVIDE FOR PROPER SPRINKLER HEAD SPACING FOR THE TYPE OCCUPANCY INDICATED. OCCUPANCY SHALL BE "LIGHT HAZARD OCCUPANCY" UNLESS NOTED OTHERWISE. ALL SPRINKLER HEADS SHALL BE POSITIONED IN THE CENTER OF 2'x2' ACOUSTICAL CEILING TILES. BRANCH RUNOUTS AND DROPS SHALL BE PROVIDED AS NECESSARY TO ACCOMMODATE THE REQUIRED COVERAGE, PER THE REQUIREMENTS OF NFPA 13 AND TO AVOID OBSTRUCTIONS. COORDINATE NEW LOCATIONS AND METHODS OF CONSTRUCTION WITH ALL TRADES AND THE OICC. PIPE SHALL BE BLACK SCHEDULE 40 STEEL. INSTALLATION SHALL BE PER NFPA 13.
4.

ALL NEW SPRINKLER HEADS SHALL BE QUICK RESPONSE TYPE. PENDANT SPRINKLERS SHALL BE CHROME SEMI-RECESSED TYPE, 155°F. UPRIGHT SPRINKLERS SHALL BE BRASS.
5.

SPRINKLER SPACING SHALL NOT EXCEED MAXIMUM SPACING LISTED IN NFPA 13 FOR LIGHT HAZARD OCCUPANCY FOR OFFICES AND PATIENT AREAS.
6.

SPRINKLER SPACING SHALL NOT EXCEED MAXIMUM SPACING LISTED IN NFPA 13 FOR ORDINARY HAZARD OCCUPANCY FOR MECHANICAL ROOMS, STORAGE ROOMS AND CLOSETS.
7.

FIRE ALARM SYSTEM PROGRAMMING AND SEQUENCE SHALL MATCH THE DEPARTMENT OF VETERAN AFFAIRS SEQUENCE OF OPERATIONS MATRIX.
8.

SLEEVE AND FIRE STOP ALL PENETRATIONS THROUGH RATED WALLS, FLOORS AND CEILINGS IN ACCORDANCE WITH APPLICABLE UL STANDARDS, STATE AND LOCAL CODE REQUIREMENTS. SEE ARCHITECTURAL DRAWINGS FOR EXACT LOCATIONS OF FIRE RATED ASSEMBLIES.
9.

ALL EXISTING FIRE PENETRATIONS DISTURBED DURING THE COMPLETION OF THE PROJECT'S CONSTRUCTION SHALL BE BROUGHT UP TO APPLICABLE UL STANDARDS, STATE AND LOCAL CODE REQUIREMENTS.
9.

ALL EXISTING PENETRATIONS THROUGH RATED WALLS, FLOORS AND CEILINGS SHALL BE BROUGHT INTO COMPLIANCE WITH APPLICABLE UL STANDARDS, STATE AND LOCAL CODE REQUIREMENTS. SEE ARCHITECTURAL DRAWINGS FOR EXACT LOCATIONS OF FIRE RATED ASSEMBLIES.
10.

ALL PENETRATIONS THROUGH RATED FLOOR/CEILING ASSEMBLIES AND THROUGH FIRE RATED WALL AND SMOKE BARRIER ASSEMBLIES - THOSE CREATED BY REMOVAL OF DEMOLISHED ITEMS UNDER THIS CONTRACT AND THOSE DISCOVERED DURING CONSTRUCTION UNDER THIS CONTRACT AS A RESULT OF PREVIOUS WORK AND THOSE CREATED BY NEW WORK UNDER THIS CONTRACT - MUST BE SEALED AS PART OF THIS CONTRACT. ALL RATED SEPARATIONS MUST MEET CURRENT CODE REQUIREMENTS.
11.

REFER TO PARTITION LEGEND ON SHEET G1004 FOR RATED WALL CONSTRUCTION.

- NEW WORK KEYED NOTES
- 1

UNLESS NOTED OTHERWISE, AREA OF WORK IS CLASSIFIED AS "LIGHT HAZARD" WITH 0.10 GPM OVER 1,500 SF USING QUICK RESPONSE SPRINKLERS AND 100 GPM FOR HOSE STREAM ALLOWANCE.
- 2

ROOM IS CLASSIFIED AS "ORDINARY HAZARD GROUP I" WITH 0.15 GPM OVER 1,500 SF USING QUICK RESPONSE SPRINKLERS AND 250 GPM FOR HOSE STREAM ALLOWANCE.
- 3

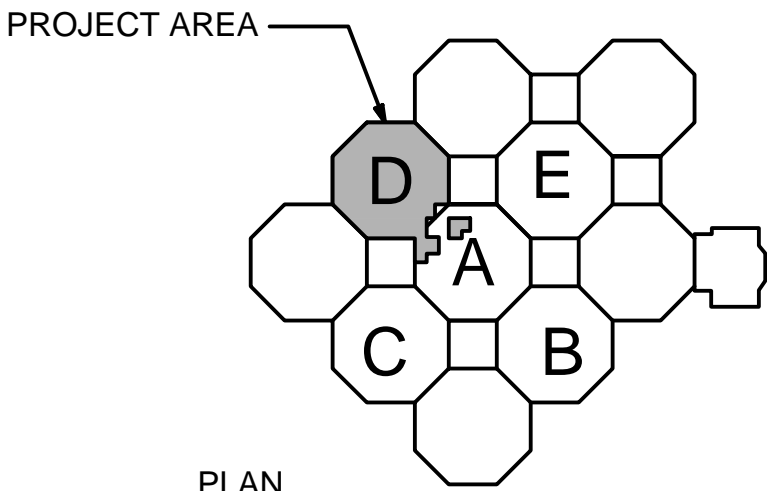
ROOM IS CLASSIFIED AS "ORDINARY HAZARD GROUP II" WITH 0.2 GPM OVER 1,500 SF USING QUICK RESPONSE SPRINKLERS AND 250 GPM FOR HOSE STREAM ALLOWANCE.
- 4

EXISTING 6" FIRE SPRINKLER STANDPIPE AND SPRINKLER ZONE SUPPLY.
- 5

MEDICAL GAS ZONE ALARM PANEL.

FIRE ALARM DEVICE LEGEND

SYMBOL	DESCRIPTION
TS	SPRINKLER RISER TAMPER SWITCH (WP DENOTES WEATHERPROOF)
FS	SPRINKLER RISER PRESSURE SWITCH



PLAN NORTH

KEY PLAN

5D F.F.E.: 464'-1 3/4"

PROJECT AREA: 14,700 S.F.

FLOW TEST RESULTS

RISER SIZE: 6"Ø
DATE TESTED: 06-24-14
DISCHARGE PRESSURE: 150 PSI
SUCTION PRESSURE: 45 PSI
TEST LOCATION: SOUTHEAST GROUND FLOOR, FIRE PUMP ROOM GE115
TEST BY: JIMMY DIGGS (SIMPLEX GRINNELL)
EXISTING REFERENCE PLANS: SHEET# 1-P5 GROUND FLOOR SOUTHEAST, DRAINAGE AND WATER AND SHEET# 1-P88 STANDPIPE AND SPRINKLER DIAGRAM. EXISTING PLAN ISSUE DATE: 11-13-80.

5E

FIRE PROTECTION NEW WORK PLAN - 5D

1/8"=1'-0"

Revisions:		CONSULTANTS:		ARCHITECT/ENGINEERS:		Drawing Title		Project Title		Project Number		CENTRAL ARKANSAS VETERANS AFFAIRS HEALTHCARE SYSTEM Department of Veterans Affairs	
				BES DESIGN/BUILD		FIRE PROTECTION NEW PLAN - 5D		IMPROVE 5D DIALYSIS FUNCTIONAL DEFICIENCIES		598-13-109			
				251.990.5778		Approved: Project Director		Location		Building Number			
				251.990.3716				4300 WEST 7TH STREET LITTLE ROCK, AR 72205		JLM			
								Date		Drawing Number			
								2014.10.31		FP102			
								Drawn		Checked		Dwg. 51 of 89	
								CMD		RLD			

three inches = one foot

one and one half inches = one foot

one inch = one foot

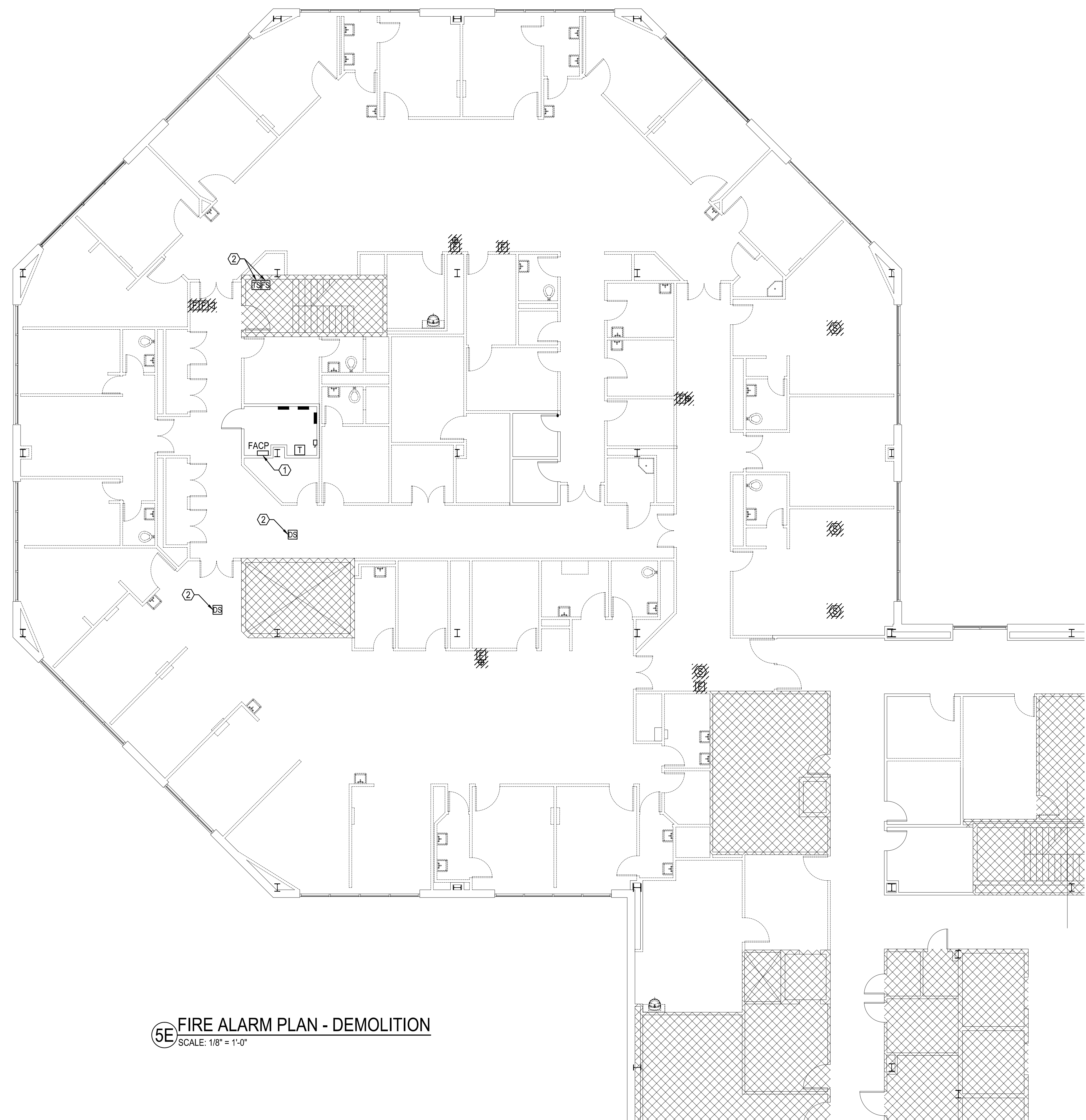
three quarters inch = one foot

one half inch = one foot

three eighths inch = one foot

one quarter inch = one foot

one eighth inch = one foot



5E FIRE ALARM PLAN - DEMOLITION
SCALE: 1/8" = 1'-0"

- GENERAL DEMOLITION NOTES
1. ALL ITEMS SHOWN WITH HATCHED LINES INDICATE ITEMS TO BE DEMOLISHED. SEE ARCHITECTURAL DRAWINGS AND CODED DEMOLITION NOTES FOR ADDITIONAL INFORMATION. COORDINATE DEMOLITION WITH ALL TRADES.

2. LOCATION OF EXISTING EQUIPMENT, CONDUITS, OUTLETS, DEVICES, CONTROLS AND ALL CONCEALED WORKS, ETC. ARE APPROXIMATE.

3. NOT ALL CIRCUITS AND DEVICES ARE INDICATED. FOR EACH DEVICE INDICATED FOR DEMOLITION THERE IS A CIRCUIT OR FEEDER BACK TO THE POINT OF ORIGIN. ALL CIRCUITS AND DEVICES SHALL BE DEMOLISHED UNLESS NOTED OTHERWISE.

4. EXISTING PIPING AND/OR CONDUIT RUN CONCEALED IN FLOOR SLAB OR UNDERGROUND AND NOT INDICATED OR SPECIFIED FOR REUSE IN NEW WORK SHALL BE ABANDONED UNLESS NOTED OTHERWISE. CUT PIPING AND/OR CONDUIT AT FLOOR. ALL REPAIRS SHALL BE BY TRADES SKILLED IN FINISH WORK. MODIFY EXISTING OPENINGS TO BE REUSED IN NEW WORK BY SAW CUTTING OR CORING.

5. ALL DEVICES NOT INDICATED FOR DEMOLITION SHALL REMAIN OPERABLE DURING CONSTRUCTION.

6. ALL OPENINGS AND SURFACES MADE BARE BY DEMOLITION AND/OR REMOVAL OF OUTLETS, EQUIPMENT, CONTROLS, ETC. SHALL BE REPAIRED AND/OR PATCHED TO MATCH ADJACENT FINISH. PREPARE SURFACES TO RECEIVE NEW FINISH. SEE ARCHITECTURAL DRAWINGS FOR ADDITIONAL INFORMATION. ALL REPAIRS AND NEW FINISH SHALL BE BY TRADES SKILLED IN FINISH WORK.

7. DURING THE LIFE OF THE CONTRACT (CONSTRUCTION AND DEMOLITION TO POINT OF BENEFICIAL OCCUPANCY BY OWNER), THE CONTRACTOR SHALL PROTECT ALL SYSTEMS OR PORTIONS OF SYSTEMS TO REMAIN FOR REUSE FROM DAMAGE. ALL SYSTEMS SHALL BE TESTED IN SERVICE AFTER COMPLETION OF THE CONTRACT AND MADE COMPLETE AND OPERABLE AT NO ADDITIONAL COST TO THE GOVERNMENT.

8. SEE ARCHITECTURAL DRAWINGS AND SPECIFICATIONS FOR ADDITIONAL INFORMATION. COORDINATE ALL DEMOLITION WITH ALL TRADES INVOLVED.

9. ALL ELECTRICAL WORK SHALL BE IN ACCORDANCE WITH THE LATEST EDITIONS OF THE NATIONAL ELECTRIC SAFETY CODE (ANSI/IEEE C-2) AND THE NATIONAL ELECTRIC CODE (NFPA 70).

- DEMOLITION NOTES
1. EXISTING FIRE ALARM CONTROL PANEL (FACP) SHALL BE PROTECTED FROM DAMAGE FOR REUSE IN NEW WORK.

2. EXISTING FIRE ALARM DEVICE SHALL REMAIN AND BE PROTECTED FROM DAMAGE FOR REUSE IN NEW WORK.

FIRE ALARM DEVICE LEGEND

SYMBOL	DESCRIPTION
FACP	ADDRESSABLE FIRE ALARM CONTROL PANEL
F	DOUBLE ACTION PUSH/PULL STATION
DD	ADDRESSABLE 4-WIRE DUCT SMOKE DETECTOR HOUSING AND 49" SAMPLING TUBE. DEVICE IS INSTALLED IN SUPPLY DUCT OF UNIT
S	ADDRESSABLE SSD SENSOR BASE WITH OC2 PHOTO. SMOKE SENSOR
F	MULTI-CANDELA STROBE-ONLY, RED. (FIELD SET CANDELA RATING, 15 CANDELA UNO)
F	MULTI-CANDELA HORN/STROBE, RED. (FIELD SET CANDELA RATING, 15 CANDELA UNO)
⊠	DITEK AC SURGE SUPPRESSOR
~	END-OF-LINE RESISTOR
A	FIRE ALARM WIRING WITH WIRING CODE INDICATED (SEE WIRE LEGEND)
IDC	INITIATION DEVICE CIRCUIT - ADDRESSABLE
NAC	NOTIFICATION APPLIANCE CIRCUIT

GRAPHIC SCALE
1/8"=1'-0"
SCALE IN FEET

PLAN NORTH

KEY PLAN
5D F.F.E.: 464'-1 3/4"
PROJECT AREA: 14,700 S.F.

CONSTRUCTION DOCUMENTS
FULLY SPRINKLERED

Revisions:		CONSULTANTS:		ARCHITECT/ENGINEERS:		Drawing Title FIRE ALARM PLAN - DEMOLITION		Project Title IMPROVE 5D DIALYSIS FUNCTIONAL DEFICIENCIES		Project Number 598-13-109		CENTRAL ARKANSAS VETERANS AFFAIRS HEALTHCARE SYSTEM Department of Veterans Affairs	
Date				 BES DESIGN/BUILD 766 Middle St, Fairhope, AL 36532 Phone: 251.990.5778 Fax: 251.990.3716		Approved: Project Director		Location 4300 WEST 7TH STREET LITTLE ROCK, AR 72205		Building Number JLM			
								Date 2014.10.31		Drawn R.D.			

VA FORM 08-6231 3/11/2014 11:55:01 AM 6

5

4

3

2

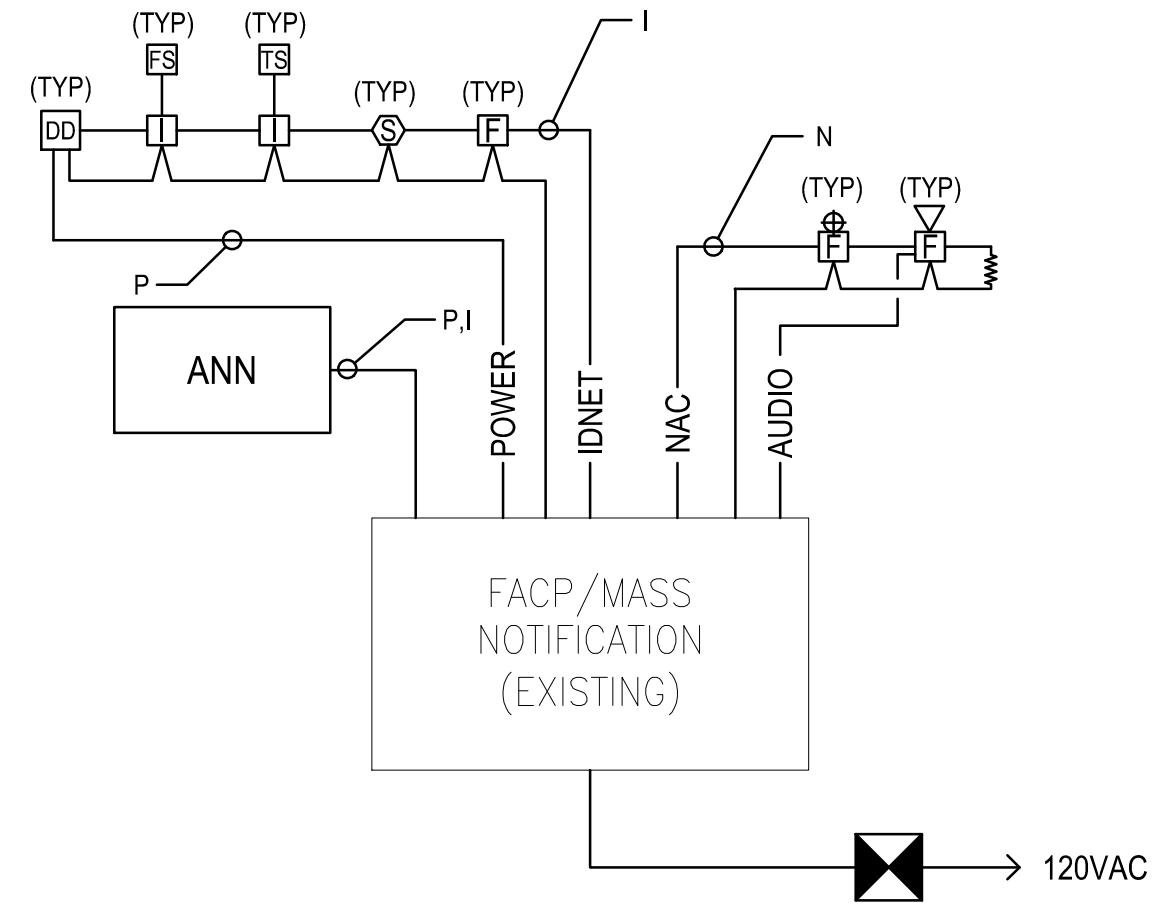
1

A
three inches = one foot
1
0
6
B
one and one half inches = one foot
2
0
6
C
one inch = one foot
2
0
6
D
three quarters inch = one foot
4
0
6
E
one half inch = one foot
4
0
6
F
three eighths inch = one foot
8
0
6
G
one quarter inch = one foot
16
0
6
H
one eighth inch = one foot



GENERAL FIRE ALARM NOTES

- ALL STROBES AND COMBINATION HORN/STROBES AND SPEAKER/STROBES SHALL BE INSTALLED SUCH THAT THE BOTTOM OF THE DEVICE BOX IS 80" ABOVE THE FINISHED FLOOR (AFF). ALL MANUAL PULL STATIONS SHALL BE INSTALLED SUCH THAT THE CENTERLINE OF THE DEVICE IS 48" ABOVE THE FINISHED FLOOR (AFF).
- ALL CONTROL RELAYS OR ZAMs, EXCLUDING ONES CONTROLLING DOOR HOLDERS, SHALL BE MOUNTED WITHIN 3'-0" OF THE CONTROLLED DEVICE.
- DO NOT RUN AC VOLTAGE WIRING WITH FIRE ALARM WIRING.
- DO NOT RUN AUDIO WIRING WITH ADDRESSABLE DEVICE WIRING.
- ALL SMOKE DETECTORS SHALL BE PROTECTED FROM JOBSITE ELEMENTS UNTIL FINAL CHECK-OUT.
- CONTRACTOR SHALL PROVIDE A FIVE WORKING DAY NOTICE PRIOR TO SYSTEM CHECK-OUT.
- DO NOT INSTALL SMOKE DETECTORS WITHIN 4'-0" OF VENTILATION OUTLET OR INLETS.
- ALL STROBES/HORN STROBES INDICATED ARE 16CD UNLESS OTHERWISE NOTED.
- ALL CIRCUITS ARE 'DC' UNLESS NOTED OTHERWISE(UNO). WIRING FOR 'DC' CIRCUITS SHALL NOT BE PERMITTED IN THE SAME CONDUIT WITH 'AC' CIRCUITS.
- DUCT DETECTORS SHALL BE PLACED IN A NEMA RATED ENCLOSURE IF PLACED IN A NON-CONDITIONED ENVIRONMENT.
- ALL SYSTEM PROGRAMMING AND INTERFACE REQUIREMENTS SHALL BE THE RESPONSIBILITY OF THE CONTRACTOR.
- MINIMUM CONDUIT SIZE PERMITTED SHALL BE 3/4".
- ALL FIRE ALARM DEVICES SHALL BE NEW UNLESS NOTED OTHERWISE.
- ALL NEW FIRE ALARM DEVICES SHALL BE COMPATIBLE WITH THE EXISTING EDWARDS EST3 FIRE ALARM CONTROL PANEL.

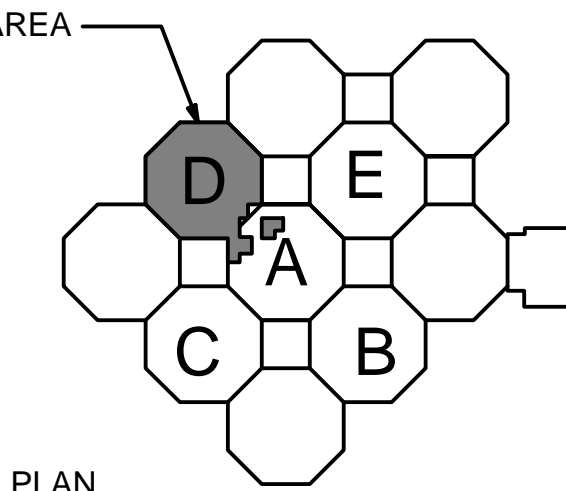


1C TYPICAL FIRE ALARM RISER DIAGRAM

NOTES:
1. PROVIDE 20A BREAKER, PAINTED RED.

WIRE LEGEND

CODE	FUNCTION	DESCRIPTION
P	24VDC POWER CIRCUIT	2 - #14 THHN
N	AUDIO/VISUAL CIRCUIT	2 - #14 THHN
I	ADDRESSABLE CIRCUIT	1 - #18 TW/SHLD PAIR
A	AUDIO CIRCUIT	1 - #14 TW/SHLD PAIR



KEY PLAN

5D F.F.E.: 464'-1 3/4"
PROJECT AREA: 14,700 S.F.

CONSTRUCTION DOCUMENTS
FULLY SPRINKLERED

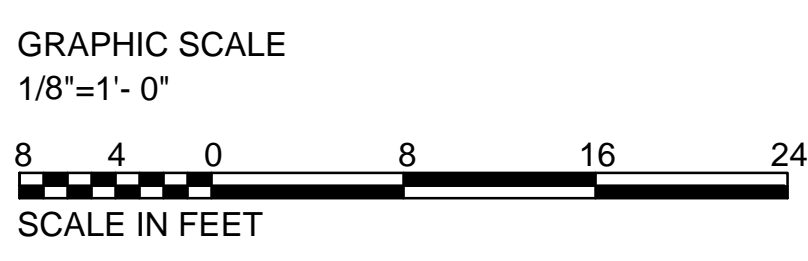
CENTRAL
ARKANSAS
VETERANS AFFAIRS
HEALTHCARE
SYSTEM



FIRE ALARM DEVICE LEGEND	
SYMBOL	DESCRIPTION
FACP	ADDRESSABLE FIRE ALARM CONTROL PANEL
F	DOUBLE ACTION PUSH/PULL STATION
DD	ADDRESSABLE 4-WIRE DUCT SMOKE DETECTOR HOUSING AND 49" SAMPLING TUBE. DEVICE IS INSTALLED IN SUPPLY DUCT OF UNIT
S	ADDRESSABLE SSD SENSOR BASE WITH OC2 PHOTO SMOKE SENSOR
F	MULTI-CANDELA STROBE-ONLY, RED, (FIELD SET CANDELA RATING, 15 CANDELA UNO)
S	MULTI-CANDELA SPEAKER/STROBE, RED, (FIELD SET CANDELA RATING, 15 CANDELA UNO)
DITEK	DITEK AC SURGE SUPPRESSOR
XXX W	END-OF-LINE RESISTOR (W/ VALUE OF RESISTANCE IN OHMS INDICATED)
A	FIRE ALARM WIRING WITH WIRING CODE INDICATED (SEE WIRE LEGEND)
IDC	INITIATION DEVICE CIRCUIT - ADDRESSABLE
NAC	NOTIFICATION APPLIANCE CIRCUIT

5E FIRE ALARM PLAN - NEW WORK

SCALE: 1/8" = 1'-0"



Revisions:		CONSULTANTS:		ARCHITECT/ENGINEERS:		Drawing Title		Project Title		Project Number		CENTRAL ARKANSAS VETERANS AFFAIRS HEALTHCARE SYSTEM	
				BES DESIGN/BUILD		FIRE ALARM PLAN - NEW WORK		IMPROVE 5D DIALYSIS FUNCTIONAL DEFICIENCIES		598-13-109			
				BES DESIGN/BUILD		Approved: Project Director		Location		Building Number			
				BES DESIGN/BUILD				4300 WEST 7TH STREET		JLM			
				BES DESIGN/BUILD				LITTLE ROCK, AR 72205					
				BES DESIGN/BUILD				Date		Drawing Number			
				BES DESIGN/BUILD				2014.10.31		FA101			
				BES DESIGN/BUILD				Drawn		Checked		Dwg. 53 of 89	
				BES DESIGN/BUILD				R.D.		J.P.			