

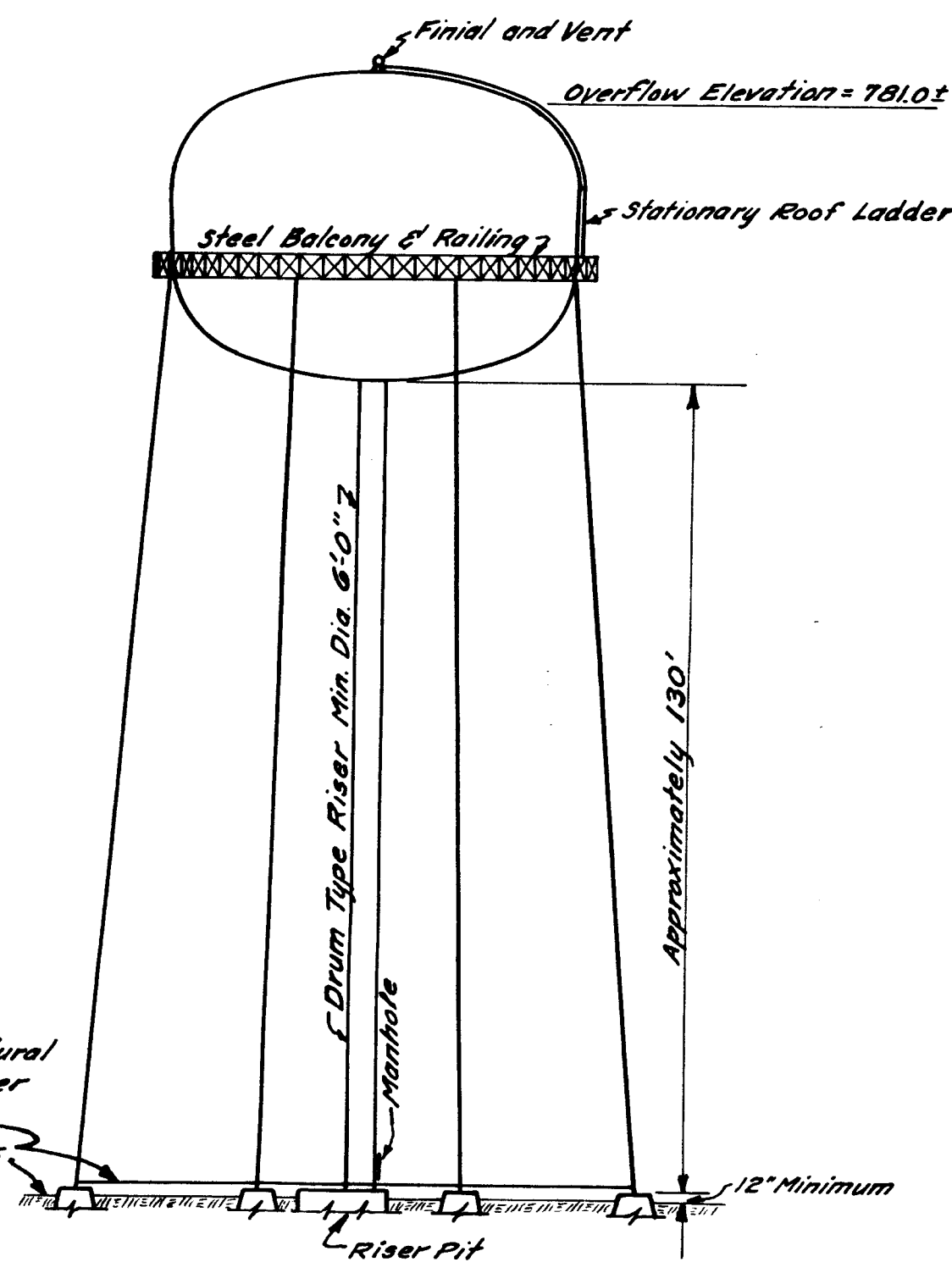
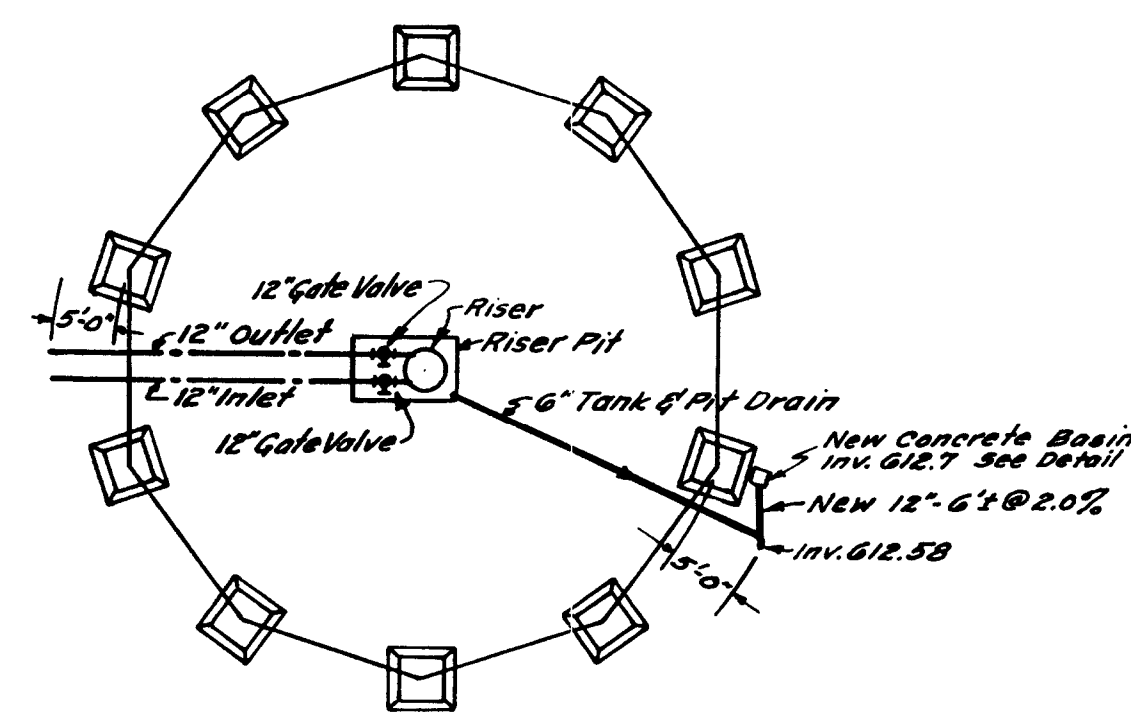
Elevations U.S.C.G.S. Datum	B-1		B-2		B-3		B-4	
	Ground Surface Elev. 618.0	12 2'-0"	Ground Surface Elev. 617.5	14 2'-0"	Ground Surface Elev. 617.7	12 2'-0"	Ground Surface Elev. 617.6	13 2'-0"
615'	Clayey Brown Loam with Some Sand & Small Gravel		Clayey Black Loam, Some Small Gravel, Trace Sand		Clayey Black Loam, Some Small Gravel, Trace Sand		Clayey Black Loam with Some Sand & Small Gravel	
610'	Very Stiff Brown Gray Silty Clay, with Some Sand & Small to Medium Gravel	25	Very Stiff Brown Gray Silty Clay, with Some Sand & Small Gravel	21	Very Stiff Brown Gray Silty Clay, with Some Sand & Small Gravel, Trace Sand	18	Very Stiff Brown Gray Silty Clay, with Some Sand & Small Gravel, Trace Sand	22
605'	Very Stiff Gray Silty Clay, with Some Sand & Small Gravel	28	See Note A	29	See Note A	23	Very Stiff Gray Silty Clay, with Some Sand & Small Gravel, Trace Sand	29
600'	Very Stiff Gray Silty Clay, with Some Sand & Small Gravel	21	Very Stiff Gray Silty Clay, with Some Sand & Small Gravel, Trace Sand	27	Very Stiff Gray Silty Clay, with Some Sand & Small Gravel, Trace Sand	24	Very Stiff Gray Silty Clay, with Some Sand & Small Gravel, Trace Sand	24
595'	Hard Gray Silty Clay, with Some Sand & Small Gravel	35	Compact, Inorganic Gray Silty Clay	18	Used 5'-0" of 2 1/2" Casing 8-4-54	23	Used 5'-0" of 2 1/2" Casing 8-4-54	29
590'	Very Hard Very Stiff Gray Silty Clay, with Some Sand & Small Gravel	100	Used 5'-0" of 2 1/2" Casing 8-4-54	18	NOTE A: Very stiff, brown and gray silty clay with seams of sand and small to medium gravel.	28	Used 5'-0" of 2 1/2" Casing 8-4-54	29

GENERAL NOTES
All Borings were bailed dry upon completion and remained dry after 24 hours.
NOTE A: Very stiff, brown and gray silty clay with seams of sand and small to medium gravel.

CLASSIFICATIONS BY VISUAL INSPECTION & LAB. ANALYSIS

BORING LOG
Vertical Scale - 1" = 4'-0"

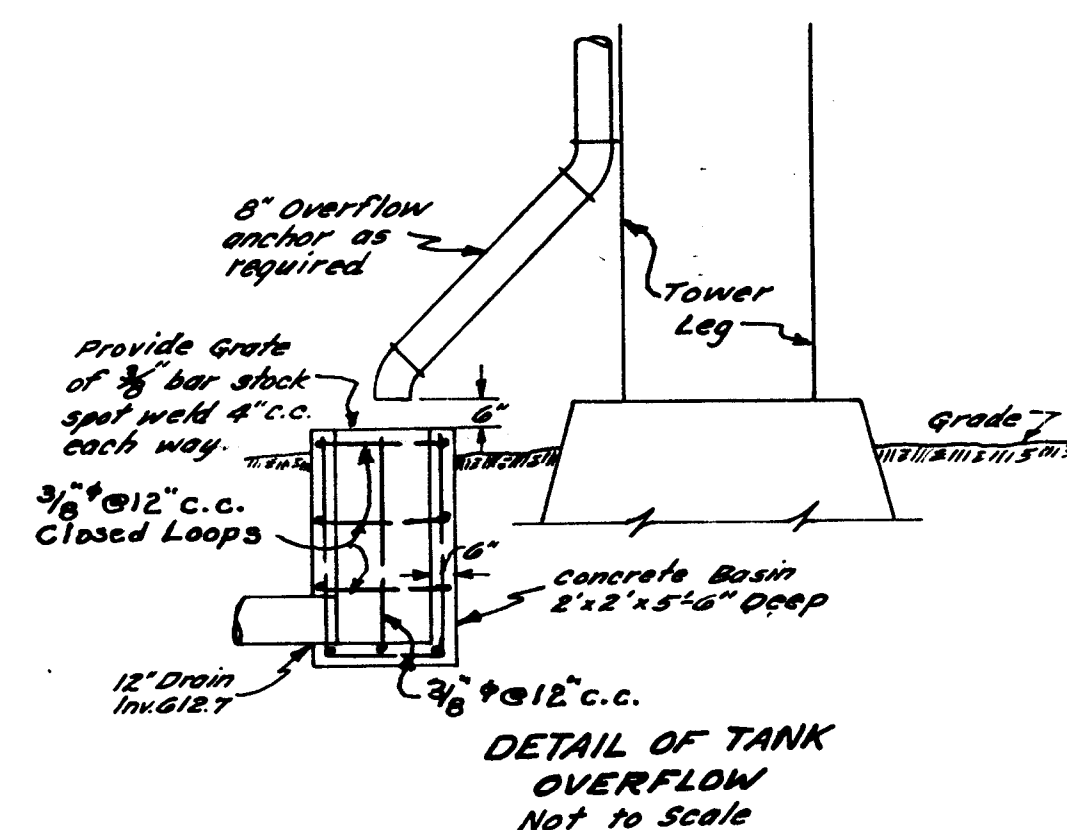
Figures in this column indicate number of blows required to drive 2" O.D. sampling pipe one foot using 140 lb. weight falling 30 inches.



1,000,000 GAL. WATER TANK & TOWER NO. 198
Not to Scale

SANITARY LOCATION PLAN
Not to Scale

- NOTES:
1. Tank contract ends 5 feet from outer bolt circle, with the exception of any area grading which may be required.
 2. Overflow level of the new tank shall be the same as that of existing tank Number 6, Elevation 781.02.
 3. Minimum cover over new water lines shall be 4'-0".
 4. The safe bearing capacity of the soil at the tank is 4000 lb. per sq. ft.



VETERANS ADMINISTRATION
WASHINGTON, D. C.

APPROVED: *[Signature]*
DIRECTOR, DESIGN SERVICE

SPECIFICATION No. 54180

SANITARY D.J.B.

SANITARY - STRUCTURAL		
PLANS AND DETAILS		
WATER TANK AND TOWER No. 198		
VETERANS ADMINISTRATION		
HINES, ILL.		
Drawn: <i>E.E.W.</i>	REVISIONS	NUMBER
Checked: <i>L.A.G.</i>		198-WI
Sect. Chf: <i>HAC</i>		SHEET 1 OF 1
Date: <i>Sept. 20, 1934</i>		
Division Chief: <i>T.C. Stephenson</i>		Proj. No. 12-5250

RETURN TRACINGS TO PLAN FILES

FILE FOLDER NO. 40