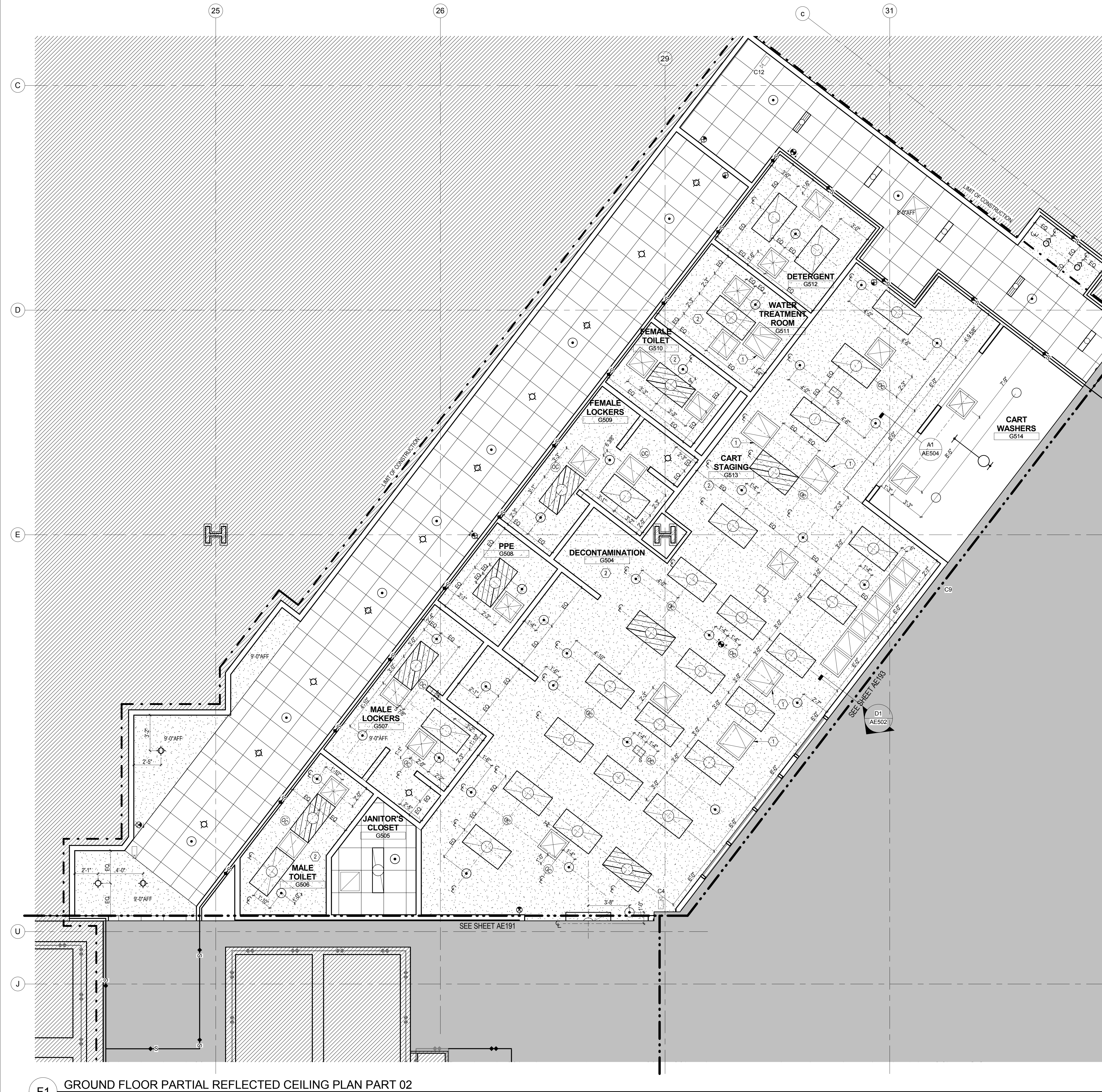


one eighth inch = one foot
one quarter inch = one foot
three eighths inch = one foot
one half inch = one foot
three quarters inch = one foot
one inch = one foot
one and one half inches = one foot
two inches = one foot
three inches = one foot



F1 GROUND FLOOR PARTIAL REFLECTED CEILING PLAN PART 02

REFLECTED CEILING PLAN LEGEND

- 2' x 4' LIGHT FIXTURE
- 2' x 4' LIGHT FIXTURE (EMERGENCY)
- 2' x 2' LIGHT FIXTURE
- 2' x 2' LIGHT FIXTURE (EMERGENCY)
- 4' SUSPENDED LIGHT FIXTURE
- 4' SUSPENDED LIGHT FIXTURE (EMERGENCY)
- RECESSED DOWN LIGHT
- 24" x 24" RETURN GRILLE
- 24" x 24" SUPPLY DIFFUSER
- SECURITY CAMERA
- OCCUPANCY SENSOR
- SPEAKER
- UPRIGHT SPRINKLER
- SEMI-RECESSED PENDANT SPRINKLER
- EXIT SIGN 1 WAY
- EXIT SIGN 2 WAY
- EXIT SIGN DOUBLE FACE
- EXIT SIGN SINGLE FACE LEFT
- EXIT SIGN SINGLE FACE RIGHT
- EXIT SIGN SINGLE FACE
- CEILING JUNCTION BOX

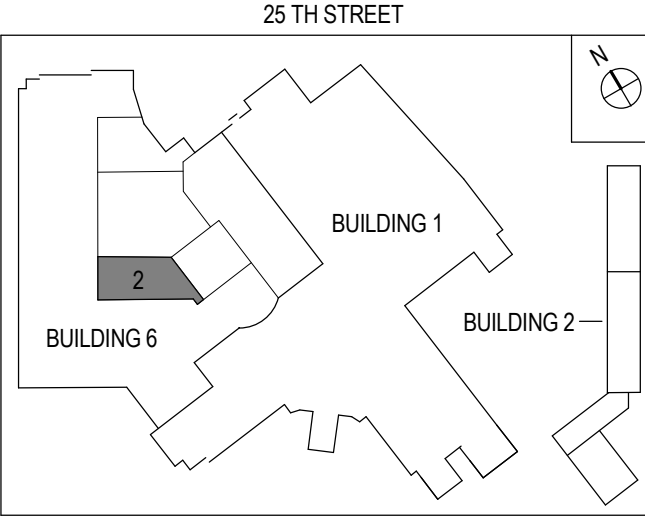
LEGEND

- NOT IN CONTRACT
- SEE ADJACENT VIEW
- CONTRACT LIMIT LINE
- MATCH LINE
- EXISTING WALL
- NEW CONSTRUCTION

CEILING TYPE LEGEND

- ACOUSTICAL CEILING TILE (2'x2')
- GYPSUM BOARD

KEY PLAN:



GENERAL NOTES:

- CEILING HEIGHT IS TO BE MEASURED FROM AN ASSUMED BENCHMARK OF 0.0' (ABOVE FINISHED FLOOR).
- ALL RECESSED CIRCULAR LIGHTS, EXIT SIGNS, DIFFUSERS, GRILLES, AND SPRINKLER HEADS ARE TO BE CENTERED ON ACOUSTICAL CEILING TILES UNLESS OTHERWISE NOTED.
- SEE "EL" DRAWING SERIES FOR LIGHTING FIXTURE TAGS AND TYPES.
- THIS DRAWING IS TO BE READ IN CONJUNCTION WITH MEP DRAWINGS FOR CEILING COMPONENTS, SWITCH LOCATIONS AND SPECIFICATIONS. REFER TO ELECTRICAL DRAWINGS FOR LIGHTING FIXTURE SCHEDULE. REFER TO MECHANICAL DRAWINGS FOR DIFFUSER AND GRILLE SCHEDULE.
- ALL CEILINGS TO BE 8'-0" A.F.F., UNLESS OTHERWISE NOTED.
- REMOVE EXISTING BLACK IRON. PROVIDE NEW BLACK IRON FOR CEILINGS UNLESS OTHERWISE NOTED.

KEYNOTES:

- 30"x30" ACCESS PANEL
- PROVIDE WATER RESISTANT GYPSUM BOARD CEILING.

FULLY SPRINKLERED

1	ADDENDUM 1	02/13/2015
NO	ISSUE FOR CONSTRUCTION	07/25/2014
NO	REVISIONS	DATE

CONSULTANTS:

WARNING: This warning is required to be included on this document under New York State Education Law, Article 145, Section 7209, Sub-Paragraph 2. It is a violation of the aforementioned law for any person, unless acting under the direction of a licensed professional engineer or land surveyor, to alter any portion of the design set forth on this document. If any item of the design set forth in this document is altered, the altering engineer or land surveyor shall affix to the item his/her seal and the notation "altered by" followed by her/his signature and the date of such alteration and a specific description of the alteration.

ARCHITECT/ENGINEERS:

HDR
Henningson, Durham & Richardson, Architecture and Engineering, P.C.
500 Seventh Ave, 11th Floor, New York, NY 10018 . 212-904-1212

Drawing Title
GROUND FLOOR PARTIAL REFLECTED CEILING PLAN PART 02

Approved: Project Director

Project Title
**VA NY HARBOR HEALTHCARE SYSTEM
MANHATTAN CAMPUS GROUND FLOOR PHASE 1B
STERILE PROCESSING SUITE**

Location
423 E 23RD STREET, NEW YORK, NY 10010

Date	Checked	Drawn
02/18/2014	BC	PT

Project Number
219359
Building Number
6
Drawing Number
AE192

Office of
Construction
and Facilities
Management

VA U.S. Department
of Veterans Affairs