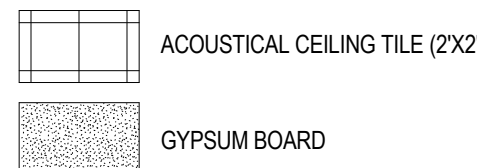
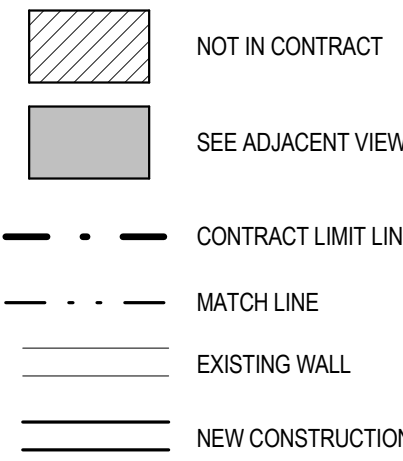


CEILING TYPE LEGEND



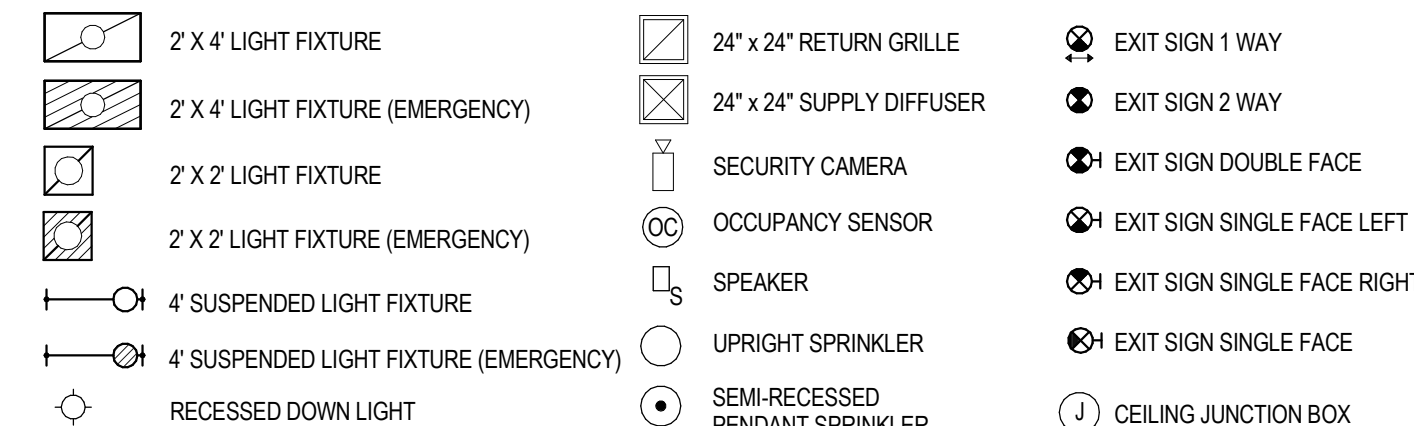
LEGEND



GENERAL NOTES:

1. CEILING HEIGHT IS TO BE MEASURED FROM AN ASSUMED BENCHMARK OF 0'-0" (ABOVE FINISHED FLOOR).
2. ALL RECESSED CIRCULAR LIGHTS, EXIT SIGNS, DIFFUSERS, GRILLES, AND SPRINKLER HEADS ARE TO BE CENTERED ON ACOUSTICAL CEILING TILES UNLESS OTHERWISE NOTED.
3. SEE "EL" DRAWING SERIES FOR LIGHTING FIXTURE TAGS AND TYPES.
4. THIS DRAWING IS TO BE READ IN CONJUNCTION WITH MEP DRAWINGS FOR CEILING COMPONENTS, SWITCH LOCATIONS AND SPECIFICATIONS. REFER TO ELECTRICAL DRAWINGS FOR LIGHTING FIXTURE SCHEDULE. REFER TO MECHANICAL DRAWINGS FOR DIFFUSER AND GRILLE SCHEDULE.
5. ALL CEILINGS TO BE 8'-0" A.F.F., UNLESS OTHERWISE NOTED.
6. REMOVE EXISTING BLACK IRON. PROVIDE NEW BLACK IRON FOR CEILINGS UNLESS OTHERWISE NOTED.

REFLECTED CEILING PLAN LEGEND

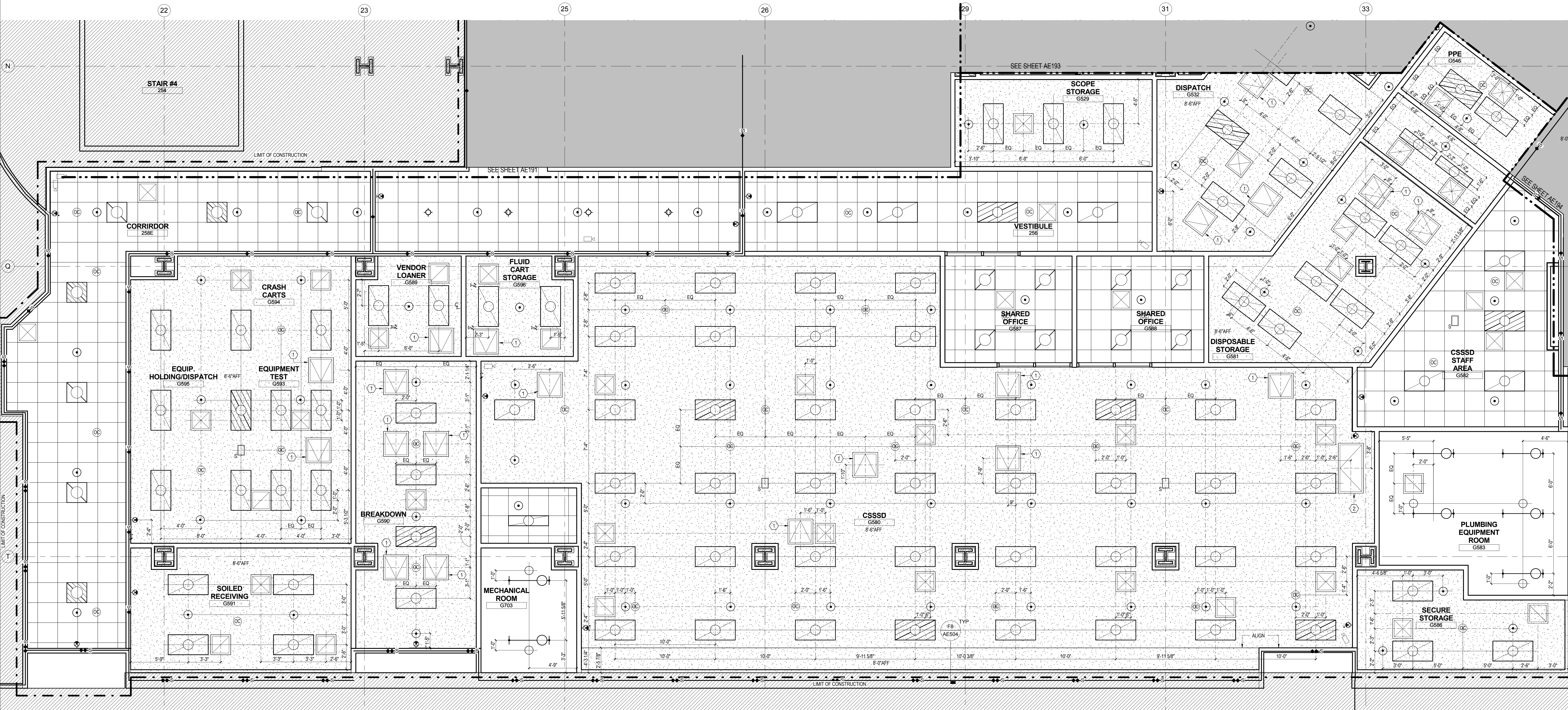
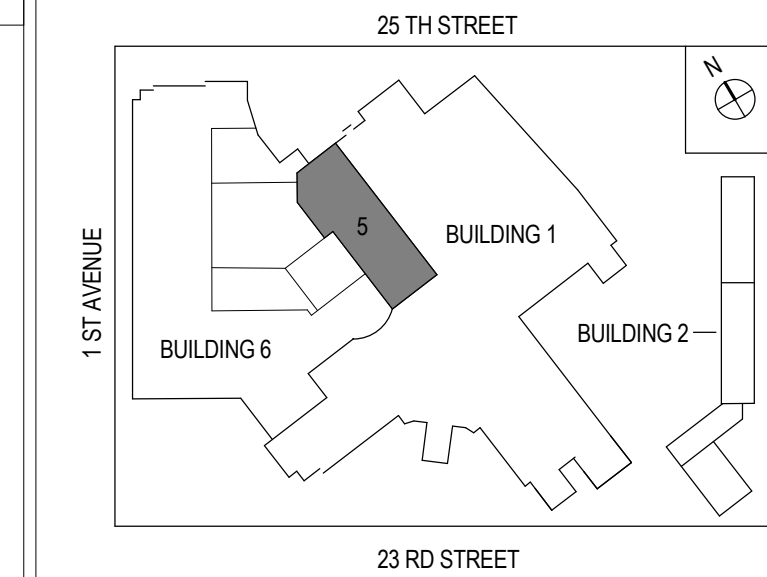


- 1 30"x30" ACCESS PANEL
- 2 60"x30" ACCESS PANEL

KEYNOTES:

- 1 30"x30" ACCESS PANEL
- 2 60"x30" ACCESS PANEL

KEY PLAN:



F1 GROUND FLOOR PARTIAL REFLECTED CEILING PLAN PART 05

CONSULTANTS:

WARNING: This warning is required to be included on this document under New York State Education Law, Article 145, Section 7209, Sub-Paragraph 2. It is a violation of the aforementioned law for any person, unless acting under the direction of a licensed professional engineer or land surveyor, to alter any portion of the design set forth on this document. If any item of the design set forth in this document is altered, the altering engineer or land surveyor shall affix to the item his/her seal and the notation "altered by" followed by his/her signature and the date of such alteration and a specific description of the alteration.

ARCHITECT/ENGINEERS:



Henningson, Durham & Richardson, Architecture and Engineering, P.C.
500 Seventh Ave, 11th Floor, New York, NY 10018 212-904-1212

Drawing Title

GROUND FLOOR PARTIAL REFLECTED
CEILING PLAN PART 05

Approved: Project Director

Project Title

VA NY HARBOR HEALTHCARE SYSTEM
MANHATTAN CAMPUS GROUND FLOOR PHASE 1B
STERILE PROCESSING SUITE

Location
423 E 23RD STREET, NEW YORK, NY 10010

Date

02/18/2014

Checked

BC

Drawn

PT

Project Number

219359

Building Number

6

Drawing Number

AE195

FULLY SPRINKLERED

Office of
Construction
and Facilities
Management



U.S. Department
of Veterans Affairs